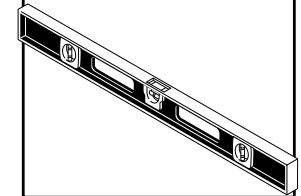
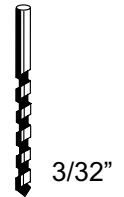
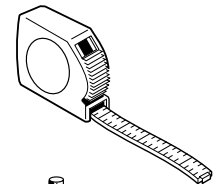
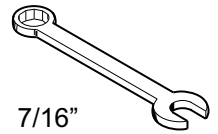
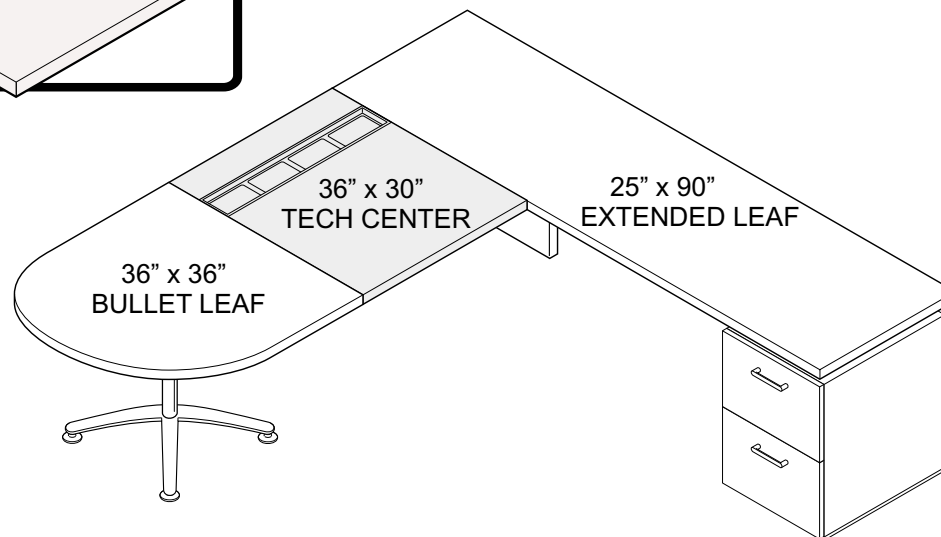
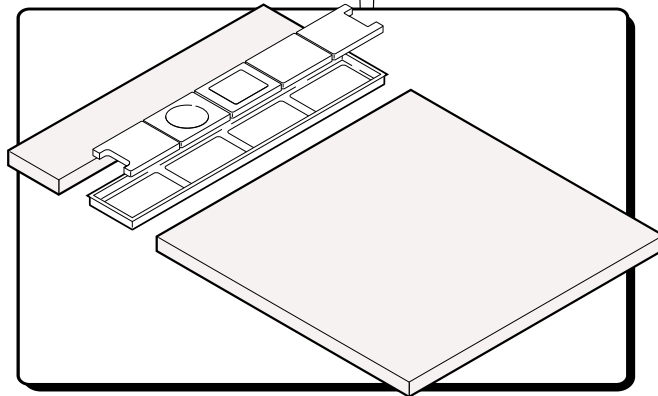


This configuration is shown in this direction.



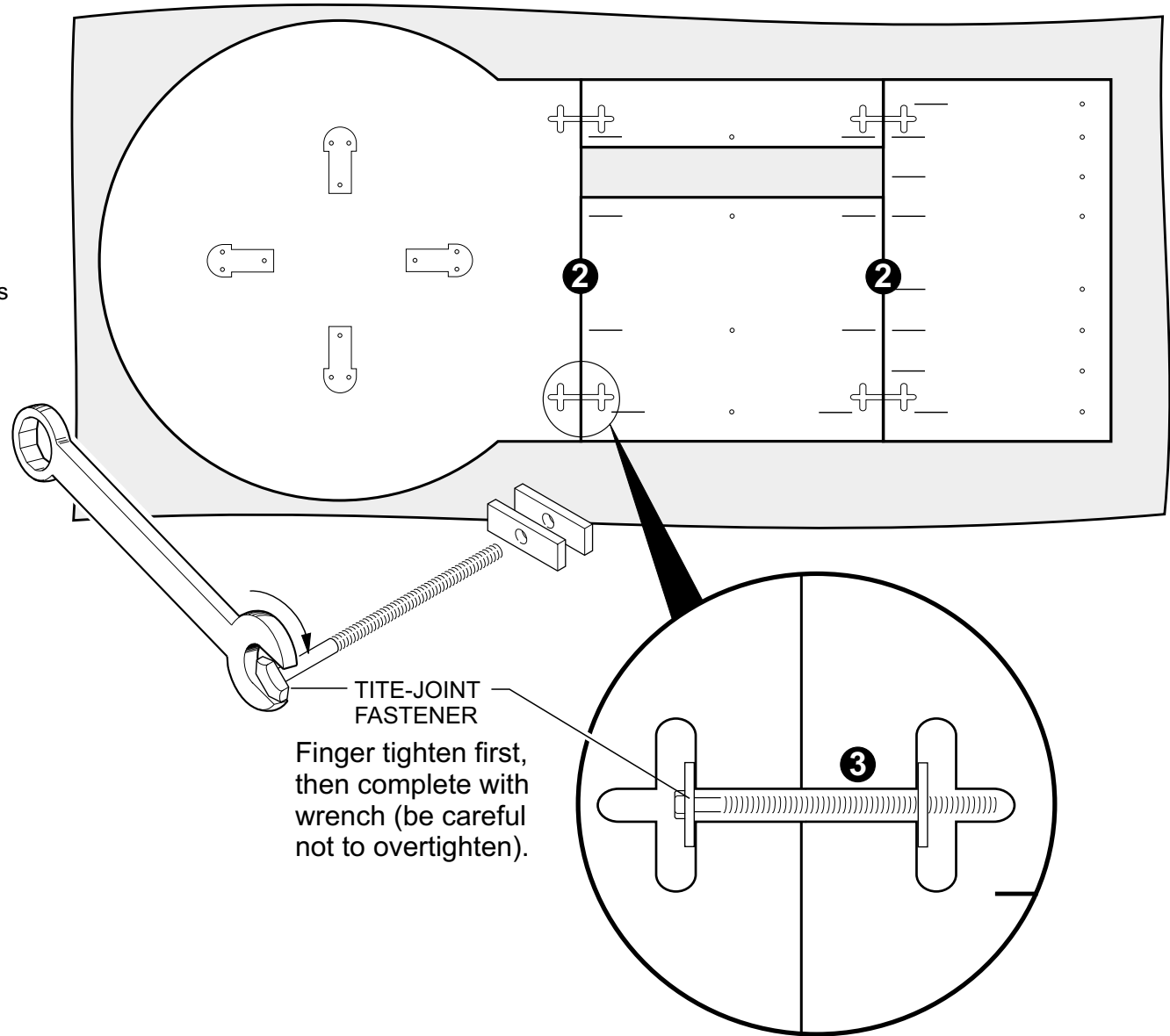
If you have a problem, question, or request, call your local dealer, or Steelcase Line 1 at **888.STEELCASE** (888.783.3522) for immediate action by people who want to help you.

(Outside the U.S.A. Canada, Mexico, Puerto Rico, and the U.S. Virgin Islands, call: 1.616.247.2500) Or visit our website: www.steelcase.com

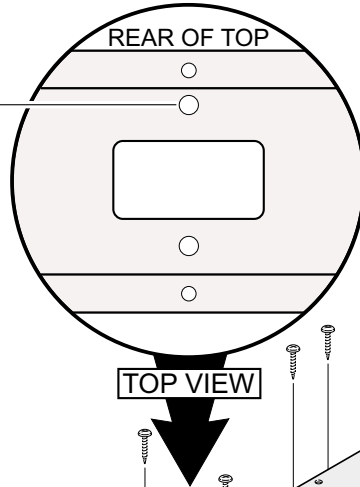
© 2002 Steelcase Inc.
Grand Rapids, MI 49501
U.S.A.

Printed in the U.S.A.

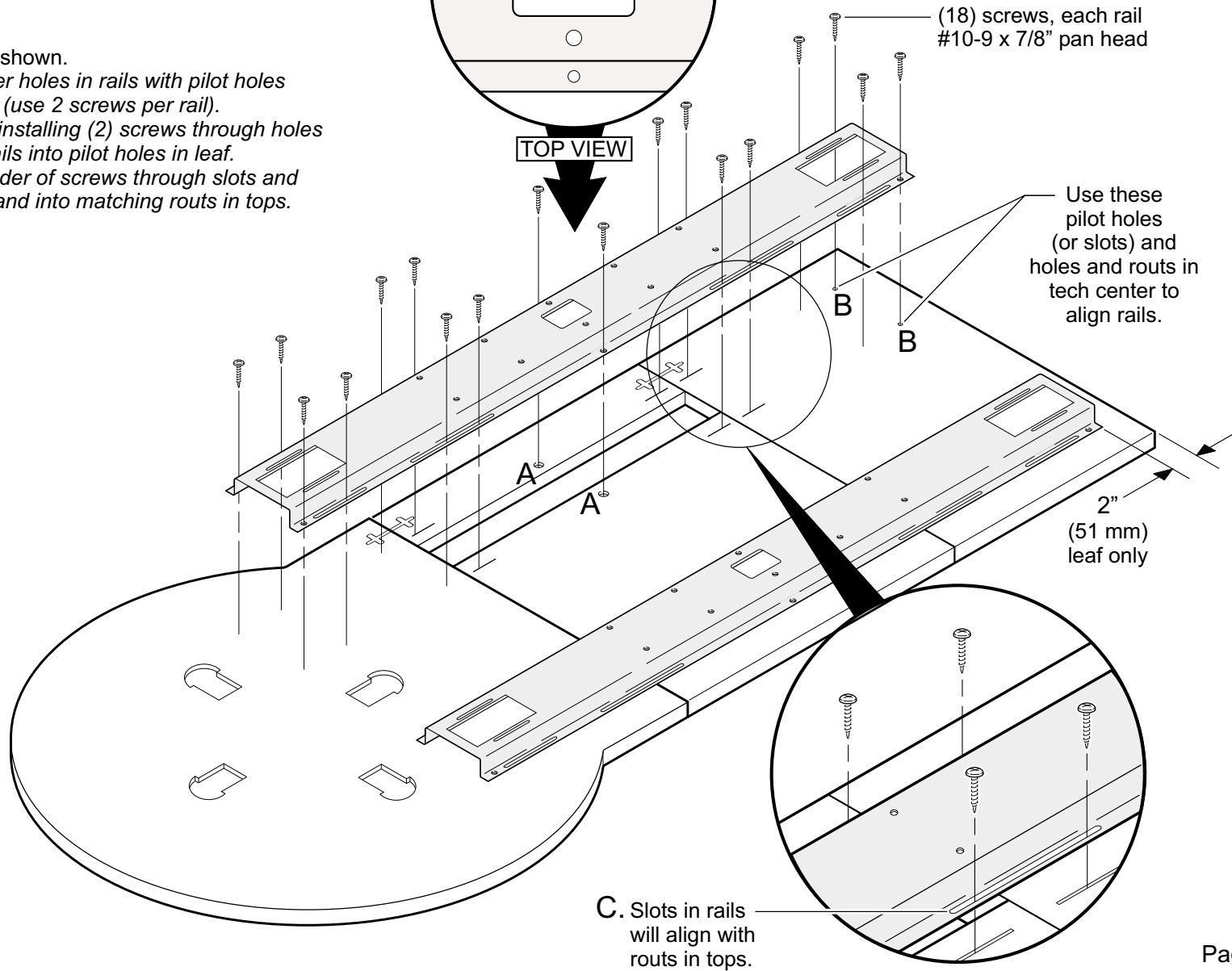
1. Carefully position worksurfaces top down on carpet.
2. Make certain tops are in alignment and fit tightly together.
3. Insert tite-joint fasteners as shown and tighten each until all worksurfaces are flush.



Rail must be in this orientation (side with holes nearest the edge toward the rear of top).



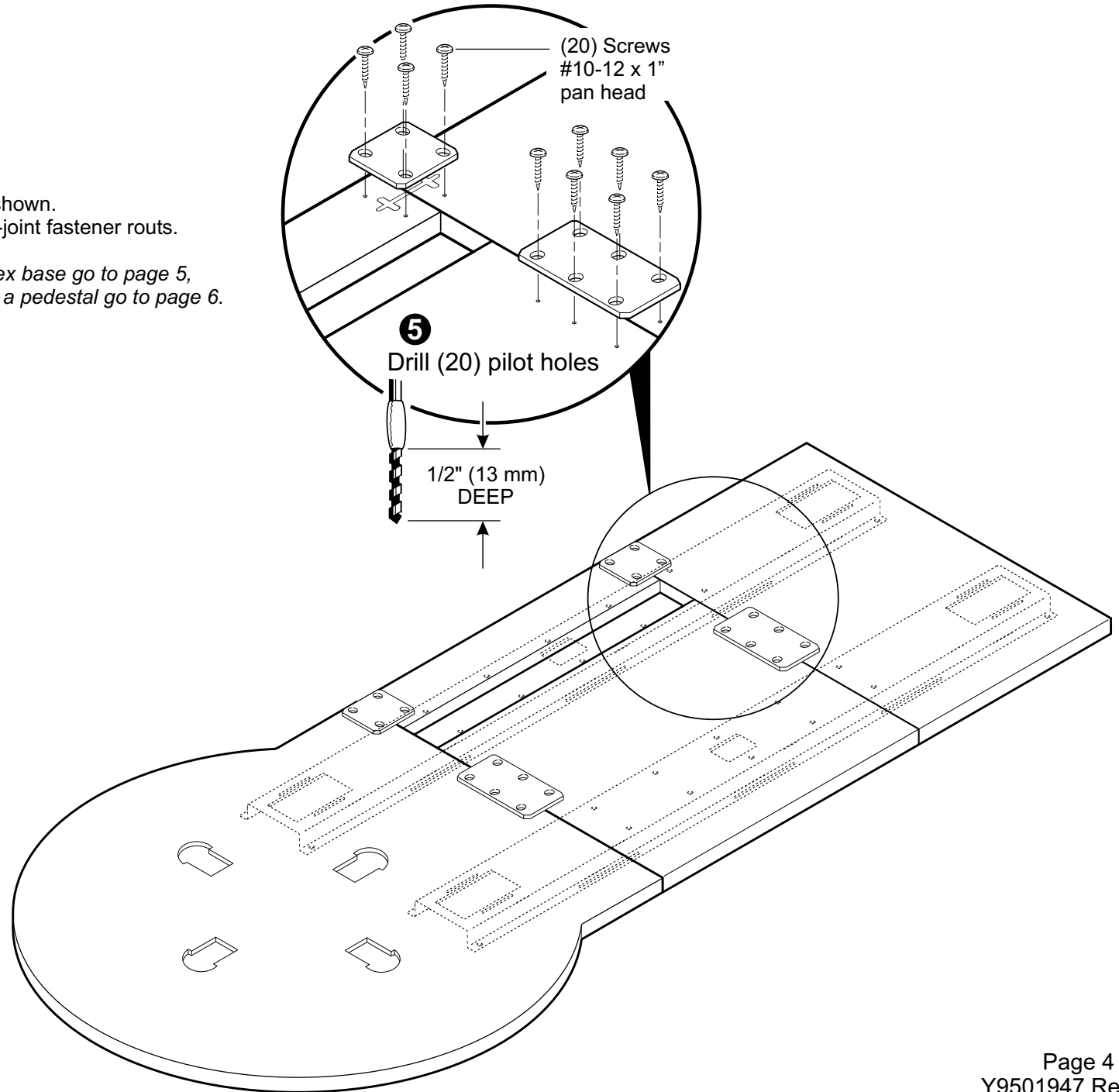
- 4. Install (2) rails as shown.
 - A. Position center holes in rails with pilot holes in tech center (use 2 screws per rail).
 - B. Align rails by installing (2) screws through holes near end of rails into pilot holes in leaf.
 - C. Install remainder of screws through slots and holes in rails and into matching routs in tops.



C. Slots in rails will align with routs in tops.

- 5.** Attach (4) support plates as shown.
The rear plates will cover tite-joint fastener routs.

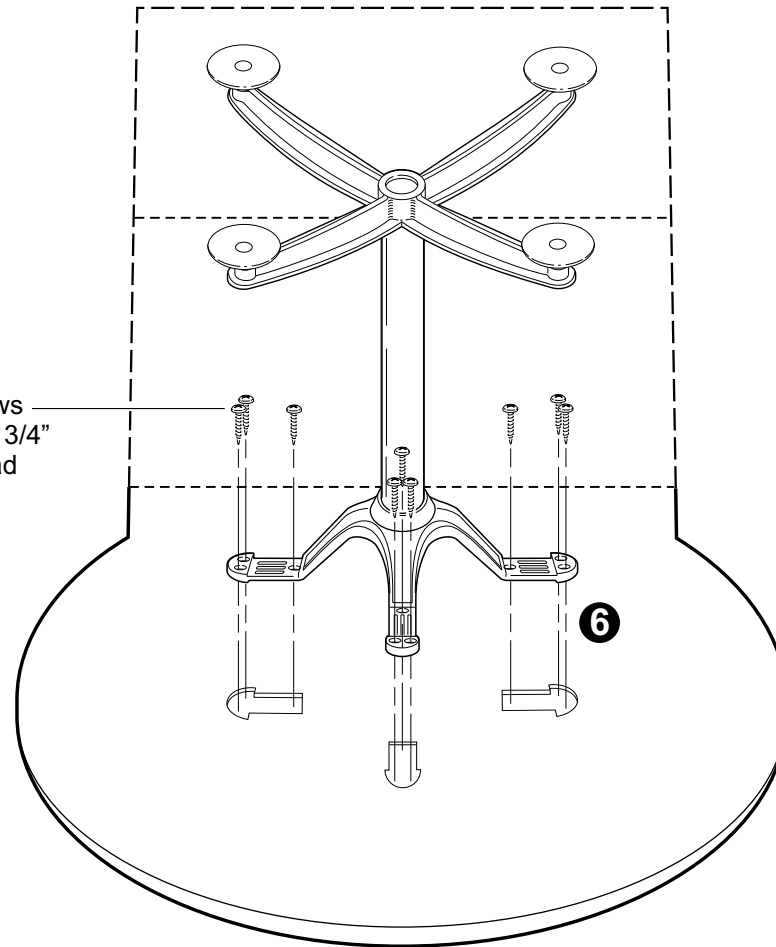
*NOTE: if assembly uses a flex base go to page 5,
if assembly is supported with a pedestal go to page 6.*



IF ASSEMBLY IS SUPPORTED WITH A FLEX BASE

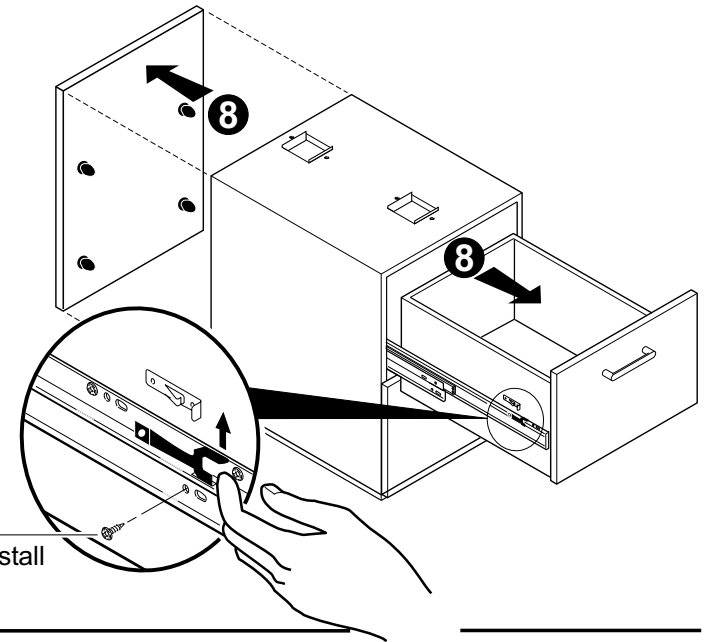
6. Install flex base (if any) into the routs with the screws provided.
7. If your assembly has a modesty panel, install hang brackets with cable (refer to assembly direction Y9501948) before proceeding to next step.

(12) screws
#10-9 x 1 3/4"
truss head



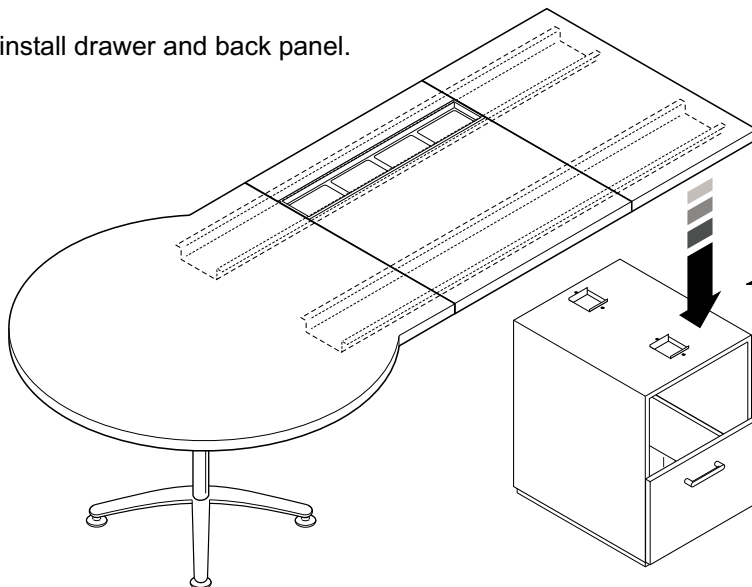
IF ASSEMBLY IS SUPPORTED WITH A PEDESTAL

8. Remove back panel and top drawer for access to pedestal interior.
9. Put pedestal approximately in final location.

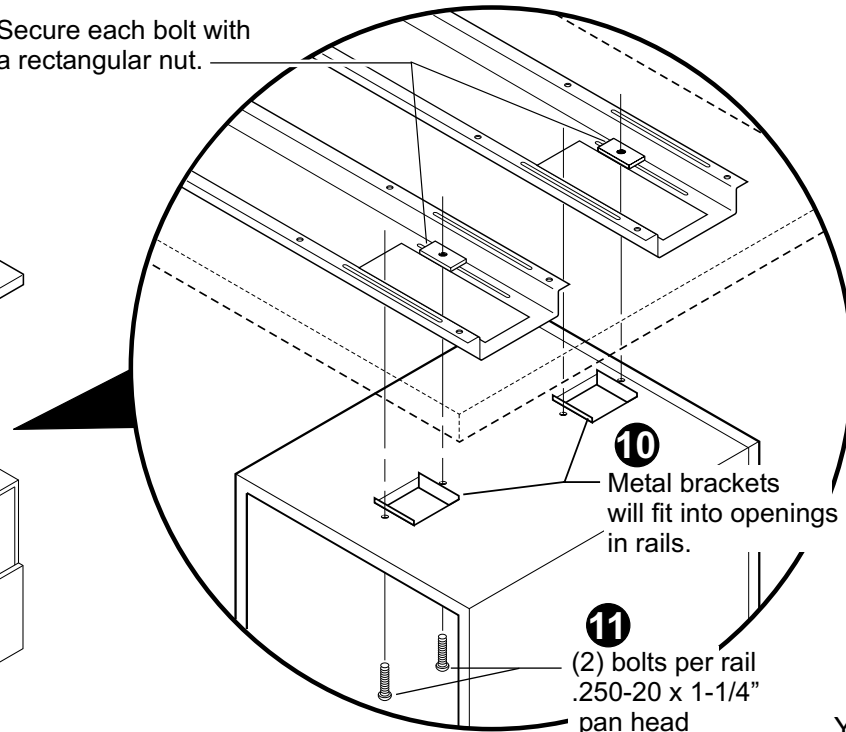


You may need to remove (1) screw per side to remove drawer, then reinstall when assembly is completed.

10. Carefully lower assembly onto pedestal, engaging protruding brackets through openings in rails.
11. Secure pedestal to worksurface as shown.
12. Reinstall drawer and back panel.



Secure each bolt with a rectangular nut.



10 Metal brackets will fit into openings in rails.

11 (2) bolts per rail
.250-20 x 1-1/4"
pan head

13. Place grommet in opening in tech center.
14. Secure grommet to rail from underneath with (10) shoulder bolts as shown.
15. Route cords as needed, then put (5) technology covers into place as desired.

