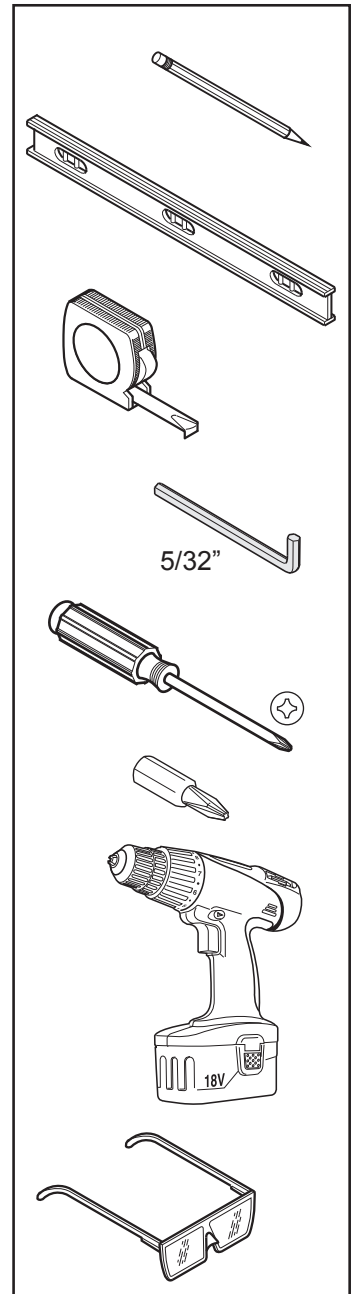
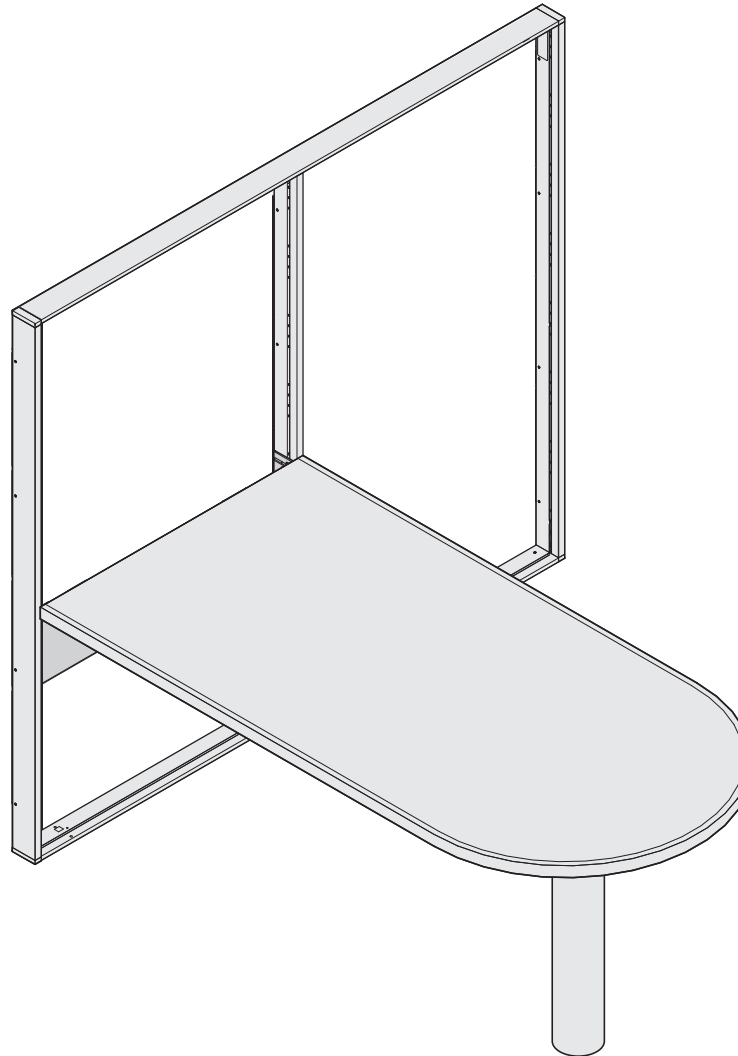


Worksurface Attachment Skin



If you have a problem, question, or request, call your local dealer, or Steelcase Line 1 at 888.STEELCASE (888.783.3522) for immediate action by people who want to help you. (Outside the U.S.A., Canada, Mexico, Puerto Rico, and the U.S. Virgin Islands, call: 1.616.247.2500) Or visit our website: www.steelcase.com
© 2004 Steelcase Inc.
Grand Rapids, MI 49501
U.S.A.
Printed in U.S.A.

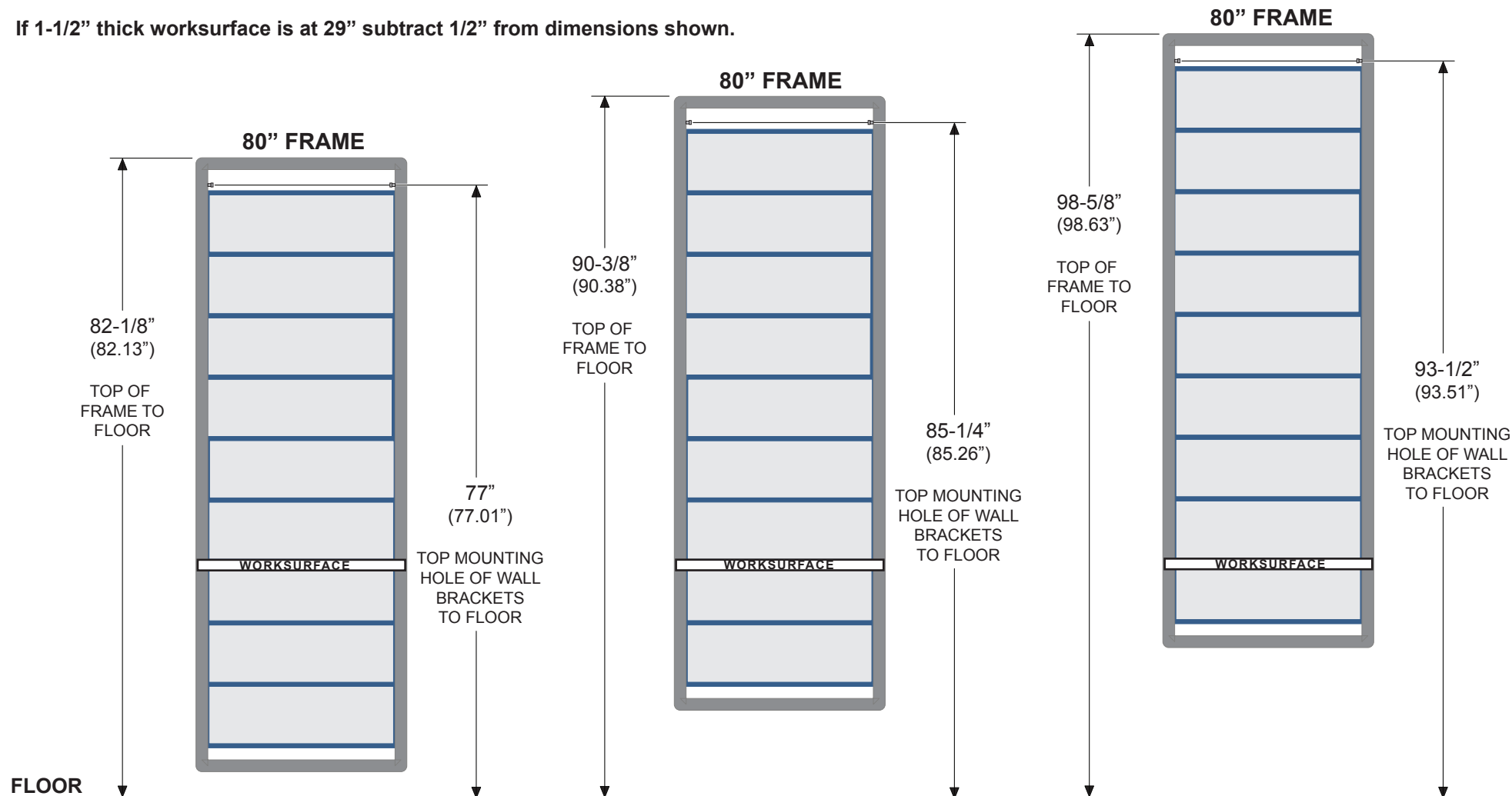
Use pages 2 through 5 to help locate your FlexFrame frame assembly onto your existing building wall.

NOTE: If worksurface is at 29-1/2" use the dimensions shown.

If 1-1/4" thick worksurface is at 28-1/2" subtract 3/4" from dimensions shown.

If 1-1/2" thick worksurface is at 29" subtract 1/2" from dimensions shown.

WORKSURFACE - Worksurface Location

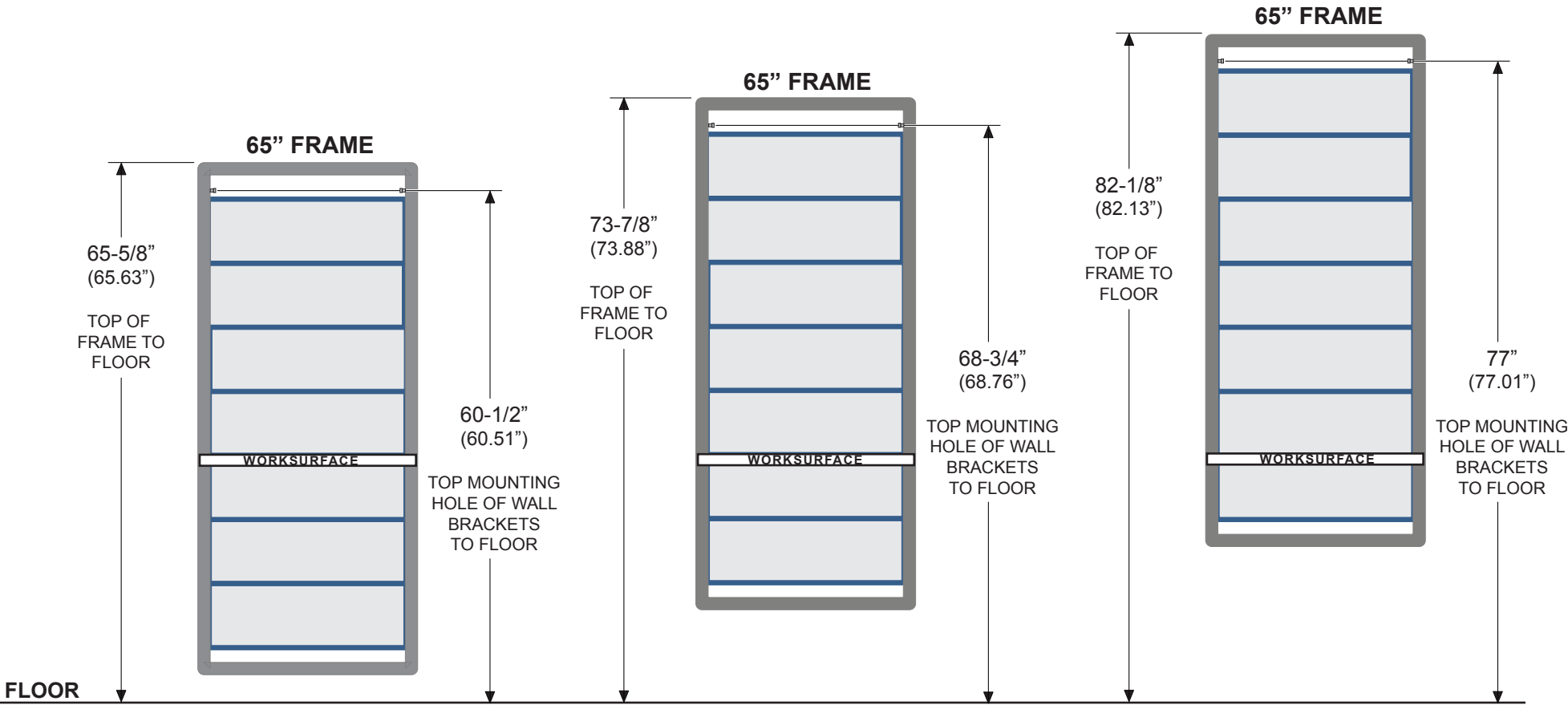


NOTE: If worksurface is at 29-1/2" use the dimensions shown.

If 1-1/4" thick worksurface is at 28-1/2" subtract 3/4" from dimensions shown.

If 1-1/2" thick worksurface is at 29" subtract 1/2" from dimensions shown.

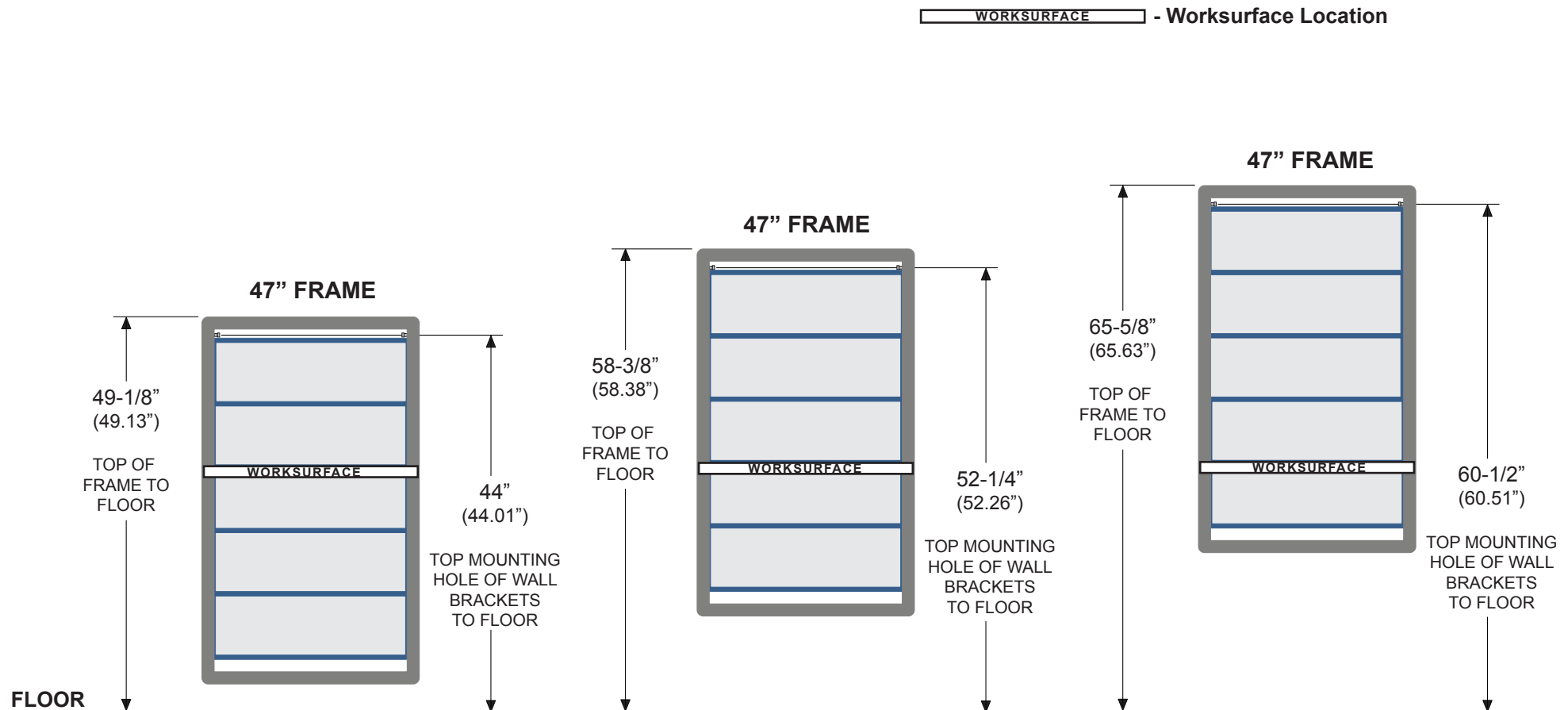
WORKSURFACE - Worksurface Location



NOTE: If worksurface is at 29-1/2" use the dimensions shown.

If 1-1/4" thick worksurface is at 28-1/2" subtract 3/4" from dimensions shown.

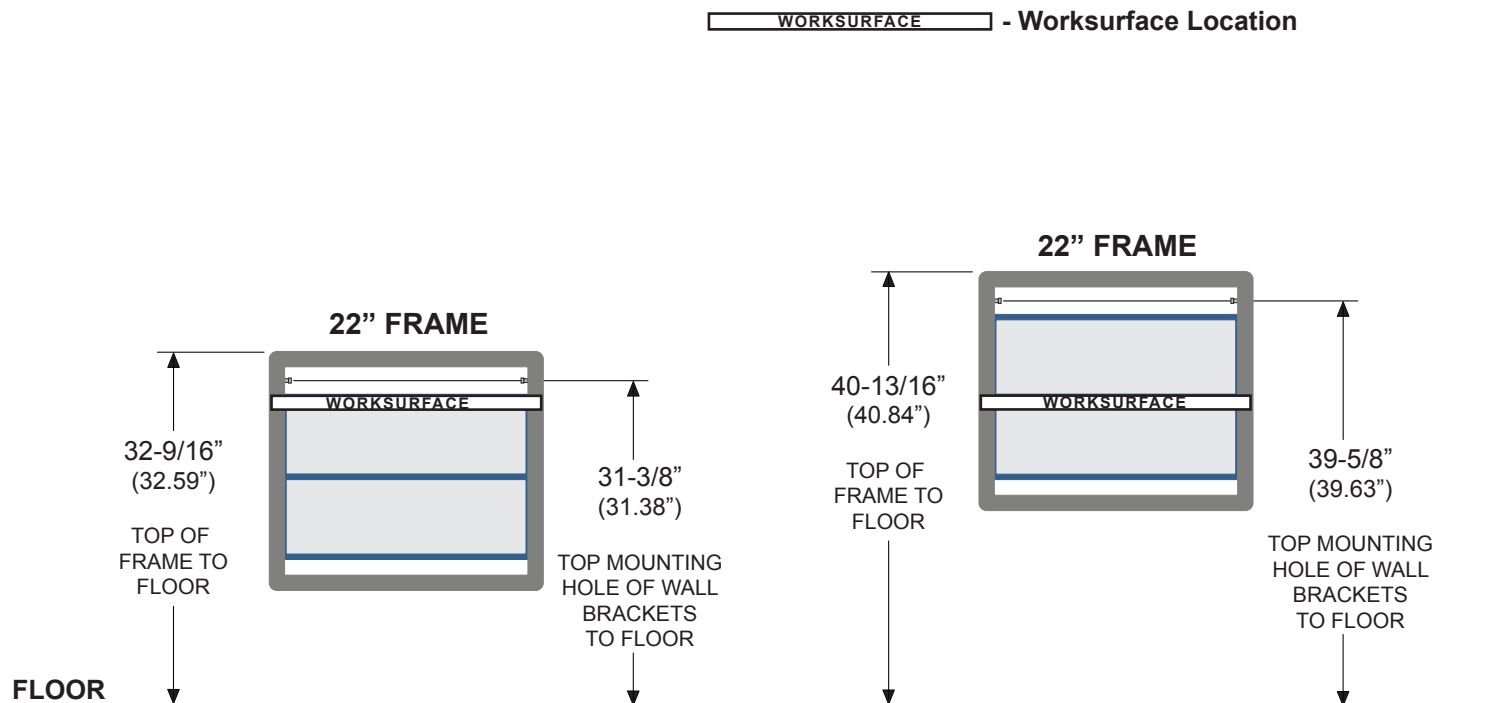
If 1-1/2" thick worksurface is at 29" subtract 1/2" from dimensions shown.



NOTE: If worksurface is at 29-1/2" use the dimensions shown.

If 1-1/4" thick worksurface is at 28-1/2" subtract 3/4" from dimensions shown.

If 1-1/2" thick worksurface is at 29" subtract 1/2" from dimensions shown.

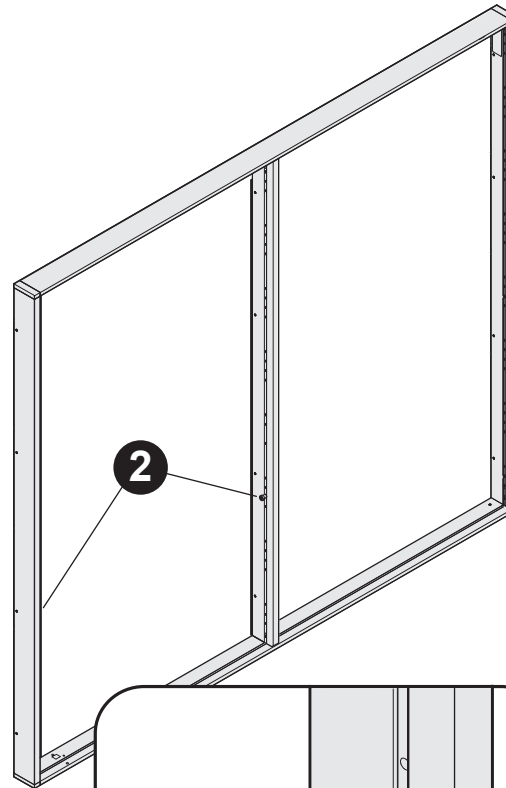
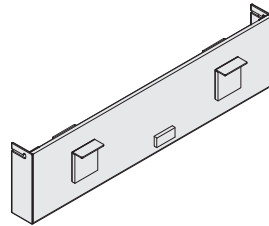


INSTALL SKIN

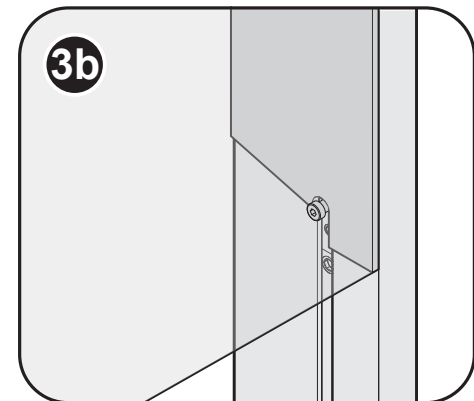
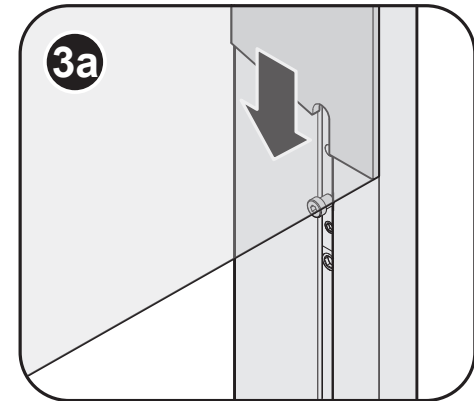
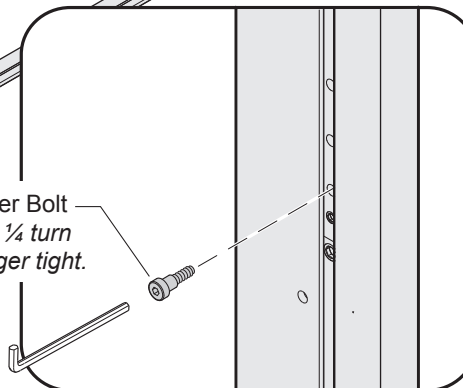
1. Refer to FlexFrame Workwall assembly direction # 939502107 for information if needed.

2. Install a shoulder bolt from skin kit into each side of frame.

3. Place bottom of skin onto shoulder bolts as shown.



Shoulder Bolt
Tighten $\frac{1}{4}$ turn
past finger tight.



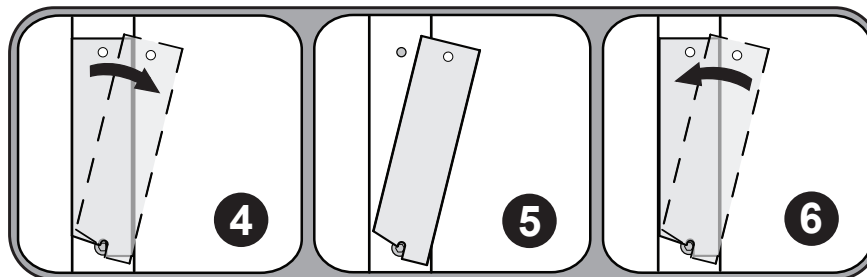
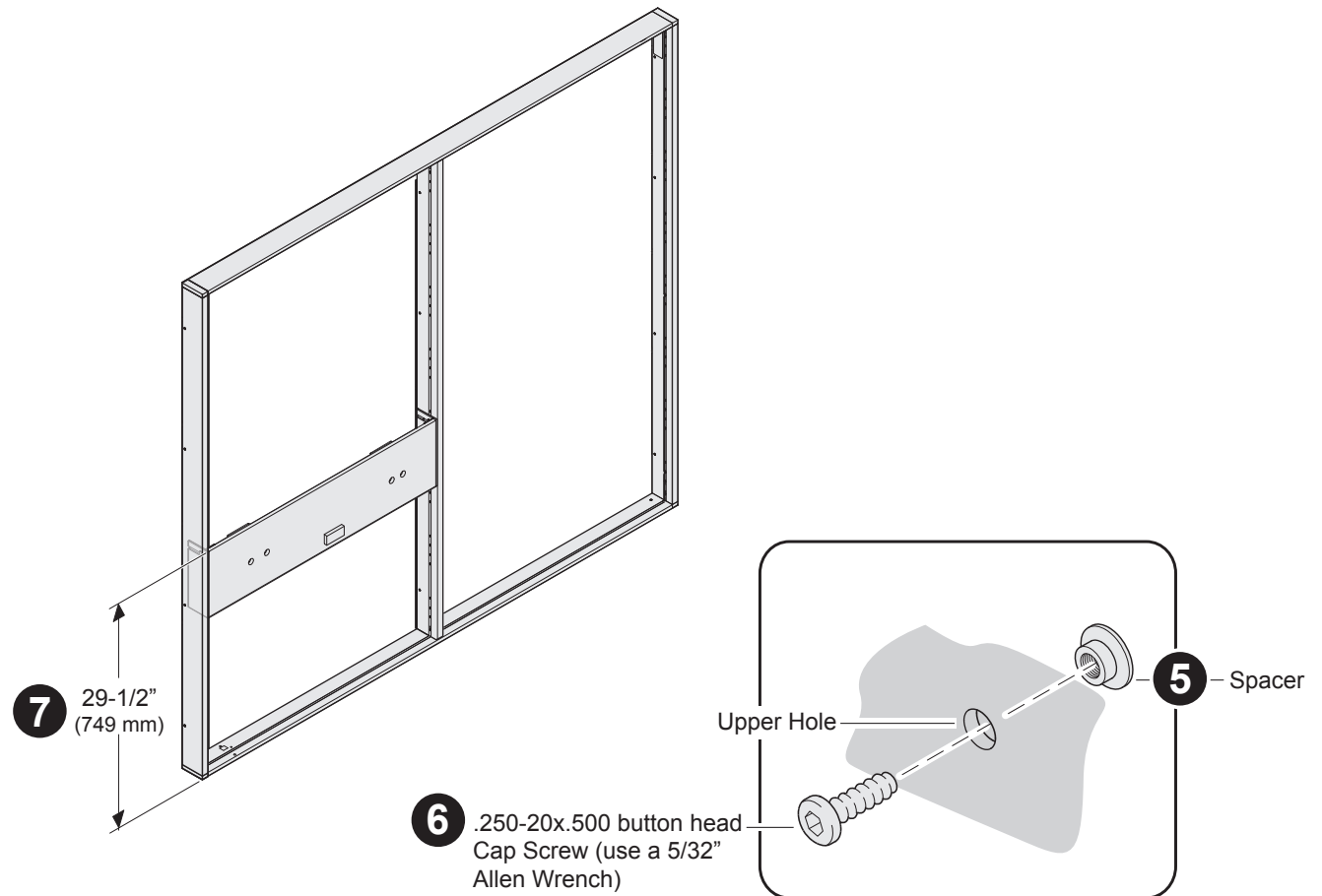
4. Tip the skin out from the frame.

5. Install spacers from skin kit into holes on each side of skin kit.

6. Tip the skin back into place and secure with cap screw into threaded strip.

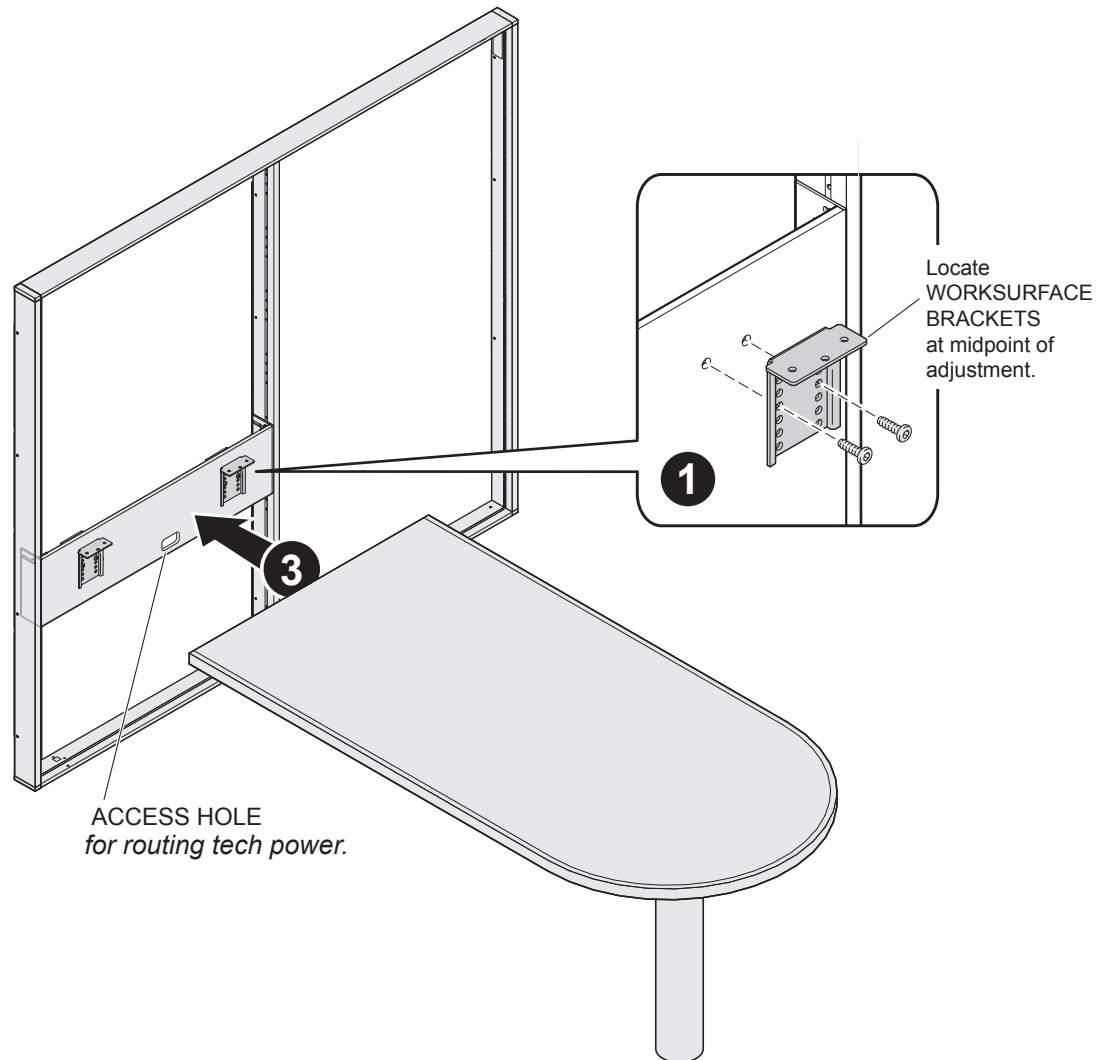
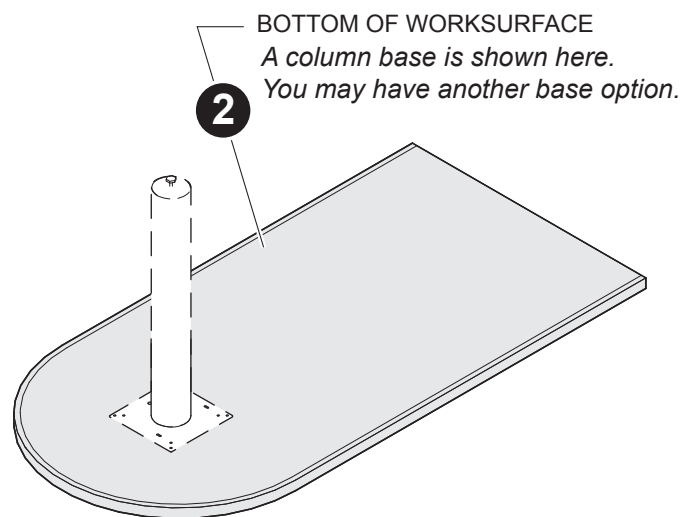
7. Measure from the high point of the floor where the desk support will set and adjust the top of the skin to the dimension shown.

If Adjustments need to be made, the skin can be moved by loosening the set screws in the threaded strip. There is 3/8" adjustment up, and a 1" adjustment down.



ATTACH WORKSURFACE

- 1.** Attach (2) worksurface brackets to skin with screws provided in kit.
Locate bracket to the mid point of the adjustment.
- 2.** Install leg or base support on the bottom side of worksurface.
- 3.** Move the worksurface into position so that it rests on the brackets.



4. Secure worksurface to brackets.

5. a) Slide decorative cover over worksurface supports, making sure that set screws are on the inside of units. b) Tighten set screws with a 1/16" hex drive.

