

NOTE: THE QUALIFIED ELECTRICIAN CAN CUT THE HARNESS TO LENGTH (WIRE END), MAKING SURE THE UL LABEL IS INSTALLED ON HARNESS.

If you have a problem, question, or request, call your local dealer, or Steelcase Line 1 at **888.STEELCASE** (888.783.3522) for immediate action by people who want to help you.

(Outside the U.S.A., Canada, Mexico, Puerto Rico, and the U.S. Virgin Islands, call: 1.616.247.2500)
Or visit our website: www.steelcase.com

© 2014 Steelcase Inc.
Grand Rapids, MI 49501
U.S.A.

Printed in U.S.A.

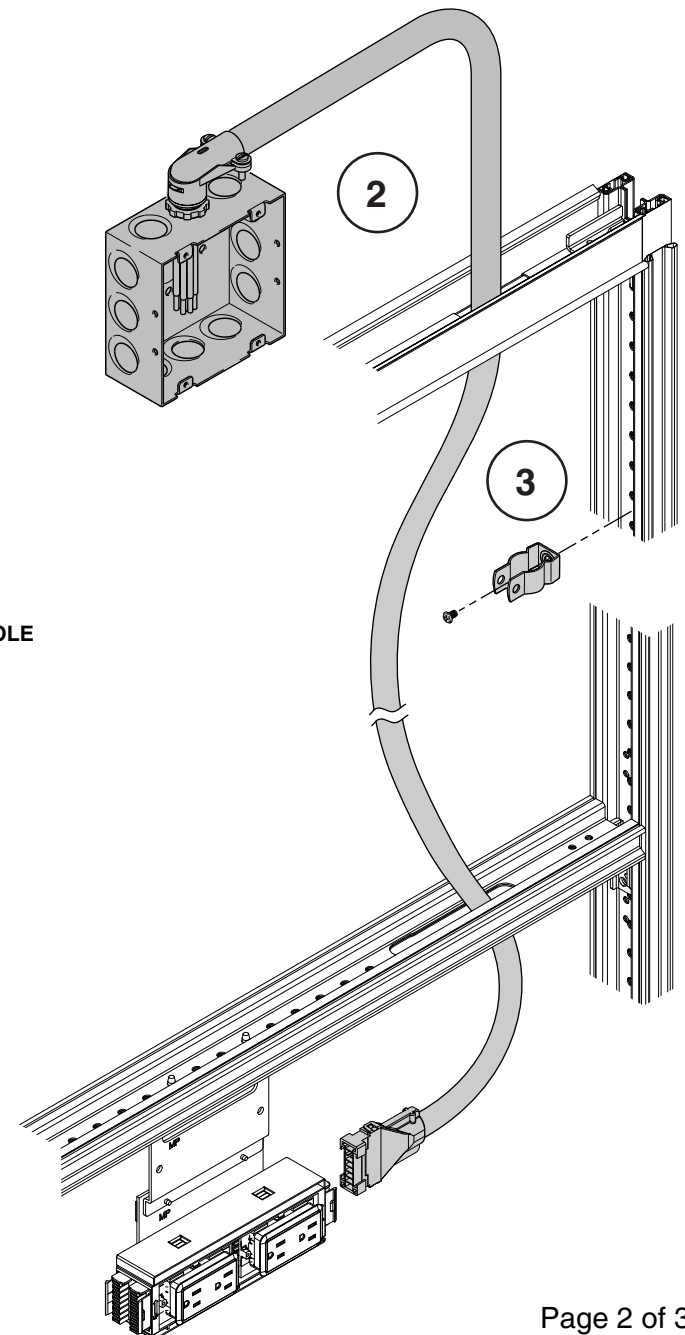
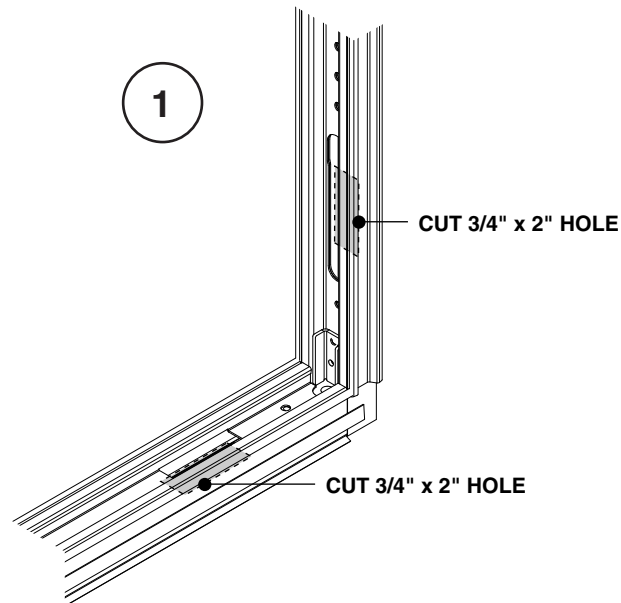
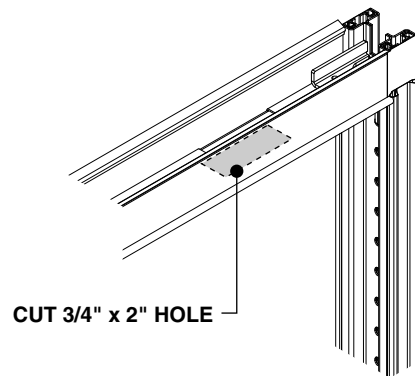
NOTE: Power In harnesses can enter from the ceiling (down), a raised floor (up) or from the wall in through a vertical rail (side). Consideration to where power enters the V.I.A. product prior to assembly can reduce install time: Ceiling track, floor track & building may require cutting prior to assembling V.I.A. understructure.

1. Cut through the hole that is already in the horizontal or vertical where the harness is to enter the frame. Deburr the hole with a file so you will not damage the data cables passing through (can use caterpillar grommet).

2. Feed the modular or hardwire harness through the hole and pull as much access as you can so you can reach the strain relief bracket and attach to the first connection.

3. Attach the strain relief bracket to the frame with screws provided.

NOTE: Pre-drilling a pilot hole is recommended.



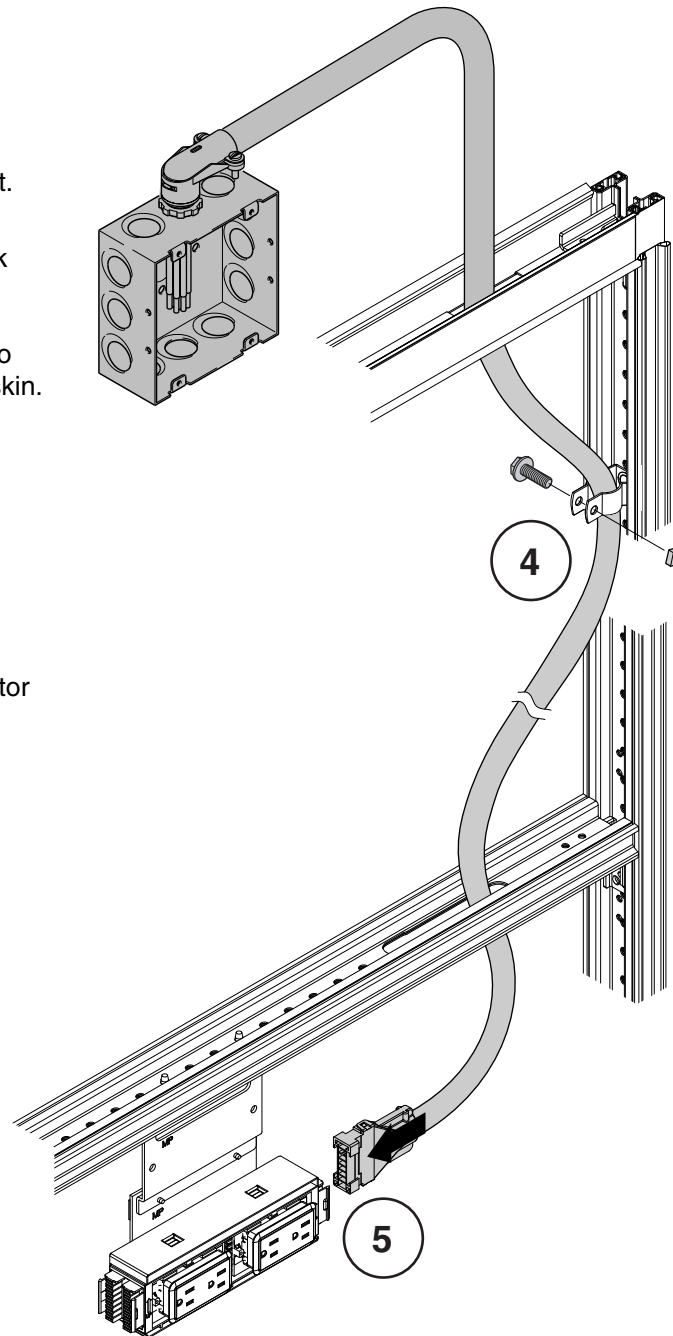
4. Attach conduit to the strain relief bracket.

5. Connect the power in to the power block or harness-to-harness four way connector.

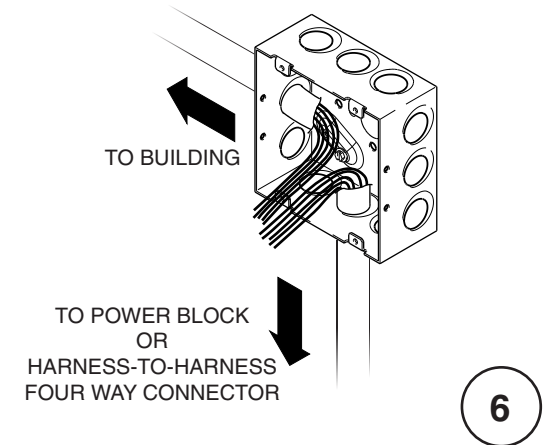
NOTE: NEVER attach harness connector to the power block connection closest to the skin.

6. Connect power in to the building supply source.

- For the multipurpose hardwire in feed - Electrician to tie into junction box.
- For the multipurpose modular in feed - Electrician to tie plate with modular connector into junction box.



HARDWIRE



MODULAR

