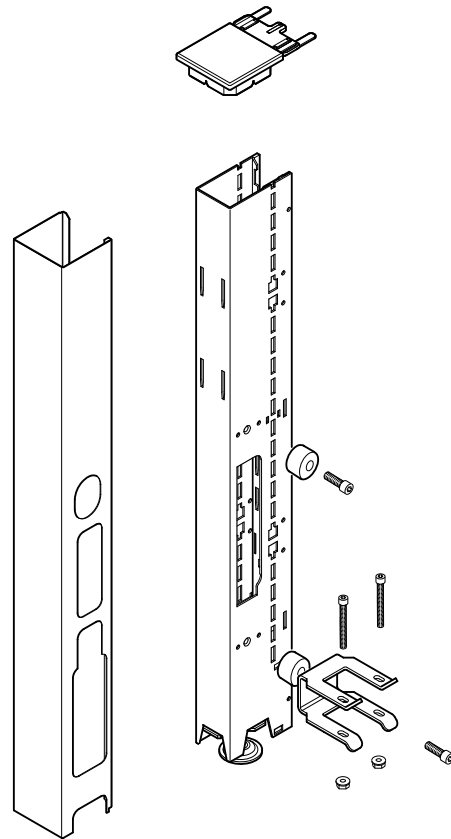
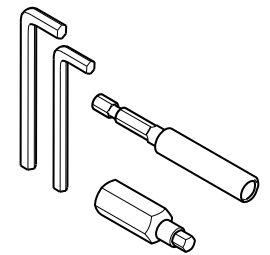
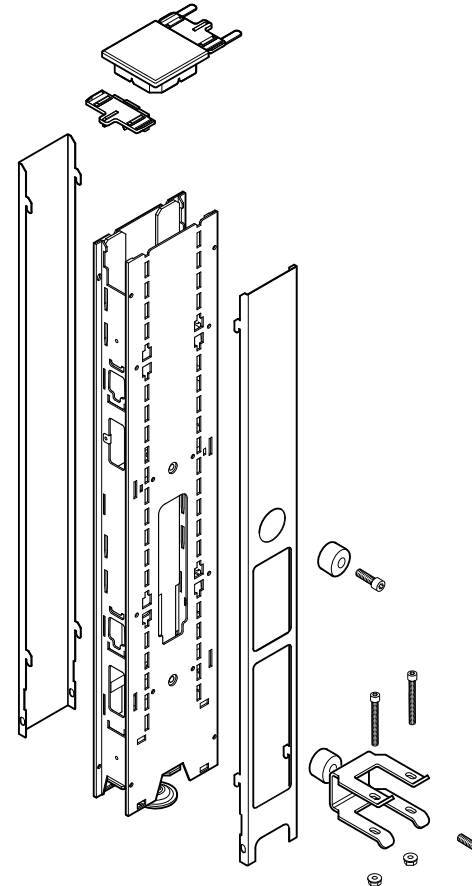


'L' JUNCTION



'T' JUNCTION



1/4" & 3/16" Allen wrenches
or Hex Bit drivers

If you have a problem, question, or request, call your local dealer, or Steelcase Line 1 at **888.STEELCASE** (888.783.3522) for immediate action by people who want to help you. (Outside the U.S.A., Canada, Mexico, Puerto Rico, and the U.S. Virgin Islands, call: 1.616.247.2500) Or visit our website: www.steelcase.com

© 2011 Steelcase Inc.
Grand Rapids, MI 49501
U.S.A.

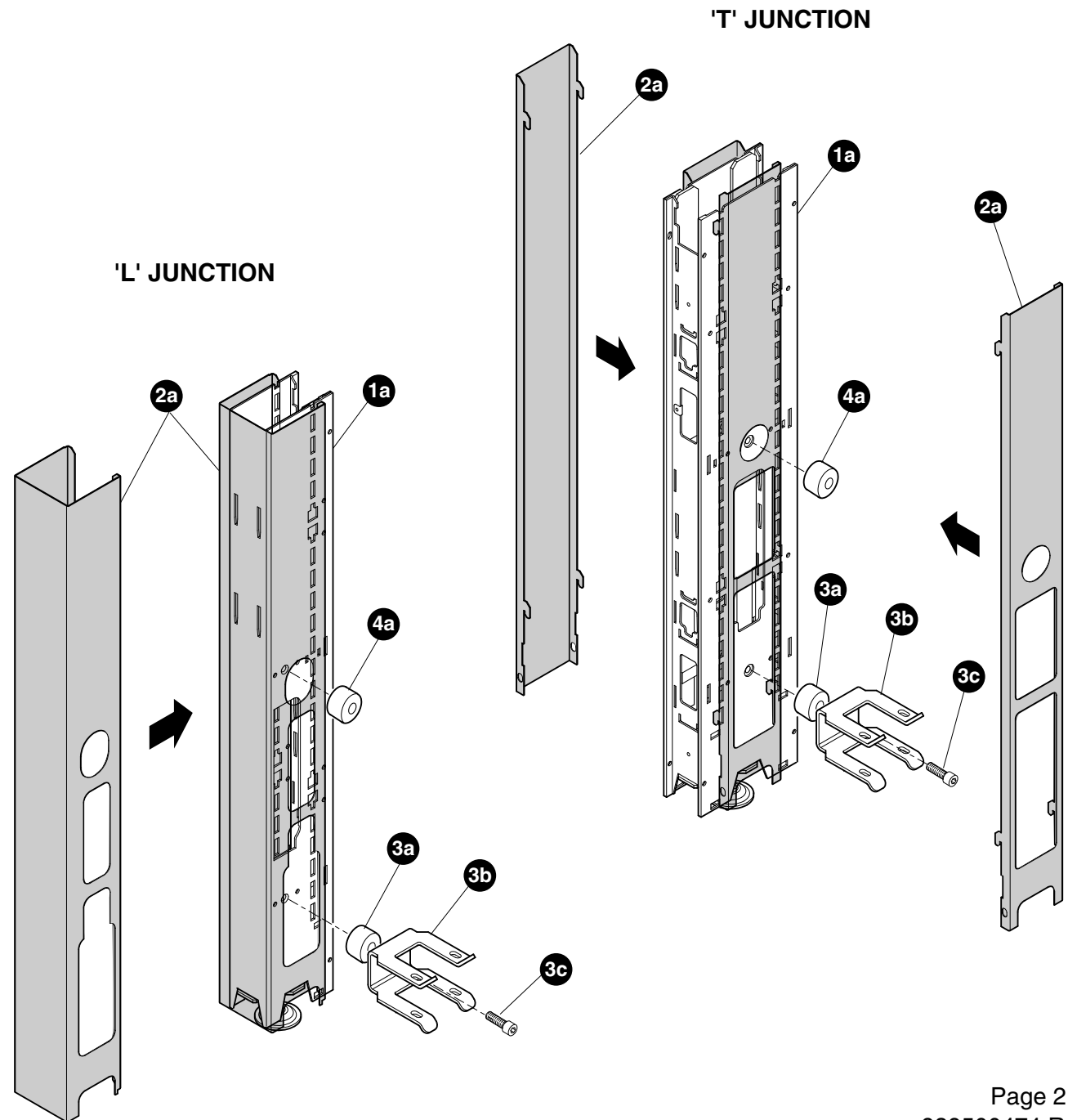
Printed in U.S.A.

1. Install vertical junction (1a) and level the system in the normal manner.

2. Install the vertical trim (2a) to the junction

3. Install one round standoff spacer (3a) and the 4-prong beam attachment bracket (3b) using a 5/16-18 x 1-1/2" socket head cap screw (3c) (provided in hardware package).

4. Place the second round standoff spacer (4a) into the round opening of vertical trim (2a).



5. With the c:scape beam covers removed, engage the lower frame tubes (**5a**) on the beam into the 4-prong bracket (**3b**).

6. Thread 5/16-18 x 1-1/2" socket head cap screw (**6a**) through the inline connector (**6b**) (on the beam) and round standoff spacer (**4a**) into the junction post (**1a**) and tighten securely.

7. Install two (2) 1/4-20 x 2-1/4" socket head cap screws (**7a**) through the 4-prong bracket (**3b**) and beam frame tubes (**5a**) then attach two (2) hex nuts (**7b**) and tighten securely. (Screws and nuts provided in hardware package).

8. Re-install covers to the c:scape beam.

9. Install remaining Answer trim components in the usual manner.

10. If routing power from c:scape beam to Answer panel, run conduit through opening at base of Answer vertical trim.

