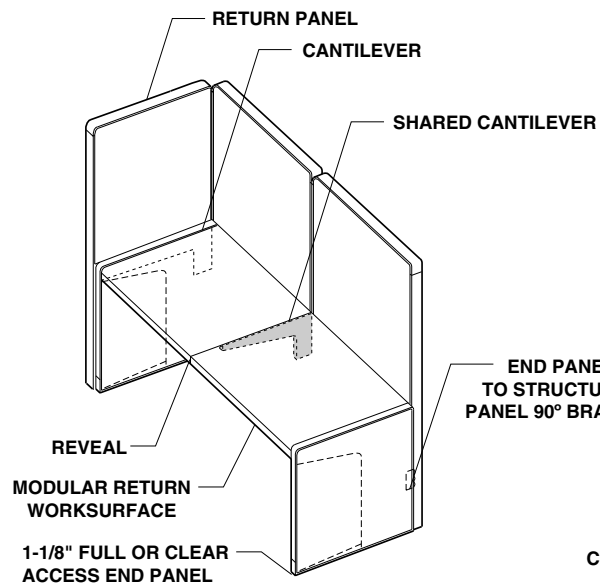
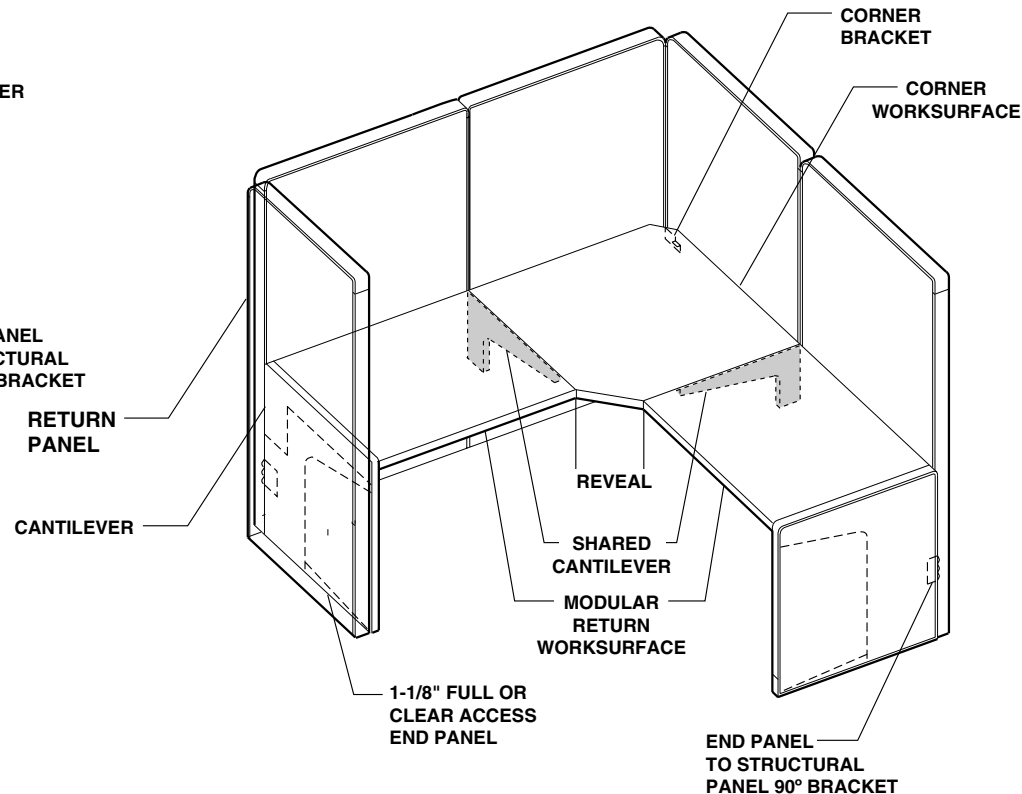


Installation Of Cantilevered Worksurface And Shared Supports Onto A Series 9000® Structural Panel System (Includes corner worksurface)



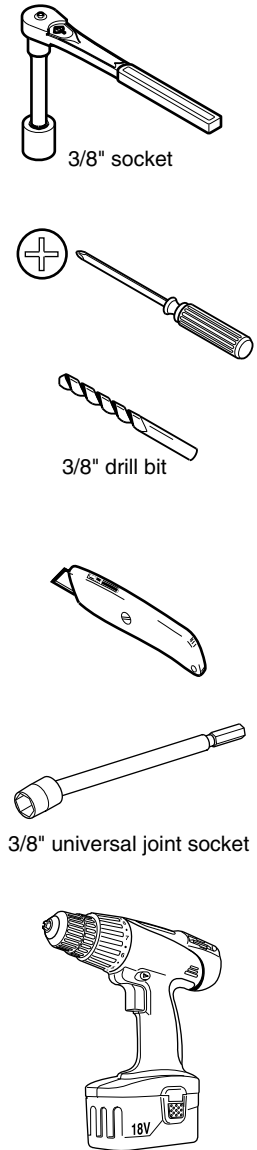
Typical Straight Unit, consisting of:

- Shared Cantilever
- Reveal
- End Panel to Structural Panel 90° Bracket
- Modular Return Worksurface
- 1-1/8" Full, Clear Access End Panel or Cantilever w/ Return Panel



Typical Straight Unit, consisting of:

- Shared Cantilever
- Corner Worksurface
- Reveal
- Corner Bracket
- End Panel to Structural Panel 90° Bracket
- Modular Return Worksurface
- 1-1/8" Full, Clear Access End Panel or Cantilever w/ Return Panel



If you have a problem, question, or request, call your local dealer, or Steelcase Line 1 at **888.STEELCASE** (888.783.3522) for immediate action by people who want to help you.
(Outside the U.S.A., Canada, Mexico, Puerto Rico, and the U.S. Virgin Islands, call: 1.616.247.2500)
Or visit our website: www.steelcase.com

© 2007 Steelcase Inc.
Grand Rapids, MI 49501
U.S.A.

Printed in U.S.A.

NOTE: Woodcore tops are substantially heavier than steel tops.
It is recommended that two (2) people are used to perform this installation.

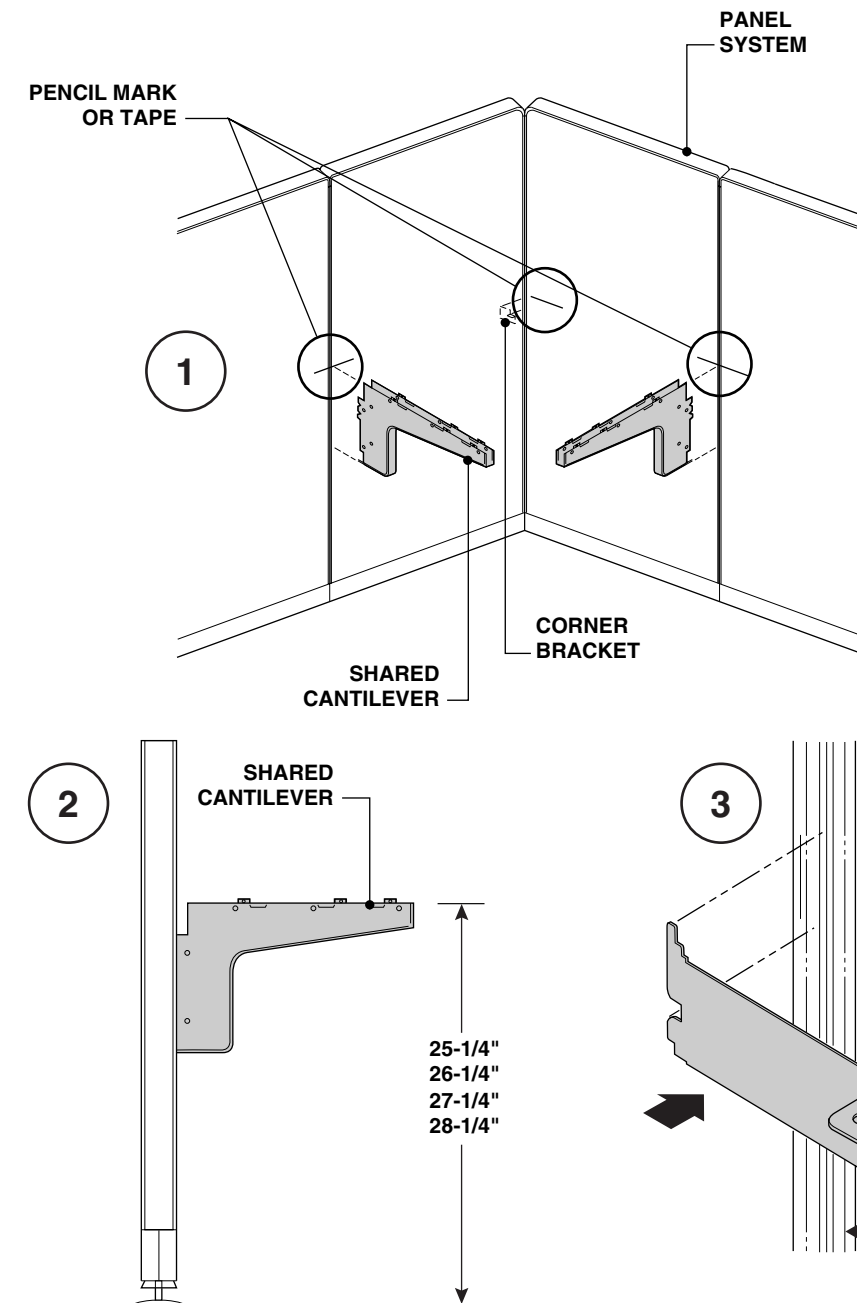
Corner Worksurface Installation

1. Shared Cantilever Installation

Refer to recommended worksurface height chart below. After selecting the desired height, measure up from the floor and place a pencil mark or piece of tape on panel upright to indicate location of shared cantilevers and corner bracket.

2. Hold shared cantilevers in a vertical position and insert tabs into slots on panel uprights. Push down, engaging tabs into slots. Check engagement of retainer lock by lifting up on cantilever.

3. Corner Bracket Installation
Insert corner bracket tabs into slots on panel upright. Push down engaging tabs into slots.



Recommended Work Surface Height

26-3/4"
27-3/4"
28-3/4"
29-3/4"

Shared Cantilever Height

25-1/4"
26-1/4"
27-1/4"
28-1/4"

4. RH Modular Return Worksurface Installation

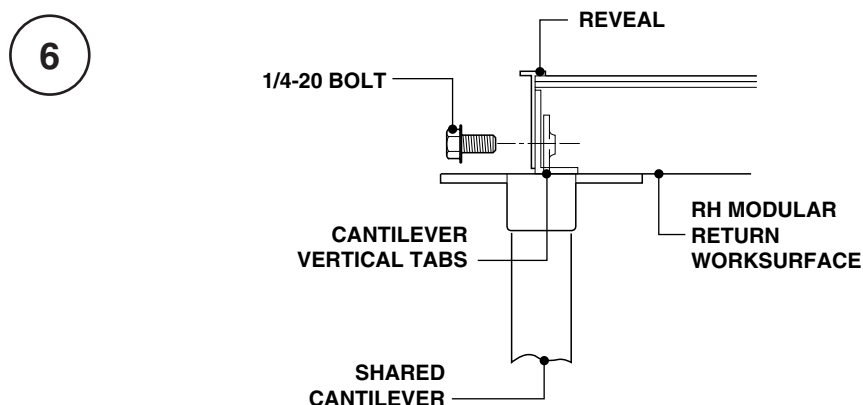
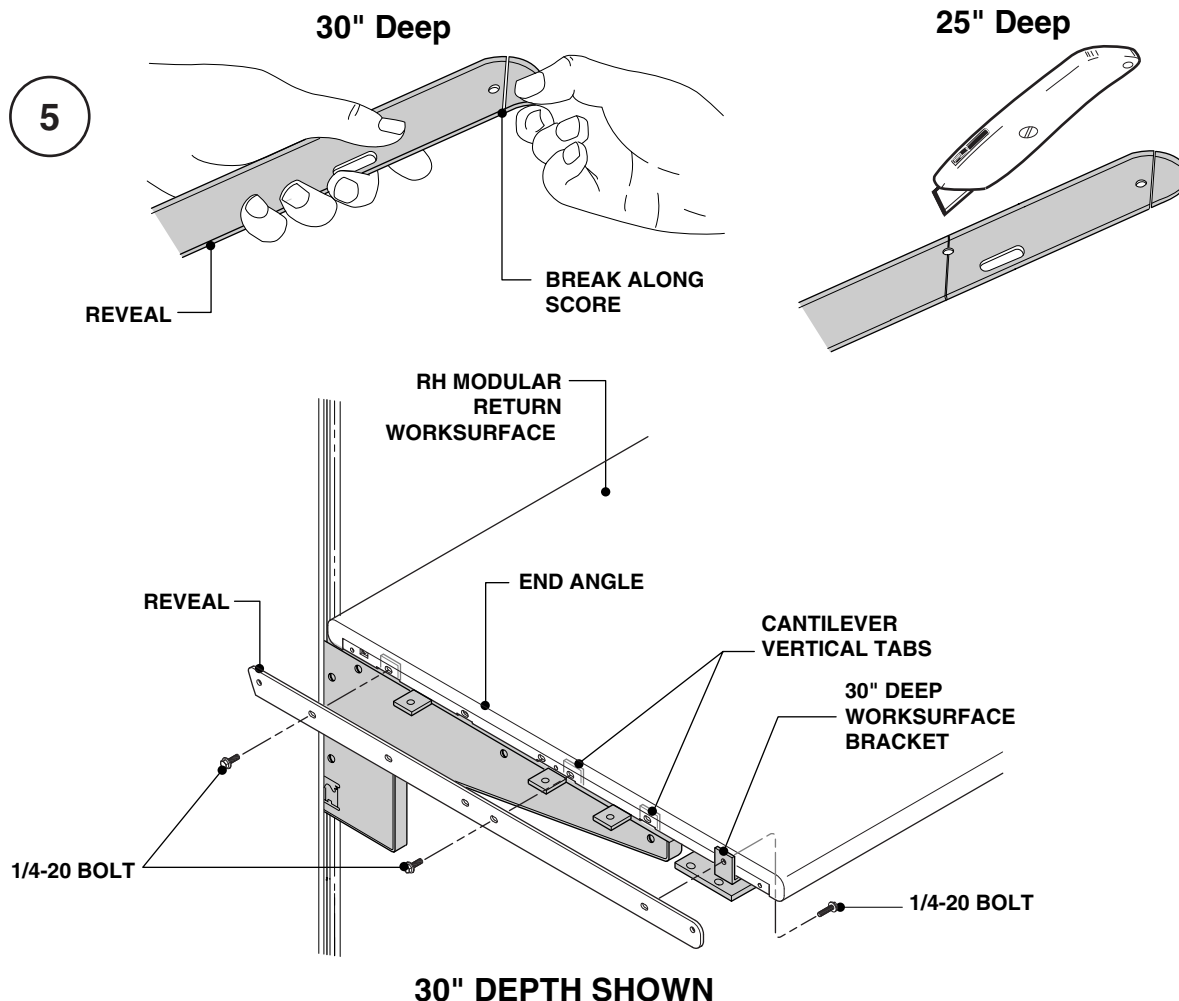
The right hand modular return worksurface should be installed per installation directions No. 939501125, with the exception that the shared cantilever is used in lieu of a standard end support at the left end.

5. Prepare the worksurface reveal for installation by breaking of the back corner along the scored line for 30" deep; For 25" deep, break along score line approximately 5" in by cutting top edge then snapping off. Then overlap the vertical tabs on the shared cantilever with the worksurface end angle. Install the worksurface reveal over the end of the modular return worksurface with its cut end at the back. Secure the top with (2) 1/4-20 bolts.

NOTE: Do not force or impact plastic reveals with hammers, mallets, etc. during installation, as damage to reveals may occur.

6. 30" Deep worksurface Bracket Installation

A special bracket is required on 30" deep worksurfaces, if you are installing a 25" deep unit, proceed to step 7. Align the bracket with the clearance hole in the end angle of the worksurface and secure with a 1/4-20 bolt.



7. Corner Worksurface Installation

Position corner worksurface onto corner bracket and shared cantilevers. Secure worksurface to cantilevers using (2) #10 x 7/8" screws each side. Drill (2) 1/8" pilot holes in worksurface. Secure corner bracket with (2) #10 x 7/8" screws.

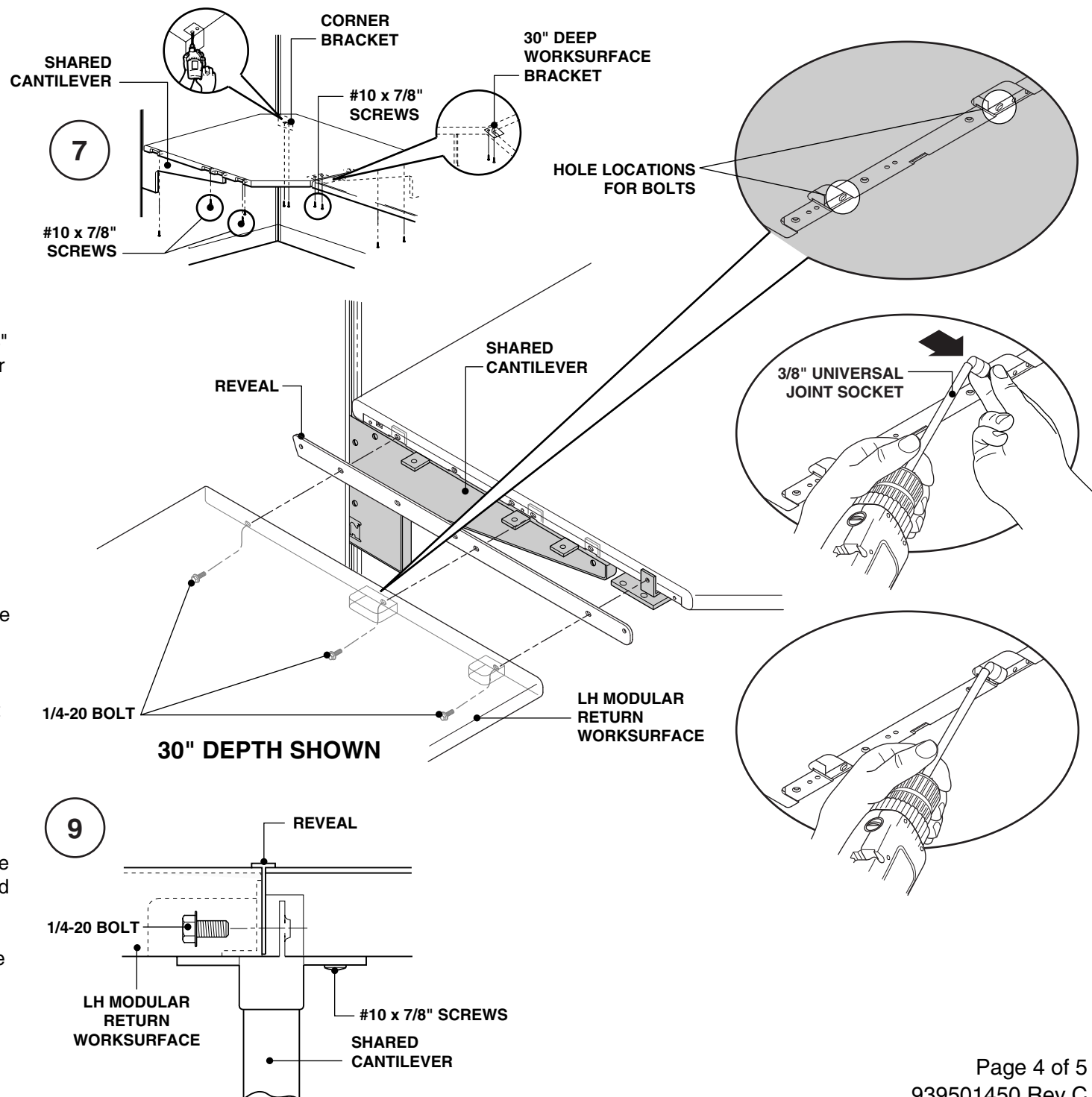
NOTE: For 30" deep worksurface, also secure the (2) 30" deep brackets to the corner worksurface with (2) #10 x 7/8" wood screws in each bracket.

8. LH Modular Return Worksurface Installation

The left-hand modular return worksurface should be installed per assembly direction number 939501125, with the exception that the shared cantilever is used in lieu of a standard end support at the right end.

9. Prepare the worksurface reveal for installation by breaking off the back corner along the scored line. Then butt the left-hand return worksurface up to the corner worksurface. Install the reveal and secure the top with (2) 1/4-20 bolts.

NOTE: For 30" deep worksurface secure the special bracket with (1) 1/4-20 bolt. Start the screws, then align the reveal and tighten.



Straight Worksurface Installation

1. Shared Cantilever Installation
Refer to steps 1 & 2, disregarding the corner bracket installation.

2. Modular Return Installation
The right & left hand modular return worksurface should be installed per assembly direction number 939501125 (supplied w/ return), with the exception that the shared cantilever is used in lieu of a standard cantilever, where the returns butt together.

3. Prepare the worksurface reveal for installation by breaking off the back corner along the scored line. Then overlap the vertical tabs on the shared cantilever with the right-hand worksurface end angle. Then butt the left hand worksurface up to the right hand worksurface. Install the reveal and secure the top with (2) 1/4-20 bolts.

NOTE: For 20" deep worksurface secure the front edge with (1) 1/4-20 bolt and nut. Start the screws, then align the reveal and tighten.

