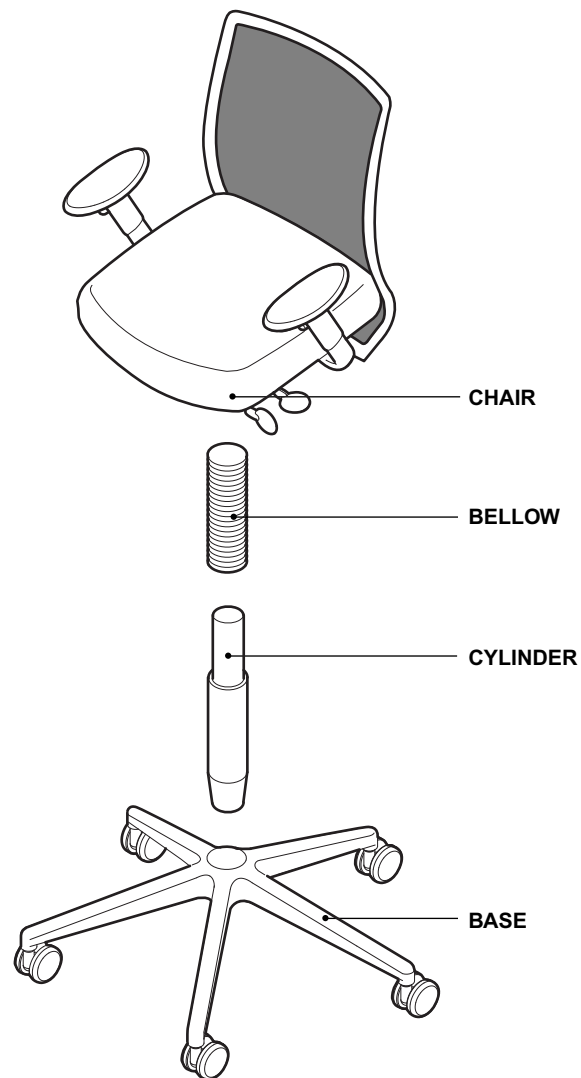


If you have a problem, question, or request, call your local dealer, or Steelcase Line 1 at **888.STEELCASE** (888.783.3522) for immediate action by people who want to help you. (Outside the U.S.A., Canada, Mexico, Puerto Rico, and the U.S. Virgin Islands, call: 1.616.247.2500) Or visit our website: [www.steelcase.com](http://www.steelcase.com)

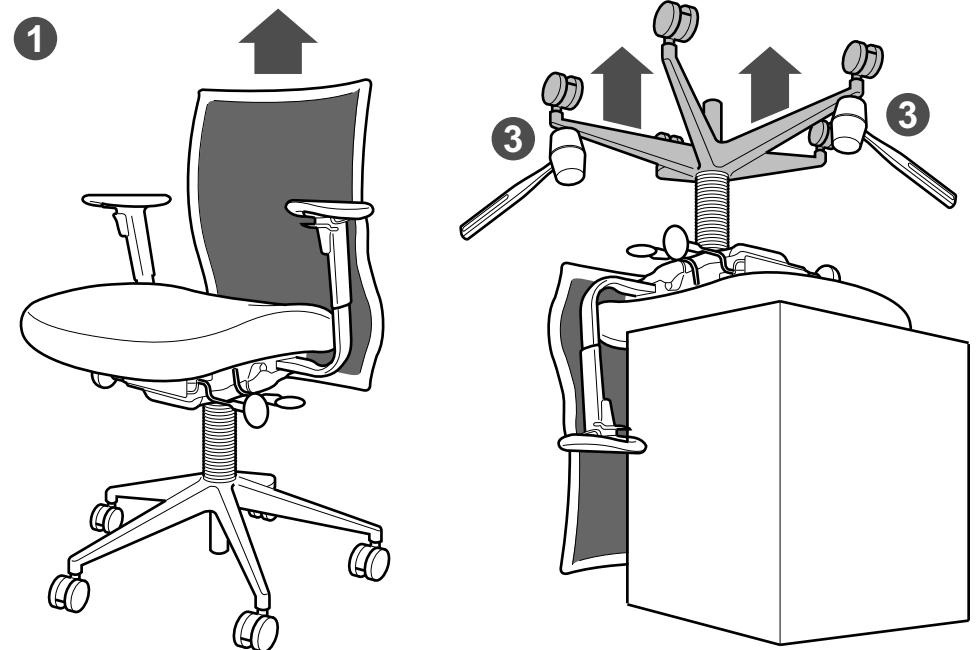
© 2003 Steelcase Inc.  
Grand Rapids, MI 49501  
U.S.A.  
Printed in U.S.A.

# Cylinder Replacement

(also applies to base and bellow replacement)



1. Adjust chair to maximum seat height.
2. Turn chair upside down and set on stand or table.
3. To remove base, tap firmly alternately on opposite legs near hub with rubber or leather mallet.



## Cylinder Replacement (continued)

(also applies to base and bellow replacement)

**4.** Remove height adjust column from chair control using disassembly tool for taper fit joint (Refer to assembly direction 939504593), or twisting and pulling using pipe wrench.

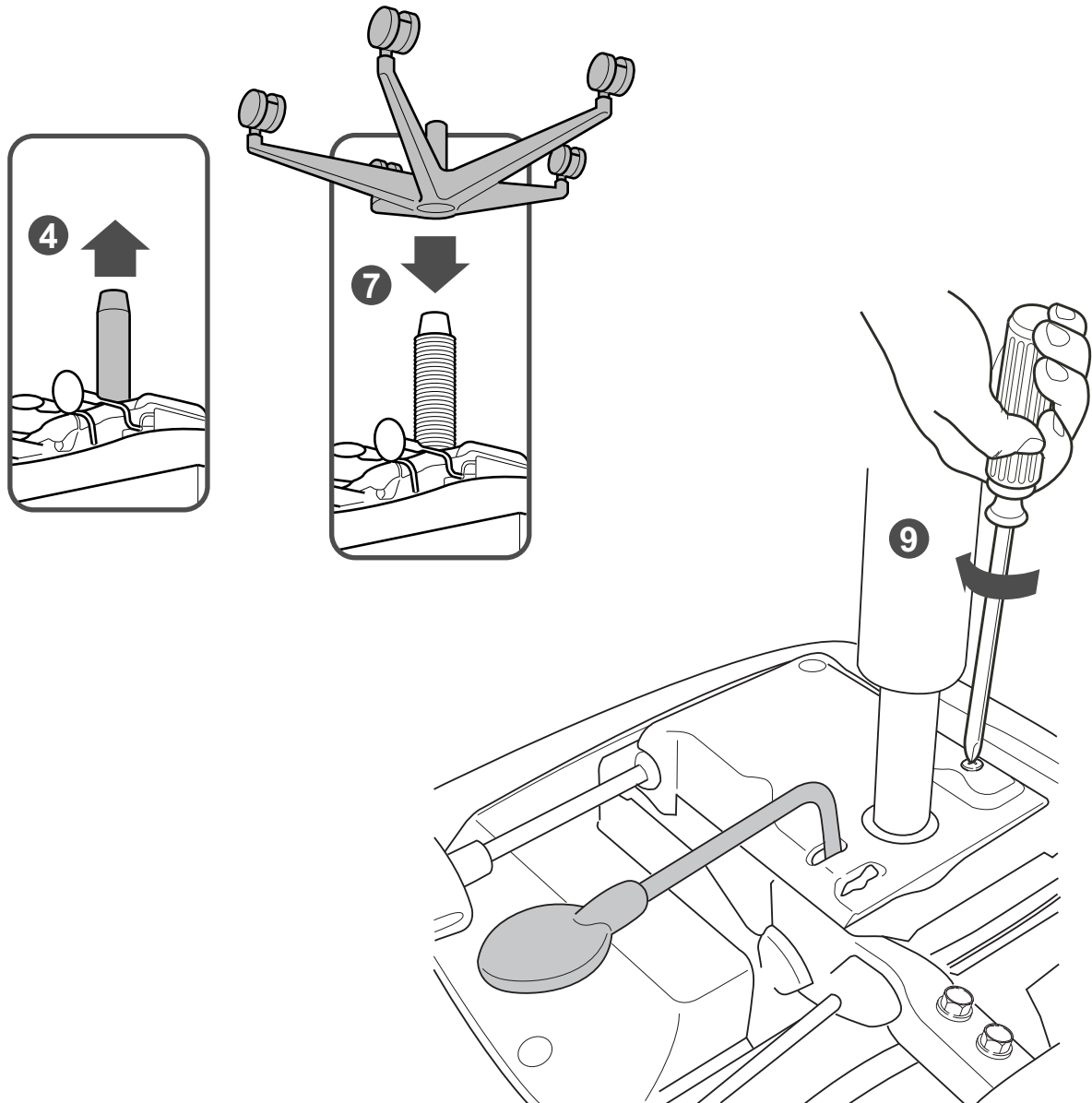
**5.** Remove bellow from old cylinder and install on new cylinder by pushing it down from top of cylinder column to just past the taper.

**6.** Install new cylinder by inserting tapered cylinder end into chair control housing and tapping firmly with rubber mallet.

**7.** Replace base assembly by inserting hub onto tapered standpipe of cylinder, then tap firmly with rubber mallet.

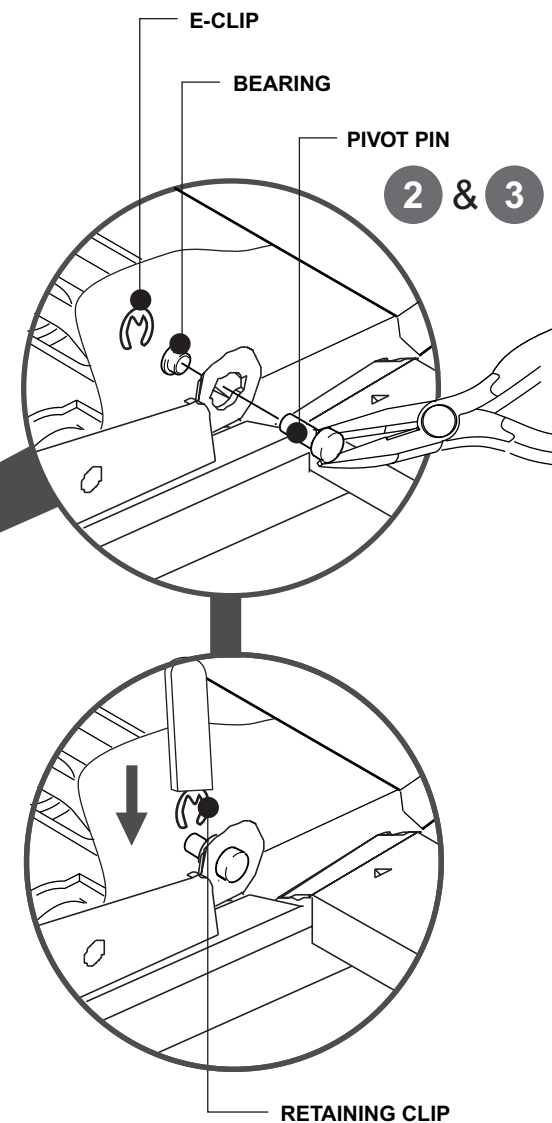
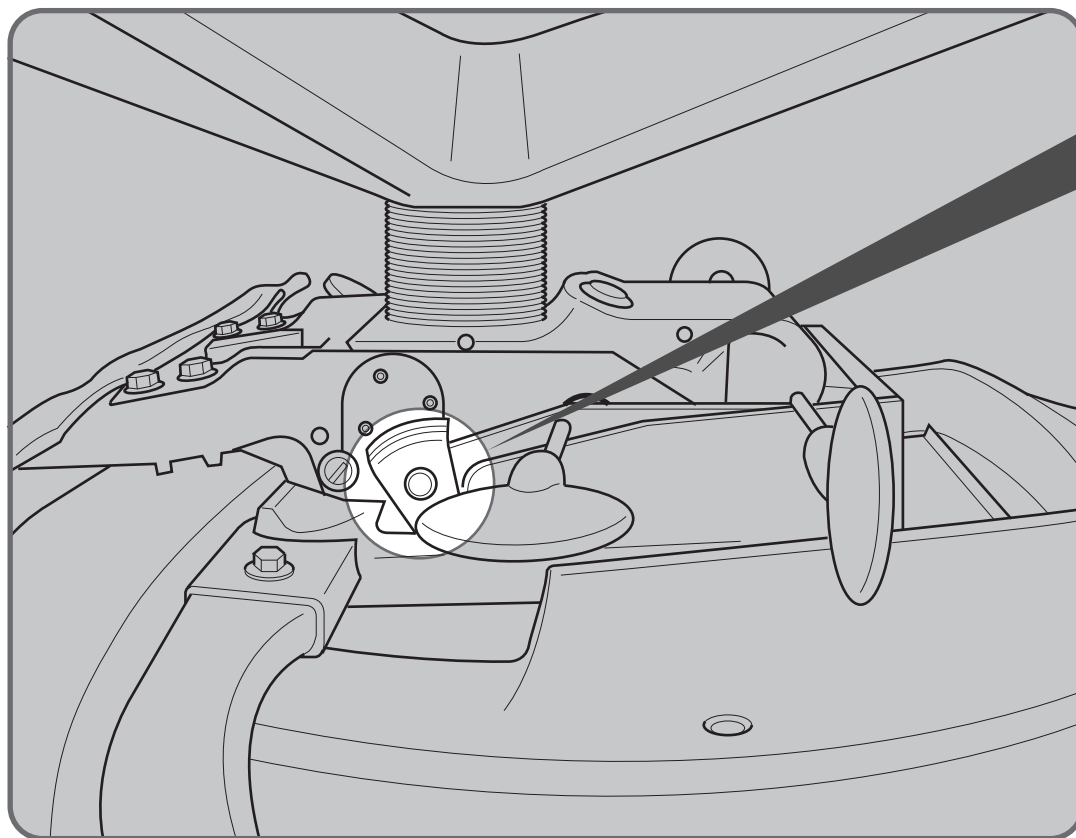
**8.** Turn chair right side up and seat taper fit joints by sitting carefully in chair.

**9.** If required, adjust screw until cylinder adjustment handle has minimal slop, but the cylinder does not actuate.



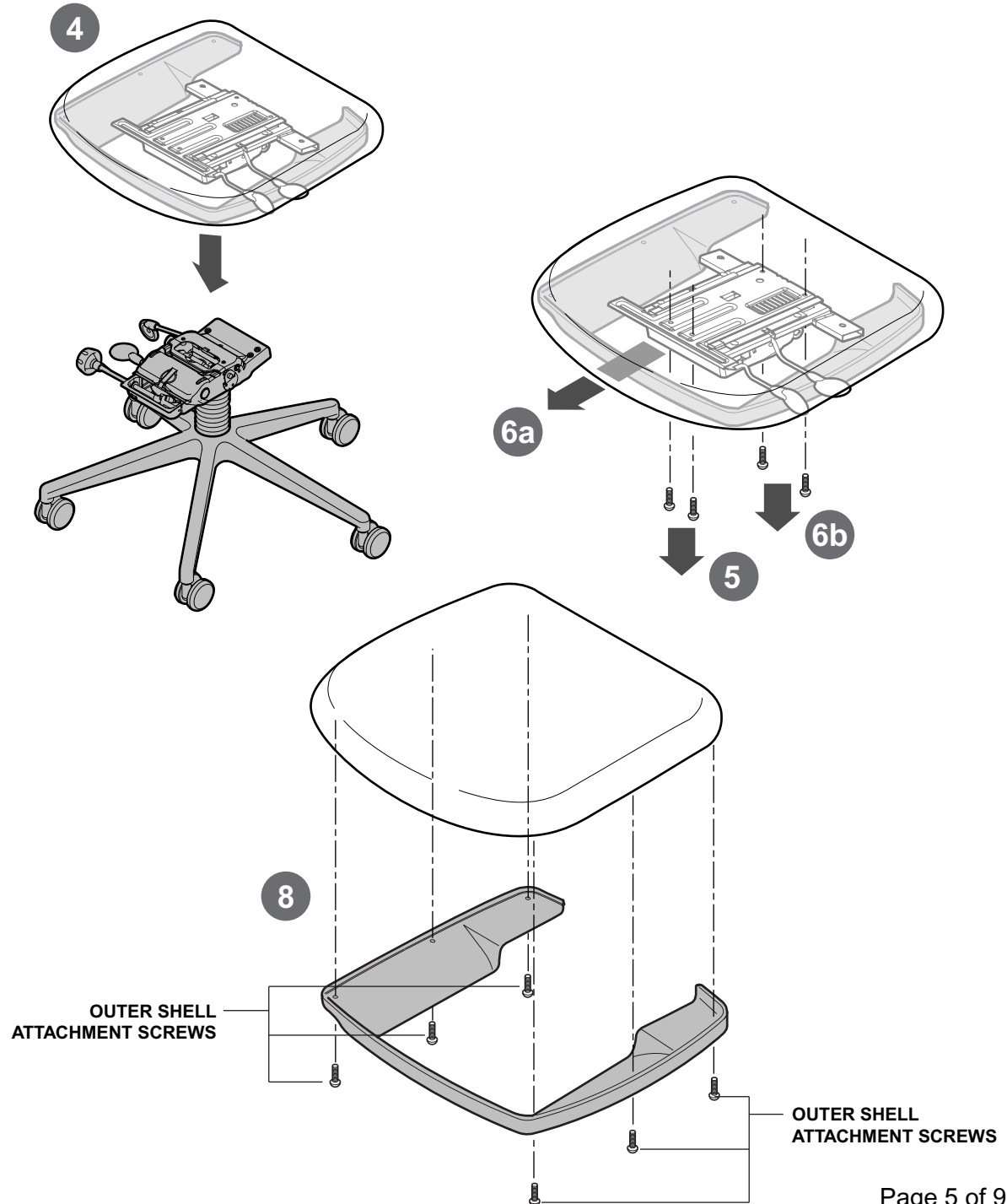
## Seat Cushion Assembly Replacement

1. Turn chair upside down and set on stand or table.
2. Remove E-clips from grooves of the pivot pins.
3. Pull out the pivot pins from controls (controls, back and base will come loose).



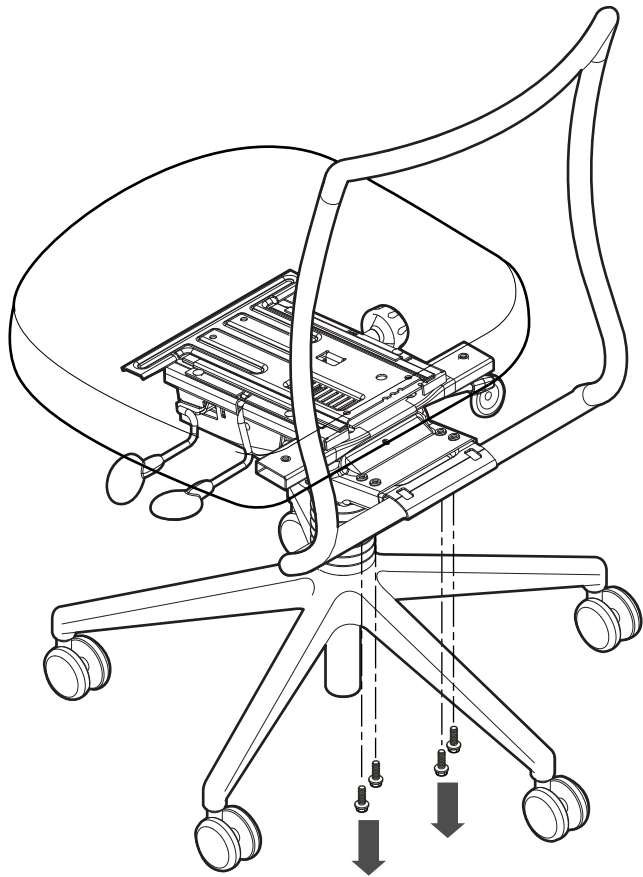
## Seat Cushion Assembly Replacement (continued)

4. Remove controls, back and base from the seat cushion.
5. Unscrew front two attachment screws.
6. Slide controls up (6a) and unscrew the back two attachment screws (6b).
7. Remove the control from the seat cushion.
8. Unscrew six attachment screws from the outer shell.
9. Remove the outer shell.
10. Replace seat cushion.
11. Place outer shell back onto the new seat cushion and screw in six attachment screws.
12. Put control on and screw the back two attachment screws. (Torque 25-80 in/lbs.)
13. Slide controls back and screw in the front two attachment screws. (Torque 25-80 in/lbs.)
14. Place controls, back, and base back on seat cushion and push in pivot pins and attach E-clips.

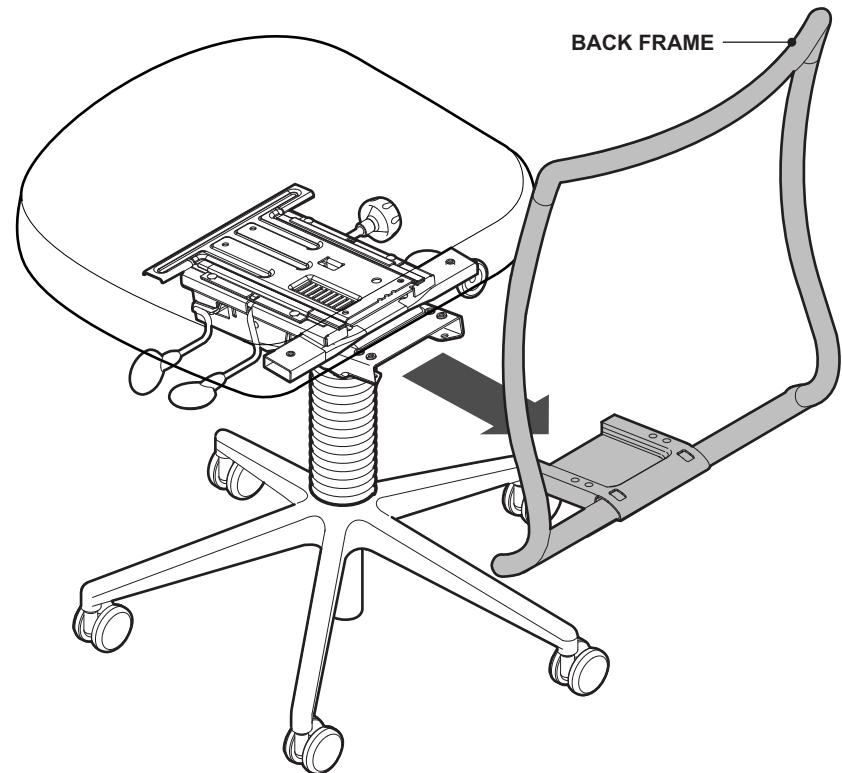


## Back Replacement

**1.** Remove four (4) attachment screws from the back bracket.

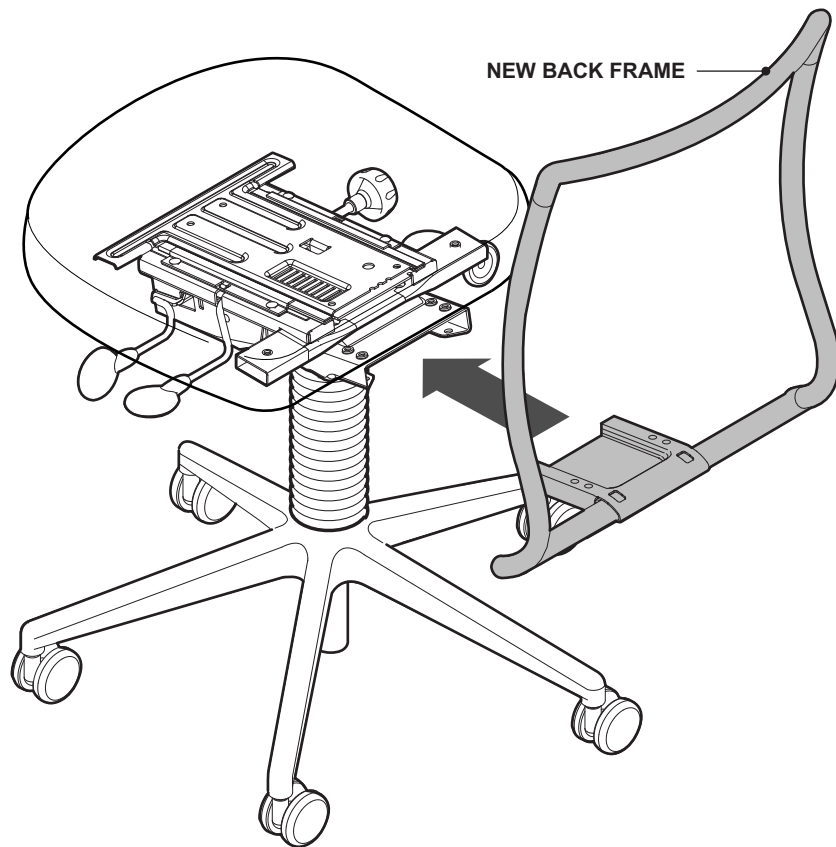


**2.** Remove the back frame from the bracket.

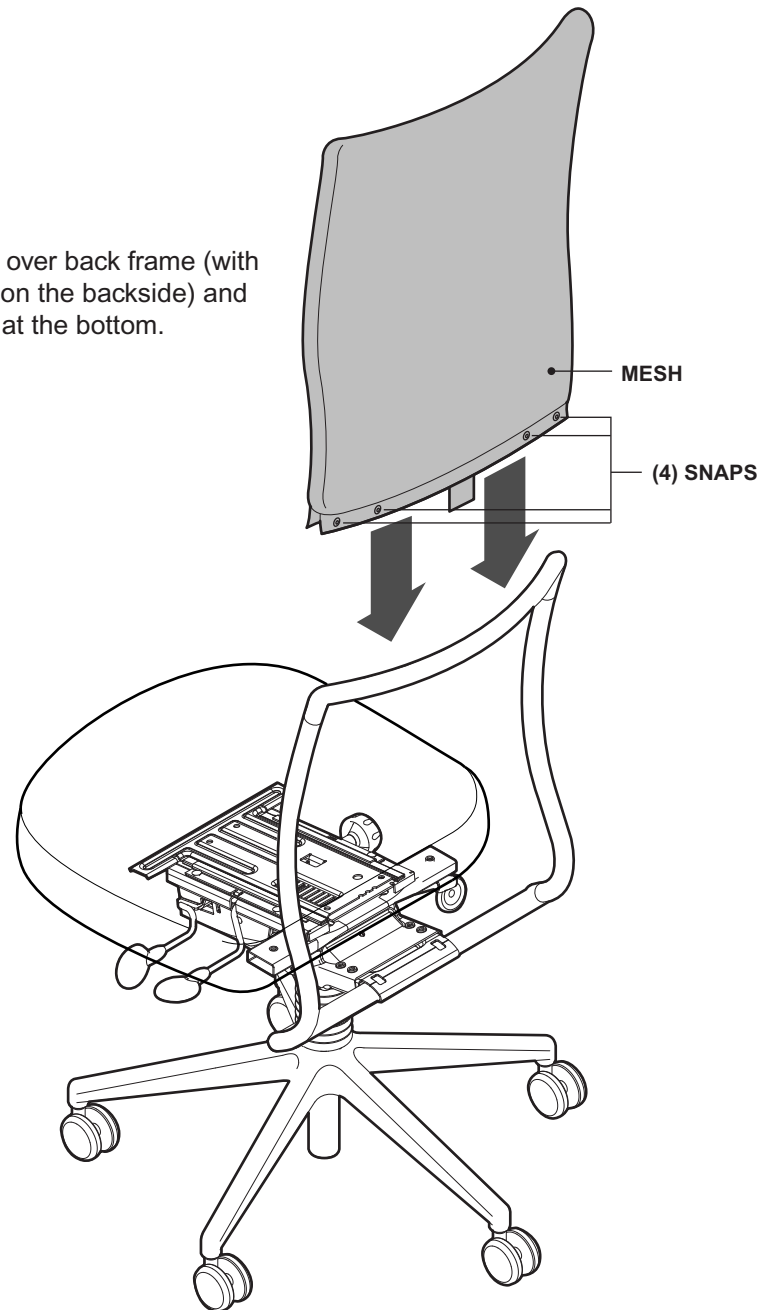


## Back Replacement (continued)

- 3.** Install the new back frame and insert four (4) attachment screws. Set the torque of the screws to 150-250 in/lbs.

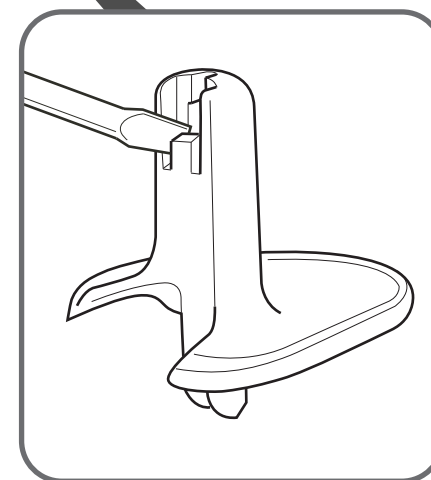
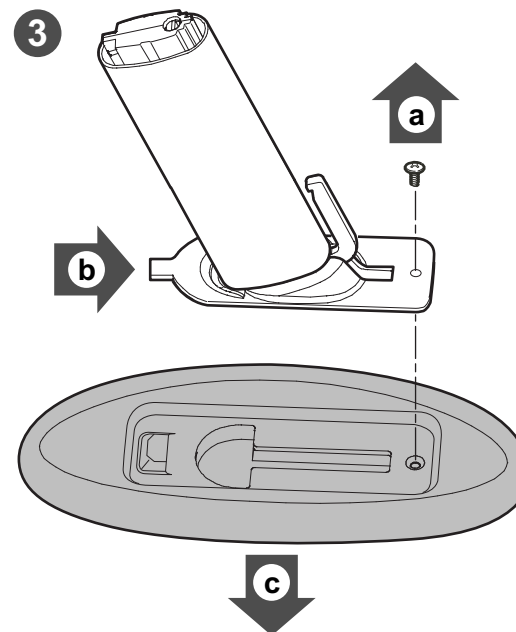
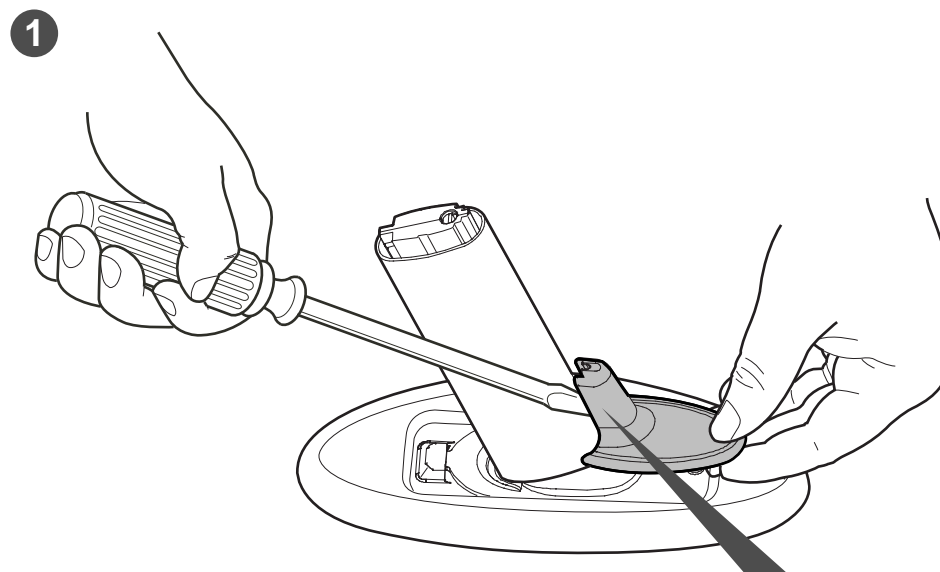
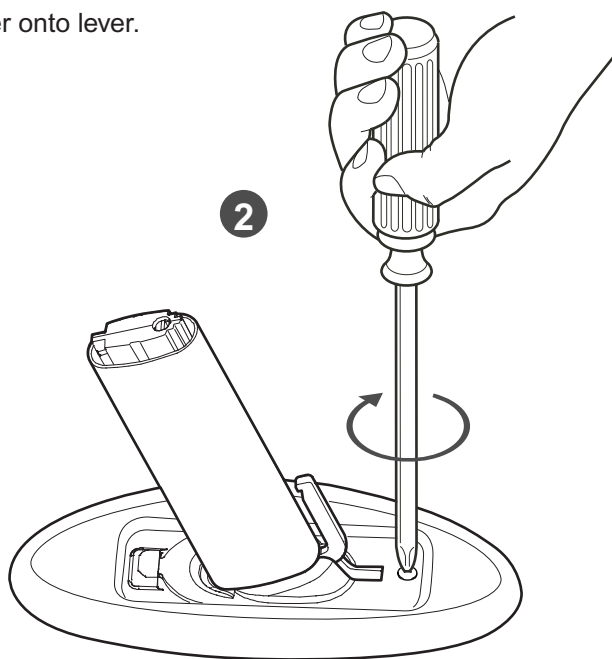


- 4.** Pull mesh over back frame (with Turnstone tag on the backside) and snap together at the bottom.



## Arm Cap Replacement

1. Remove trigger from lever. (may require use of a pick.)
2. Remove screw from arm cap.
3. Remove old arm cap.
4. Insert back tab of arm plate into new arm cap.
5. Attach screw to arm cap.
6. Slide trigger onto lever.



Back View of Trigger



## Arm Replacement

1. Adjust chair to maximum height.
2. Turn chair upside down and set on stand or table.
3. Remove screw from the stretcher and pull out arm.  
(May require tapping arm with rubber mallet.)
4. Install new arms and replace screws.

**IMPORTANT:** Set torque of screws to 175-300 in/lbs.

