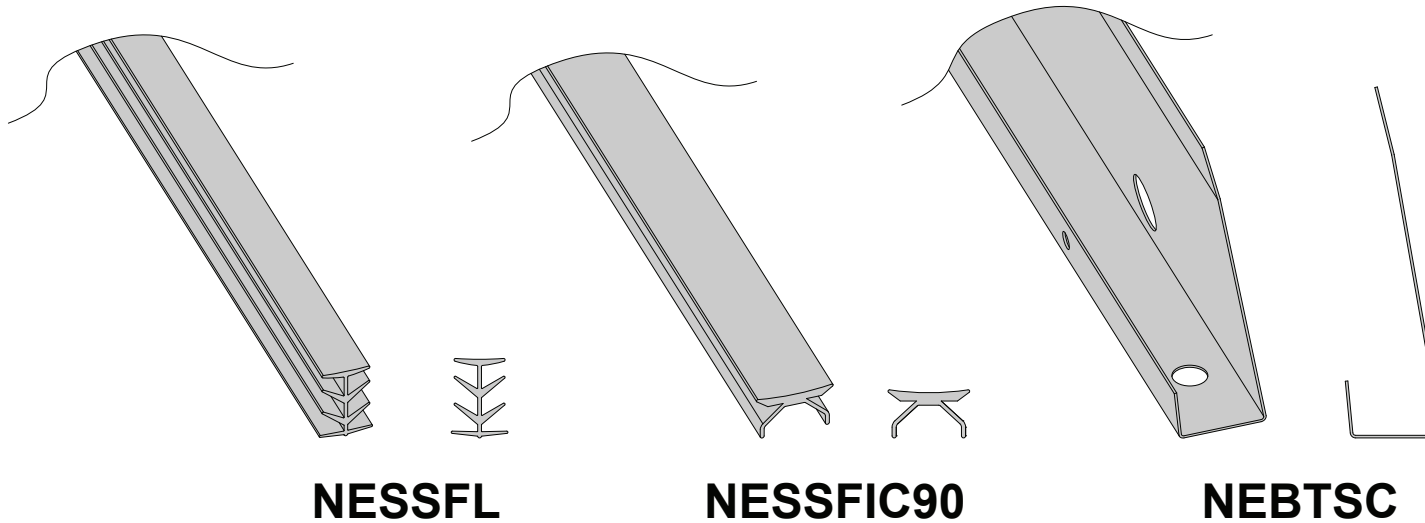


Everwall™ Flush Skin Seals: Inline seal, 90-degree Inside Corner Seal, Straight Cove Base Trim (NESSFL, NESSFIC90, NEBTSC)

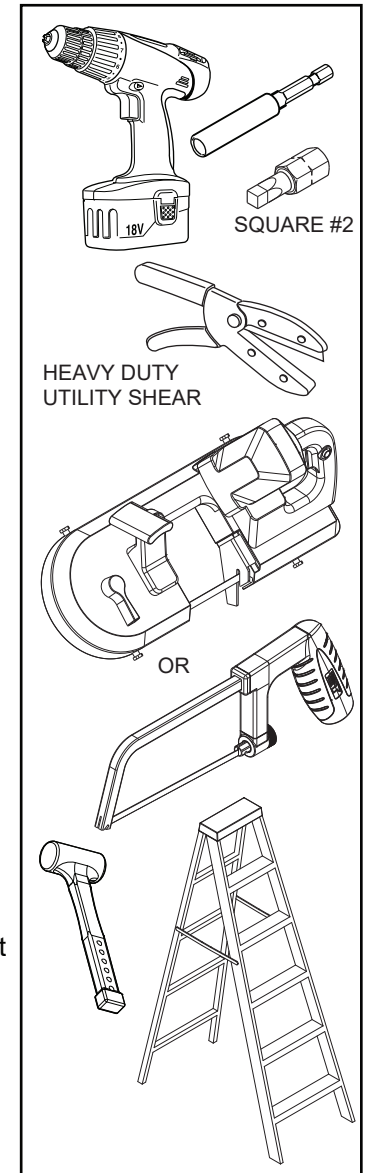


FLUSH SKIN SEALS FOR EVERWALL

- Apply after all skins and glass frames are installed.
- Steel Cove Base Trim is only intended for use with 4" (10.2 cm) wall base molding.
- Seals are not intended for re-use. Changes requiring Everwall skin/frame removal should be re-finished with new seals.
- Floor guides are required at vertical posts and junctions when adjacent to a door frame. Refer to Assembly Directions Everwall Steel Structure #161960.

NOTE:

Everwall Flush Seals are intended for use alongside all Everwall laminate, markerboard, and steel skins. They are not intended for use alongside glass frames and fabric-covered skins.



888.STEELCASE (888.783.3522)

www.steelcase.com

© 2025 Steelcase Inc.

Grand Rapids, MI 49501 U.S.A.

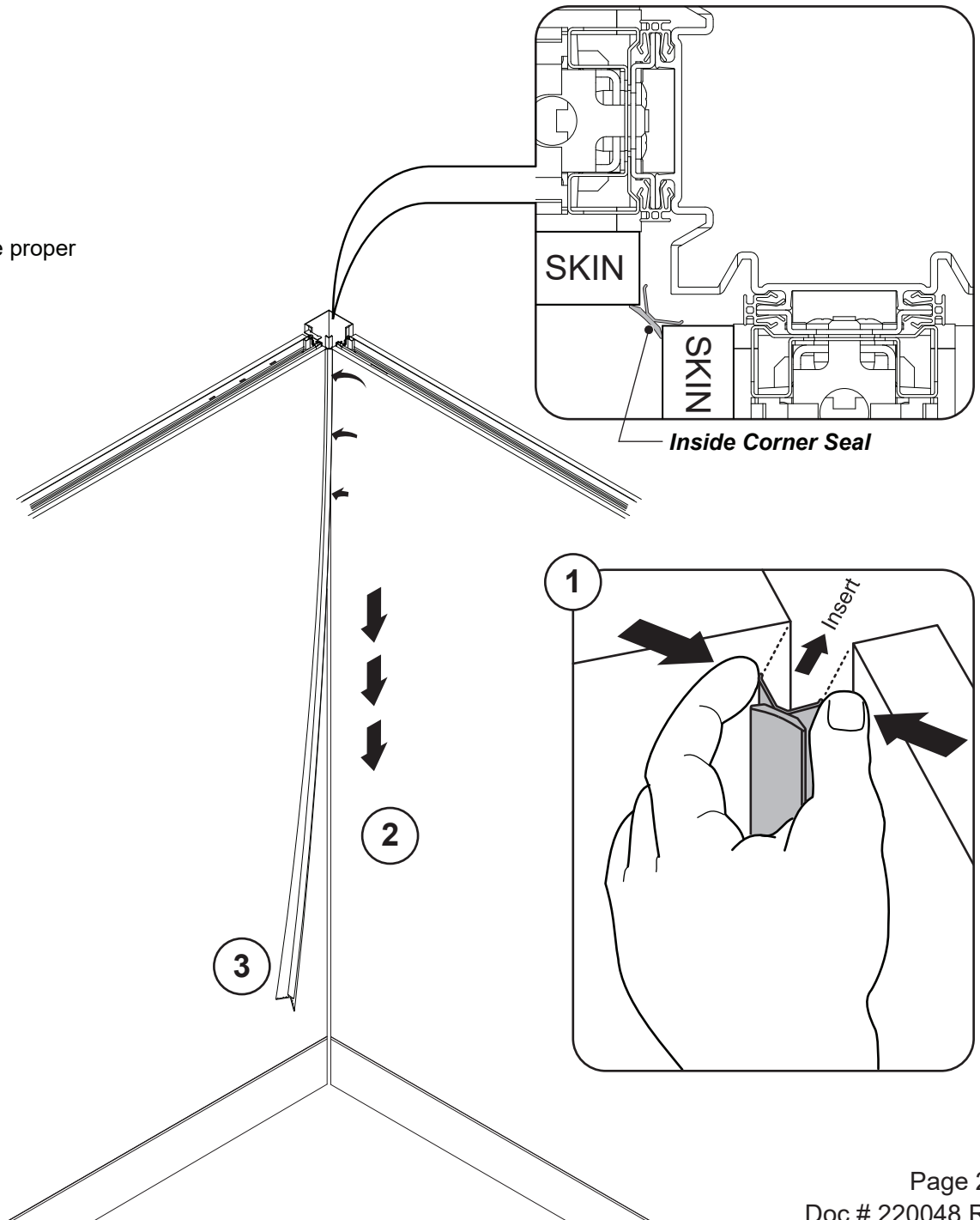
FLUSH SKIN SEALS FOR EVERWALL

- Apply after all skins and cabinets are installed.
- All seals must be seated tight to face of skins to ensure proper performance.

Inside Corner Seal (used only in vertical orientation)

TIP: Install all Inside Corner Seals before any Inline Seals.

1. Starting at top of the wall, use fingers to squeeze rigid legs together and insert seal into vertical inside corner gaps.
2. Continue downward along the vertical length while continuing to work seal into the gap, until the seal reaches the btm edge of the skin.
3. Cut the lower end of the seal flush with the btm edge of the skins. Ensure that the seal is seated firmly in the skins gap.

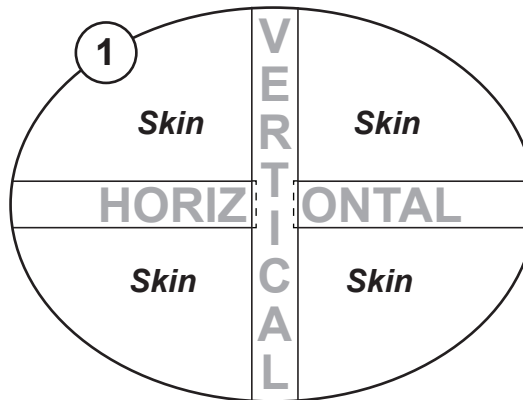


FLUSH SKIN SEALS FOR EVERWALL

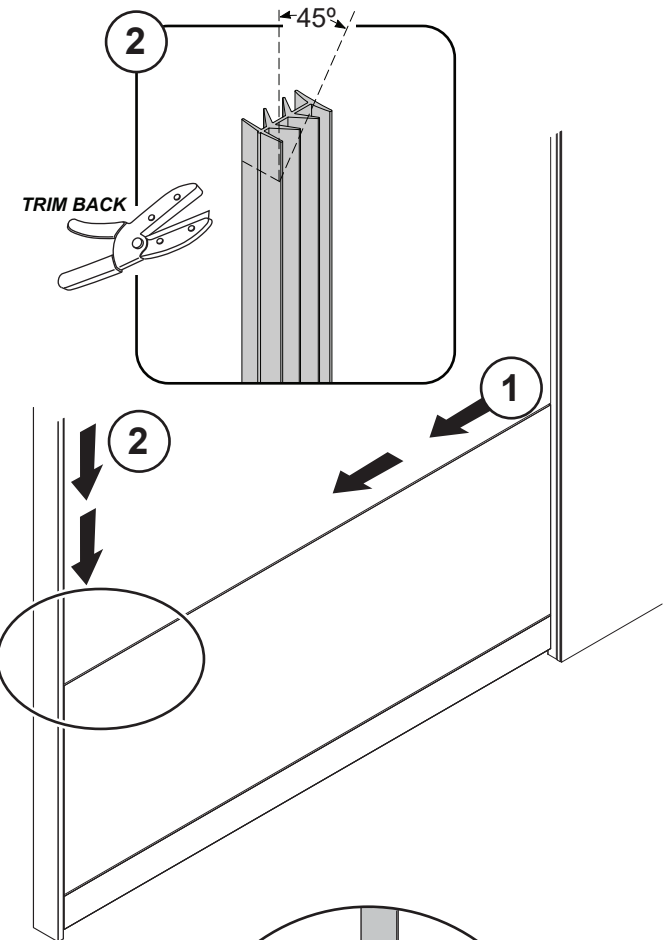
Horizontal & Vertical Seal

- Used in vertical or horizontal orientations
- Install horizontal seals sections first
- No gaps are acceptable where seals meet other seals, brackets, or trims.

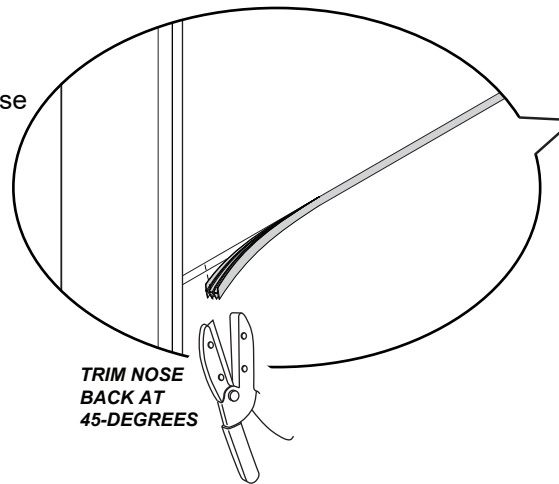
Tip: At the strike side of swing door frames, apply 1/8" (3 mm) bead of clear caulk in the 9 mm gap on both sides of the frame, prior to installing the seals, to prevent movement over time.



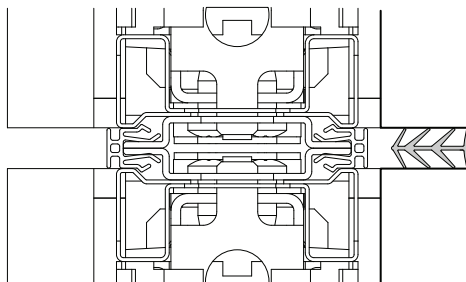
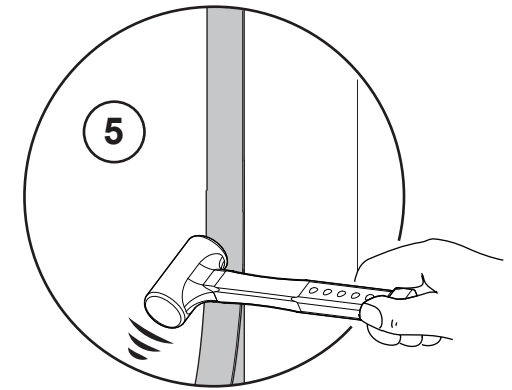
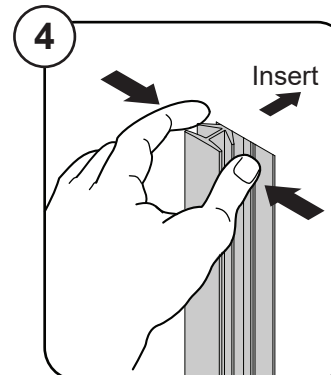
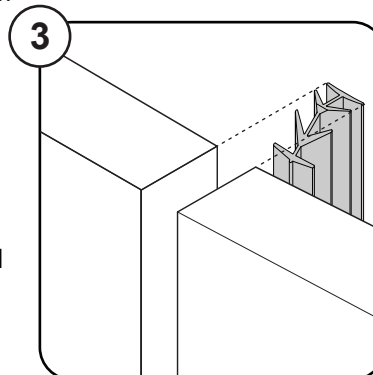
Note: Verticals should be full height and continuous whenever possible.



1. Cut and install horizontal seals first. Ensure cut ends protrude slightly into vertical skin gaps (Fig.1).
2. Next, start vertical seals at the top of skins. Trim nose back 1/2" (12 mm) at a 45-degree angle as shown.
3. Align seal to be flush to top of skins.
4. Use fingers to insert beginning of seal into gap between skins or between skins and trims.
5. Use a clean, small deadblow mallet to finalize the depth of the seal and achieve a uniform appearance.
6. Continue downward along length while working seal into the gaps. Cut the lower end of the seal flush with the btm edge of the skins. Ensure that the seal is seated firmly in the skins gap. Trim nose back 1/2" (12 mm) at a 45-degree angle at all trailing ends of seals.



TRIM NOSE
BACK AT
45-DEGREES



Horizontal /
Vertical Seal

FLUSH SKIN SEALS FOR EVERWALL

Cove Base Trim supports vinyl base trim at the bottom of the wall. It is only intended for use with 4" (10.2 cm) wall base molding.

Tip: Minimum Cove Base Trim installed part length should be 8 inches.

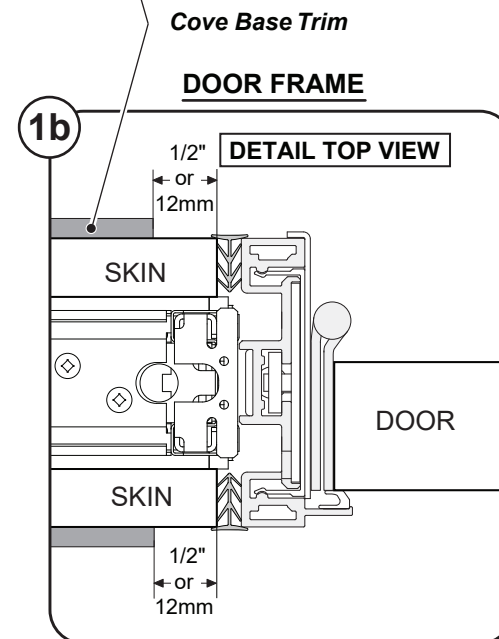
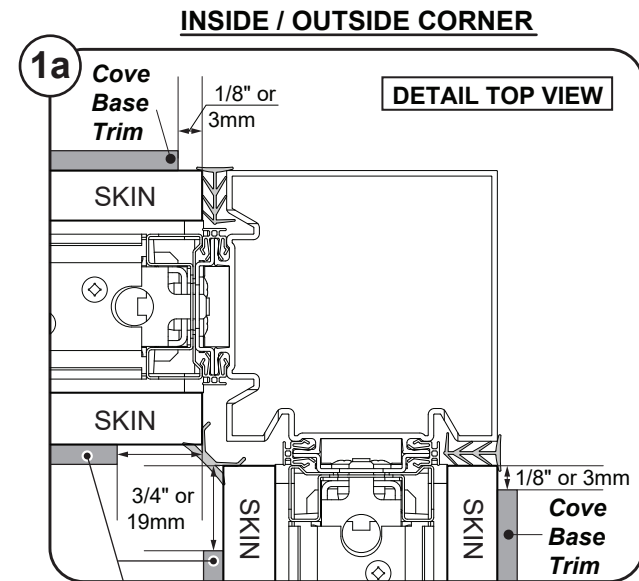
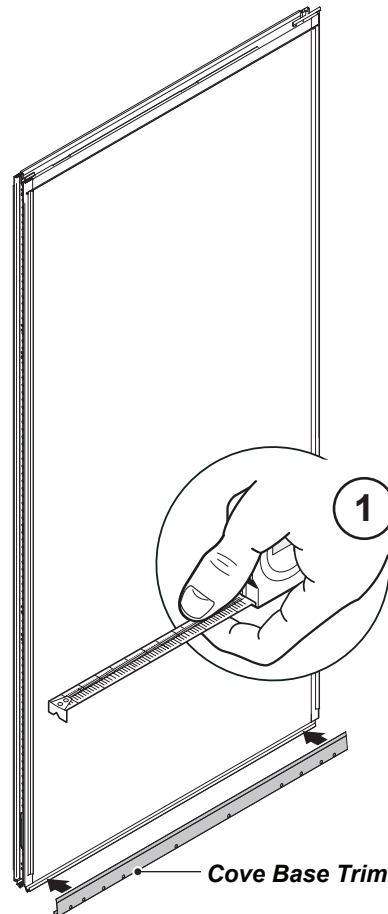
1. Measure length of location where the steel cove base trim will be installed.

1a. Outside corners – base trim should be back from the outside corner 4.5"

Inside corners – base trim should be back from the inside corner 0.75"

1b. Door Frames – base trim should be back from the skin end 0.5"

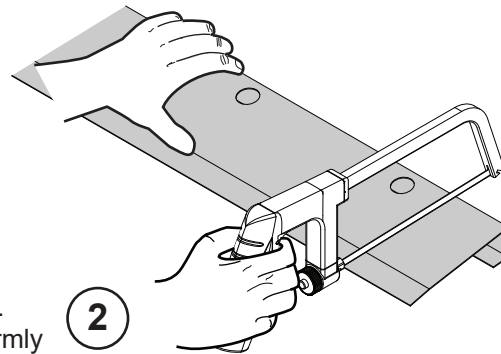
1c. Finished Ends – base trim should be back from the end face 1.5".



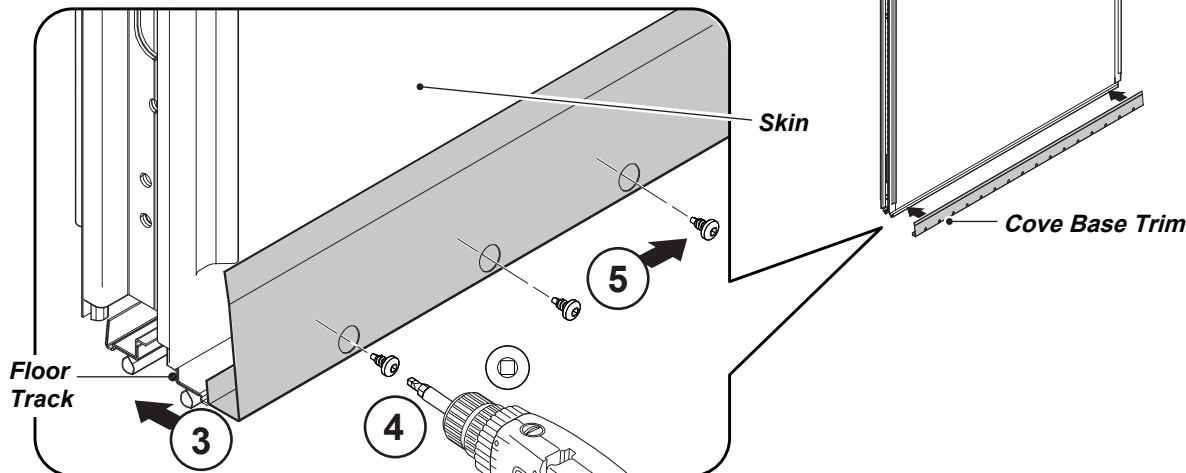
Cove Base Trim (continued)

2. Cut to length, deburr and trim as necessary.
3. Clear any floor debris away from base of wall. Place Cove Base Trim on the floor and push it firmly down and against Everwall floor track.
4. Fasten with #8 self-drilling screws through the larger openings - screw goes through the smaller hole and attaches to the floor track.
5. Keeping the trim tight to the floor, continue attaching fasteners down the length of the floor track at the ends and every other hole.
6. Product is now ready for the cove base molding to be installed. See detail top views 6a and 6b.

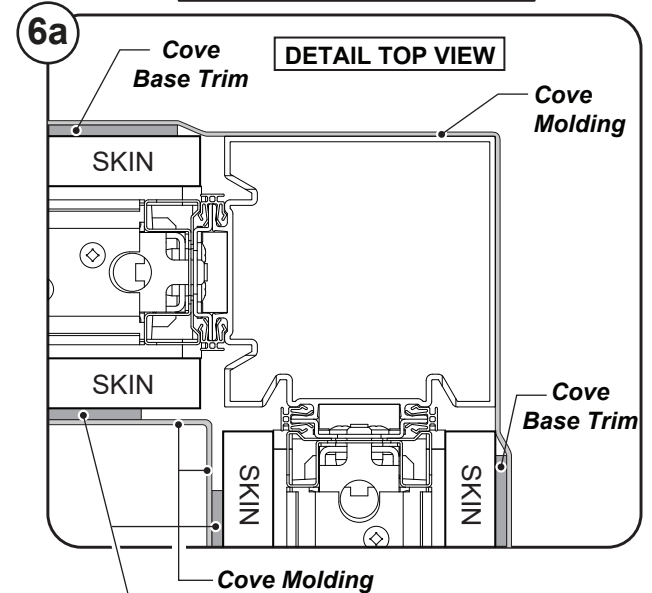
Note: Adhere cove base molding only to the base trim (and not skins) to ensure easy future reconfigurability.



2

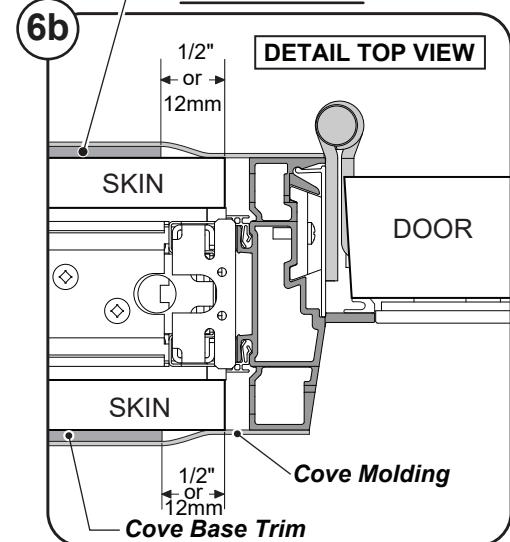


INSIDE / OUTSIDE CORNER



Cove Base Trim

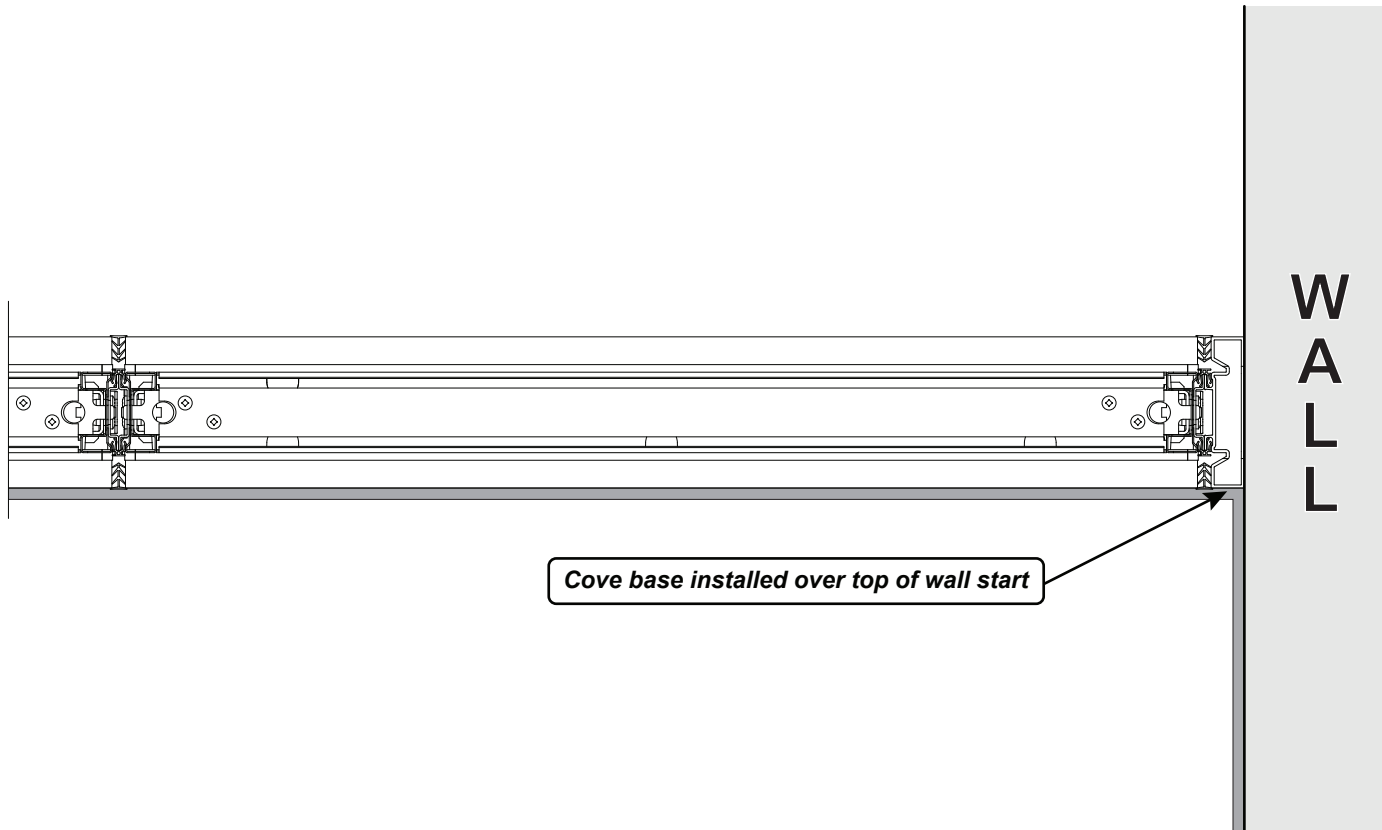
DOOR FRAME



Application of Cove Base at a building wall

Using NEWS Wall Start

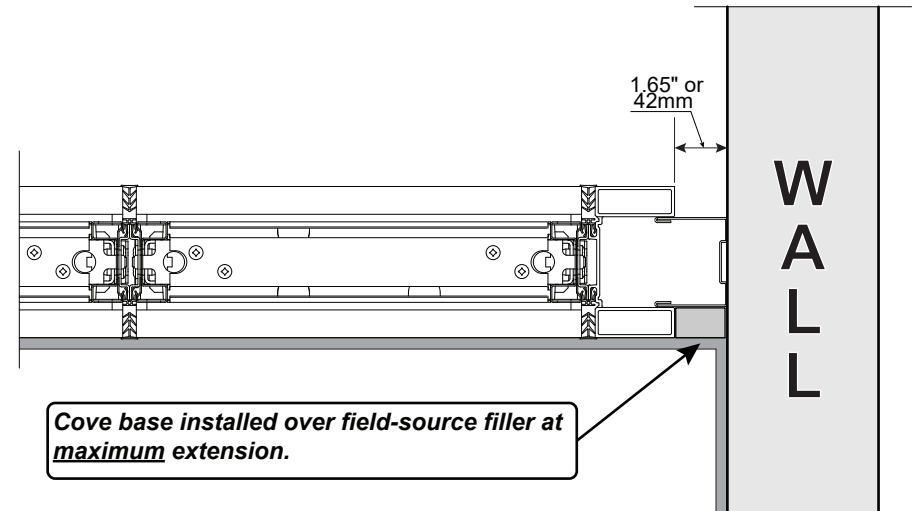
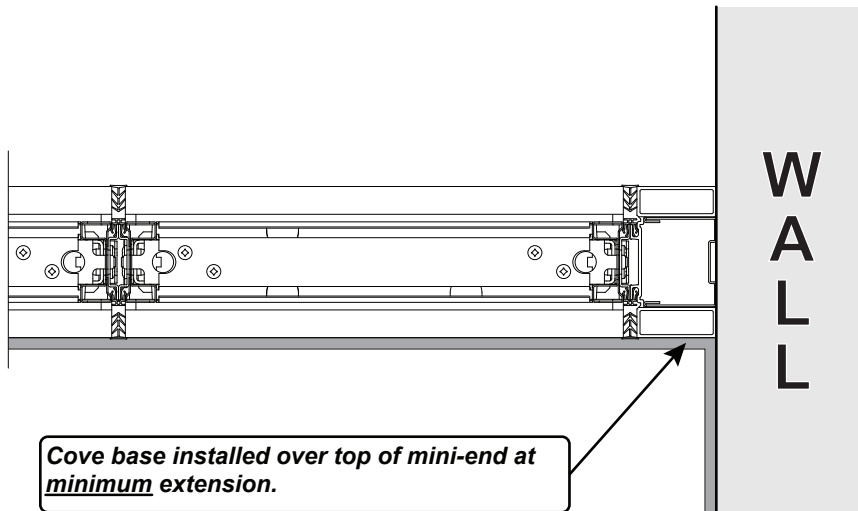
- Requires the highest degree of site accuracy and field verification.



Application of Cove Base at a building wall

Using NEEAM Medium Mini-End

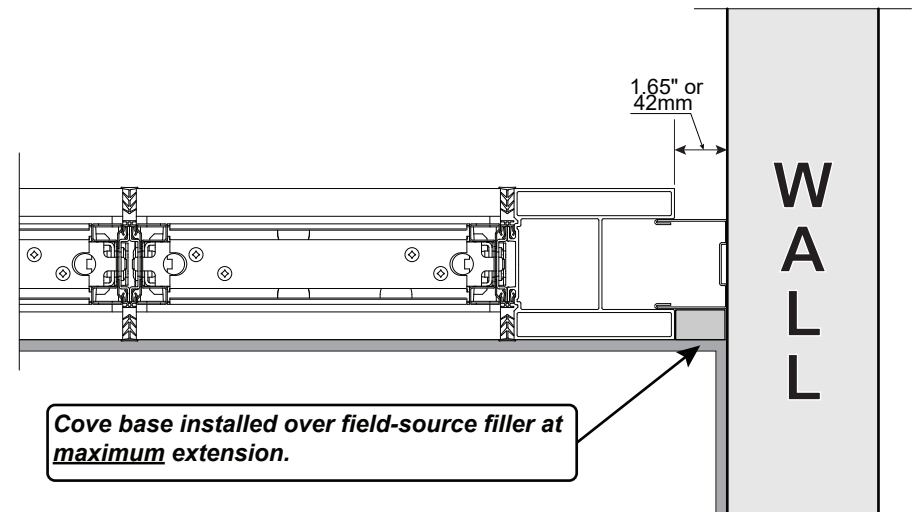
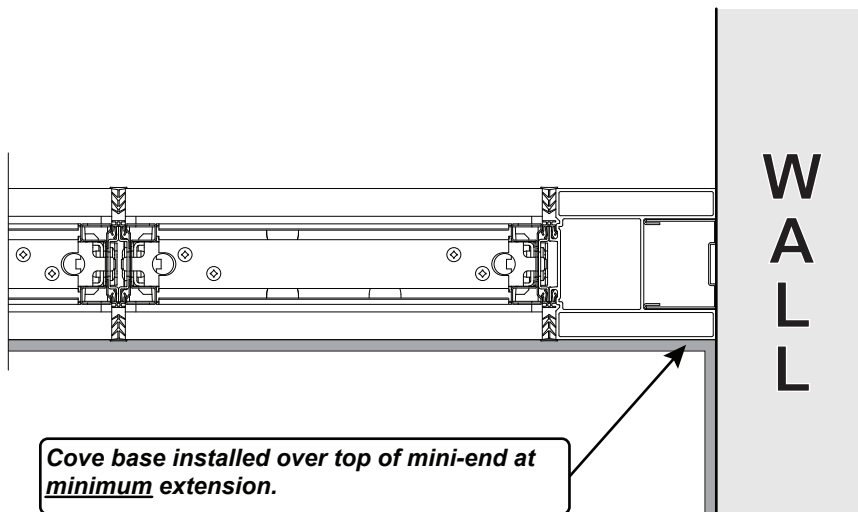
- This is the most commonly used part for attachment to building wall.



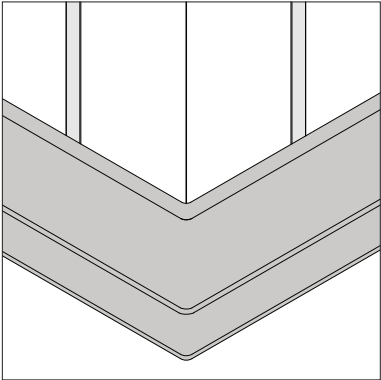
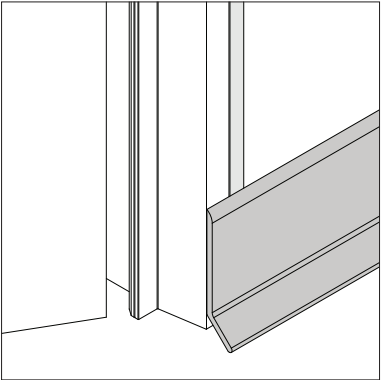
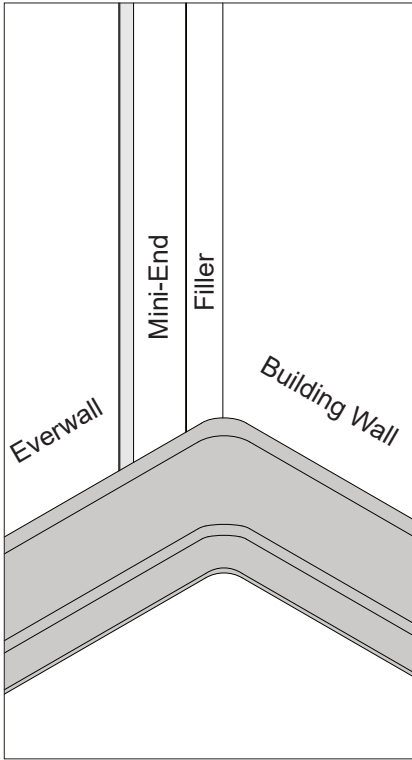
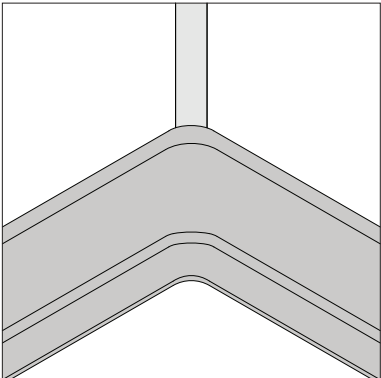
Application of Cove Base at a building wall

Using NEEAM Large Mini-End

- This is used for maximum flexibility or unforeseen deviations from original site plans.



Recommendations for Cove Base attachment and trimming

<p>Outside Corner</p> 	<p>Door Frame</p> 	<p>Mini-End (at wall)</p> 
<p>Inside Corner</p> 	<p>Finished End</p> 