

**⚠ CAUTION**



**CRUSH HAZARD!**

FAILURE TO PROPERLY SECURE PRODUCT TO BUILDING COULD RESULT IN PERSONAL INJURY.

The content in this instruction is for use when integrating Lite Scale glass and framing Glass Selections panels and/or door units. Refer to Everwall related instructions when integrating Lite Scale with those panels and/or door units.

Read the entire Assembly Directions before beginning installation.

All planning and application guidelines for Everwall and Lite Scale are based on the requirement that the ceiling track/channel is securely connected to a ceiling in order to properly support the wall components as shown. This requirement applies to all products regardless of ceiling type (acoustical suspended ceilings, soffit, bulkhead, etc.).

When installing Lite Scale, it is recommended that all attachment means include blocking above the ceiling regardless of ceiling type. An example of good practice for blocking above most ceiling types would be 3/4" FR plywood. Always consult with local code authorities to ensure blocking materials comply with code requirements (i.e. plenum rated fire protection, etc.).

For acoustical suspended ceilings, the blocking above Lite Scale doors should be the same size as the ceiling tile and should completely fill the grid in both X-Y dimensions. For areas not above doors, the blocking should at a minimum fill the grid in the direction perpendicular to the wall. See diagram on page 4.

If blocking is not used, another means for attachment to the building (for example, a brace to the upper deck) is required.

The building's designated design professional (architect or engineer) must verify that the ceiling is adequate to support the lateral loads imposed by Everwall and Lite Scale. Local codes may require independent bracing.



These assembly directions assume proper site measurements have been recorded and consideration of blocking and anchoring for building connection points has been established with General Contractor and Engineer of Building Record.

For seismic applications, the building's Engineer of Record must be consulted to determine if there are seismic requirements.

If you have a problem, question, or request, call your local dealer, or Steelcase Line 1 at **888.STEELCASE** (888.783.3522) for immediate action by people who want to help you.

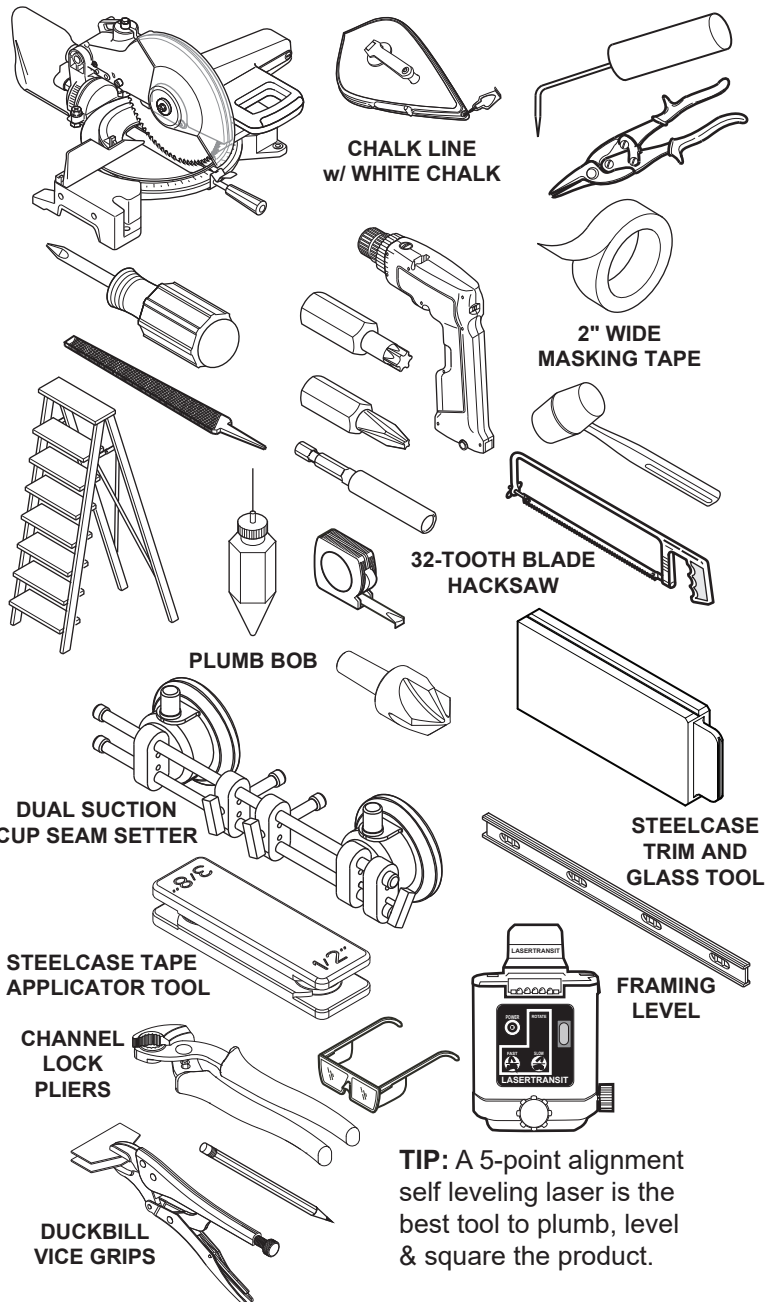
(Outside the U.S.A., Canada, Mexico, Puerto Rico, and the U.S. Virgin Islands, call: 1.616.247.2500) Or visit our website: [www.steelcase.com](http://www.steelcase.com)

© 2026 Steelcase Inc.  
Grand Rapids, MI 49501  
U.S.A.

Printed in U.S.A.



## Tools



## Table of Contents

Topic	Page
General Information:	
Layout Drawings	3-4
Building Points and Visuals	5-6
Cross Sections of LS Channels, Stops & Transitions	7
LS Everwall Doors vs Standard Everwall Doors	8
Prepping Ceiling, Floor and Wall Channels for Install (Floor and Ceiling Tracks)	9
Prepping Ceiling, Floor and Wall Channels for Install (Vertical Channels)	10
Prepping Ceiling, Floor and Wall Channels for Install (Variable Angle Vertical Channels)	11
Everwall Ceiling Track	12
Door Install	13
Vertical Channel Length (Cutting)	14
Vertical Channel Length (Installing)	15-18
Vertical Transition (Cutting & Installing)	19
Ceiling & Floor Tracks (Cutting & Installing)	20-22
Ceiling Track - Mitered Corner Prep	23
Ceiling Track Glass-T Preparation	24
Ceiling Track - Finished End Cap	25
Floor Track - Mitered Corner Prep	26
Floor Track Glass-T Preparation	27
Floor Track - Finished End Cap	28
Installing Sound & Light Seal for Tegular Ceiling Applications	29
Trimming around Sills, Soffits & Bulkheads	30
Vertical Channel & Glass Stop miter condition with Floor or Ceiling Channel	31
Measuring & Calculating Glass size for Sills, Soffits & Bulkheads	32
Prepping Glass for Installation	33
Installing Glass	34-36

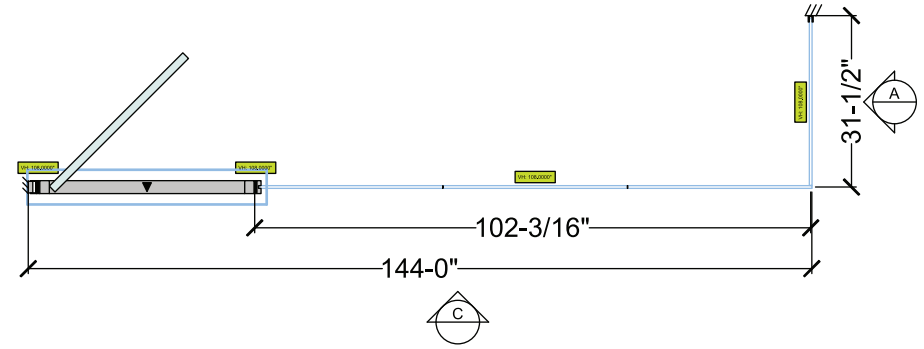
## Lite Scale (LS) - Everwall General Information - Layout Drawings

Layout drawings provide dimensions and details to help installers determine intended location of product. Tags and/or installation reference Identification Label (Ref ID) will indicate location of product in the plan and elevation views.

Ceiling track locations are taken from the centerline dimensions on the plan view.

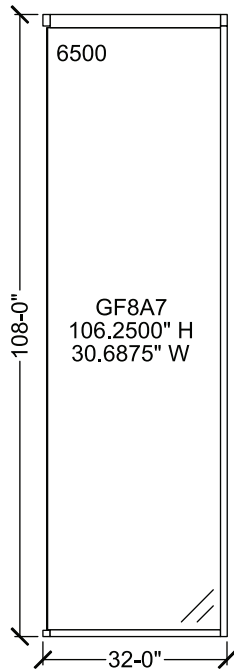
Locations of vertical components are found on the plan views.

Locations of horizontal components are found on the elevation views.

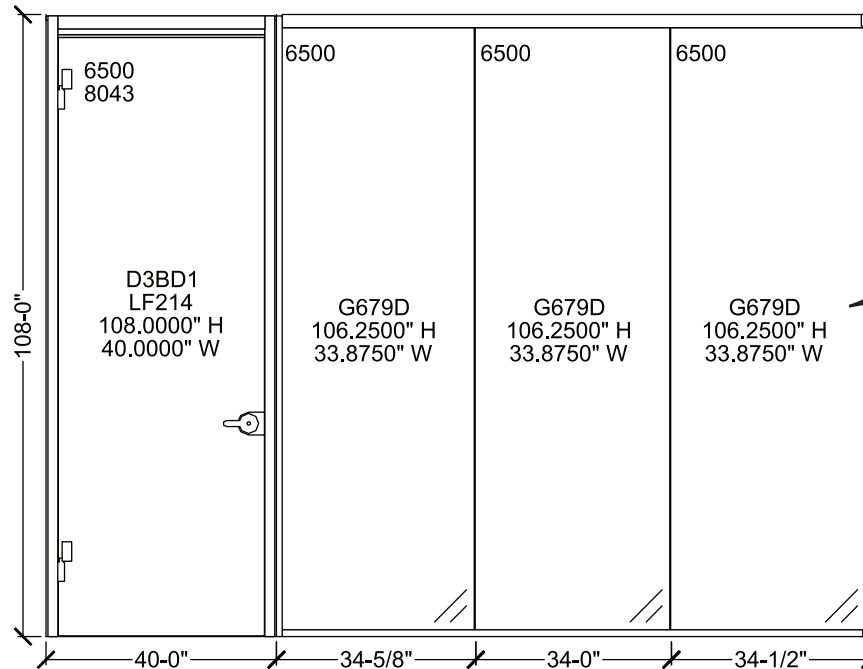


**Plan View**

### Automatic Elevations



**Elevation A**



**Elevation C**

**Ref ID/TAG  
SIZE AND  
LOCATION  
LABEL**

## Lite Scale (LS) - Everwall General Information - Layout Drawings (Continued)

LS interfaces with Everwall product. Complete installation of all Everwall product prior to installing LS. Refer to specific Everwall product Assembly Directions.

Transition conditions related to Everwall and LS ceiling components are unique and require prep for a proper fit.

Use the centerline dimensions from the layout drawing plan view to determine location of ceiling track centerlines. Several methods can be used to mark lines on the ceiling, including laser transit, pencil marks on tape, chalk lines.

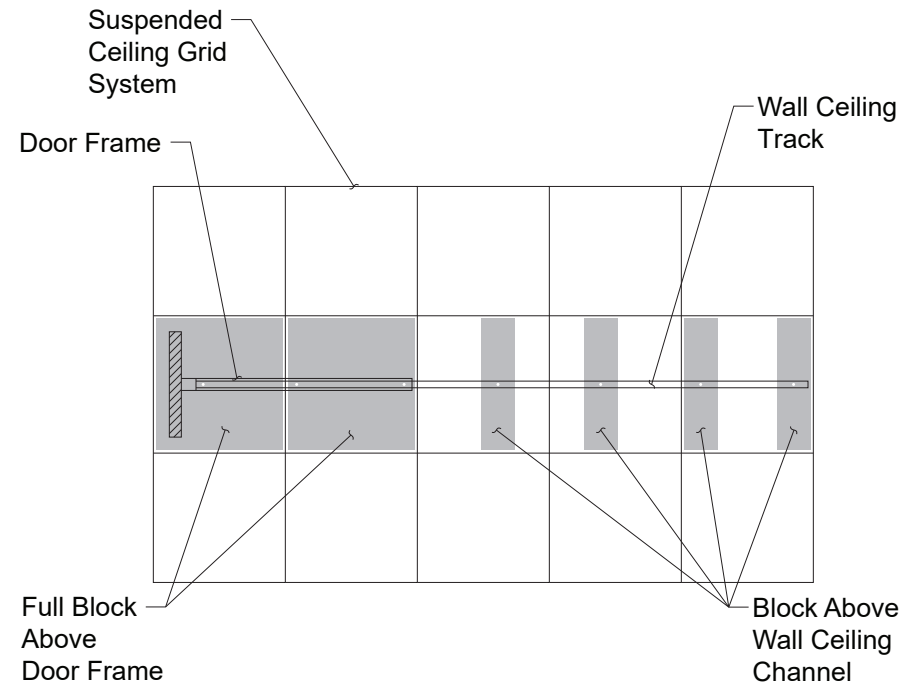
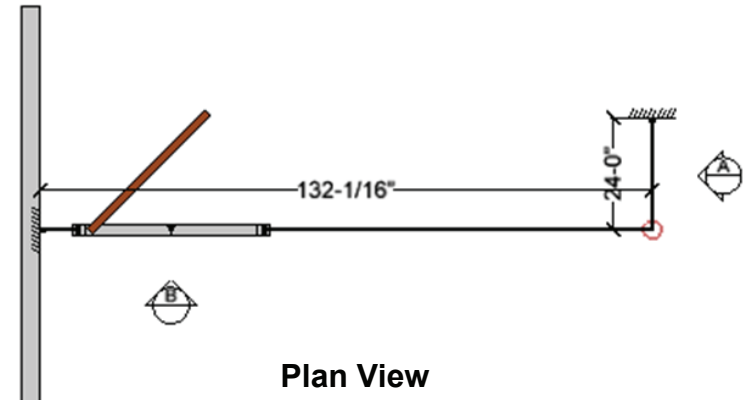
Transfer the ceiling centerline to the floor by means of laser or plumb bob. Make sure that the tape or lines are not visible after install is complete.

For the best results use a 5-point alignment self leveling laser to transfer lines, plumb, level and square to within 1/16 of an inch.

LS Everwall doors are 9/16" taller than Standard Everwall doors and are installed under Everwall ceiling track.

Carefully review layout and product to determine sequence of installation. Orientation of doors, positions of stops and other considerations should be understood prior to starting installation.

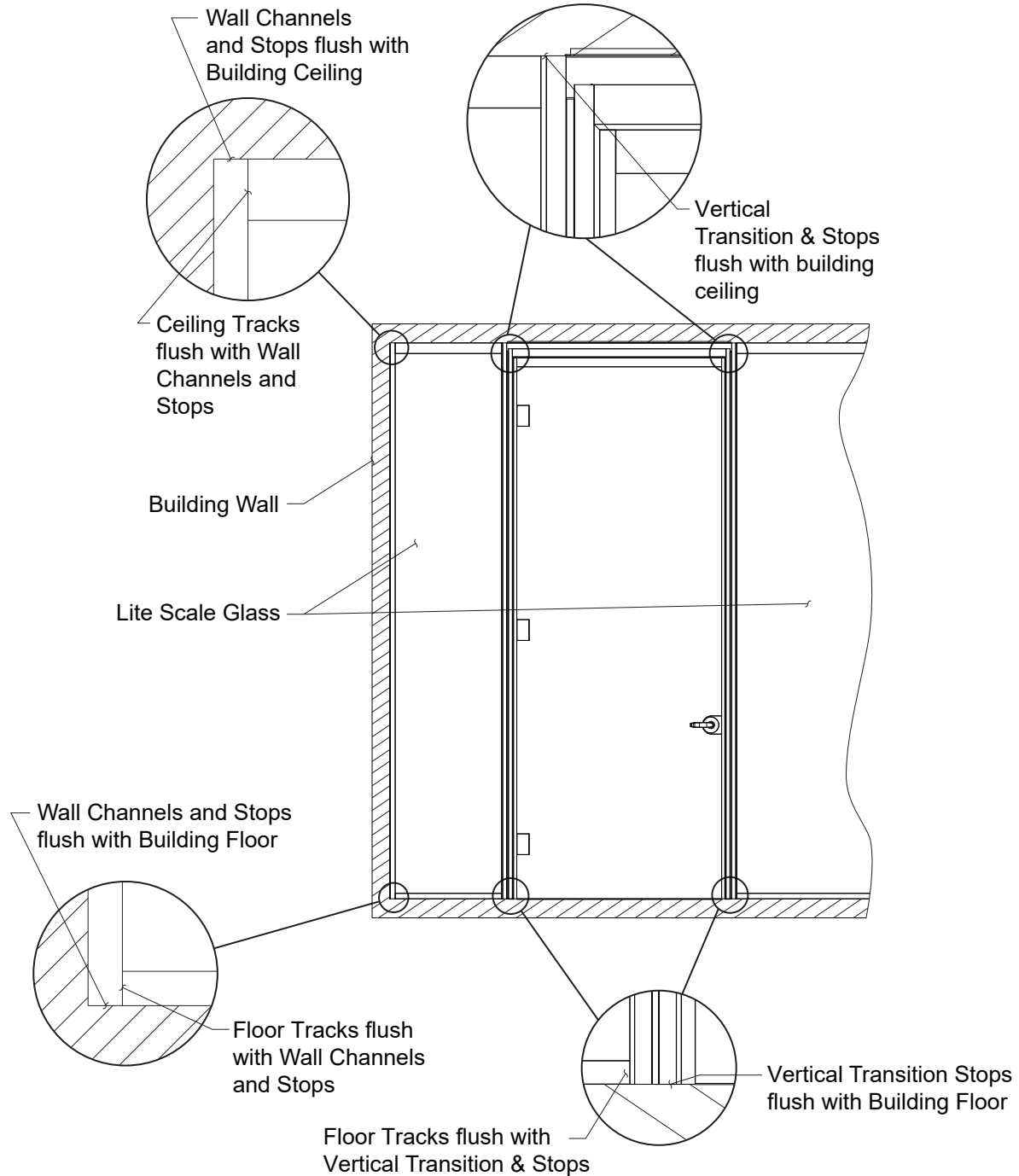
Prior to use, keep all glazing tapes clean and stored away from debris such as dust and metal shavings which can become embedded in the tape and affect its function and appearance.



## Lite Scale (LS) - Everwall General Information - Building Points and Visuals

General rules of thumb when planning LS components adjacent to building features and transition conditions.

See page 7 for cross sections of LS Channel and Stop components.



## Lite Scale (LS) - Everwall General Information - Building Points and Visuals (Continued)

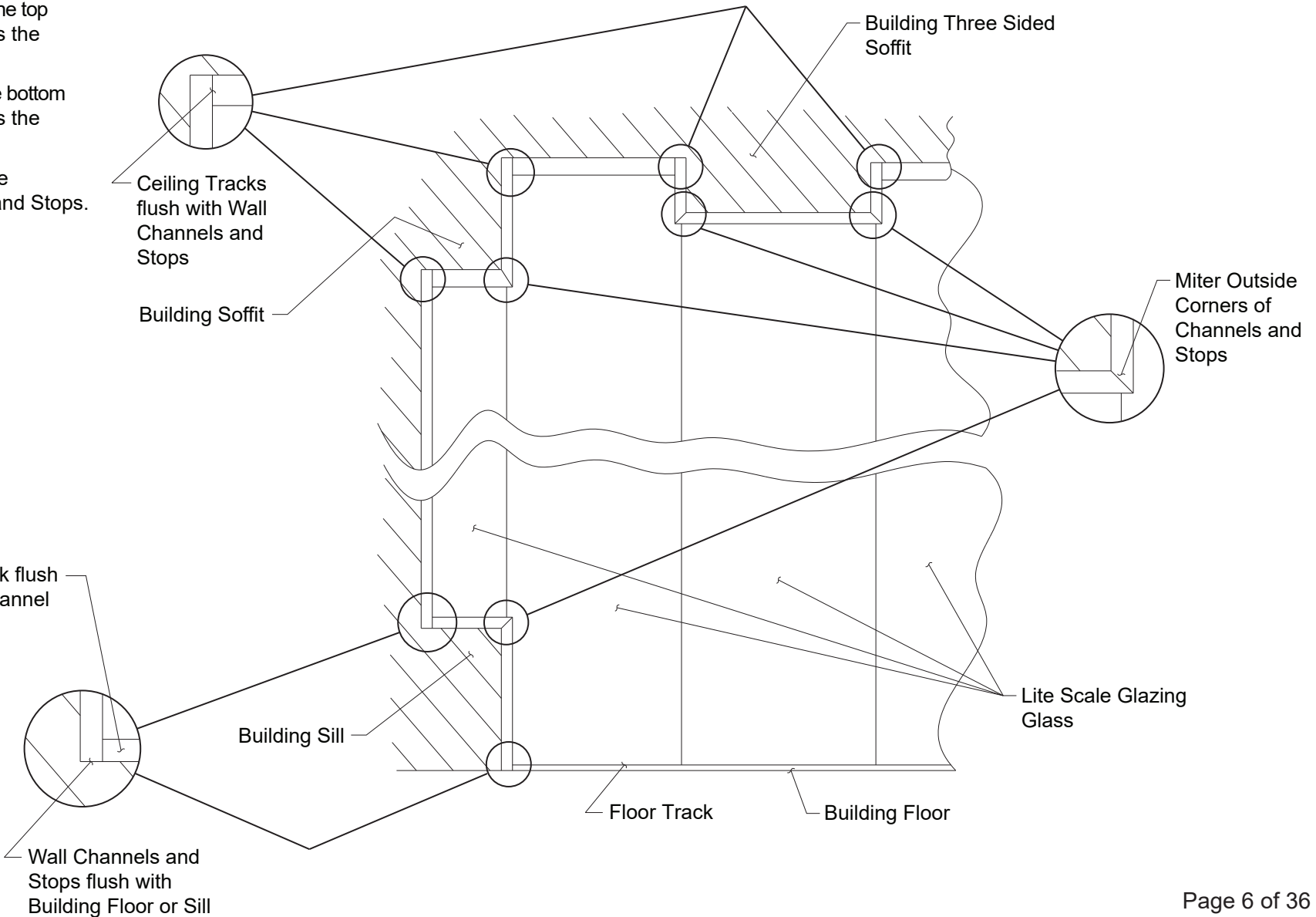
Sill and Soffit Details.

Ceiling track where the top of a glass lite meets the building.

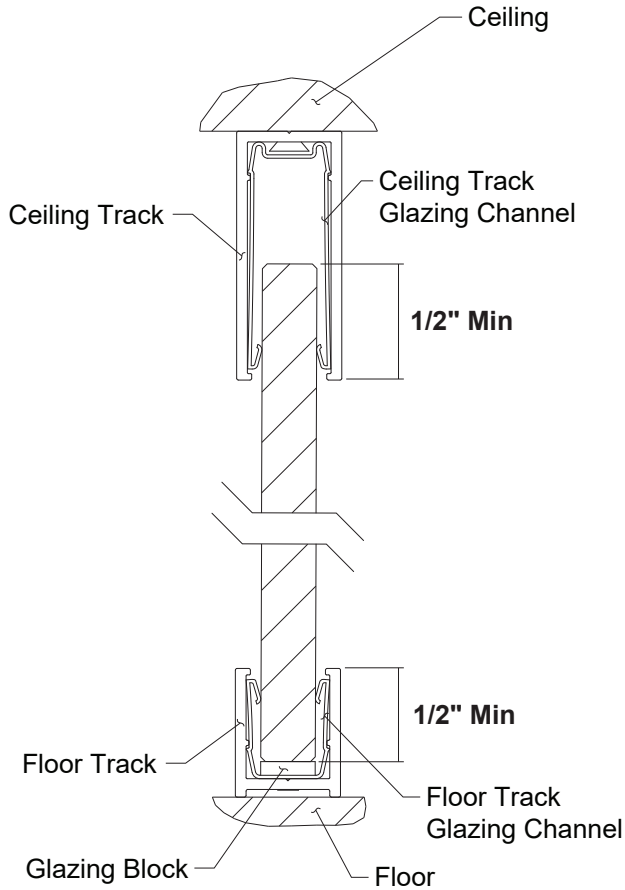
Floor track where the bottom of a glass lite meets the building.

All other elements are Vertical Channels and Stops.

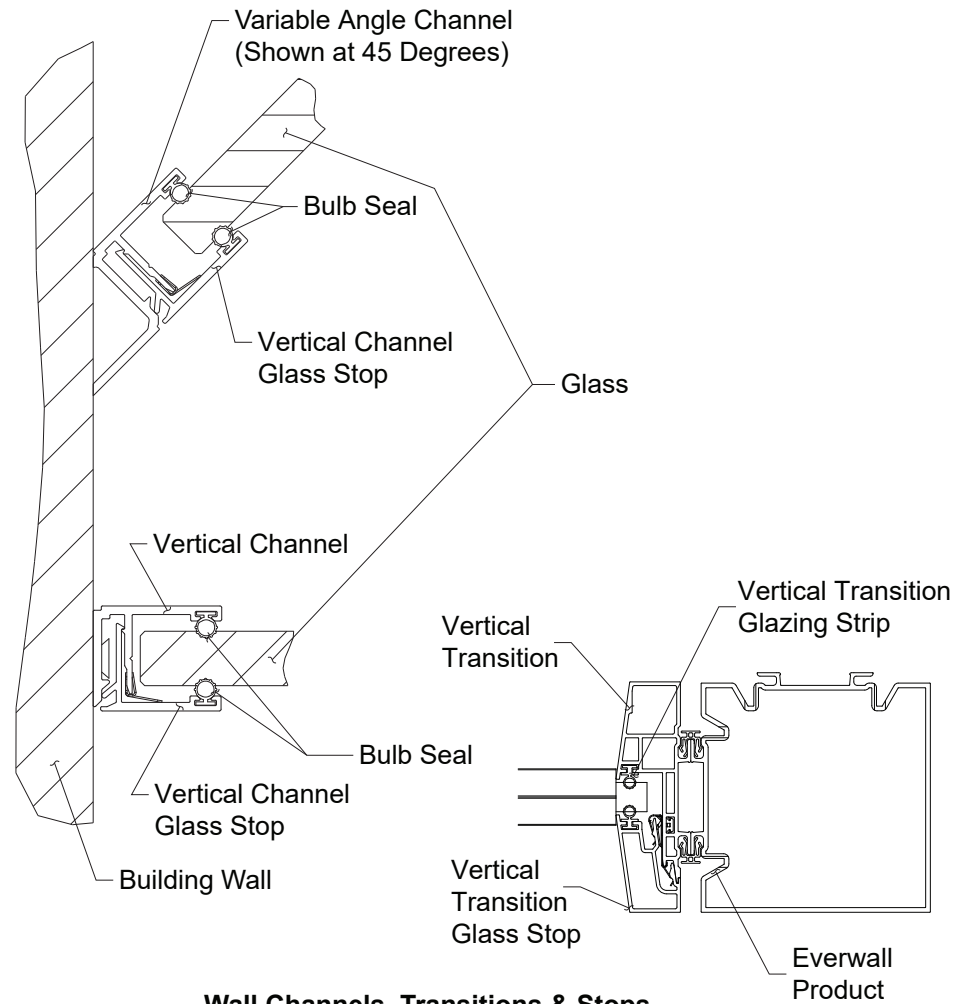
Floor Track flush to Wall Channel and Stop



**Lite Scale (LS) - Everwall  
General Information - Cross Sections of LS Channels, Stops & Transitions**



**Floor, Ceiling, Channels & Stops**



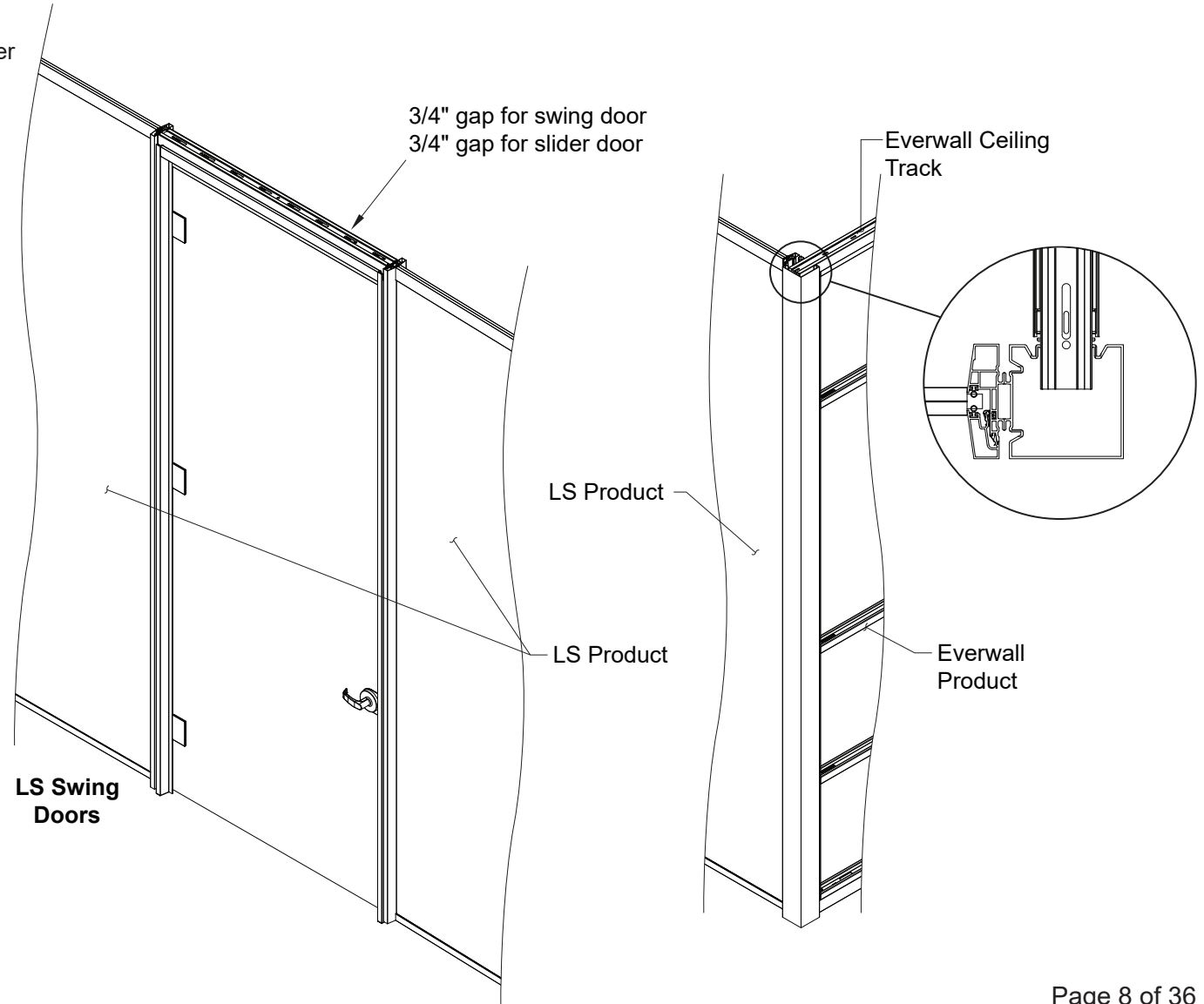
**Wall Channels, Transitions & Stops**

## Lite Scale (LS) - Everwall General Information - LS Doors & Posts

**1.** LS Swing Doors are designed to be 1/2" taller than Standard Everwall Doors and will have an 3/4" gap between the header and ceiling when installed.

**2.** LS Slider Doors are designed to be 1/2" taller than Standard Everwall Doors and will have an 3/4" gap between the header and ceiling when installed.

**3.** All LS Doors are installed under a piece of Everwall Ceiling Track.



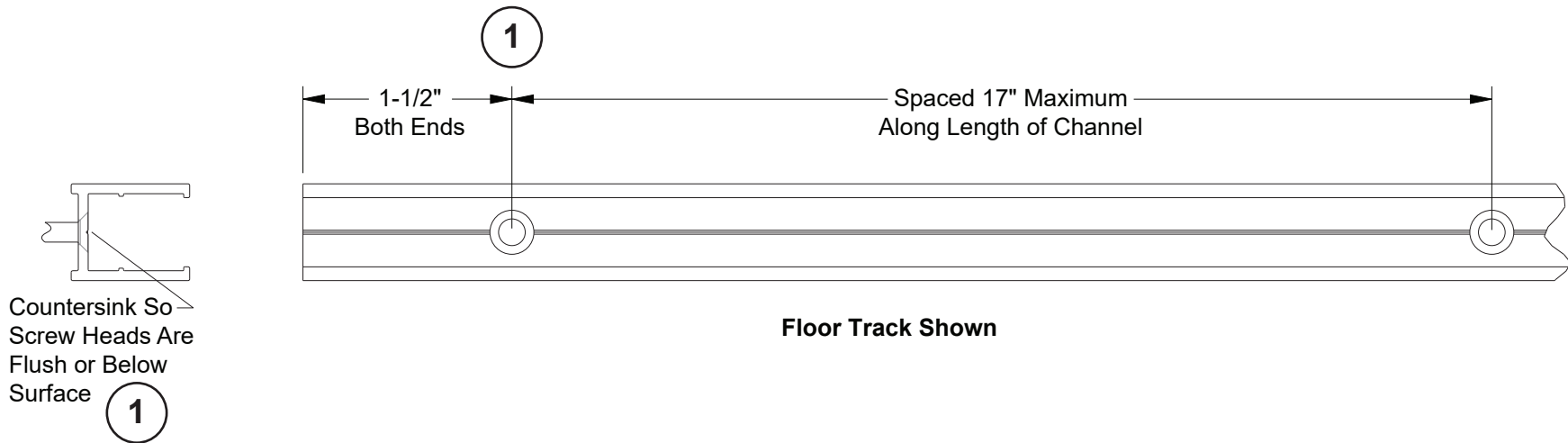
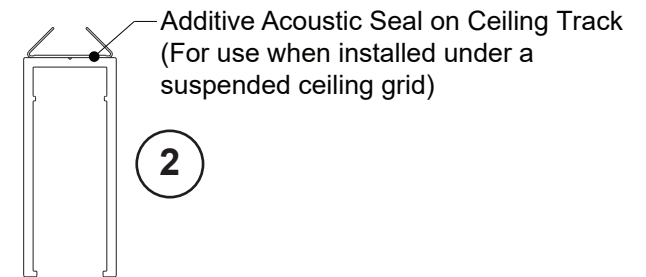
General Preparation for Floor and Ceiling Tracks:

**1.** Drill and countersink for mounting screws, spaced as shown.  
Steelcase recommends using flat head screws with a minimum thread size of #10.

**CAUTION:** Screw heads should not protrude above mounting surface.  
Contact with glass while installing could result in glass breakage.

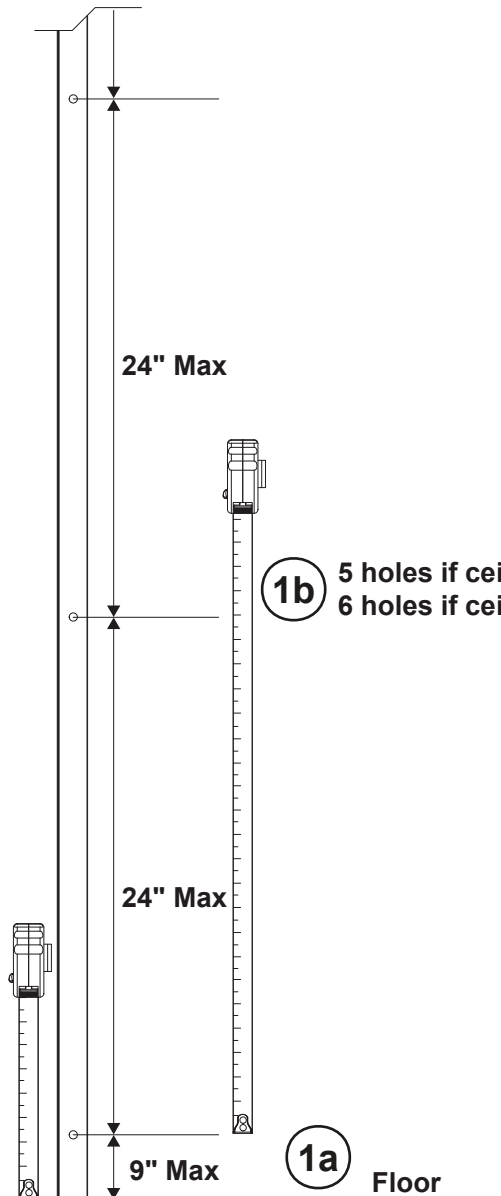
**NOTE:** Countersinks are not necessary on ceiling track.

**2.** For ceiling tracks only - If the additive acoustical seal is required apply it as shown.

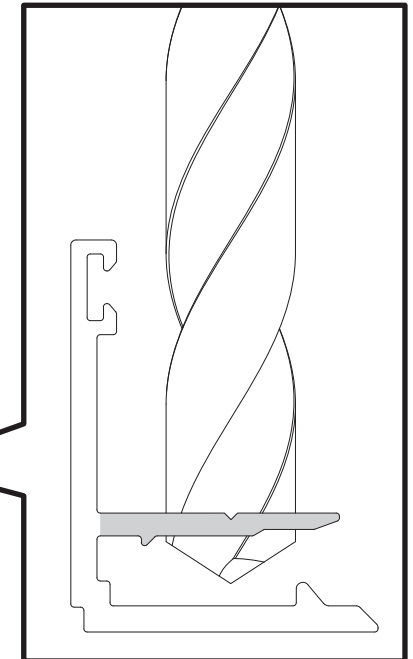
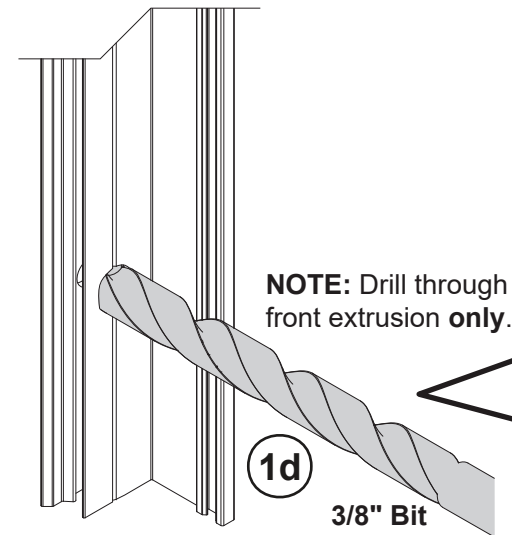
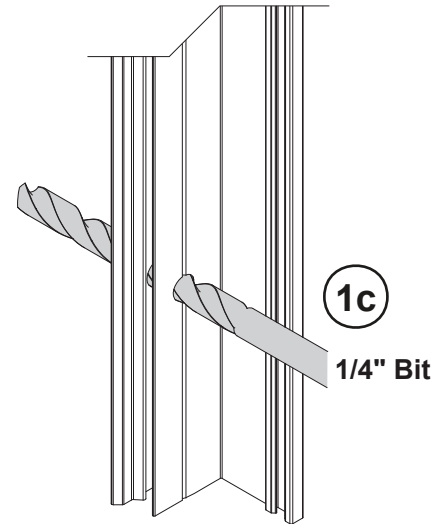


General Preparation for Vertical Channels:

**1.** Drill for mounting screws as shown.

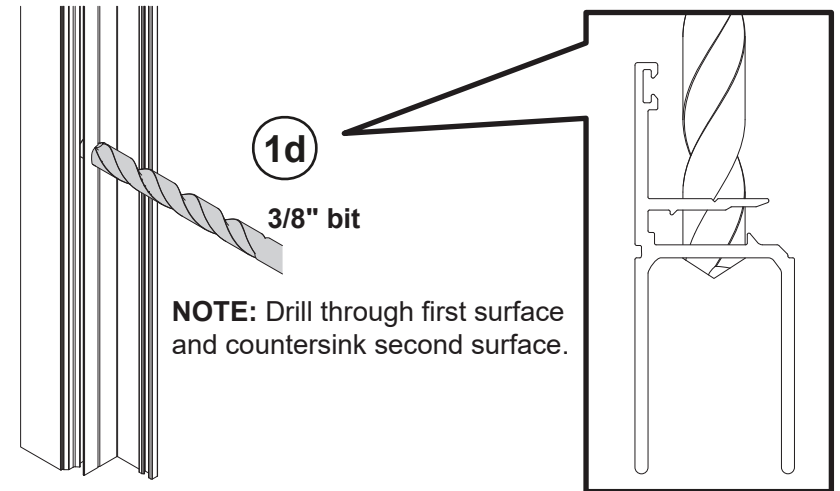
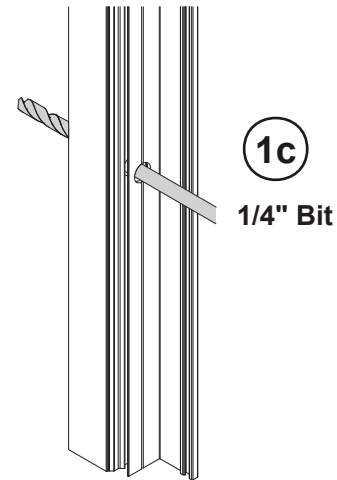
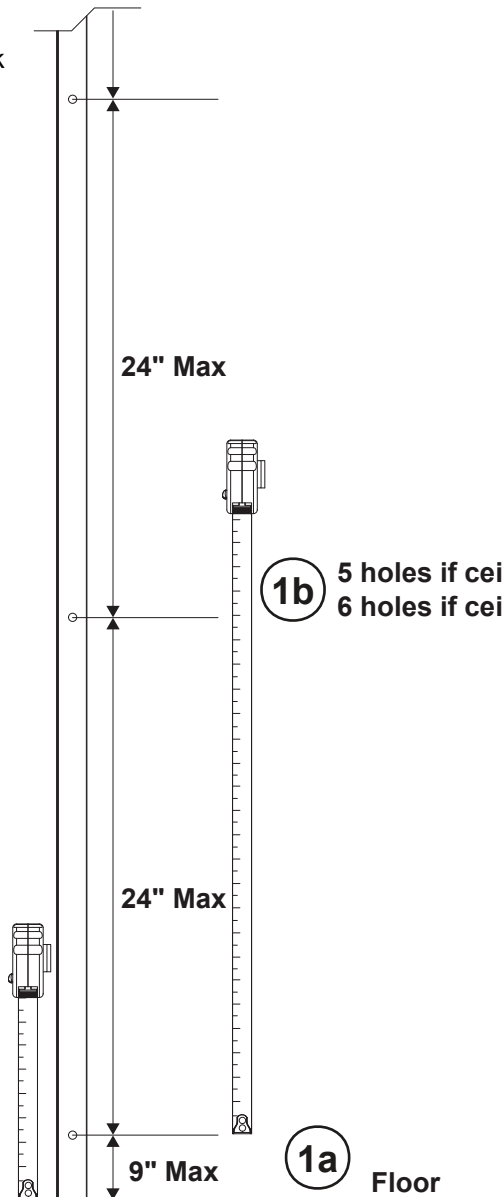


**1b** 5 holes if ceiling height < 108"  
6 holes if ceiling height => 108"



General Preparation for Variable Angle Vertical Channels:

**1.** Drill and countersink for mounting screws as shown.



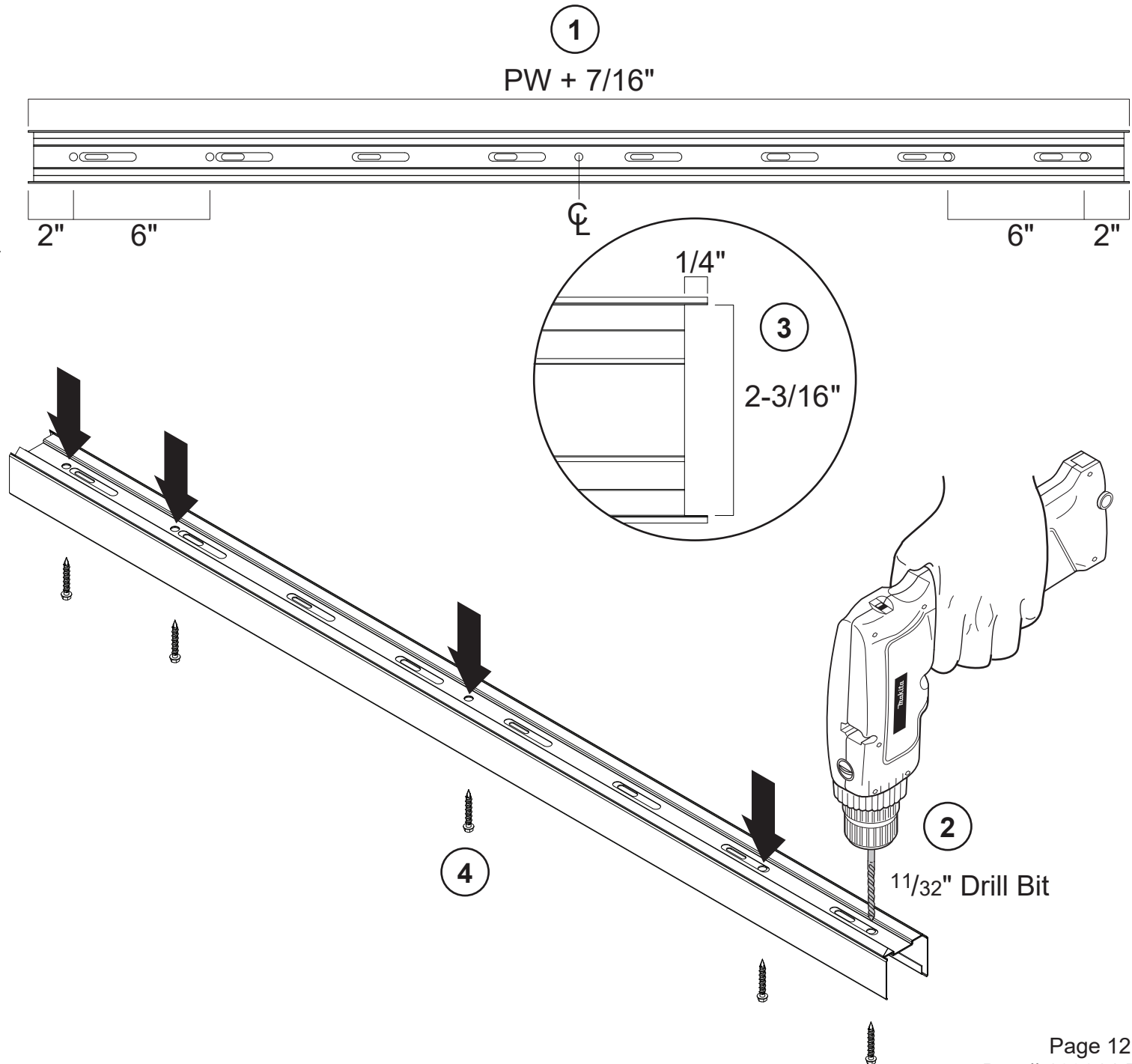
## Everwall Ceiling Track

1. Cut to length.

2. Drill mounting holes.

3. Notch both ends to clear geometry on back side of vertical transition.

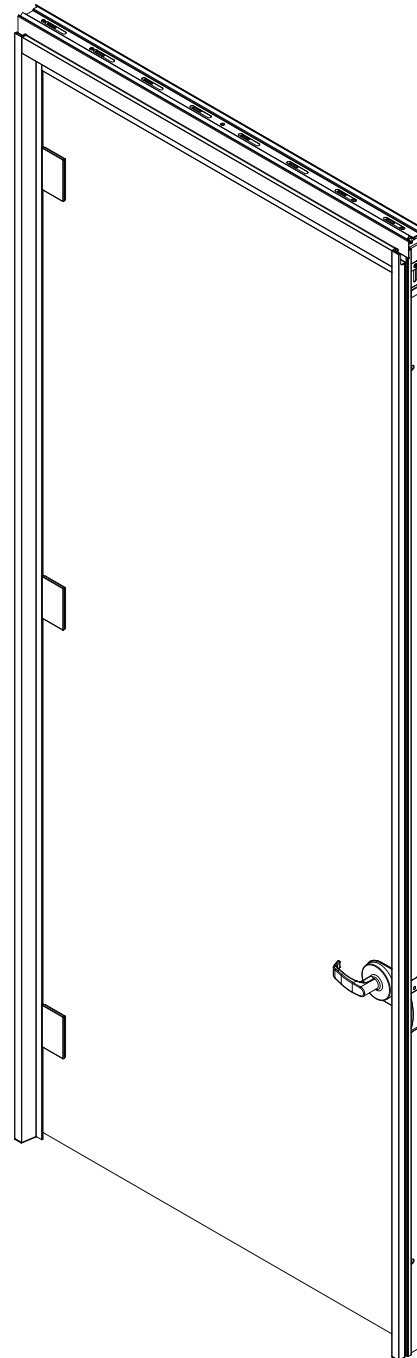
4. Mount to ceiling with (5) 5/16" lag bolts.



## Everwall Door Install

1. Install door per assembly directions  
Doc # 163041 (Slider Door) and Doc # 160641 (Swing Door).

**NOTE:** For slider doors, install door frame only at this time.



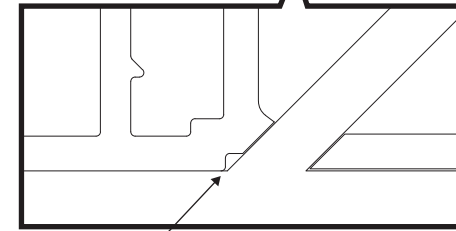
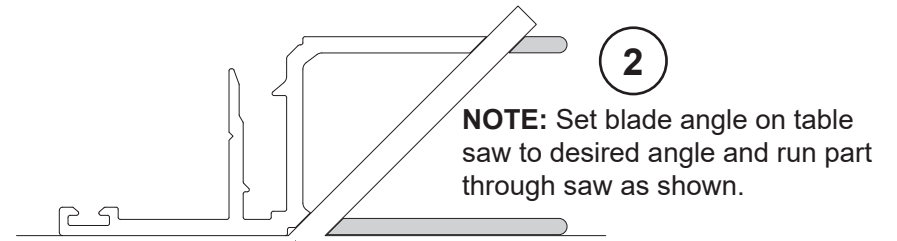
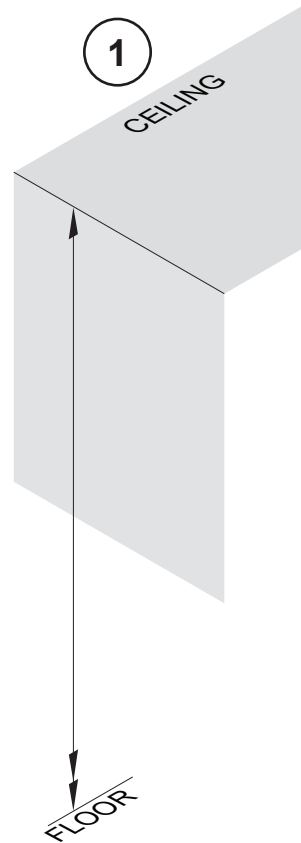
## Vertical Channel Length Cut and Install Cutting: How to measure needed length.

**1.** Vertical Channel, Glass Stops & Glazing Strips length is measured from the floor to the ceiling.

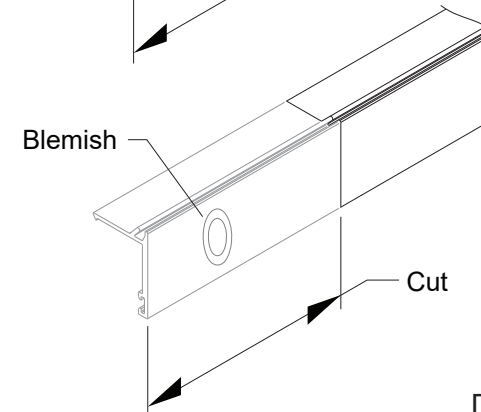
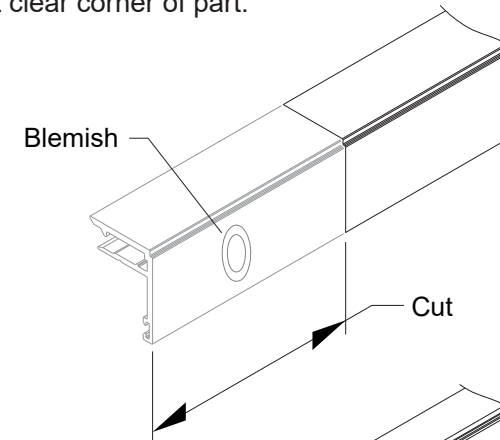
**2.** For Variable Angle Vertical Channels an additional full length cut is necessary to allow the channel to mount to building at the correct angle. Cut with table saw as shown.

**NOTE: ANODIZED EXTRUSIONS MAY HAVE A VISIBLE BLEMISH NEAR ONE END. WHEN CUTTING THE PART TO LENGTH, CUT OFF AND DISCARD THE BLEMISH.**

**NOTE: AFTER CUTTING TO LENGTH, ENSURE THERE'S AN ATTACHMENT SCREW HOLE WITHIN 9" OF EACH END. DRILL ANOTHER ATTACHMENT HOLE AS NEEDED.**



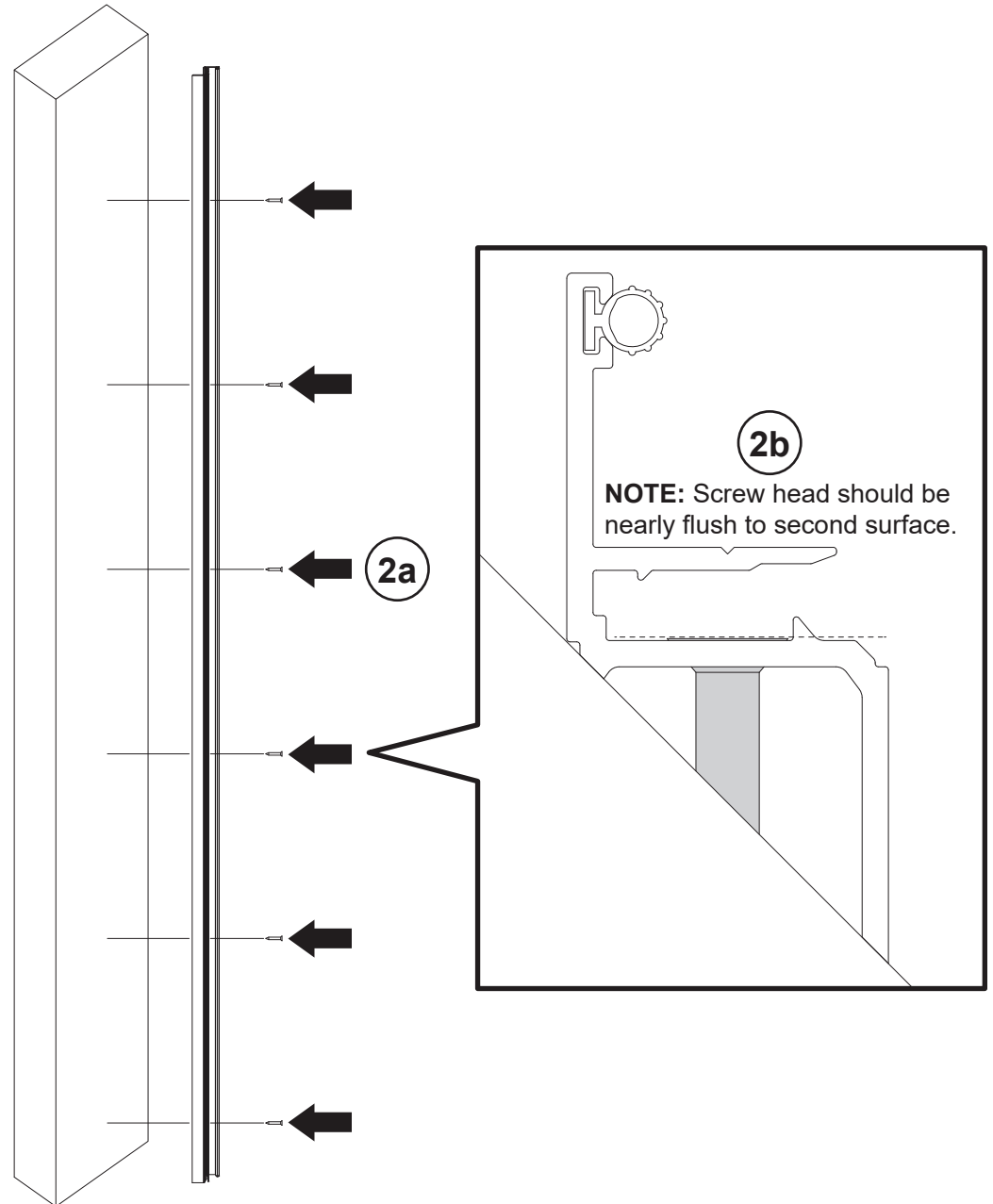
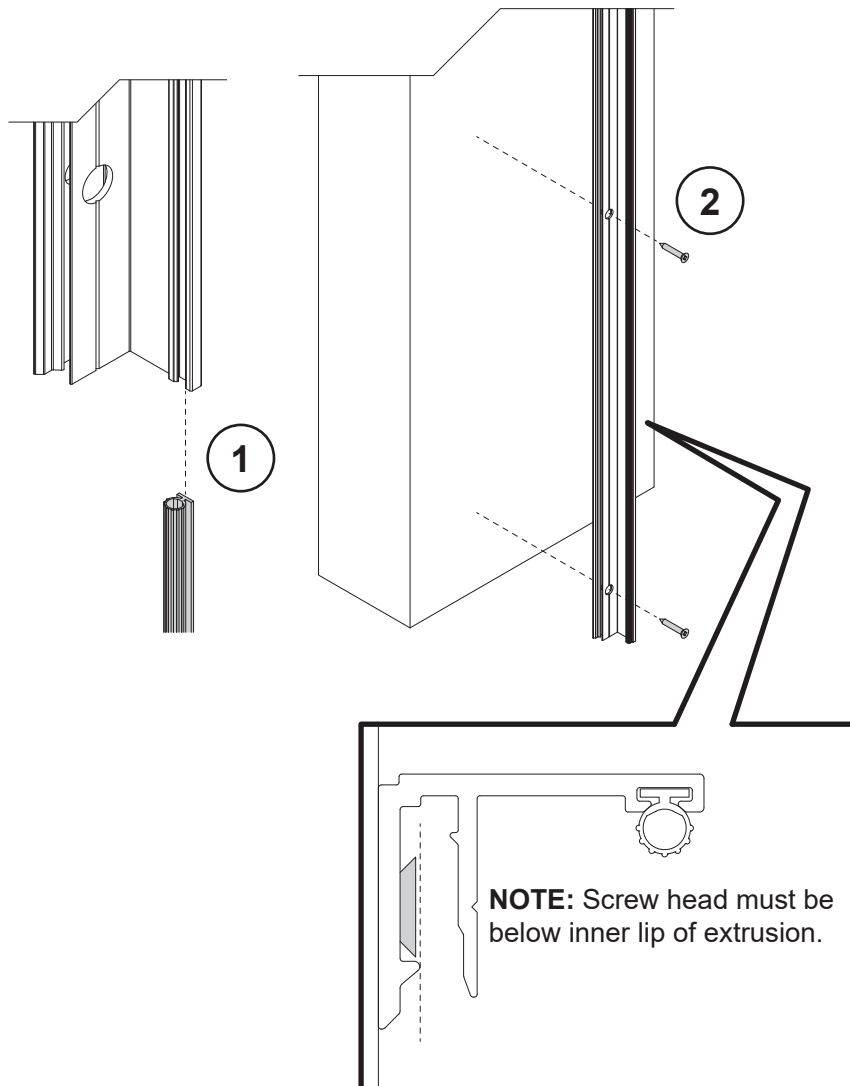
**NOTE: Saw blade should just clear corner of part.**



## Vertical Channel Length Cut and Install

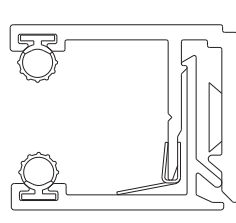
Installing:

1. Insert Glazing Strip into Vertical Channel.
2. Screw Vertical Channel to wall.

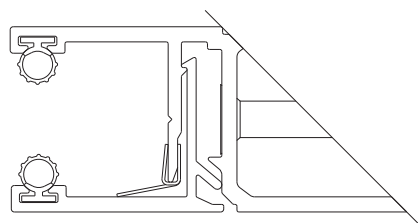


**NOTE: Glass needs to be installed prior to installing safety springs.**

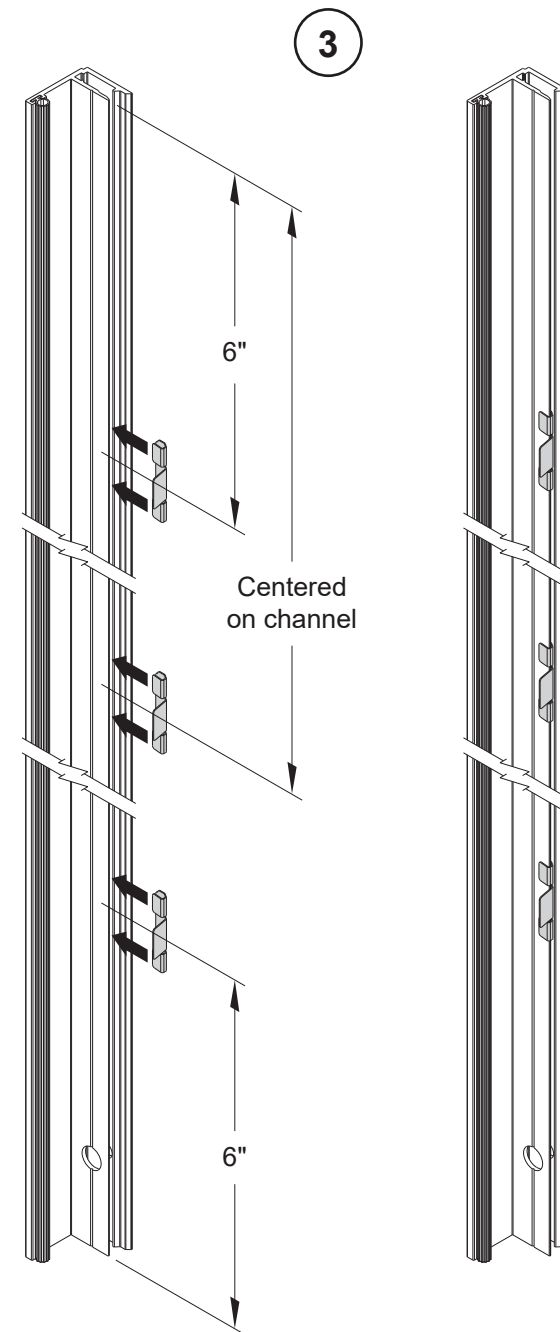
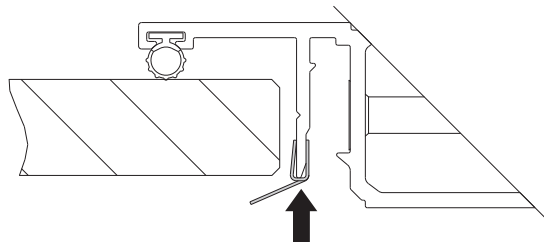
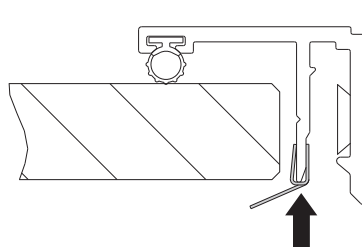
**3.** Install (3) safety springs, evenly spaced on Vertical Channel.



Vertical Channel



Variable Angle Channel  
(Shown at 45 Degrees)

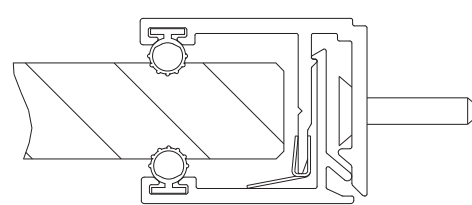


## Vertical Channel Length Cut and Install

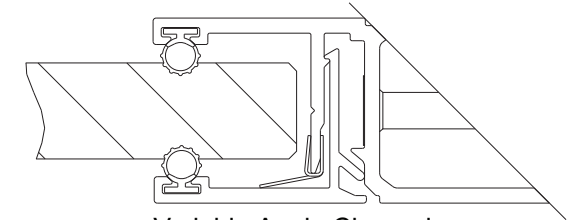
### Installing:

4. Insert Glazing Strip into Vertical Channel Glass Stop.
5. Snap Vertical Channel Glass Stop into Vertical Channel.

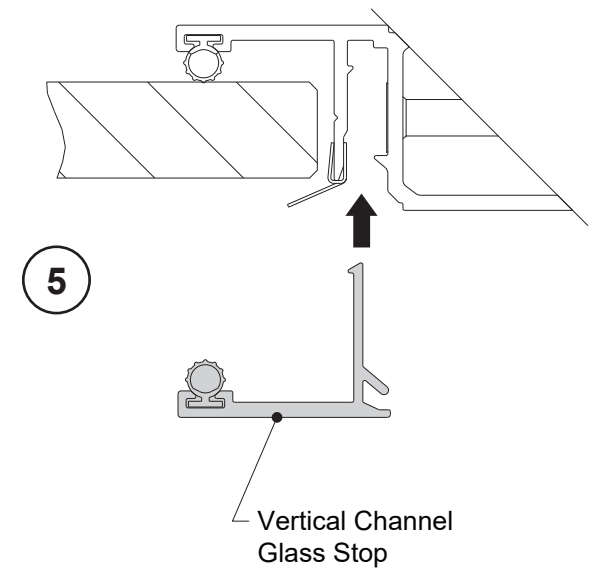
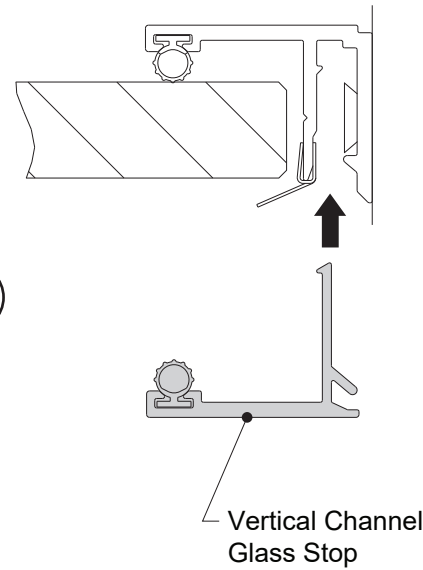
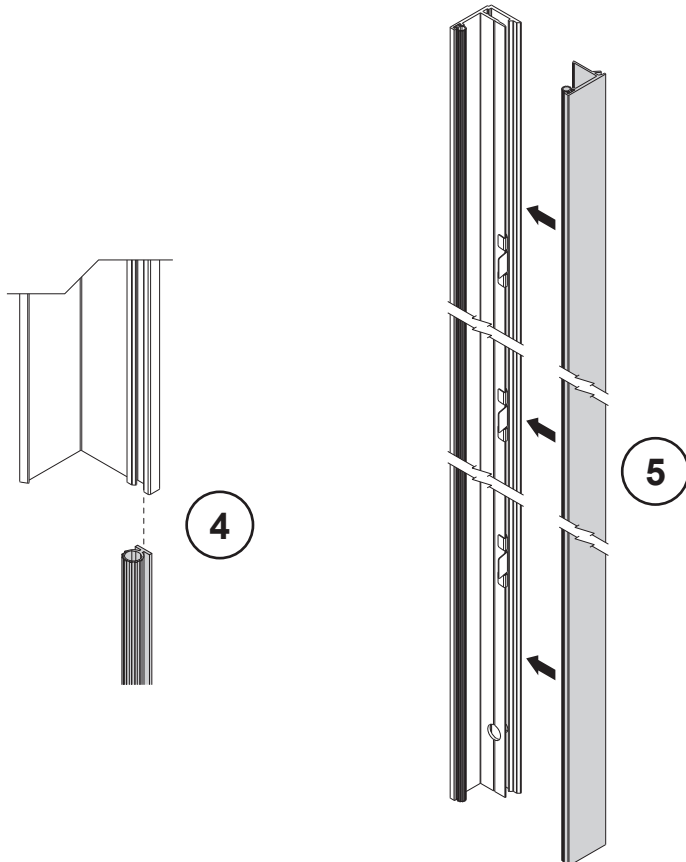
**NOTE: Start at bottom of glass stop and push a portion into Vertical Channel. Maintain pressure on portion you just pushed in and move up to push more in. HITTING GLASS STOP WITH A HAMMER OR Mallet WILL NOT SEAT THE GLASS STOP!**

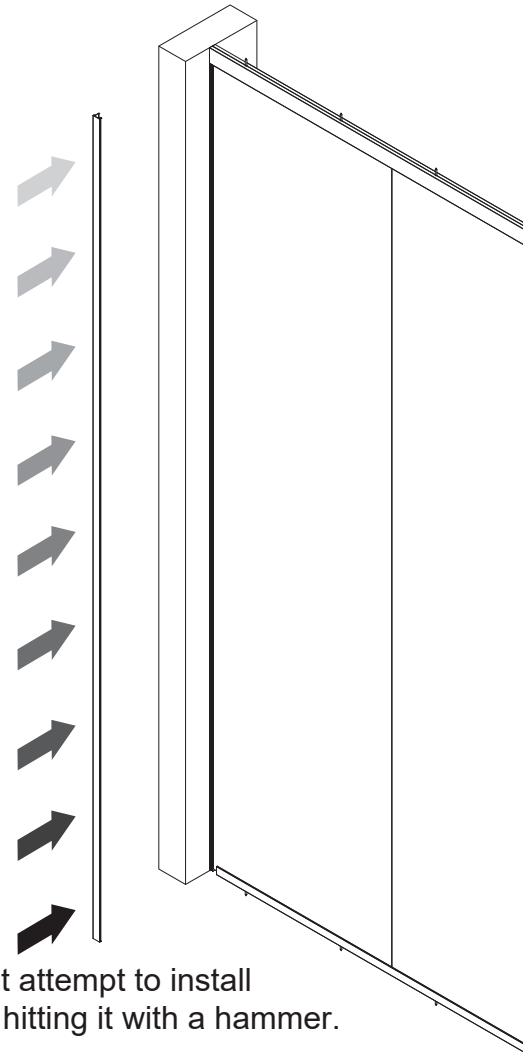
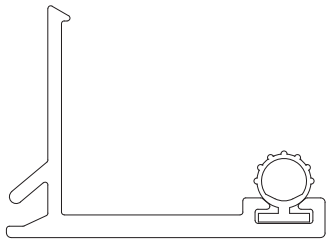
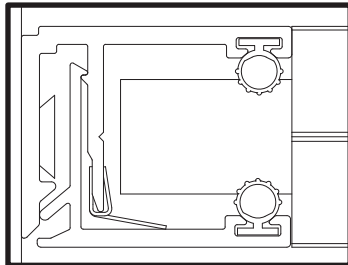
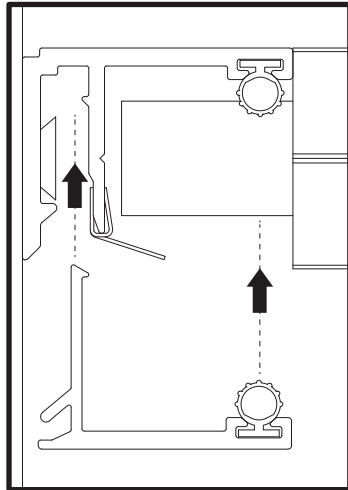
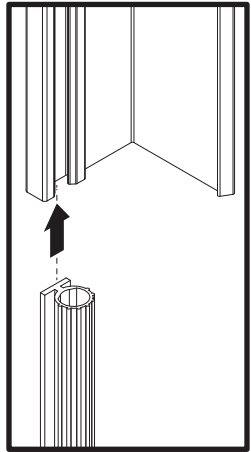


Vertical Channel



Variable Angle Channel  
(Shown at 45 Degrees)





**NOTE:** Do not attempt to install glass stop by hitting it with a hammer.

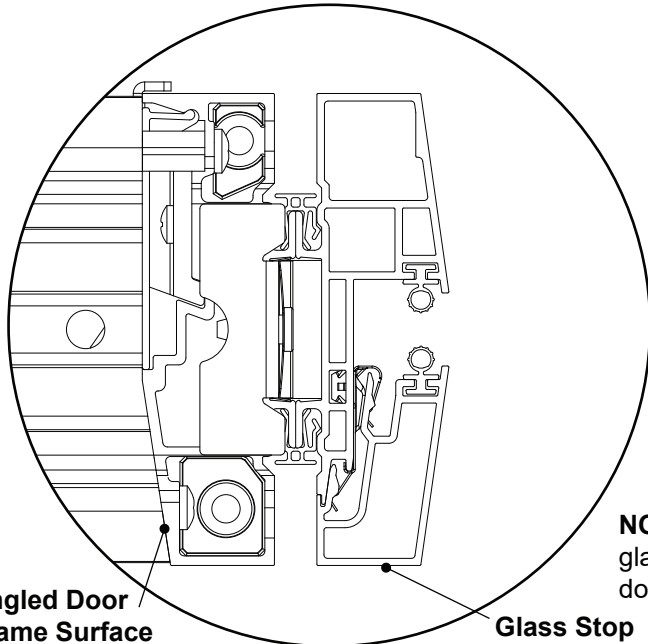
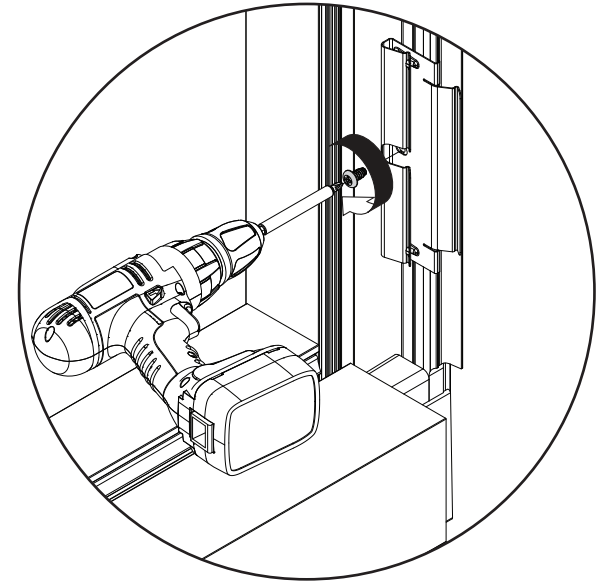
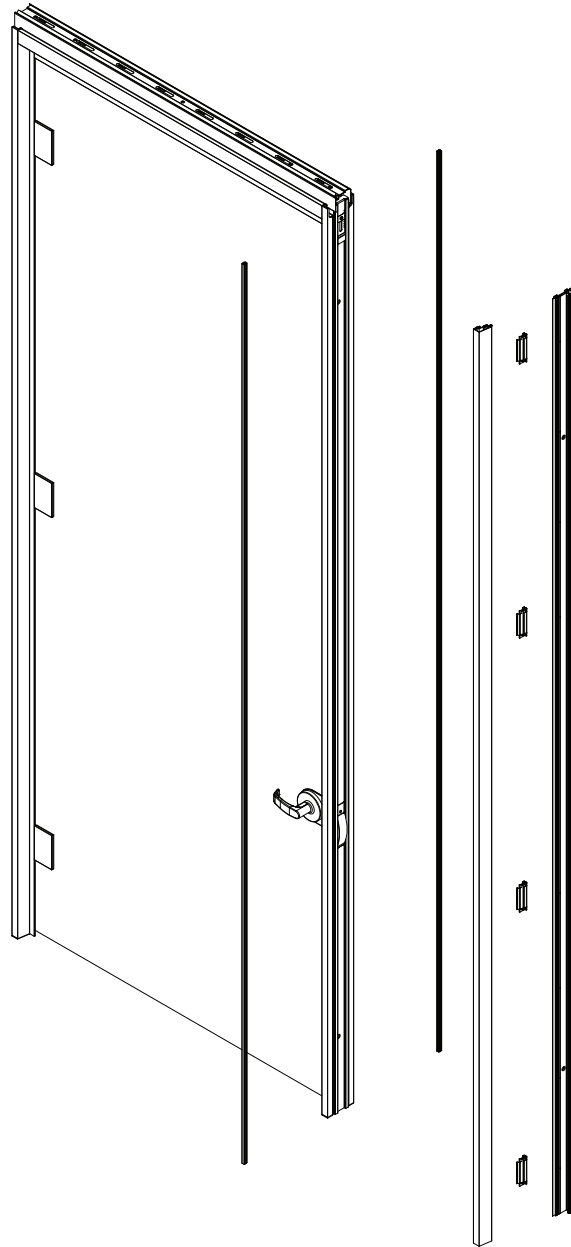
**Start at floor and push glass stop into vertical transition. Hold the first ~10" in and move up the part 10"-12" at a time. Continue holding the glass stop as you move up the part.**

## Everwall LS Vertical Transition Install

1. Cut Vertical Transition and Glass Stop to ceiling height measurement at install location.
2. Install Vertical Transition to Door Frame.
3. Install Frame Couplers
4. Install (8) retention springs in each available mounting location.
5. Install Glass Stop

**NOTE:** Retention springs and glass stop will be installed after LS glass has been installed, leveled, and glazed.

**NOTE:** LS vertical transition install sequence and steps are the same when mounting to Everwall posts or panel assemblies.

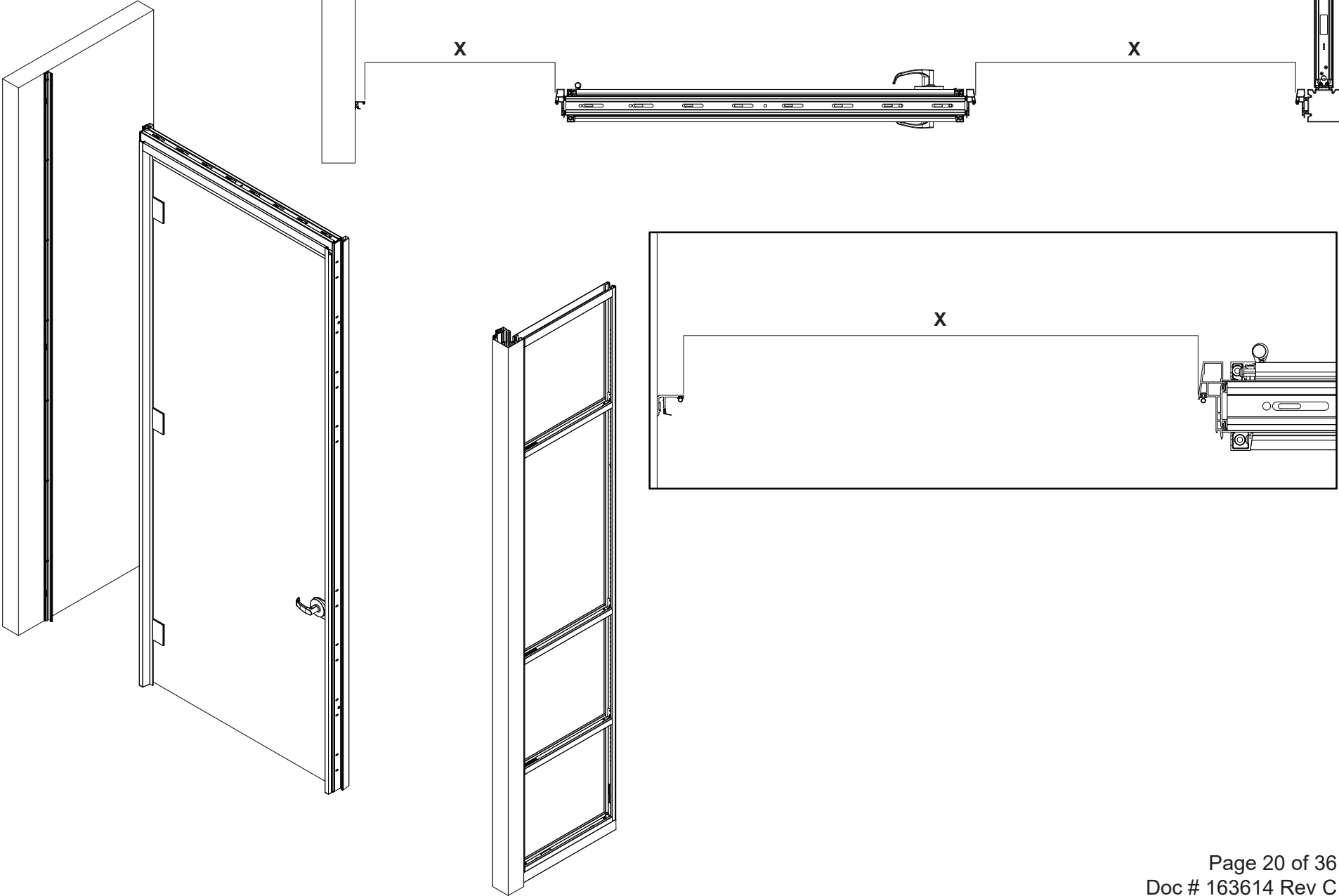


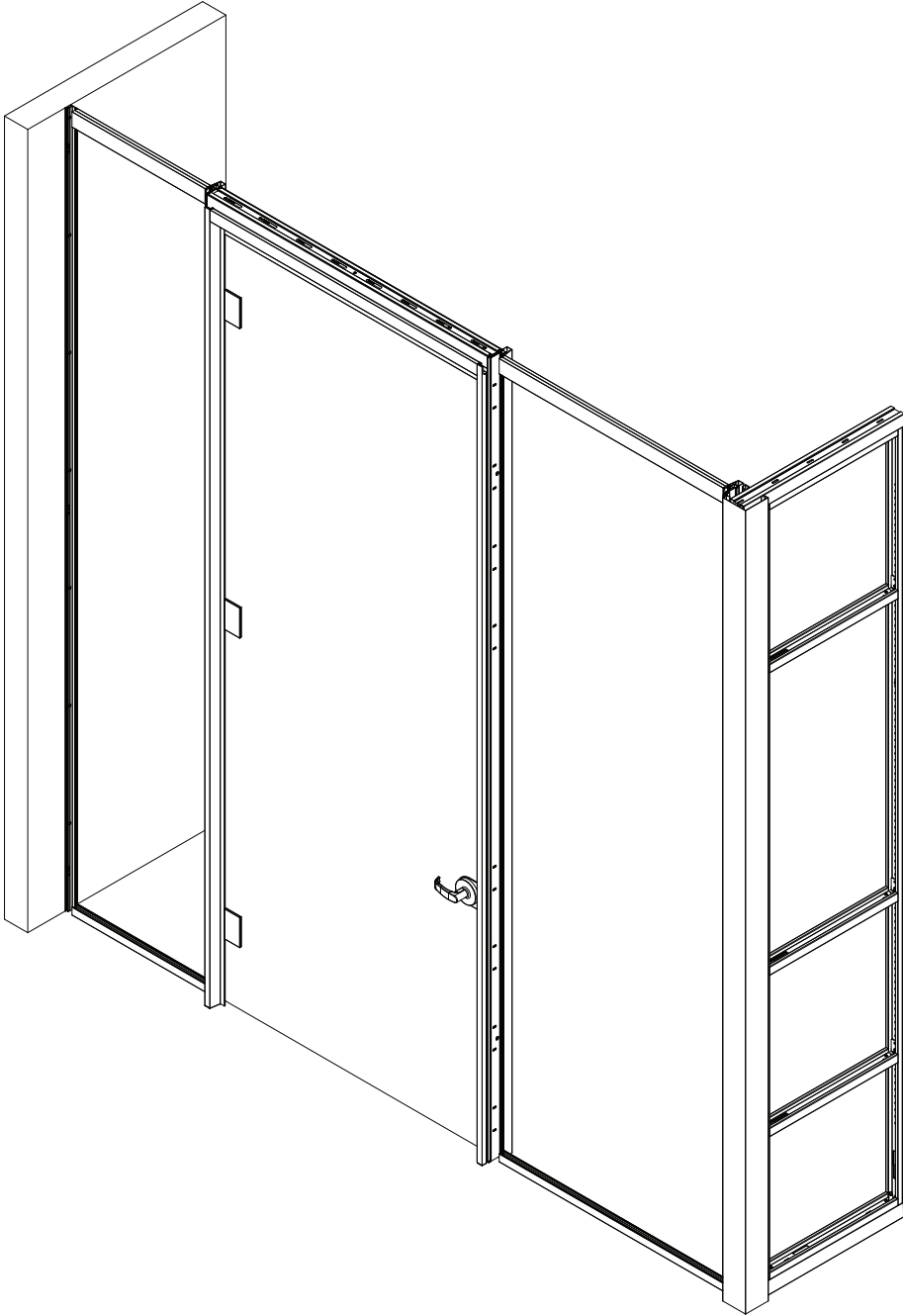
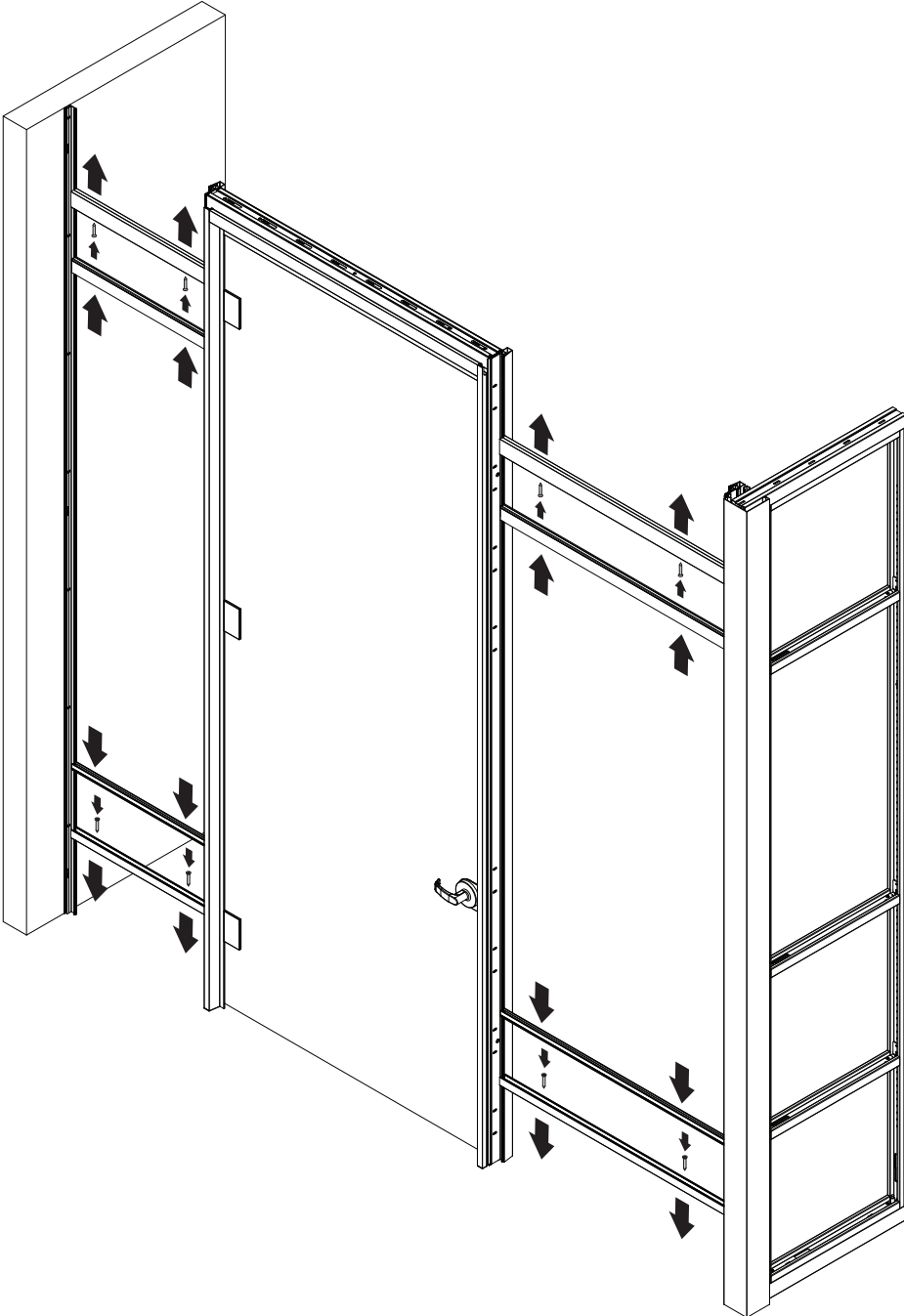
**NOTE:** When transitioning to a swing door frame, glass stop must be on same side of wall as angled door frame surface as shown.

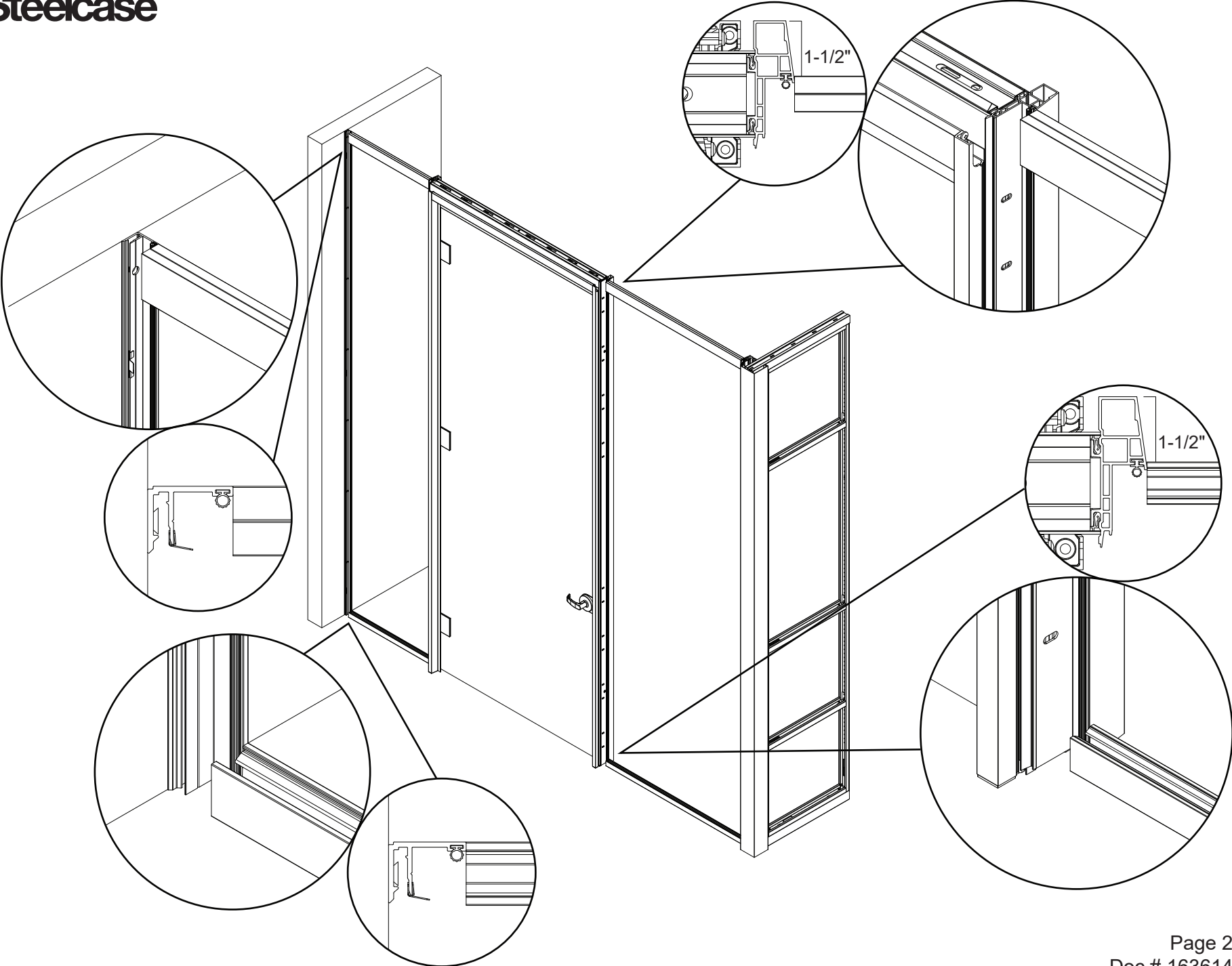
Angled Door  
Frame Surface

Glass Stop

Floor and Ceiling Tracks

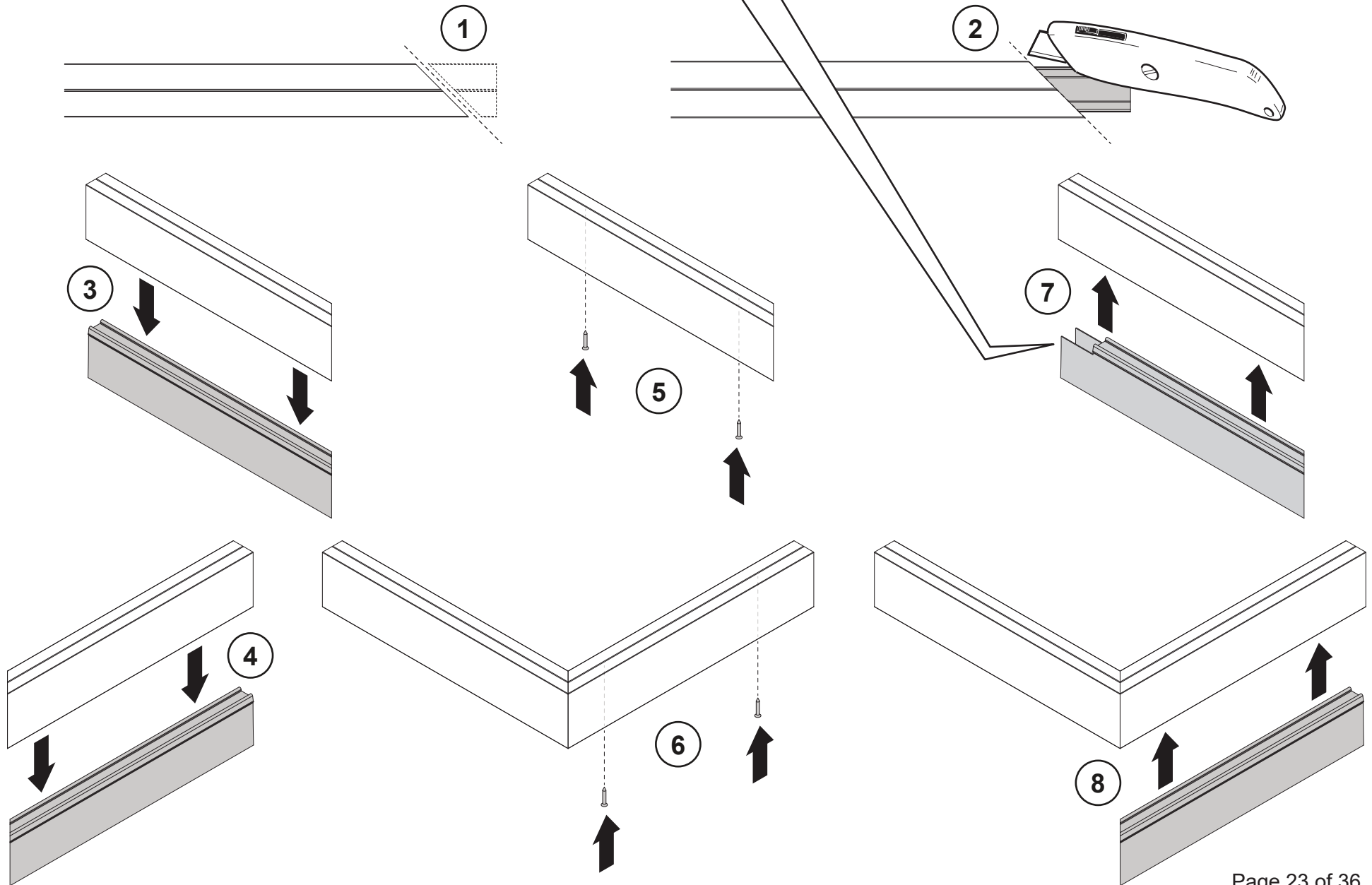




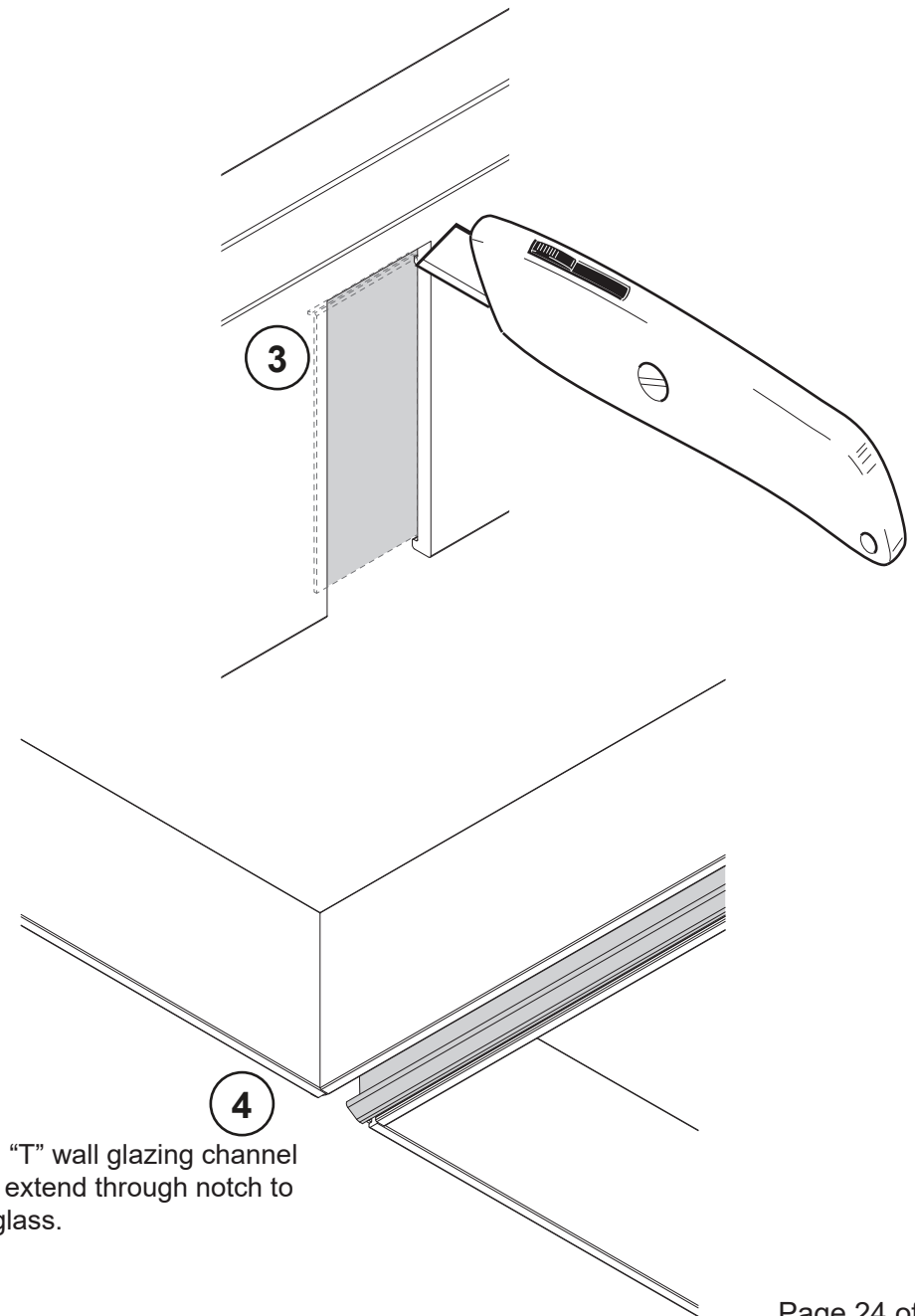
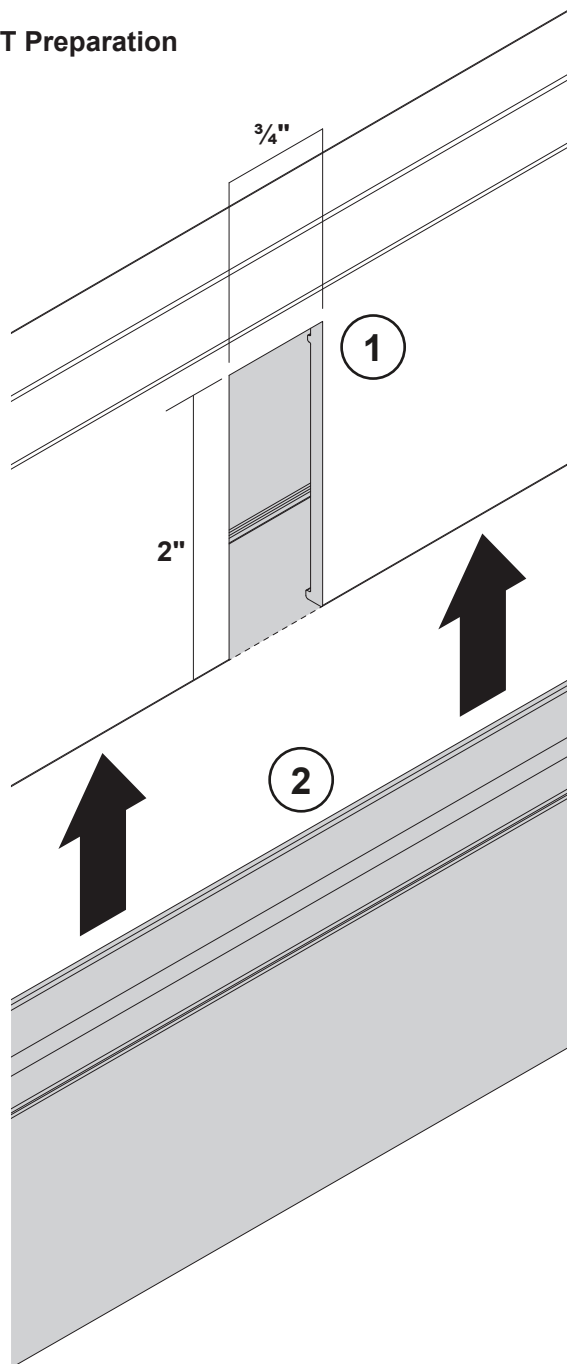


## Ceiling Track - Mitered Corner Prep

**NOTE:** Ensure glazing channel end opposite miter has clearance notch for post extension if necessary, prior to installing glazing channel.

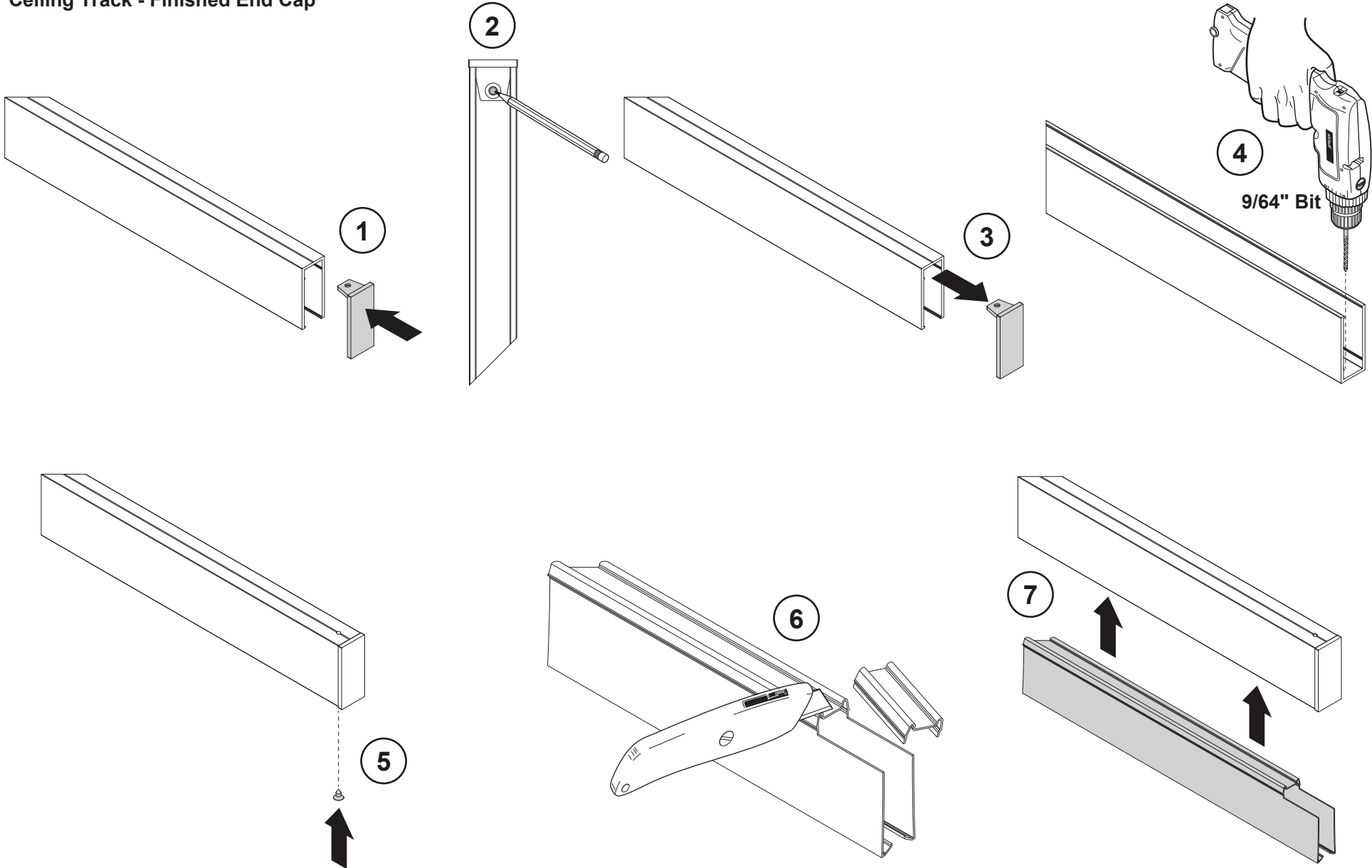


## Ceiling Track Glass-T Preparation

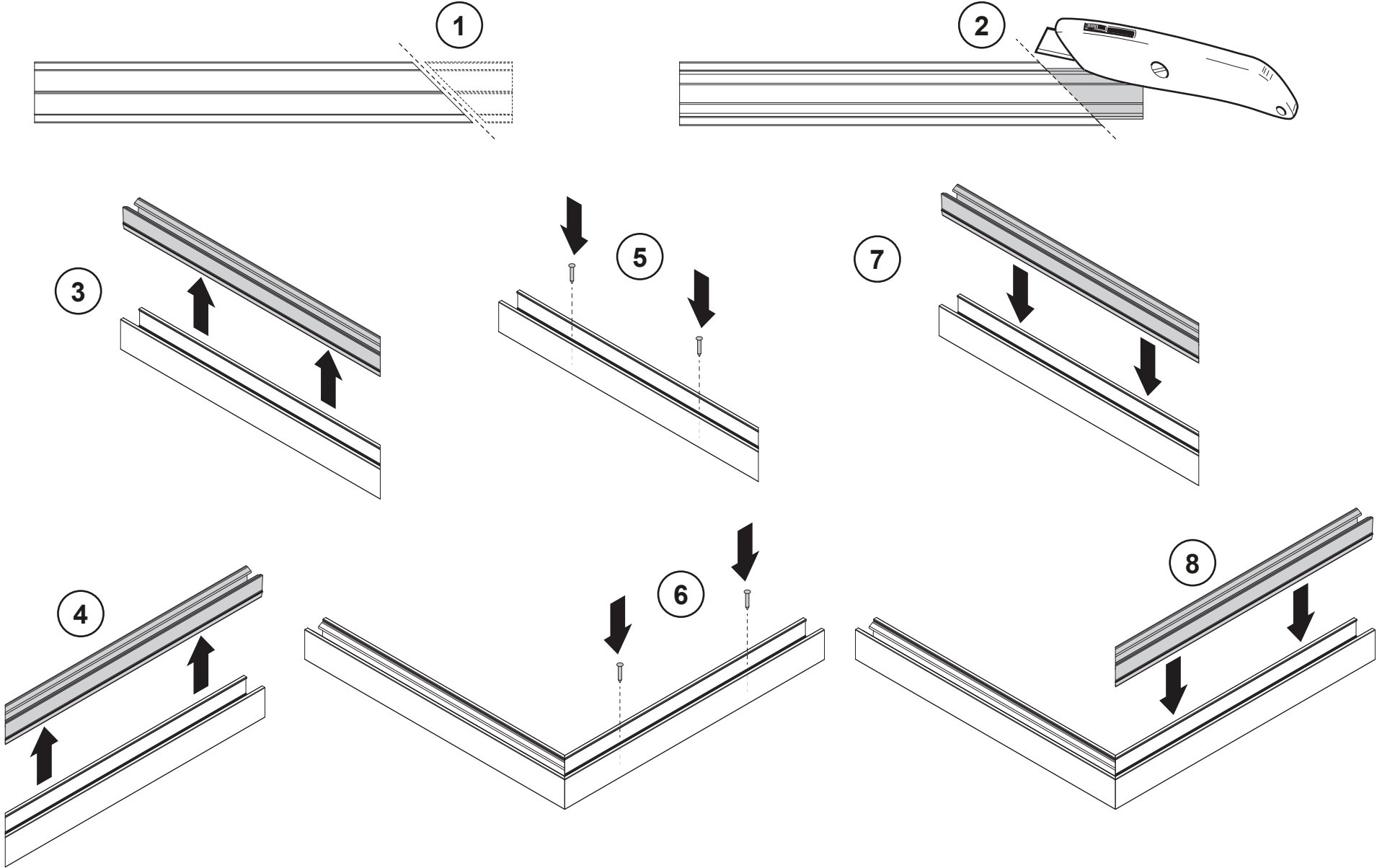


**NOTE:** "T" wall glazing channel should extend through notch to touch glass.

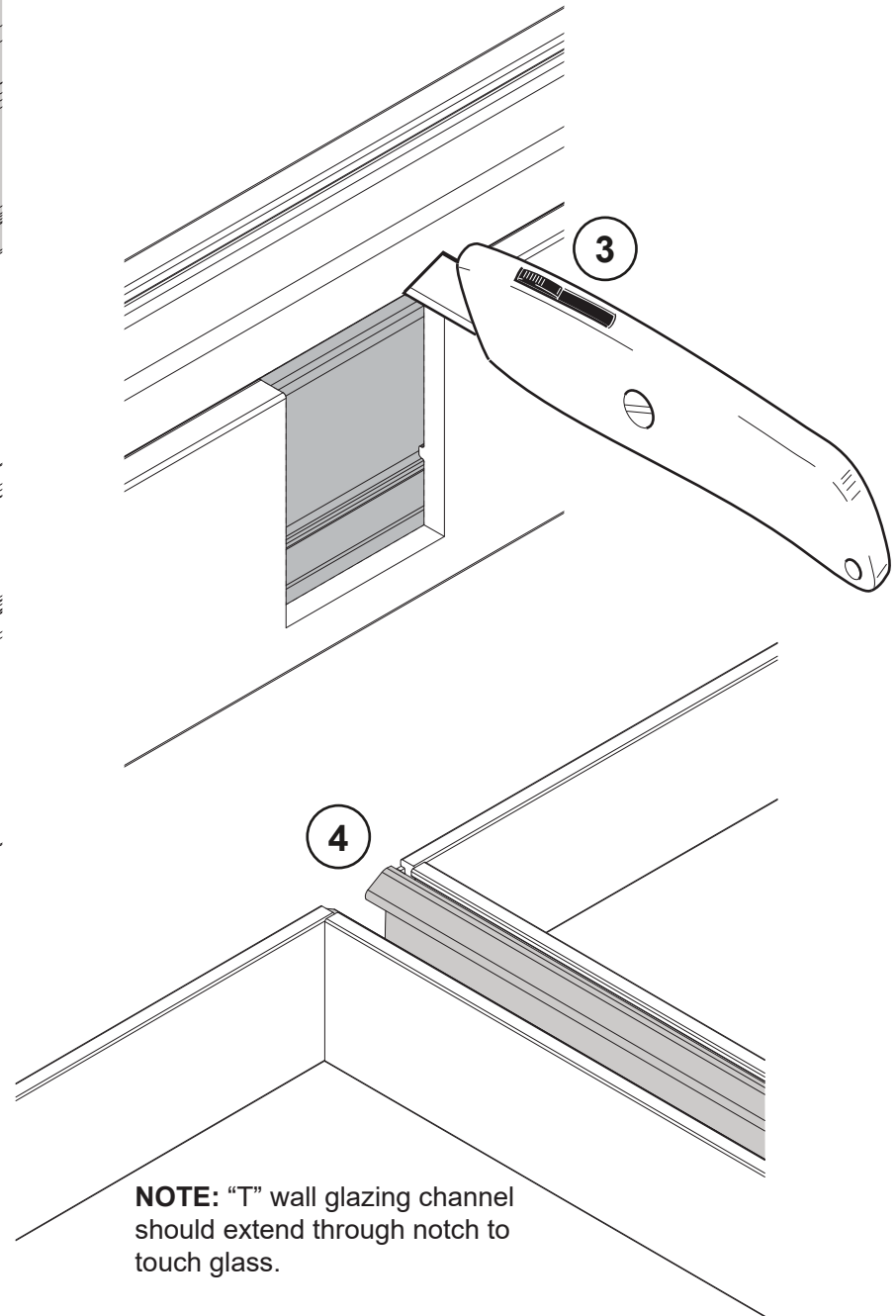
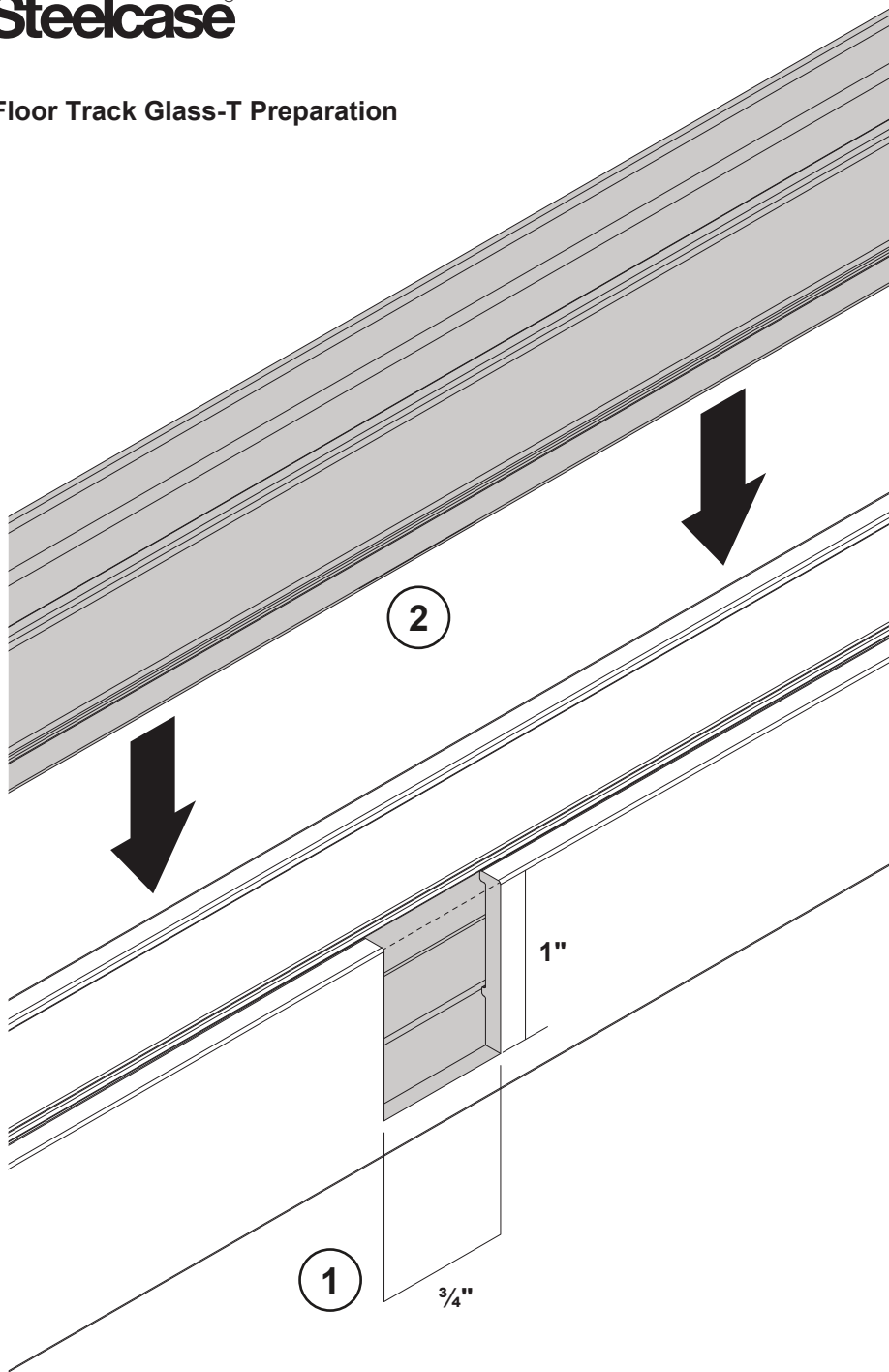
## Ceiling Track - Finished End Cap



Floor Track - Mitered Corner Prep

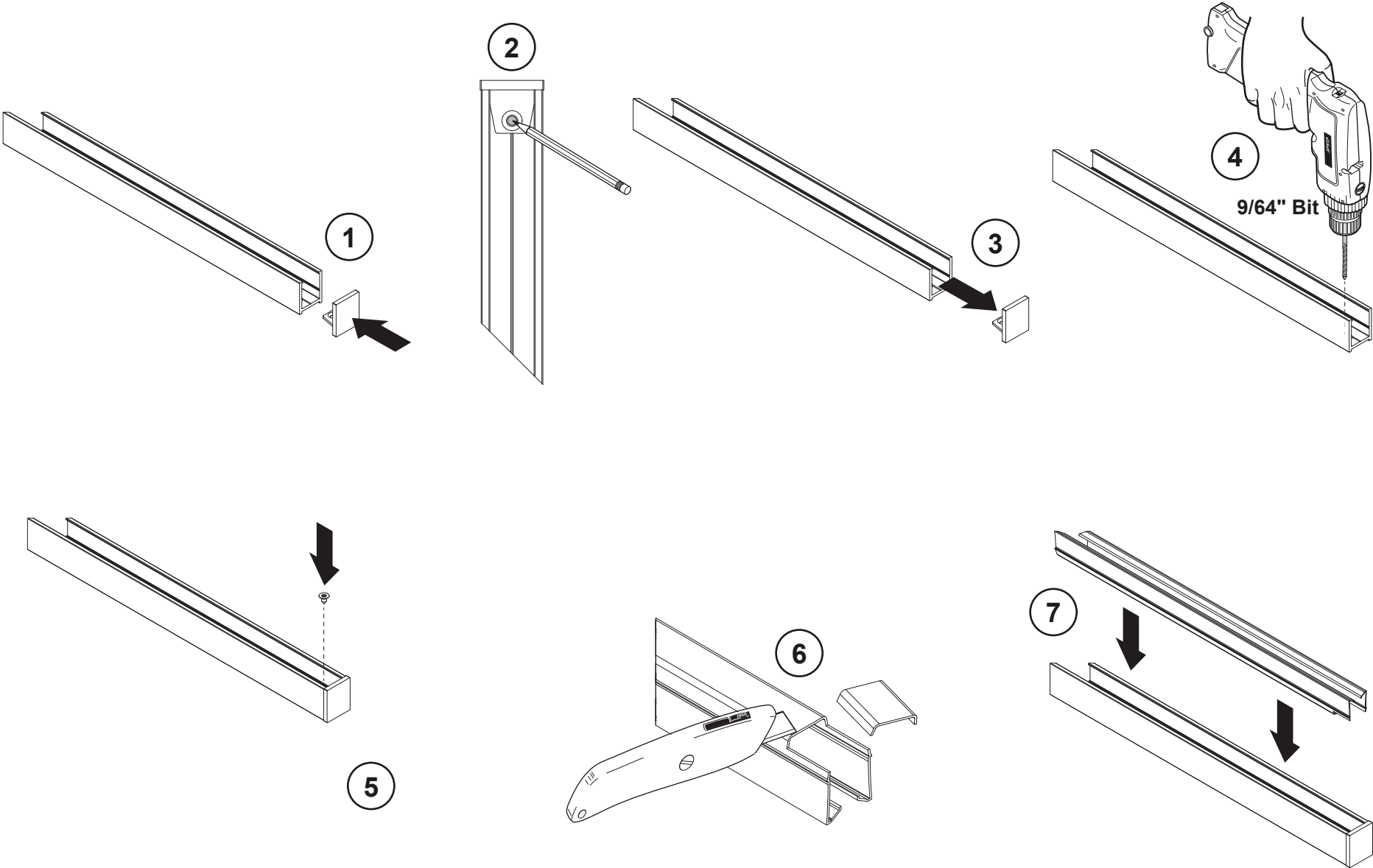


## Floor Track Glass-T Preparation



**NOTE:** "T" wall glazing channel should extend through notch to touch glass.

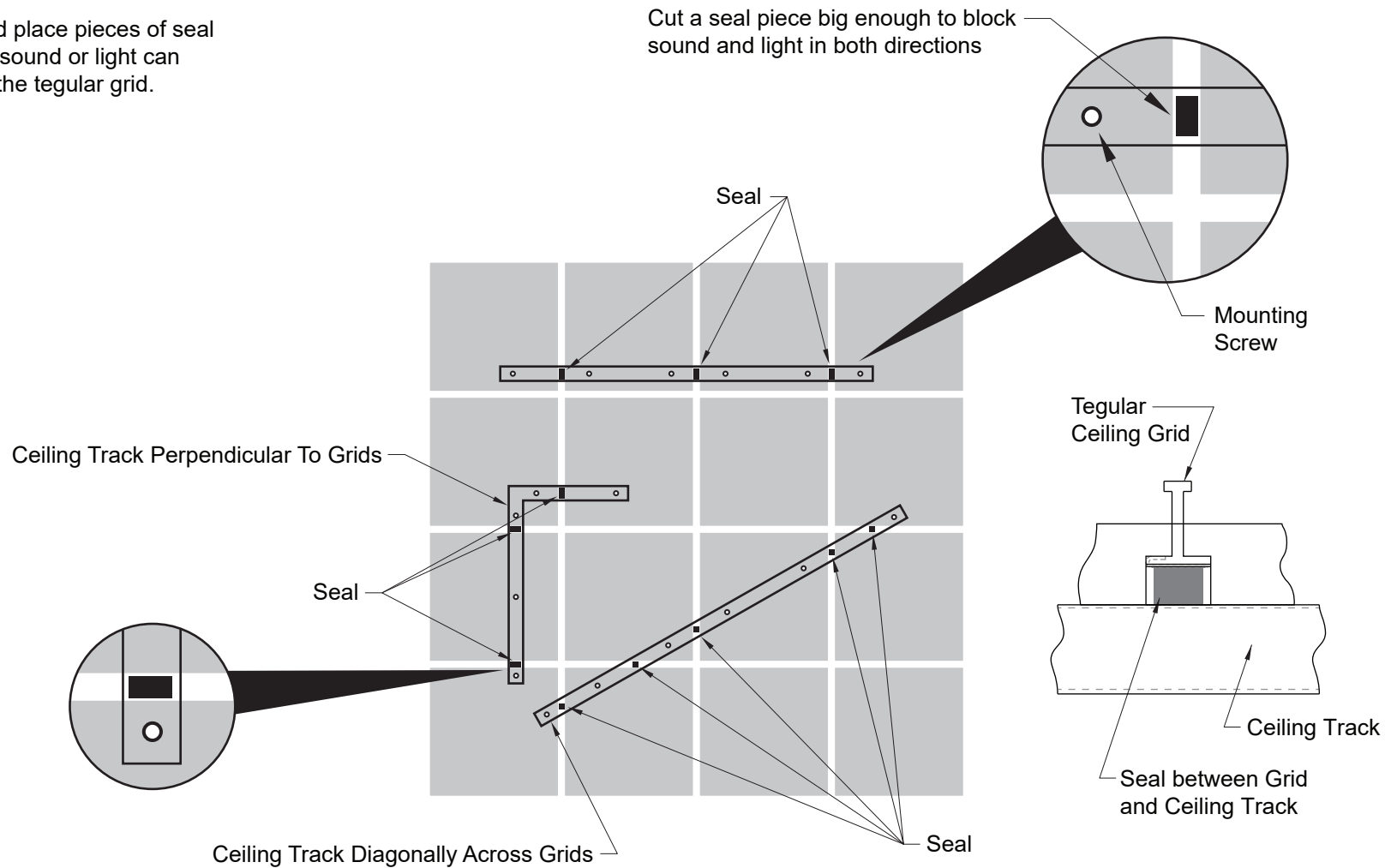
## Floor Track - Finished End Cap



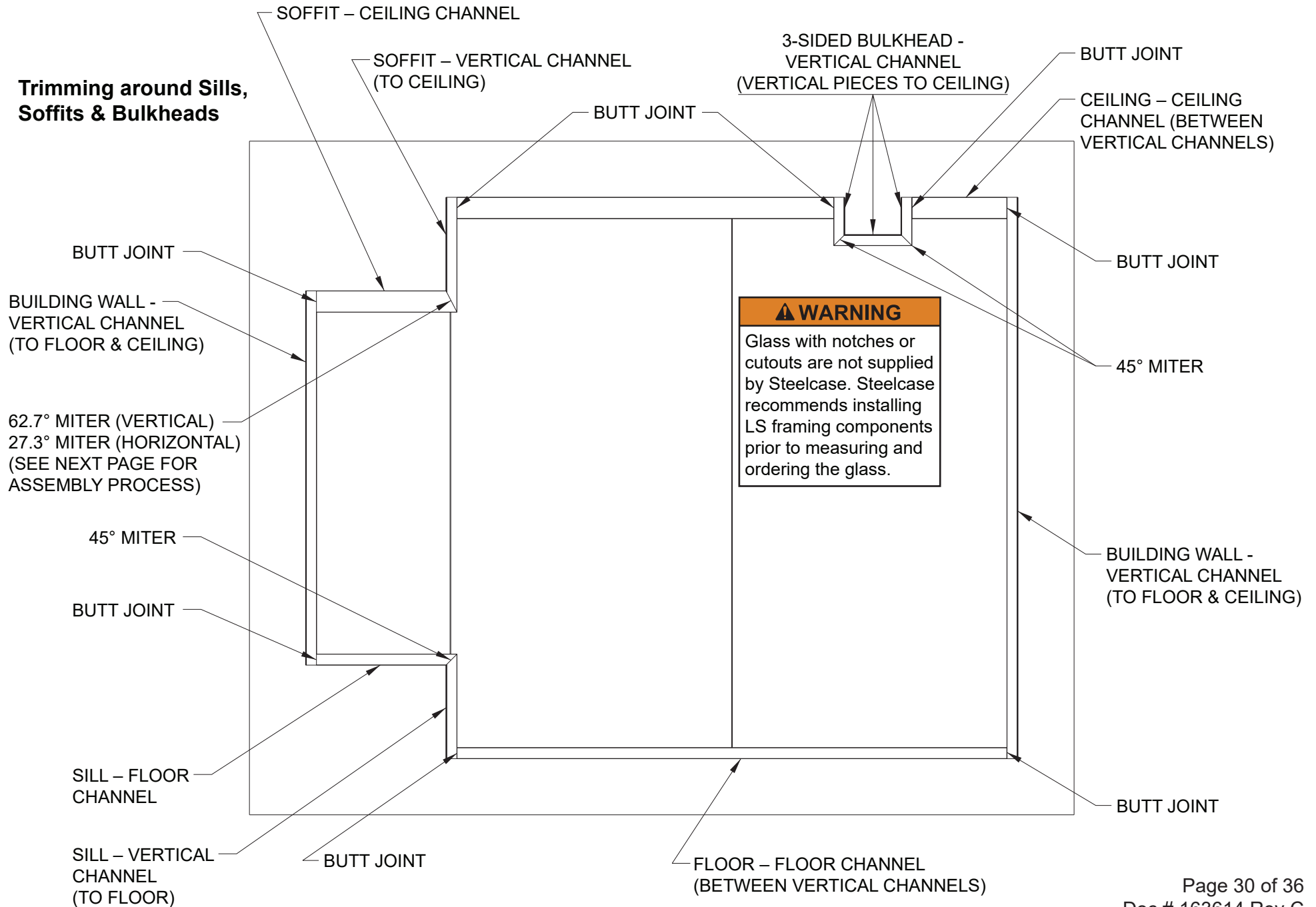
## Lite Scale (LS) - Everwall General Information - Installing Sound & Light Seal for Tegular Ceiling Applications

LS Ceiling Track is **NOT** installed inline with grid.

**NOTE:** Cut and place pieces of seal anywhere that sound or light can travel through the tegular grid.

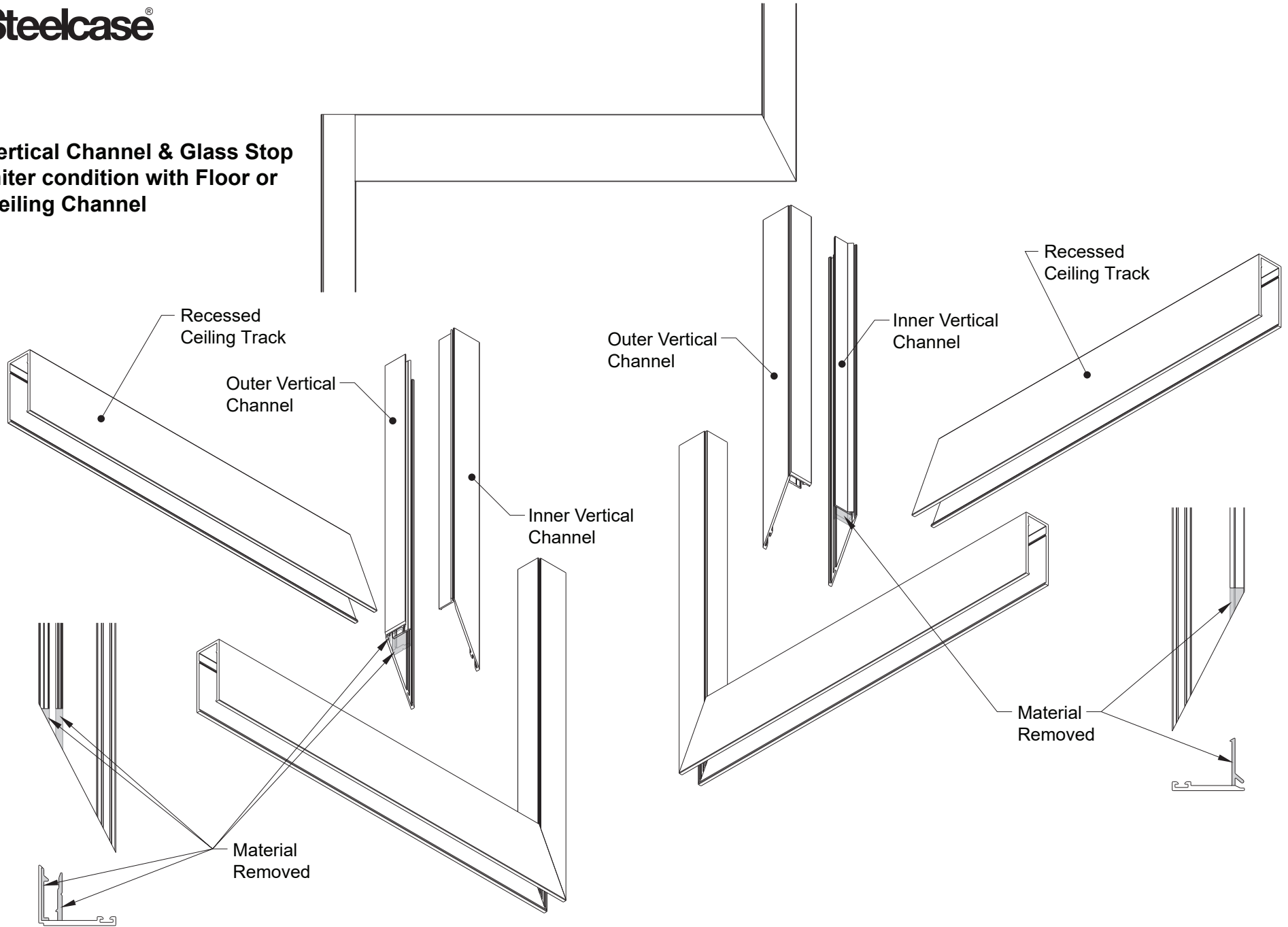


## Trimming around Sills, Soffits & Bulkheads



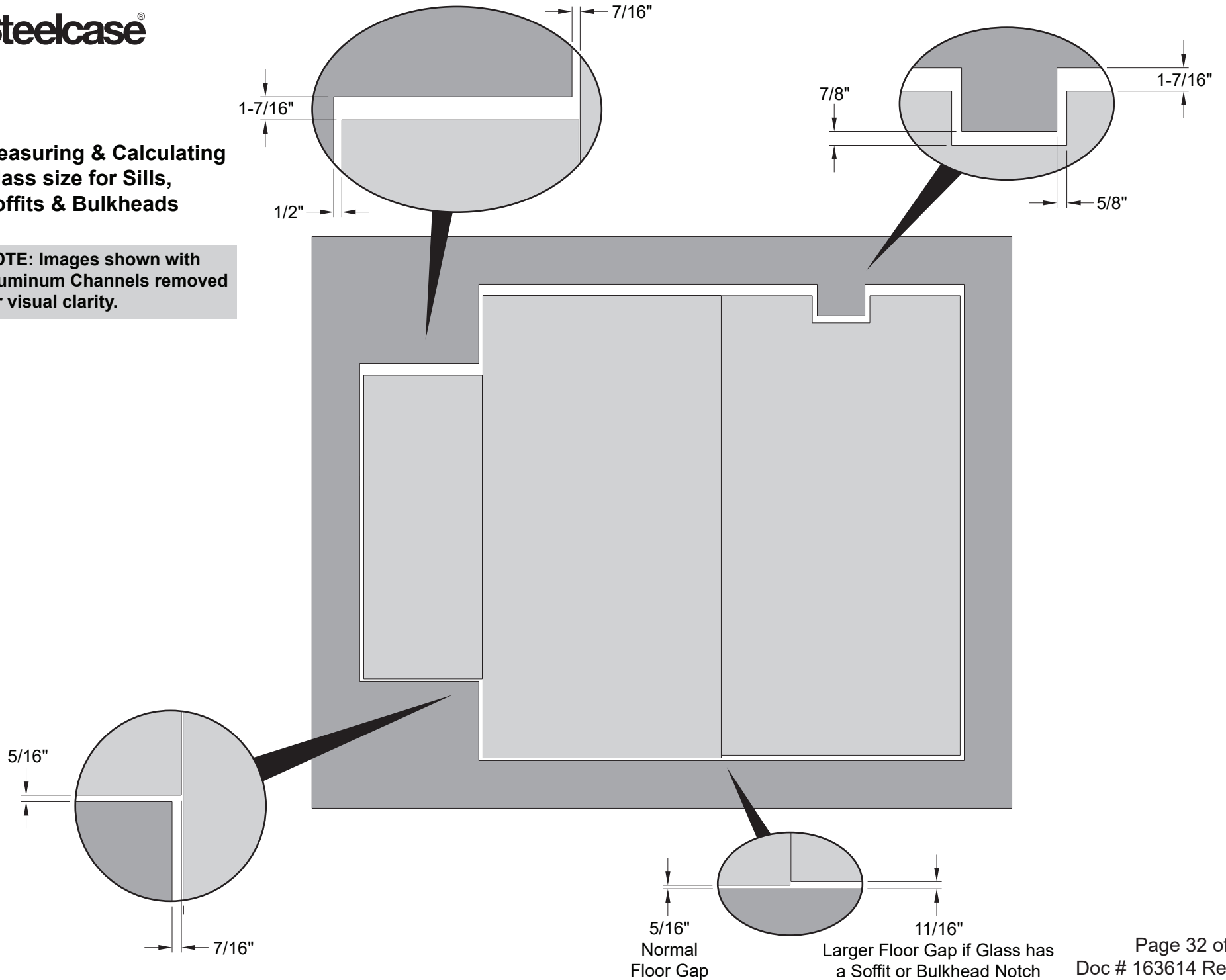
**⚠ WARNING**  
 Glass with notches or cutouts are not supplied by Steelcase. Steelcase recommends installing LS framing components prior to measuring and ordering the glass.

**Vertical Channel & Glass Stop  
miter condition with Floor or  
Ceiling Channel**

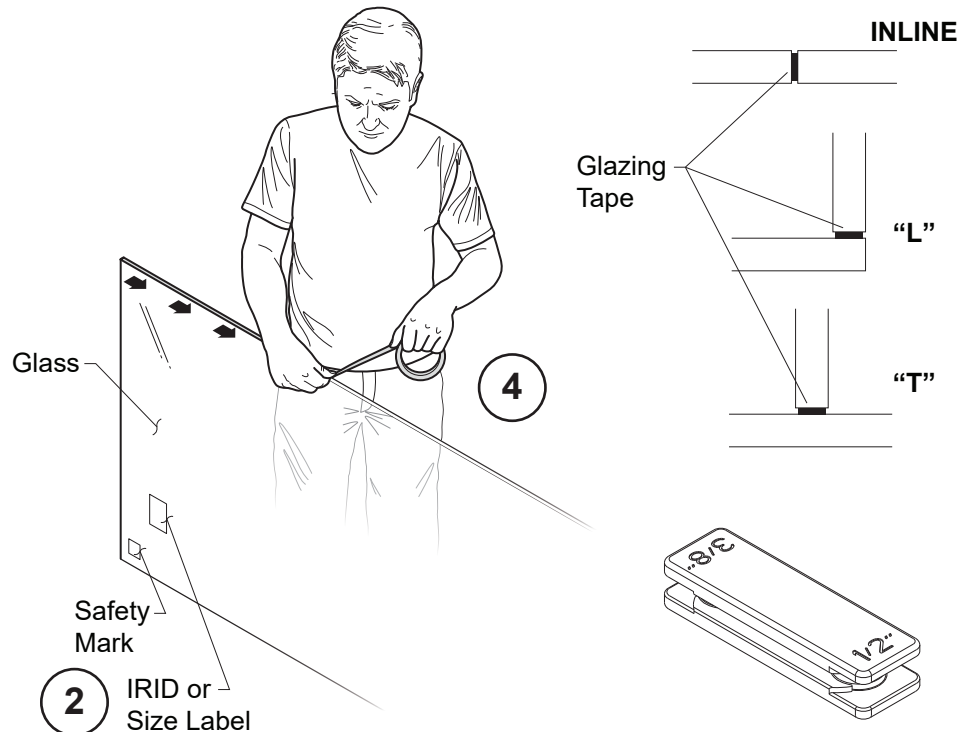


**Measuring & Calculating  
Glass size for Sills,  
Soffits & Bulkheads**

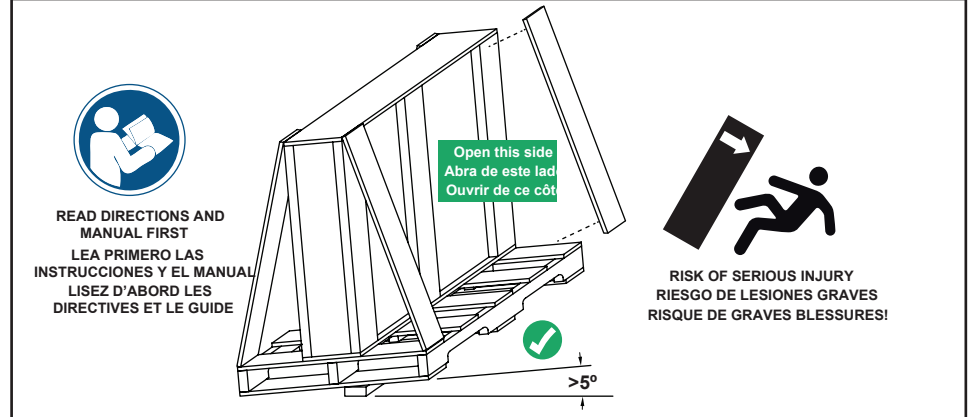
**NOTE:** Images shown with  
Aluminum Channels removed  
for visual clarity.



1. Read Warning (leftmost on this page) prior to uncrating glass.
2. Verify which glass (by layout, IRID, or size label) is to be installed in location desired. Take note of finish side options and safety label location to understand which edges may need glazing tape applied.
3. If glass requires glazing tape, clean the surface/edge of glass where glazing tape will be applied with isopropyl alcohol.
4. Apply glazing tape the entire length of glass. We recommend using the Steelcase glazing tape application tool. **Clear** glazing tape (3M 4918F VHB) used in inline applications. **Black** glazing tape used in 'L' & 'T' applications.
5. Repeat steps 2 through 3 for adjacent glass where glazing tape will contact when glass is installed.



### ⚠️ WARNING ⚠️ ADVERTENCIA ⚠️ AVERTISSEMENT



### Safety Instructions Instrucciones de Seguridad Consignes de Sécurité

- 
- Before opening, ensure crate is stable and tilted at least 5 degrees to prevent glass from falling out.
  - To open, cut any bands first and pry off boards on front of crate.
  - Before removing glass, check crate and remove protruding nails or screws that could scratch glass.
  - Wear appropriate personal protective equipment (safety glasses, gloves, safety shoes and skin protection).
  - Tempered Glass is very heavy and can shatter while handling. Use two or more people to handle glass.
  - Handle carefully. A scratched surface, damaged surface, or edge impact can cause the glass to shatter suddenly into sharp pieces.
- 
- Antes de abrir, asegúrese de que la caja esté estable e inclinada al menos por 5 grados para evitar que el vidrio se salga de la caja.
  - Para abrir, corte primero las bandas de embalaje y luego separe las tablas del frente de la caja.
  - Antes de retirar el vidrio, chequee la caja y quite los clavos o tornillos salientes que puedan rayar el vidrio.
  - Use el equipo apropiado de protección personal (gafas de seguridad, guantes, zapatos de seguridad y protección para la piel).
  - El vidrio templado es muy pesado y se puede romper durante su manipulación. Use dos o más personas para manipular el vidrio.
  - Manéjelo con cuidado. Una superficie rayada o dañada, o el impacto sobre el borde pueden causar que el vidrio se rompa de repente en trozos afilados.
- 
- Avant d'ouvrir, assurez-vous que la caisse à claire-voie est stable et inclinée d'au moins 5 degrés pour éviter que la vitre bascule hors de la caisse.
  - Pour ouvrir, coupez d'abord les bandes d'emballage, puis écartez les bords sur le devant de la caisse.
  - Avant de retirer la vitre, vérifiez la caisse et enlevez les clous ou les vis qui pourraient dépasser et qui pourraient égratigner la vitre.
  - Portez de l'équipement de protection individuelle approprié (lunettes de sécurité, gants, chaussures de sécurité et vêtements de protection).
  - Le verre trempé est très lourd et peut se briser en éclats lorsqu'on le manipule. Au moins deux personnes sont nécessaires pour manipuler la vitre.
  - Manipulez avec soin. Une surface égratignée ou endommagée ou encore un choc sur le rebord peut faire en sorte que le verre se brise soudainement en éclats tranchants.

**1.** Where glass will be installed, insert 2 glazing blocks into the floor channel approximately 1/4 the width of the glass from each edge of glass. Recommended size for glazing block 1/8" thick x 1/2" wide x 4" long. Shims 1/32" thick x 1/2" x 4" long.

**TIP:** Shim each glazing block with laser & tape measure prior to installing glass.

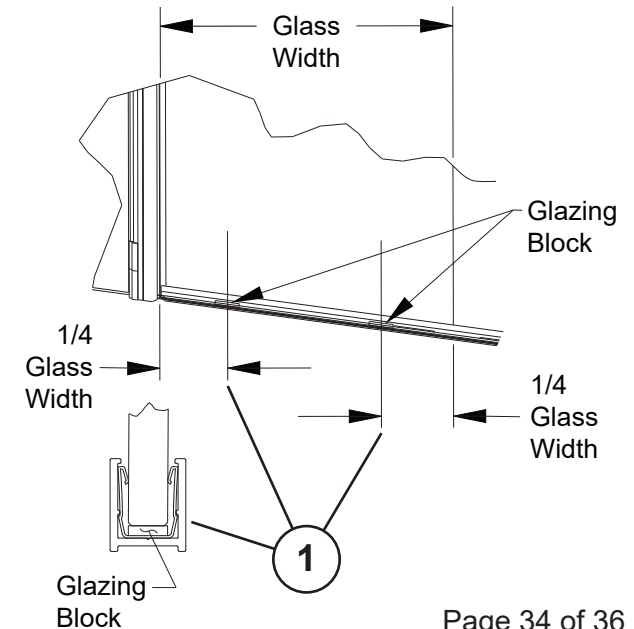
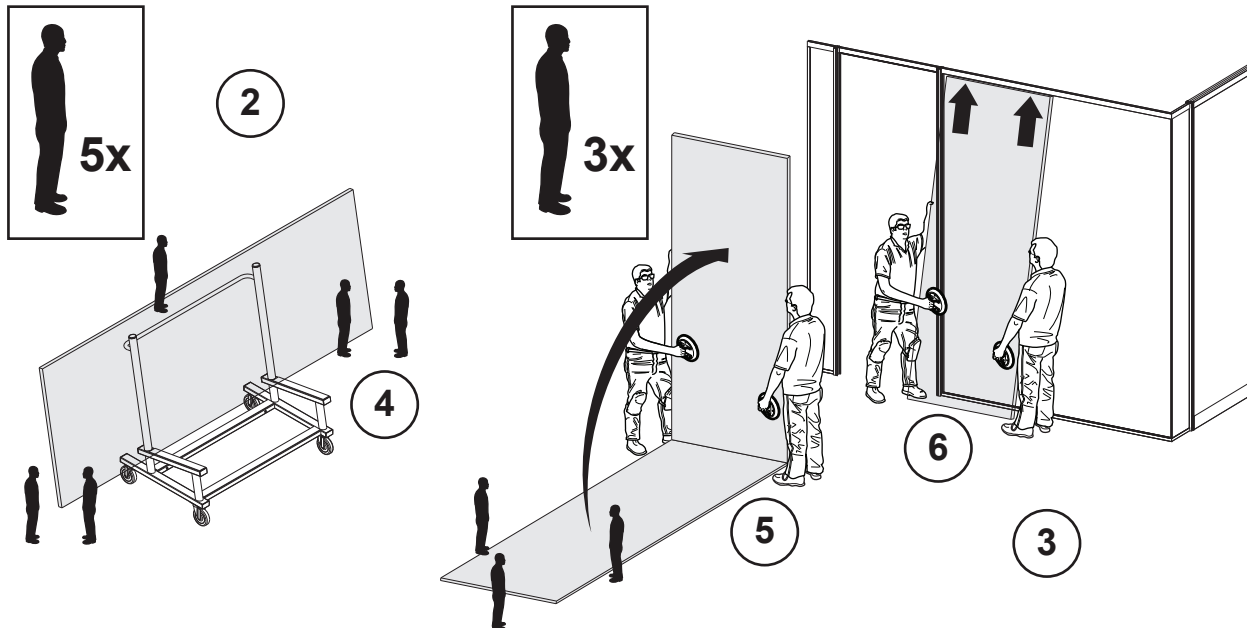
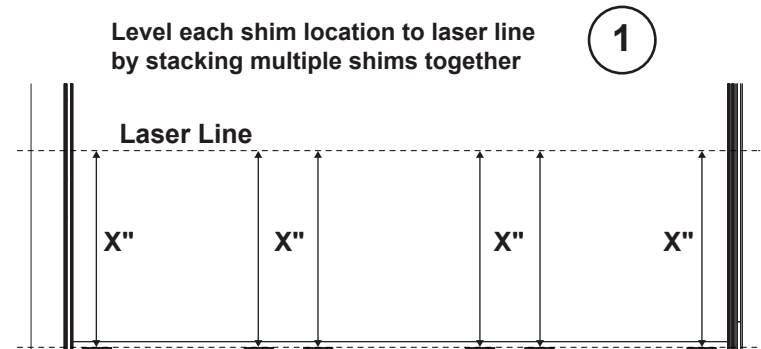
**2.** Make sure all installers understand safety warning on page 33.

**3.** Make sure floor is clean of debris around glass install site. Also make sure installers understand glass orientation before installing.

**4.** With sufficient amount of help lift glass from panel cart and set bottom end of floor close to LS frame.

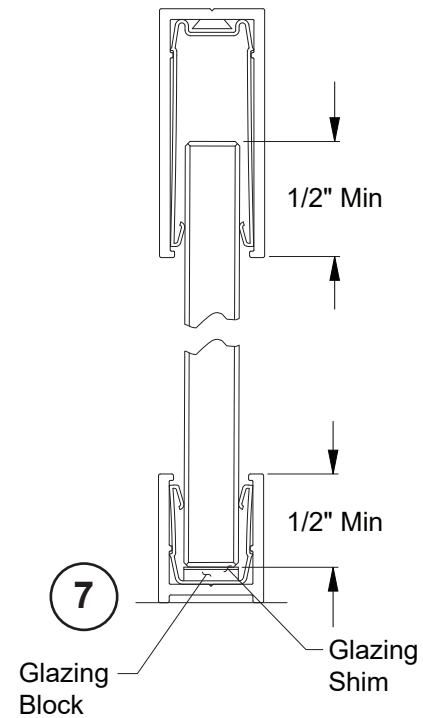
**5.** Lift top of glass to vertical position. Installer(s) on bottom end will insure glass doesn't slide while installers on top end are lifting.

**6.** Lift top of glass into ceiling channel and set bottom of glass into floor track. Be careful not to set the edge of the glass on channel.



## Lite Scale (LS) - Everwall General Information - Installing Glass (Continued)

**7.** Use laser to plumb edge of glass. Shim the glass to plumb/level as required. Have installer(s) lift glass out of floor track and insert thin shim(s) as required until glass is plumb/level. Maintain a minimum of 1/2" capture of glass at the floor and ceiling.



## Lite Scale (LS) - Everwall General Information - Installing Glass next to Glass

- 1.** Before removing backer on adhesive, slide glass together to check glass plumbness and ensure there are no gaps between the glass. Shim as required (See page 37).
- 2.** Slide glass apart to create a small gap between the two pieces of glass to allow for removal of tape backer. Remove tape backer.
- 3.** Use suction cup seam setter tool as shown to align the glass and to draw the glass together.

