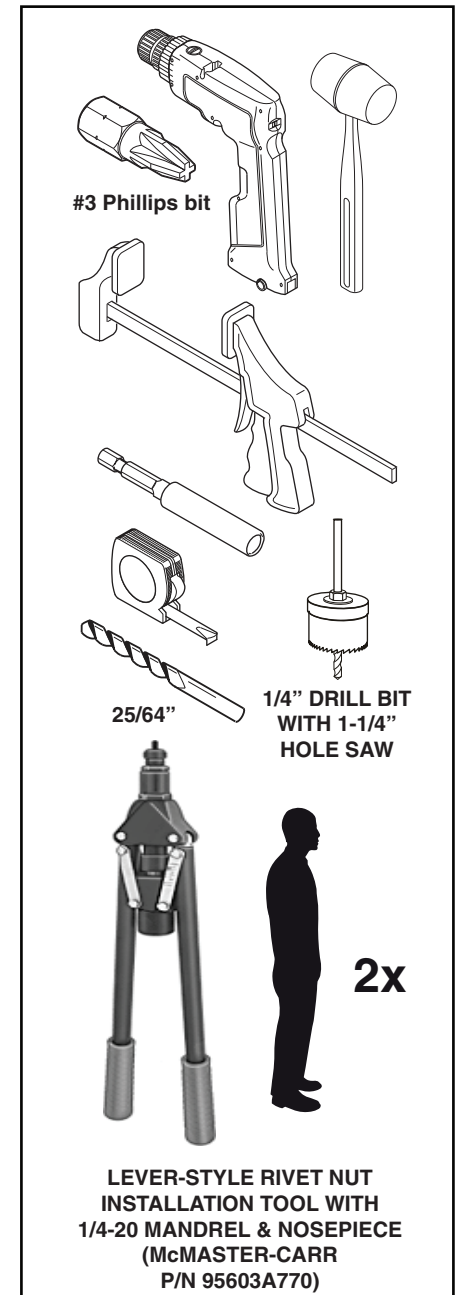
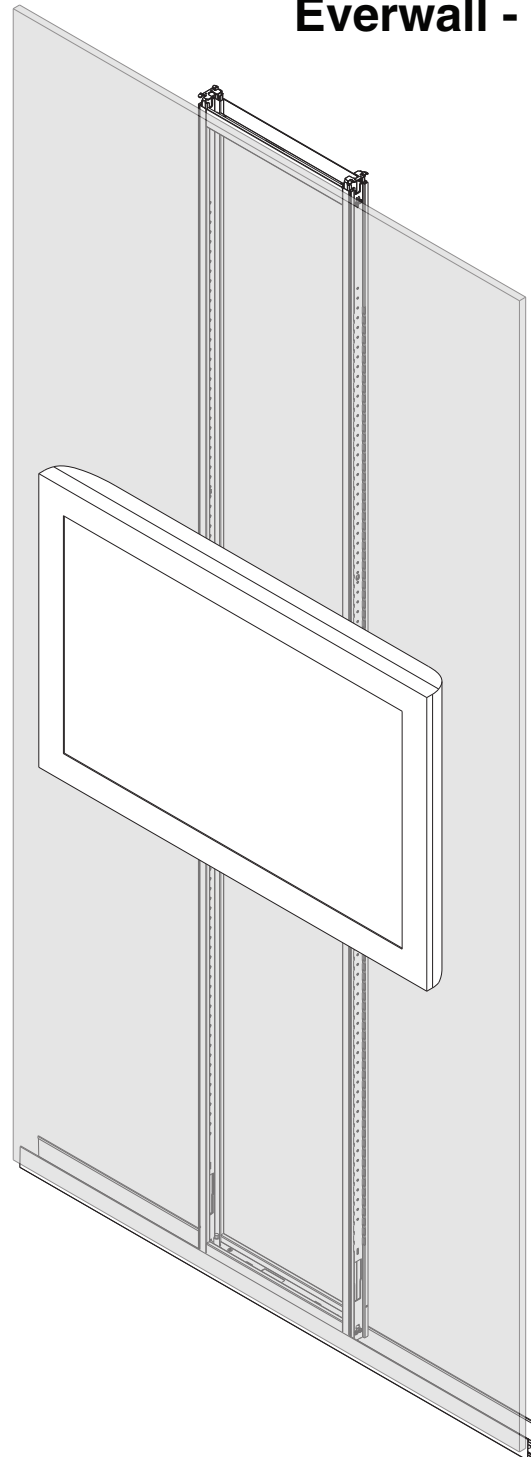


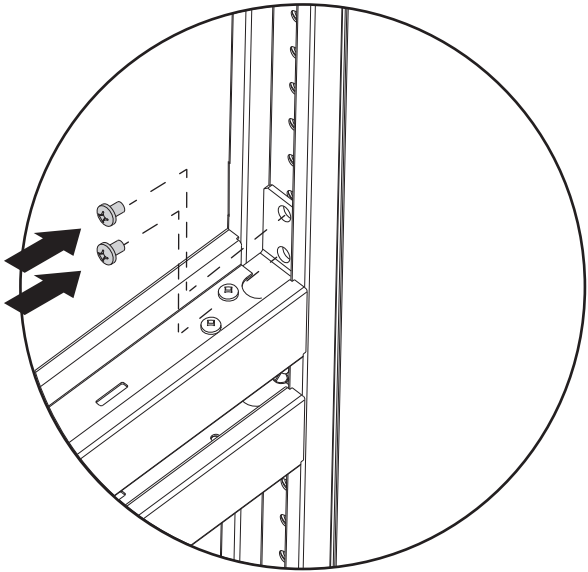
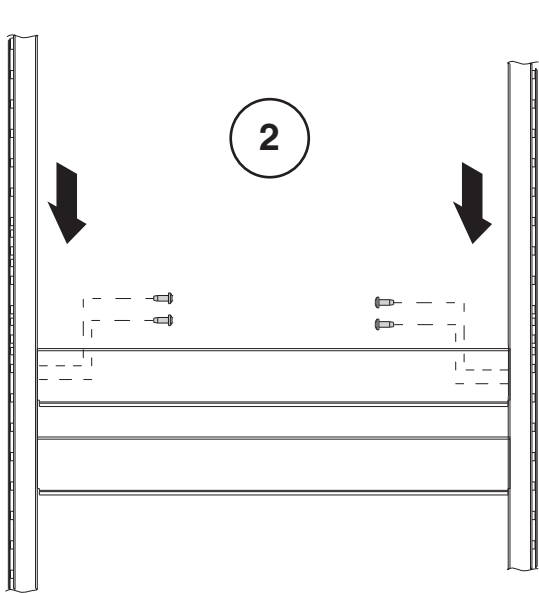
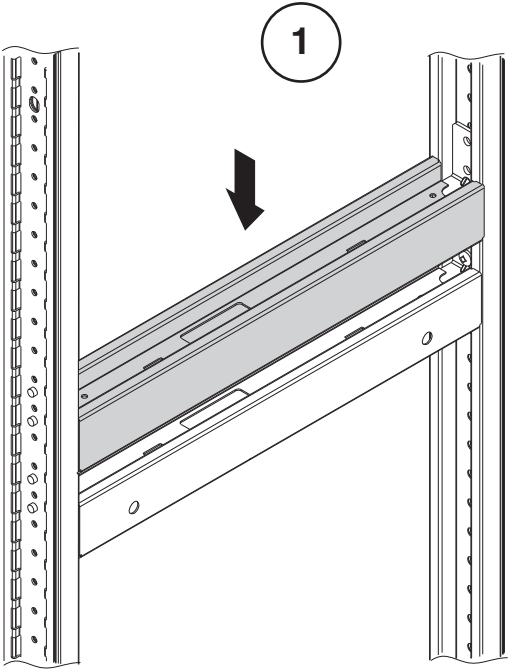
Non-Seismic Applications*

* The building's Engineer of Record must be consulted to determine if there are any seismic requirements.

CAUTION	
	CRUSH HAZARD! FAILURE TO PROPERLY SECURE EVERWALL TO THE BUILDING COULD RESULT IN PERSONAL INJURY.
<p>Read the entire Assembly Directions before beginning installation.</p> <p>Building construction varies greatly. The Building's Engineer of Record is responsible for the design of building floors, ceilings and walls which Privacy Wall attaches to and must verify the adequacy of the mounting solutions, even if provided by Steelcase.</p> <p>The building owner or designated agent is responsible for verifying that the installation is in compliance with all local codes and regulations.</p>	



**Note: Space supports
as required**

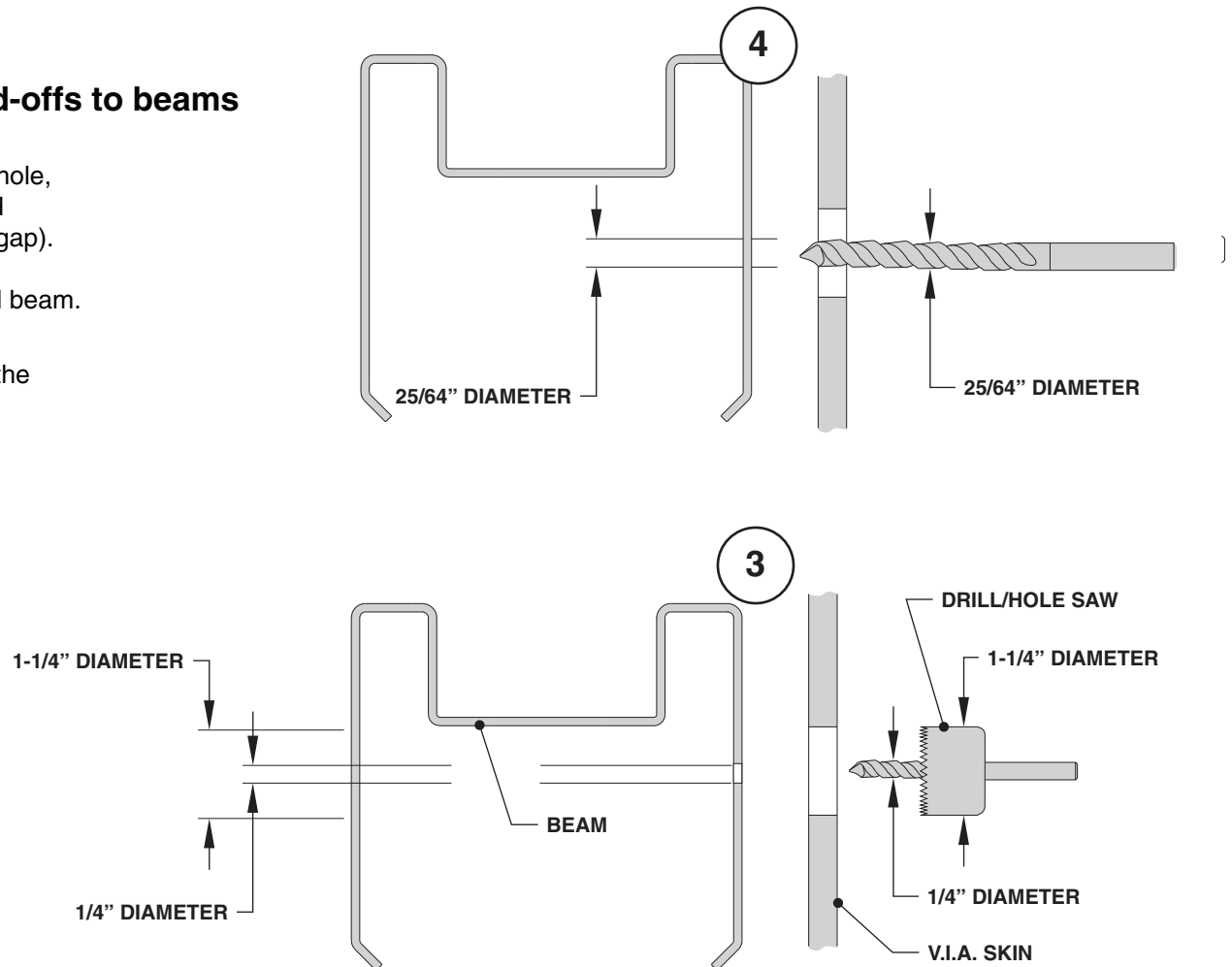
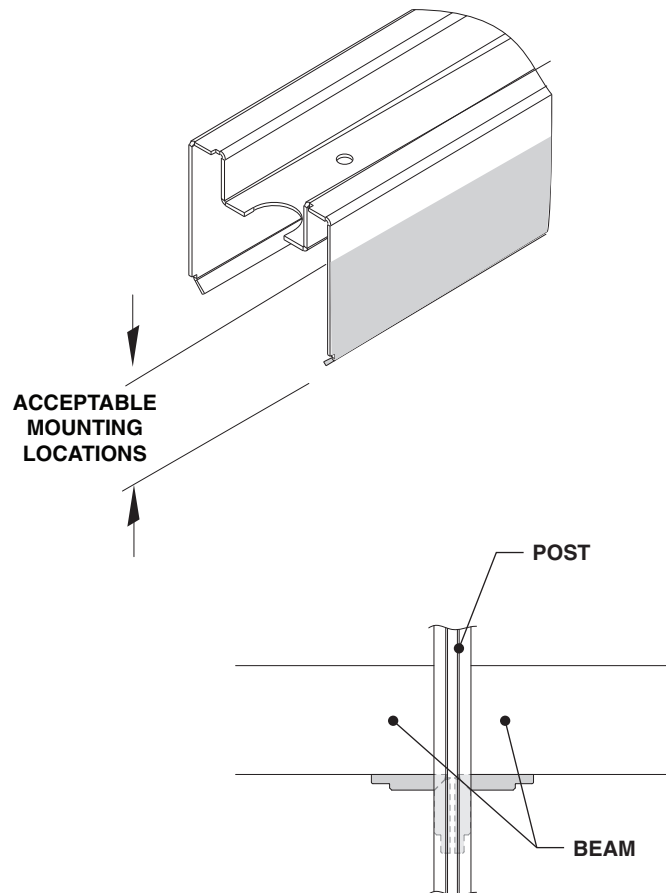


Install rivet nut anchors and spacers/stand-offs to beams

3. Using 1-1/4" diameter hole saw with 1/4" diameter pilot hole, drill through Everwall skin at furniture mounting locations and stand-off locations (to maintain consistent furniture-to-skin gap).

NOTE: The 1/4" diameter pilot should drill through the steel beam.

4. Use 25/64" diameter drill bit to open up the 1/4" hole in the steel beam.



5. Install 1/4-20 rivet nut into steel beam using lever style installation tool. Follow instructions provided with installation tool for installing rivet nut into 1/8" thick steel beam.

TIP: To ensure flange of rivet nut is fully seated against the steel beam, tap the back side of the installation tool with a rubber mallet. Visually inspect that the rivet nut flange is tight to the face of the structural beam.

6. Install spacers/stand-offs into foam ring, then install into hole in Everwall skin.

Install Monitor mount using 1/4-20 fasteners.

