

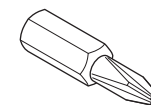
If you have a problem, question, or request, call your local dealer, or Steelcase Line 1 at **888.STEELCASE** (888.783.3522) for immediate action by people who want to help you.  
(Outside the U.S.A., Canada, Mexico, Puerto Rico, and the U.S. Virgin Islands, call: 1.616.247.2500)  
Or visit our website: [www.steelcase.com](http://www.steelcase.com)

© 2011 Steelcase Inc.  
Grand Rapids, MI 49501  
U.S.A.

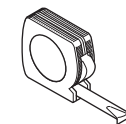
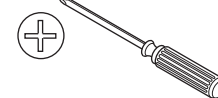
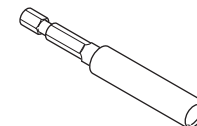
Printed in U.S.A.

### Table of Contents

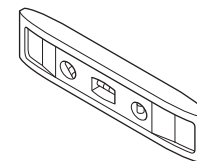
Topic	Page
Rail Mount Kit	2
c:scape Rail Mount Kit	4
Privacy Wall Mount Kit	5
Post and Beam Mount Kit	7
media:scape Mount Kit	8
Single Gang Junction Box Mount Kit	9
VIA Glass Mount	10
Standard Glass Mount	12



#2 PHILLIPS BIT



1/2" Dia.  
5/16" Dia.



## Rail Mount Kit

### Compatibility:

- FrameOne
- c:scape Beam
- c:scape back to back desk (bench)
- c:scape desk

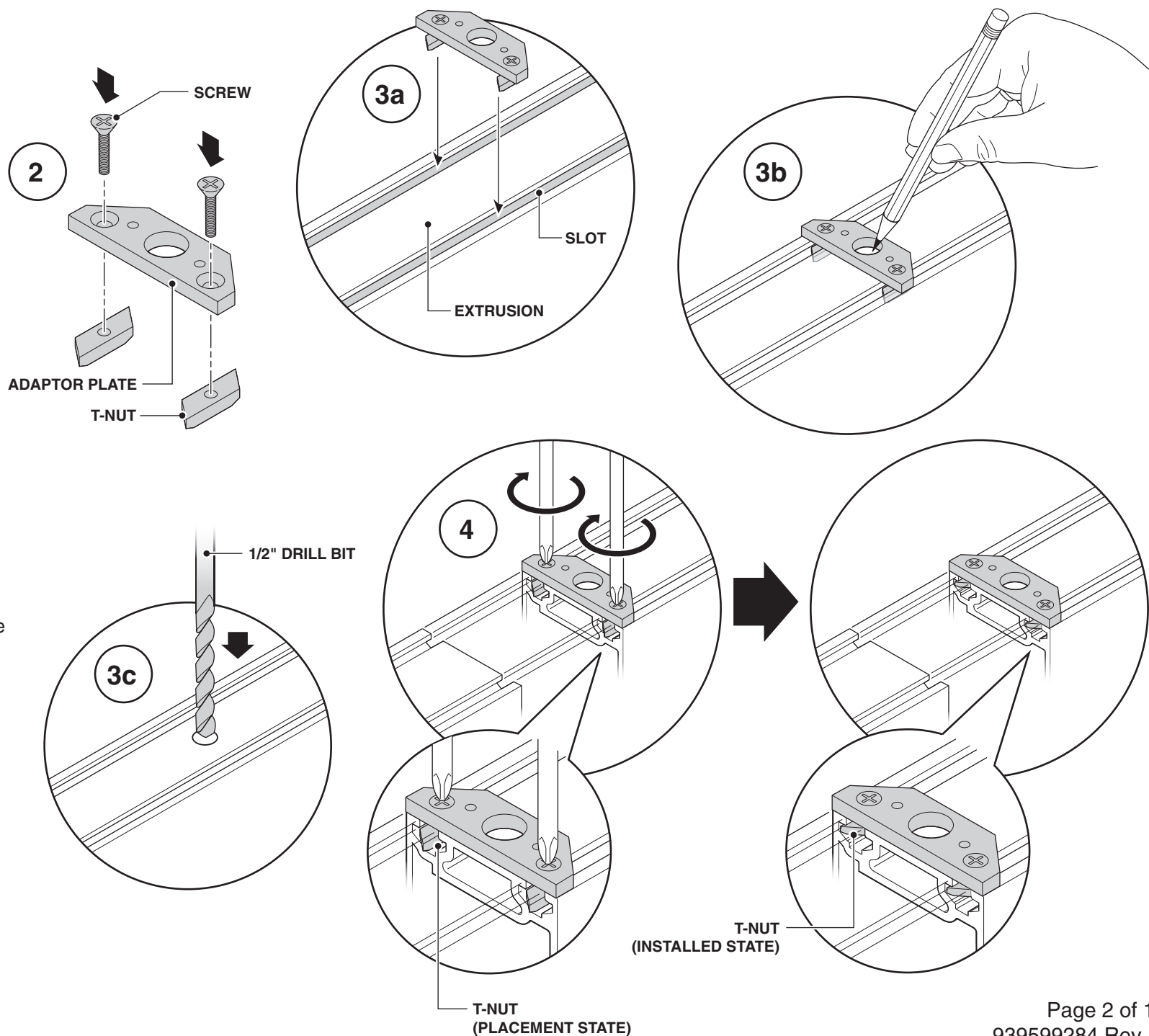
## Frame One

**1.** Determine location of RoomWizard II.

**2.** Insert two (2) screws through holes in adaptor plate and into T-nuts. Loosely tighten.

**3.** Place adaptor plate onto extrusion making sure T-nuts fit into slots (3a) and mark hole with pencil (3b). Remove adaptor plate and drill a 1/2" hole into extrusion (FrameOne or c:scape beam) for power over ethernet cable (3c).

**4.** Place adaptor plate back onto extrusion, making sure T-nuts fit into slots and tighten onto extrusion.

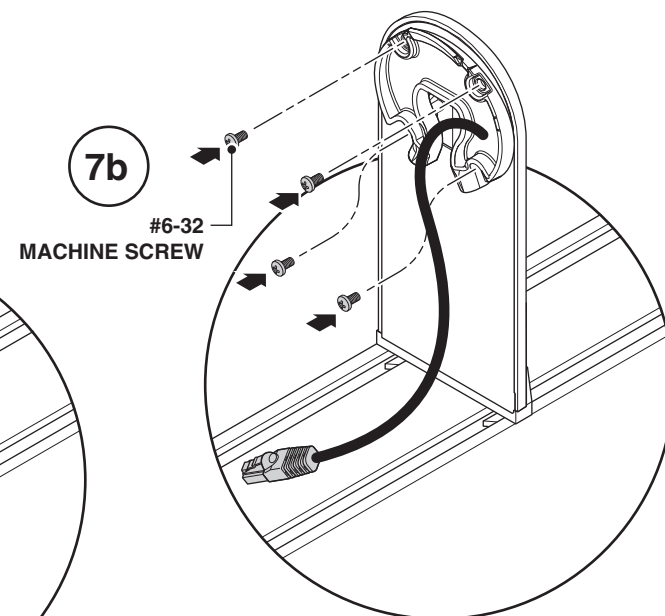
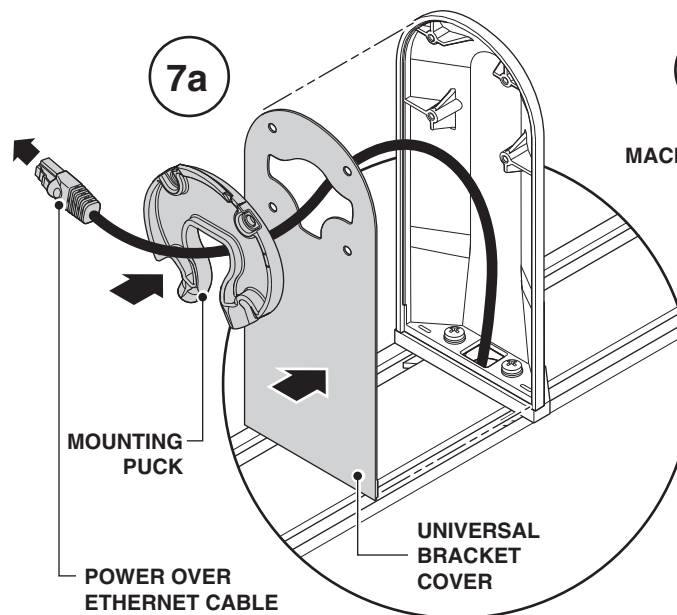
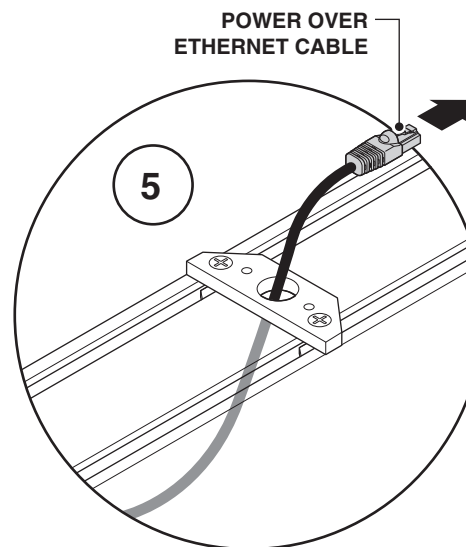
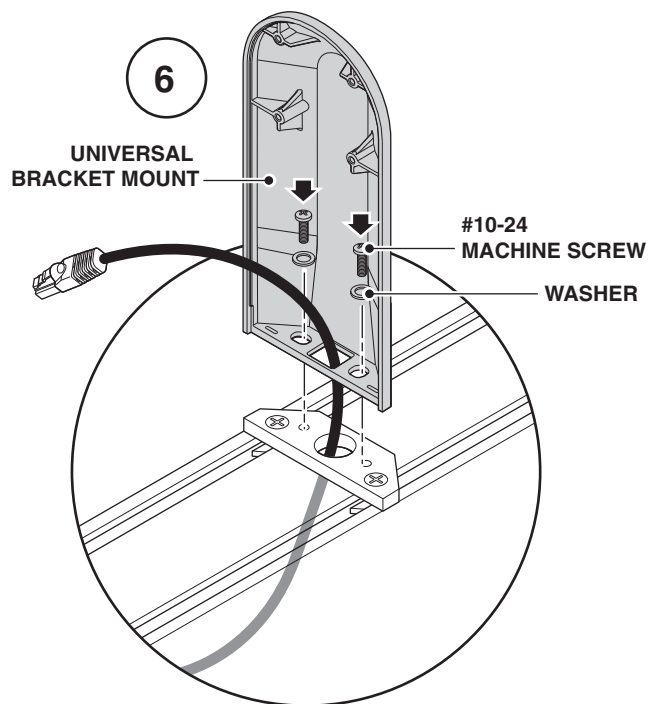


**5.** Route power over ethernet cable through extrusion and adaptor plate.

**6.** Secure universal bracket mount to the adaptor plate using two (2) #10-24 machine screws and two (2) washers.

**7.** Align universal bracket cover and puck with the universal bracket mount. Route power over ethernet cable through universal bracket cover and puck (7a). Attach universal bracket cover and puck to universal bracket mount using the four (4) provided #6-32 machine screws with a #2 phillips screwdriver (7b).

**8.** Refer to RoomWizard II installation quickstart guide for remaining assembly.



## c:scape Rail Mount Kit

**1.** Determine location of RoomWizard II.

**2.** Align T-nuts with holes on bottom of universal bracket mount and loosely tighten.

**3.** Place universal mount bracket onto rail making sure T-nuts are placed into slot on rail.

**4.** Route power over ethernet cable through square hole in bottom of universal bracket mount.

**5.** Tighten the two (2) provided T-nuts using a phillips screwdriver.

**6.** Perform steps 6a and 6b on page 3.

**7.** Refer to RoomWizard II installation quickstart guide for remaining assembly.

UNIVERSAL  
BRACKET MOUNT

2

T-NUT

3

c:scape  
RAIL

SLOT

4

5

## Privacy Wall Mount Kit

### Compatibility:

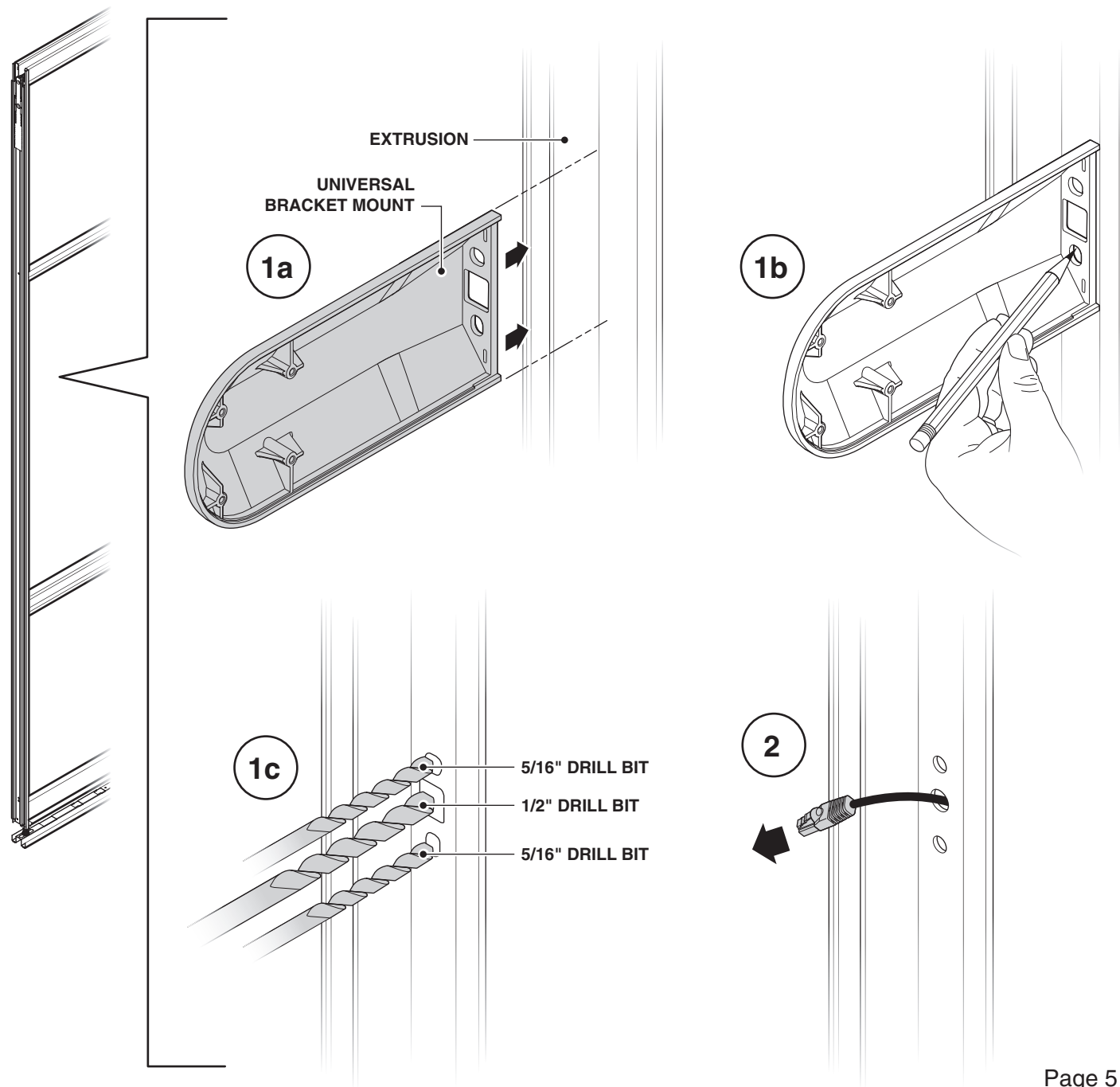
- Mounting applications where there is not enough room for toggle anchor.

**1.** Position universal mount bracket onto extrusion (1a).

Mark two 5/16" holes on extrusion for bracket hardware and one (1) 1/2" hole for power over ethernet cable (1b).

Remove universal bracket mount from extrusion and drill two (2) 5/16" holes for bracket hardware and one (1) 1/2" hole for the power over ethernet cable (1c).

**2.** Route cable through 1/2" drilled hole in extrusion.



**3.** Align universal bracket mount with holes in extrusion and holes in the mounting plate which is positioned on other side of extrusion.

Route power over ethernet cable through "U" shape in the mounting plate, through 1/2" drilled hole in extrusion and then through square hole in bottom of universal bracket mount.

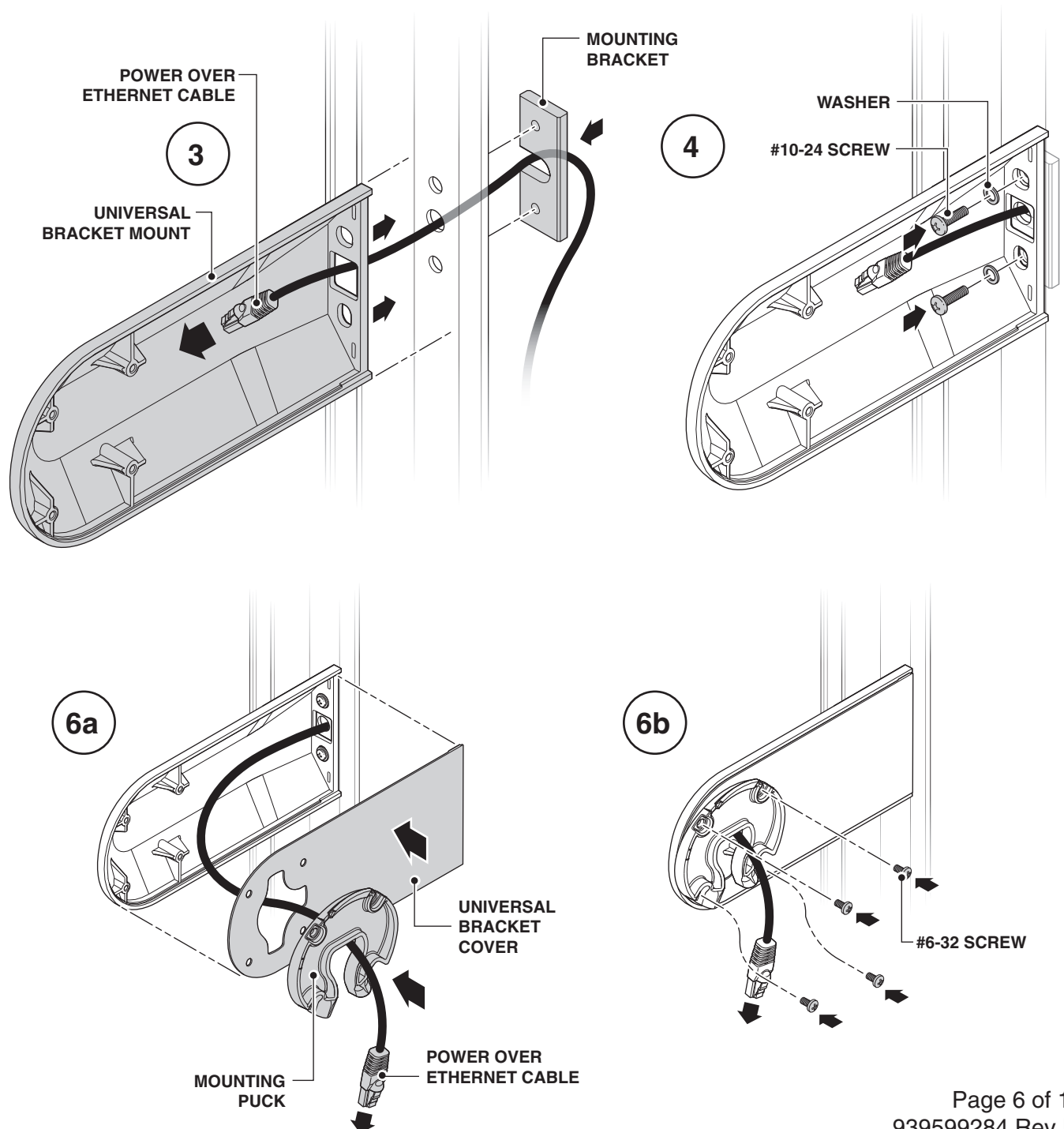
**4.** Attach universal bracket mount to extrusion by inserting two (2) #10-24 screws with washers through holes in universal bracket mount, holes in extrusion and holes in mounting bracket.

**5.** Level RoomWizard II and adjust screws if necessary.

**6.** Align universal bracket and puck with the universal bracket mount. Route power over ethernet cable through universal bracket cover and puck (6a).

Attach universal bracket cover and puck to universal bracket mount using the four (4) provided #6-32 machine screws with a #2 Phillips head screwdriver (6b).

**7.** Refer to RoomWizard II installation quickstart guide for remaining assembly.



## Post and Beam Mount Kit

**Compatibility:**  
•Post and Beam

**1.** Align T-nuts with holes on bottom of universal bracket mount and loosely tighten.

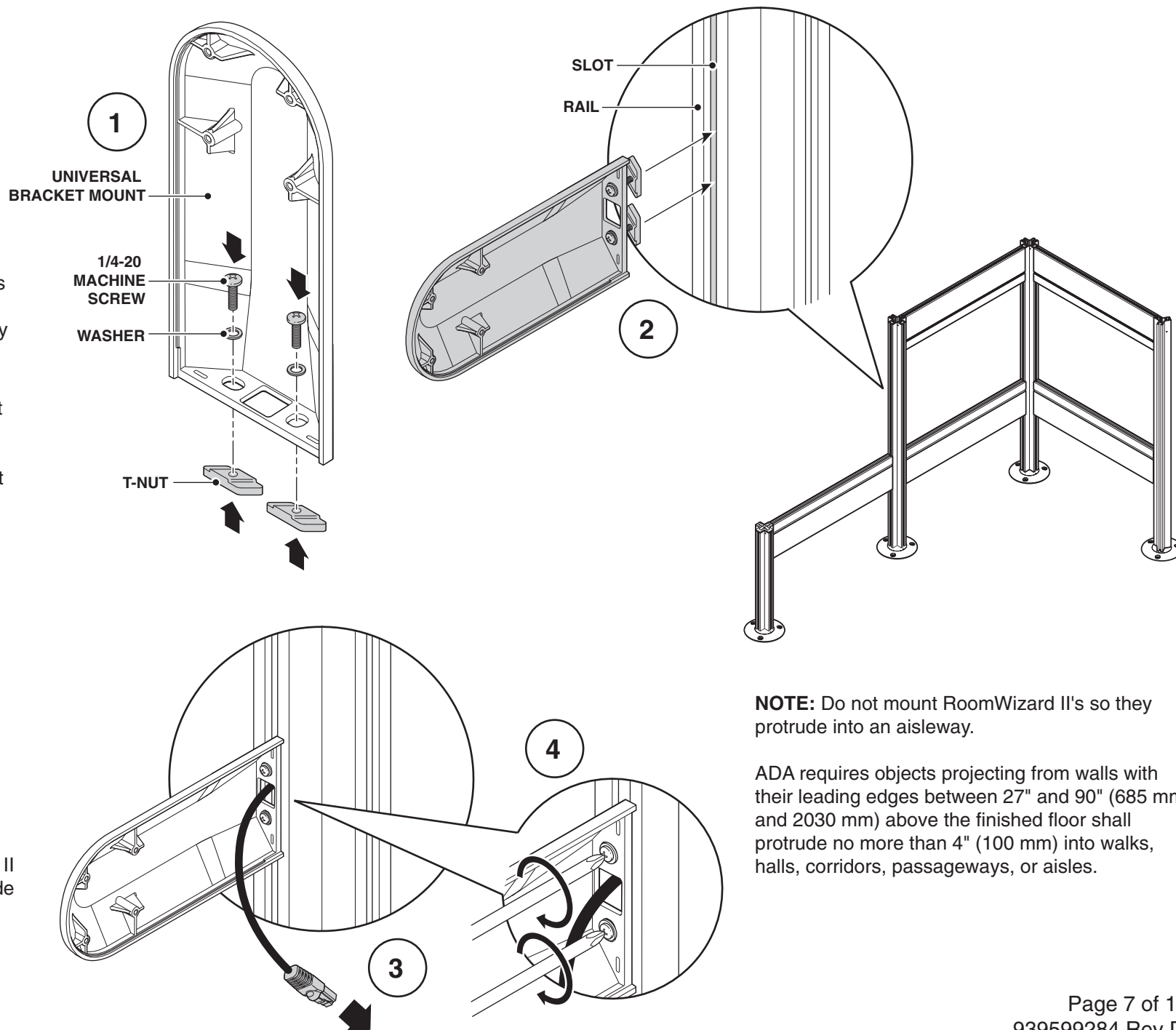
**2.** Place universal mount bracket along with T-nuts onto rail making sure T-nuts are placed into slot on rail.

**3.** Route power over ethernet cable through square hole in bottom of universal bracket mount.

**4.** Tighten the two (2) provided T-nuts using a phillips screwdriver.

**5.** Perform steps 5, 6a and 6b on page 6.

**6.** Refer to RoomWizard II installation quickstart guide for remaining assembly.



**NOTE:** Do not mount RoomWizard II's so they protrude into an aisleway.

ADA requires objects projecting from walls with their leading edges between 27" and 90" (685 mm and 2030 mm) above the finished floor shall protrude no more than 4" (100 mm) into walks, halls, corridors, passageways, or aisles.

## media:scape Mount Kit

### Compatibility:

- media:scape or other structural members.

**1.** Position puck on media:scape a minimum of 52" from floor and mark four (4) locations to drill for fasteners (1a) and one (1) location to drill for cable.

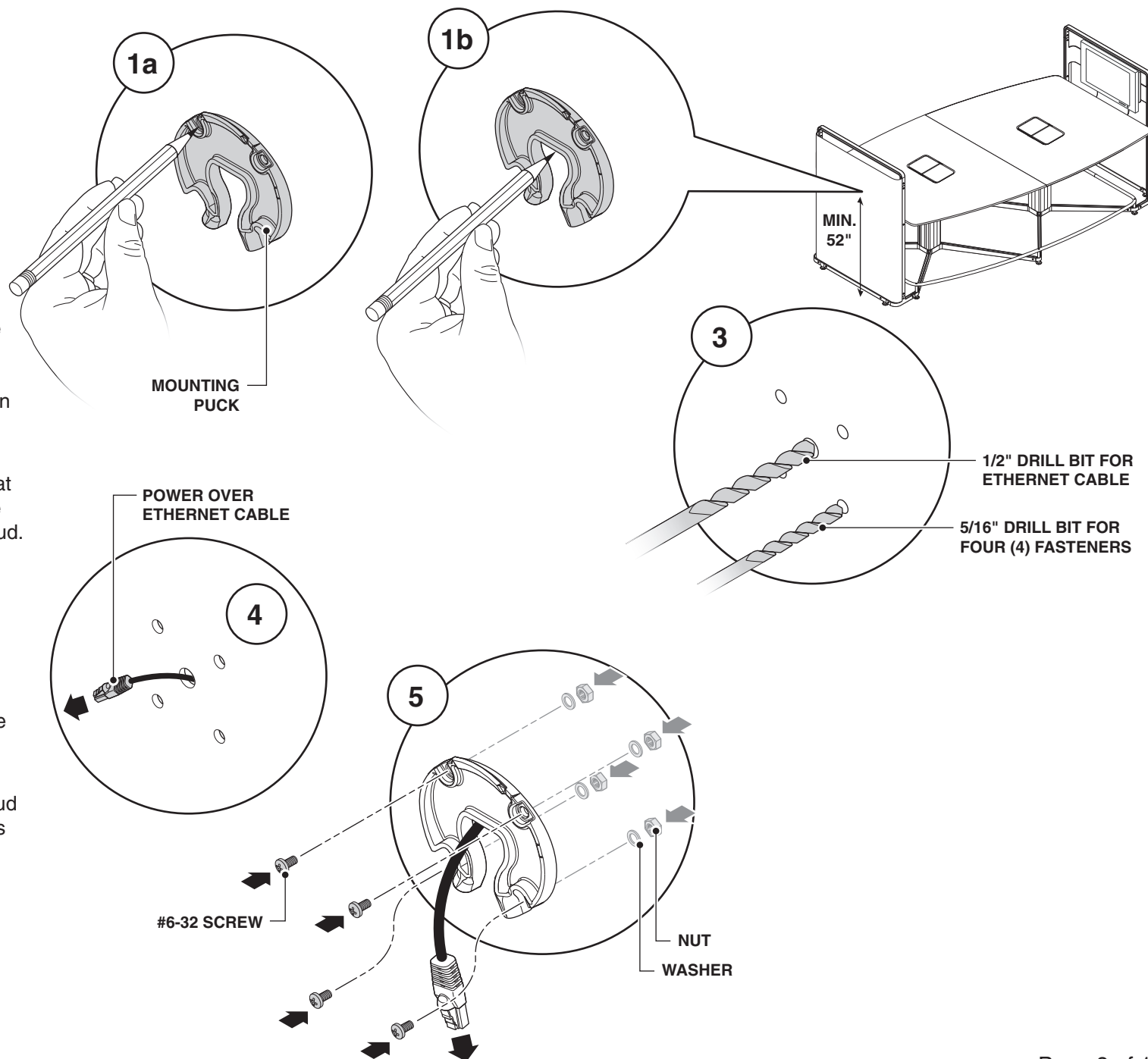
**2.** Confirm there are no items that could pose an interference on the rearside of the media:scape shroud.

**3.** Drill 1/2" dia. hole for power over ethernet cable and 1/4" dia. holes for fasteners.

**4.** Route power over ethernet cable through drilled 1/2" dia. hole in media:scape shroud.

**5.** Screw the puck onto the shroud using the provided four (4) screws and four (4) washers and four (4) nuts.

**6.** Refer to RoomWizard II installation quickstart guide for remaining assembly.



## Single Gang Junction Box Mount Kit

### Compatibility:

- Single gang junction box.

**1.** Route power over ethernet cable through mounting plate.

**2.** Attach mounting plate directly to junction box. If box is vertical, mount so the puck mounting holes are toward the top of the mount.

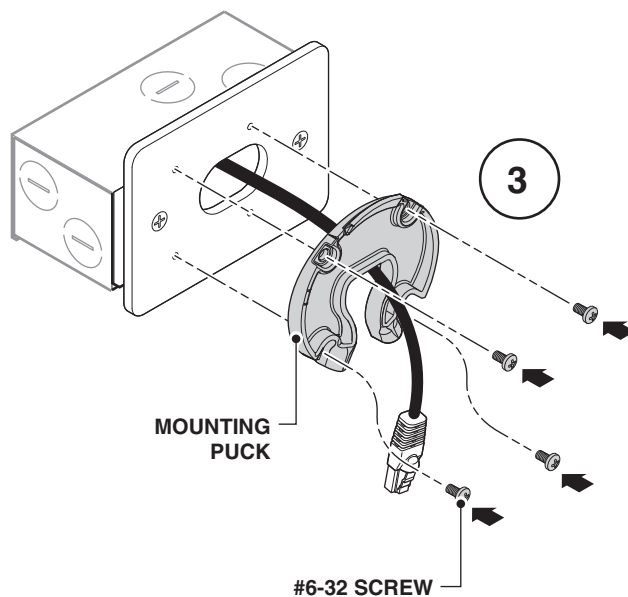
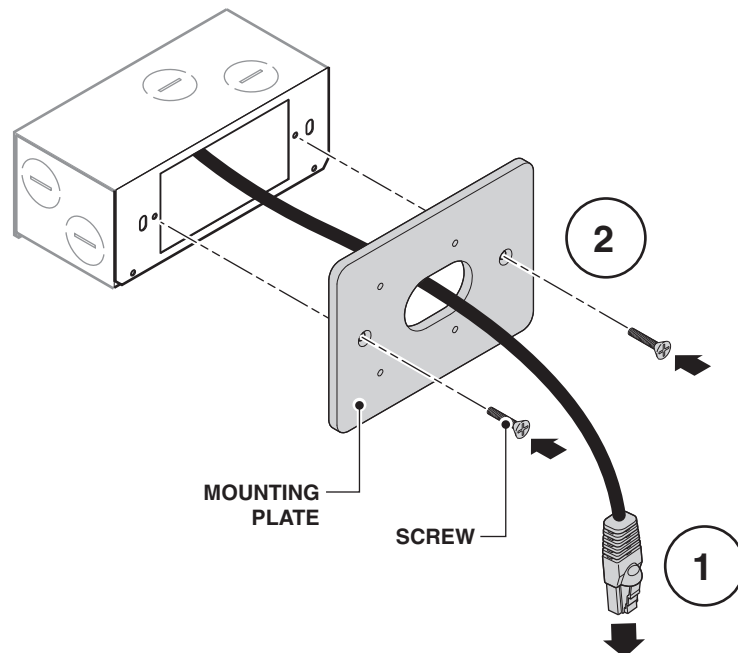
If the box is horizontal, mount so the puck mounting holes are nearest the room opening.

**3.** Attach RoomWizard II to puck using two (2) provided set screws with a #2 phillips screwdriver.

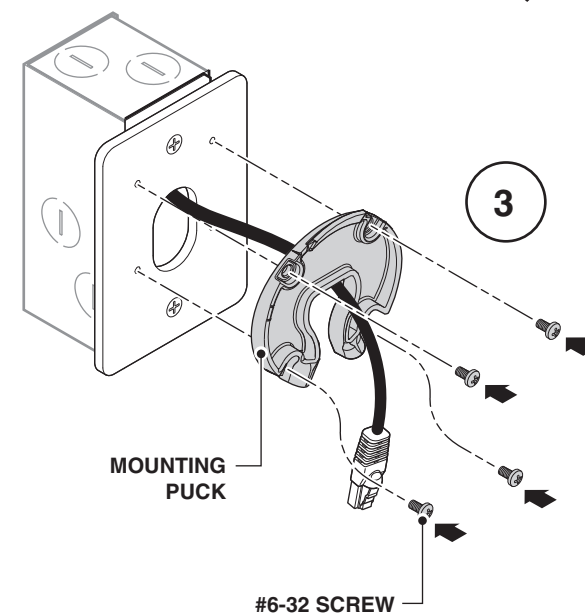
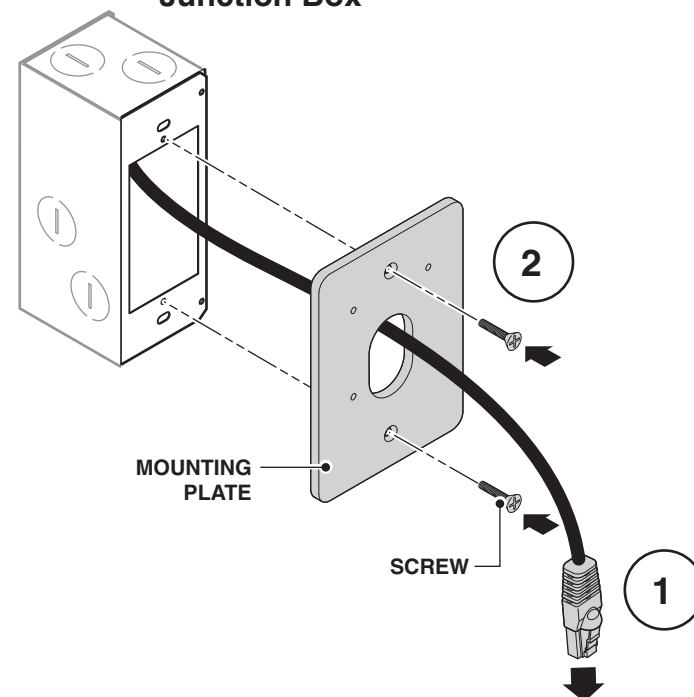
**4.** Level RoomWizard II. Adjust screws if necessary

**5.** Refer to RoomWizard II installation quickstart guide for remaining assembly.

### Horizontal Junction Box

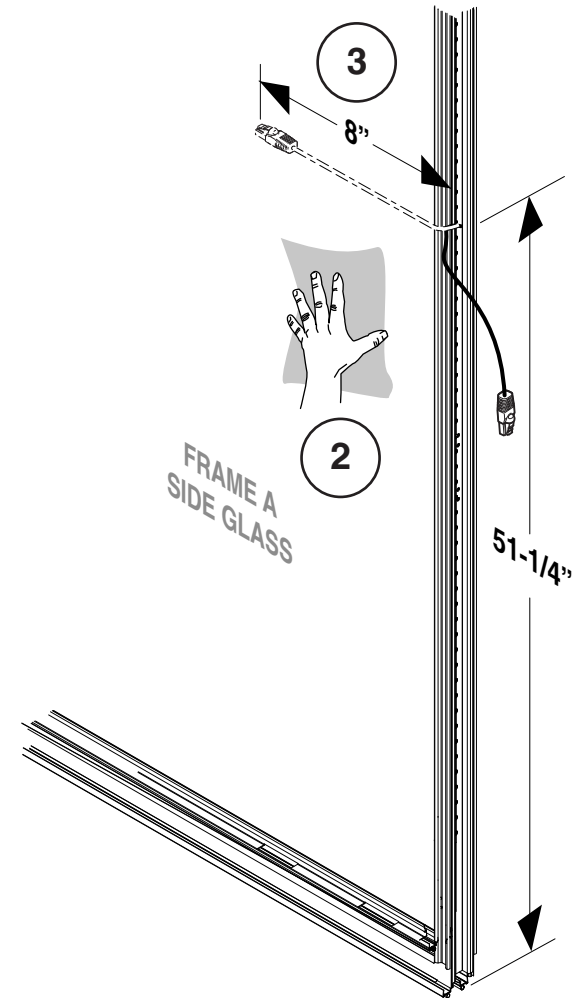
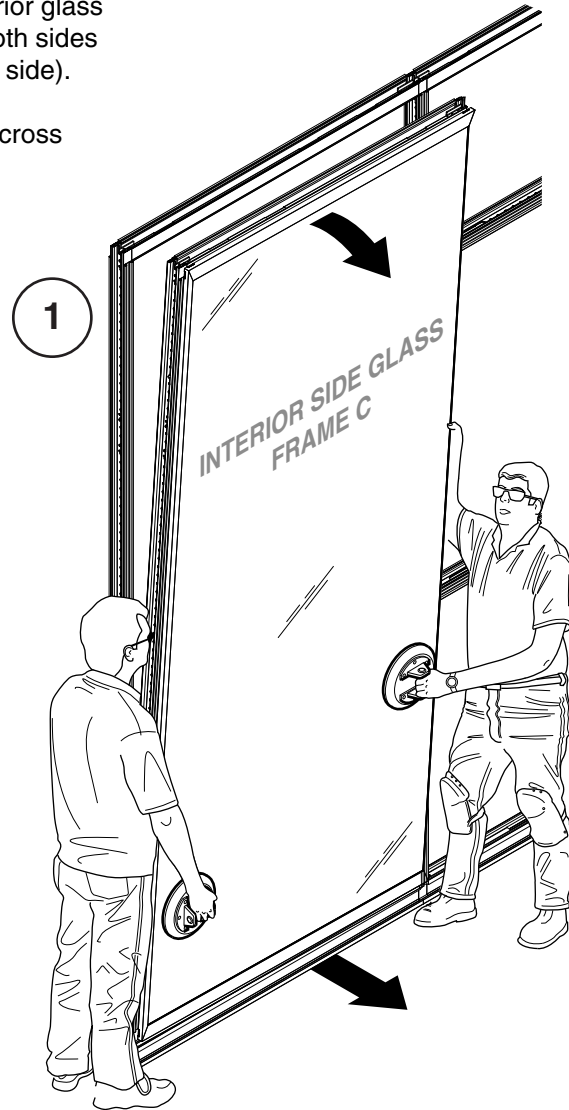


### Vertical Junction Box



## INSTALLATION OF VIA

1. Unlock Lock rods for interior glass frame (C) and remove.
2. Clean mounting area of exterior glass frame (A) with alcohol pad on both sides (54-1/4" up from floor, 8" in from side).
3. Maintain cable length at 8" across face of glass frame.



## INSTALLATION OF VIA GLASS MOUNT

**3.** Route cable through VIA mount cover and mount. Secure cable to cable retainer clip.

**4.** Engage cover spur into mount and pivot to align mounting holes. Route cable through opening in mount.

**NOTE:** Adhesive pad must adhere directly to glass.

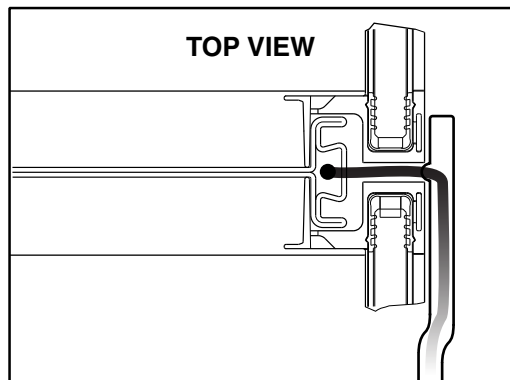
**5.** If desired mounting location has vinyl film applied to glass, carefully cut a 76 mm diameter circle through the vinyl with an X'acto type blade. Remove the film from cutout area. Clean the exposed glass surface with an alcohol pad.

**6.** Remove film backing from adhesive pad. Locate alignment tabs against edge of glass frame and press VIA mount onto glass. VIA Mount will be centered at 51-1/4" H.

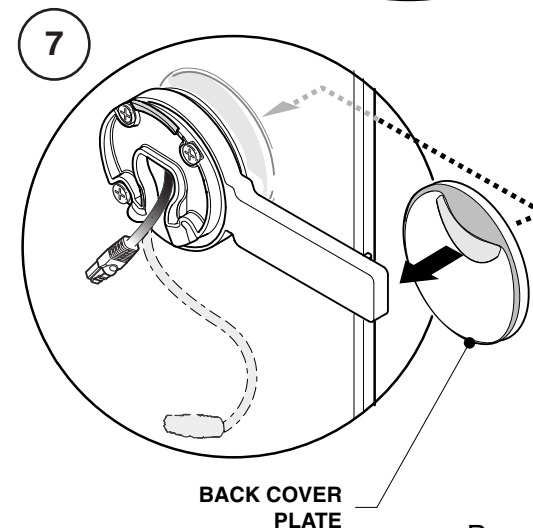
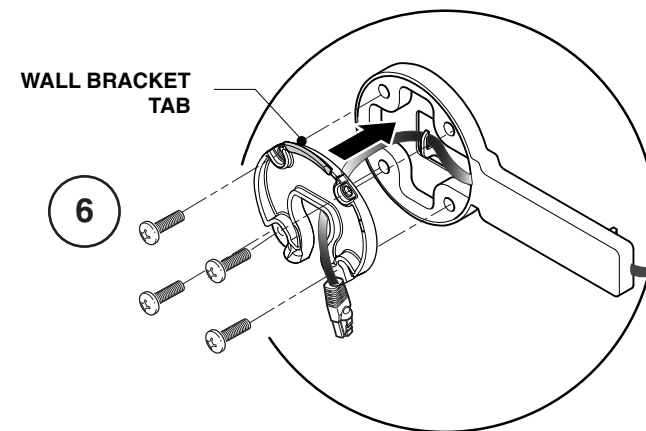
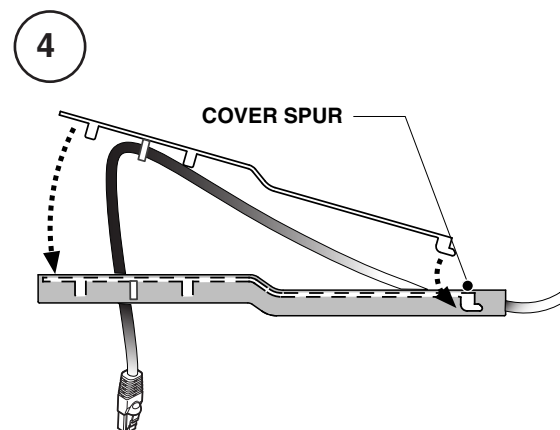
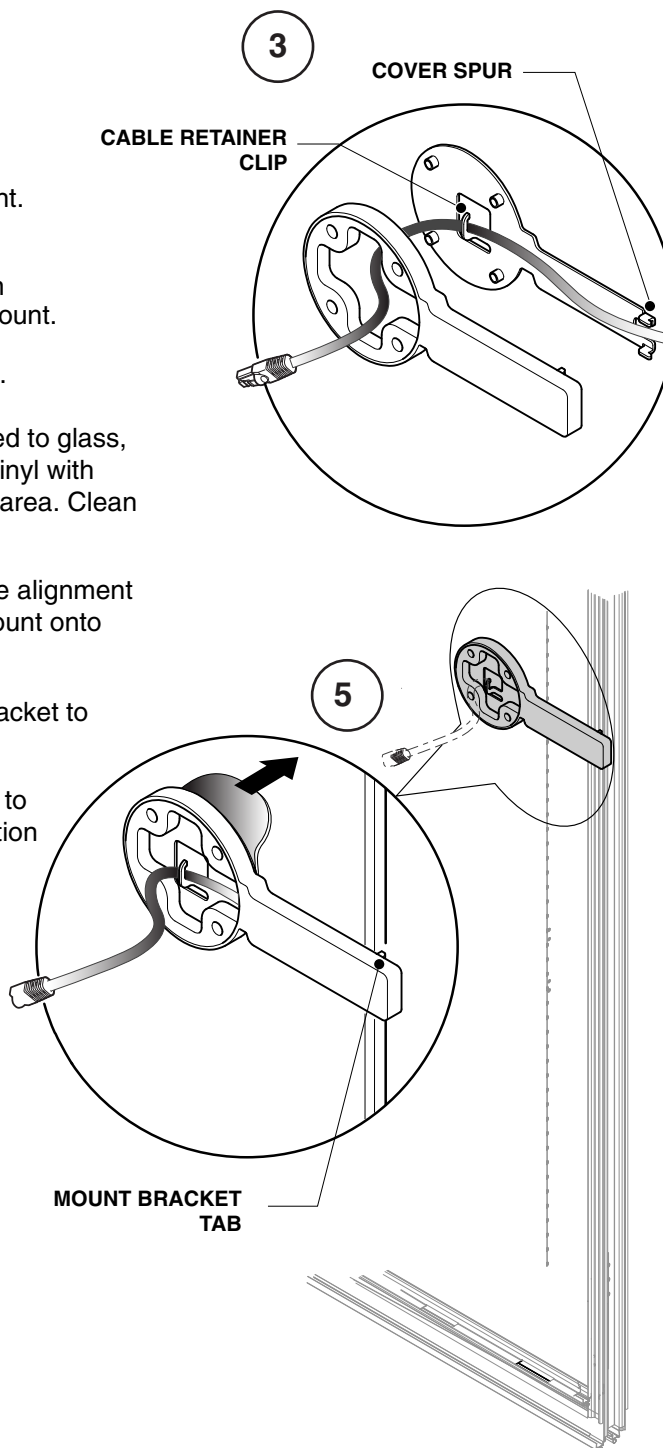
**7.** Position tab of wall bracket at top and fasten bracket to mount with (4) fasteners.

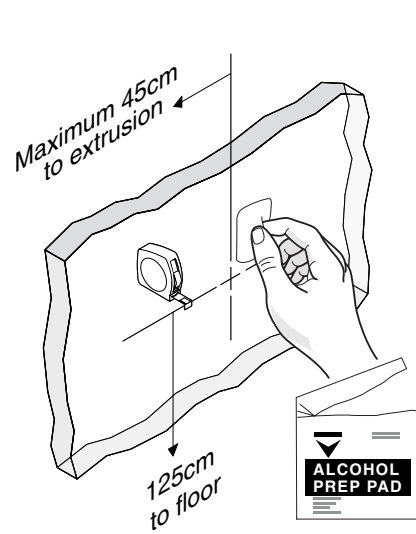
**8.** Remove film backing and affix back cover plate to opposite of glass. Refer to Room Wizard II Installation *Quick Start Guide* for remaining assembly.

**9.** Reinstall interior glass frame and lock in place using lock rods.

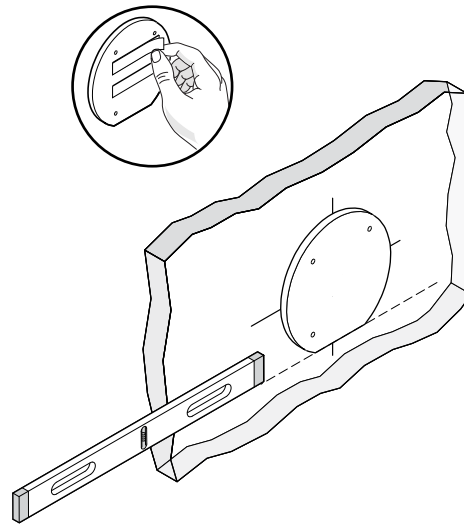


Extra cable can be managed by filling openings.

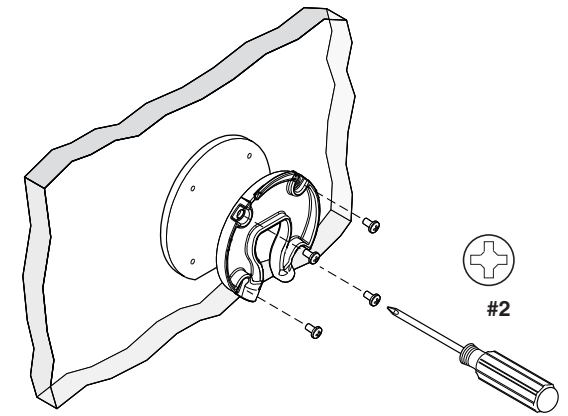




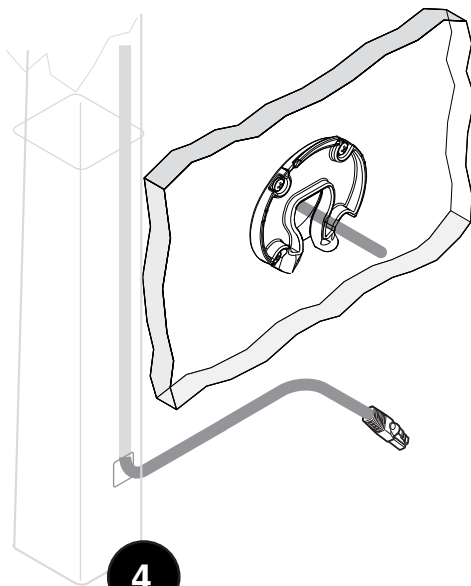
1



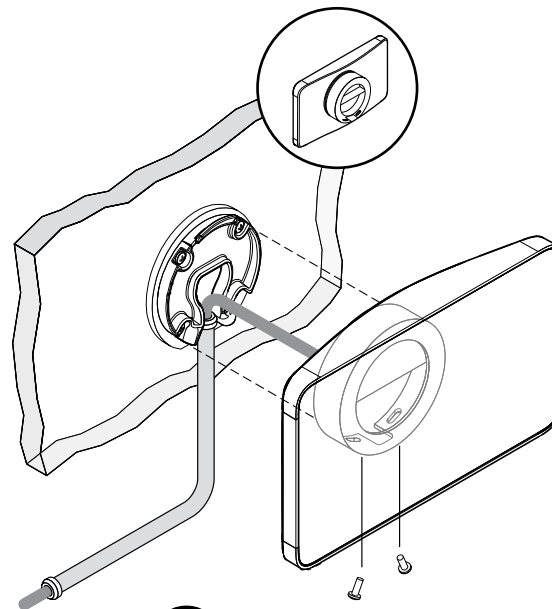
2



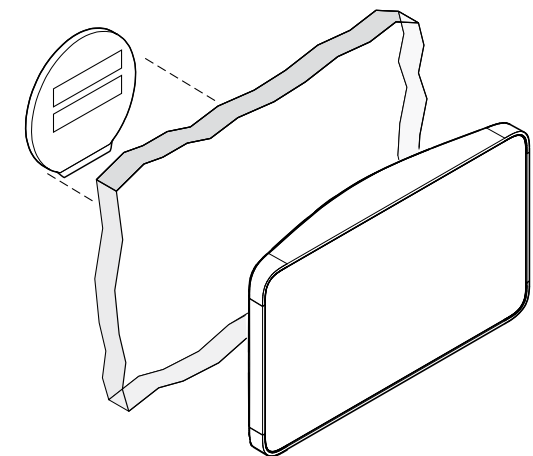
3



4



5



6