

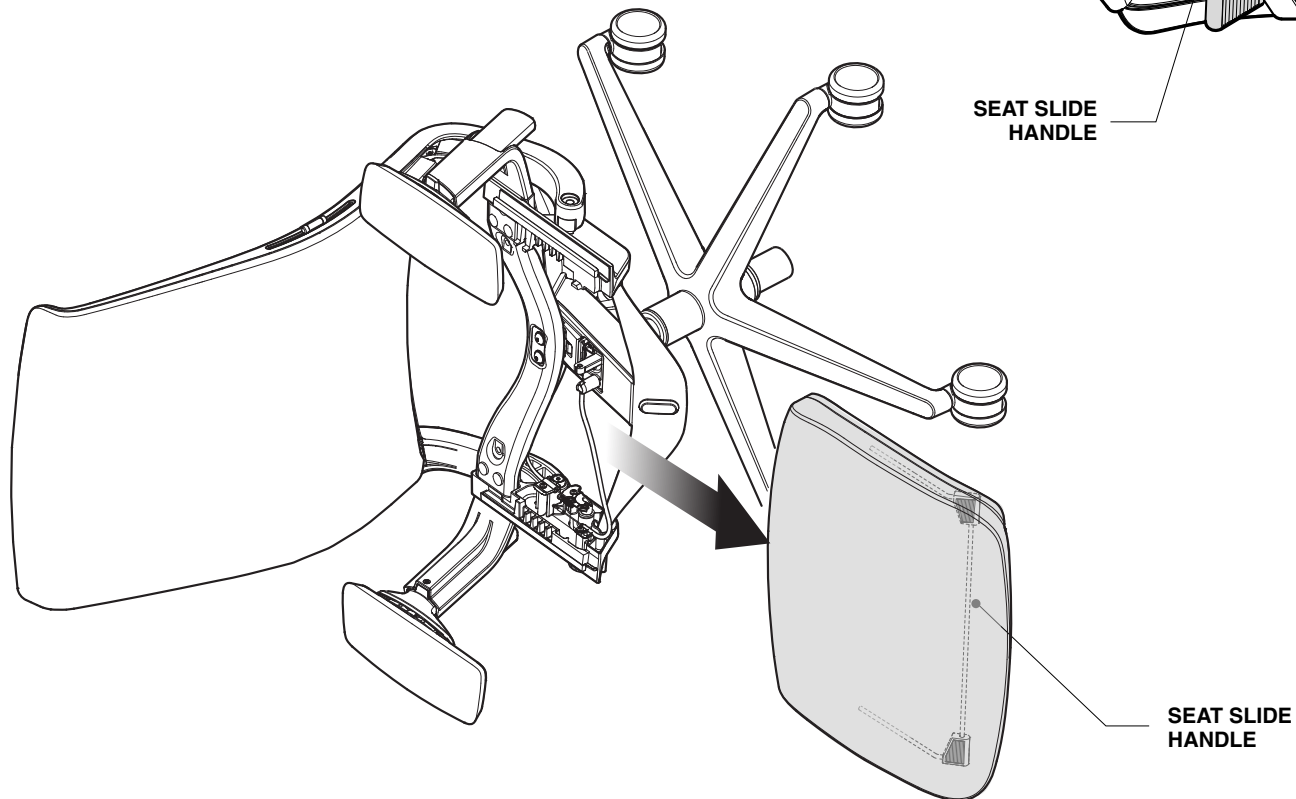
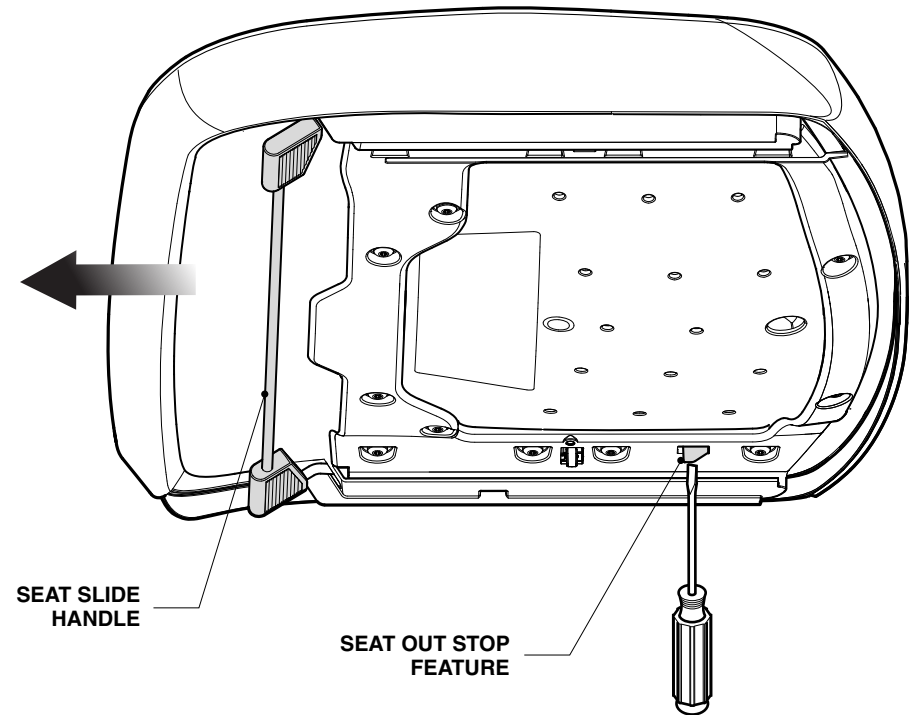
If you have a problem, question, or request, call your local dealer, or Steelcase Line 1 at **888.STEELCASE** (888.783.3522) for immediate action by people who want to help you.

(Outside the U.S.A., Canada, Mexico, Puerto Rico, and the U.S. Virgin Islands, call: 1.616.247.2500)
Or visit our website: www.steelcase.com

© 2014 Steelcase Inc.
Grand Rapids, MI 49501
U.S.A.

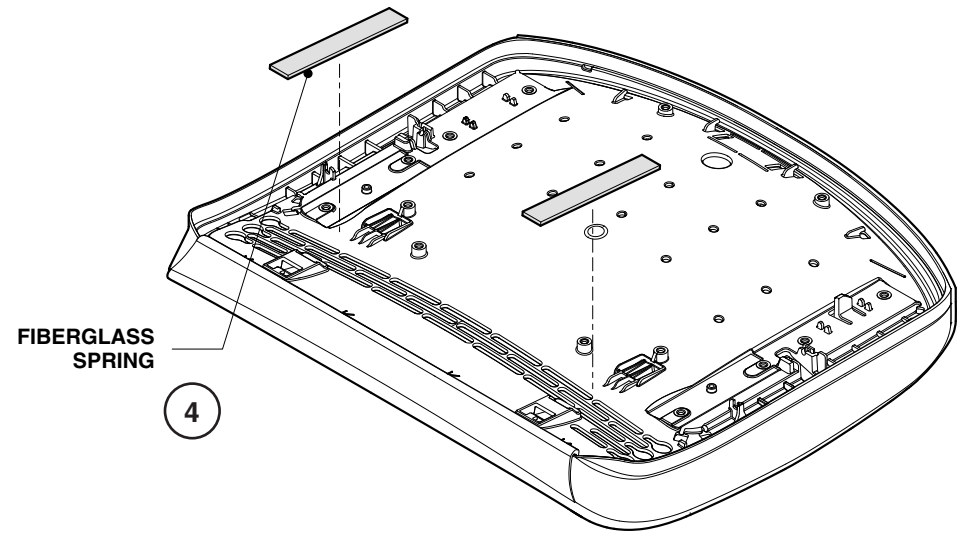
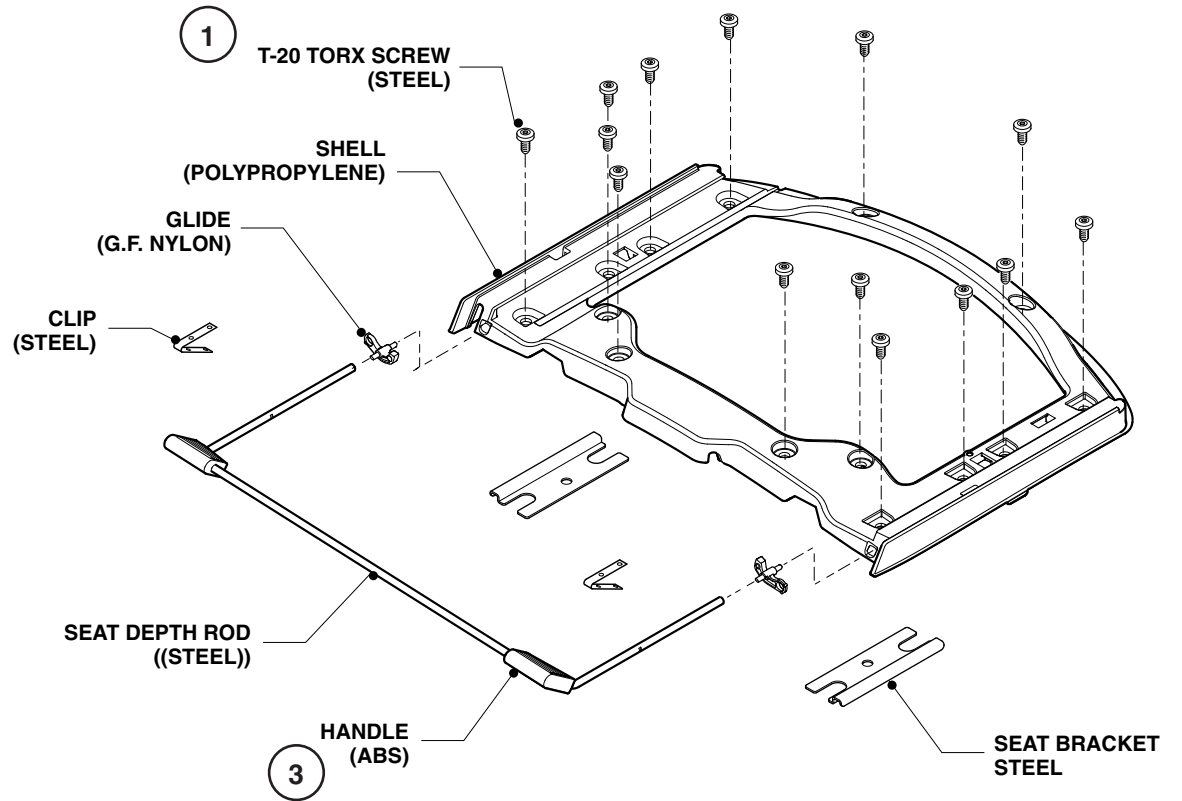
Printed in U.S.A.

- 1.** Press seat slide handle (at front of seat) and pull seat as far forward as it will go.
- 2.** Tip the chair onto its right side.
- 3.** Locate the seat out stop feature.
- 4.** Insert a screwdriver below the out stop feature and push it (up) toward the seat.
- 5.** Simultaneously press the seat slide handle and pull forward on the seat.



Seat Disassembly

1. Remove (14) T-20 Torx screws (steel).
2. Separate loose parts.
3. Insert a flat blade screwdriver into square slot on the backside of handles, pry handles (ABS) apart to separate them from seat depth lever rod (steel).
4. Carefully remove fiberglass springs (scrap) from cushion by lifting loose end and pulling other end out of pocket.



Bins for components removed			
Steel	ABS/Nylon	Polypropylene	Scrap
(14) (2) (1)	(2) (2) (2)	(1)	(2)

Cushion Disassembly

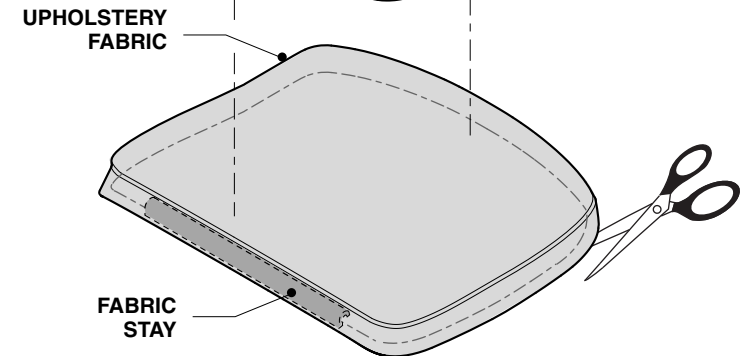
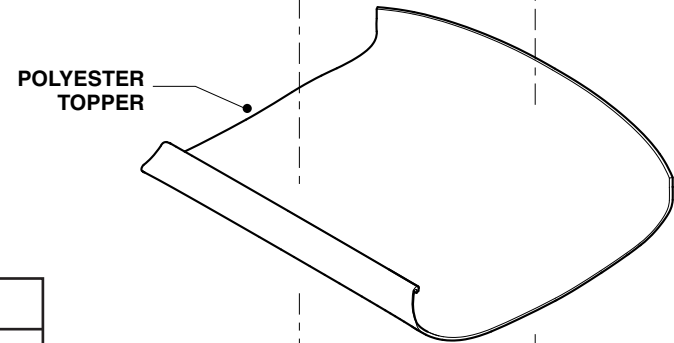
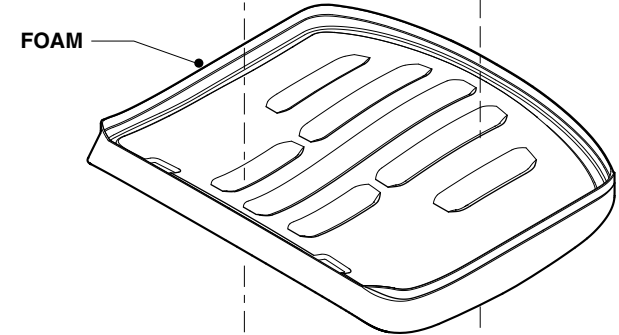
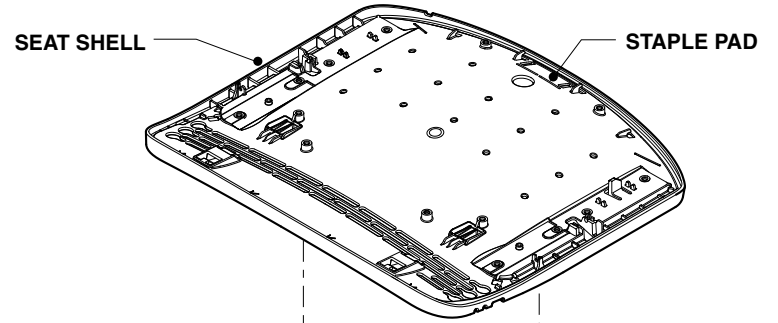
1. Using a flat blade screwdriver, pry out staple pad in back end of cushion.

2. Remove upholstery fabric from cushion. Using a pair of scissors, carefully cut staple pad (**scrap**) and fabric stay (**scrap**) out of fabric (**fabric**).

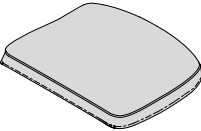
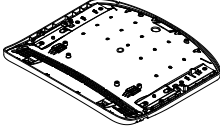

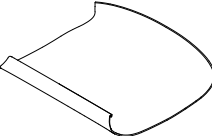
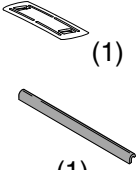
NOTE: Fabric cover with drawstring has a stay sewn across its front edge. The stay will need to be trimmed out and scrapped.

3. Take seat shell (**polypropylene**) out of cushion.

4. Gently peel apart topper foam (polyester) and seat foam (**polyurethane foam**).



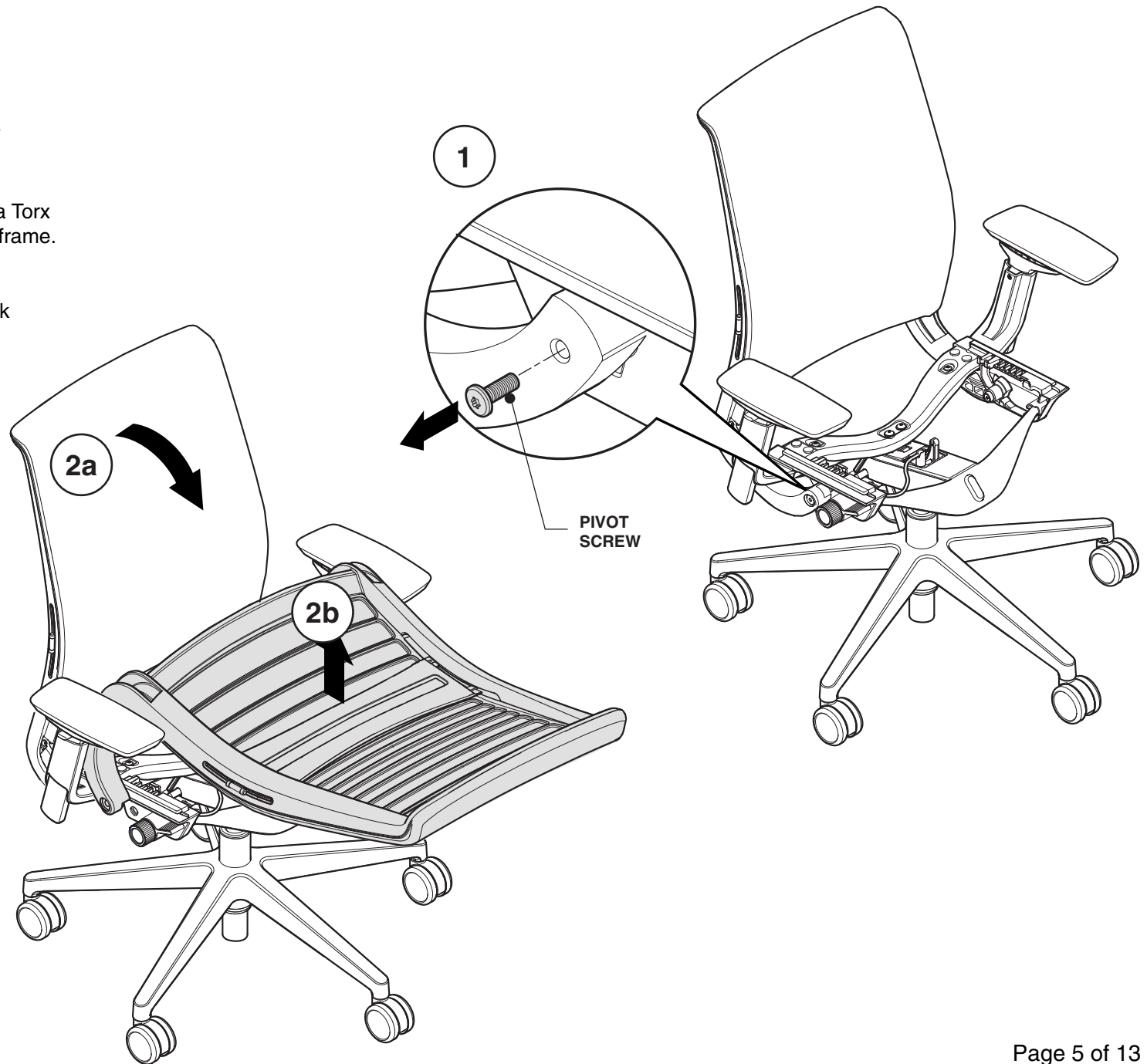
Bins for components removed

Fabric	Polypropylene	Polyurethane	Polyester	Scrap
 (1)	 (1)	 (1)	 (1)	 (1) (1)

Removal of Back Assembly

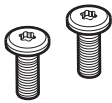
1. Remove pivot screws (**steel**) with a Torx T-30 driver, on both sides of the back frame.

2. Holding onto the bottom of the back frame, rotate back frame and slide off the backstops (2a). Remove back (2b).



Bins for components removed

Steel

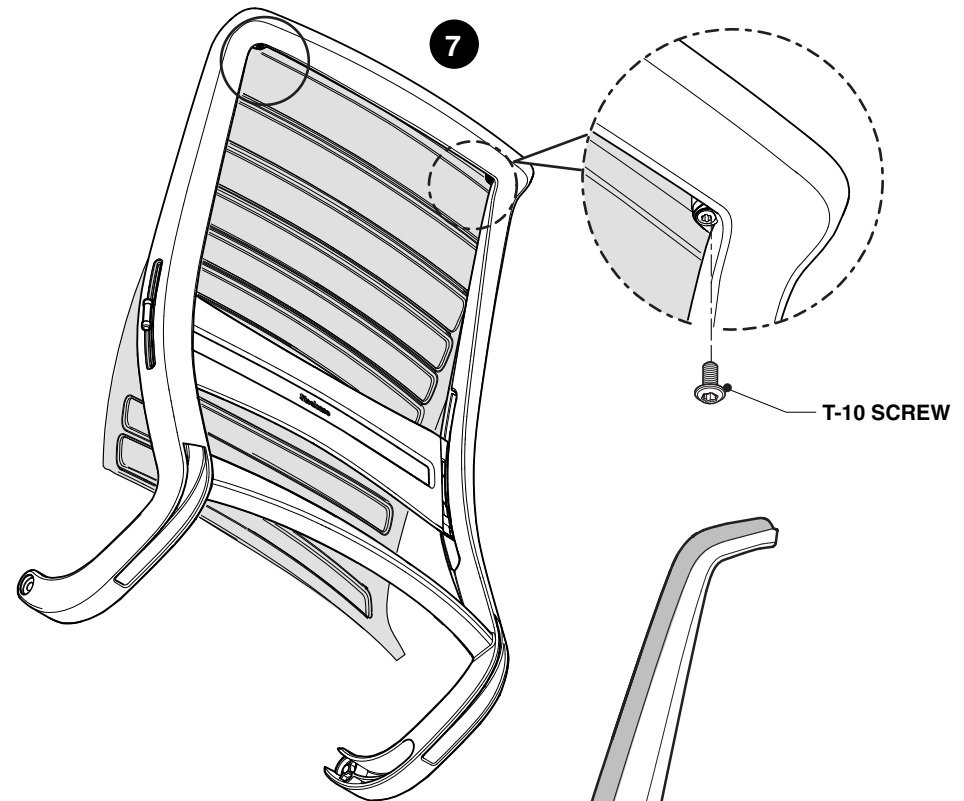
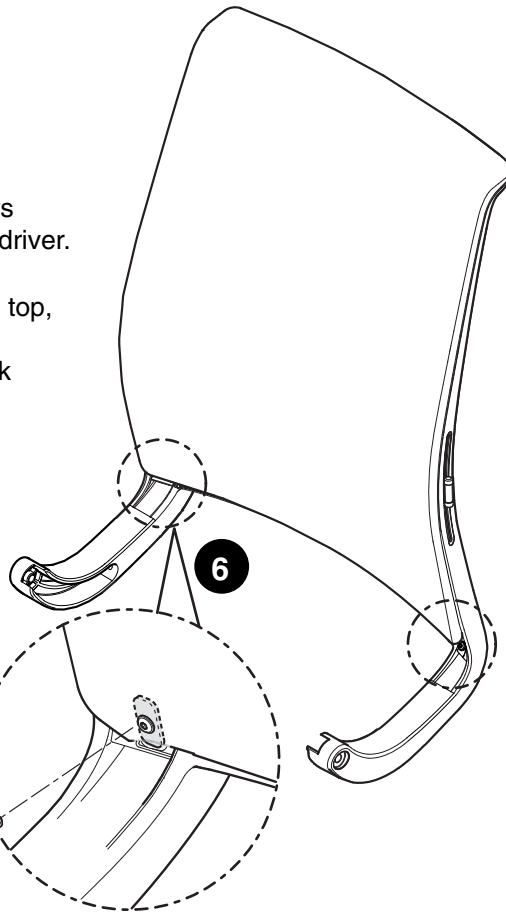


(2)

6. Remove the, (2) lower back screws (steel) by inserting a T-20 Torx screwdriver.

7. Remove 2 screws (steel) from the top, back of the cushion with a Torx T-10 screwdriver. Disengage center of back cushion from lower back frame. First, push inward at center (7a) then lift up on bottom of cushion (7b). Once unhooked, remove cushion.

T-20 SCREW



LOWER CROSS BAR

CUSHION

7a

7b

Bins for components removed

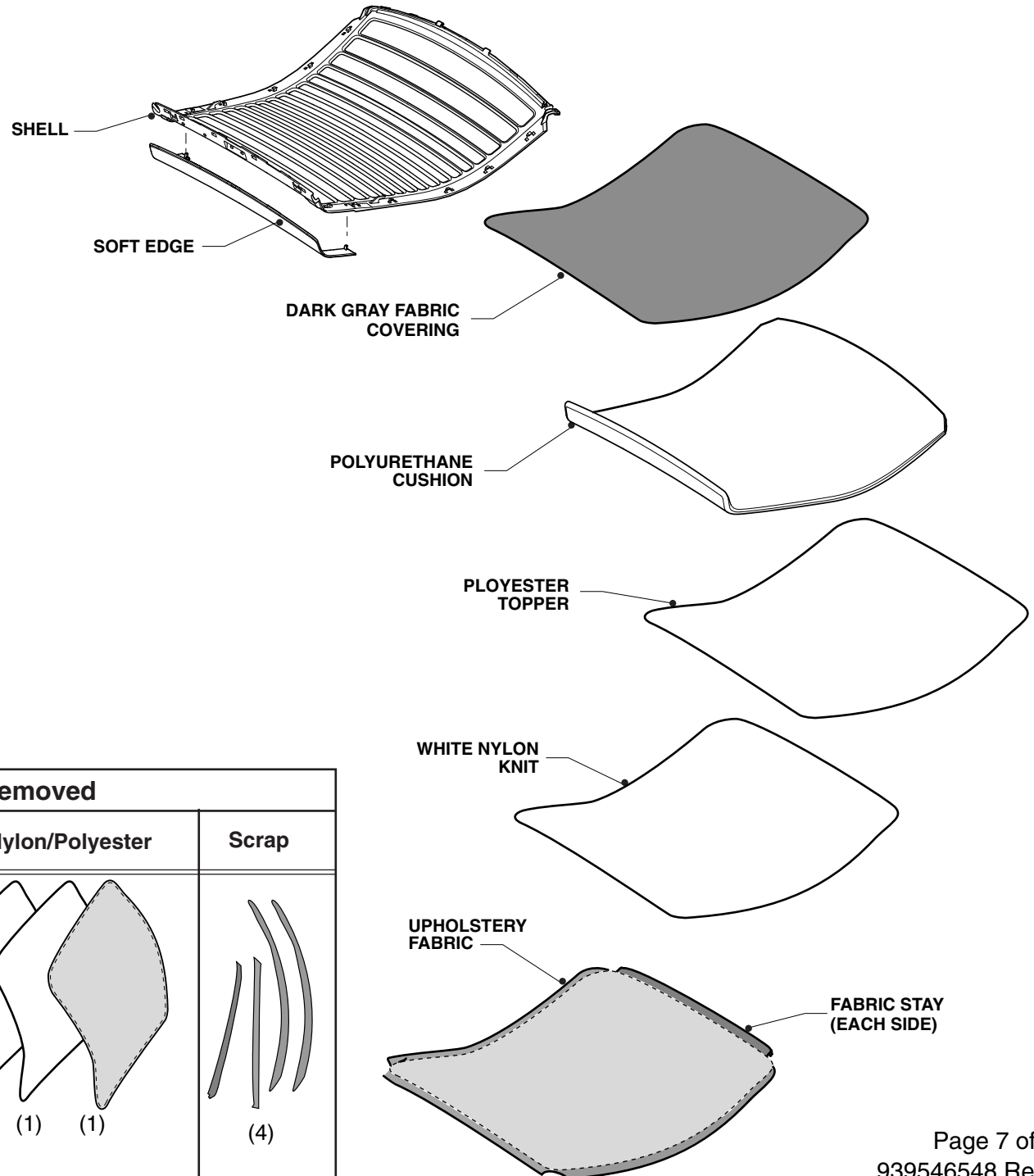
Steel



(4)

8. Unsnap and peel upholstery fabric free from back shell. Use scissors to trim fabric stay from upholstery at each side.

9. Pull dark gray fabric from back. Separate cushion, topper and white nylon knit material.



Bins for components removed			
Polypropylene	Polyurethane	Fabric/Nylon/Polyester	Scrap
<p>(1) (1)</p>	<p>(1)</p>	<p>(1) (1) (1) (1)</p>	<p>(4)</p>

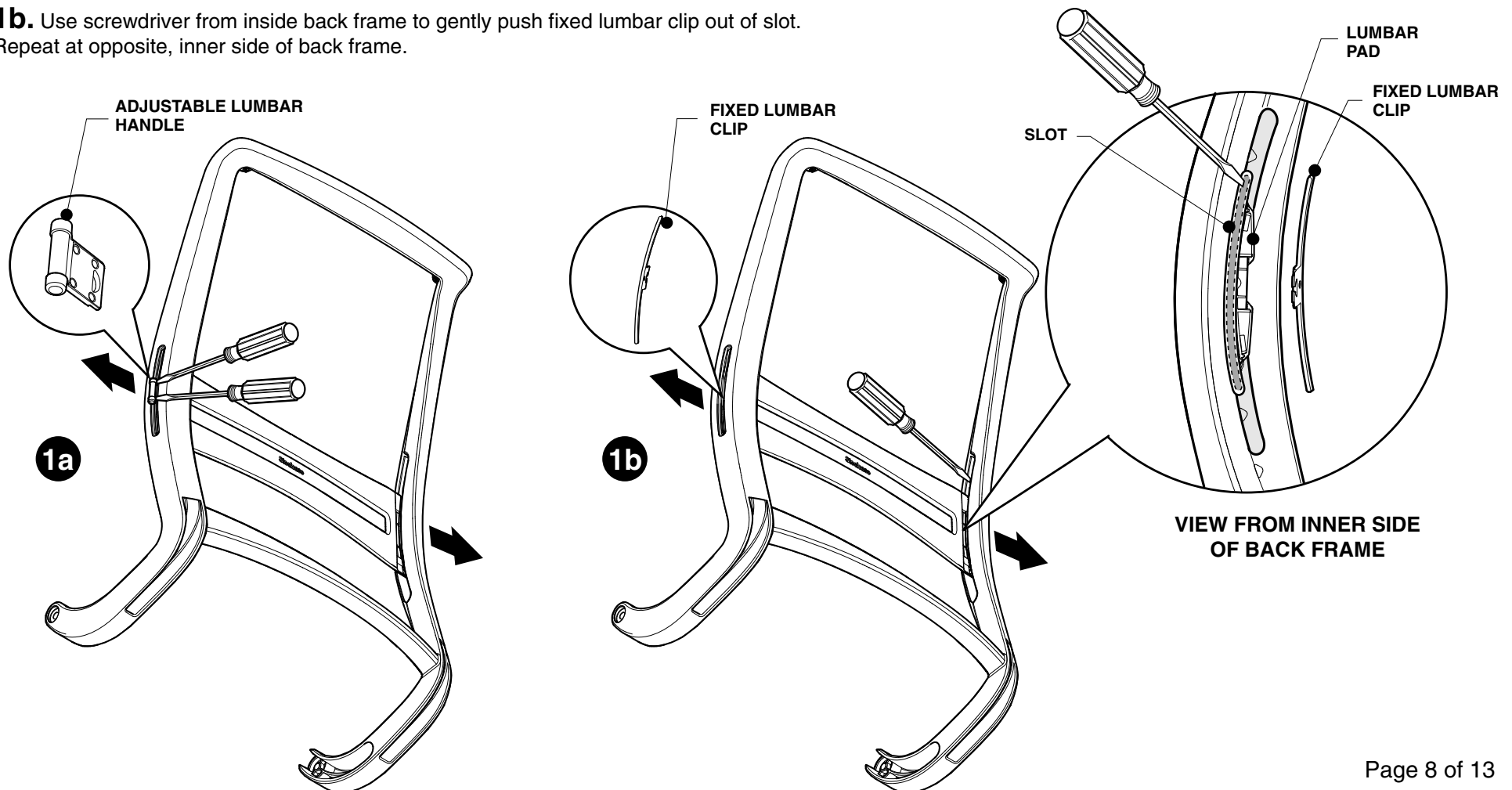
Removal of Lumbar Assembly

Adjustable Lumbar

1a. Using two (2) screwdrivers, gently pry out the lumbar handles on **both** sides of the back.

Fixed Lumbar

1b. Use screwdriver from inside back frame to gently push fixed lumbar clip out of slot.
Repeat at opposite, inner side of back frame.

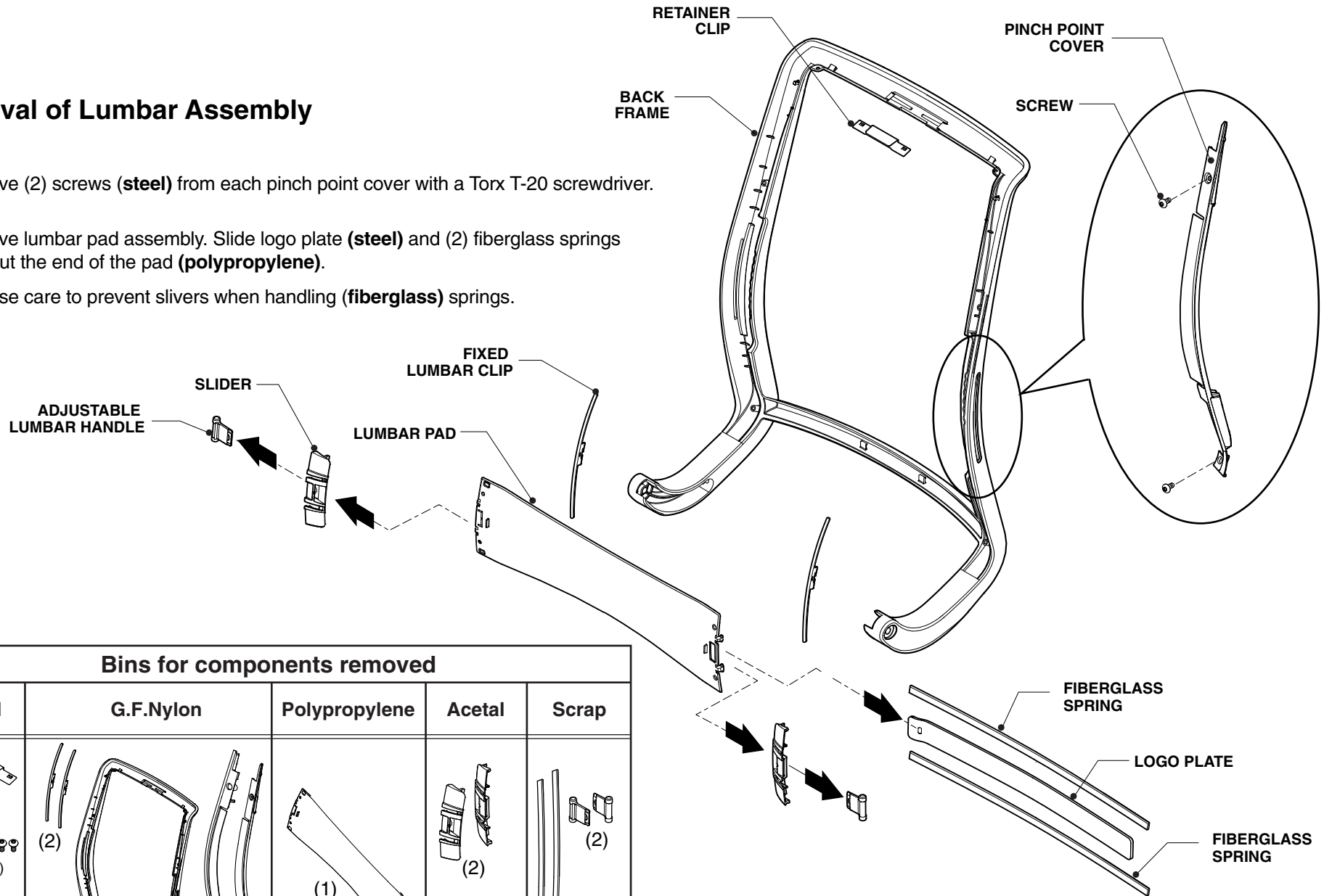


Removal of Lumbar Assembly

2. Remove (2) screws (**steel**) from each pinch point cover with a Torx T-20 screwdriver.

3. Remove lumbar pad assembly. Slide logo plate (**steel**) and (2) fiberglass springs (**scrap**) out the end of the pad (**polypropylene**).

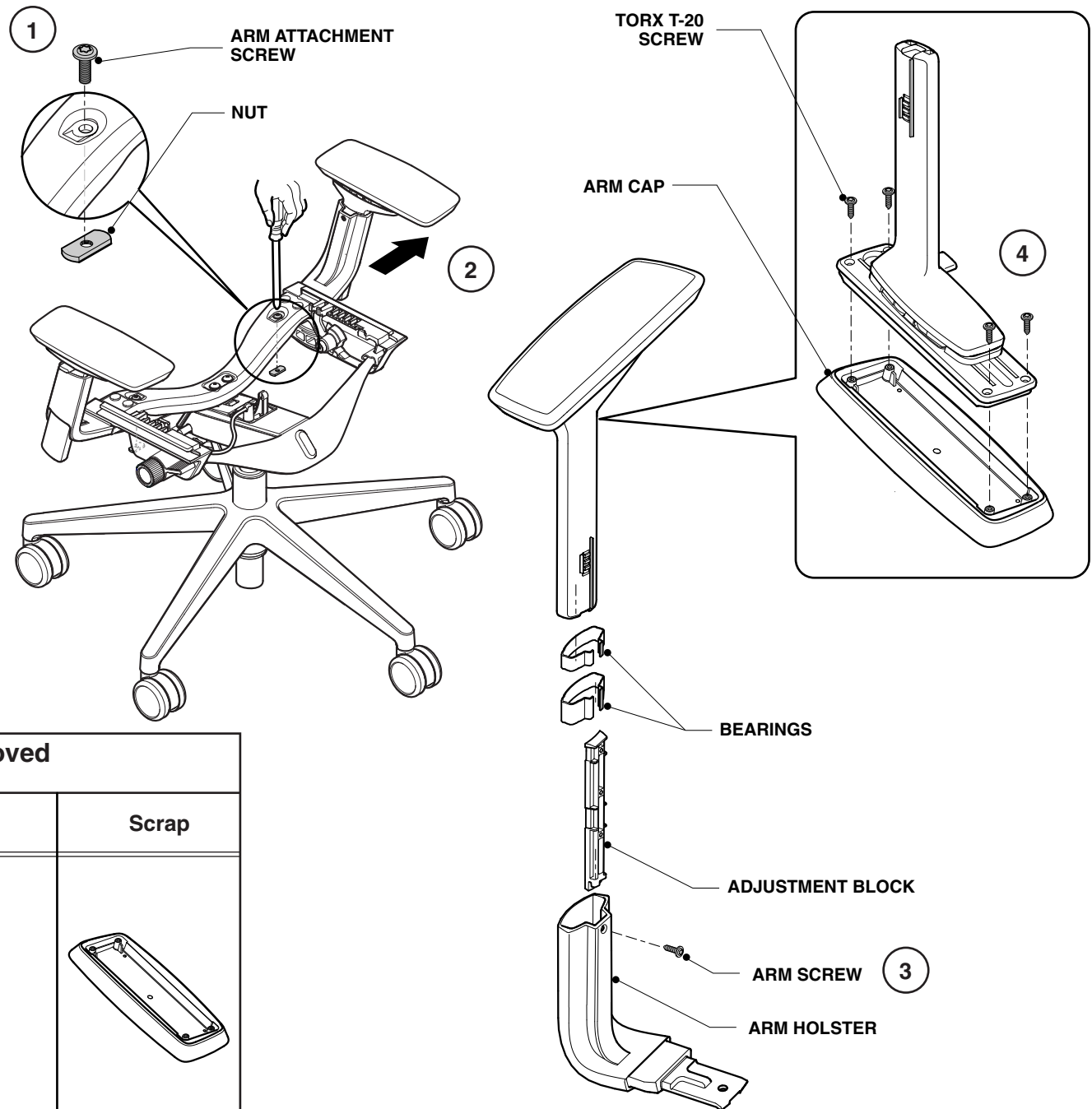
NOTE: Use care to prevent slivers when handling (**fiberglass**) springs.



Bins for components removed				
Steel	G.F.Nylon	Polypropylene	Acetal	Scrap
<p>(1) (4) (1)</p>	<p>(2) (1) (2)</p>	<p>(1)</p>	<p>(2)</p>	<p>(2)</p>

Removal of Arms

1. Remove arm attachment screw (**steel**) and nut (**steel**) with Torx T-30 screwdriver.
2. Slide arm assembly out of the seat rail.
3. Remove arm screw with Torx T-20 screwdriver and lift components out of arm support. Separate parts: adjustment block (**nylon**), arm holster (**nylon**), and bearings (**acetal**).
4. Flip arm cap over and remove (4) Torx T-20 screws (**steel**). Remove arm cap (**scrap**) from arm assembly.
5. Repeat steps 1-4 for other arm.



Bins for components removed

Steel	Nylon	Acetal	Scrap
<p>(2)</p> <p>(2)</p>	<p>(1)</p>	<p>(2)</p>	
<p>(5)</p>	<p>(1)</p>		

Disassembly of Arms

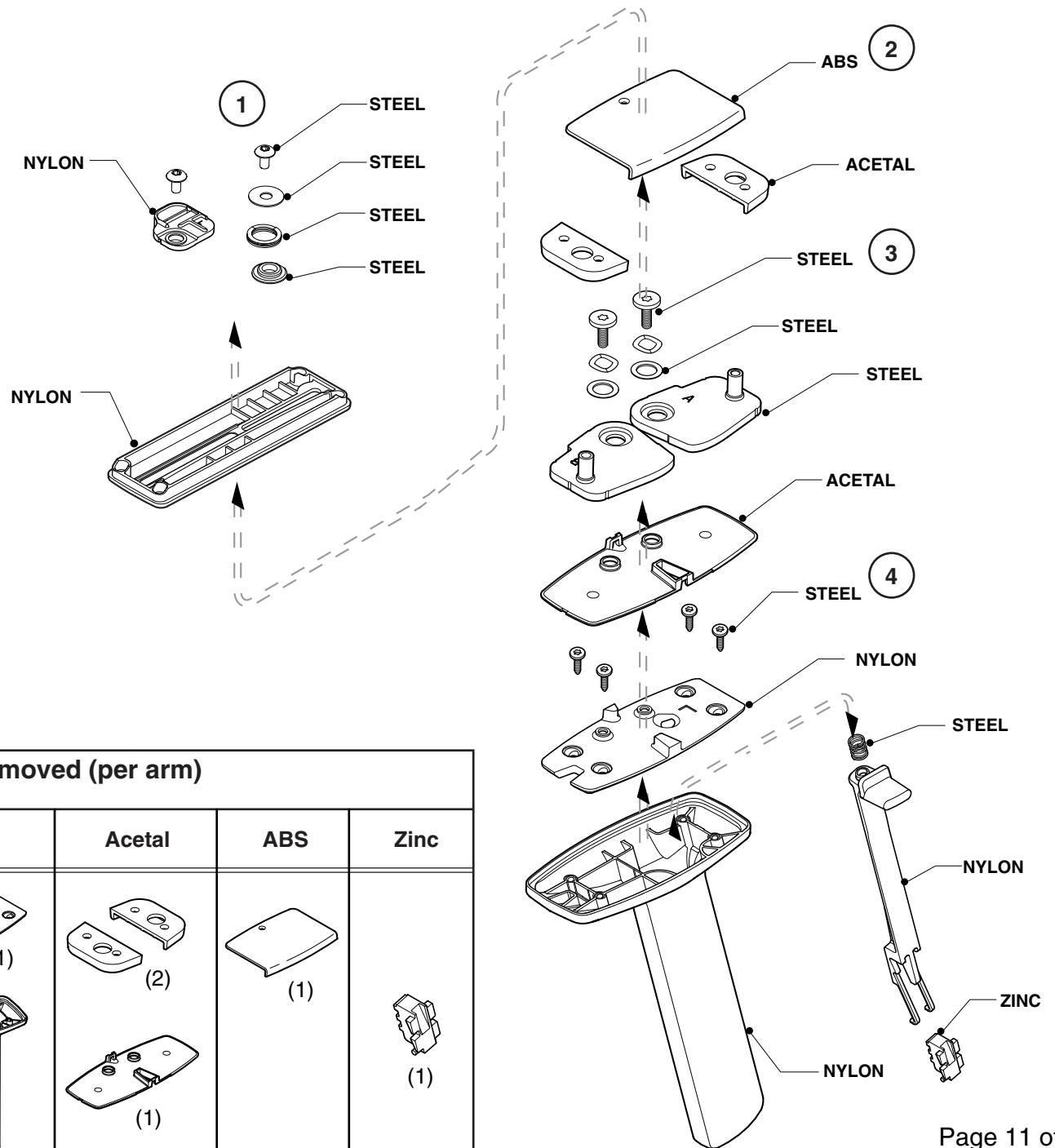
Separate and sort items to bins shown below.

1. Remove (2) screws (**steel**) with Torx T-20 screwdriver.

2. Pry up on bottom of cover to un-snap.

3. Remove (2) screws (**steel**) with Torx T-25 screwdriver.

4. Remove (4) screws (**steel**) with Torx T-20 screwdriver.



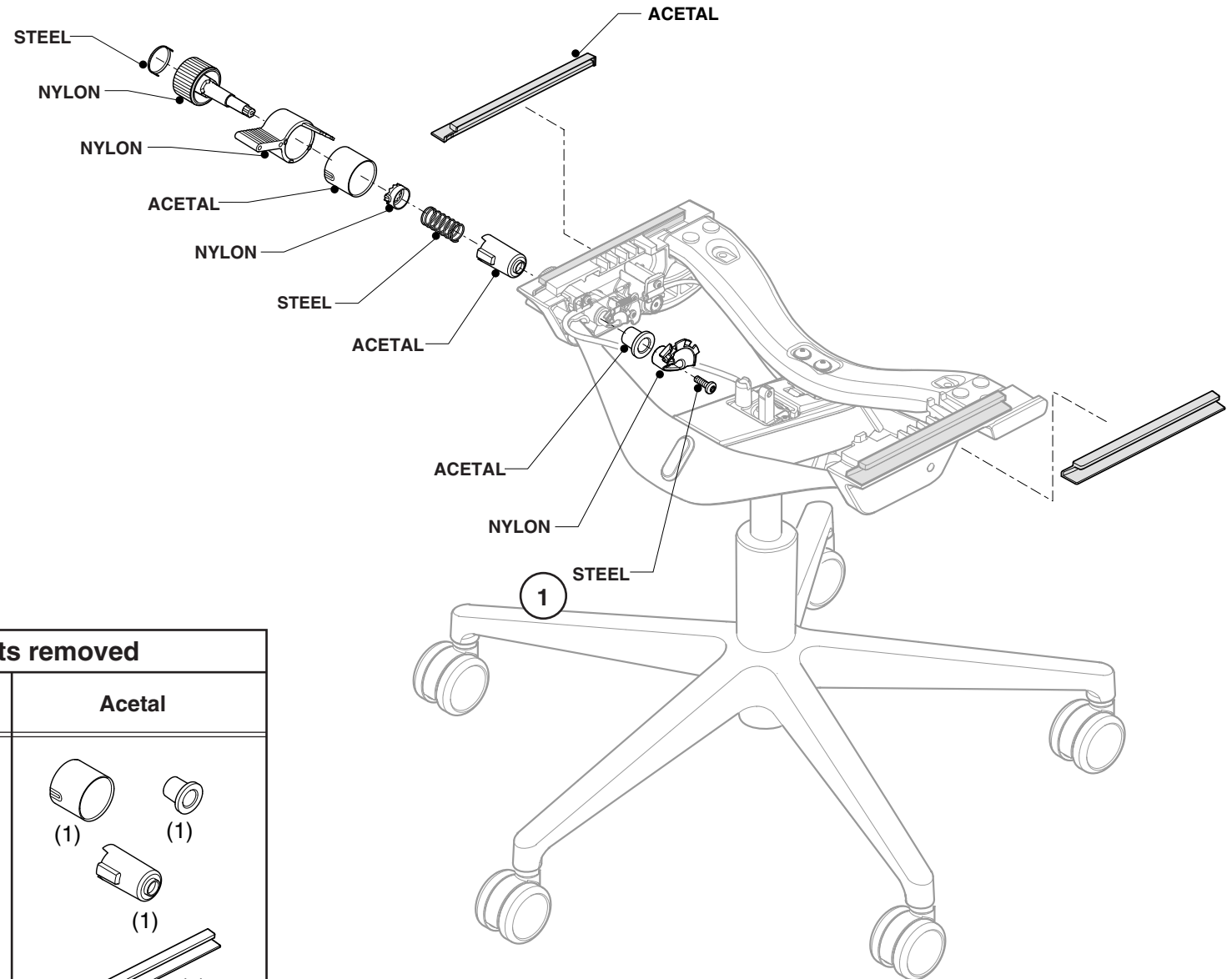
Bins for components removed (per arm)

Steel	Nylon	Acetal	ABS	Zinc
<p>(2)</p> <p>(4)</p> <p>(2)</p> <p>(2)</p> <p>(1)</p> <p>(1)</p> <p>(8)</p> <p>(1)</p>	<p>(1)</p> <p>(1)</p> <p>(1)</p> <p>(1)</p>	<p>(2)</p> <p>(1)</p>	<p>(1)</p>	<p>(1)</p>

Disassemble Control

1. Remove screw (**steel**), then pull control knob free from chair control assembly.

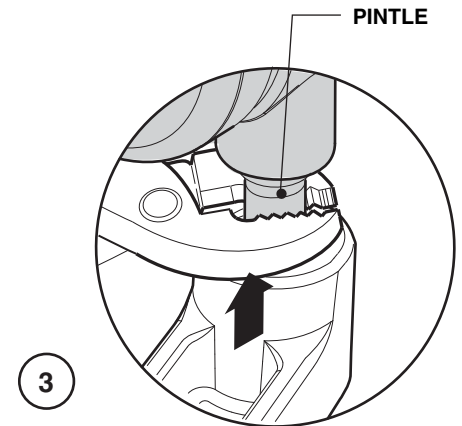
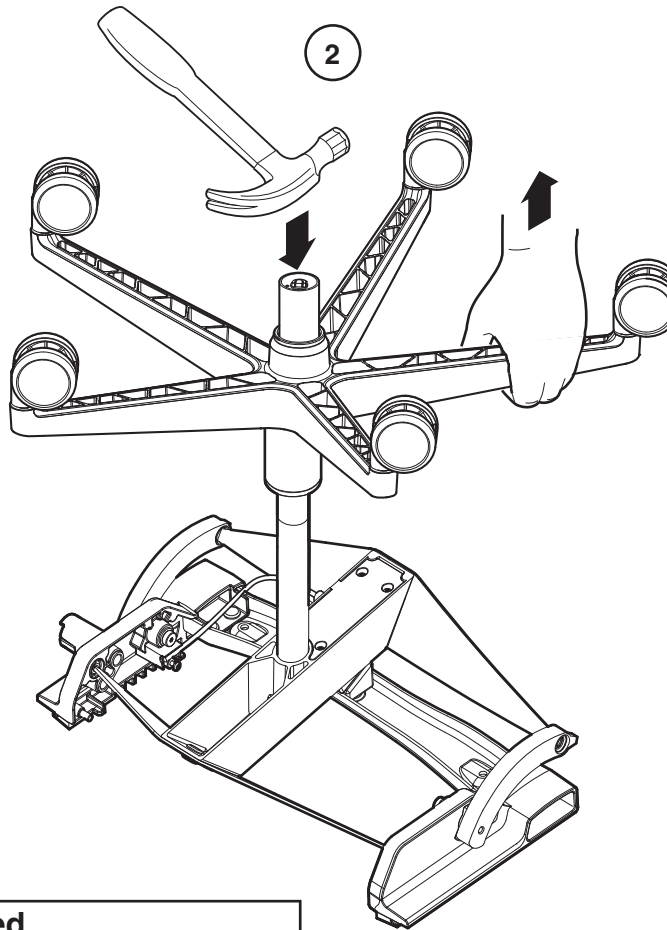
2. Separate parts as shown.



Bins for components removed		
Steel	Nylon	Acetal
<p>(1) (1) (1) (1)</p>	<p>(1) (1) (1) (1) (1)</p>	<p>(1) (1) (1) (1) (2)</p>

Removal of Base

1. Turn chair upside down.
2. Apply lifting force to the base with one hand. With a hammer in the other hand, strike the bottom end of the column until the base and column separate.
3. Use hands to remove casters from base. If necessary, use pliers on caster pintle.



Bins for components removed		
Metal	Nylon or Aluminum	Scrap
<p>(1)</p>	<p>(1)</p>	<p>(5)</p>

