

CZ-3339

# Instruções de Montagem Assembly Instructions Instrucciones de Montaje

Acesse Vídeos de Montagens  
Access Mounting Videos  
Acceder a los Vídeos de Montaje  
[www.tecnomobili.ind.br](http://www.tecnomobili.ind.br)

**tecnomobili**

Estrada RSC 453, Km s/n° | Garibaldi | RS  
CEP: 95720-000 | Fone / Fax: 54.3464.2050  
[sac@moveisvideira.com.br](mailto:sac@moveisvideira.com.br)

## Notas Especiais:

- 01** - Examine completamente todas as peças do móvel antes de começar o trabalho.  
**02** - Recomenda-se montar o móvel conforme este Manual de Montagem.  
**03** - É de responsabilidade do montador seguir as instruções do Manual de Montagem, que são fundamentais para garantir a estrutura do móvel.  
**04** - Para limpeza, utilizar somente pano úmido e sabão neutro.

## Special notes:

- 01** - Check all parts of the unit thoroughly before starting work.  
**02** - It is recommended to assemble the furniture according to this Installation Manual.  
**03** - It is the responsibility of the assembler to follow the instructions in the Assembly Manual, which are essential to ensure the structure of the furniture.  
**04** - For cleaning use only damp cloth and neutral soap.

## Notas especiales:

- 01** - Examine completamente todas las piezas del mueble antes de iniciar el trabajo.  
**02** - Se recomienda montar el mueble conforme el Manual de Ensamblaje.  
**03** - Es de responsabilidad del montador seguir las instrucciones del Manual de Ensamblaje, que son fundamentales para garantizar la estructura del mueble.  
**04** - Para limpieza solamente usar trapo húmedo y jabón neutro.

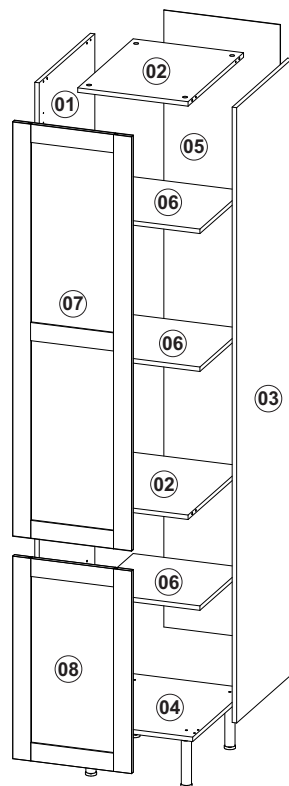
## Guarante certificate:

The guarantee of products manufactured by Móveis Videira LTDA covers any defects / manufacturing defects, within the period established by the Consumer Protection Code, in its Article 26, II, which provides for a legal guarantee of ninety (90) days.

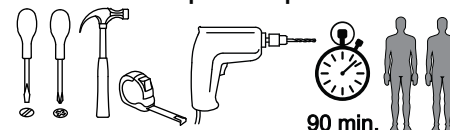


## Lista de Peças / List of pieces / Lista de piezas

C6D	DESCRIÇÃO	DESCRIPTION	DESCRIPCIÓN	QTD	RAW MATERIAL	DIMENSION	CÓD
01	Lateral Esquerda	Left Side	Lateral Izquierda	1	MDF 15mm	2035x490x15mm	311108
02	Prateleira	Shelf	Estante	2	MDF 15mm	368x490x15mm	201108
03	Lateral Direita	Rigth side	Lateral derecha	1	MDF 15mm	2035x490x15mm	301108
04	Base	Base	Base	1	MDF 15mm	400x490x15mm	101108
05	Costa	Back	Costa	1	MDF 03mm	2040x388x03mm	401108
06	Prateleira Movei	Mobile shelf	Prateleira Movil	3	MDF 15mm	368x385x15mm	211108
07	Porta Superior Almofada	Cushion Top Door	Puerta Basculante Acolchada	1	MDF 15mm	1370x396x15mm	81307
08	Porta Almofada	Cushion Door	Puerta Acolchada	1	MDF 15mm	670x396x15mm	91300



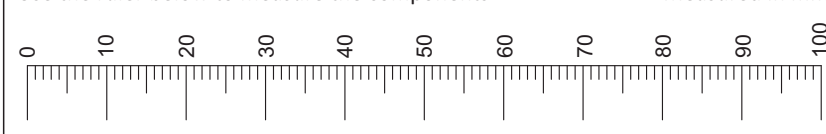
## Ferramentas | Tools | Herramientas



Revisão: 00  
Data: 25/09/2024

Use the ruler below to measure the components

Measured in mm

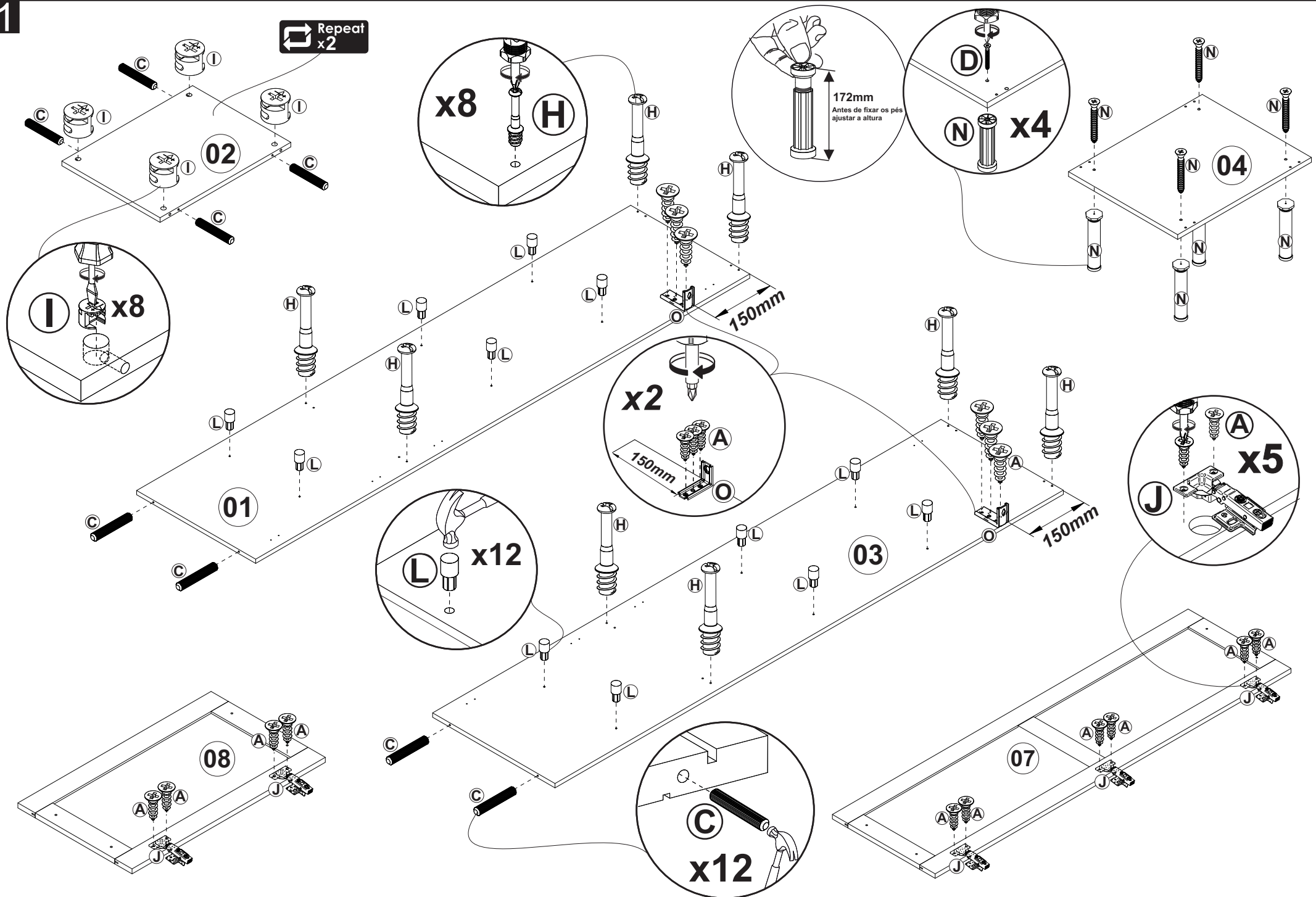


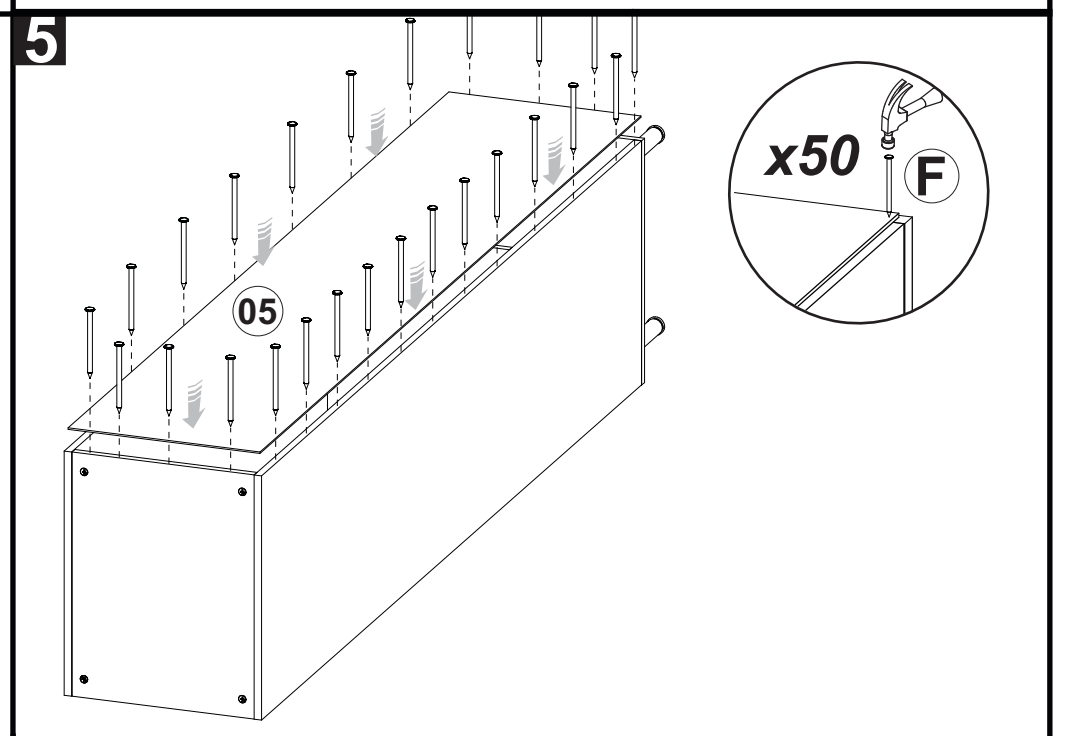
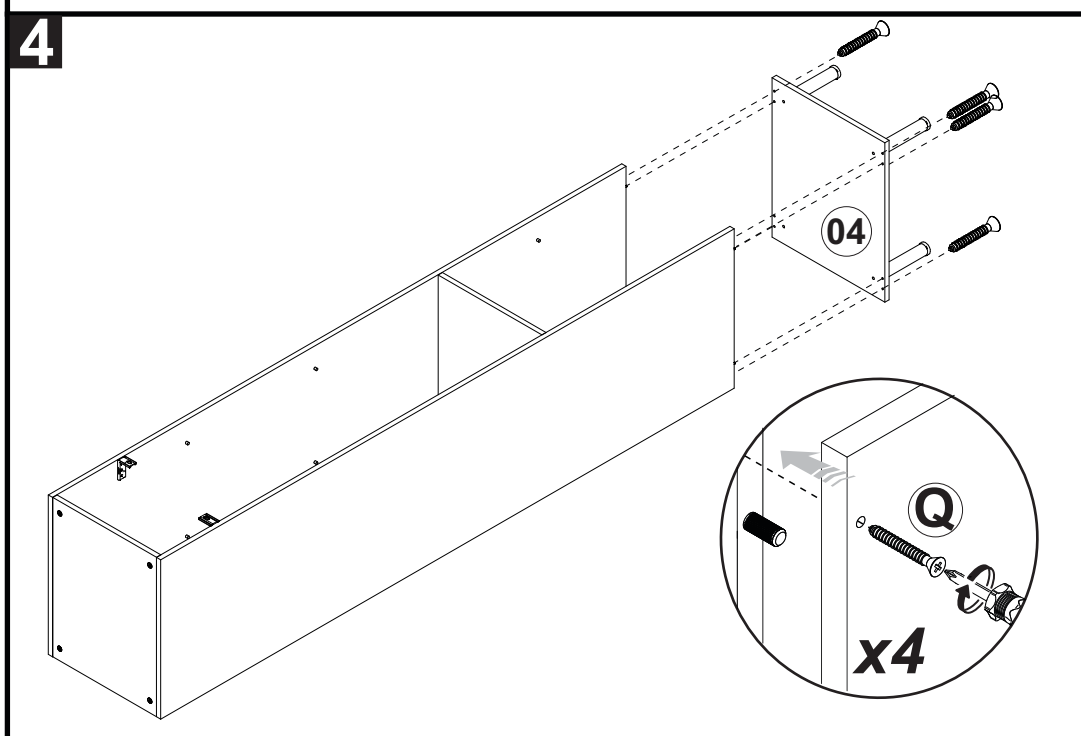
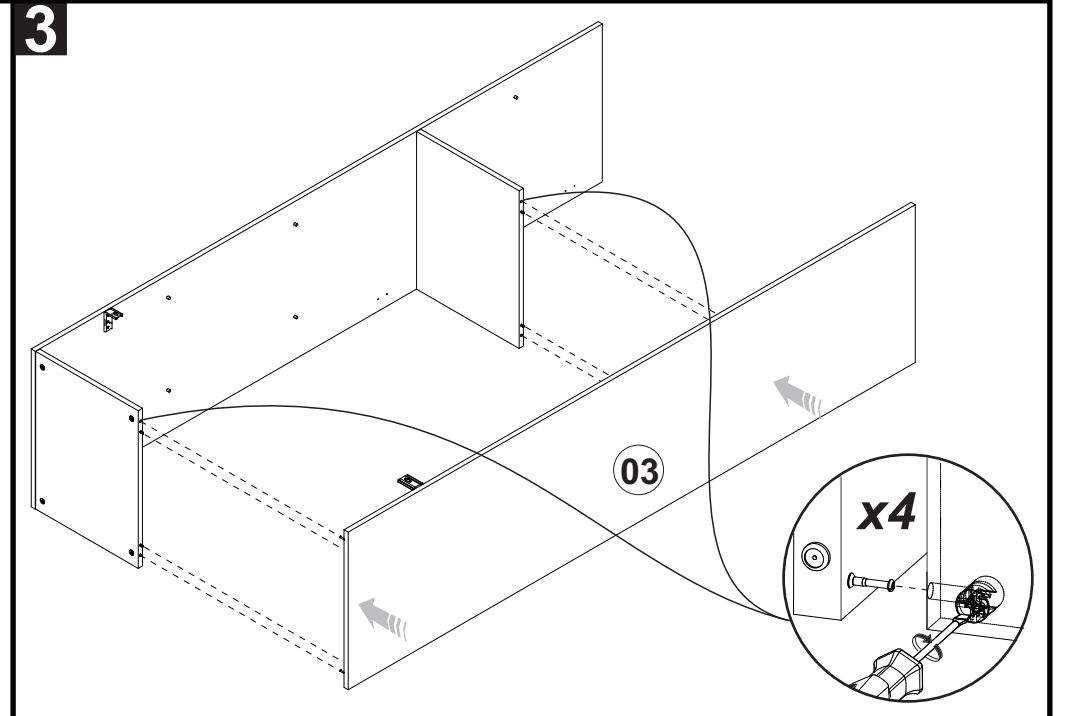
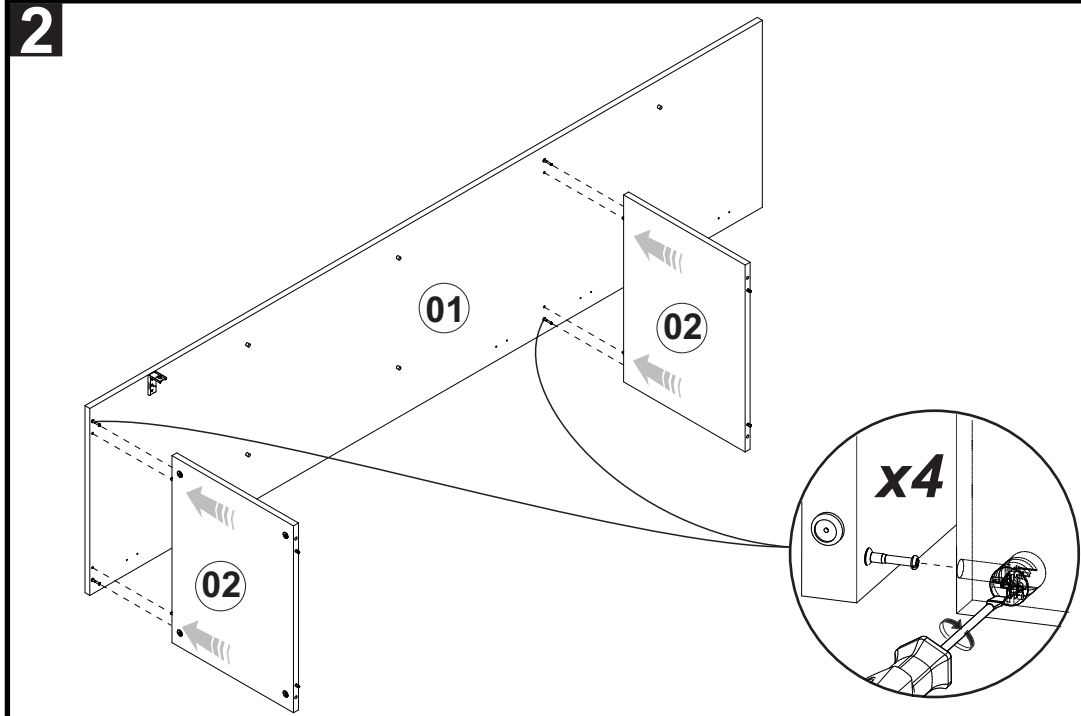
## TAMANHO REAL - TAMAÑO VERDADERO - REAL SIZE

REF	DESCRIÇÃO	QTD	CÓD
A	3,5x14mm CC	36	3639
B	3,5x25mm CP	04	9623
C	Cavilha 5 x 30mm	12	3880
D	5,0x40mm CC	04	4000
E	5x45mm CF	02	2605

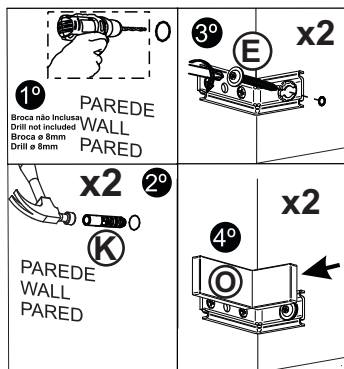
## ILUSTRAÇÃO - ILUSTRACION - ILLUSTRATION

REF	DESCRIÇÃO	QTD	CÓD
F	22x3mm Prego 10x10	50	3051
G	Puxador Less Black-Black 192 entre furos	02	
H	34x7mm Parafuso minifix	08	3771
I	15x12mm Tambor minifix	08	9516
J	Dobradiça Reta C/Amortecedor Caneco 35mm	05	9934
K	40x8mm Bucha 8mm	02	5623
L	14 x 8 x 5mm Suporte de Prateleira	12	3748
M	Adesivo Tapa Furo	04	
N	Pé Plástico 170mm Com Detalhe Cromado	04	
O	43x43x25mm Cantoneira com Capa	02	5630
P	3,5x25mm CC	02	0286
Q	3,5x40mm CC	04	8115





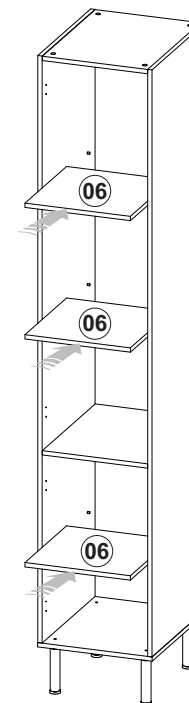
6



**CUIDADO!**  
-AS FERRAGENS DESTE PRODUTO  
NÃO PODEM SER UTILIZADAS EM  
PAREDES DRYWALL  
-UTILIZAR A BUCHA APENAS EM  
PAREDES DE ALVENARIA



7



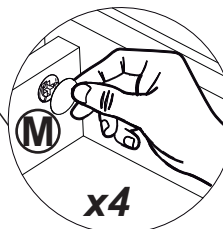
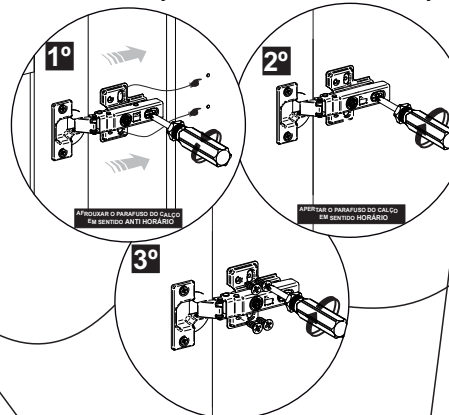
8



Opção lado esquerdo  
Opcion lado izquierdo  
Option left side



Ajuste das Portas- Ajustes de las Puertas- Doors Adjustment



Opção lado Direito  
Opcion lado Derecho  
Option right side

