

CZ-3306

# Instruções de Montagem Assembly Instructions Instrucciones de Montaje

Acesse Vídeos de Montagens  
Access Mounting Videos  
Acceder a los Vídeos de Montaje  
[www.tecnomobili.ind.br](http://www.tecnomobili.ind.br)

**tecnomobili**

Estrada RSC 453, Km s/n° | Garibaldi | RS  
CEP: 95720-000 | Fone / Fax: 54.3464.2050  
[sac@moveisvideira.com.br](mailto:sac@moveisvideira.com.br)

## Notas Especiais:

**01** - Examine completamente todas as peças do móvel antes de começar o trabalho.

**02** - Recomenda-se montar o móvel conforme este Manual de Montagem.

**03** - É de responsabilidade do montador seguir as instruções do Manual de Montagem, que são fundamentais para garantir a estrutura do móvel.

**04** - Para limpeza, utilizar somente pano úmido e sabão neutro.

## Special notes:

**01** - Check all parts of the unit thoroughly before starting work.

**02** - It is recommended to assemble the furniture according to this Installation Manual.

**03** - It is the responsibility of the assembler to follow the instructions in the Assembly Manual, which are essential to ensure the structure of the furniture.

**04** - For cleaning use only damp cloth and neutral soap.

## Notas especiales:

**01** - Examine completamente todas las piezas del mueble antes de iniciar el trabajo.

**02** - Se recomienda montar el mueble conforme el Manual de Ensamblaje.

**03** - Es de responsabilidad del montador seguir las instrucciones del Manual de Ensamblaje, que son fundamentales para garantizar la estructura del mueble.

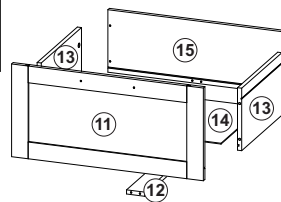
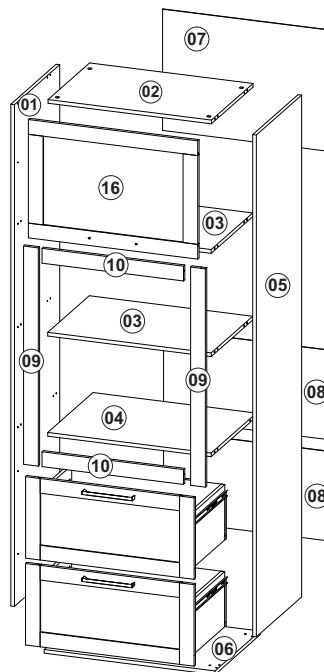
**04** - Para limpieza solamente usar trapo húmedo y jabón neutro.

## Guarante certificate:

The guarantee of products manufactured by Móveis Videira LTDA covers any defects / manufacturing defects, within the period established by the Consumer Protection Code, in its Article 26, II, which provides for a legal guarantee of ninety (90) days.

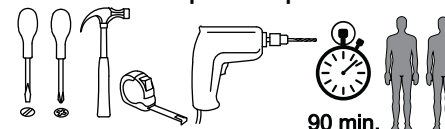
## Lista de Peças / List of pieces / Lista de piezas

Cód	DESCRIÇÃO	DESCRIPTION	DESCRIPCION	QTD	RAW MATERIAL	DIMENSION	CÓD
01	Lateral Esquerda	Left Side	Lateral Izquierda	1	MDF 15mm	2035x490x15mm	311107
02	Tampo	Top	Tapa	1	MDF 15mm	668x450x15mm	701107
03	Prateleira Menor	Smaller shelf	Estante Menor	2	MDF 15mm	668x450x15mm	201107
04	Prateleira	Shelf	Estante	1	MDF 15mm	668x490x15mm	211107
05	Lateral Direita	Right Side	Lateral Derecha	1	MDF 15mm	2035x490x15mm	301107
06	Base	Base	Base	1	MDF 15mm	698x490x15mm	101107
07	Costa Superior	Upper Back	Costa Superior	1	MDF 03mm	667x492x03mm	421107
08	Costa Inferior	Lower Back	Costa Inferior	2	MDF 03mm	688x363x03mm	411107
09	Travessa Frontal Maior	Larger front rail	Travessa Frontal Mayor	2	MDF 15mm	855x60x15mm	601107
10	Travessa Frontal Menor	Smaller front rail	Travessa Frontal Menor	2	MDF 15mm	574x60x15mm	611107
11	Frente Gavetão	Front Hatch	Frente Gavett	2	MDF 15mm	694x333x15mm	81306
12	Apoio Gaveta	Gavette Suport	Apoio Gavett	2	MDF 15mm	385x65x15mm	601101
13	Lateral Gavetão	Side Drawer	Lateral Gavett	4	MDF 15mm	385x224x15mm	341101
14	Fundo Gaveta	Bottom Drawer	Fundo Gaveta	2	MDF 03mm	620x394x03mm	431107
15	Costa Gaveta	Drawer Back	Costa Gavett	2	MDF 15mm	642x224x15mm	401107
16	Porta Basculante Almofada	Door	Puerta	1	MDF 15mm	694x481x15mm	91306



<b>S</b>		3,5x25mm CC	<b>02</b>	<b>0286</b>
<b>T</b>		3,5x40mm CC	<b>04</b>	<b>8115</b>

## Ferramentas | Tools | Herramientas



90 min.

Revisão: 02  
Data: 07/02/2025

Use the ruler below to measure the components

Measured in mm



## TAMANHO REAL - TAMAÑO VERDADERO - REAL SIZE

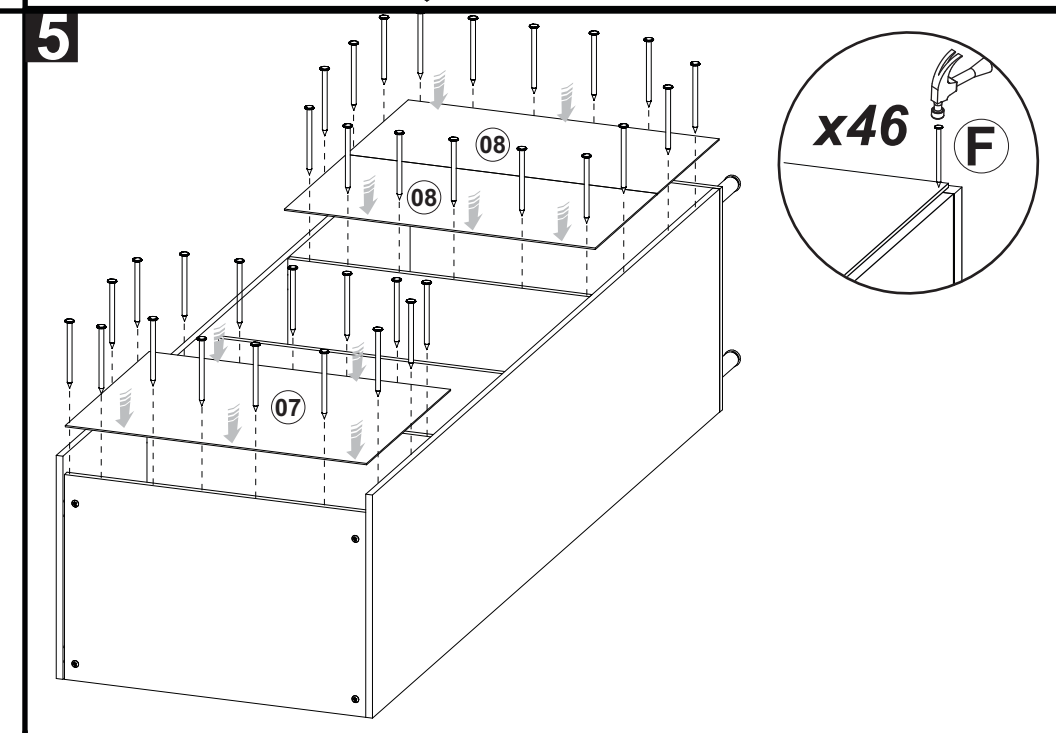
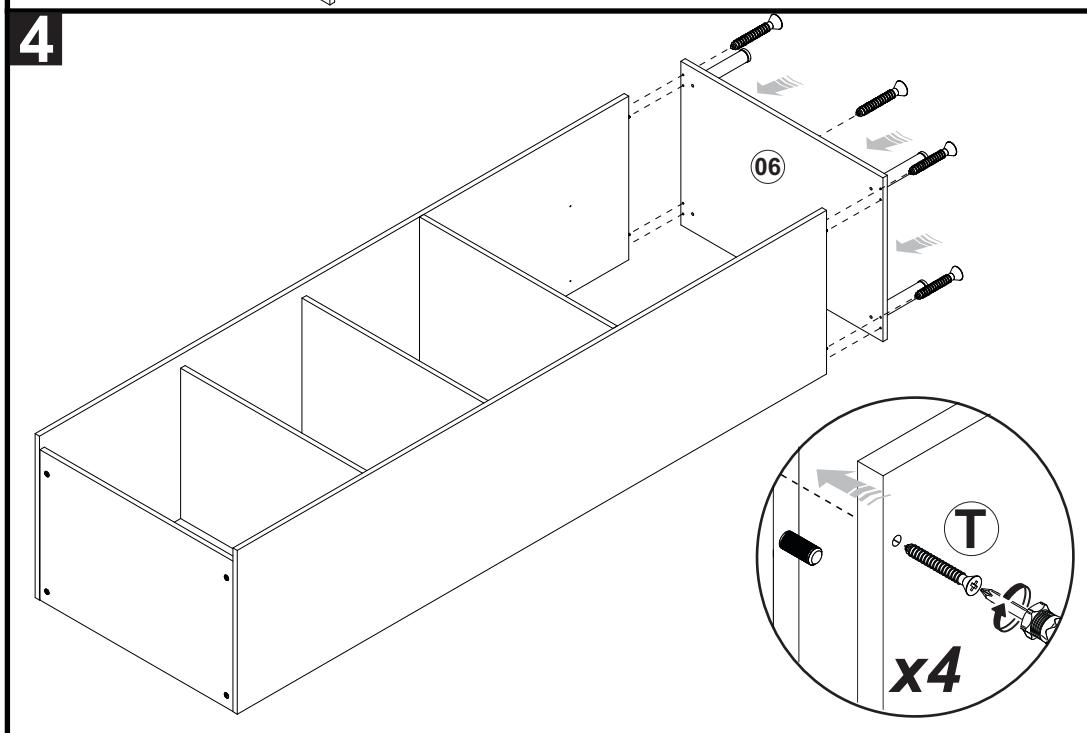
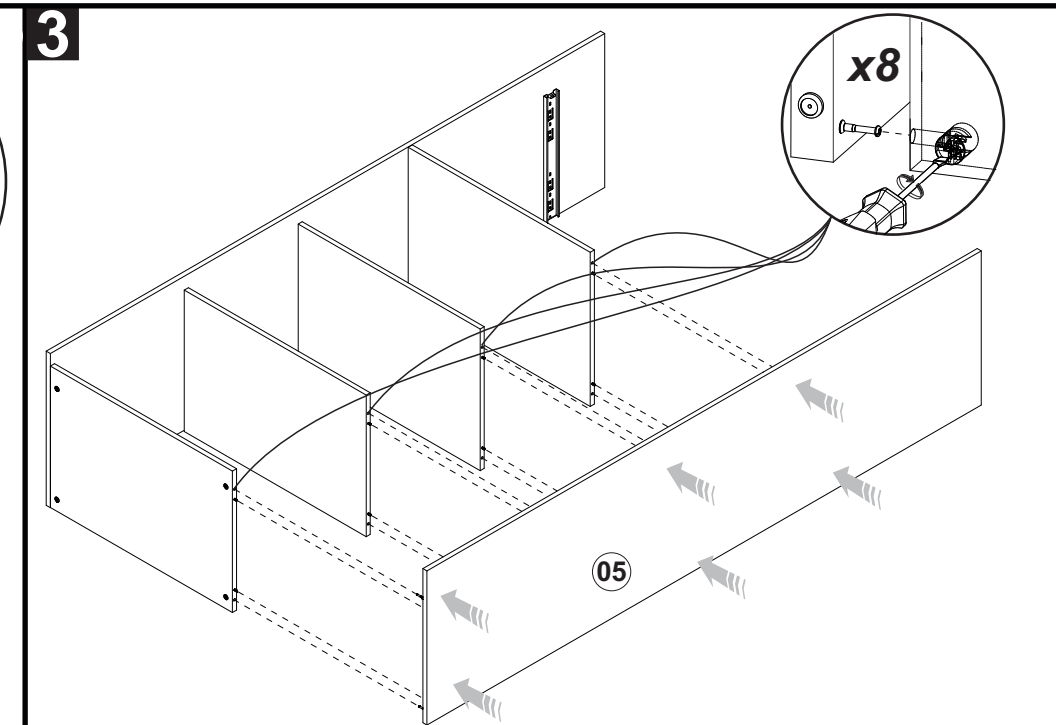
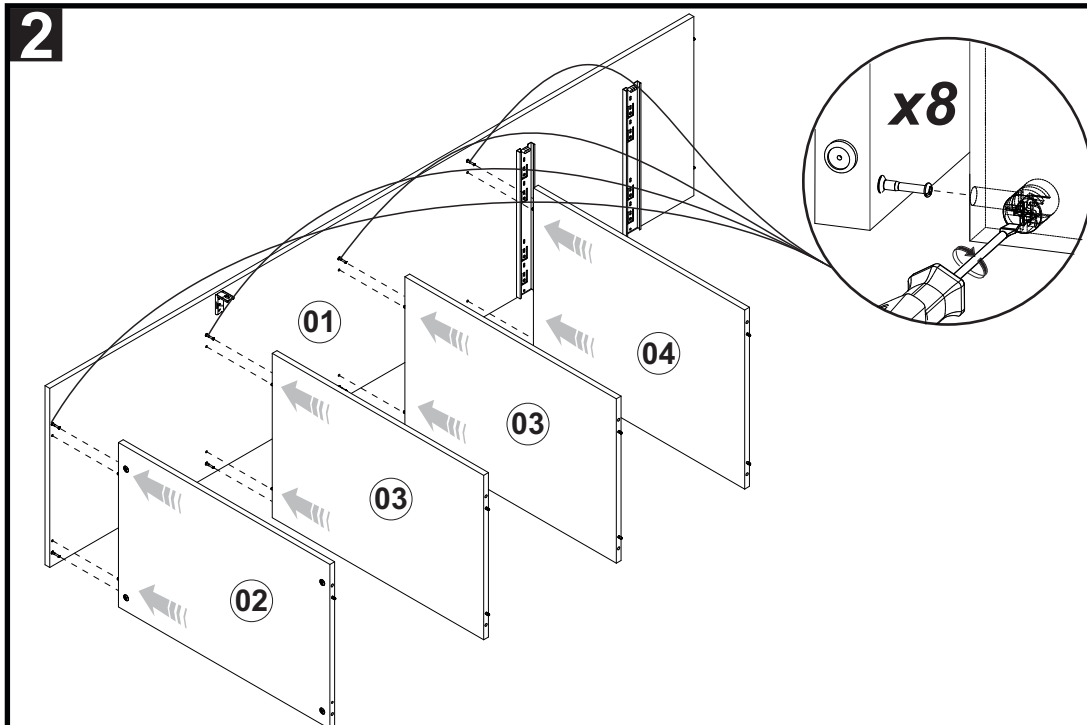
REF	DESCRIÇÃO	QTD	CÓD
<b>A</b>		<b>43</b>	<b>3639</b>
<b>B</b>		<b>06</b>	<b>9623</b>
<b>C</b>		<b>28</b>	<b>3880</b>
<b>D</b>		<b>04</b>	<b>4000</b>
<b>E</b>		<b>02</b>	<b>2605</b>

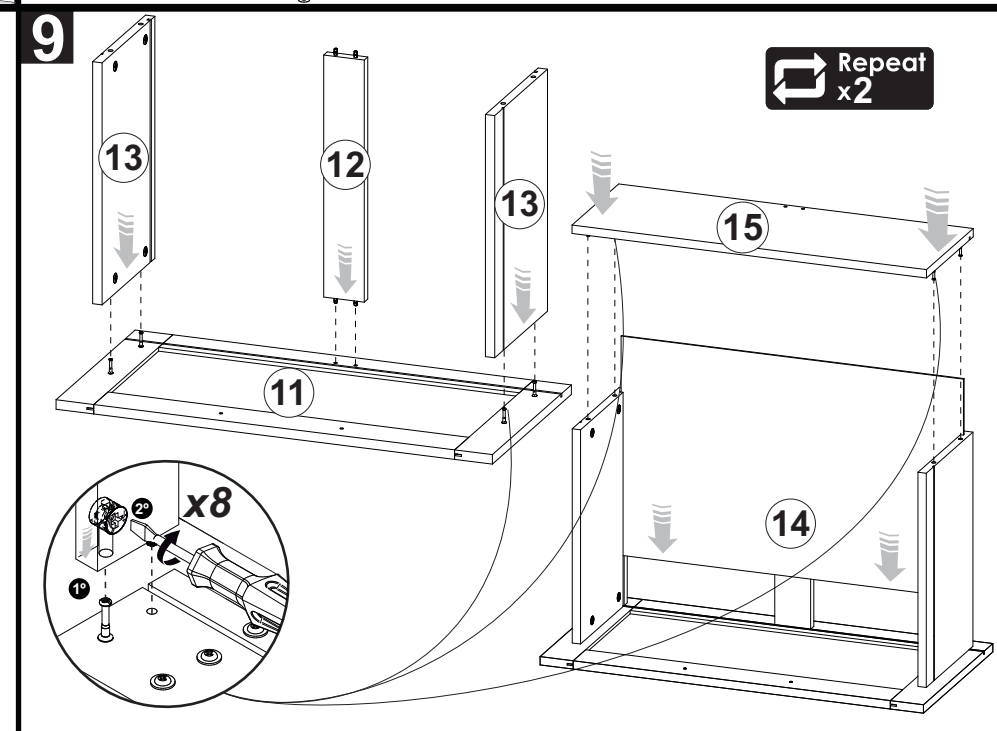
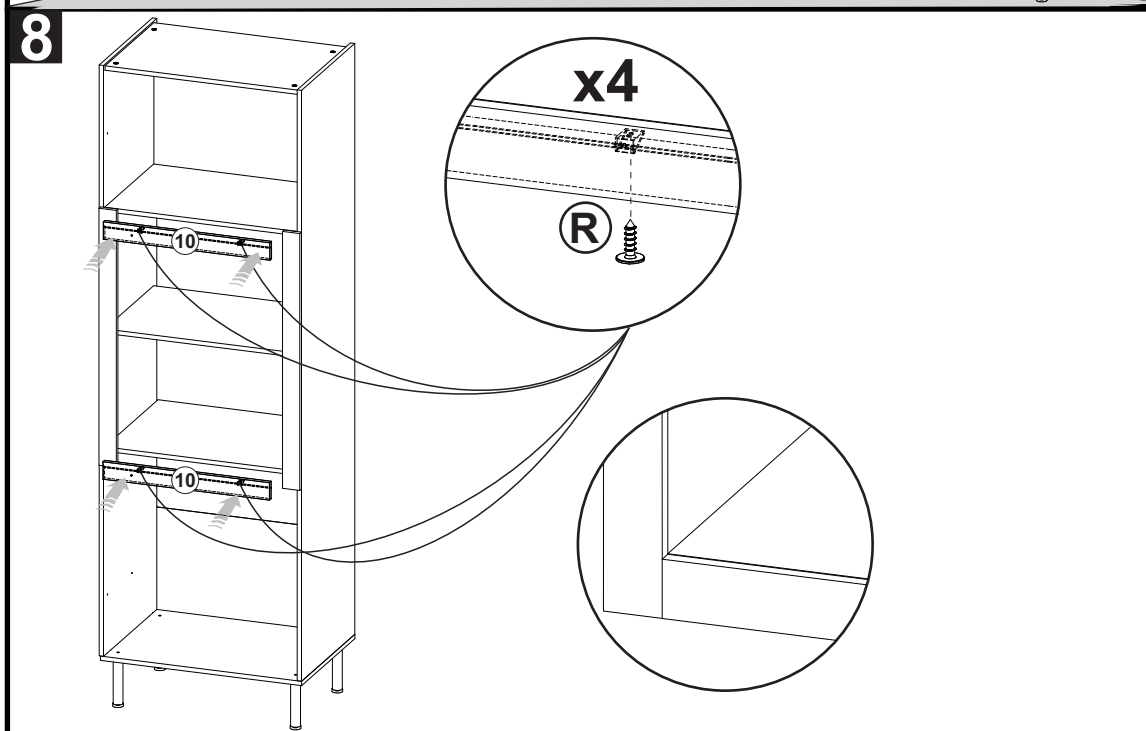
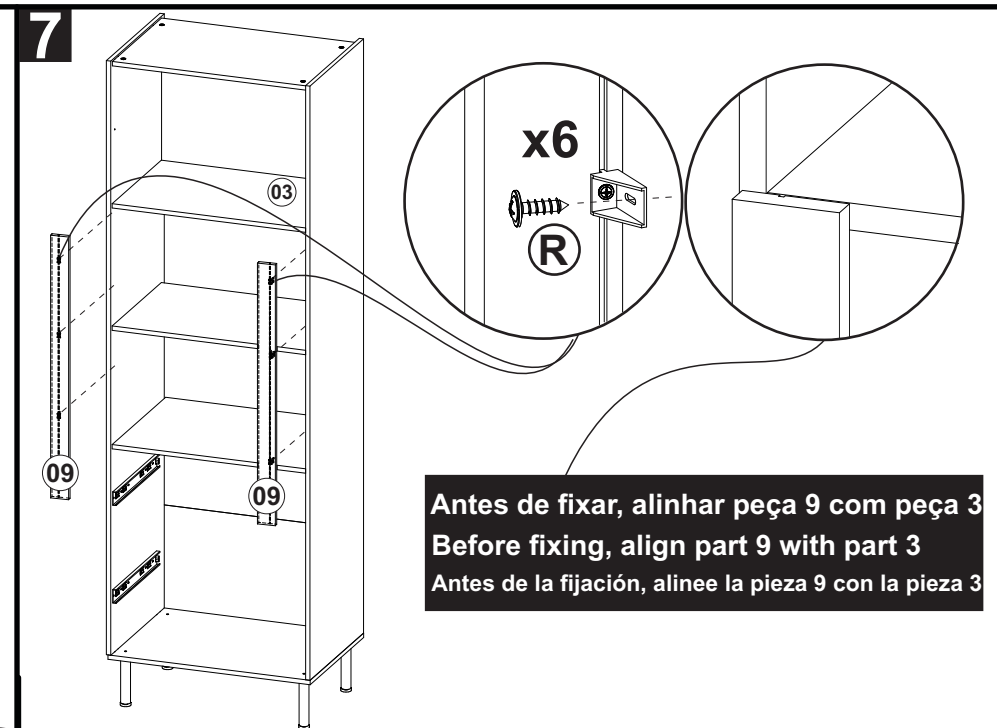
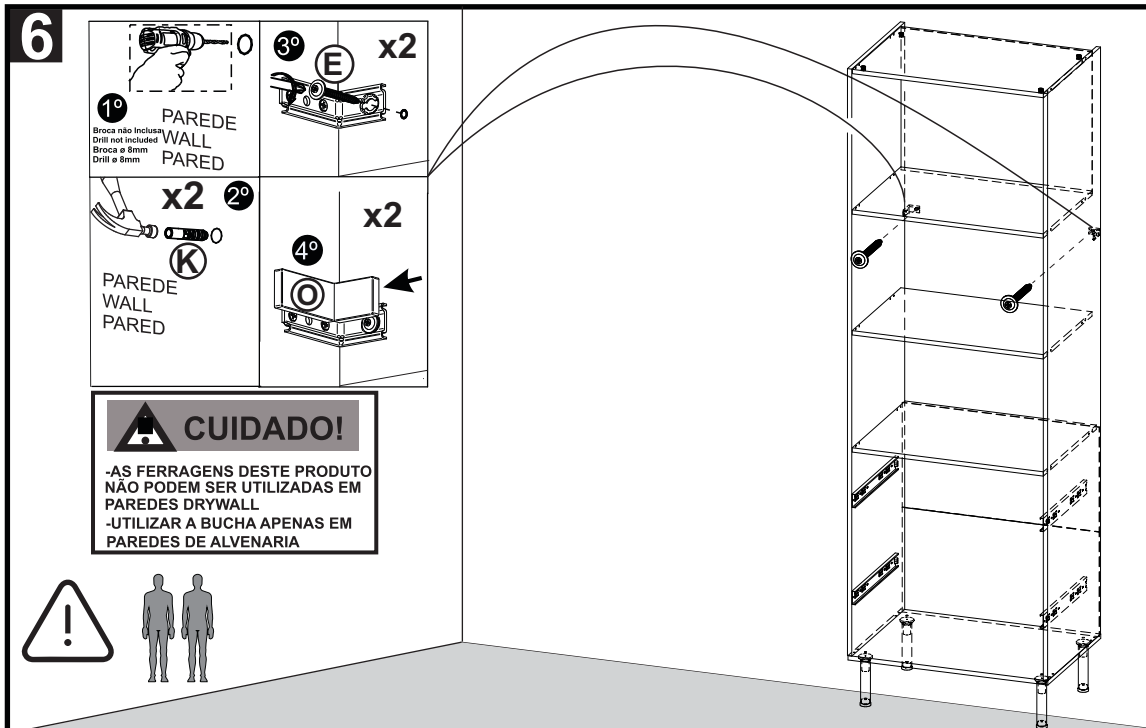
## ILUSTRAÇÃO - ILUSTRACION - ILLUSTRATION

REF	DESCRIÇÃO	QTD	CÓD
<b>F</b>		<b>46</b>	<b>3051</b>
<b>G</b>		<b>03</b>	
<b>H</b>		<b>32</b>	<b>3771</b>
<b>I</b>		<b>32</b>	<b>9516</b>
<b>J</b>		<b>02</b>	<b>9934</b>
<b>K</b>		<b>02</b>	<b>5623</b>
<b>L</b>		<b>02</b>	
<b>M</b>		<b>24</b>	
<b>N</b>		<b>04</b>	
<b>O</b>		<b>02</b>	<b>5630</b>
<b>P</b>		<b>02</b>	<b>3612</b>
<b>Q</b>		<b>10</b>	<b>3572</b>
<b>R</b>		<b>20</b>	<b>3759</b>







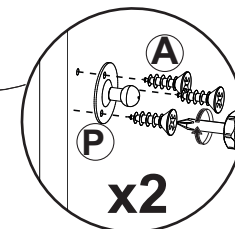
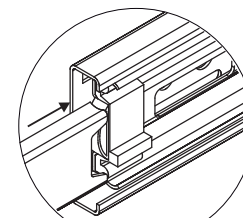
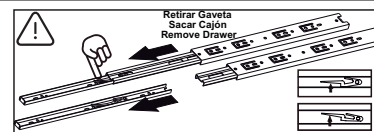
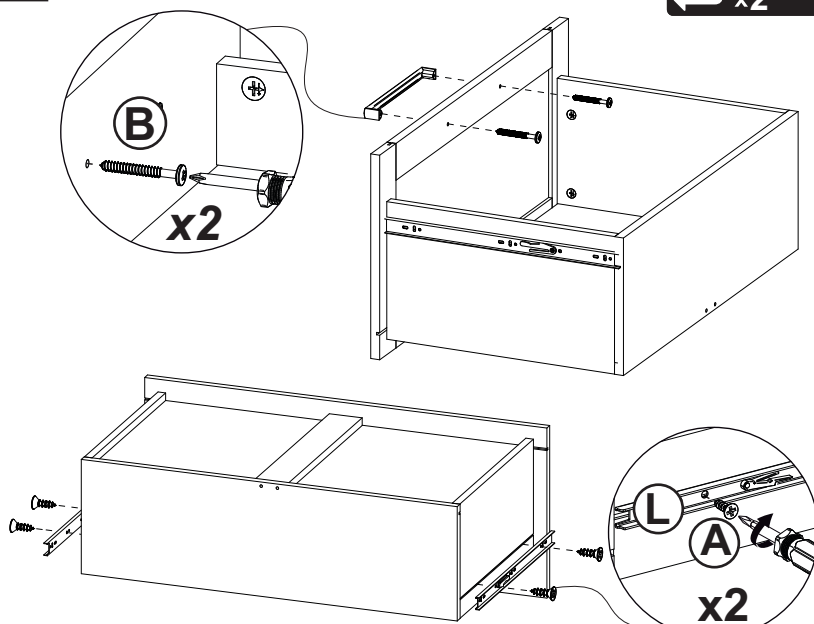


10

Repeat  
x2

11

12



13

Ajuste das Portas- Ajustes de las Puertas- Doors Adjustment

