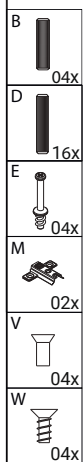
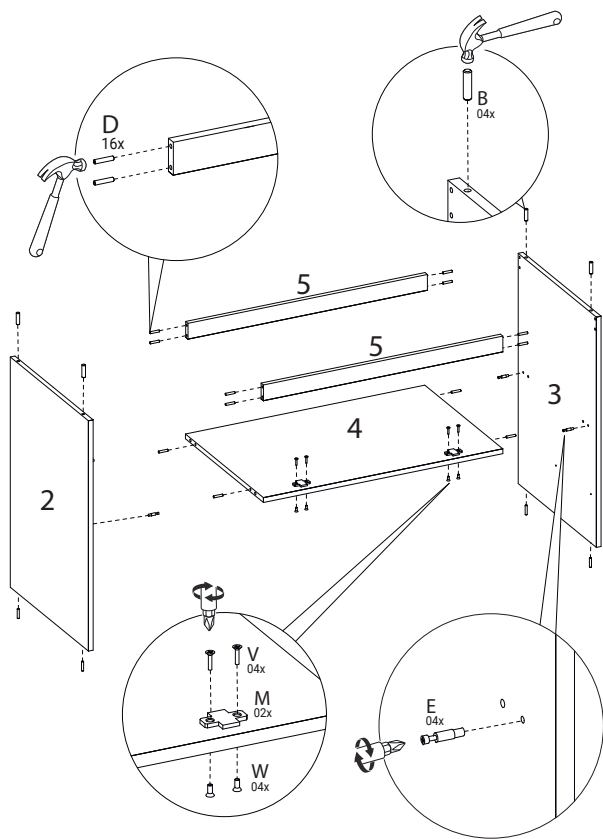


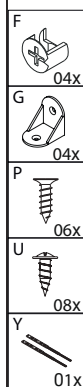
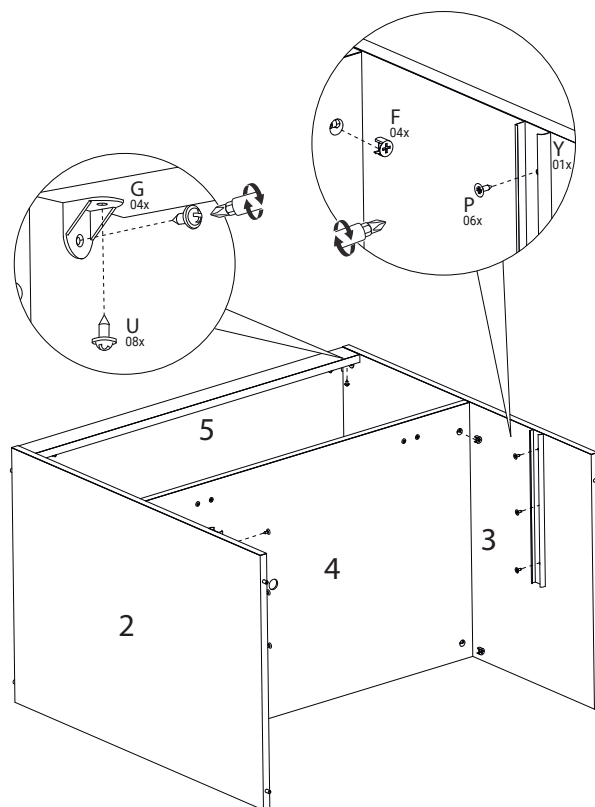
VOLUME			ITEM	PEÇA	DESCRIÇÃO			DIMENSÕES (mm)			QUANTIDADE			TABELA DE ACESSÓRIOS TABLA DE ACCESORIOS ACCESSORIES TABLE		
Caja	Artículo	Pieza	Descripción			Dimensión			Cantidad	Material	Código Code	Descrição Description Description		Quantidade Amount		
BOX	Item	Part	Description			Dimension			Amount							
1	1	510475001	BASE BASE BASE			800	502	15	1	MDF	A 160001002	PRENDEDOR DE FUNDOS ABRAZADERA INFERIOR FUNCTIONAL CLAMP		4		
1	2	510475002	LATERAL ESQUERDA LATERAL IZQUIERDO LEFT SIDE			723	501	15	1	MDF	B 160001004	CAVILHA 8X30MM CLAVIA 8X30MM DOWEL 8X30MM		4		
1	3	510475003	LATERAL DIREITA LADO DERECHO RIGHT SIDE			723	501	15	1	MDF	D 160001023	CAVILHA 6X30MM CLAVIA 6X30MM DOWEL 6X30MM		22		
1	4	510475004	PRATELEIRA FIXA ESTANTE FIJO FIXED SHELF			767	500	15	1	MDF	E 160001024	PINO GIROFIX PIN GIROFIX GIRLOFIX PIN		18		
1	5	510475005	TRAVESSA FRONTAL / TRASEIRA BALLESTA DELANTERA/TRASERA FRONT / REAR CROSSBOARD			767	50	15	2	MDF	F 160001025	CASTANHA DO MINI-GIROFIX TUERCA MINI-GIROFIX MINI-GIROFIX BUTTON		18		
1	6	510475006	TAMPO TAMPO TOP			800	522	30	1	MDF	G 160001063	CANTONEIRA PLASTICA ESQUINA DE PLÁSTICO PLASTER		10		
1	7	510475007	PORTA PUERTA DOOR			793	366	15	1	MDF	H 160002002	TAMPA ADESIVA 18MM CUBIERTA ADHESIVA 18MM ADHESIVE COVER 18MM		8		
1	8	510475008	FRENTE GAVETA FRENTE DE CAJÓN DRAWER FRONT			793	366	15	1	MDF	I 160002006	BUCHA COJINETE BUSH		2		
1	9	510475009	APOIO GAVETA SOPORTE DE CAJÓN DRAWER SUPPORT			385	87	15	1	MDF	J 160002012	GIZ DE CORRECAO TIZA DE CORRECCIÓN CORRECTION CHALK		2		
1	10	510475010	CONTRA FUNDO GAVETA FONDO DEL CAJÓN DRAWER BOTTOM			712	265	15	1	MDF	K 160002015	BATENTE SILICONE TOPE DE SILICONA SILICONE STOPPER		4		
1	11	510475011	LATERAL ESQUERDA GAVETA CAJÓN LADO IZQUIERDO LEFT DRAWER SIDE			400	267	15	1	MDF	L 160002022	TAMPA ADESIVA 12MM CUBIERTA ADHESIVA 12MM ADHESIVE COVER 12MM		12		
1	12	510475012	LATERAL DIREITA GAVETA CAJÓN LADO DERECHO DRAWER RIGHT SIDE			400	267	15	1	MDF	M 160003003	DOBRADICA CANECA 35MM BAIXA BISAGRA TAZA 35MM BAJA LOW CUP HINGE 35MM		2		
1	13	510475013	FUNDO GAVETA FONDO DEL CAJÓN DRAWER BOTTOM			722	394	2.8	1	MDF	N 160003007	PISTAO A GAS INVERTIDO PISTÓN DE GAS INVERTIDO INVERTED GAS PISTON		1		
1	14	510475014	FUNDO ABAJO BOTTOM			793	376	2.8	2	MDF	O 160005086	PUXADOR VIENA PUXADOR VIENA PUXADOR VIENA		2		
											P 160006001	PARAFUSO 3,5X12 CABECA CHATA TORNILLO CABECA PLANA 3.5X12 FLAT HEAD SCREW 3.5X12		12		
											Q 160006006	PARAFUSO 3,5X40 CABECA CHATA TORNILLO 3.5X40 CABECA PLANA FLAT HEAD SCREW 3.5X40		4		
											R 160006010	PARAFUSO 4,5X50 CABECA CHATA TORNILLO 4.5X50 CABECA PLANA FLAT HEAD SCREW 4.5X50		4		
											S 160006011	PREGO CLAVO NAIL		30		
											T 160006015	PARAFUSO 6,0X75 CABECA CHATA TORNILLO 6.0X75 CABECA PLANA FLAT HEAD SCREW 6.0X75		2		
											U 160006016	PARAFUSO 3,5X12 CABECA FLANGEADA TORNILLO 3.5X12 CABECA BRIDA FLANGED HEAD SCREW 3.5X12		28		
											V 160006020	PINO UNIAO M4 12MM CHATA PIN UNIÓN M4 12MM PLANO FLAT M4 UNION PIN 12MM		4		
											W 160006022	PARAFUSO M4 12MM CHATA TORNILLO PLANO M4 12MM FLAT M4 SCREW 12MM		4		
											X 160006055	PARAFUSO 3,5X25 CABECA CHATA TORNILLO 3.5X25 CABECA PLANA SCREW 3.5X25 FLAT HEAD		4		
											Y 160008006	CORREDICA TELESCÓPICA DIAPOSITIVA TELESCÓPICA TELESCOPIC SLIDE		1		
											Z 160009068	PE PLASTICO RETANGULAR PE PLASTIC RECTANGULAR PE RECTANGULAR PLASTIC		4		



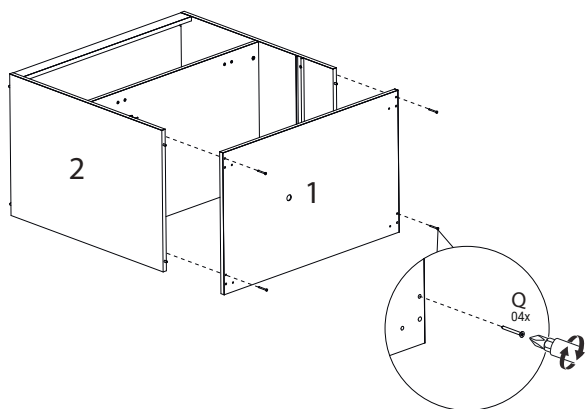
01



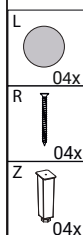
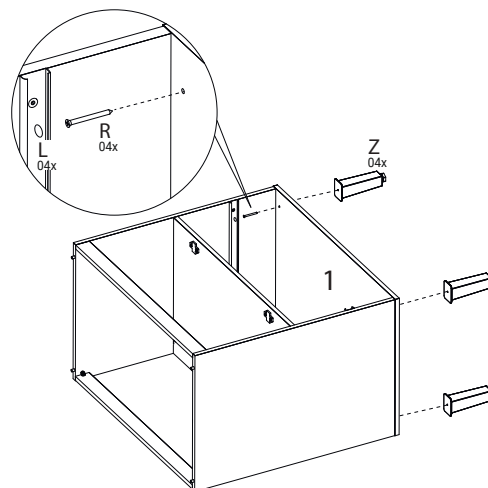
02



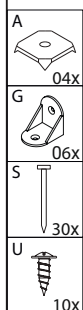
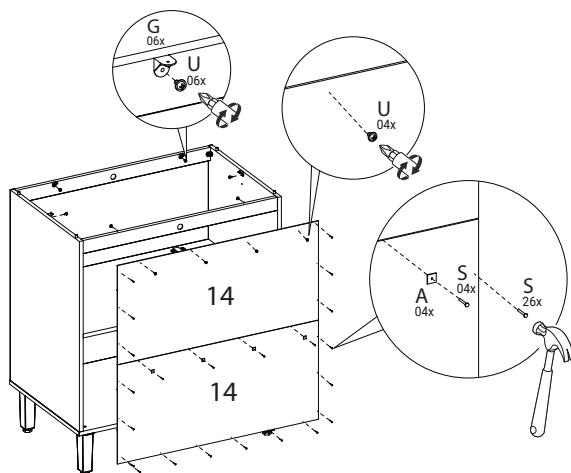
03



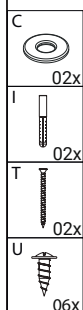
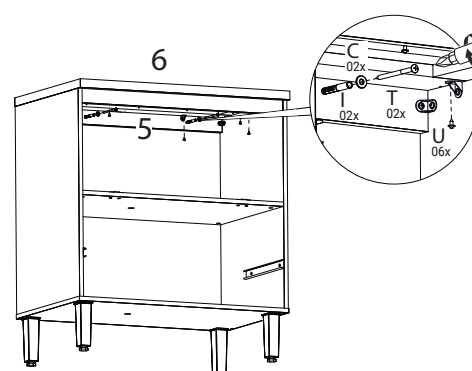
04



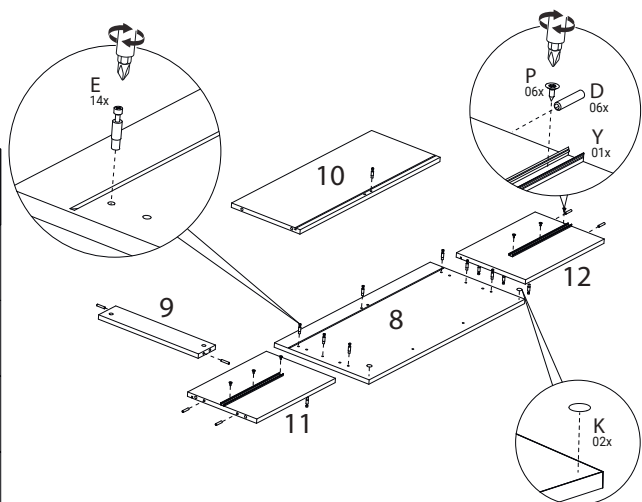
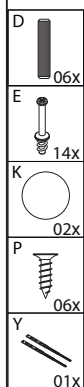
05



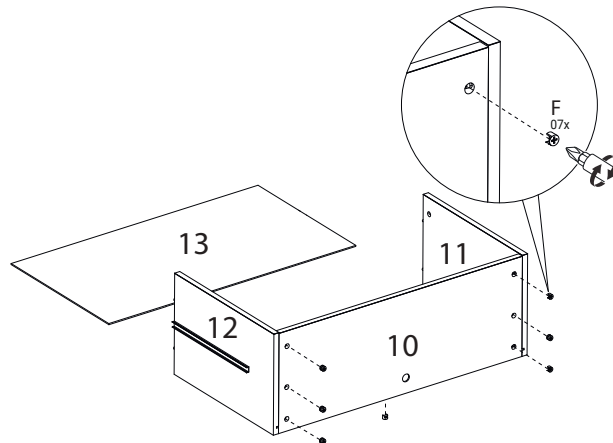
06



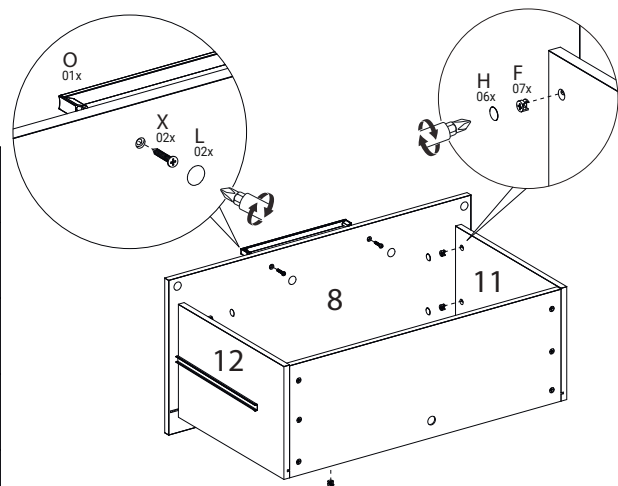
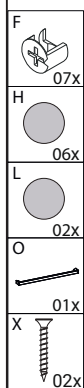
07



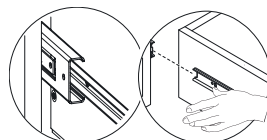
08



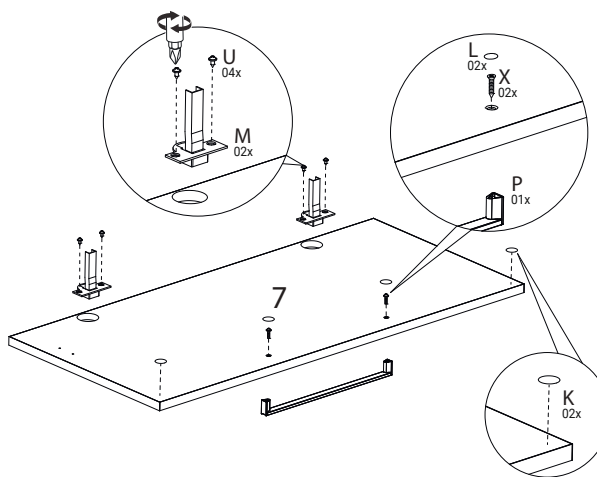
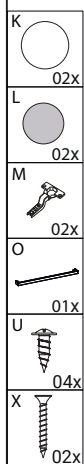
09



10



11



12

