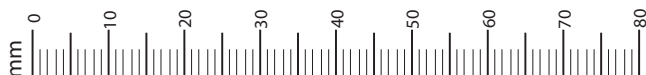
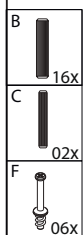
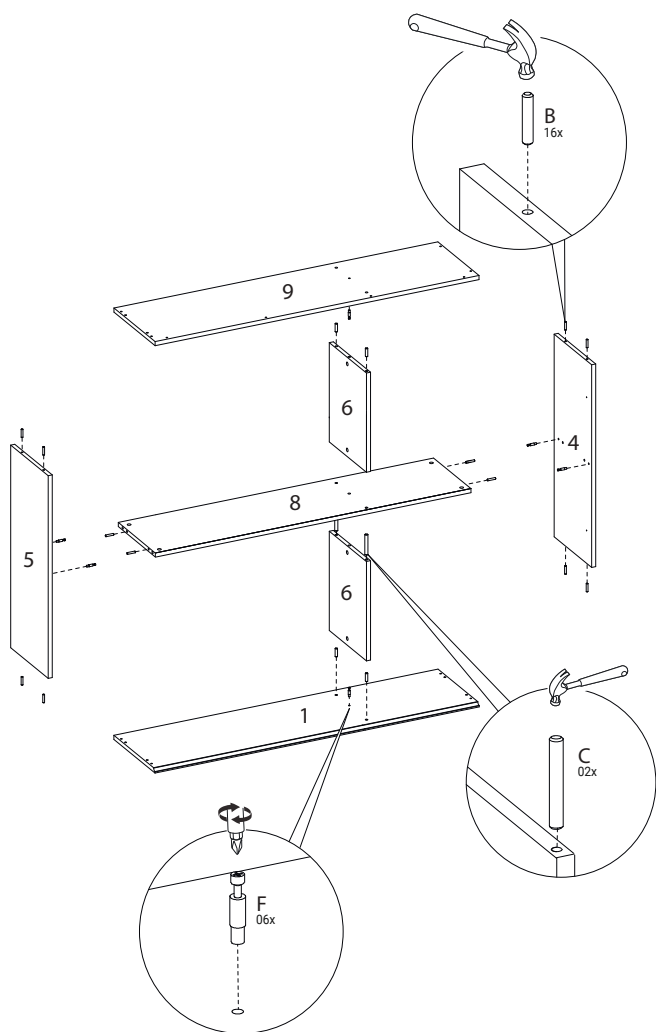


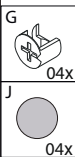
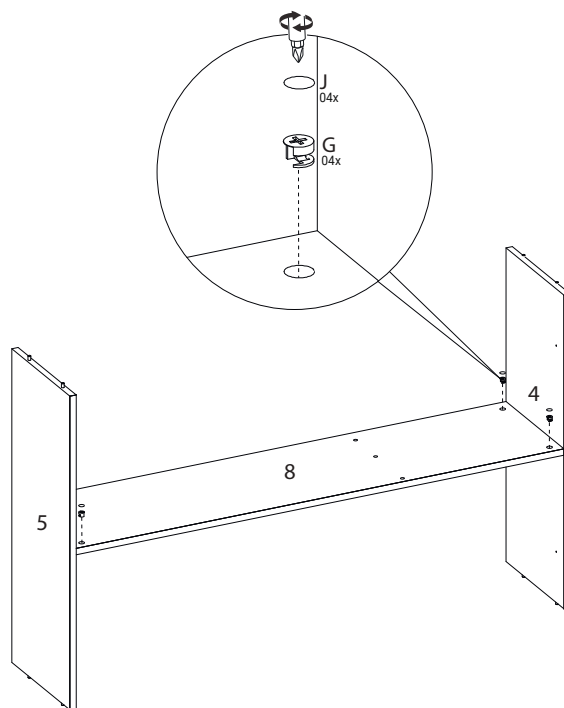
VOLUME			ITEM	PEÇA	DESCRIÇÃO	DIMENSÕES (mm)			QUANTIDADE		TABELA DE ACESSÓRIOS TABLA DE ACCESORIOS ACCESSORIES TABLE			
Caja	Artículo	Pieza			Descripción	Dimensión	Cantidad	Material		Código Code	Descrição Description Description	Quantidade Amount		
BOX	Item	Part			Description	Dimension	Amount							
1	1	510476001			BASE BASE BASE	1200	305	15	1	MDF	A 160001002	PRENDEDOR DE FUNDOS CLIP DE FONDOS FUNDING CLAMP	10	
											B 160001004	CAVILHA 8X30MM PASADOR 8X30MM DOT 8X30MM	16	
1	2	510476002			ENCABECAMENTO LATERAL RÚBITO LATERAL SIDE HEADING	244	70	15	2	MDF	C 160001005	CAVILHA 8X55MM PASADOR 8X55MM DOT 8X55MM	2	
1	3	510476003			ENCABECAMENTO FRONTAL ENCABEZADO DELANTERO FRONT HEADING	1200	60	15	1	MDF	D 160001008	PINO GIROFIX DUPL0 PIN DOBLE GIROFIX DOUBLE GIRLOFIX PIN	1	
1	4	510476004			LATERAL DIREITA LADO DERECHO RIGHT SIDE	735	278	15	1	MDF	E 160001009	ARRUELA ARANDELA WASHER	4	
1	5	510476005			LATERAL ESQUERDA LATERAL IZQUIERDO LEFT SIDE	735	278	15	1	MDF	F 160001024	PINO GIROFIX PIN FIJO PARA NIÑA GIRLOFIX PIN	6	
1	6	510476006			DIVISAO DIVISIÓN DIVISION	360	276	15	2	MDF	G 160001025	CASTANHA DO MINI-GIROFIX MINI-GIROFIX CASTAÑO MINI-GIROLOFIX BUTTON	8	
1	7	510476007			BATENTE TAPÓN FRAMING	360	50	15	2	MDF	H 160001056	CANTONEIRA ACO SUPORTE AEREO SOPORTE AEREO DE ESQUINA DE ACERO STEEL ANGLE FOR AERIAL SUPPORT	4	
1	8	510476008			PRATELEIRA ESTANTE SHELF	1167	277	15	1	MDF	I 160001058	CAPA PLASTICA SUPORTE AEREO CUBIERTA PLÁSTICA SOPORTE AEREO AERIAL SUPPORT PLASTIC COVER	4	
1	9	510476009			CHAPEU SOMBRERO HAT	1200	305	15	1	MDF	J 160002002	TAMPA ADESIVA 18MM CUBIERTA ADHESIVA 18MM ADHESIVE COVER 18MM	8	
1	10	510476010			MOLDURA FRONTAL SUPERIOR MARCO DELANTERO SUPERIOR UPPER FRONT FRAME	1200	25	15	1	MDF	K 160002006	BUCHA ARBUSTO BUSHING	4	
2	11	510476011			PORTA REFLECTA ESQUERDA PUERTA REFLECTANTE IZQUIERDA LEFT REFLECTIVE DOOR	715	396	15	1	MDF	L 160002012	GIZ DE CORRECAO TIZA CORRECTORIA CORRECTION CHALK	2	
2	12	510476012			PORTA REFLECTA DIREITA PUERTA REFLECTANTE DERECHA RIGHT REFLECTIVE DOOR	715	396	15	2	MDF	M 160002015	BATENTE SILICONE TAPÓN DE SILICONA SILICONE STOPPER	4	
1	13	510476013			FUNDO HORIZONTAL FONDO HORIZONTAL HORIZONTAL BOTTOM	800	380	2.8	2	MDF	N 160002022	TAMPA ADESIVA 12MM CUBIERTA ADHESIVA 12MM ADHESIVE COVER 12MM	18	
1	14	510476014			FUNDO VERTICAL FONDO VERTICAL VERTICAL BOTTOM	760	392	2.8	1	MDF	O 160003014	DOBRADICA COM AMORTECEDOR CINECA 35MM BAIXA BISAGRA COM AMORTIGUADOR COPA CABA 35MM LOW CLIP HINGE 35MM WITH SHOCK ABSORBER	6	
											P 160005085	PUXADOR PONTO MANIJA DE PUNTO POINT HANDLE	3	
											Q 160006006	PARAFUSO 3,5X40 CABECA CHATA TORNILLO DE CABEZA PLANA 3,5X40 FLAT HEAD SCREW 3.5X40	8	
											R 160006008	PARAFUSO 4,5X25 CABECA CHATA TORNILLO DE CABEZA PLANA 4.5X25 FLAT HEAD SCREW 4.5X25	18	
											S 160006011	PREGO CLAVO NAIL	30	
											T 160006015	PARAFUSO 6,0X75 CABECA CHATA TORNILLO 6.0X75 CABEZA PLANA FLAT HEAD SCREW 6.0X75	4	
											U 160006016	PARAFUSO 3,5X12 CABECA FLANGEADA TORNILLO DE CABEZA CON BRIDA DE 3,5 X 12 FLANGED HEAD SCREW 3.5X12	48	
											V 160006044	PARAFUSO M4 20MM CABECA CHATA TORNILLO M4 CABEZA PLANA 20MM M4 SCREW 20MM FLAT HEAD	3	



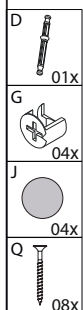
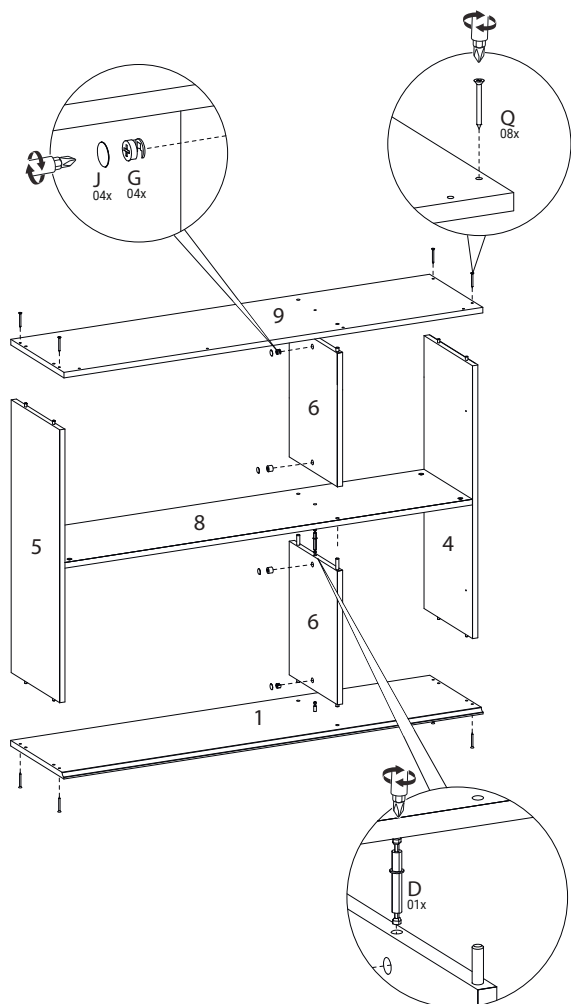
01



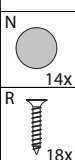
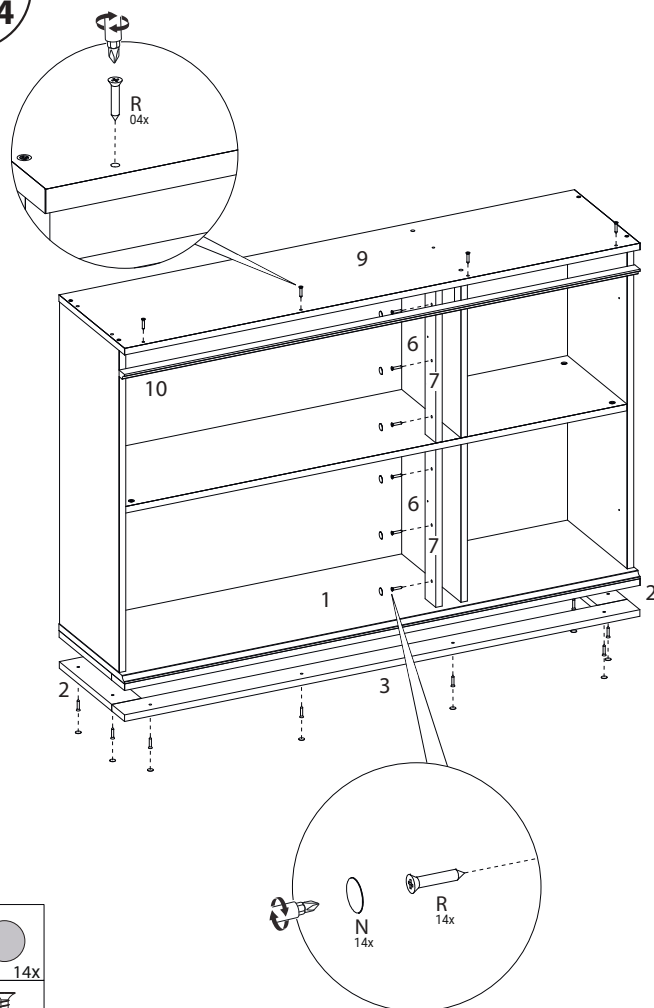
02



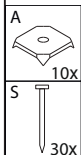
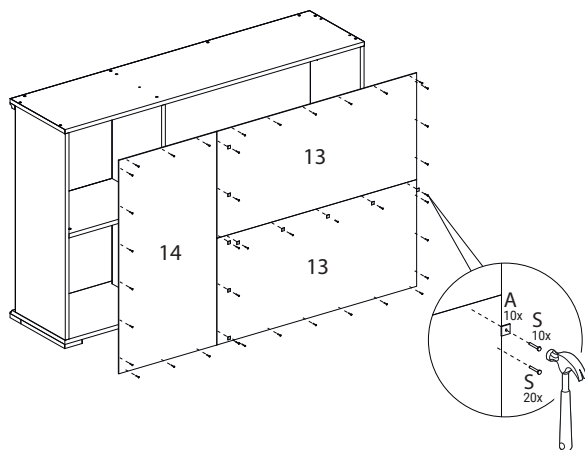
03



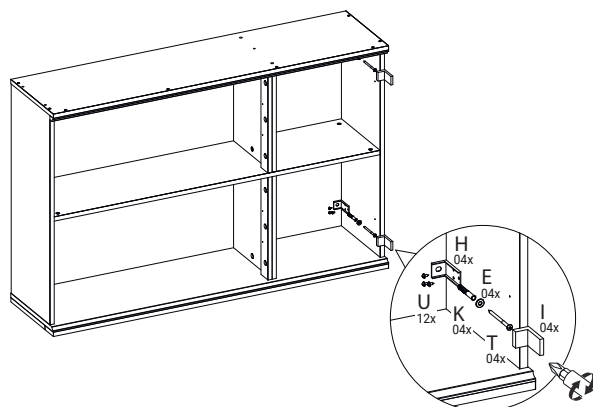
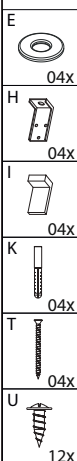
04



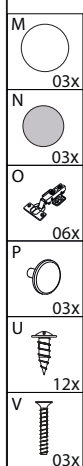
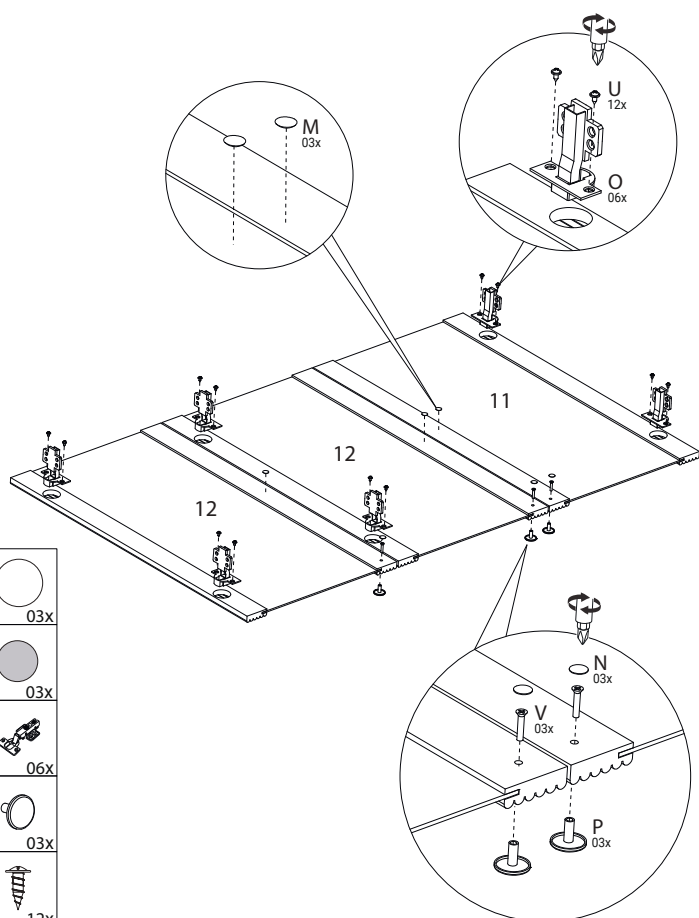
09



10



11



12

