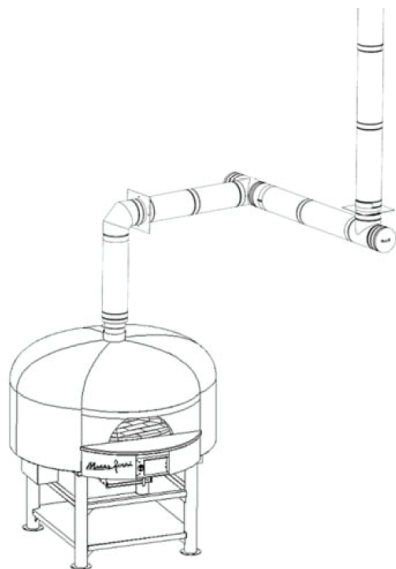


Marra Forni Venting Marra Forni Ventilation and Flue Pipe



► Overview

Our factory built exhausts are suitable for use in the removal of smoke and grease laden vapors from commercial, institutional, industrial, and similar type of applications where Marra Forni ovens are in use.

The modular exhaust systems incorporate a steel to steel conical joint and clamp system for quick and easy assembly in the field. The conical joint is tapped in place creating a gas and liquid tight seal where sealant is not needed. The conical joints have a 2.2" wide steel to steel surface overlap area at each connection allowing greater stiffness, sealing, and durability over ½" flange to flange systems.

► Features

- Easier to clean than field welded rectangular
- Reduced clearance to combustibles
- Reduced outer pipe skin temperatures
- Reduced building heat gain
- Increased efficiencies of energy recovery systems
- Reduced noise levels caused by high velocity exhausts



► Benefits

- All required UL Listing
- All stainless – even the supports
- Best Warranty – 25 Years
- We have in stock – 6" through 18" diameters, standard 5 days or less shipping
- Best Stainless – Type 444 stainless inner, better than 304 and 316 stainless
- Best Insulation – 1.5" thick SuperWool Plus compressed down to 1.25"

► UL Listings

- UL-1978 Standard, Grease Duct for liquid tight joints and 2000°F for 30 minutes
- ULC-S662, (Canadian) Standard for Factory-Built Grease
- UL-2561 Standard, 1400F Chimney Listing/ ULC/ORDC959 Industrial Type 760°C Chimney
- UL-103 Standard, Building Heating Appliance Chimney Listing
- ULC/ORD-C959 Industrial Type 540°C Chimney
- UL-103 Standard, Additional Positive Pressure Listing
- up to 90" W.C.
- UL-103 Standard, Additional Type HT Listing, 1000°F and 2100°F for 10 minutes
- 0.035" Thick 444 stainless steel inner liner, 1.5" ceramic fiber blanket compressed to 1.25",
- and 430 stainless steel outer jacket with all stainless steel supports and accessories.

► Enclosures & Clearances

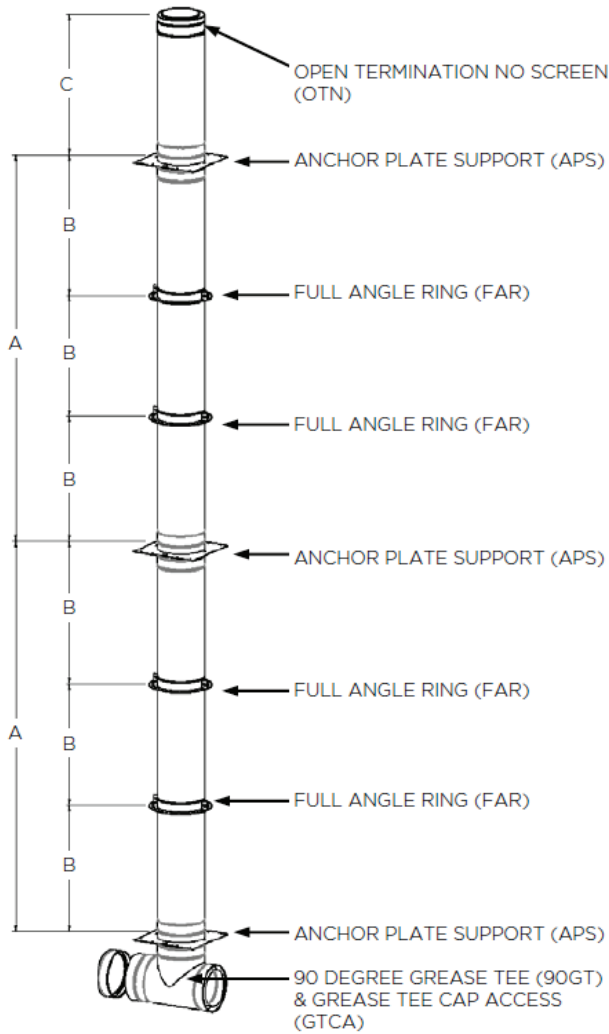
Marra Forni's ventilation is intended to be installed unenclosed or with noncombustible enclosures, and is not for use in one or two story family dwellings.

If the Chimney or Grease Duct passes through any zone or story of a building outside of which the connected appliance or hood is located, it is to be enclosed in non-combustible construction having a fire rating equal to or greater than that of the wall or ceiling through which it passes. Check with the local code authority (AHJ) for material with an appropriate fire rating.

Where, according to local code, no chase enclosure is required, Model DWKL may be installed adjacent to a wall of combustible construction at the minimum airspace clearance specified on each pipe section and in the individual Listing as shown in the following tables.

Marra Forni Venting Marra Forni Ventilation and Flue Pipe

▶ Maximum Vertical Support Spacing



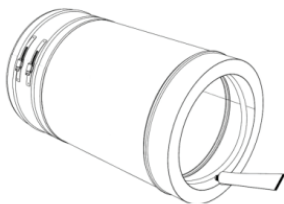
▶ Vertical Support Spacing Limitations (Dim A)

Vertical Support Method / Part Nos. Diameter	Dim A - Maximum Support Height	
	DWKL	DWKL-Lt
Anchor Plate Support / APS		
3" - 6" (76 - 152mm)	300' (91.4m)	300' (91.4m)
7" - 10" (178 - 254mm)	208' (63.3m)	248' (75.5m)
11" - 13" (279 - 330mm)	162' (49.3m)	194' (59.1m)
14" - 18" (356 - 457mm)	119' (36.2m)	142' (43.2m)
20" - 24" (508 - 610mm)	90' (27.4m)	108' (32.9m)
26" - 30" (660 - 762mm)	88' (26.8m)	DNA
32" - 36" (813 - 914mm)	86' (26.2m)	DNA
Anchor Plate Support with Heavy Duty Base / APS & HDB		
3" - 6" (76 - 152mm)	300' (91.4m)	300' (91.4m)
7" - 10" (178 - 254mm)	300' (91.4m)	300' (91.4m)
11" - 13" (279 - 330mm)	300' (91.4m)	300' (91.4m)
14" - 18" (356 - 457mm)	224' (68.2m)	269' (81.9m)
20" - 24" (508 - 610mm)	170' (51.8m)	205' (62.4m)
26" - 30" (660 - 762mm)	111' (33.8m)	DNA
32" - 36" (813 - 914mm)	93' (28.3m)	DNA
Anchor Plate Support with Wall Bracket / APS & WB		
3" - 6" (76 - 152mm)	70' (21.3m)	81' (24.6m)
7" - 10" (178 - 254mm)	44' (13.4m)	52' (15.8m)
11" - 13" (279 - 330mm)	34' (10.3m)	41' (12.4m)
14" - 18" (356 - 457mm)	25' (7.6m)	30' (9.1m)
20" - 24" (508 - 610mm)	19' (5.7m)	23' (7.0m)
26" - 30" (660 - 762mm)	12' (3.7m)	DNA
32" - 36" (813 - 914mm)	10' (3.0m)	DNA

* DWKL is the designation model number for Marra Forni's Double Wall conical Grease Duct and Chimney system

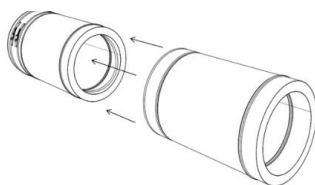
▶ Step 1

Clean inner side of each inner liner inner liner.



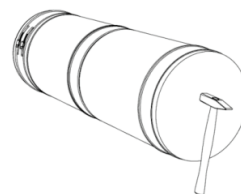
▶ Step 2

Clean inner side of each inner liner inner liner.



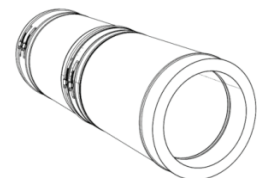
▶ Step 3

Clean inner side of each inner liner inner liner.



▶ Step 4

Clean inner side of each inner liner inner liner.



Visit MarraForni.com for more information