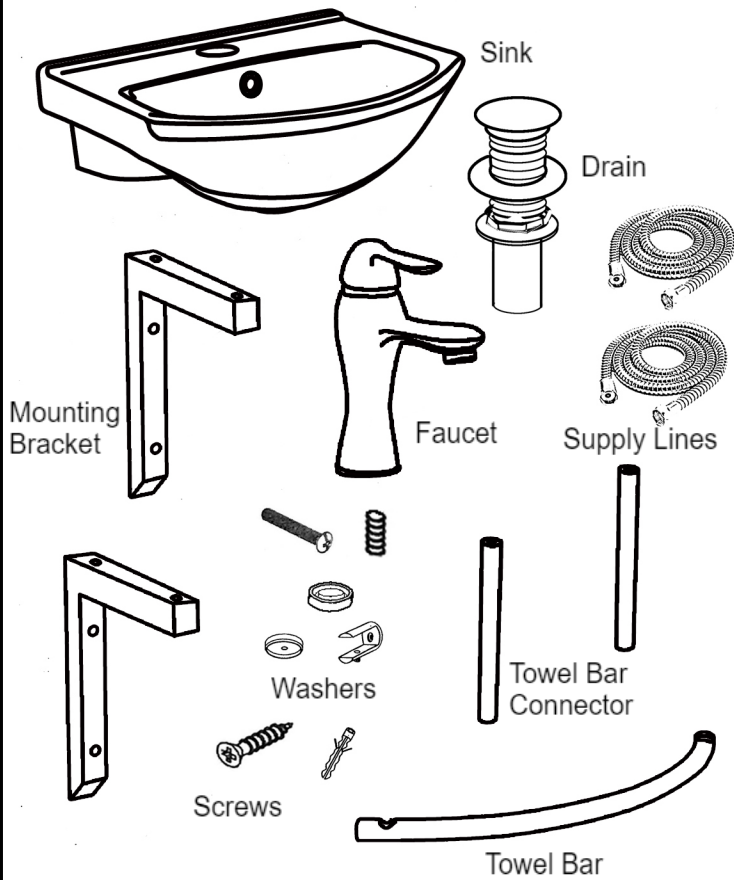
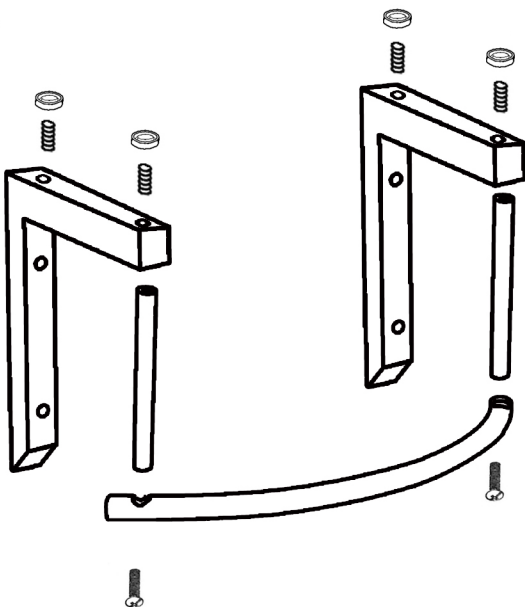


#22227/#33337 Assembly Guide

1.

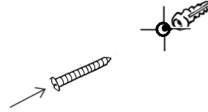


2.

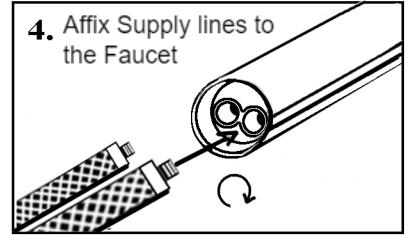


Place bracket on the wall and secure by tightening set screw as shown above. Assemble the towel bar and tighten the screws to finish towel bar assembly.

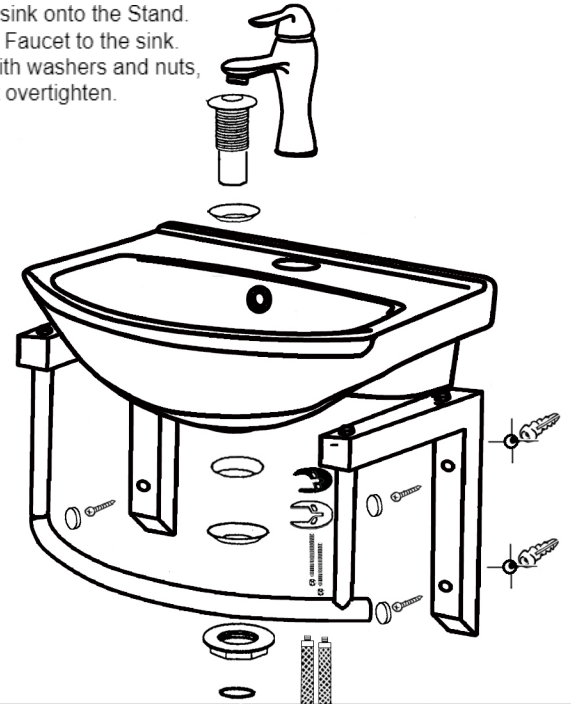
3. Adjust the screws and tightened it with caps



4. Affix Supply lines to the Faucet

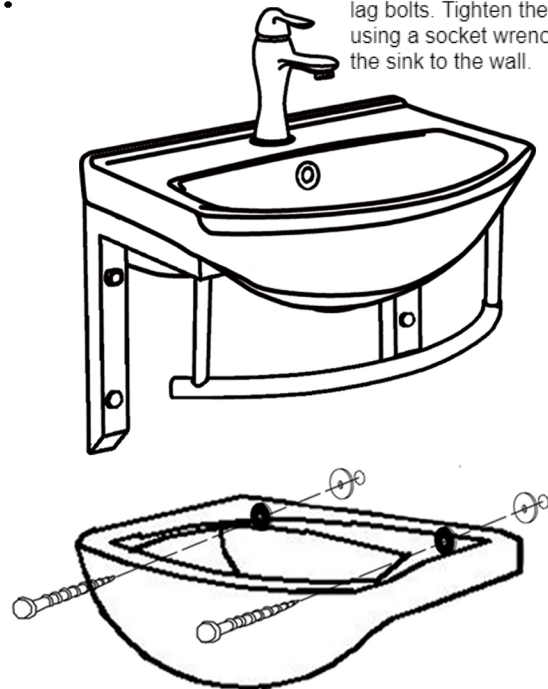


5. Place the sink onto the Stand. Assemble Faucet to the sink. Firm up with washers and nuts, but do not overtighten.



6.

Attach the sink to the wall using lag bolts. Tighten the lag bolts using a socket wrench to secure the sink to the wall.



Renovator's Supply recommends examining your product immediately upon receipt for any defects & report any damage to customers service cs@rensup.com or 1-800-659-2211 within the time limit and terms