

(PH) R E A L

Session Objectives

By the end of this interactive webinar, current and future leaders will be able to:

- Develop a philosophy of life so you can determine your definition of success
- Nourish your relationships and show that they matter
- Build a culture of trust so you can fail forward without fear
- Set your own attitude so you won't be blown around by the winds of change
- Pick up tools to lead yourself first

APPLY

CHANGE

TEACH/TRAIN/TRANSFER



PHILOSOPHY

RELATIONSHIPS

EQUIPPING

ATTITUDE

LEADERSHIP



(PH)ilosophy







Inspector General

"A typical IG is a man past middle age, spare, wrinkled, cold, passive, non-committal, with a codfish, polite in contact, but at the same time responsive, calm, and damnably composed. He is a concrete post or a plaster of paris cast, a human petrification with a heart of feldspar and without charm or friendly germ, minus bowels, passion, or sense of humor. Happily, they never reproduce. All of them finally go to hell."

-- Gen George S. Patton, Jr.









Relationships







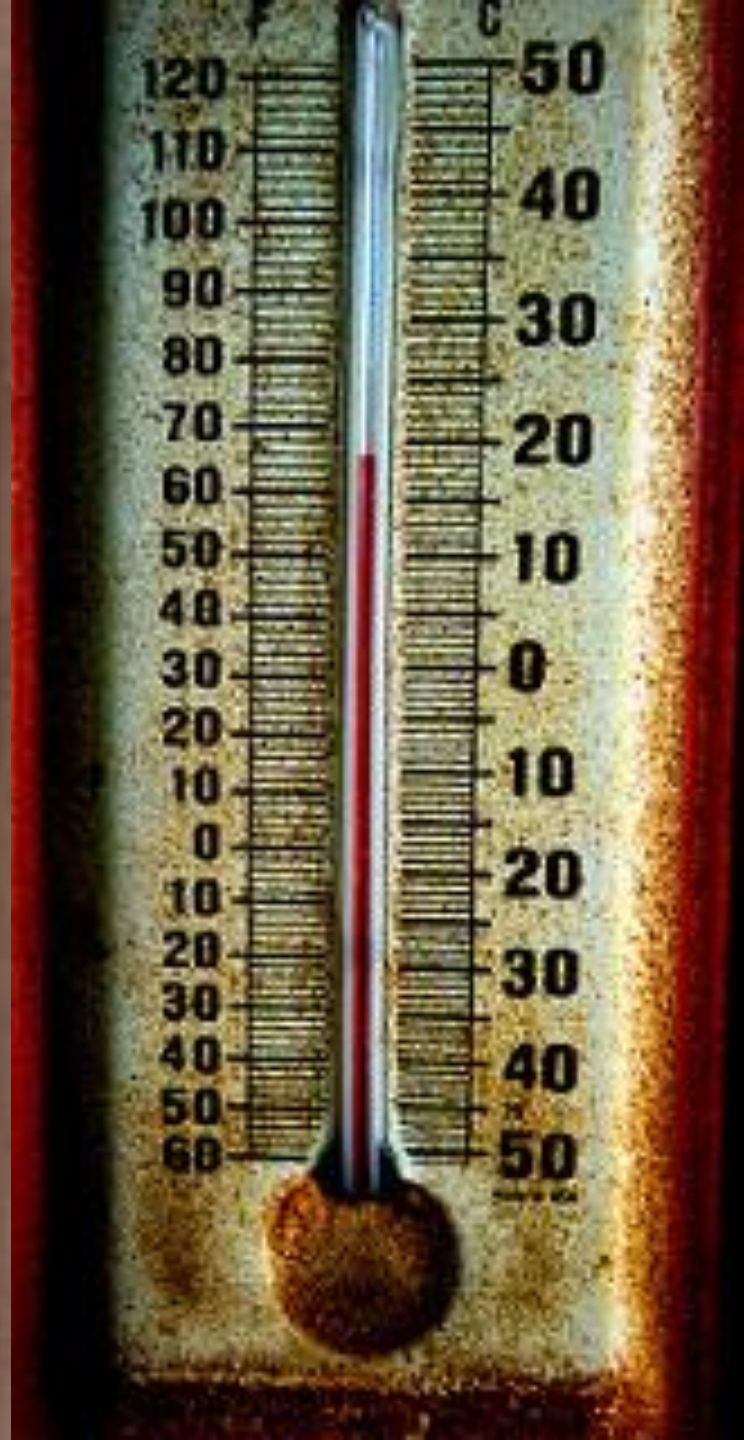
Equipping







Attitude





*Everything Rises
and
Falls on Leadership*

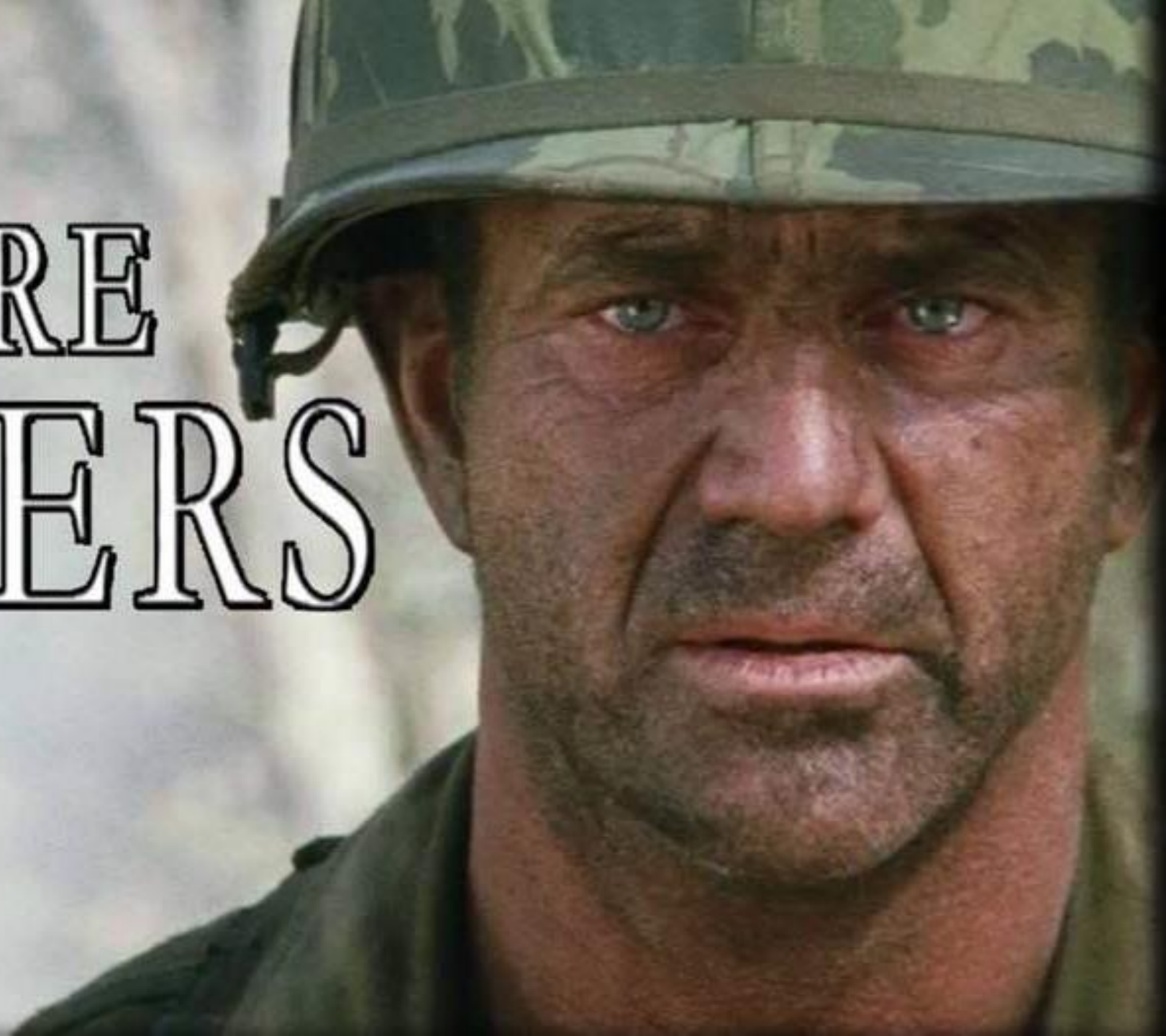
John C. Maxwell



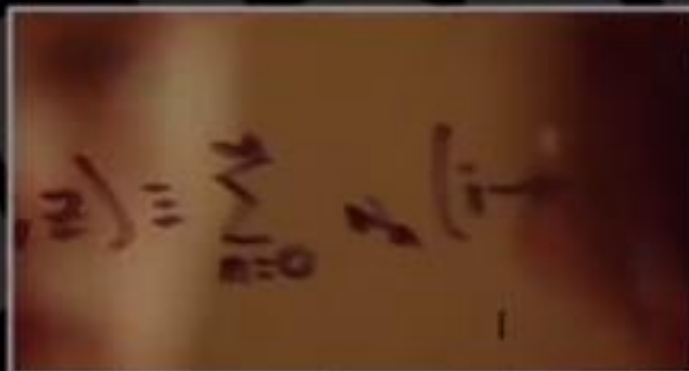
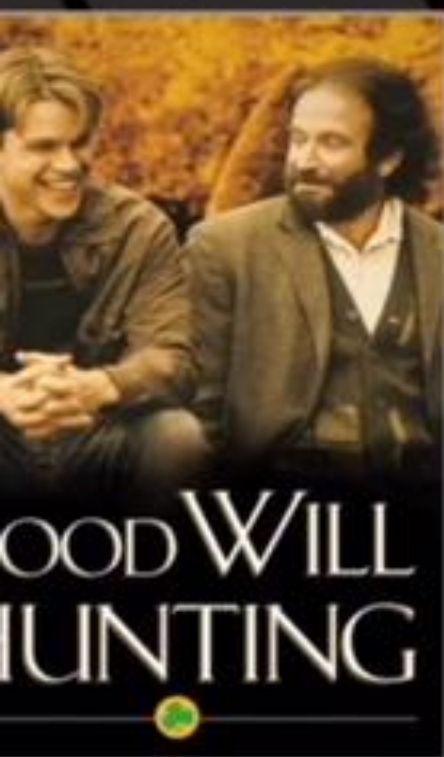




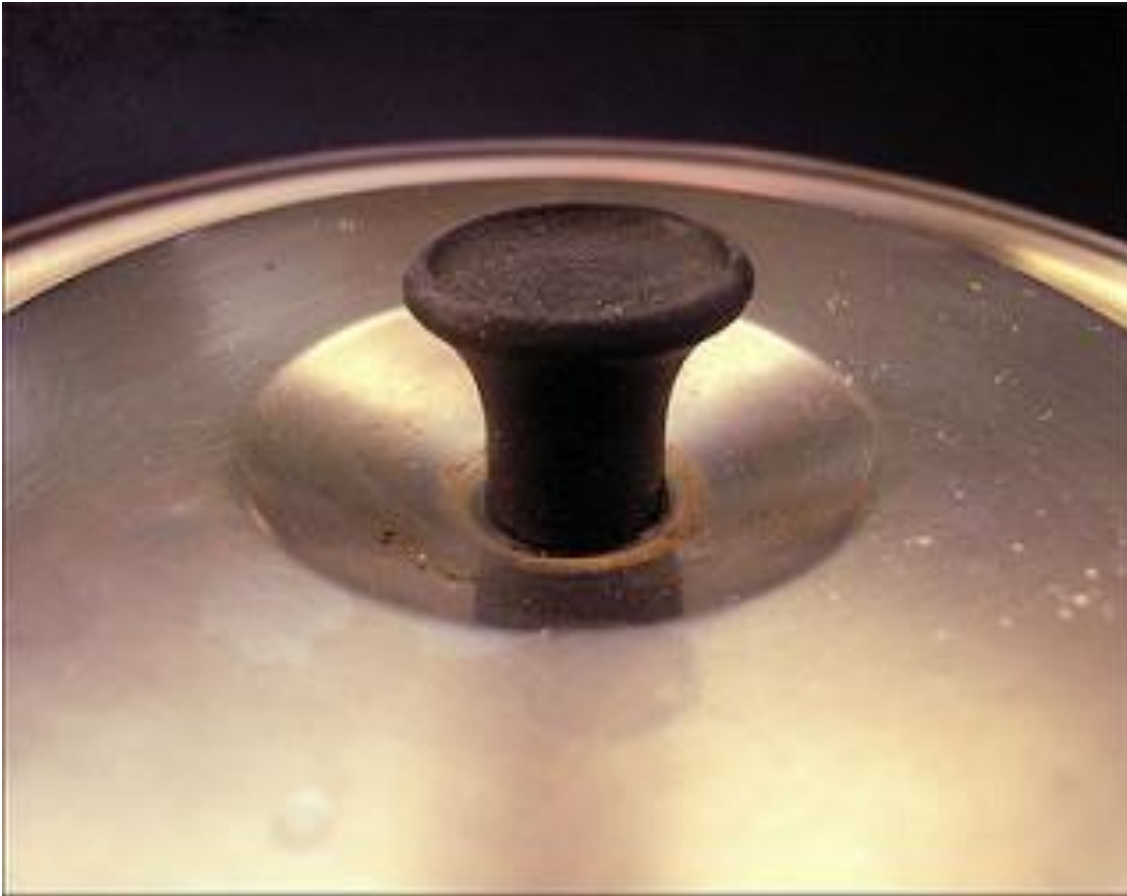
WERE
DIERS







Law of the Lid



Law of Influence



Law of Process



PHILOSOPHY

RELATIONSHIPS

EQUIPPING

ATTITUDE

LEADERSHIP



What Are Your Questions?



Selected Resources for Further Exploration

National Institute of Corrections (NIC)



www.nicic.gov

