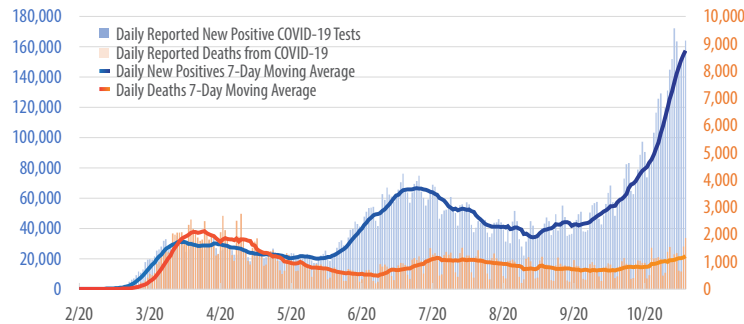


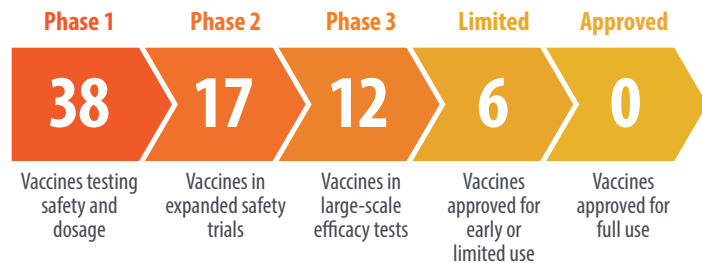
# First Trust COVID-19 TRACKER

## Daily Reported New Positive COVID-19 Tests vs. Daily Reported Deaths from COVID-19 in the U.S.

February 26, 2020 - November 18, 2020



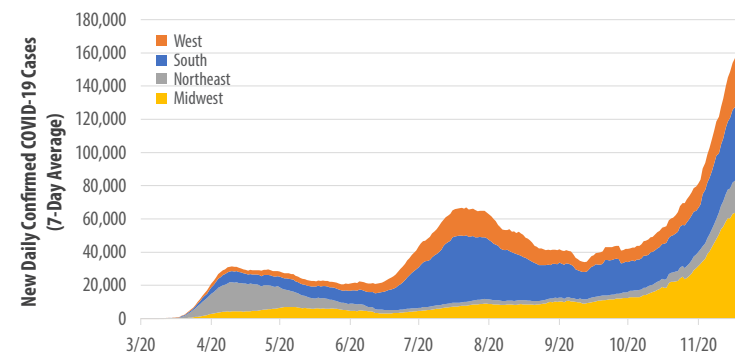
Source: Covidtracking.com



Source: The New York Times. Data as of November 18, 2020.

## Daily Reported New Positive COVID-19 Cases by U.S. Region

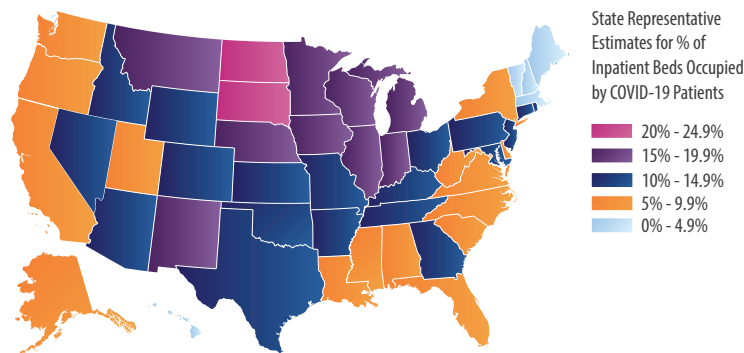
March 1, 2020 - November 18, 2020



Sources: 91-DIVOC.com, Johns Hopkins University CSSE

## State Representative Estimates for Hospital Bed Occupancy

As of November 17, 2020



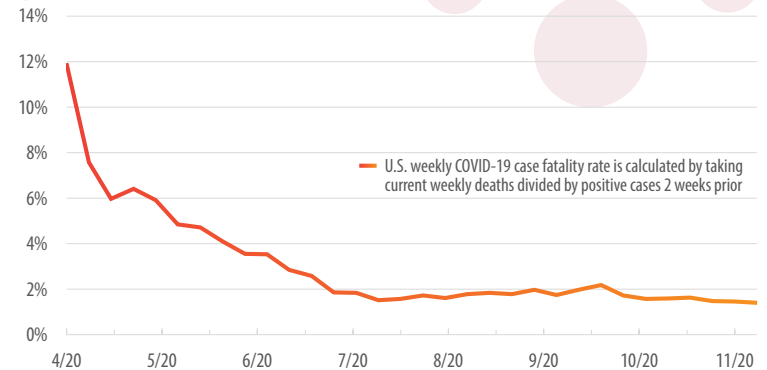
Source: HHS.gov

<sup>1</sup>AHA.org; <sup>2</sup>nytimes.com (November 17, 2020)

On April 15, 2020, the Centers for Medicare & Medicaid Services (CMS) released guidance implementing several provisions included in the CARES Act. One of them included a Medicare add-on payment of 20% for both rural and urban inpatient hospital COVID-19 patients.<sup>1</sup>

## U.S. Weekly COVID-19 Case Fatality Rate

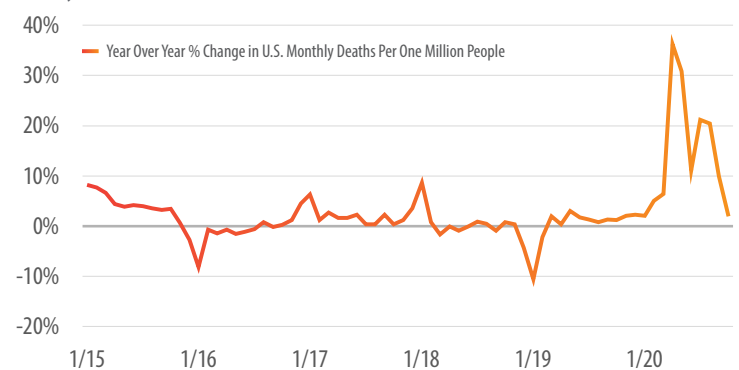
April 12, 2020 - November 15, 2020



Source: Covidtracking.com

## Tracking Changes in U.S. All-Cause Mortality

January 1, 2015 - October 31, 2020

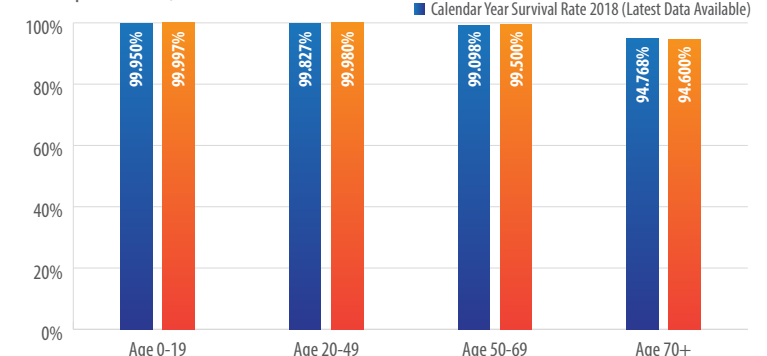


Sources: CDC, Census Bureau

A new study has found that **eight months after infection, most people who have recovered from COVID-19 still have enough immune cells to fend off the virus and prevent illness. A slow rate of decline in the short term suggests these cells may persist in the body for a very, very long time to come.**<sup>2</sup>

## COVID-19 Infection Survival Rates vs. Overall Survival Rates in 2018

As of September 10, 2020



Sources: First Trust Advisors, CDC.gov, Census.gov