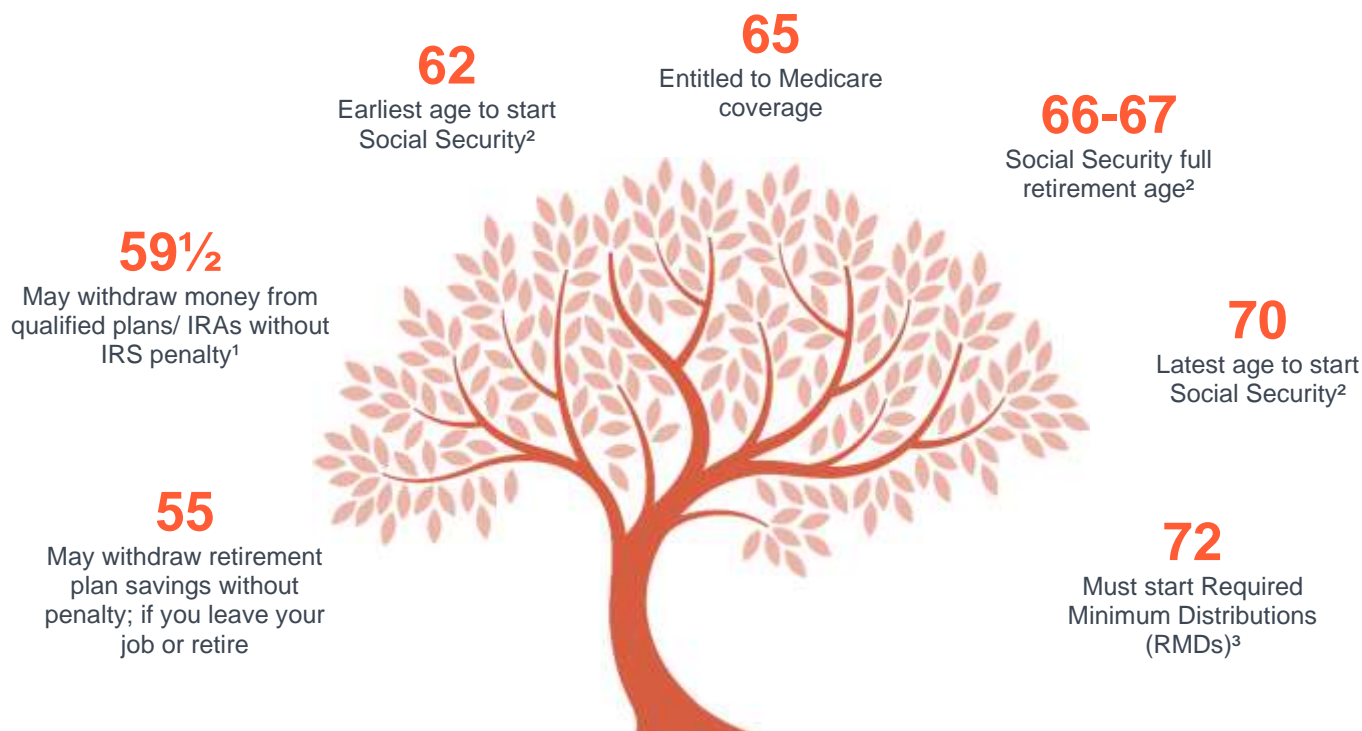


# Key Dates as You Approach Retirement

At what age can retirement plan distributions begin? When can a person begin to receive Social Security? As you get closer to your retirement date you may start to wonder about your eligibility for certain withdrawals and programs you are entitled to. Refer to this timeline to remember important dates as you get closer to retirement.



**If you have questions about your withdrawal options as you near retirement, please contact Fiduciary Plan Partners at (646) 974- 4401 or [info@fiduciarypp.com](mailto:info@fiduciarypp.com)**

<sup>1</sup>If the retirement plan allows.

<sup>2</sup>Partial, full or late retirement age is based on the year you were born. See [ssa.gov](http://ssa.gov) for details.

<sup>3</sup>If a participant in a qualified plan is still employed and not a greater than 5 percent owner, they are not required to start minimum distributions from that plan until they retire.

Distributions before the age of 59½ may be subject to an additional 10% early withdrawal penalty.

Distributions and withdrawals are subject to ordinary income taxes.

Source: Principal Financial Group

This material was created to provide accurate and reliable information on the subjects covered but should not be regarded as a complete analysis of these subjects. It is not intended to provide specific legal, tax or other professional advice. The services of an appropriate professional should be sought regarding your individual situation. The "Retirement Times" is published monthly by Retirement Plan Advisory Group's marketing team. This material is intended for informational purposes only and should not be construed as legal advice and is not intended to replace the advice of a qualified attorney, tax adviser, investment professional or insurance agent. (c) 2018. Retirement Plan Advisory Group.

Fiduciary Plan Partners is not affiliated with Retirement Plan Advisor Group but subscribe to its annual services offering.