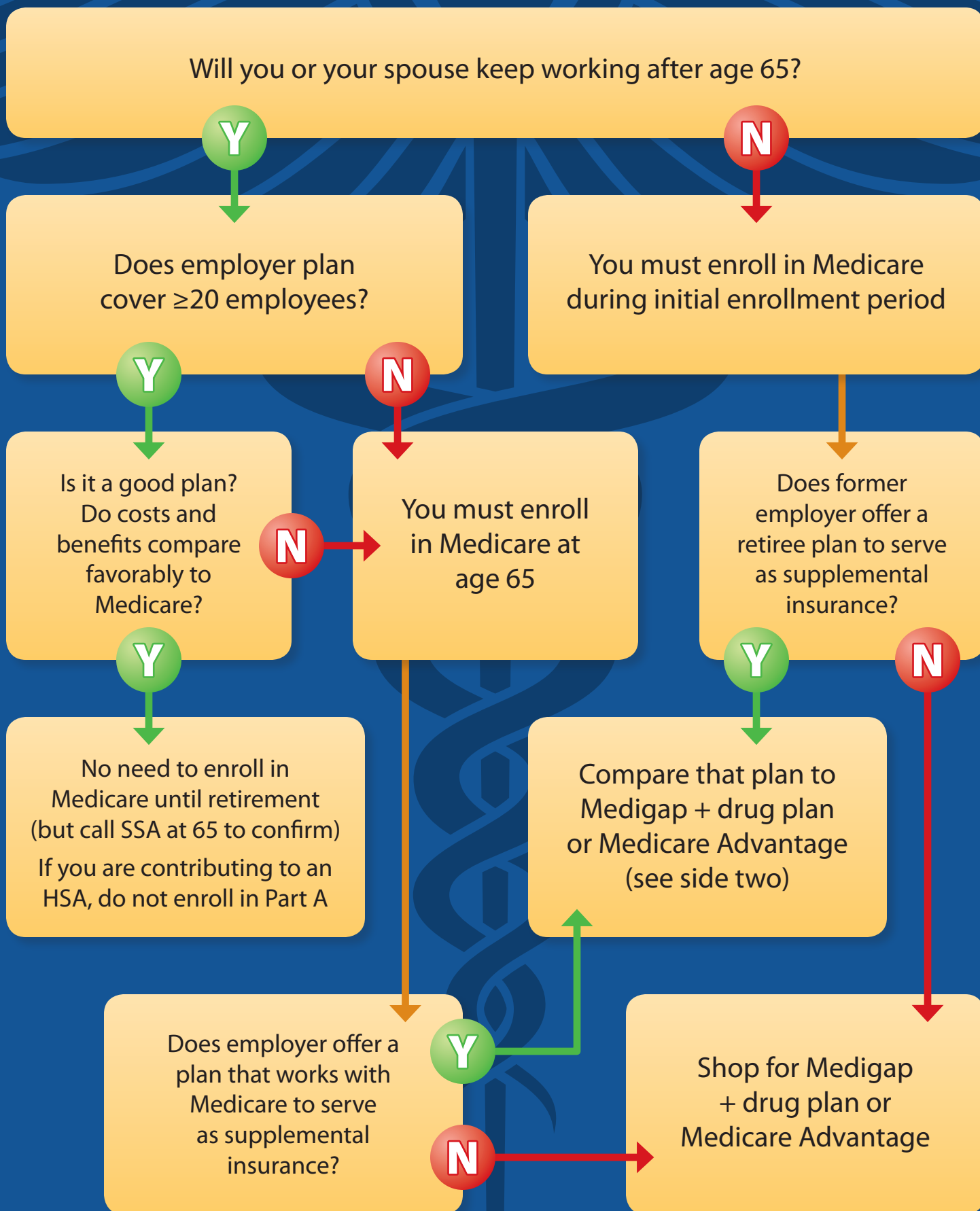


Medicare Enrollment Planning



Steps to take when comparing Medicare to 20+ employer insurance

STEP 1: Talk to your employer to see if your current insurance will change at age 65.

STEP 2: Gather all documents pertaining to your employer-sponsored insurance.

STEP 3: Find a comparable Medicare plan—either traditional Medicare A, B, D plus Medigap, or a Medicare Advantage plan.

STEP 4: Figure out which plan is a better value by comparing prices and benefits.

STEP 5: Consider other factors, such as spousal insurance, whether you'd have to change your doctors, etc.

STEP 6: Get a second opinion from a trusted insurance agent or consultant.

Considerations

- Can you see the doctor you want? Are the right specialists available if you need them?
- How much will you have to pay for your medications?
- What are the monthly premiums?
- What other out-of-pocket costs might you incur based on your expected health care usage?
- Are family benefits important? If the decision to go off the employer plan would affect your spouse's insurance, add the cost of spouse's coverage to your analysis.

To enroll in Medicare, visit ssa.gov/benefits/medicare or call (800) 772-1213

Jacques Lucchesi, CPFA
Financial Advisor
WestGate Wealth Strategies

62 Court Street
Newton, MA 02458

(857) 524-2637

jlucchesi@Westgate-Wealth.com
www.WestGate-Wealth.com



Securities and advisory services are offered through Cetera Advisor Networks LLC (doing insurance business in CA as CFGAN Insurance Agency LLC, CA Insurance License # 0644976) member FINRA/SIPC, a broker-dealer and registered investment adviser. Branch located at 62 Court St, Newton, MA 02458. Cetera is under separate ownership from any other named entity.