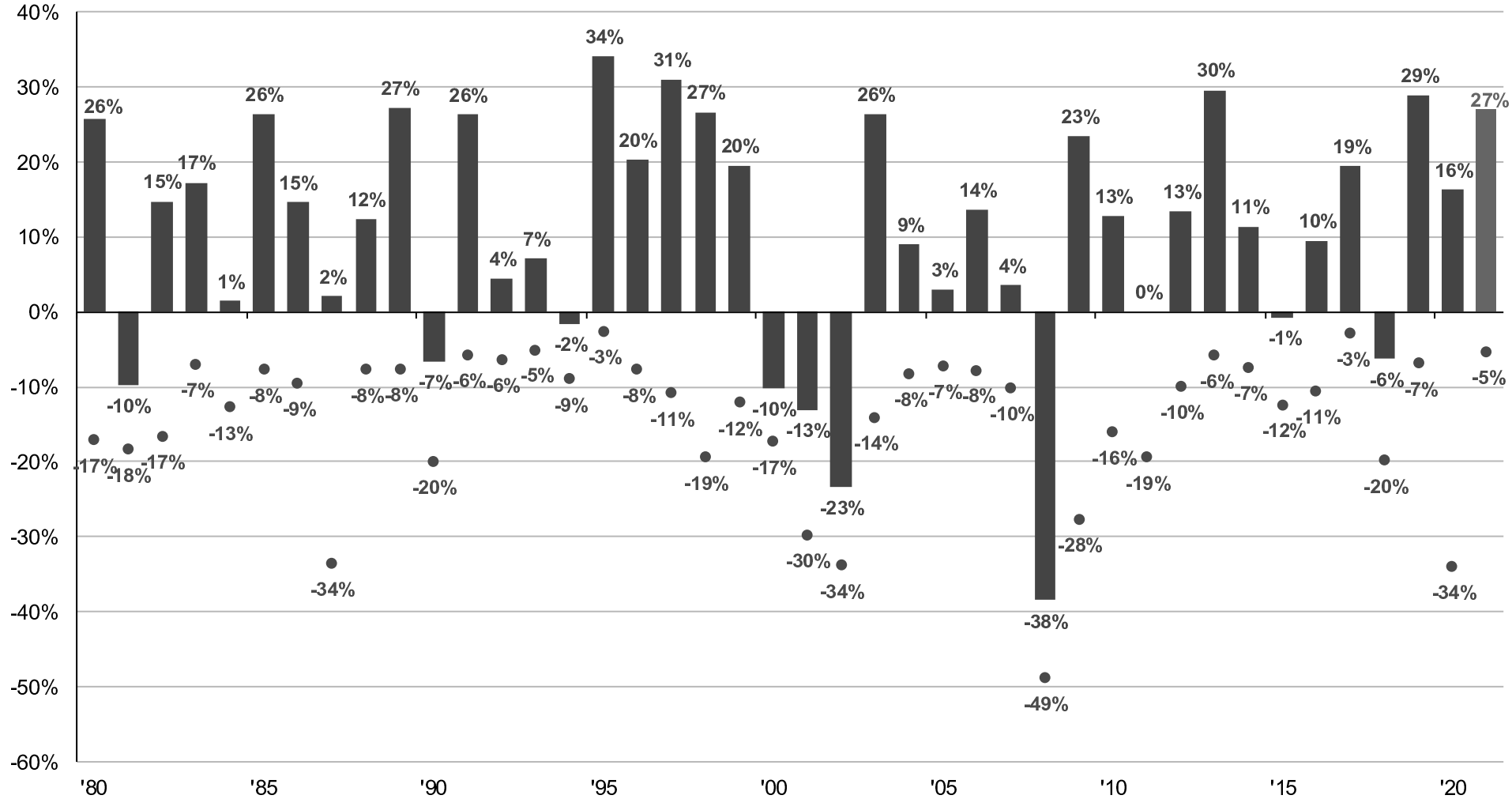




# Annual returns and intra-year declines

## S&P intra-year declines vs. calendar year returns

Despite average intra-year drops of 14.0%, annual returns were positive in 32 of 42 years



Source: FactSet, Standard & Poor's, J.P. Morgan Asset Management.  
 Returns are based on price index only and do not include dividends. Intra-year drops refers to the largest market drops from a peak to a trough during the year. For illustrative purposes only. Returns shown are calendar year returns from 1980 to 2021, over which time period the average annual return was 9.4%.  
 Guide to the Markets – U.S. Data are as of December 31, 2021.