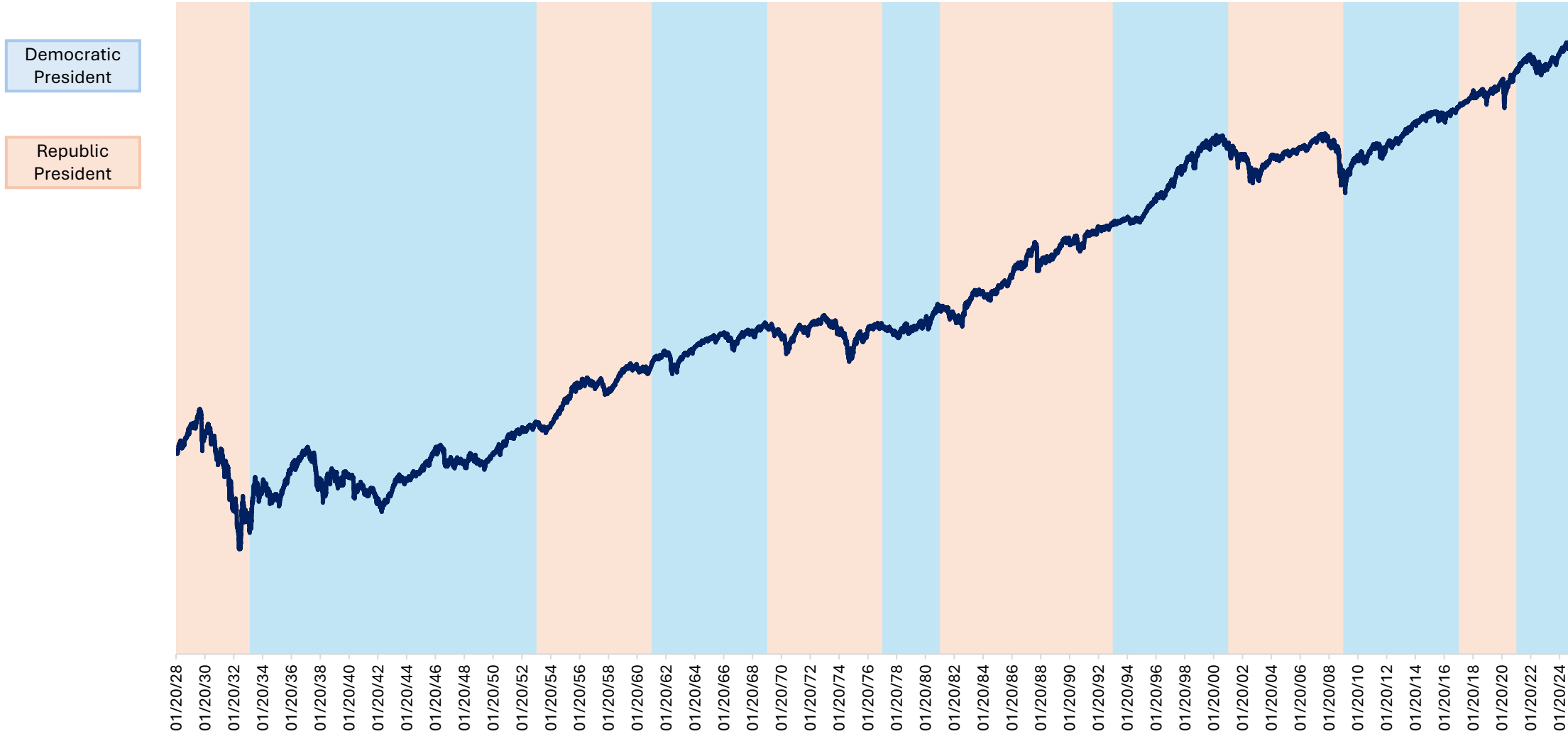


Markets & Elections

Content Created by The McConachie Team
as of August 31, 2024

Looking Long-Term

Logarithmic price performance of S&P 500 segmented between democratic and republican presidents

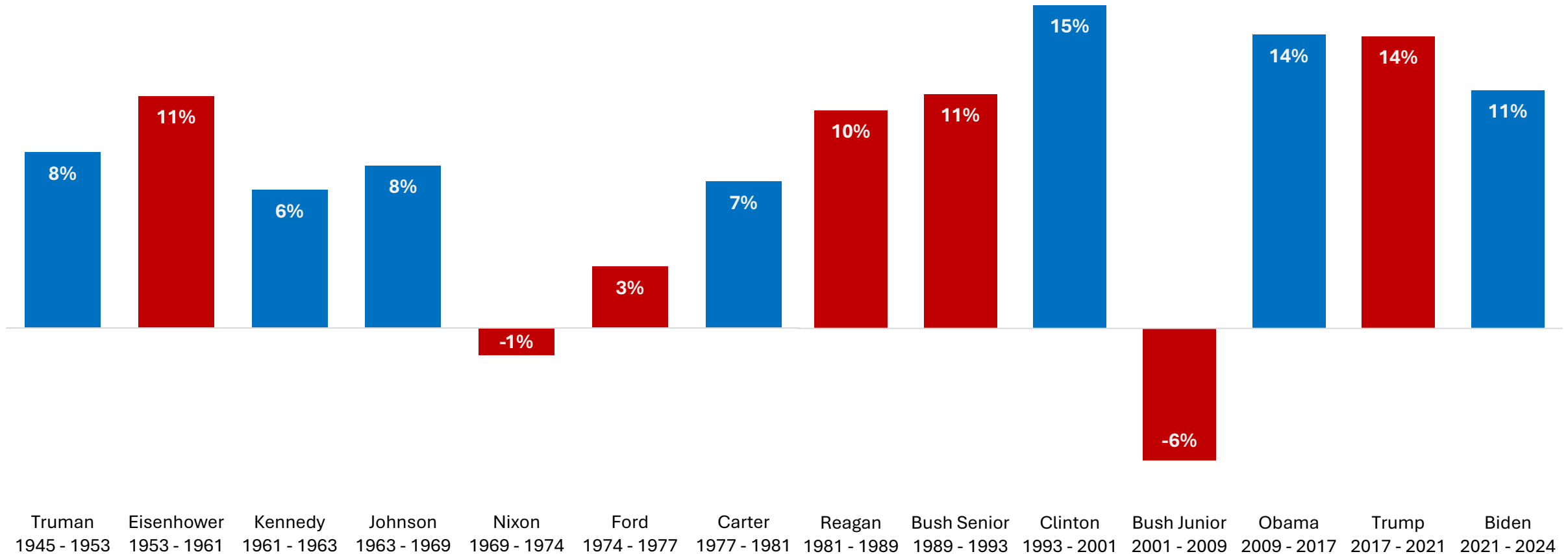


S&P 500 historical price information (from 1928 – 2024) provided by FactSet

Presidential Suite Returns

S&P 500's annualized price return for each president during their time in office.

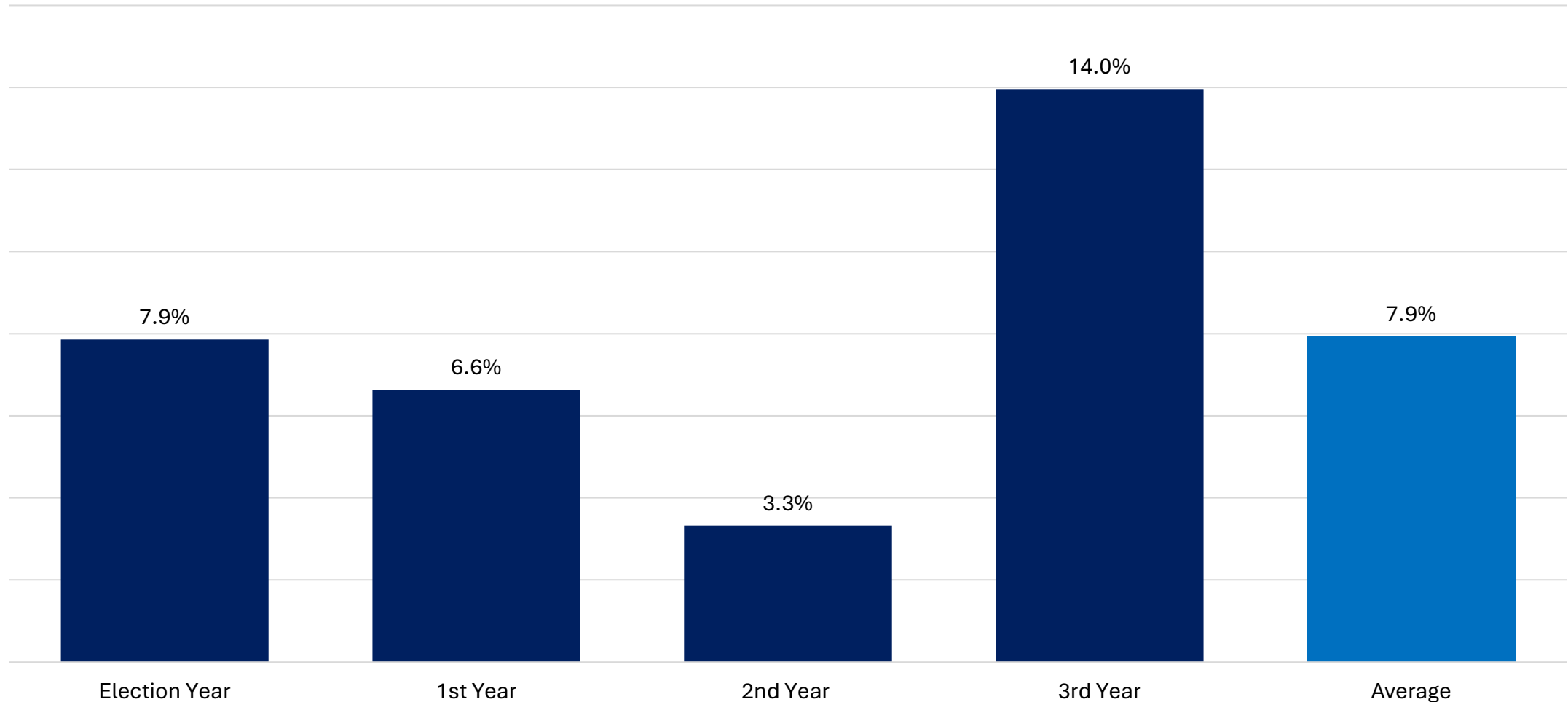
Note: Nixon dealt with inflation, an oil embargo, and recession in 1973-75; and Bush Junior took office just as the Dot-com bubble was bursting in 2001 and endured the 2008 Great Financial Crisis



**Through August 2024*

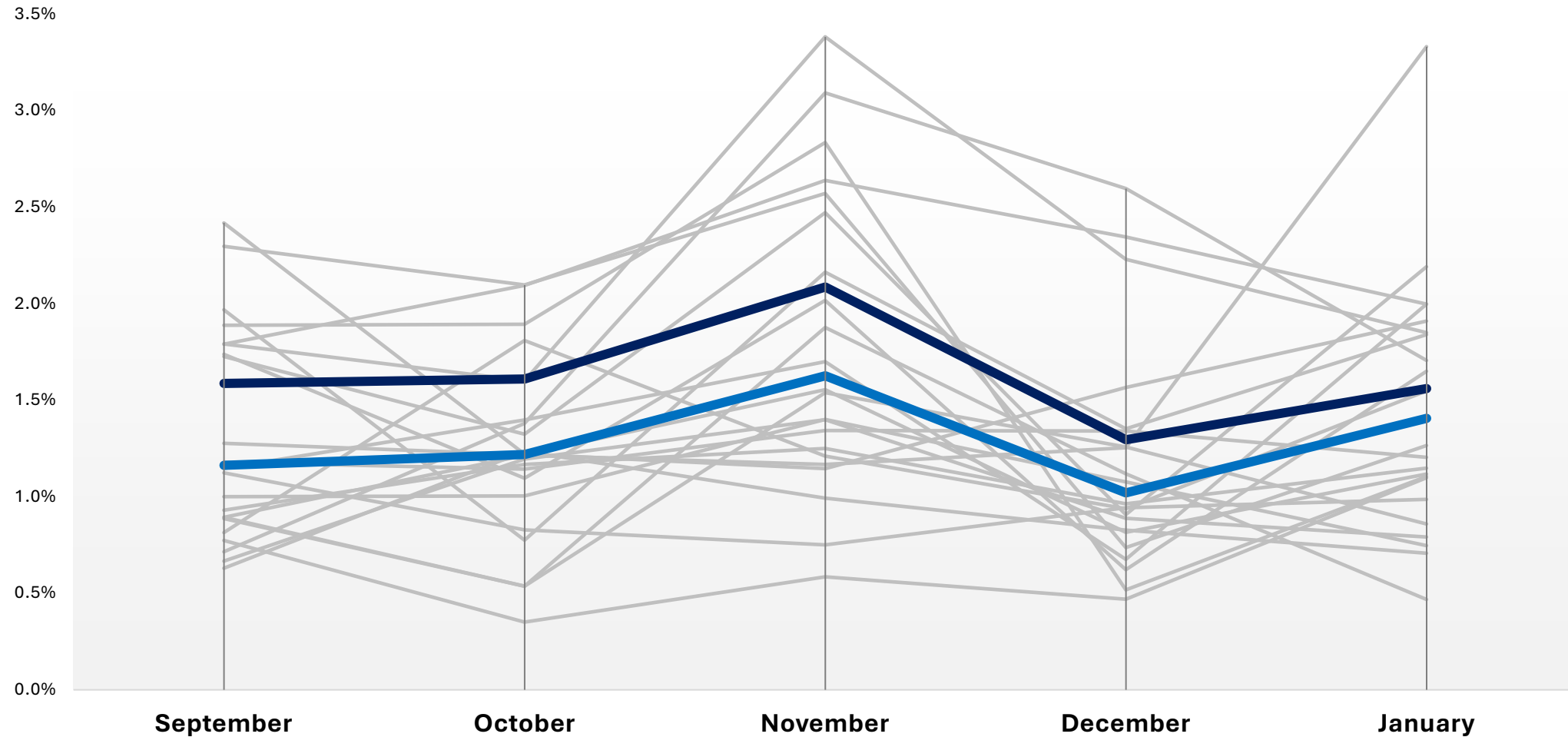
Just Another Year in the Market

S&P 500 price returns by year, relative to stage of election, from January 1928 to August 2024



A Volatile Time

Standard deviation of the S&P 500 as a % of the index level, for the months surrounding election

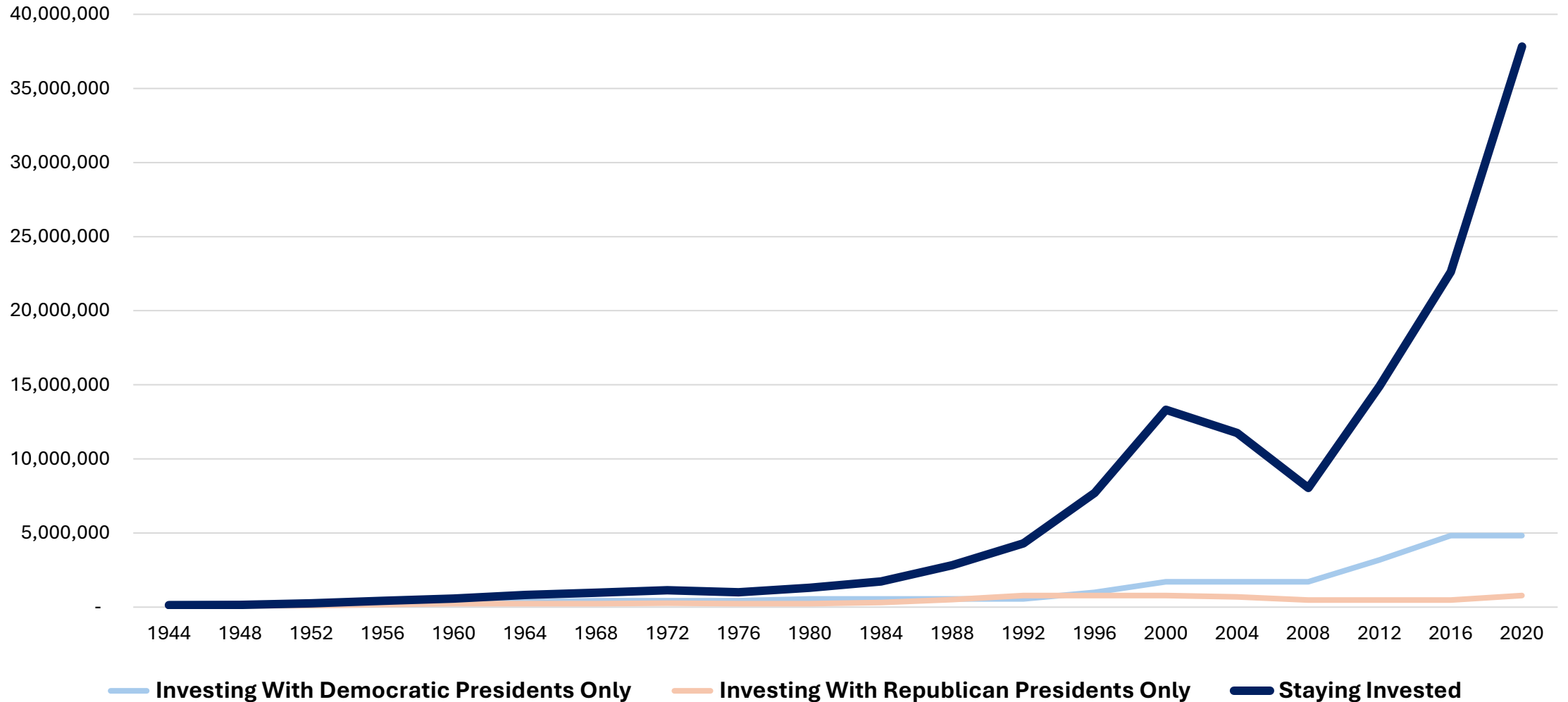


S&P 500 historical price information (from 1928 – 2024) provided by FactSet

*1932 and 2008 election activity not shown above as they lie outside axis bounds, information is still included in the average and median calculation

Elect Staying Invested

Comparing \$100k invested in the S&P 500 during only Democratic or Republican presidents, vs. staying invested



Disclosure

Securities, investment advisory, and financial planning services offered through qualified registered representatives of MML Investors Services, LLC, Member SIPC (www.sipc.org). Supervisory Office: 100 South Fifth Street, Suite 2300, Minneapolis, MN 55402. 612-333-1413. Charterpoint Wealth Strategies | The McConachie Team is not a subsidiary or affiliate of MML Investors Services, LLC or its affiliated companies. CRN202709-7157111