

# Breed's Hill Newsletter

## Planning Your Financial Future

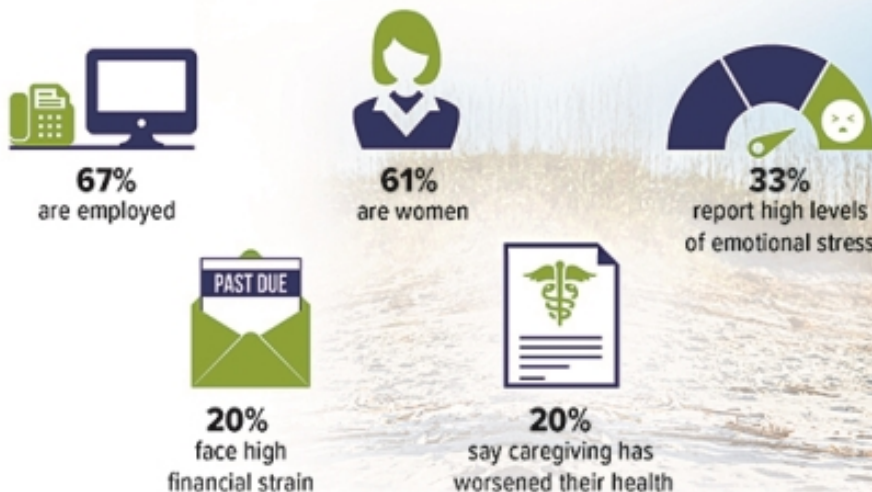
Dan Novotny, CRPC®, CFS®  
Investment Advisors  
Breed's Hill Wealth Management  
Kirk Tassell, CFP®  
301 North Park Avenue, Suite A • Winter Park • FL  
800-599-5077 • 800-599-0338  
dnovotny@breedshillwm.com • www.breedshillwm.com



## Sandwich Generation Caregivers Face Many Challenges

Individuals in the "sandwich generation" have the dual responsibility of providing care for an adult — often a parent — while also raising children. Caring for others can be very rewarding, but the day-to-day demands of supporting multiple generations can take a financial, emotional, and physical toll on sandwiched caregivers.

### Profile of Sandwiched Caregivers



Source: National Alliance for Caregiving, 2019

# Incapacity and Advance Medical Directives

At some point in your life, you may lose the ability to make or communicate responsible health-care decisions for yourself. Without directions to the contrary, medical professionals are generally compelled to make every effort to save and sustain your life. Depending on your attitude toward various medical treatments and your views on the quality of life, you may wish to take steps now to control future health-care decisions with one or more advance medical directives.

## What Is an Advance Medical Directive?

The laws of your state may allow you to adopt one or more advance medical directives to manage your future medical care. There are three main types of advance medical directives: (1) a living will, (2) a durable power of attorney for health care, and (3) a do-not-resuscitate order. Each has unique characteristics and is useful under specific circumstances. You may find that one, two, or all three advance medical directives are necessary to express all your wishes regarding medical treatment.

## Living Will

A living will is a legal document that specifies the types of medical treatment you would want, or not want, under particular circumstances. In most states, a living will takes effect only under certain circumstances, such as a terminal illness or injury. Generally, one can be used solely to decline medical treatment that "serves only to postpone the moment of death."

## Durable Power of Attorney for Health Care/Health-Care Proxy

A durable power of attorney for health care (DPAHC), also known as a health-care proxy, is a legal document in which you appoint a representative to make medical decisions on your behalf if you become unable to make or communicate them yourself. It allows you to exercise control over your health care through this representative, who will have the authority to make most medical care decisions for you.

You may want to appoint such a representative to act on your behalf. If you don't, medical professionals will generally be compelled to do everything possible to save and sustain your life. A DPAHC can resolve conflicts and help ensure that your choices regarding medical treatment are respected. A DPAHC may not be practical in an emergency — your representative must be present to act on your behalf.

## Do-Not-Resuscitate Order

A do-not-resuscitate (DNR) order is a legally binding order, signed by both you and your physician, that directs medical personnel not to perform cardiopulmonary resuscitation (CPR) or other invasive procedures on you if you stop breathing or your heart stops beating. A DNR is the only advance medical directive specifically intended for use in an emergency. There are two types of DNRs: One is effective only while you are hospitalized; the other is used by people outside the hospital. ID bracelets, MedicAlert® necklaces, and wallet cards are some methods of noting DNR status.

## More to Consider

- The laws on advance medical directives vary considerably from state to state. If you spend a significant amount of time in a state other than where you live, you may want to research that state's laws as well.
- Review your advance medical directives periodically to ensure they reflect your current wishes and attitude.
- Discuss your advance medical directives with appropriate persons (perhaps your doctor, your DPAHC representative, your family, and your friends).
- If you have multiple advance medical directives, make sure your instructions are stated consistently throughout. In many states, the most recent document prevails in case of a conflict.

---

## Incapacity and Advance Medical Directives

### ADVANCE MEDICAL DIRECTIVE

Living will

Durable power of attorney for health care

Do-not-resuscitate order



### USED TO

Decline medical treatment for terminal illness or injury

Appoint representative to make medical decisions for you

Direct medical personnel not to perform CPR

# Five Investment Tasks to Tackle by Year-End

Market turbulence in 2020 may have wreaked havoc on your investment goals for the year. It probably also highlighted the importance of periodically reviewing your investment portfolio to determine whether adjustments are needed to keep it on track. Now is a good time to take on these five year-end investment tasks.

## 1. Evaluate Your Investment Portfolio

To identify potential changes to your investment strategy, consider the following questions when reviewing your portfolio:

- How did your investments perform during the year? Did they outperform, match, or underperform your expectations?
- What factor(s) caused your portfolio to perform the way it did?
- Were there any consistencies or anomalies compared to past performance?
- Does money need to be redirected in order to pursue your short-term and long-term goals?
- Is your portfolio adequately diversified, and does your existing asset allocation still make sense?

## 2. Take Stock of Your Emergency Fund

When you are confronted with an unexpected expense or loss of income, your emergency fund can serve as a financial safety net and help prevent you from withdrawing from your investment accounts or being forced to pause your contributions.

If you haven't established a cash reserve, or if the one you have is inadequate, consider how you might build up your cash reserves. A good way to fund your account is to earmark a percentage of your paycheck each pay period. You could also save more by reducing your discretionary spending or directing investment earnings to your emergency account.

## 3. Consider Rebalancing

A year-end review of your overall portfolio can help you determine whether your asset allocation is balanced and in line with your time horizon and goals. If one type of investment performed well during the year, it could represent a greater percentage of your portfolio than you initially wanted. As a result, you might consider selling some of it and using that money to buy other types of investments to rebalance your portfolio. The process of rebalancing typically involves buying and selling securities to restore your portfolio to your targeted asset allocation based on your risk tolerance, investment objectives, and time frame. For example, you might sell some securities in an overweighted asset class and use the proceeds to purchase assets in an underweighted asset class; of course, this could result in a tax liability.

---

## Year-End Investment Checklist



---

Remember that asset allocation and diversification do not guarantee a profit or protect against loss; they are methods to help manage investment risk. All investing involves risk, including the possible loss of principal, and there is no guarantee that any investment strategy will be successful.

## 4. Use Losses to Help Offset Gains

If you have taxable investments that have lost money and that you want to sell for strategic reasons, consider selling shares before the end of the year to recognize a tax loss on your return. Tax losses, in turn, could be used to offset any tax gains. If you have a net loss after offsetting any tax gains, you can deduct up to \$3,000 of losses (\$1,500 if married filing separately). If your loss exceeds the \$3,000/\$1,500 limit, it can be carried over to later tax years.

When attempting to realize a tax loss, remember the wash-sale rule, which applies when you sell a security at a loss and repurchase the same security within 30 days of the sale. When this happens, the loss is disallowed for tax purposes.

## 5. Set Goals for the New Year

After your year-end investment review, you might resolve to increase contributions to an IRA, an employer-sponsored retirement plan, or a college fund in 2021. With a fresh perspective on where you stand, you may be able to make choices next year that could potentially benefit your investment portfolio over the long term.

# Medicare Open Enrollment: It's Time to Review Your Coverage

During the Medicare Open Enrollment Period that runs from October 15 through December 7, you can make changes to your Medicare coverage that will be effective on January 1, 2021. If you're satisfied with your current coverage, you don't need to make changes, but it's a good idea to review your options.

During Open Enrollment, you can:

- Change from Original Medicare (Part A hospital insurance and Part B medical insurance) to a Medicare Advantage plan (Part C), or vice versa
- Switch from one Medicare Advantage plan to another Medicare Advantage plan
- Join a Medicare Prescription Drug Plan (Part D), switch from one Medicare Prescription Drug plan to another, or drop prescription drug coverage

Medicare Advantage plans are offered by private companies approved by Medicare. They cover all Original Medicare services, and often include Part D coverage and extra benefits.

Review any information you receive from your current Medicare plan. For example, in the fall, your plan will send you an Annual Notice of Change that lists changes to your plan's coverage, costs, or service area that will take effect in January. You will also receive a comprehensive Evidence of Coverage document that includes detailed information on the plan's benefits, how the plan works, and your rights and responsibilities.

The official government handbook, *Medicare & You*, which is available electronically or through the mail, also contains information about Medicare that may help you determine whether your current coverage is appropriate.

As you review your coverage, here are a few points to consider:

- What were your health-care costs during the past year, and what did you spend the most on?
- What services do you need and which health-care providers and pharmacies do you visit?
- How does the cost of your current coverage compare to other options? Consider premiums, deductibles, and other out-of-pocket costs such as copayments or coinsurance; are any of these costs changing?

If you're interested in a Medicare Advantage plan or a Medicare Prescription Drug plan, you can use the Medicare Plan Finder at [medicare.gov](https://www.medicare.gov) to see which plans are available in your area and check their overall quality rating. To get personalized information, you can log in or create an account (if you have a Medicare Number) to compare your plan to others, and see prescription drug costs.

If you have questions about Medicare, call 1-800-MEDICARE or visit the Medicare website. Your State Health Insurance Assistance Program can also help you sort through your options.

---

The accompanying pages have been developed by an independent third party. Commonwealth Financial Network is not responsible for their content and does not guarantee their accuracy or completeness, and they should not be relied upon as such. These materials are general in nature and do not address your specific situation. For your specific investment needs, please discuss your individual circumstances with your representative. Commonwealth does not provide tax or legal advice, and nothing in the accompanying pages should be construed as specific tax or legal advice. Securities and advisory services offered through Commonwealth Financial Network, Member FINRA/SIPC, a Registered Investment Advisor.

*This informational e-mail is an advertisement. To opt out of receiving future messages, follow the Unsubscribe instructions below*