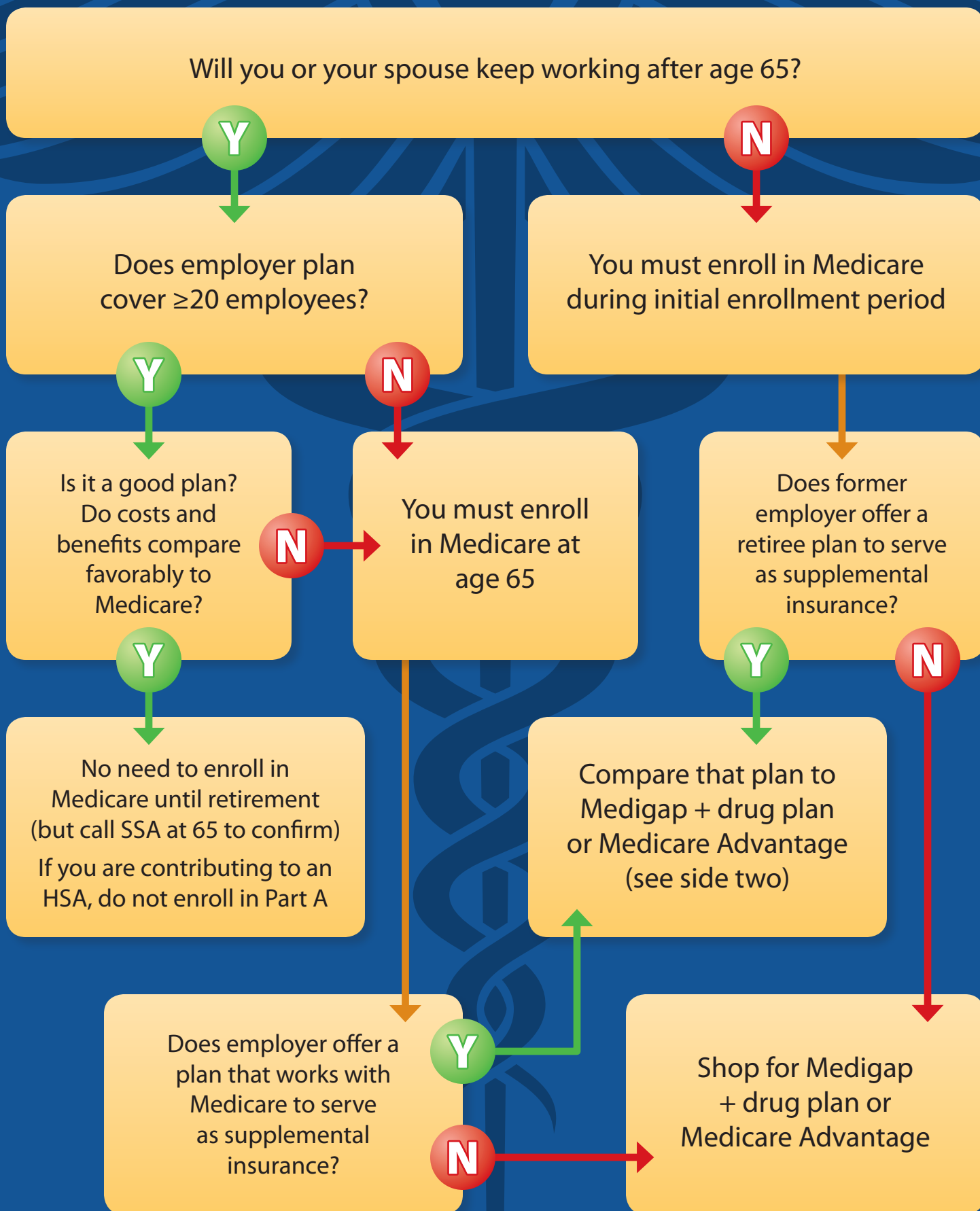


Medicare Enrollment Planning



Steps to take when comparing Medicare to 20+ employer insurance

STEP 1: Talk to your employer to see if your current insurance will change at age 65.

STEP 2: Gather all documents pertaining to your employer-sponsored insurance.

STEP 3: Find a comparable Medicare plan—either traditional Medicare A, B, D plus Medigap, or a Medicare Advantage plan.

STEP 4: Figure out which plan is a better value by comparing prices and benefits.

STEP 5: Consider other factors, such as spousal insurance, whether you'd have to change your doctors, etc.

STEP 6: Get a second opinion from a trusted insurance agent or consultant.

Considerations

- Can you see the doctor you want? Are the right specialists available if you need them?
- How much will you have to pay for your medications?
- What are the monthly premiums?
- What other out-of-pocket costs might you incur based on your expected health care usage?
- Are family benefits important? If the decision to go off the employer plan would affect your spouse's insurance, add the cost of spouse's coverage to your analysis.

To enroll in Medicare, visit ssa.gov/benefits/medicare or call (800) 772-1213

Joseph G. Budd, CFP®, ChFC, MSFS
Budd Wealth Management

725 Cool Springs Blvd.
Suite 600
Franklin, TN 37067

6155673056

www.BuddWealth.com



Securities are offered through LPL Financial, Member FINRA/SIPC. Budd Wealth Management is another business name of Independent Advisor Alliance. All investment advice is offered through Independent Advisor Alliance, LLC, a registered investment adviser. Independent Advisor Alliance, LLC and Budd Wealth Management are separate entities from LPL Financial. This information is not intended to be a substitute for specific individualized tax or legal advice. We suggest that you discuss your specific situation with a qualified tax or legal advisor.