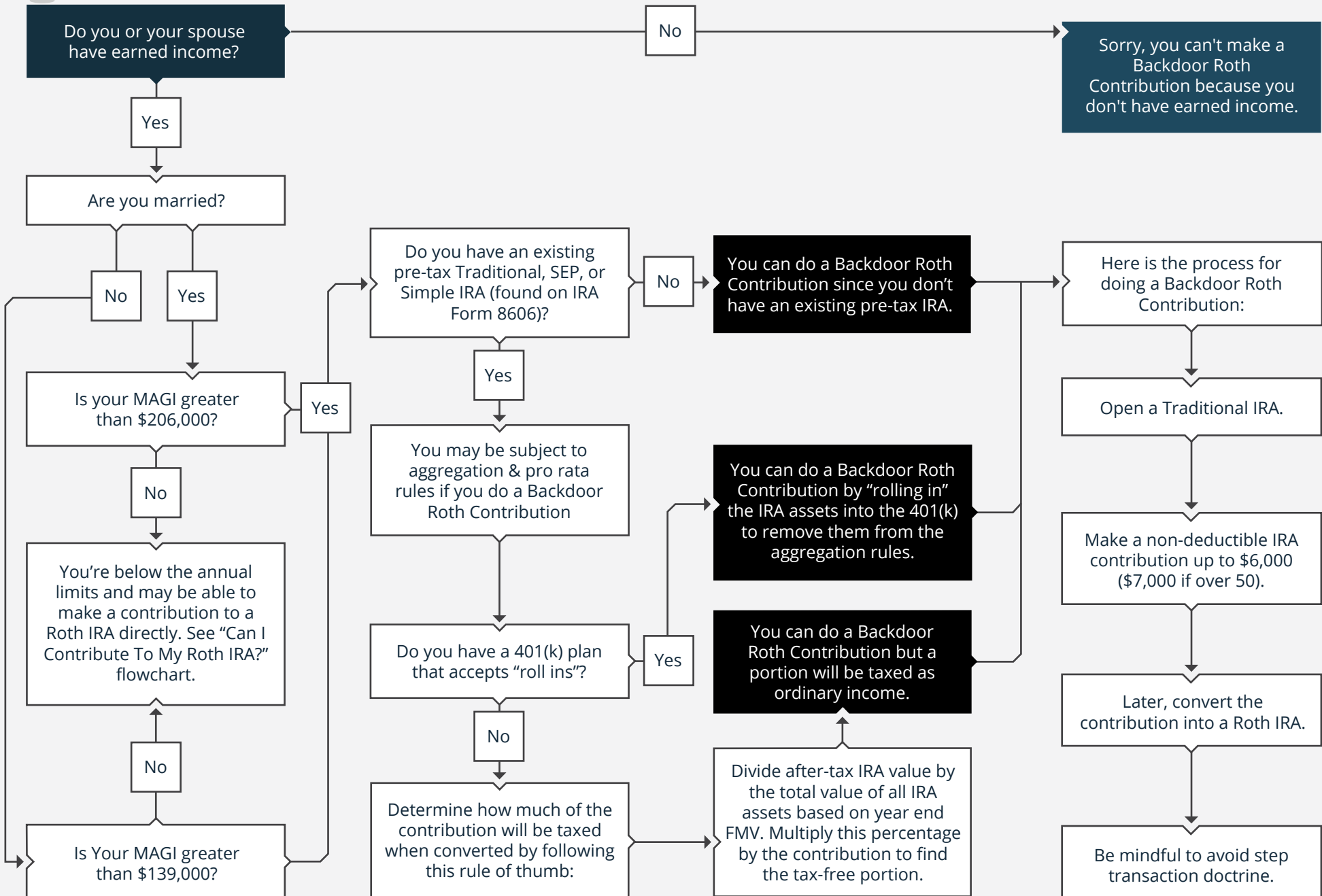


2020 · CAN I MAKE A BACKDOOR ROTH IRA CONTRIBUTION?

Start Here



Jason Coddington is a Registered Representative with, and securities and advisory services offered through LPL Financial, Member FINRA/SIPC.

This material is for general information only and is not intended to provide specific advice or recommendations for any individual. All performance referenced is historical and is no guarantee of future results.

Traditional IRA account owners have considerations to make before performing a Roth IRA conversion. These primarily include income tax consequences on the converted amount in the year of conversion, withdrawal limitations from a Roth IRA, and income limitations for future contributions to a Roth IRA. In addition, if you are required to take a required minimum distribution (RMD) in the year you convert, you must do so before converting to a Roth IRA.

This information is not intended to be a substitute for specific individualized tax advice. We suggest that you discuss your specific tax issues with a qualified tax advisor.

Jason Coddington, Coddington Wealth Advisors

1440 Draper St. Suite B Kingsburg, CA 93631

jason@coddingtonwealthadvisors.com | 5598970040 | coddingtonwealthadvisors.com