



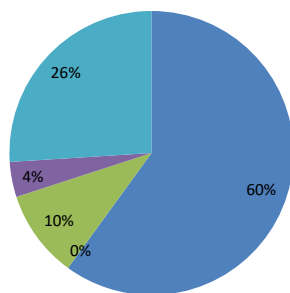
SRCM GROWTH ETF PORTFOLIO

Report Date : 11/30/2019

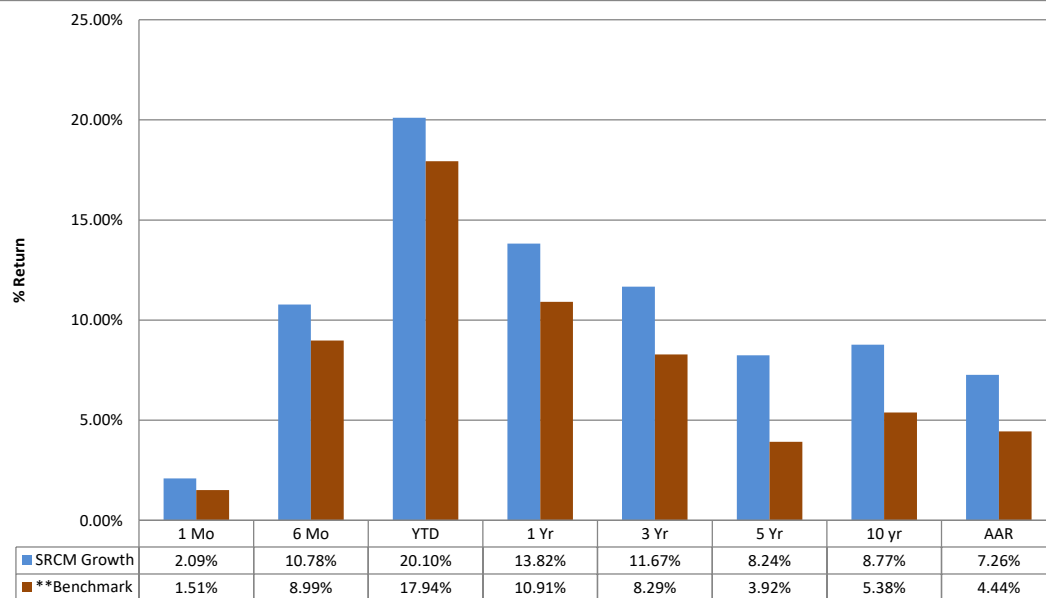
Inception Date : 1/1/2004

Asset Allocation

■ US Equities ■ Intl Equities ■ Real Estate ■ Commodities ■ Fixed Income/Cash



Annualized Returns



Portfolio Objective

The Growth ETF Portfolio seeks long term capital appreciation through a globally diversified portfolio made up of US and International Equities, Real Estate, Commodities, and Fixed Income. The Growth ETF Portfolio uses a dynamic asset allocation strategy that is actively managed to take advantage of current market conditions while minimizing downside risk. The Portfolio remains 100% invested and is rebalanced periodically as needed.

Investment Process

SRCM has developed a proprietary two step research process that is used to generate the asset allocation and security selection that makes up each portfolio. Step one uses relative strength analysis to weight each asset class; step two uses fundamental and technical analysis to create a unique SRCM score that is used to select the individual ETF's included in the

3 Yr Statistical Data

	Std Dev	Sharpe	Alpha	Beta	R2
Growth Portfolio	9.61%	1.04	2.58%	0.80	89.48%
MSCI ACWI	11.36%	0.71	2.86%	1.00	100.00%

Portfolio Expense Ratio

0.11%

Disclosure Statement

Past performance is not an indication of future performance. The returns stated are gross of fees and commissions. Portfolio performance takes into account the payment of dividends and distributions (assumed to be paid on the ex - dividend date and reinvested). ETF's are presumed to be added to or deleted from the Model Portfolio's at the close of the market the same day a change in the model is made, therefore the actual performance of client portfolio's may differ over the comparable time periods.

****Benchmark** = 70% MSCI ACWI + 7.5% DJ US Real Estate Index + 7.5% S&P GSCI Index + 15% Barclays Agg Bond Index