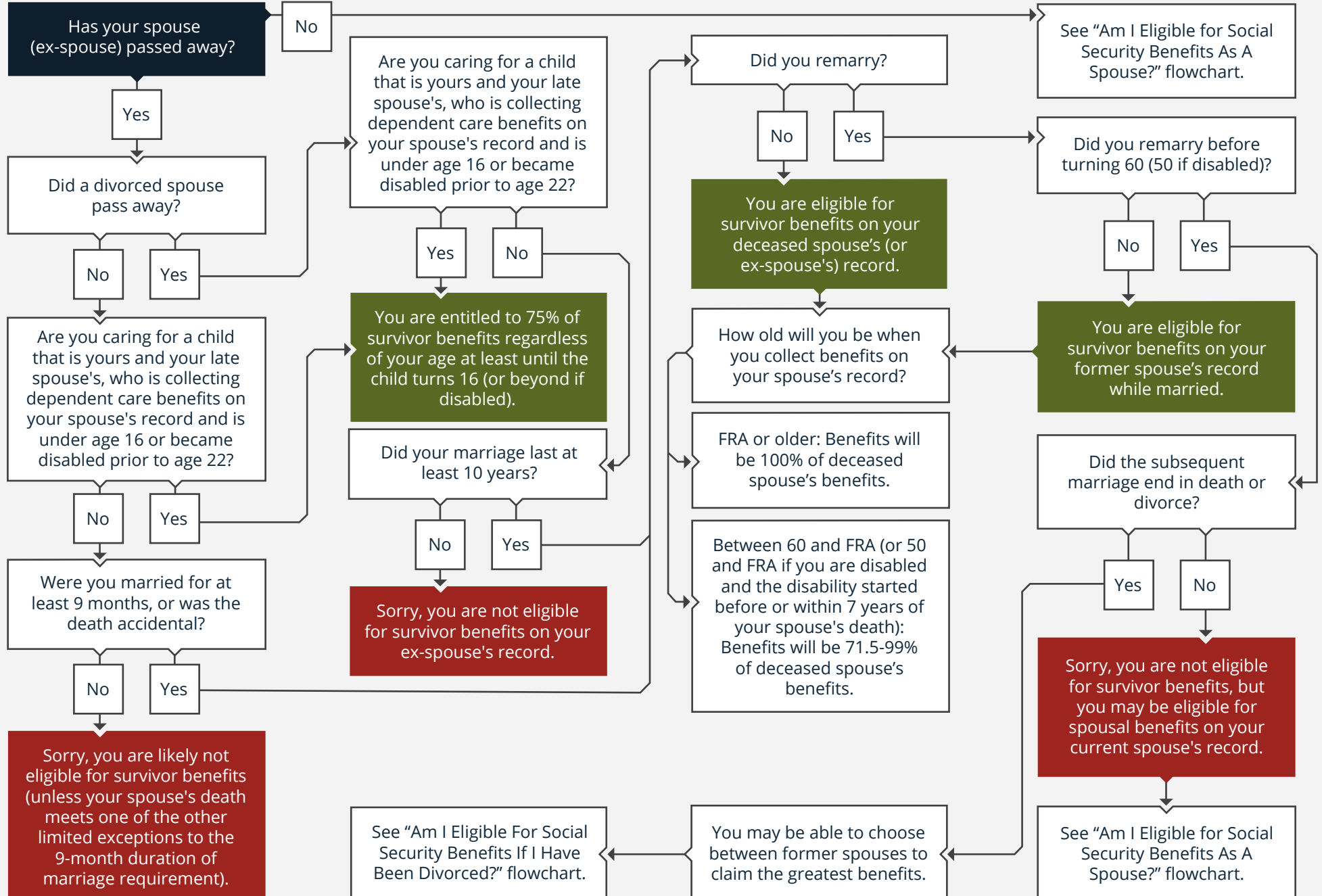


2023 · AM I ELIGIBLE FOR SOCIAL SECURITY BENEFITS AS A SURVIVING SPOUSE?

Start Here



Disclosures:

The information is illustrative only and provided is for educational and informational purposes only and does not constitute investment advice and it should not be relied on as such. It should not be considered a solicitation to buy or an offer to sell a security. It does not take into account any investor's particular investment objectives, strategies, tax status or investment horizon. You should consult your attorney or tax advisor.

The views expressed in this commentary are subject to change based on market and other conditions. These documents may contain certain statements that may be deemed forward-looking statements. Please note that any such statements are not guarantees of any future performance and actual results or developments may differ materially from those projected. Any projections, market outlooks, or estimates are based upon certain assumptions and should not be construed as indicative of actual events that will occur.

All information has been obtained from sources believed to be reliable, but its accuracy is not guaranteed. There is no representation or warranty as to the current accuracy, reliability or completeness of, nor liability for, decisions based on such information and it should not be relied on as such.

Melone Private Wealth, LLC ("Melone Private Wealth") is a registered investment advisor. Advisory services are only offered to clients or prospective clients where Melone Private Wealth and its representatives are properly licensed or exempt from licensure.

For current Melone Private Wealth information, please visit the Investment Adviser Public Disclosure website at www.adviserinfo.sec.gov by searching with Melone Private Wealth's CRD# 311638 or go to our website at www.meloneprivatewealth.com

Louis Melone, CFP®

3121 University Drive Suite 180 Auburn Hills, MI 48326
lmelone@melonewealth.com | 248-499-8704 | www.meloneprivatewealth.com