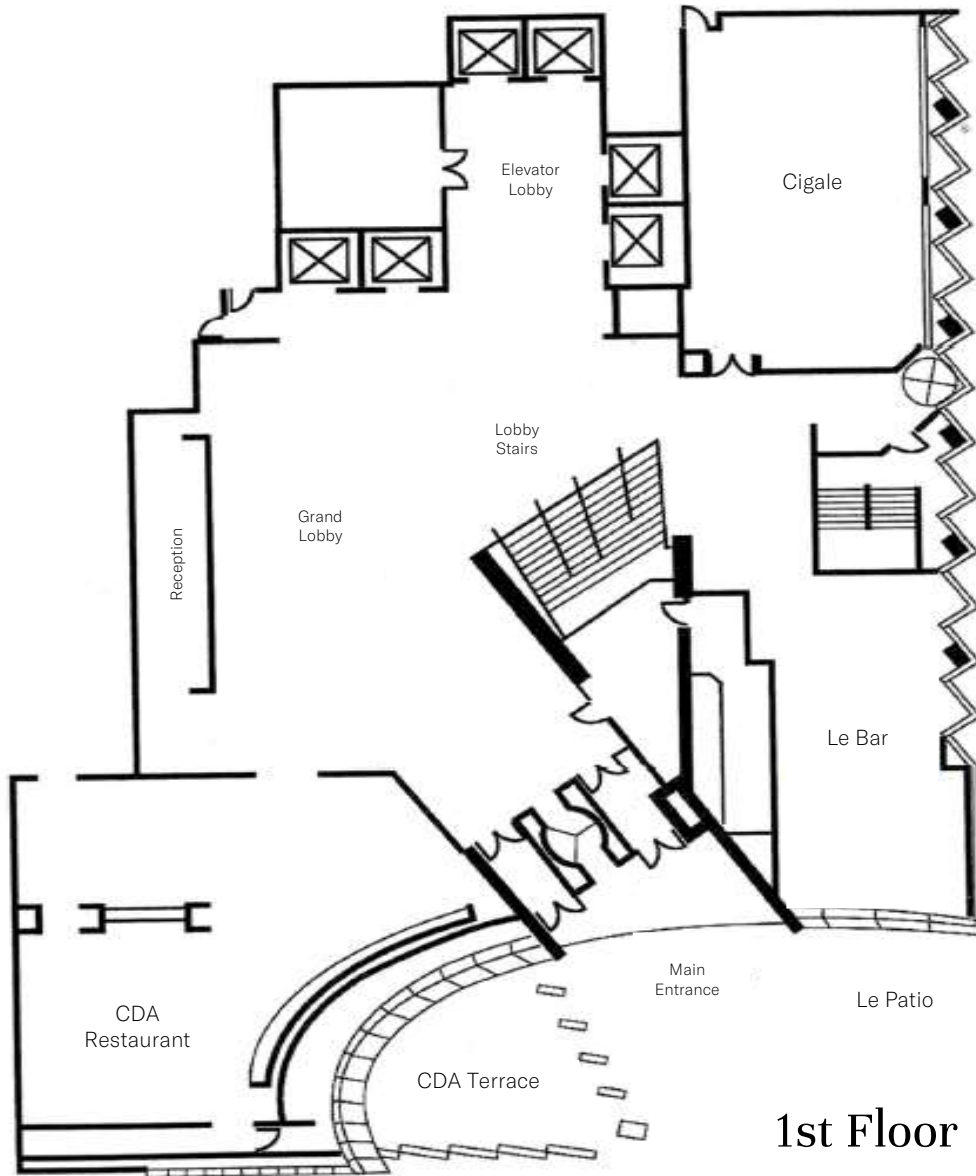


Space – Ground Floor

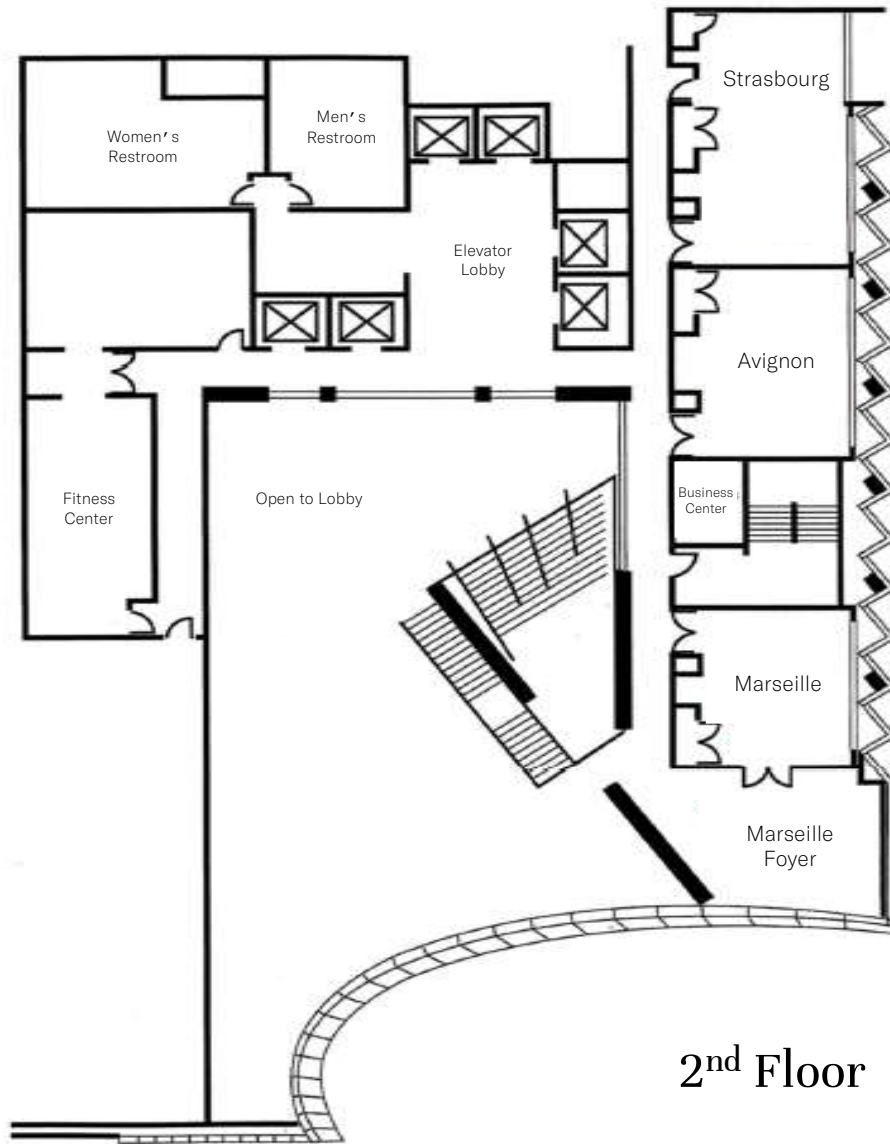


1st Floor

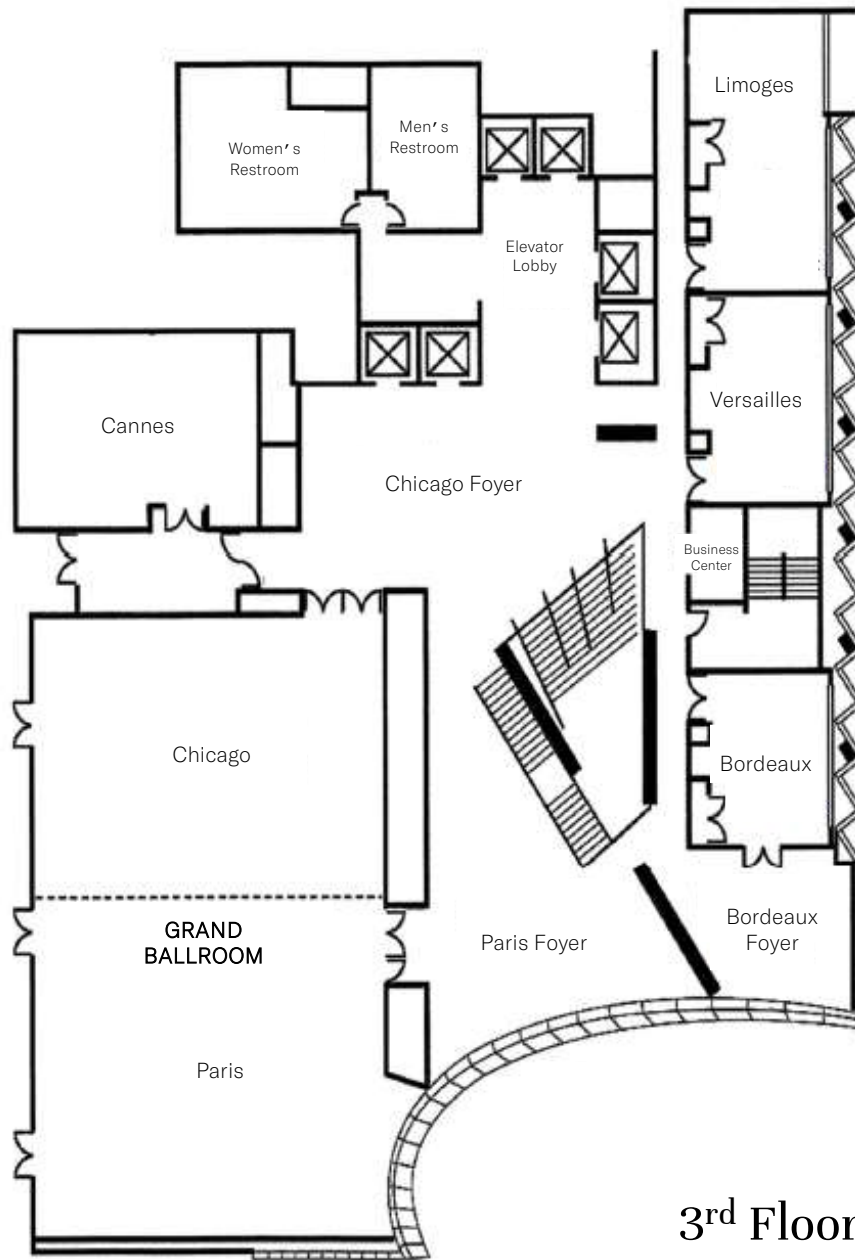
SOFITEL
CHICAGO MAGNIFICENT MILE



Space – Second Floor



Space – Third Floor



3rd Floor



Capacity Chart



	Dimensions	Sq. Ft.	Rds of 10	Reception	Theater	Classroom	Conference	U-Shape	H-Square
First Floor									
Cigale	26' x 42' x 12'	1,165	80	85	60	45	27	33	36
CDA	-	1,930	65	100	-	-	-	-	-
CDA Terrace	-	960	-	60	-	-	-	-	-
Le Bar	-	1,075	60	-	-	-	-	-	-
Le Bar Terrace	-	896	-	60	-	-	-	-	-
Full Terrace	-	2,160	-	200	-	-	-	-	-
Second Floor									
Strasbourg	36' x 18' x 9'	634	60	70	62	48	30	30	36
Avignon	19' x 27' x 9'	500	50	60	50	32	21	24	24
Marseille	19' x 22' x 9'	406	40	50	40	24	18	18	24
Marseille Foyer	20' x 20' x 9'	400	30	50	-	-	-	-	-
Third Floor									
Grand Ballroom	82' x 56' x 12'	4,505	380	400	400	264	66	84	102
Paris	45' x 56' x 12'	2,465	190	225	231	147	45	51	66
Chicago	37' x 56' x 12'	2,040	140	200	189	105	45	48	60
Grand Ballroom Foyer		2,820	100	200	-	-	-	-	-
Cannes	23' x 37' x 9'	837	80	80	70	54	30	30	36
Limoges	36' x 18' x 9'	634	60	70	62	48	30	30	36
Versailles	19' x 27' x 9'	500	50	60	50	32	21	24	24
Bordeaux	19' x 22' x 9'	406	40	50	40	24	18	18	24
Bordeaux Foyer	20' x 20' x 9'	400	30	50	-	-	-	-	-

