

## Pantheon Report

Generated at 2018-07-24 13:50:31 (UTC).

Data path: AWS India 1 Ethernet (*local*) → India ppp0 ppp0 (*remote*).

Repeated the test of 17 congestion control schemes 3 times.

Each test lasted for 30 seconds running 3 flows with 10-second interval between two flows.

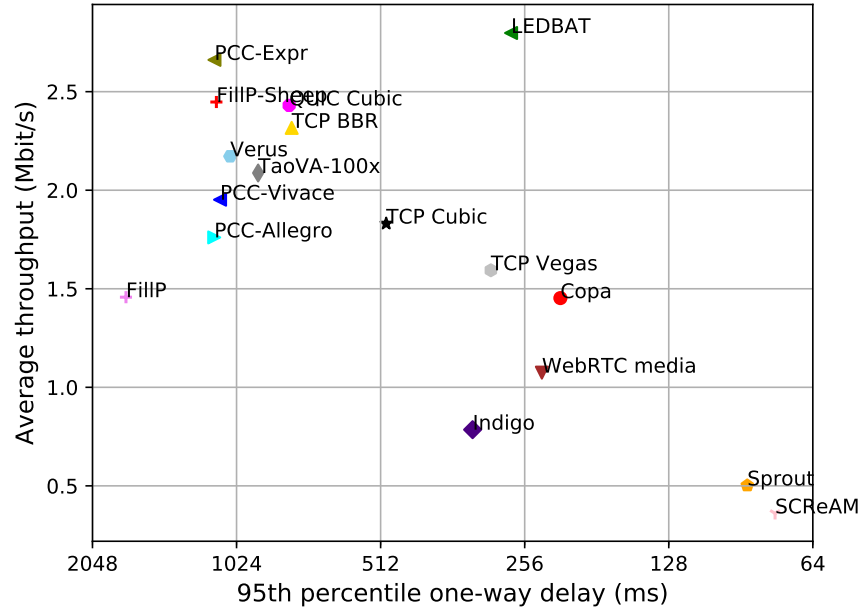
Increased UDP receive buffer to 16 MB (default) and 32 MB (max).

NTP offsets were measured against `nets.org.sg` and have been applied to correct the timestamps in logs.

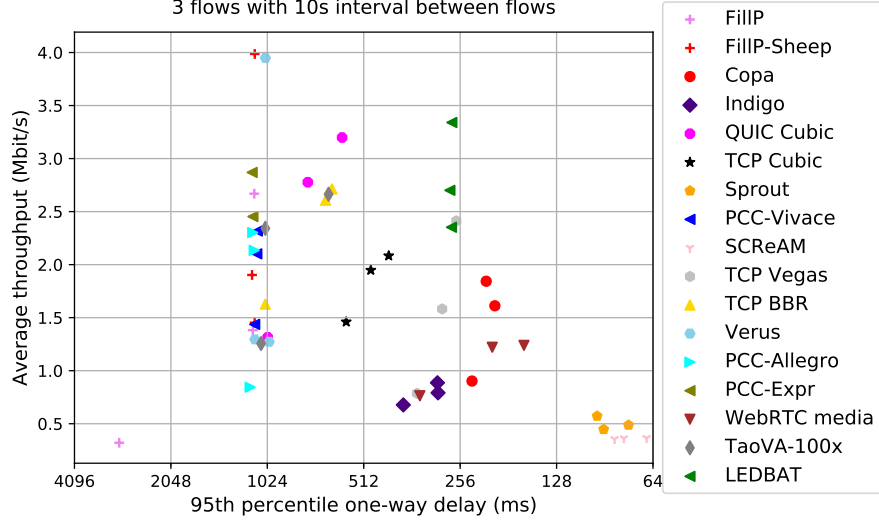
Git summary:

```
branch: master @ 640164b5b17c7c6561fff57729b3b5935d8596ce
third_party/fillp @ d47f4fa1b454a5e3c0537115c5a28436dbd4b834
third_party/fillp-sheep @ daed0c84f98531712514b2231f43ec6901114ffe
third_party/genericCC @ d0153f8e594aa89e93b032143cedbdf58e562f4
third_party/indigo @ 2601c92e4aa9d58d38dc4dfe0ecdbf90c077e64d
third_party/libutp @ b3465b942e2826f2b179eaab4a906ce6bb7cf3cf
third_party/pantheon-tunnel @ 6f038ed31259d366f9840f65b82cbe8f464b1b39
third_party/pcc @ 1afc958fa0d66d18b623c091a55fec872b4981e1
M receiver/src/buffer.h
M receiver/src/core.cpp
M sender/src/buffer.h
M sender/src/core.cpp
third_party/pcc-experimental @ cd43e34e3f5f5613e8acd08fab92c4eb24f974ab
third_party/proto-quirk @ 77961f1a82733a86b42f1bc8143ebc978f3cff42
third_party/scream-reproduce @ f099118d1421aa3131bf11ff1964974e1da3bdb2
M src/ScreamClient
M src/ScreamServer
third_party/sprout @ 366e35c6178b01e31d4a46ad18c74f9415f19a26
third_party/verus @ d4b447ea74c6c60a261149af2629562939f9a494
M src/verus.hpp
M tools/plot.py
third_party/vivace @ 2baf86211435ae071a32f96b7d8c504587f5d7f4
third_party/webRTC @ 3f0cc2a9061a41b6f9dde4735770d143a1fa2851
```

test from AWS India 1 to India ppp0, 3 runs of 30s each per scheme  
 3 flows with 10s interval between flows (mean of all runs by scheme)



test from AWS India 1 to India ppp0, 3 runs of 30s each per scheme  
 3 flows with 10s interval between flows



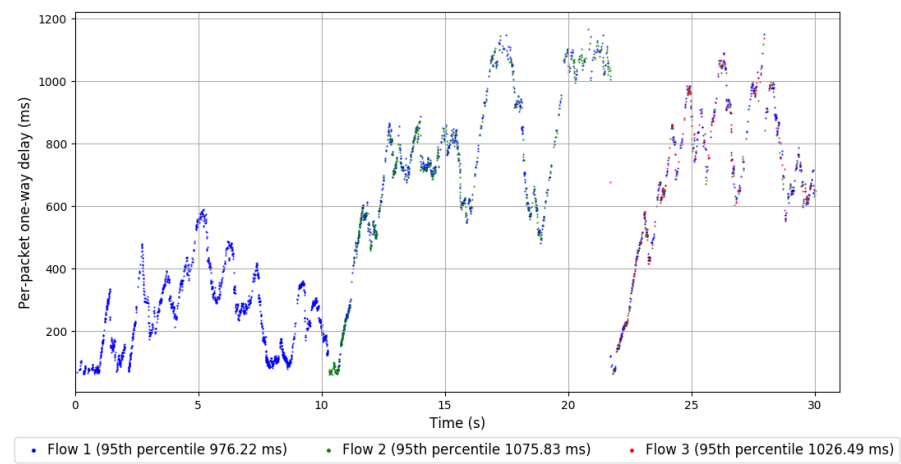
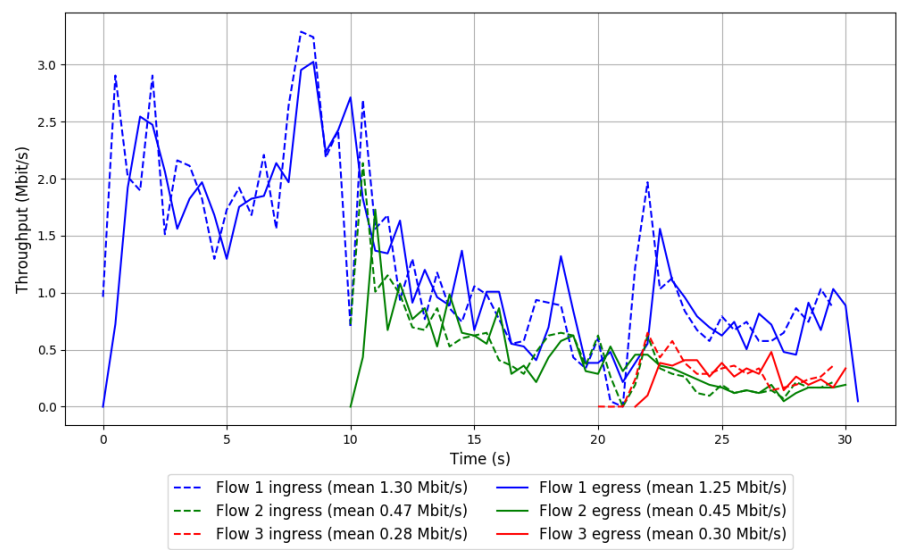
scheme	# runs	mean avg tput (Mbit/s)			mean 95th-%ile delay (ms)			mean loss rate (%)		
		flow 1	flow 2	flow 3	flow 1	flow 2	flow 3	flow 1	flow 2	flow 3
TCP BBR	3	1.58	0.67	0.92	772.24	814.83	688.70	2.28	3.67	5.60
Copa	3	0.77	0.72	0.62	211.95	221.17	204.16	0.13	0.69	0.19
TCP Cubic	3	1.04	0.84	0.72	453.33	514.87	596.90	1.22	1.72	3.30
FillP	3	0.88	0.80	0.23	1762.68	1586.40	1718.34	70.08	69.12	78.19
FillP-Sheep	3	1.50	1.20	0.62	1105.90	1132.34	1142.53	42.70	64.86	83.69
Indigo	3	0.38	0.38	0.48	315.49	385.14	366.96	0.54	0.68	1.42
LEDBAT	3	1.82	1.20	0.60	264.74	279.80	311.64	0.23	0.90	1.46
PCC-Allegro	3	1.11	0.67	0.74	1119.80	1114.49	1257.91	50.08	59.76	98.93
PCC-Expr	2	2.01	0.79	0.54	1134.17	1139.79	1148.41	63.39	74.18	62.56
QUIC Cubic	3	1.45	1.05	0.92	746.86	808.09	900.67	1.79	3.23	8.98
SCReAM	3	0.19	0.16	0.20	73.59	79.80	87.40	0.03	0.22	0.33
Sprout	3	0.23	0.26	0.29	85.75	89.29	92.34	0.17	0.41	0.43
TaoVA-100x	3	1.32	0.81	0.71	795.21	933.80	975.32	5.80	16.38	20.41
TCP Vegas	3	0.71	0.77	1.13	309.73	277.08	378.14	0.69	0.62	1.20
Verus	3	1.50	0.86	0.35	994.39	947.00	1025.51	26.80	7.86	7.67
PCC-Vivace	3	1.17	0.94	0.57	1101.95	1114.13	1121.26	22.51	34.97	49.56
WebRTC media	3	0.58	0.27	0.23	264.42	307.63	135.54	0.23	0.28	0.64

Run 1: Statistics of TCP BBR

Start at: 2018-07-24 13:08:00  
End at: 2018-07-24 13:08:30  
Local clock offset: 3.096 ms  
Remote clock offset: -2.835 ms

# Below is generated by plot.py at 2018-07-24 13:49:49  
# Datalink statistics  
-- Total of 3 flows:  
Average throughput: 1.63 Mbit/s  
95th percentile per-packet one-way delay: 1038.904 ms  
Loss rate: 4.65%  
-- Flow 1:  
Average throughput: 1.25 Mbit/s  
95th percentile per-packet one-way delay: 976.221 ms  
Loss rate: 3.91%  
-- Flow 2:  
Average throughput: 0.45 Mbit/s  
95th percentile per-packet one-way delay: 1075.834 ms  
Loss rate: 6.26%  
-- Flow 3:  
Average throughput: 0.30 Mbit/s  
95th percentile per-packet one-way delay: 1026.487 ms  
Loss rate: 9.54%

Run 1: Report of TCP BBR — Data Link



Run 2: Statistics of TCP BBR

Start at: 2018-07-24 13:26:49

End at: 2018-07-24 13:27:19

Local clock offset: 3.077 ms

Remote clock offset: 1.885 ms

# Below is generated by plot.py at 2018-07-24 13:49:51

# Datalink statistics

-- Total of 3 flows:

Average throughput: 2.71 Mbit/s

95th percentile per-packet one-way delay: 643.402 ms

Loss rate: 1.96%

-- Flow 1:

Average throughput: 1.64 Mbit/s

95th percentile per-packet one-way delay: 647.339 ms

Loss rate: 1.42%

-- Flow 2:

Average throughput: 1.08 Mbit/s

95th percentile per-packet one-way delay: 681.676 ms

Loss rate: 2.40%

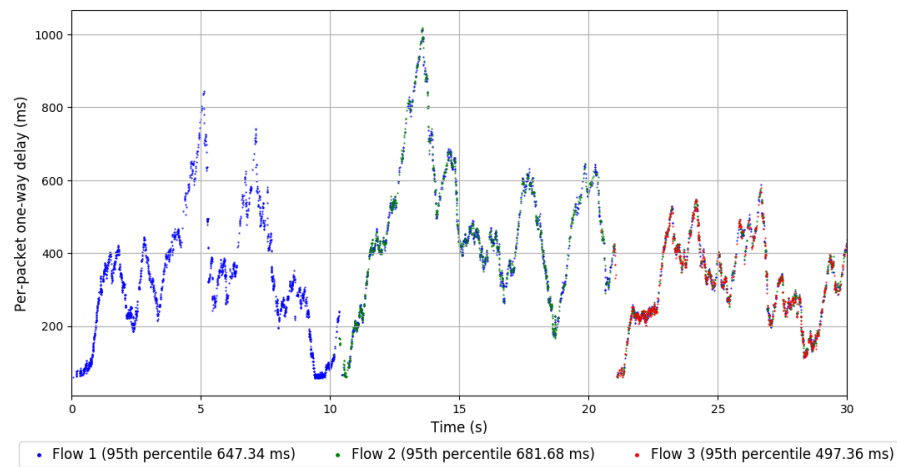
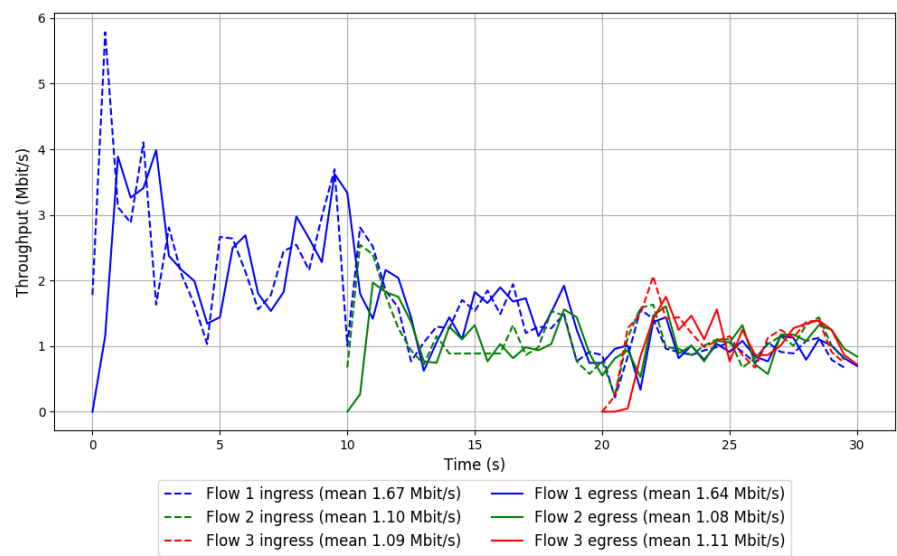
-- Flow 3:

Average throughput: 1.11 Mbit/s

95th percentile per-packet one-way delay: 497.361 ms

Loss rate: 3.52%

Run 2: Report of TCP BBR — Data Link



Run 3: Statistics of TCP BBR

Start at: 2018-07-24 13:45:50

End at: 2018-07-24 13:46:20

Local clock offset: 0.185 ms

Remote clock offset: 6.334 ms

# Below is generated by plot.py at 2018-07-24 13:49:51

# Datalink statistics

-- Total of 3 flows:

Average throughput: 2.61 Mbit/s

95th percentile per-packet one-way delay: 673.663 ms

Loss rate: 1.99%

-- Flow 1:

Average throughput: 1.86 Mbit/s

95th percentile per-packet one-way delay: 693.171 ms

Loss rate: 1.51%

-- Flow 2:

Average throughput: 0.49 Mbit/s

95th percentile per-packet one-way delay: 686.983 ms

Loss rate: 2.36%

-- Flow 3:

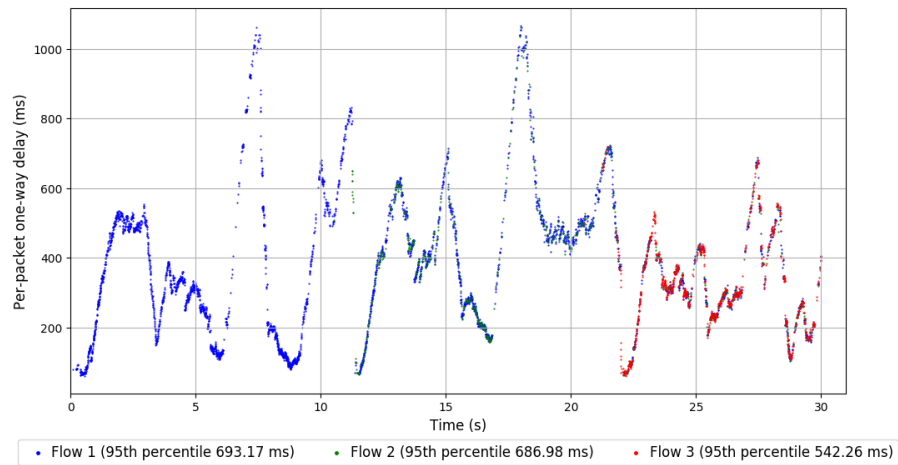
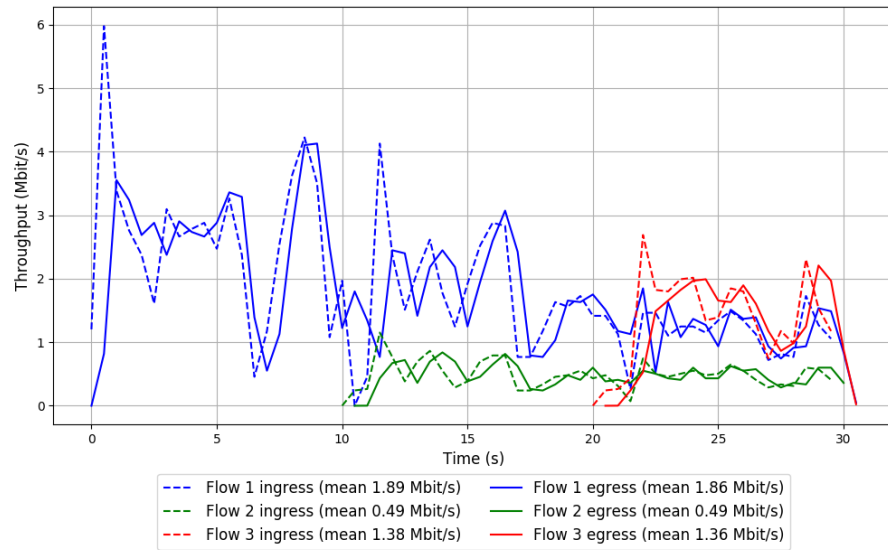
Average throughput: 1.36 Mbit/s

95th percentile per-packet one-way delay: 542.261 ms

Loss rate: 3.75%



### Run 3: Report of TCP BBR — Data Link

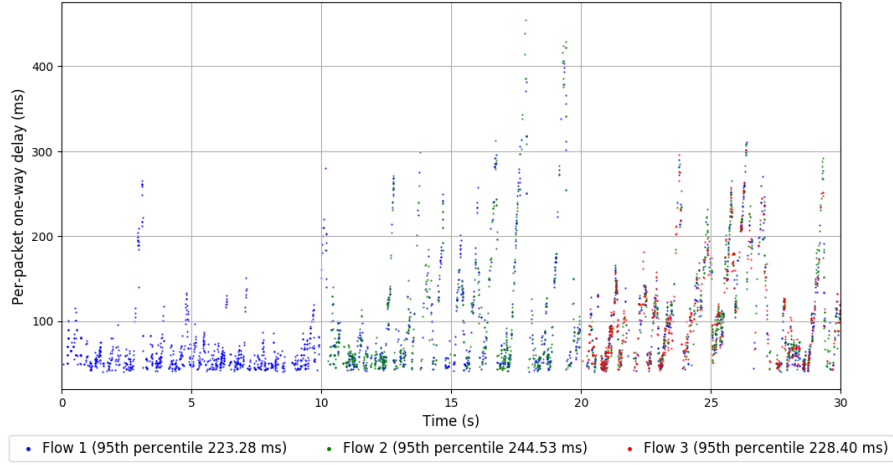
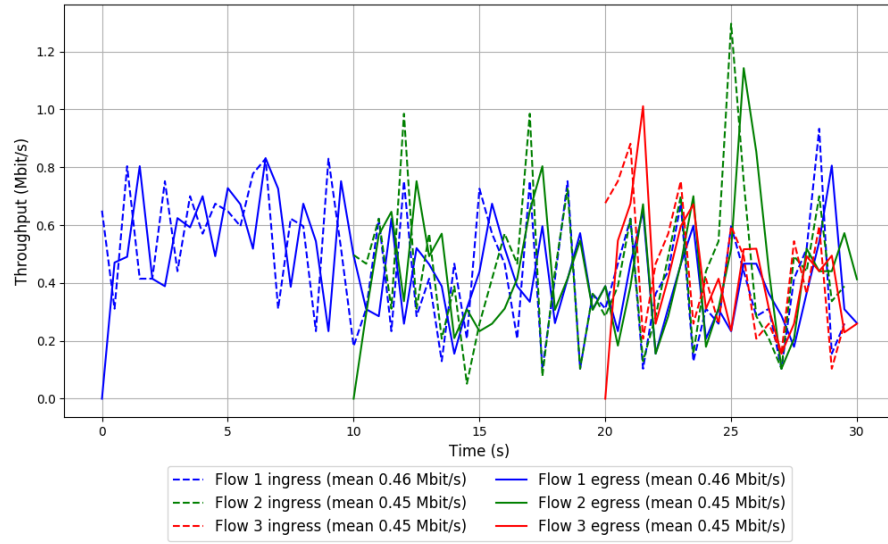


Run 1: Statistics of Copa

Start at: 2018-07-24 13:04:41  
End at: 2018-07-24 13:05:11  
Local clock offset: 1.135 ms  
Remote clock offset: -22.77 ms

# Below is generated by plot.py at 2018-07-24 13:49:51  
# Datalink statistics  
-- Total of 3 flows:  
Average throughput: 0.90 Mbit/s  
95th percentile per-packet one-way delay: 235.083 ms  
Loss rate: 0.15%  
-- Flow 1:  
Average throughput: 0.46 Mbit/s  
95th percentile per-packet one-way delay: 223.283 ms  
Loss rate: 0.09%  
-- Flow 2:  
Average throughput: 0.45 Mbit/s  
95th percentile per-packet one-way delay: 244.535 ms  
Loss rate: 0.31%  
-- Flow 3:  
Average throughput: 0.45 Mbit/s  
95th percentile per-packet one-way delay: 228.395 ms  
Loss rate: 0.02%

## Run 1: Report of Copa — Data Link



Run 2: Statistics of Copa

Start at: 2018-07-24 13:23:30

End at: 2018-07-24 13:24:00

Local clock offset: 2.839 ms

Remote clock offset: 2.771 ms

# Below is generated by plot.py at 2018-07-24 13:49:51

# Datalink statistics

-- Total of 3 flows:

Average throughput: 1.61 Mbit/s

95th percentile per-packet one-way delay: 199.473 ms

Loss rate: 0.19%

-- Flow 1:

Average throughput: 0.94 Mbit/s

95th percentile per-packet one-way delay: 198.022 ms

Loss rate: 0.05%

-- Flow 2:

Average throughput: 0.72 Mbit/s

95th percentile per-packet one-way delay: 202.359 ms

Loss rate: 0.44%

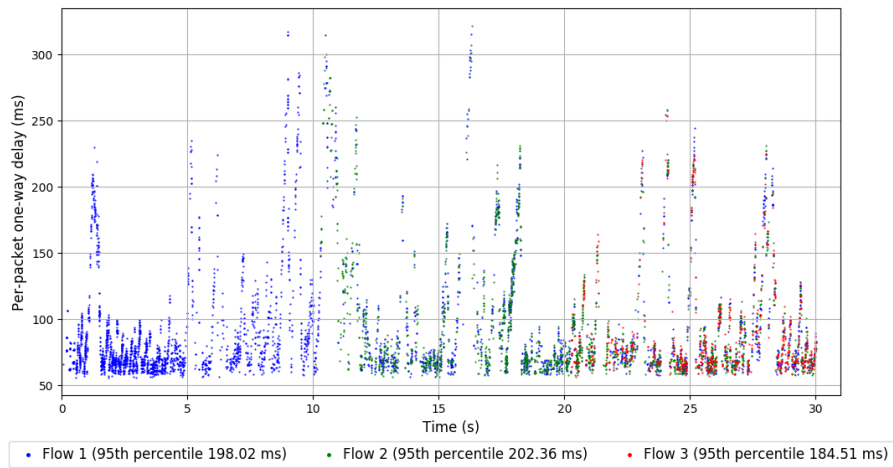
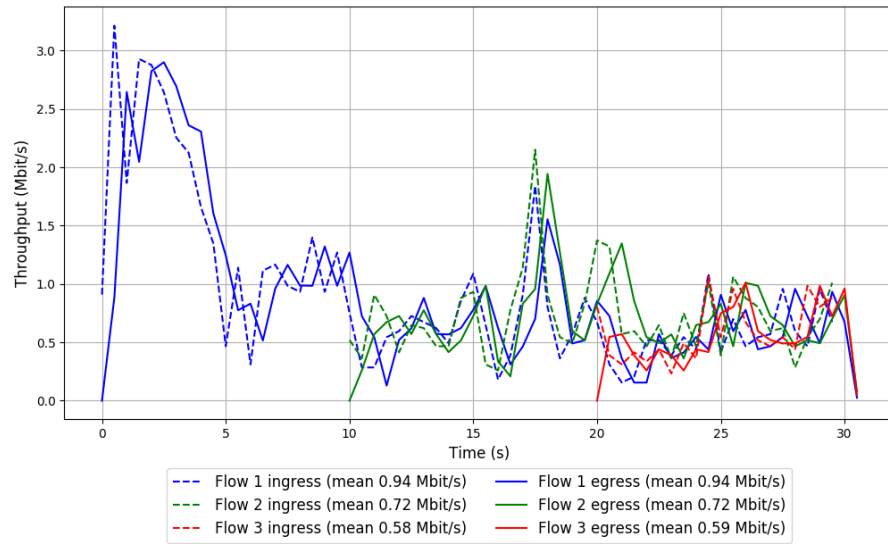
-- Flow 3:

Average throughput: 0.59 Mbit/s

95th percentile per-packet one-way delay: 184.507 ms

Loss rate: 0.22%

## Run 2: Report of Copa — Data Link



Run 3: Statistics of Copa

Start at: 2018-07-24 13:42:31

End at: 2018-07-24 13:43:01

Local clock offset: 0.948 ms

Remote clock offset: 4.669 ms

# Below is generated by plot.py at 2018-07-24 13:49:52

# Datalink statistics

-- Total of 3 flows:

Average throughput: 1.84 Mbit/s

95th percentile per-packet one-way delay: 212.281 ms

Loss rate: 0.64%

-- Flow 1:

Average throughput: 0.92 Mbit/s

95th percentile per-packet one-way delay: 214.547 ms

Loss rate: 0.24%

-- Flow 2:

Average throughput: 0.98 Mbit/s

95th percentile per-packet one-way delay: 216.607 ms

Loss rate: 1.31%

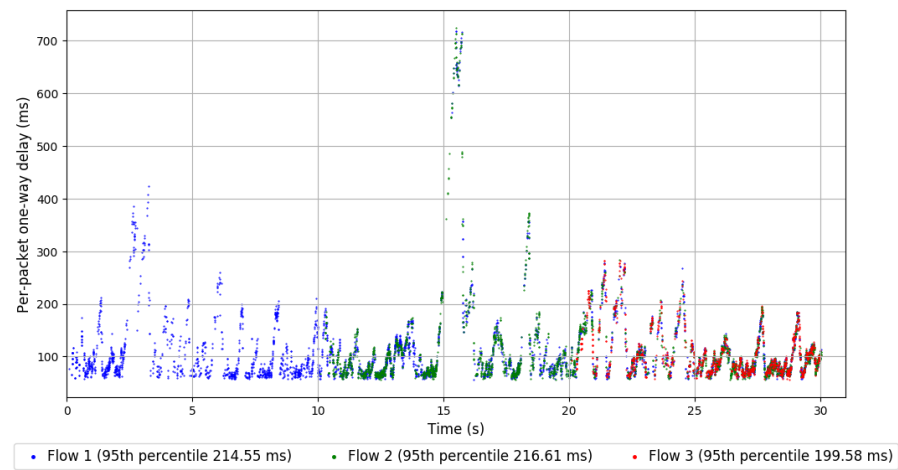
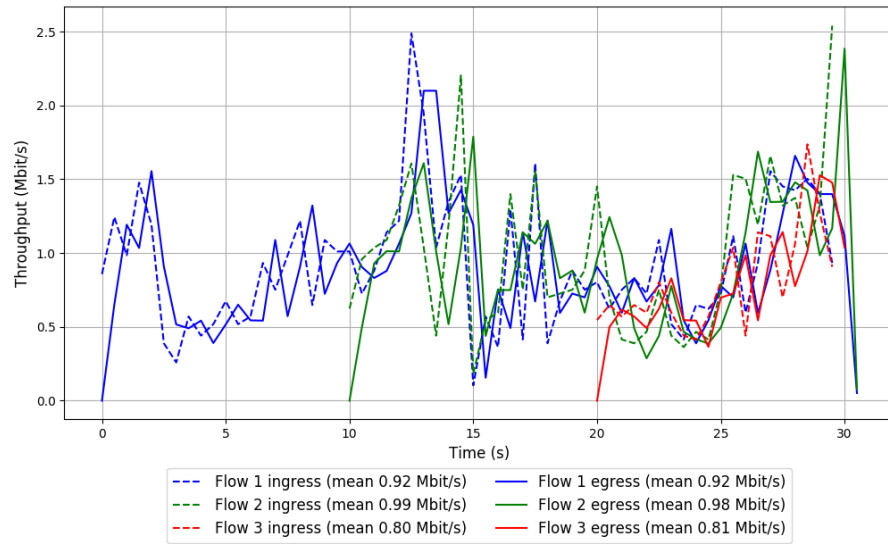
-- Flow 3:

Average throughput: 0.81 Mbit/s

95th percentile per-packet one-way delay: 199.576 ms

Loss rate: 0.32%

### Run 3: Report of Copa — Data Link



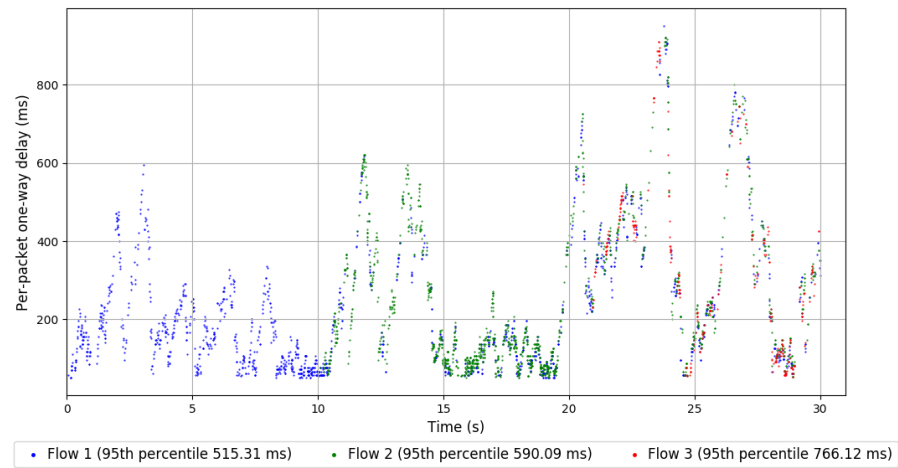
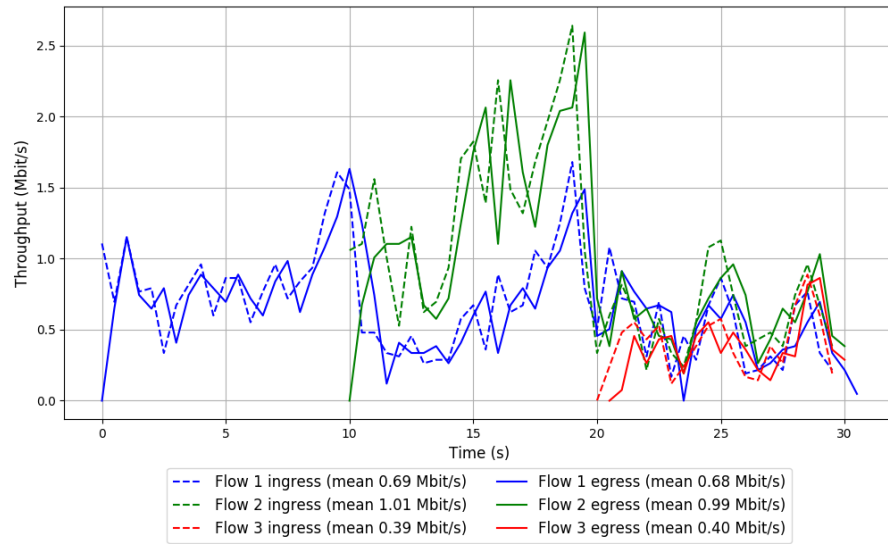
Run 1: Statistics of TCP Cubic

Start at: 2018-07-24 13:03:34  
End at: 2018-07-24 13:04:04  
Local clock offset: -1.095 ms  
Remote clock offset: -19.193 ms

# Below is generated by plot.py at 2018-07-24 13:49:52  
# Datalink statistics  
-- Total of 3 flows:  
Average throughput: 1.46 Mbit/s  
95th percentile per-packet one-way delay: 580.759 ms  
Loss rate: 1.67%  
-- Flow 1:  
Average throughput: 0.68 Mbit/s  
95th percentile per-packet one-way delay: 515.306 ms  
Loss rate: 1.46%  
-- Flow 2:  
Average throughput: 0.99 Mbit/s  
95th percentile per-packet one-way delay: 590.091 ms  
Loss rate: 1.38%  
-- Flow 3:  
Average throughput: 0.40 Mbit/s  
95th percentile per-packet one-way delay: 766.121 ms  
Loss rate: 4.35%



## Run 1: Report of TCP Cubic — Data Link



Run 2: Statistics of TCP Cubic

Start at: 2018-07-24 13:22:24

End at: 2018-07-24 13:22:54

Local clock offset: 1.039 ms

Remote clock offset: 5.626 ms

# Below is generated by plot.py at 2018-07-24 13:49:52

# Datalink statistics

-- Total of 3 flows:

Average throughput: 1.95 Mbit/s

95th percentile per-packet one-way delay: 486.689 ms

Loss rate: 1.60%

-- Flow 1:

Average throughput: 1.18 Mbit/s

95th percentile per-packet one-way delay: 426.691 ms

Loss rate: 1.01%

-- Flow 2:

Average throughput: 0.72 Mbit/s

95th percentile per-packet one-way delay: 511.724 ms

Loss rate: 2.13%

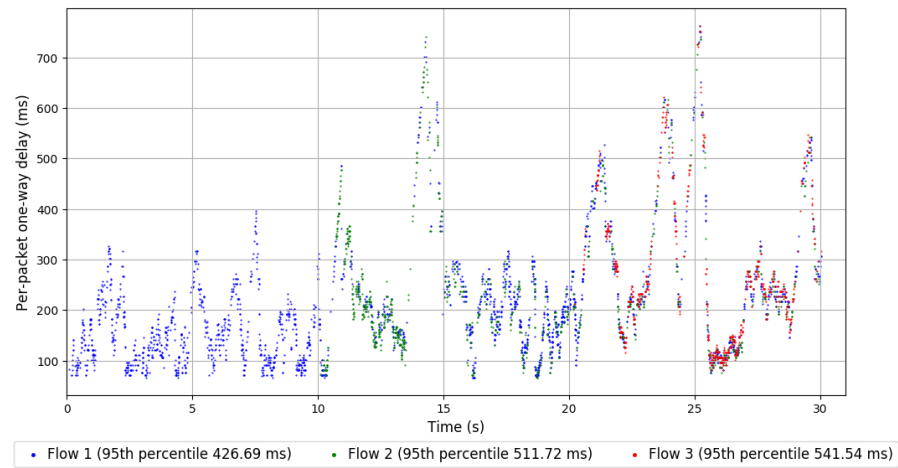
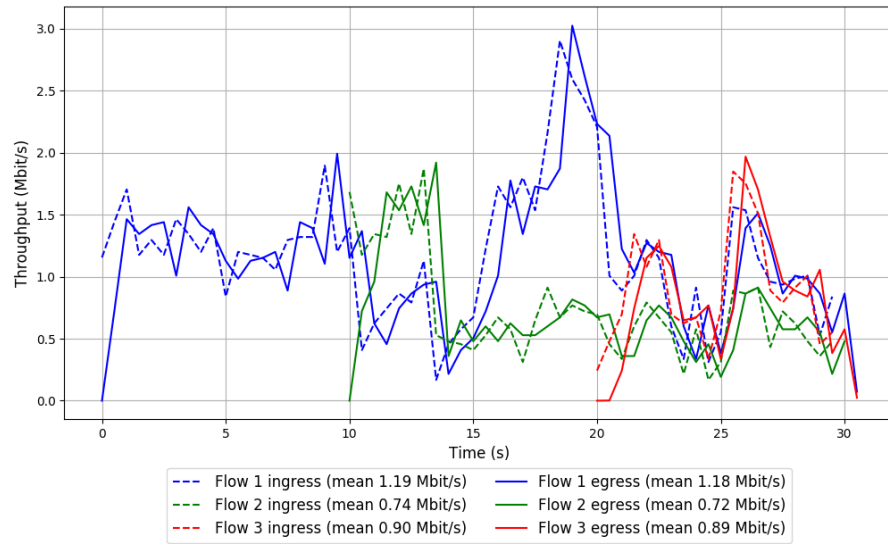
-- Flow 3:

Average throughput: 0.89 Mbit/s

95th percentile per-packet one-way delay: 541.537 ms

Loss rate: 3.08%

## Run 2: Report of TCP Cubic — Data Link



Run 3: Statistics of TCP Cubic

Start at: 2018-07-24 13:41:25

End at: 2018-07-24 13:41:55

Local clock offset: 2.883 ms

Remote clock offset: 0.247 ms

# Below is generated by plot.py at 2018-07-24 13:49:53

# Datalink statistics

-- Total of 3 flows:

Average throughput: 2.08 Mbit/s

95th percentile per-packet one-way delay: 427.876 ms

Loss rate: 1.48%

-- Flow 1:

Average throughput: 1.27 Mbit/s

95th percentile per-packet one-way delay: 417.999 ms

Loss rate: 1.18%

-- Flow 2:

Average throughput: 0.81 Mbit/s

95th percentile per-packet one-way delay: 442.788 ms

Loss rate: 1.64%

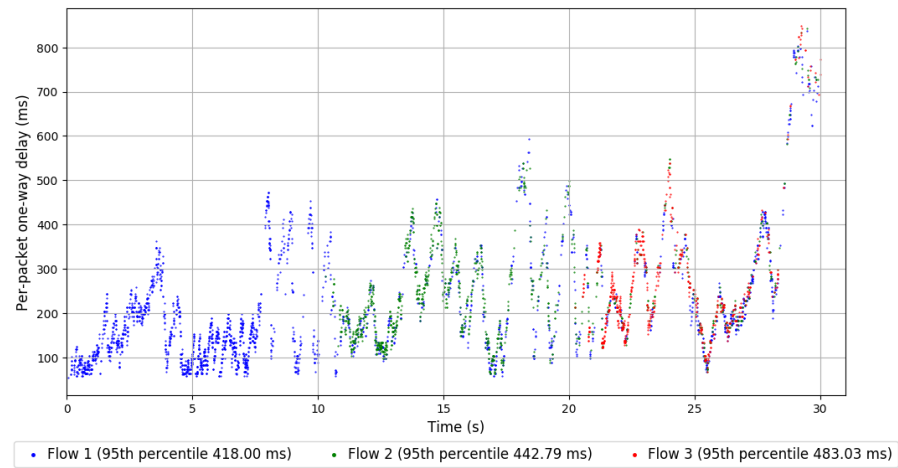
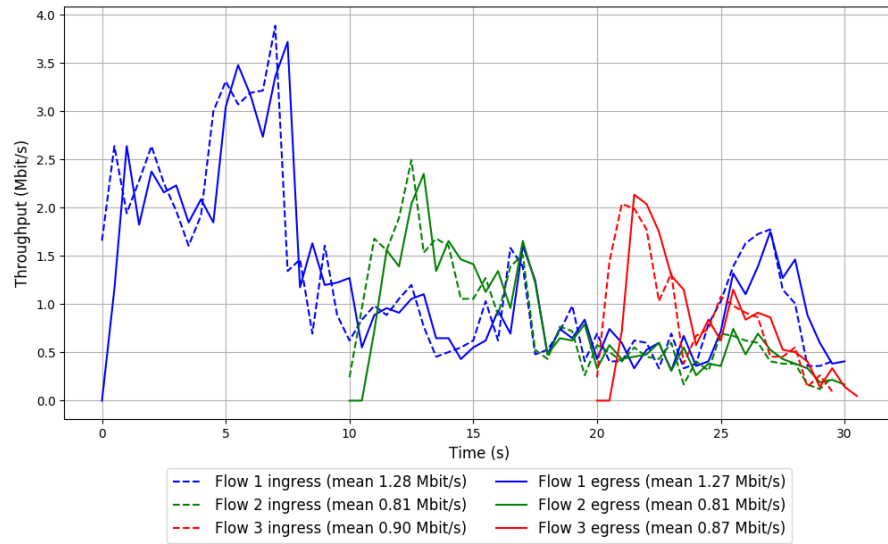
-- Flow 3:

Average throughput: 0.87 Mbit/s

95th percentile per-packet one-way delay: 483.029 ms

Loss rate: 2.48%

### Run 3: Report of TCP Cubic — Data Link

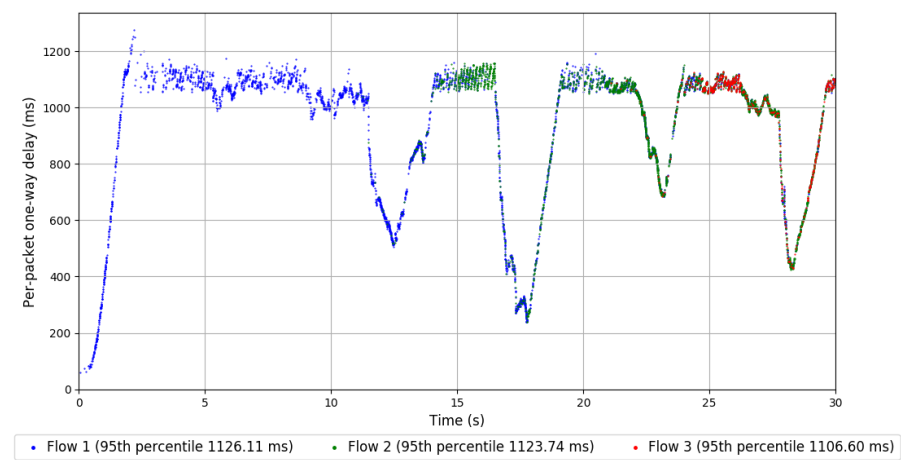
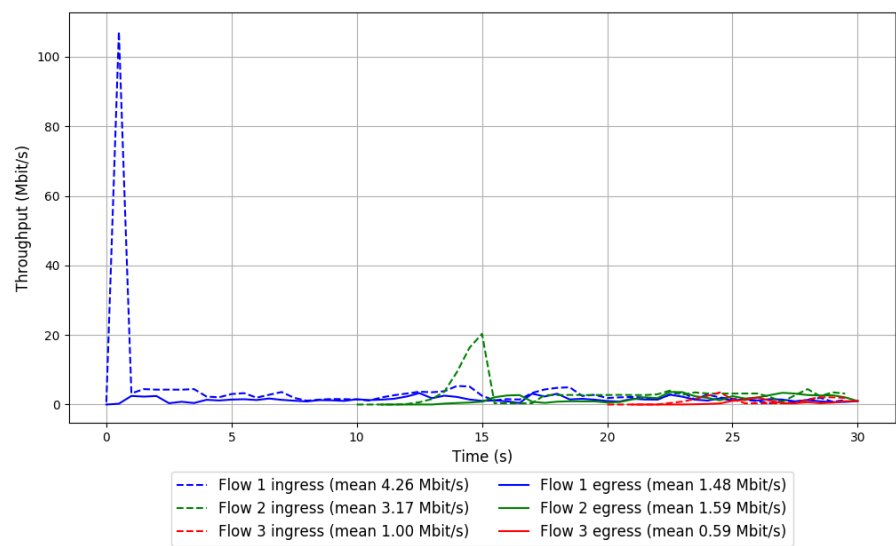


Run 1: Statistics of FillP

Start at: 2018-07-24 12:58:02  
End at: 2018-07-24 12:58:32  
Local clock offset: -0.393 ms  
Remote clock offset: -6.381 ms

# Below is generated by plot.py at 2018-07-24 13:49:59  
# Datalink statistics  
-- Total of 3 flows:  
Average throughput: 2.67 Mbit/s  
95th percentile per-packet one-way delay: 1124.541 ms  
Loss rate: 60.21%  
-- Flow 1:  
Average throughput: 1.48 Mbit/s  
95th percentile per-packet one-way delay: 1126.112 ms  
Loss rate: 65.17%  
-- Flow 2:  
Average throughput: 1.59 Mbit/s  
95th percentile per-packet one-way delay: 1123.740 ms  
Loss rate: 52.29%  
-- Flow 3:  
Average throughput: 0.59 Mbit/s  
95th percentile per-packet one-way delay: 1106.599 ms  
Loss rate: 46.78%

Run 1: Report of FillP — Data Link



Run 2: Statistics of FillP

Start at: 2018-07-24 13:16:52

End at: 2018-07-24 13:17:22

Local clock offset: 4.005 ms

Remote clock offset: 3.541 ms

# Below is generated by plot.py at 2018-07-24 13:49:59

# Datalink statistics

-- Total of 3 flows:

Average throughput: 1.38 Mbit/s

95th percentile per-packet one-way delay: 1136.447 ms

Loss rate: 72.30%

-- Flow 1:

Average throughput: 0.91 Mbit/s

95th percentile per-packet one-way delay: 1133.276 ms

Loss rate: 72.89%

-- Flow 2:

Average throughput: 0.69 Mbit/s

95th percentile per-packet one-way delay: 1135.234 ms

Loss rate: 61.44%

-- Flow 3:

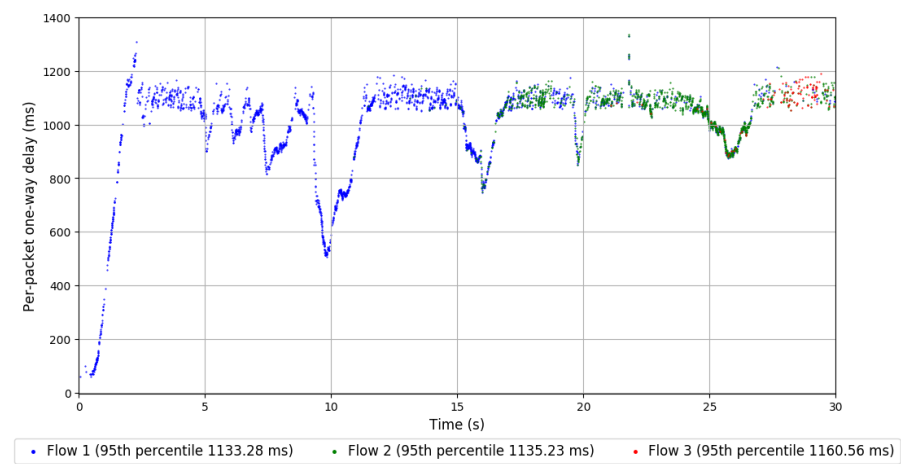
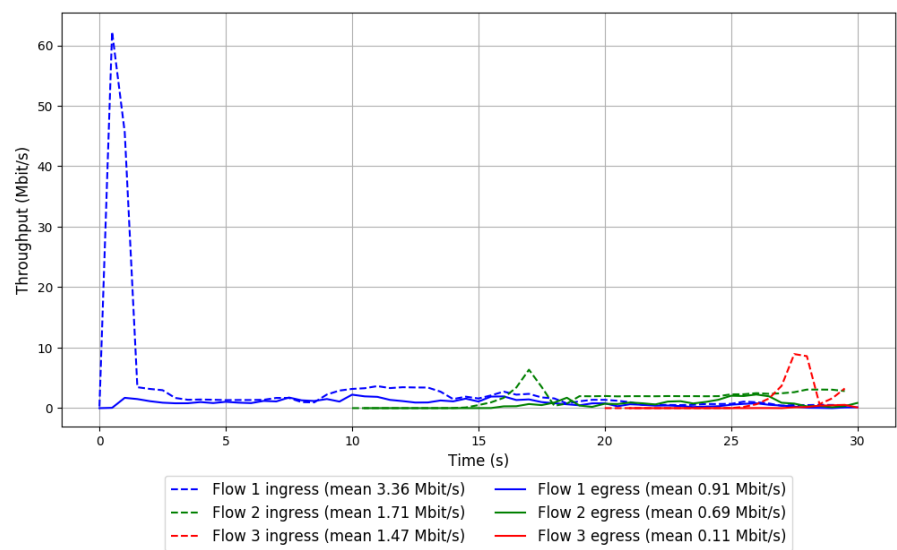
Average throughput: 0.11 Mbit/s

95th percentile per-packet one-way delay: 1160.556 ms

Loss rate: 93.51%



Run 2: Report of FillP — Data Link

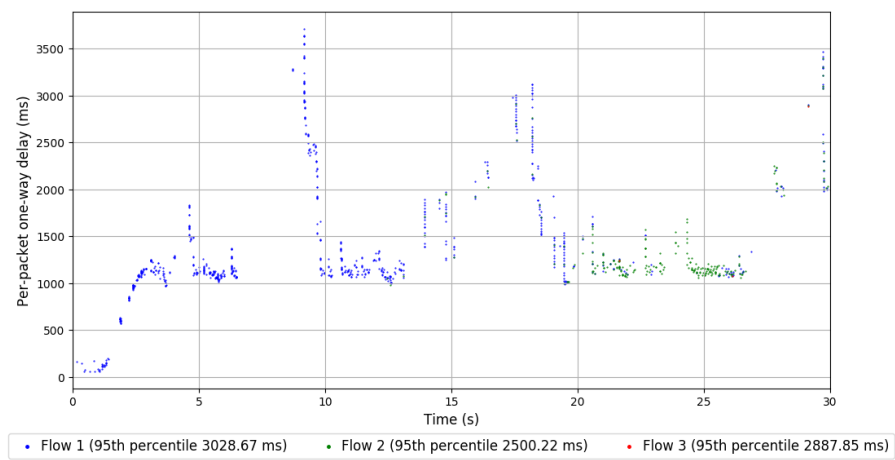
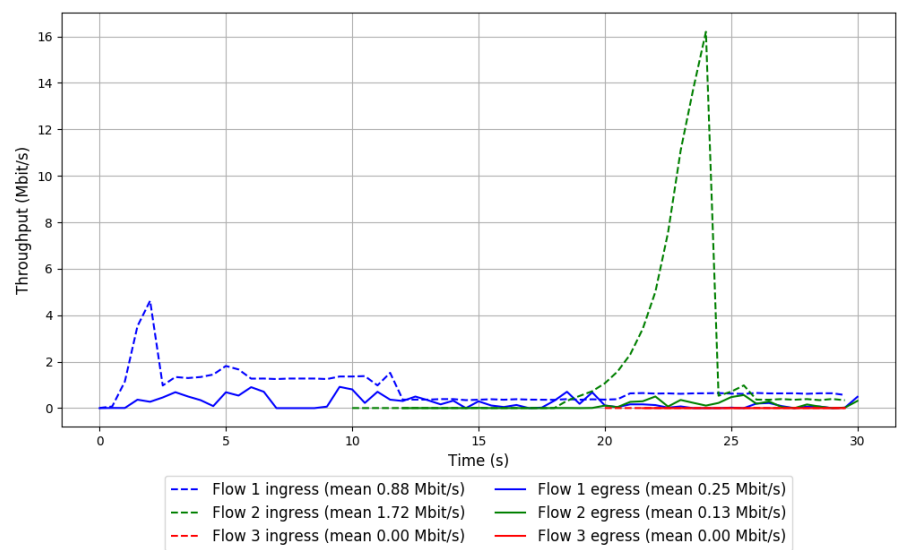


Run 3: Statistics of FillP

Start at: 2018-07-24 13:35:50  
End at: 2018-07-24 13:36:20  
Local clock offset: 1.059 ms  
Remote clock offset: -1.223 ms

# Below is generated by plot.py at 2018-07-24 13:49:59  
# Datalink statistics  
-- Total of 3 flows:  
Average throughput: 0.32 Mbit/s  
95th percentile per-packet one-way delay: 2968.593 ms  
Loss rate: 84.33%  
-- Flow 1:  
Average throughput: 0.25 Mbit/s  
95th percentile per-packet one-way delay: 3028.666 ms  
Loss rate: 72.18%  
-- Flow 2:  
Average throughput: 0.13 Mbit/s  
95th percentile per-packet one-way delay: 2500.219 ms  
Loss rate: 93.64%  
-- Flow 3:  
Average throughput: 0.00 Mbit/s  
95th percentile per-packet one-way delay: 2887.854 ms  
Loss rate: 94.27%

Run 3: Report of FillP — Data Link

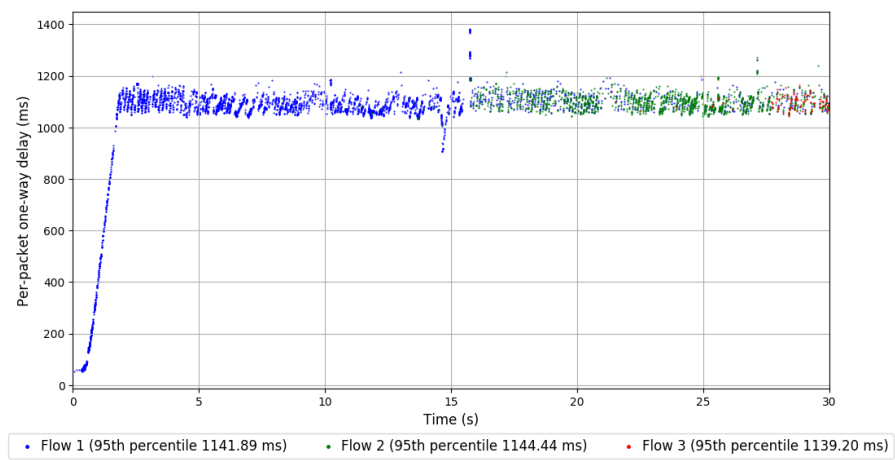
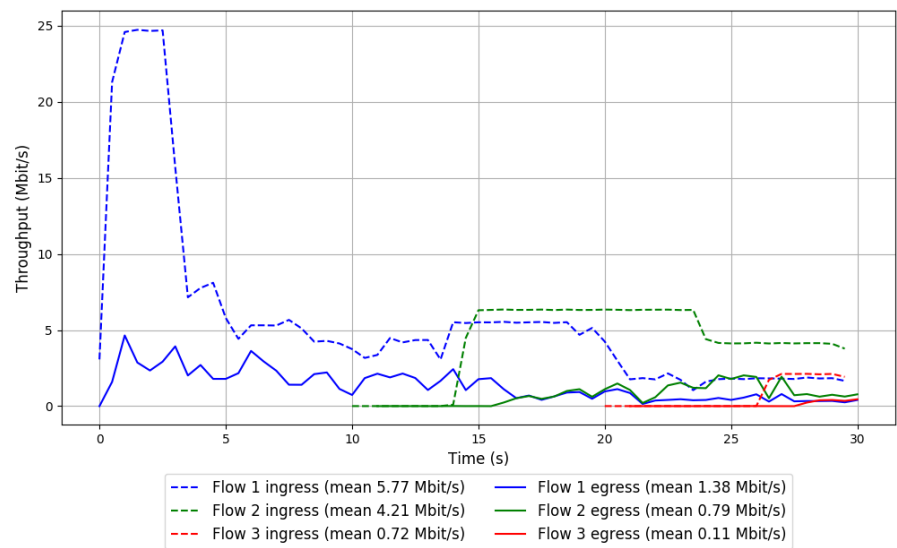


Run 1: Statistics of FillP-Sheep

Start at: 2018-07-24 13:10:14  
End at: 2018-07-24 13:10:44  
Local clock offset: 1.569 ms  
Remote clock offset: -9.398 ms

# Below is generated by plot.py at 2018-07-24 13:50:00  
# Datalink statistics  
-- Total of 3 flows:  
Average throughput: 1.90 Mbit/s  
95th percentile per-packet one-way delay: 1142.725 ms  
Loss rate: 78.44%  
-- Flow 1:  
Average throughput: 1.38 Mbit/s  
95th percentile per-packet one-way delay: 1141.889 ms  
Loss rate: 76.14%  
-- Flow 2:  
Average throughput: 0.79 Mbit/s  
95th percentile per-packet one-way delay: 1144.440 ms  
Loss rate: 82.43%  
-- Flow 3:  
Average throughput: 0.11 Mbit/s  
95th percentile per-packet one-way delay: 1139.201 ms  
Loss rate: 87.07%

Run 1: Report of FillP-Sheep — Data Link

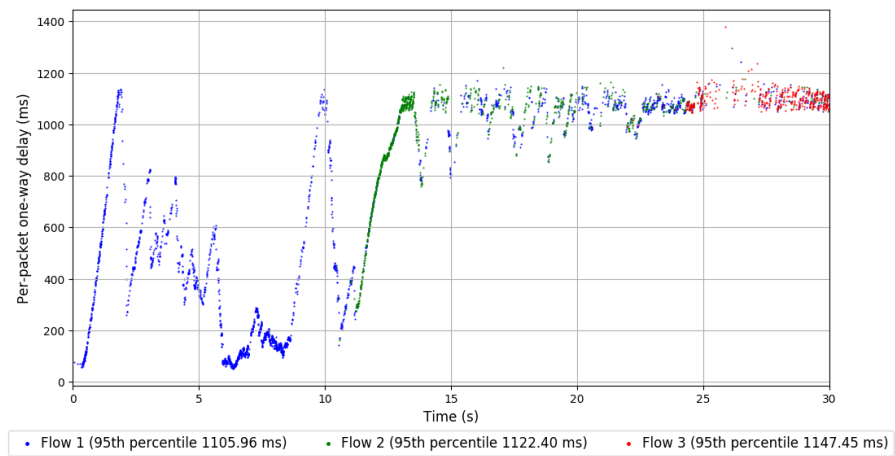
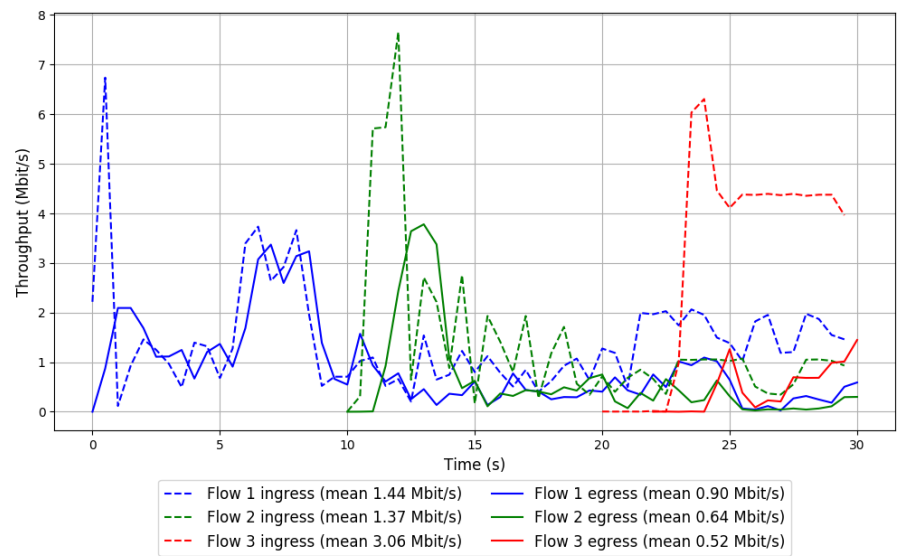


Run 2: Statistics of FillP-Sheep

Start at: 2018-07-24 13:29:04  
End at: 2018-07-24 13:29:34  
Local clock offset: 3.058 ms  
Remote clock offset: -4.045 ms

# Below is generated by plot.py at 2018-07-24 13:50:00  
# Datalink statistics  
-- Total of 3 flows:  
Average throughput: 1.45 Mbit/s  
95th percentile per-packet one-way delay: 1121.426 ms  
Loss rate: 56.89%  
-- Flow 1:  
Average throughput: 0.90 Mbit/s  
95th percentile per-packet one-way delay: 1105.960 ms  
Loss rate: 37.71%  
-- Flow 2:  
Average throughput: 0.64 Mbit/s  
95th percentile per-packet one-way delay: 1122.399 ms  
Loss rate: 54.20%  
-- Flow 3:  
Average throughput: 0.52 Mbit/s  
95th percentile per-packet one-way delay: 1147.447 ms  
Loss rate: 86.43%

Run 2: Report of FillP-Sheep — Data Link



Run 3: Statistics of FillP-Sheep

Start at: 2018-07-24 13:48:02

End at: 2018-07-24 13:48:32

Local clock offset: 1.9 ms

Remote clock offset: 3.895 ms

# Below is generated by plot.py at 2018-07-24 13:50:03

# Datalink statistics

-- Total of 3 flows:

Average throughput: 3.99 Mbit/s

95th percentile per-packet one-way delay: 1120.716 ms

Loss rate: 47.47%

-- Flow 1:

Average throughput: 2.21 Mbit/s

95th percentile per-packet one-way delay: 1069.836 ms

Loss rate: 14.24%

-- Flow 2:

Average throughput: 2.16 Mbit/s

95th percentile per-packet one-way delay: 1130.181 ms

Loss rate: 57.96%

-- Flow 3:

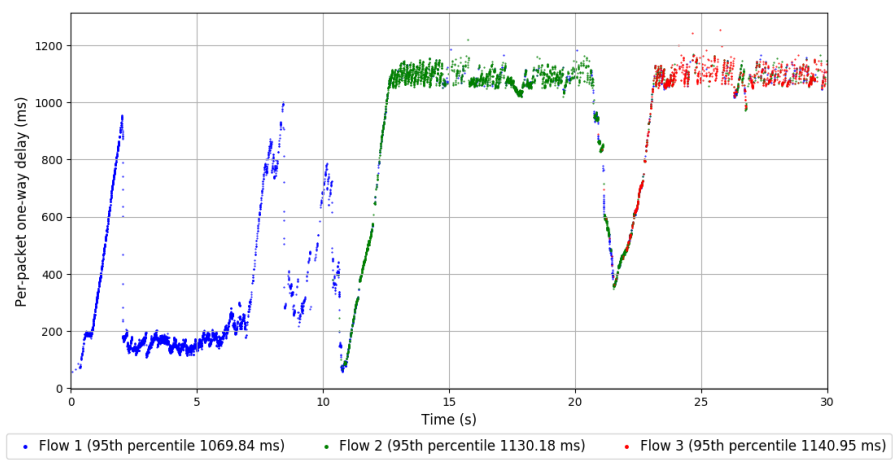
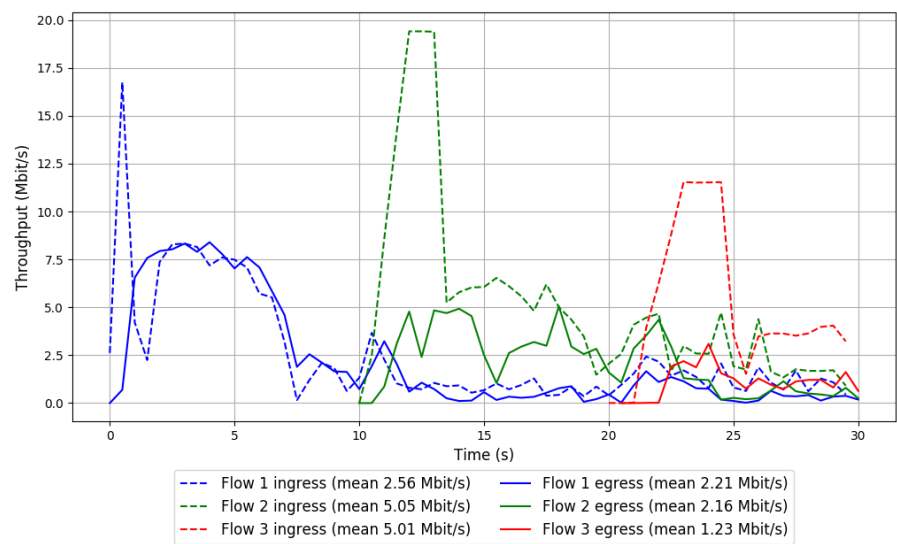
Average throughput: 1.23 Mbit/s

95th percentile per-packet one-way delay: 1140.950 ms

Loss rate: 77.57%



Run 3: Report of FillP-Sheep — Data Link

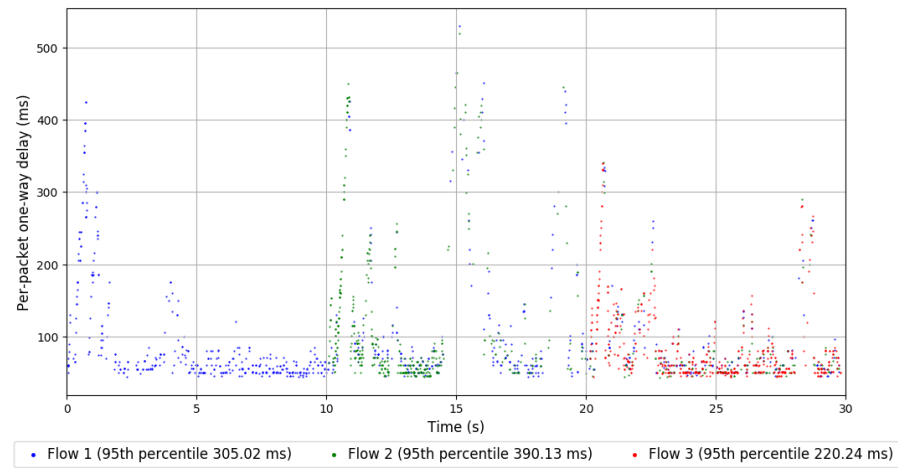
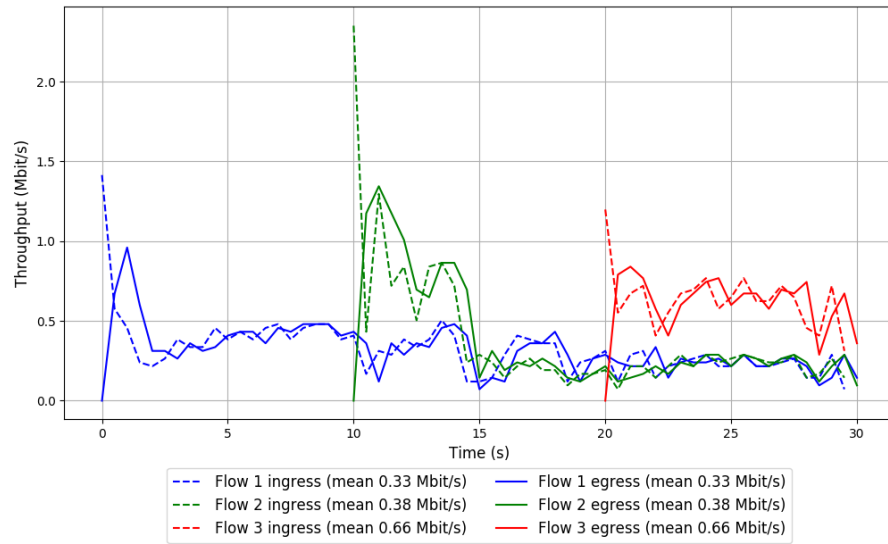


```
Run 1: Statistics of Indigo

Start at: 2018-07-24 13:01:21
End at: 2018-07-24 13:01:51
Local clock offset: 0.246 ms
Remote clock offset: -20.991 ms

# Below is generated by plot.py at 2018-07-24 13:50:03
# Datalink statistics
-- Total of 3 flows:
Average throughput: 0.79 Mbit/s
95th percentile per-packet one-way delay: 300.120 ms
Loss rate: 0.71%
-- Flow 1:
Average throughput: 0.33 Mbit/s
95th percentile per-packet one-way delay: 305.018 ms
Loss rate: 0.62%
-- Flow 2:
Average throughput: 0.38 Mbit/s
95th percentile per-packet one-way delay: 390.132 ms
Loss rate: 0.79%
-- Flow 3:
Average throughput: 0.66 Mbit/s
95th percentile per-packet one-way delay: 220.244 ms
Loss rate: 0.75%
```

## Run 1: Report of Indigo — Data Link



Run 2: Statistics of Indigo

Start at: 2018-07-24 13:20:11

End at: 2018-07-24 13:20:41

Local clock offset: 2.678 ms

Remote clock offset: 3.411 ms

# Below is generated by plot.py at 2018-07-24 13:50:03

# Datalink statistics

-- Total of 3 flows:

Average throughput: 0.89 Mbit/s

95th percentile per-packet one-way delay: 301.426 ms

Loss rate: 0.50%

-- Flow 1:

Average throughput: 0.55 Mbit/s

95th percentile per-packet one-way delay: 201.999 ms

Loss rate: 0.22%

-- Flow 2:

Average throughput: 0.35 Mbit/s

95th percentile per-packet one-way delay: 351.096 ms

Loss rate: 0.52%

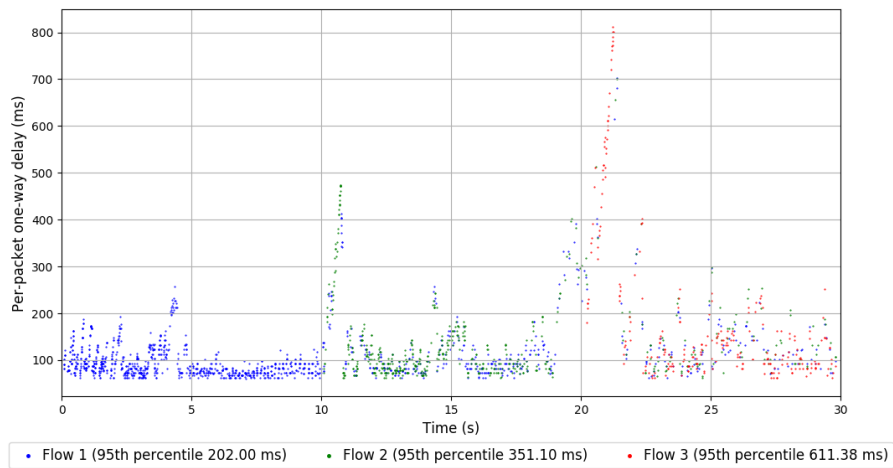
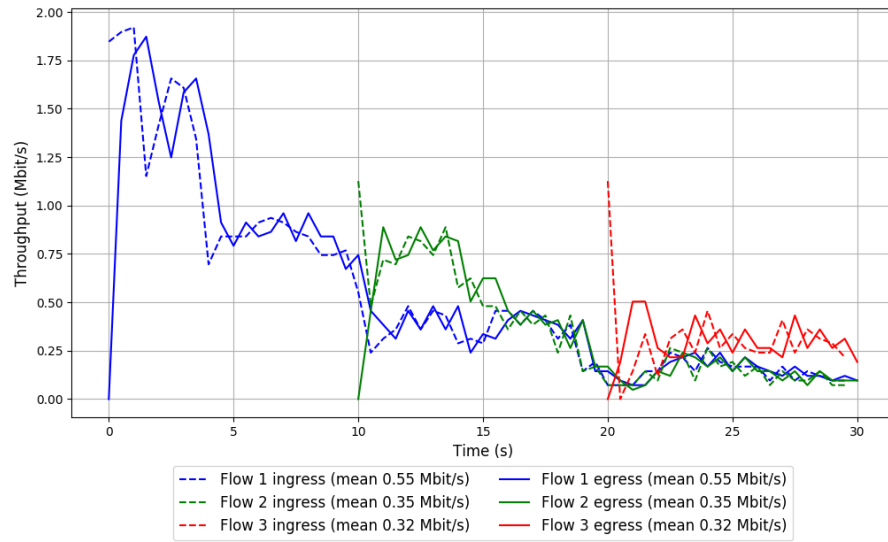
-- Flow 3:

Average throughput: 0.32 Mbit/s

95th percentile per-packet one-way delay: 611.382 ms

Loss rate: 1.92%

## Run 2: Report of Indigo — Data Link



Run 3: Statistics of Indigo

Start at: 2018-07-24 13:39:14

End at: 2018-07-24 13:39:44

Local clock offset: 2.489 ms

Remote clock offset: 2.015 ms

# Below is generated by plot.py at 2018-07-24 13:50:03

# Datalink statistics

-- Total of 3 flows:

Average throughput: 0.68 Mbit/s

95th percentile per-packet one-way delay: 385.178 ms

Loss rate: 0.94%

-- Flow 1:

Average throughput: 0.26 Mbit/s

95th percentile per-packet one-way delay: 439.450 ms

Loss rate: 0.78%

-- Flow 2:

Average throughput: 0.41 Mbit/s

95th percentile per-packet one-way delay: 414.179 ms

Loss rate: 0.74%

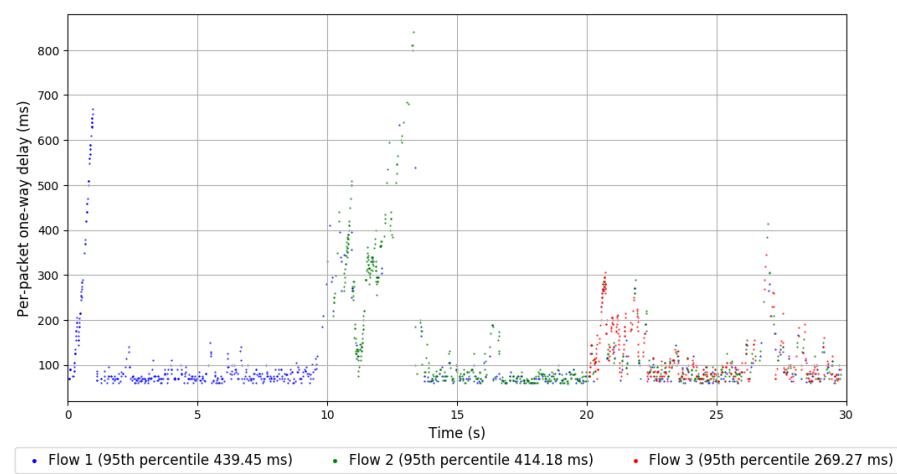
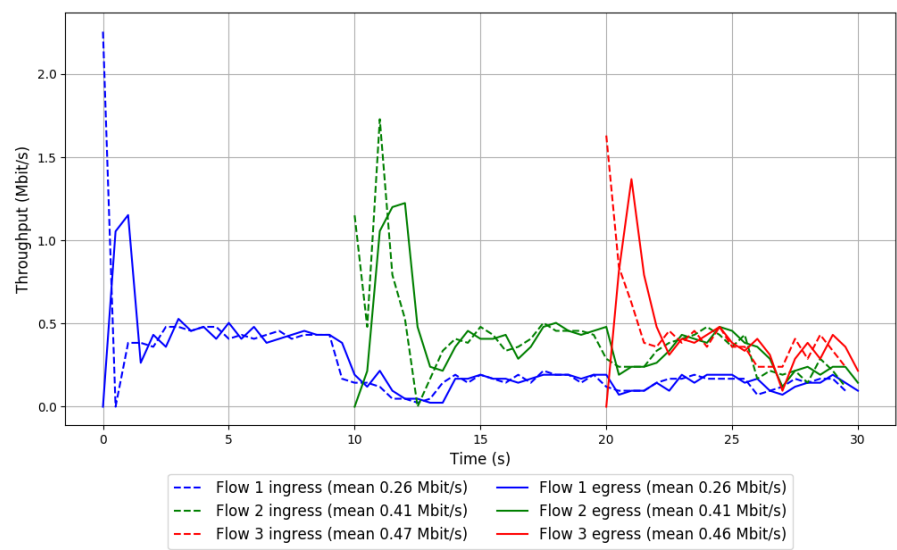
-- Flow 3:

Average throughput: 0.46 Mbit/s

95th percentile per-packet one-way delay: 269.269 ms

Loss rate: 1.58%

Run 3: Report of Indigo — Data Link



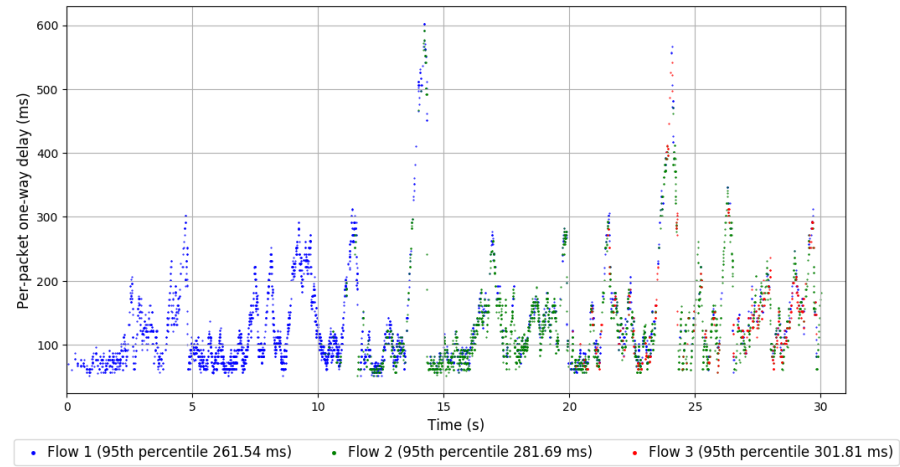
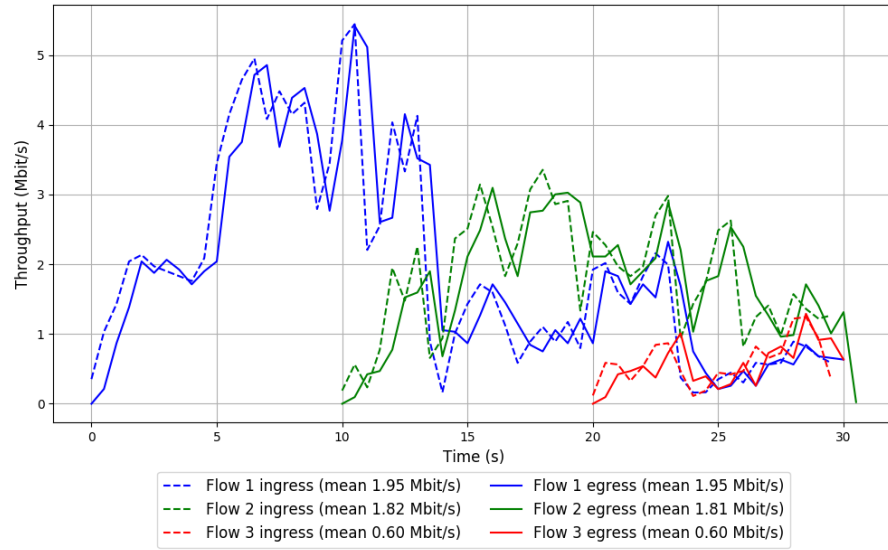
```
Run 1: Statistics of LEDBAT

Start at: 2018-07-24 12:53:37
End at: 2018-07-24 12:54:07
Local clock offset: 2.464 ms
Remote clock offset: -10.064 ms

# Below is generated by plot.py at 2018-07-24 13:50:03
# Datalink statistics
-- Total of 3 flows:
Average throughput: 3.34 Mbit/s
95th percentile per-packet one-way delay: 271.792 ms
Loss rate: 0.57%
-- Flow 1:
Average throughput: 1.95 Mbit/s
95th percentile per-packet one-way delay: 261.542 ms
Loss rate: 0.36%
-- Flow 2:
Average throughput: 1.81 Mbit/s
95th percentile per-packet one-way delay: 281.685 ms
Loss rate: 0.68%
-- Flow 3:
Average throughput: 0.60 Mbit/s
95th percentile per-packet one-way delay: 301.814 ms
Loss rate: 1.97%
```



# Run 1: Report of LEDBAT — Data Link

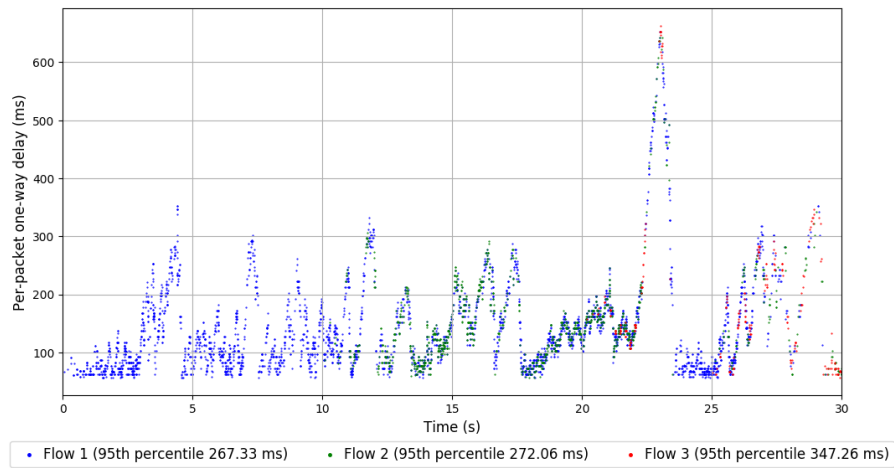
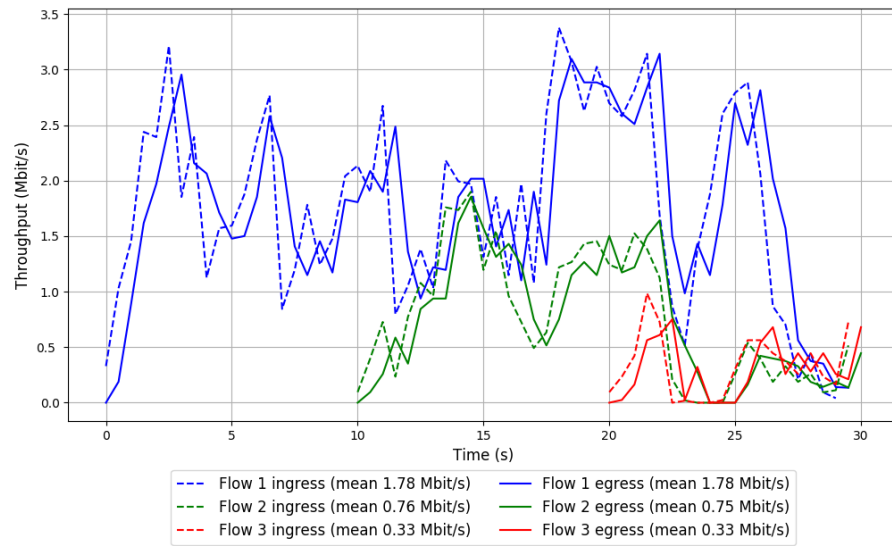


Run 2: Statistics of LEDBAT

Start at: 2018-07-24 13:12:26  
End at: 2018-07-24 13:12:56  
Local clock offset: 0.837 ms  
Remote clock offset: -3.378 ms

# Below is generated by plot.py at 2018-07-24 13:50:03  
# Datalink statistics  
-- Total of 3 flows:  
Average throughput: 2.35 Mbit/s  
95th percentile per-packet one-way delay: 272.539 ms  
Loss rate: 0.33%  
-- Flow 1:  
Average throughput: 1.78 Mbit/s  
95th percentile per-packet one-way delay: 267.329 ms  
Loss rate: 0.16%  
-- Flow 2:  
Average throughput: 0.75 Mbit/s  
95th percentile per-packet one-way delay: 272.065 ms  
Loss rate: 0.54%  
-- Flow 3:  
Average throughput: 0.33 Mbit/s  
95th percentile per-packet one-way delay: 347.259 ms  
Loss rate: 2.14%

## Run 2: Report of LEDBAT — Data Link



Run 3: Statistics of LEDBAT

Start at: 2018-07-24 13:31:21

End at: 2018-07-24 13:31:51

Local clock offset: 0.425 ms

Remote clock offset: 7.188 ms

# Below is generated by plot.py at 2018-07-24 13:50:03

# Datalink statistics

-- Total of 3 flows:

Average throughput: 2.70 Mbit/s

95th percentile per-packet one-way delay: 275.702 ms

Loss rate: 0.53%

-- Flow 1:

Average throughput: 1.72 Mbit/s

95th percentile per-packet one-way delay: 265.364 ms

Loss rate: 0.18%

-- Flow 2:

Average throughput: 1.05 Mbit/s

95th percentile per-packet one-way delay: 285.663 ms

Loss rate: 1.49%

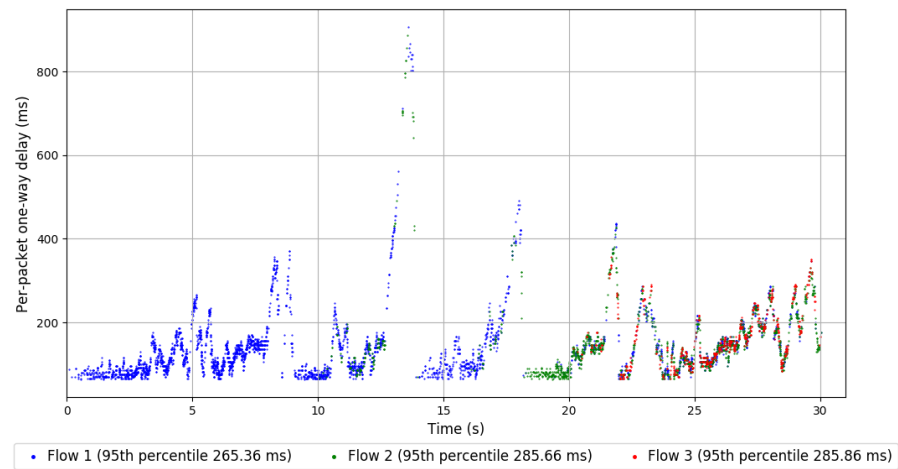
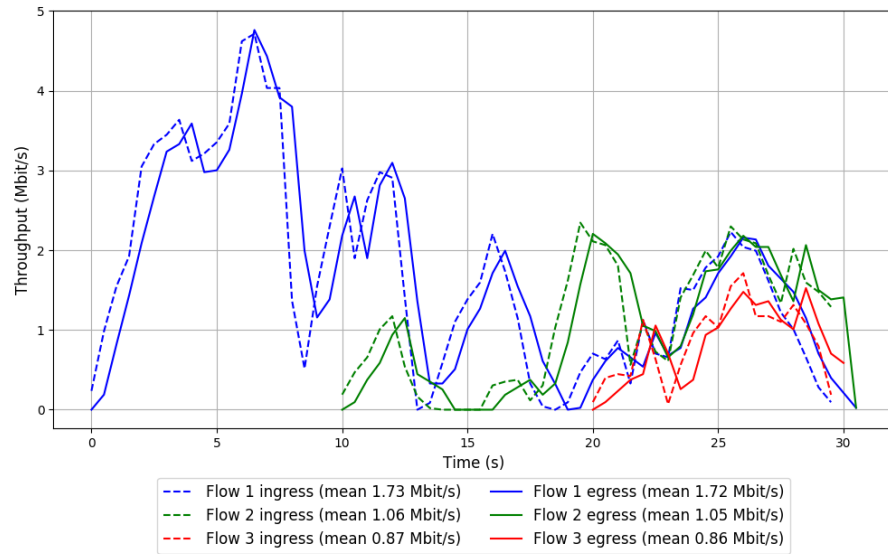
-- Flow 3:

Average throughput: 0.86 Mbit/s

95th percentile per-packet one-way delay: 285.858 ms

Loss rate: 0.28%

### Run 3: Report of LEDBAT — Data Link

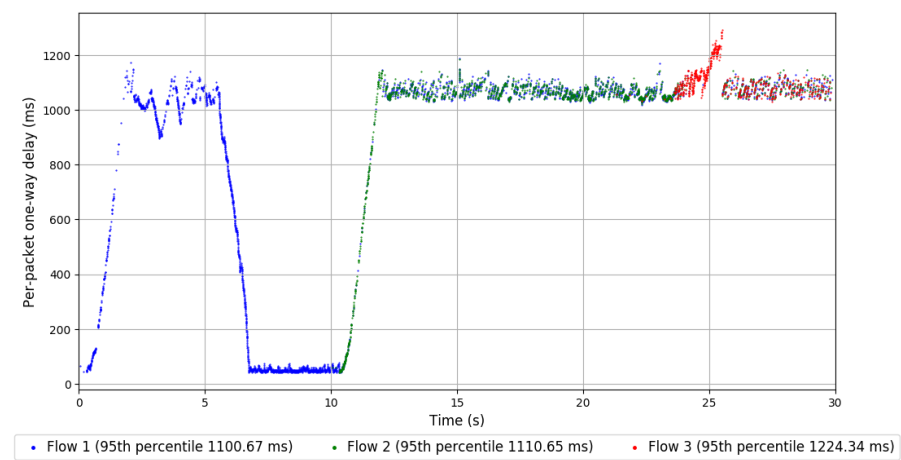
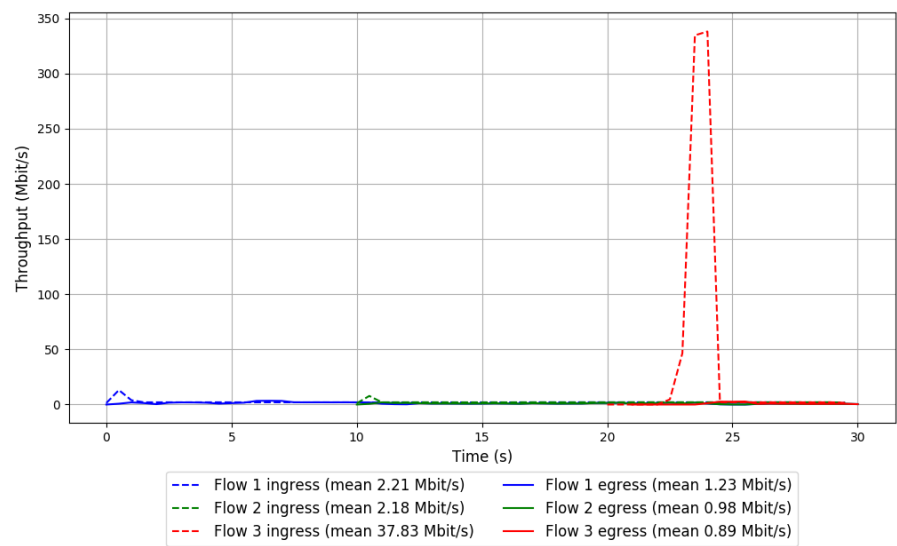


```
Run 1: Statistics of PCC-Allegro

Start at: 2018-07-24 13:05:47
End at: 2018-07-24 13:06:17
Local clock offset: 3.682 ms
Remote clock offset: -20.629 ms

# Below is generated by plot.py at 2018-07-24 13:50:07
# Datalink statistics
-- Total of 3 flows:
Average throughput: 2.13 Mbit/s
95th percentile per-packet one-way delay: 1125.010 ms
Loss rate: 86.81%
-- Flow 1:
Average throughput: 1.23 Mbit/s
95th percentile per-packet one-way delay: 1100.672 ms
Loss rate: 44.50%
-- Flow 2:
Average throughput: 0.98 Mbit/s
95th percentile per-packet one-way delay: 1110.652 ms
Loss rate: 55.18%
-- Flow 3:
Average throughput: 0.89 Mbit/s
95th percentile per-packet one-way delay: 1224.344 ms
Loss rate: 97.98%
```

Run 1: Report of PCC-Allegro — Data Link



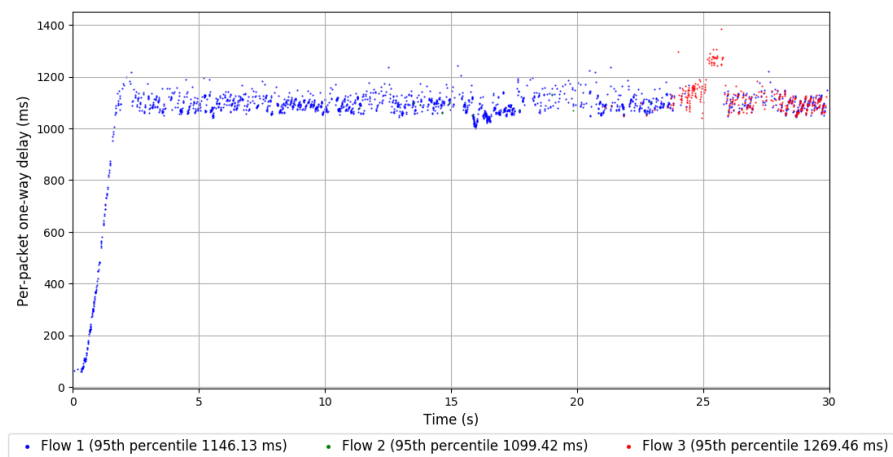
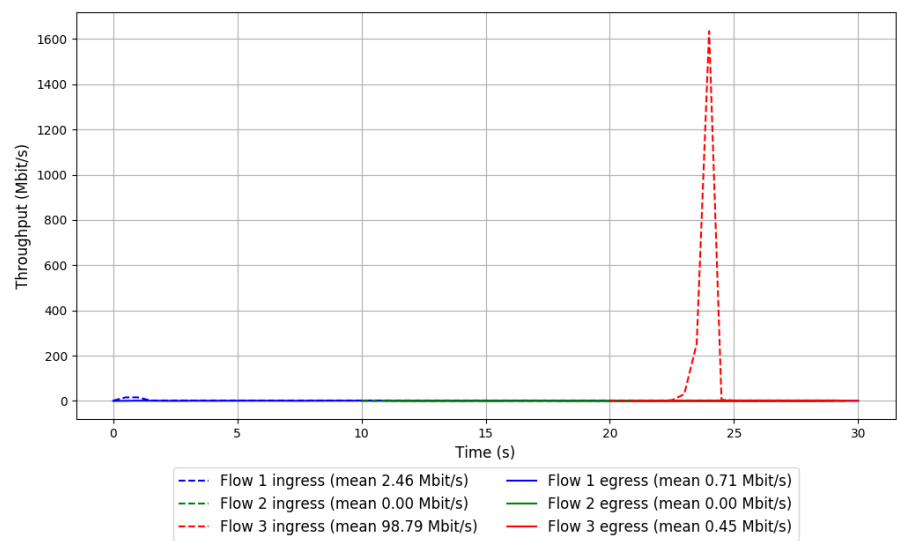
Run 2: Statistics of PCC-Allegro

Start at: 2018-07-24 13:24:37  
End at: 2018-07-24 13:25:07  
Local clock offset: 0.542 ms  
Remote clock offset: -2.797 ms

# Below is generated by plot.py at 2018-07-24 13:50:16  
# Datalink statistics  
-- Total of 3 flows:  
Average throughput: 0.84 Mbit/s  
95th percentile per-packet one-way delay: 1158.407 ms  
Loss rate: 97.59%  
-- Flow 1:  
Average throughput: 0.71 Mbit/s  
95th percentile per-packet one-way delay: 1146.127 ms  
Loss rate: 71.15%  
-- Flow 2:  
Average throughput: 0.00 Mbit/s  
95th percentile per-packet one-way delay: 1099.421 ms  
Loss rate: 64.60%  
-- Flow 3:  
Average throughput: 0.45 Mbit/s  
95th percentile per-packet one-way delay: 1269.460 ms  
Loss rate: 99.59%



Run 2: Report of PCC-Allegro — Data Link



Run 3: Statistics of PCC-Allegro

Start at: 2018-07-24 13:43:37

End at: 2018-07-24 13:44:07

Local clock offset: 0.968 ms

Remote clock offset: 8.093 ms

# Below is generated by plot.py at 2018-07-24 13:50:20

# Datalink statistics

-- Total of 3 flows:

Average throughput: 2.30 Mbit/s

95th percentile per-packet one-way delay: 1136.692 ms

Loss rate: 93.63%

-- Flow 1:

Average throughput: 1.38 Mbit/s

95th percentile per-packet one-way delay: 1112.591 ms

Loss rate: 34.58%

-- Flow 2:

Average throughput: 1.02 Mbit/s

95th percentile per-packet one-way delay: 1133.382 ms

Loss rate: 59.51%

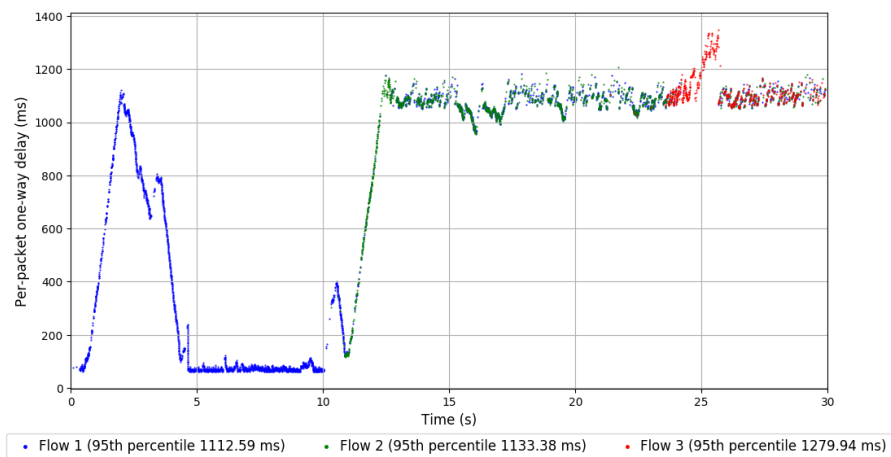
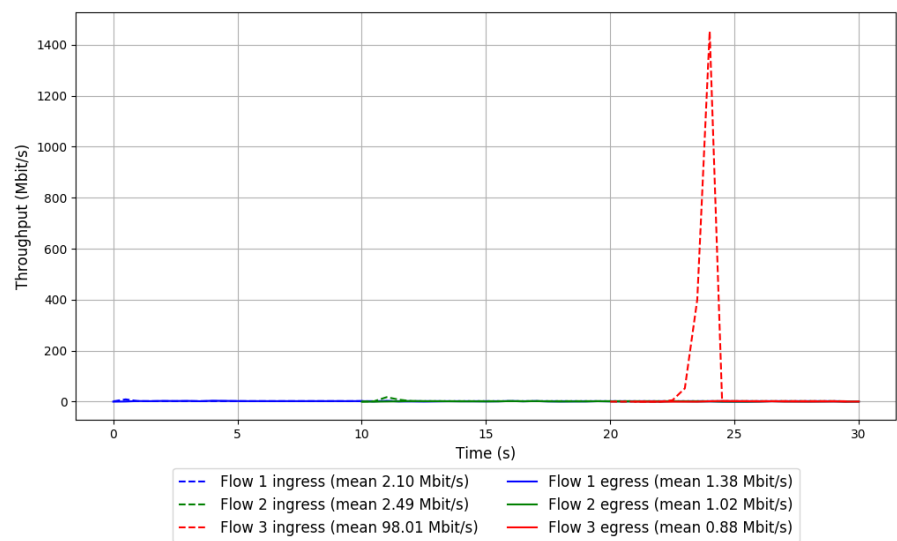
-- Flow 3:

Average throughput: 0.88 Mbit/s

95th percentile per-packet one-way delay: 1279.941 ms

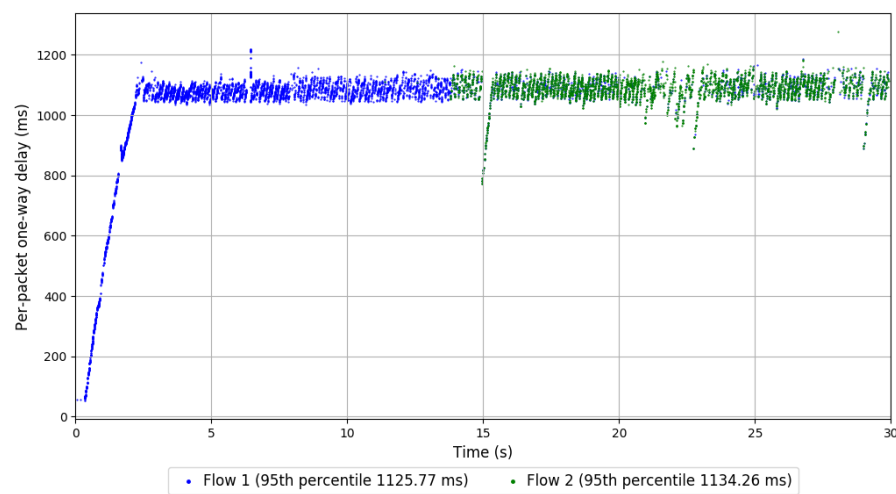
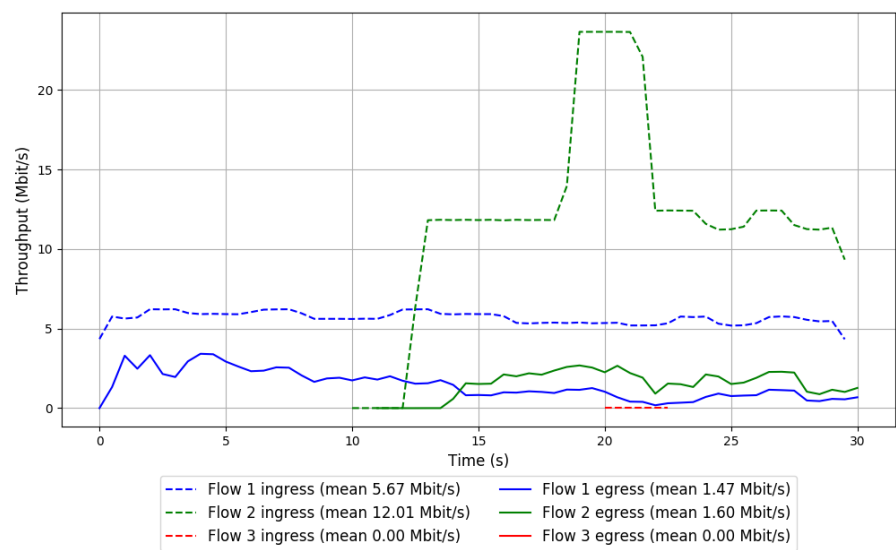
Loss rate: 99.22%

Run 3: Report of PCC-Allegro — Data Link



Run 1: Statistics of PCC-Expr  
  
Start at: 2018-07-24 13:09:06  
End at: 2018-07-24 13:09:36  
Local clock offset: 3.475 ms  
Remote clock offset: -15.855 ms

Run 1: Report of PCC-Expr — Data Link



Run 2: Statistics of PCC-Expr

Start at: 2018-07-24 13:27:56

End at: 2018-07-24 13:28:26

Local clock offset: 1.898 ms

Remote clock offset: 5.094 ms

# Below is generated by plot.py at 2018-07-24 13:50:20

# Datalink statistics

-- Total of 3 flows:

Average throughput: 2.87 Mbit/s

95th percentile per-packet one-way delay: 1142.038 ms

Loss rate: 71.77%

-- Flow 1:

Average throughput: 1.88 Mbit/s

95th percentile per-packet one-way delay: 1139.091 ms

Loss rate: 66.80%

-- Flow 2:

Average throughput: 1.57 Mbit/s

95th percentile per-packet one-way delay: 1145.375 ms

Loss rate: 78.03%

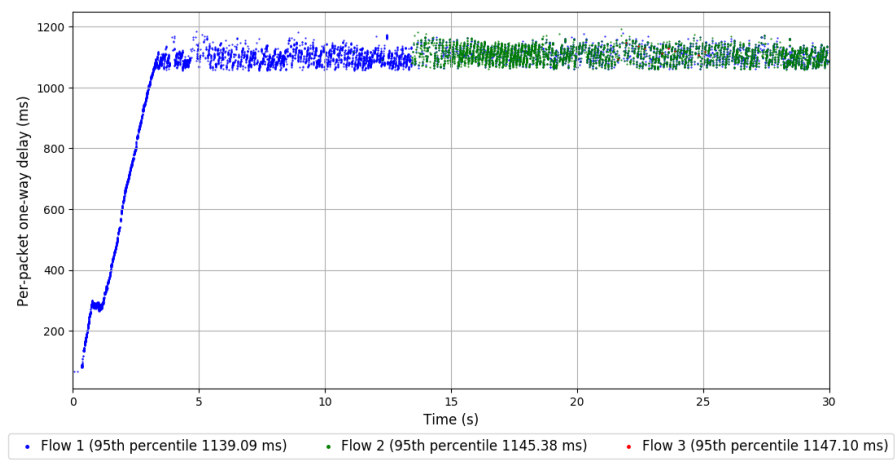
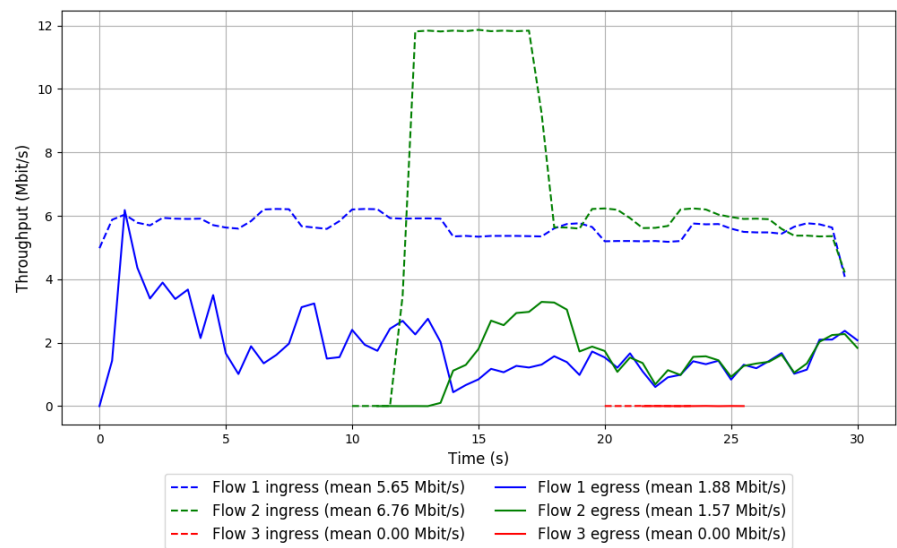
-- Flow 3:

Average throughput: 0.00 Mbit/s

95th percentile per-packet one-way delay: 1147.096 ms

Loss rate: 37.52%

Run 2: Report of PCC-Expr — Data Link



Run 3: Statistics of PCC-Expr

Start at: 2018-07-24 13:46:56

End at: 2018-07-24 13:47:26

Local clock offset: 3.452 ms

Remote clock offset: 4.281 ms

# Below is generated by plot.py at 2018-07-24 13:50:20

# Datalink statistics

-- Total of 3 flows:

Average throughput: 2.45 Mbit/s

95th percentile per-packet one-way delay: 1135.910 ms

Loss rate: 68.90%

-- Flow 1:

Average throughput: 2.14 Mbit/s

95th percentile per-packet one-way delay: 1129.242 ms

Loss rate: 59.98%

-- Flow 2:

Average throughput: 0.00 Mbit/s

95th percentile per-packet one-way delay: 1134.211 ms

Loss rate: 70.33%

-- Flow 3:

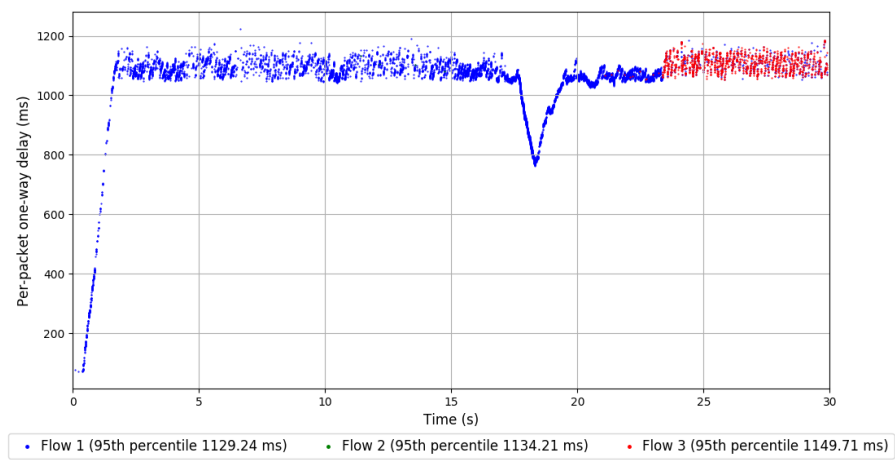
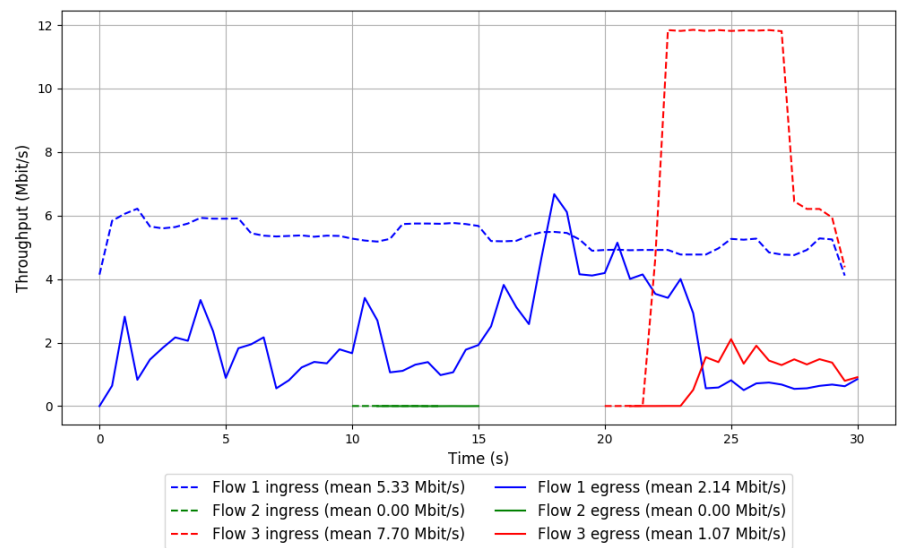
Average throughput: 1.07 Mbit/s

95th percentile per-packet one-way delay: 1149.715 ms

Loss rate: 87.59%



Run 3: Report of PCC-Expr — Data Link

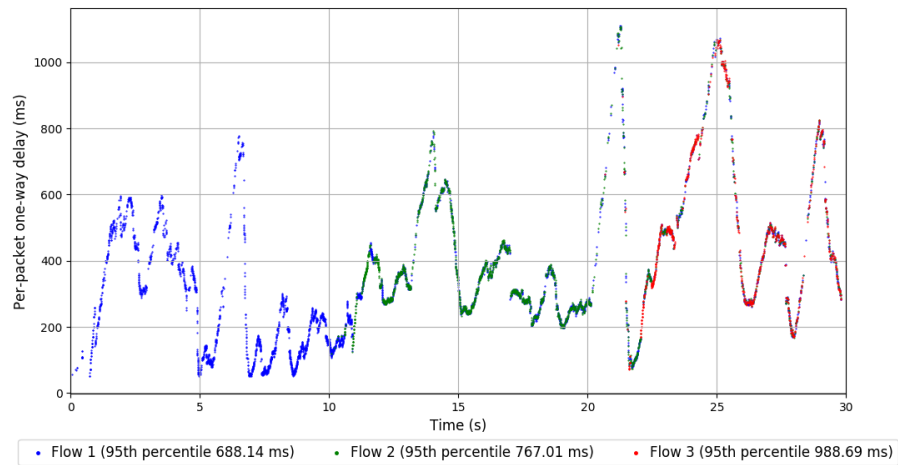
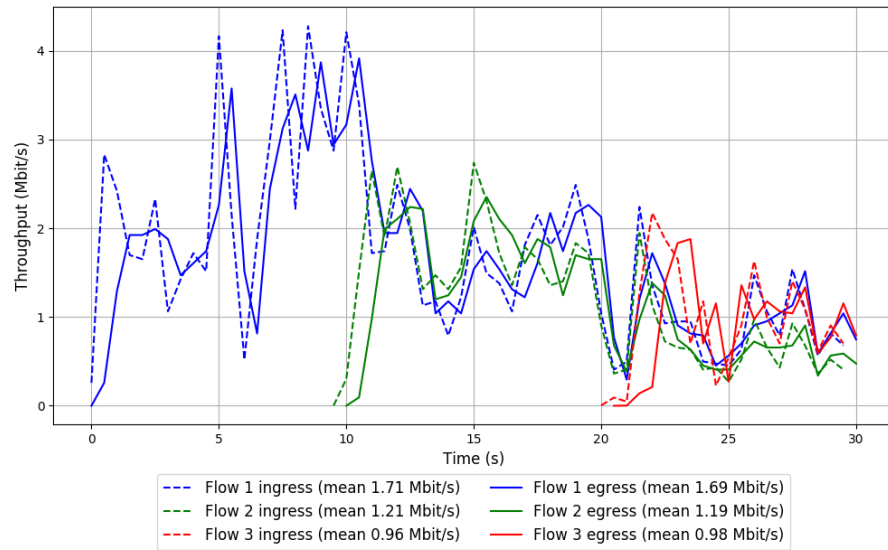


Run 1: Statistics of QUIC Cubic

Start at: 2018-07-24 12:56:56  
End at: 2018-07-24 12:57:26  
Local clock offset: 0.715 ms  
Remote clock offset: -12.278 ms

# Below is generated by plot.py at 2018-07-24 13:50:20  
# Datalink statistics  
-- Total of 3 flows:  
Average throughput: 2.78 Mbit/s  
95th percentile per-packet one-way delay: 765.411 ms  
Loss rate: 2.07%  
-- Flow 1:  
Average throughput: 1.69 Mbit/s  
95th percentile per-packet one-way delay: 688.145 ms  
Loss rate: 1.53%  
-- Flow 2:  
Average throughput: 1.19 Mbit/s  
95th percentile per-packet one-way delay: 767.008 ms  
Loss rate: 2.17%  
-- Flow 3:  
Average throughput: 0.98 Mbit/s  
95th percentile per-packet one-way delay: 988.688 ms  
Loss rate: 4.72%

## Run 1: Report of QUIC Cubic — Data Link

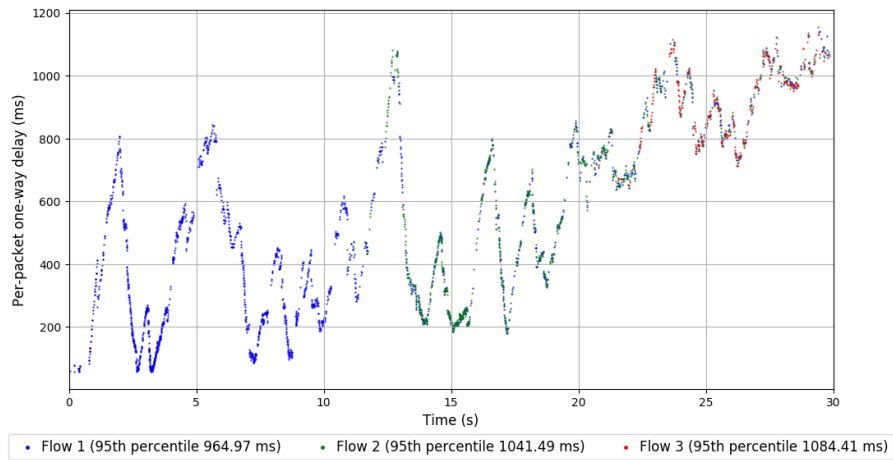
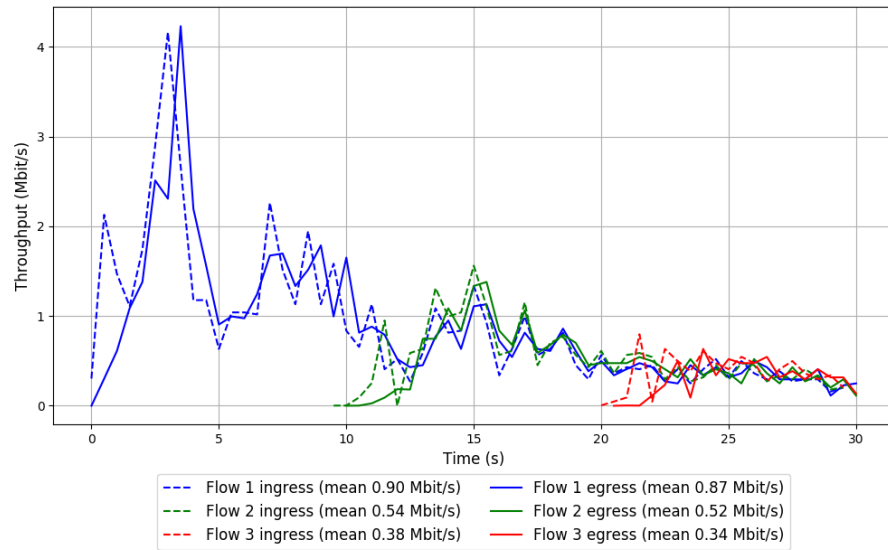


Run 2: Statistics of QUIC Cubic

Start at: 2018-07-24 13:15:45  
End at: 2018-07-24 13:16:15  
Local clock offset: 2.307 ms  
Remote clock offset: -1.143 ms

# Below is generated by plot.py at 2018-07-24 13:50:20  
# Datalink statistics  
-- Total of 3 flows:  
Average throughput: 1.32 Mbit/s  
95th percentile per-packet one-way delay: 1021.394 ms  
Loss rate: 4.76%  
-- Flow 1:  
Average throughput: 0.87 Mbit/s  
95th percentile per-packet one-way delay: 964.971 ms  
Loss rate: 2.67%  
-- Flow 2:  
Average throughput: 0.52 Mbit/s  
95th percentile per-packet one-way delay: 1041.491 ms  
Loss rate: 5.60%  
-- Flow 3:  
Average throughput: 0.34 Mbit/s  
95th percentile per-packet one-way delay: 1084.415 ms  
Loss rate: 17.46%

## Run 2: Report of QUIC Cubic — Data Link

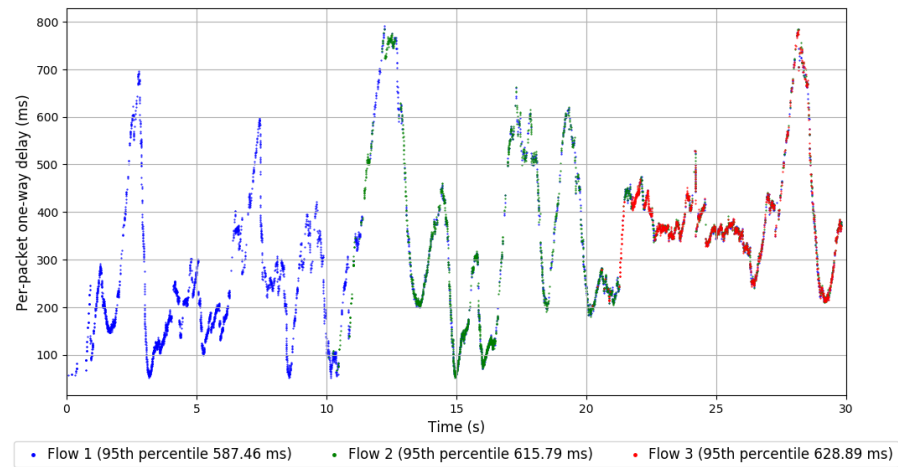
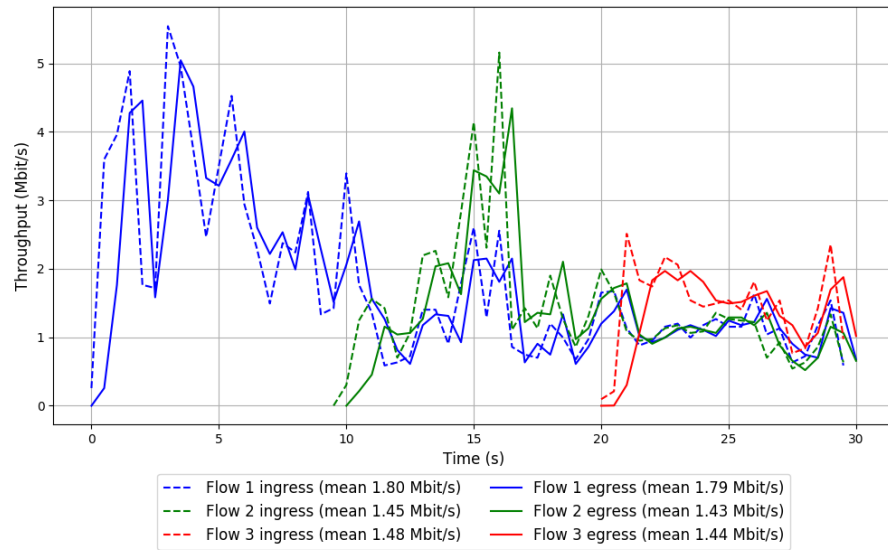


Run 3: Statistics of QUIC Cubic

Start at: 2018-07-24 13:34:40  
End at: 2018-07-24 13:35:10  
Local clock offset: 3.241 ms  
Remote clock offset: -2.301 ms

# Below is generated by plot.py at 2018-07-24 13:50:20  
# Datalink statistics  
-- Total of 3 flows:  
Average throughput: 3.20 Mbit/s  
95th percentile per-packet one-way delay: 598.178 ms  
Loss rate: 1.93%  
-- Flow 1:  
Average throughput: 1.79 Mbit/s  
95th percentile per-packet one-way delay: 587.455 ms  
Loss rate: 1.18%  
-- Flow 2:  
Average throughput: 1.43 Mbit/s  
95th percentile per-packet one-way delay: 615.786 ms  
Loss rate: 1.92%  
-- Flow 3:  
Average throughput: 1.44 Mbit/s  
95th percentile per-packet one-way delay: 628.895 ms  
Loss rate: 4.76%

### Run 3: Report of QUIC Cubic — Data Link



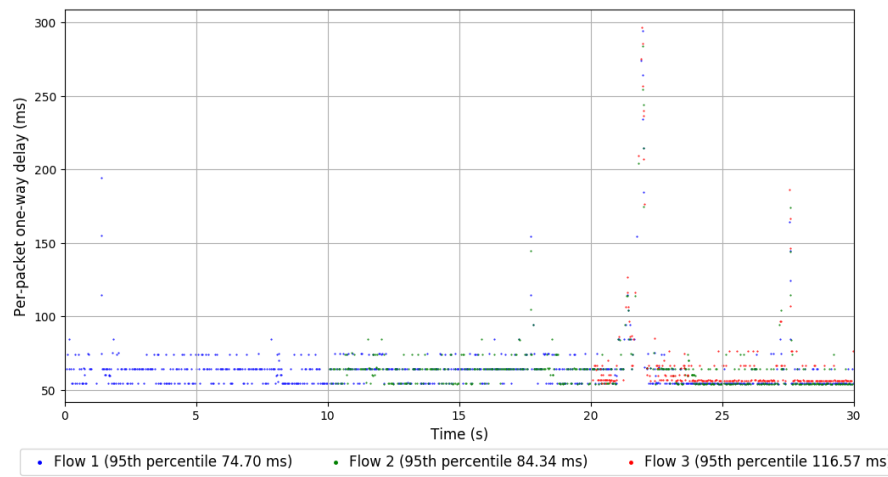
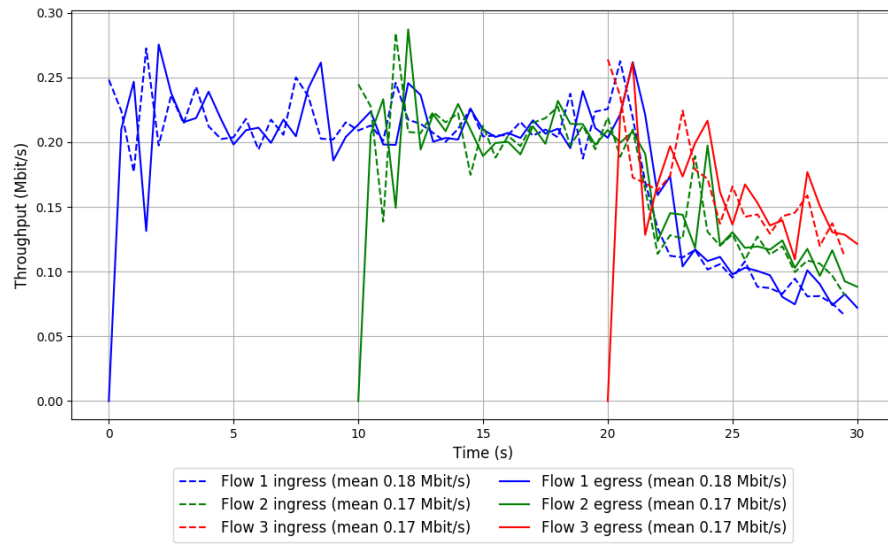
```
Run 1: Statistics of SCReAM

Start at: 2018-07-24 13:11:20
End at: 2018-07-24 13:11:50
Local clock offset: 1.232 ms
Remote clock offset: -4.992 ms

# Below is generated by plot.py at 2018-07-24 13:50:20
# Datalink statistics
-- Total of 3 flows:
Average throughput: 0.35 Mbit/s
95th percentile per-packet one-way delay: 84.365 ms
Loss rate: 0.16%
-- Flow 1:
Average throughput: 0.18 Mbit/s
95th percentile per-packet one-way delay: 74.702 ms
Loss rate: 0.00%
-- Flow 2:
Average throughput: 0.17 Mbit/s
95th percentile per-packet one-way delay: 84.341 ms
Loss rate: 0.35%
-- Flow 3:
Average throughput: 0.17 Mbit/s
95th percentile per-packet one-way delay: 116.571 ms
Loss rate: 0.29%
```



# Run 1: Report of SReAM — Data Link



Run 2: Statistics of SCReAM

Start at: 2018-07-24 13:30:15

End at: 2018-07-24 13:30:45

Local clock offset: 2.697 ms

Remote clock offset: 0.555 ms

# Below is generated by plot.py at 2018-07-24 13:50:20

# Datalink statistics

-- Total of 3 flows:

Average throughput: 0.36 Mbit/s

95th percentile per-packet one-way delay: 78.890 ms

Loss rate: 0.17%

-- Flow 1:

Average throughput: 0.19 Mbit/s

95th percentile per-packet one-way delay: 78.998 ms

Loss rate: 0.10%

-- Flow 2:

Average throughput: 0.15 Mbit/s

95th percentile per-packet one-way delay: 78.563 ms

Loss rate: 0.16%

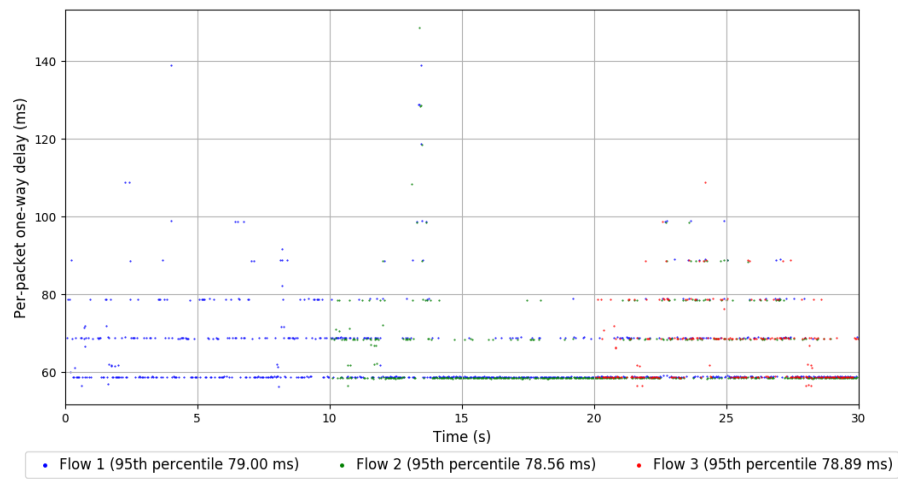
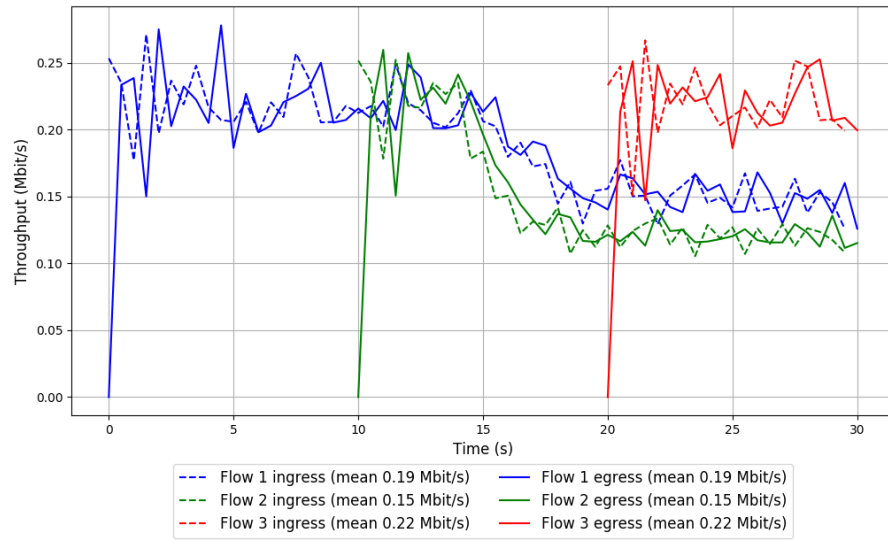
-- Flow 3:

Average throughput: 0.22 Mbit/s

95th percentile per-packet one-way delay: 78.889 ms

Loss rate: 0.35%

## Run 2: Report of SReAM — Data Link

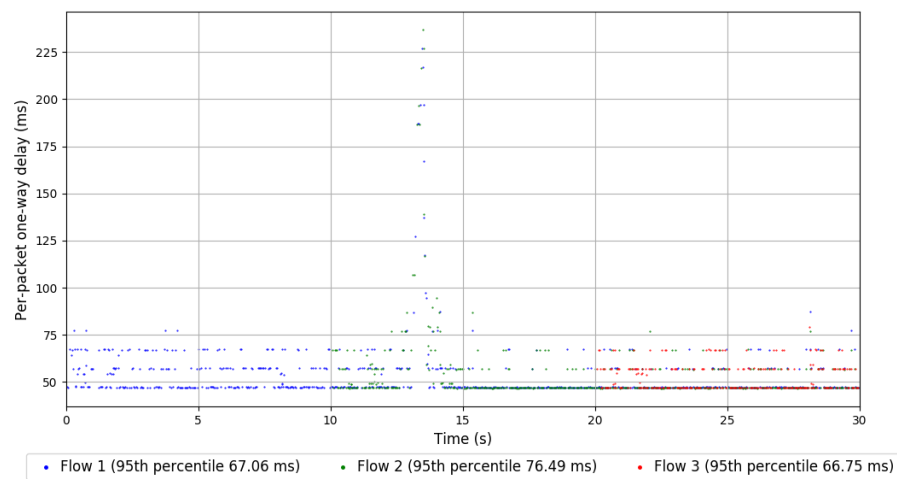
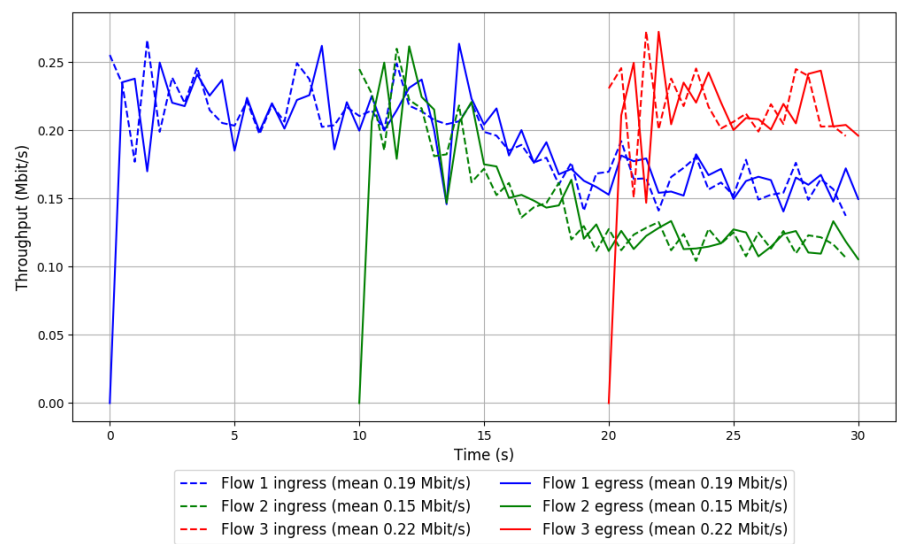


Run 3: Statistics of SCReAM

Start at: 2018-07-24 13:49:08  
End at: 2018-07-24 13:49:38  
Local clock offset: 3.406 ms  
Remote clock offset: -2.765 ms

# Below is generated by plot.py at 2018-07-24 13:50:20  
# Datalink statistics  
-- Total of 3 flows:  
Average throughput: 0.36 Mbit/s  
95th percentile per-packet one-way delay: 67.007 ms  
Loss rate: 0.11%  
-- Flow 1:  
Average throughput: 0.19 Mbit/s  
95th percentile per-packet one-way delay: 67.065 ms  
Loss rate: 0.00%  
-- Flow 2:  
Average throughput: 0.15 Mbit/s  
95th percentile per-packet one-way delay: 76.491 ms  
Loss rate: 0.16%  
-- Flow 3:  
Average throughput: 0.22 Mbit/s  
95th percentile per-packet one-way delay: 66.750 ms  
Loss rate: 0.35%

Run 3: Report of SReAM — Data Link

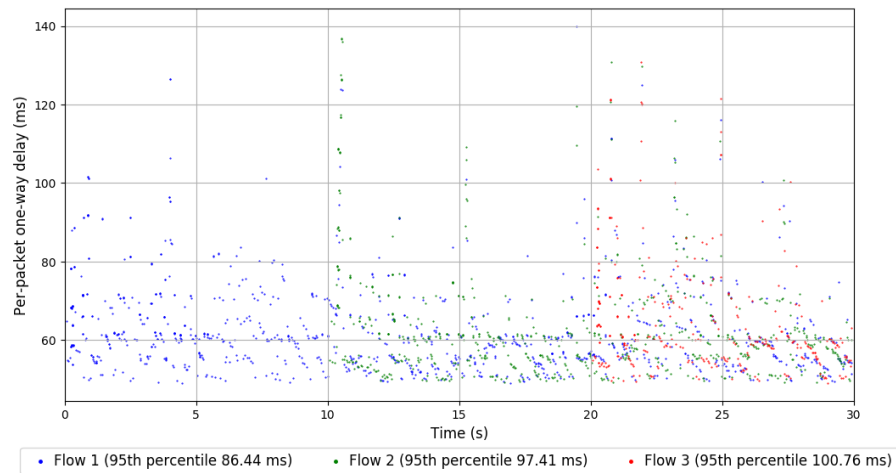
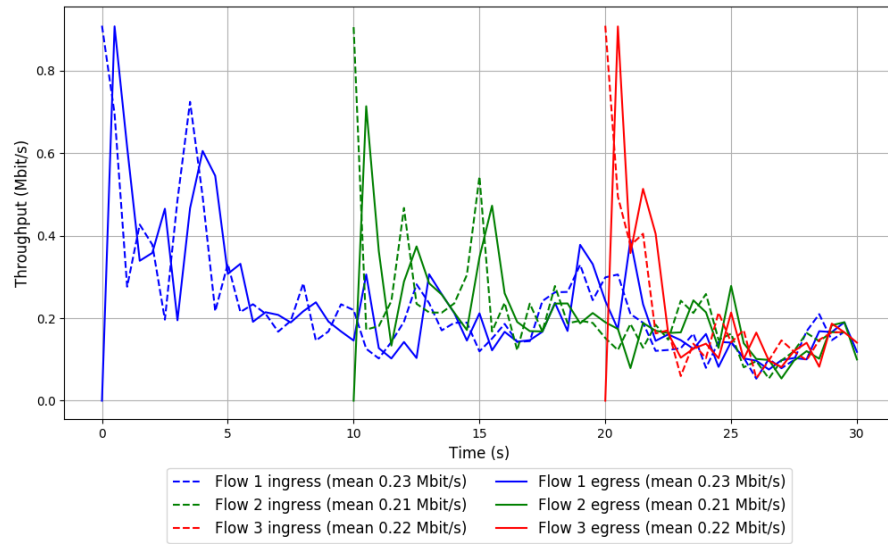


Run 1: Statistics of Sprout

Start at: 2018-07-24 12:54:43  
End at: 2018-07-24 12:55:13  
Local clock offset: 1.9 ms  
Remote clock offset: -10.906 ms

# Below is generated by plot.py at 2018-07-24 13:50:20  
# Datalink statistics  
-- Total of 3 flows:  
Average throughput: 0.45 Mbit/s  
95th percentile per-packet one-way delay: 91.245 ms  
Loss rate: 0.54%  
-- Flow 1:  
Average throughput: 0.23 Mbit/s  
95th percentile per-packet one-way delay: 86.436 ms  
Loss rate: 0.36%  
-- Flow 2:  
Average throughput: 0.21 Mbit/s  
95th percentile per-packet one-way delay: 97.413 ms  
Loss rate: 0.79%  
-- Flow 3:  
Average throughput: 0.22 Mbit/s  
95th percentile per-packet one-way delay: 100.762 ms  
Loss rate: 0.63%

## Run 1: Report of Sprout — Data Link



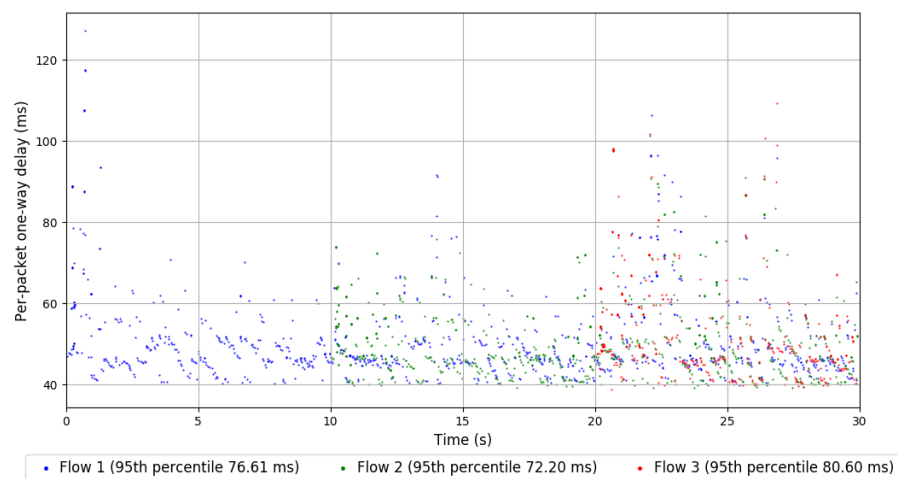
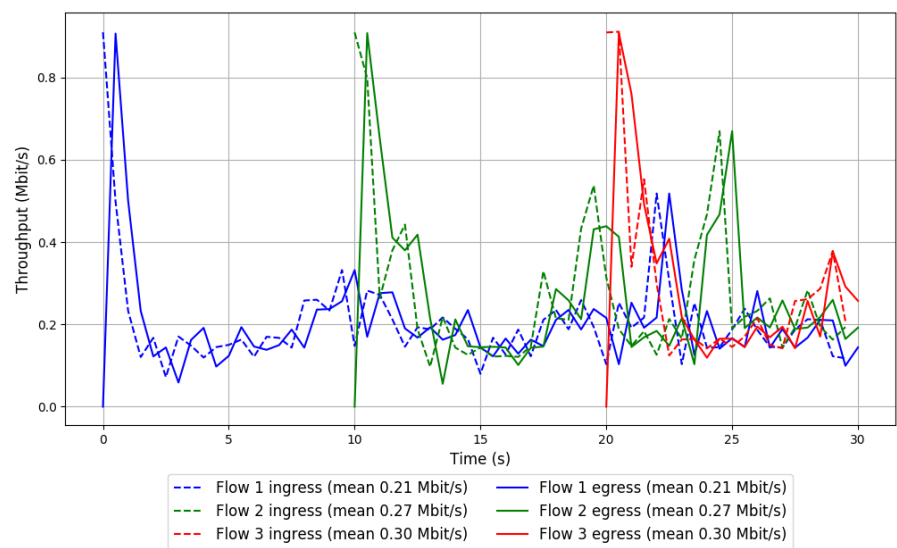
## Run 2: Statistics of Sprout

Start at: 2018-07-24 13:13:33  
End at: 2018-07-24 13:14:03  
Local clock offset: 3.157 ms  
Remote clock offset: -15.758 ms

```
# Below is generated by plot.py at 2018-07-24 13:50:20
# Datalink statistics
-- Total of 3 flows:
Average throughput: 0.49 Mbit/s
95th percentile per-packet one-way delay: 76.312 ms
Loss rate: 0.21%
-- Flow 1:
Average throughput: 0.21 Mbit/s
95th percentile per-packet one-way delay: 76.615 ms
Loss rate: 0.16%
-- Flow 2:
Average throughput: 0.27 Mbit/s
95th percentile per-packet one-way delay: 72.204 ms
Loss rate: 0.01%
-- Flow 3:
Average throughput: 0.30 Mbit/s
95th percentile per-packet one-way delay: 80.602 ms
Loss rate: 0.65%
```



Run 2: Report of Sprout — Data Link

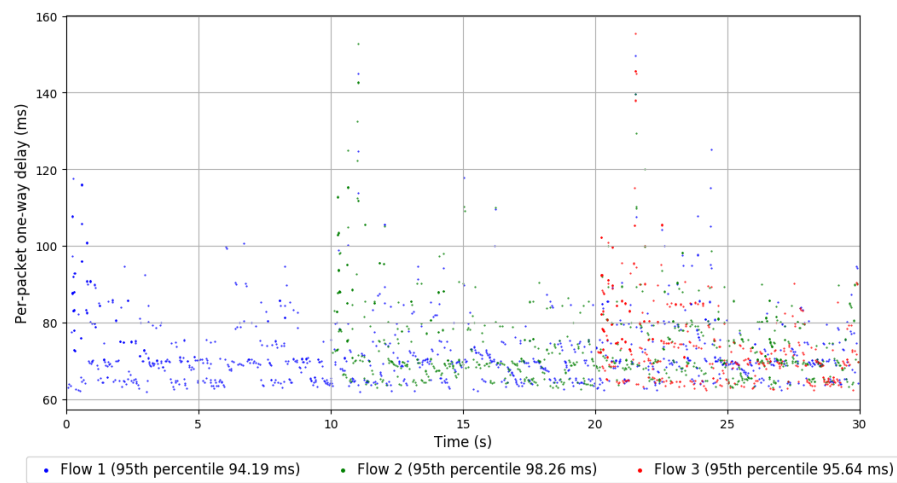
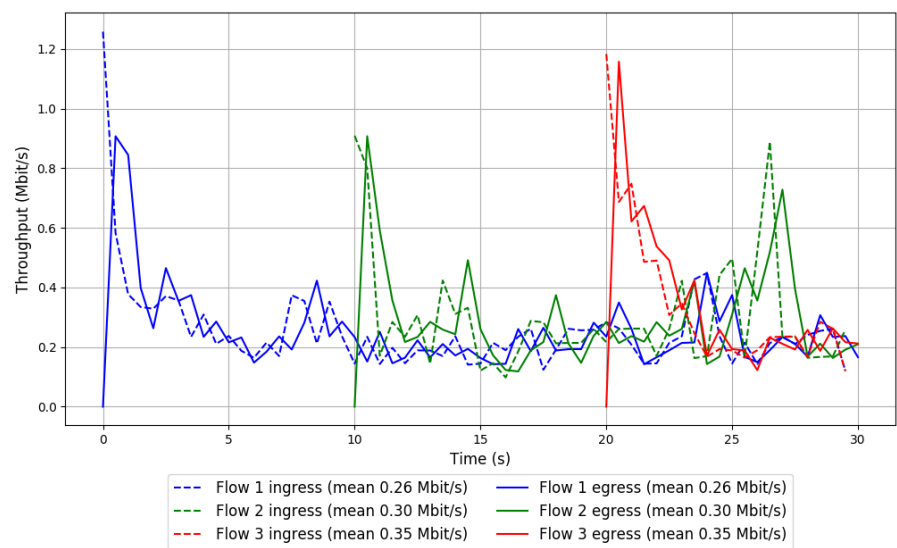


### Run 3: Statistics of Sprout

Start at: 2018-07-24 13:32:27  
End at: 2018-07-24 13:32:57  
Local clock offset: 0.963 ms  
Remote clock offset: 7.25 ms

```
# Below is generated by plot.py at 2018-07-24 13:50:20
# Datalink statistics
-- Total of 3 flows:
Average throughput: 0.57 Mbit/s
95th percentile per-packet one-way delay: 95.643 ms
Loss rate: 0.15%
-- Flow 1:
Average throughput: 0.26 Mbit/s
95th percentile per-packet one-way delay: 94.189 ms
Loss rate: 0.00%
-- Flow 2:
Average throughput: 0.30 Mbit/s
95th percentile per-packet one-way delay: 98.263 ms
Loss rate: 0.43%
-- Flow 3:
Average throughput: 0.35 Mbit/s
95th percentile per-packet one-way delay: 95.643 ms
Loss rate: 0.00%
```

Run 3: Report of Sprout — Data Link

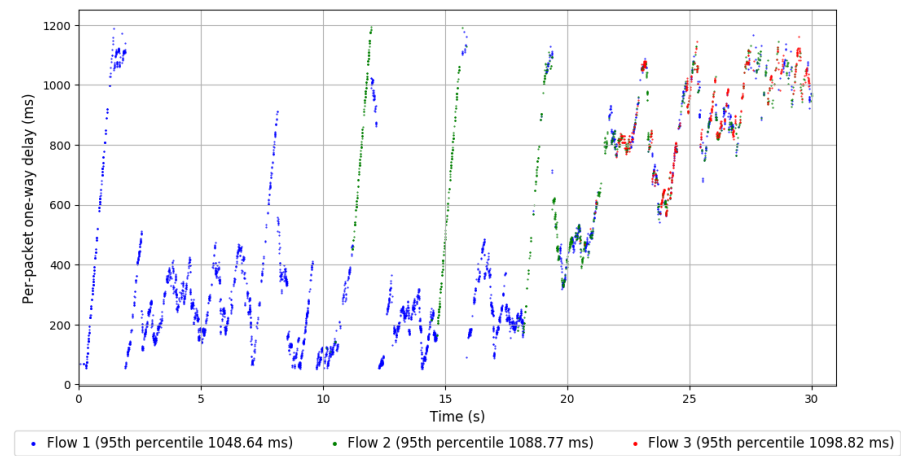
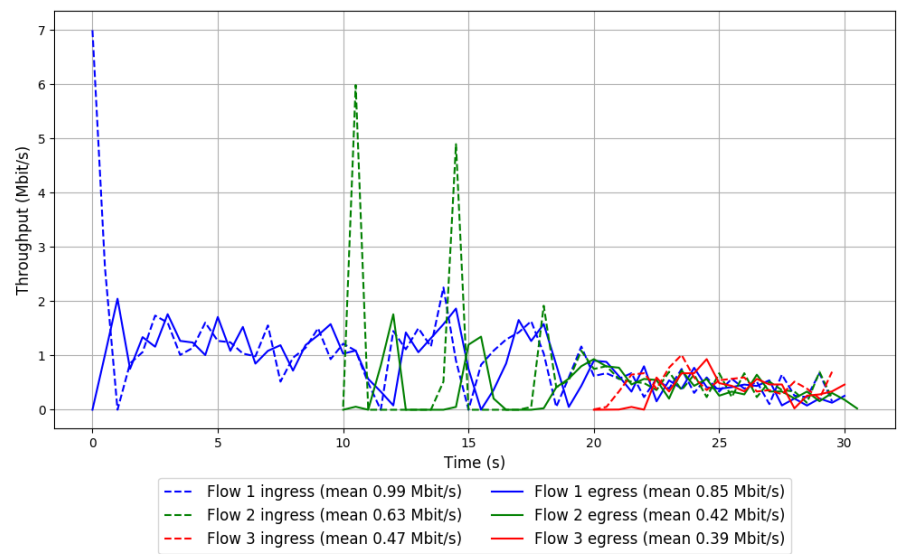


Run 1: Statistics of TaoVA-100x

Start at: 2018-07-24 12:59:09  
End at: 2018-07-24 12:59:39  
Local clock offset: 0.717 ms  
Remote clock offset: -10.662 ms

# Below is generated by plot.py at 2018-07-24 13:50:20  
# Datalink statistics  
-- Total of 3 flows:  
Average throughput: 1.26 Mbit/s  
95th percentile per-packet one-way delay: 1071.058 ms  
Loss rate: 19.76%  
-- Flow 1:  
Average throughput: 0.85 Mbit/s  
95th percentile per-packet one-way delay: 1048.644 ms  
Loss rate: 13.95%  
-- Flow 2:  
Average throughput: 0.42 Mbit/s  
95th percentile per-packet one-way delay: 1088.767 ms  
Loss rate: 33.17%  
-- Flow 3:  
Average throughput: 0.39 Mbit/s  
95th percentile per-packet one-way delay: 1098.816 ms  
Loss rate: 20.83%

Run 1: Report of TaoVA-100x — Data Link



Run 2: Statistics of TaoVA-100x

Start at: 2018-07-24 13:17:58

End at: 2018-07-24 13:18:28

Local clock offset: 2.789 ms

Remote clock offset: 6.597 ms

# Below is generated by plot.py at 2018-07-24 13:50:24

# Datalink statistics

-- Total of 3 flows:

Average throughput: 2.34 Mbit/s

95th percentile per-packet one-way delay: 1038.609 ms

Loss rate: 8.65%

-- Flow 1:

Average throughput: 1.62 Mbit/s

95th percentile per-packet one-way delay: 703.482 ms

Loss rate: 2.58%

-- Flow 2:

Average throughput: 0.88 Mbit/s

95th percentile per-packet one-way delay: 1063.200 ms

Loss rate: 14.04%

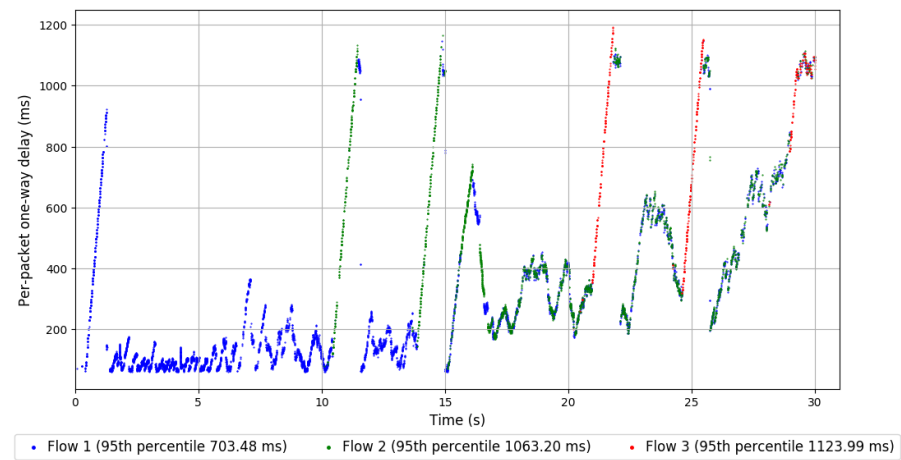
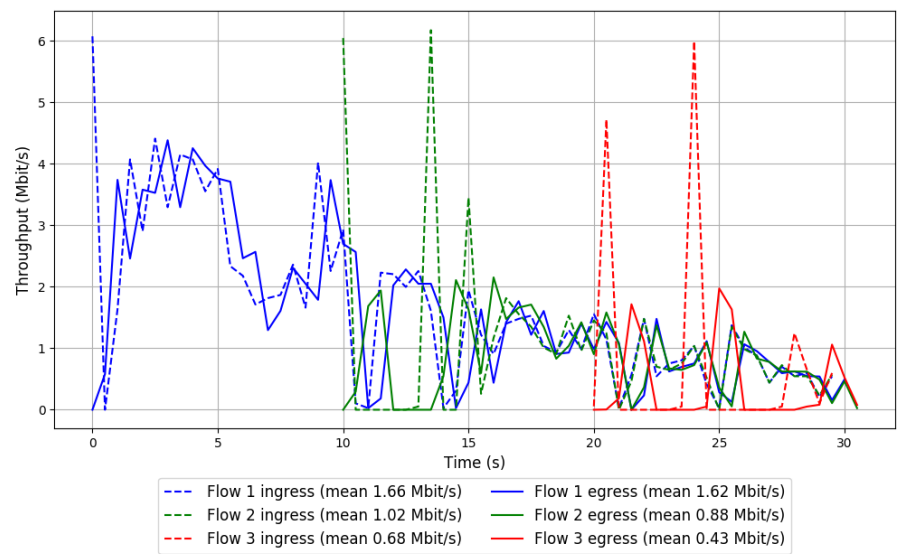
-- Flow 3:

Average throughput: 0.43 Mbit/s

95th percentile per-packet one-way delay: 1123.989 ms

Loss rate: 37.09%

Run 2: Report of TaoVA-100x — Data Link



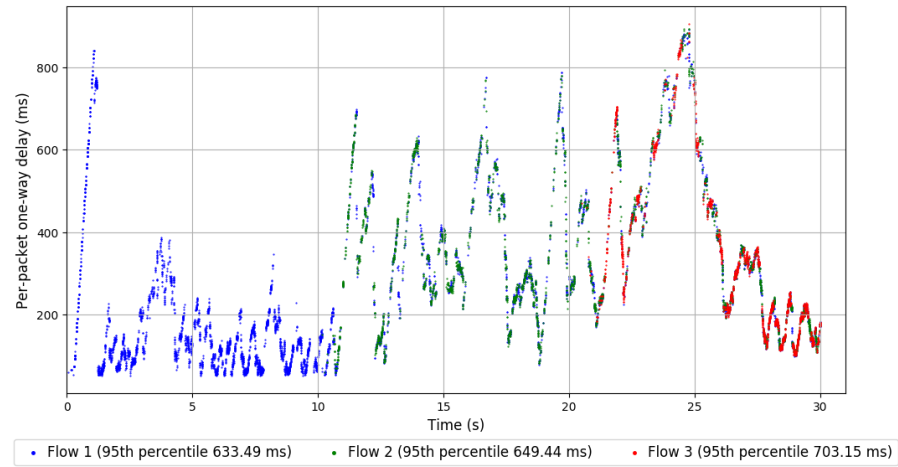
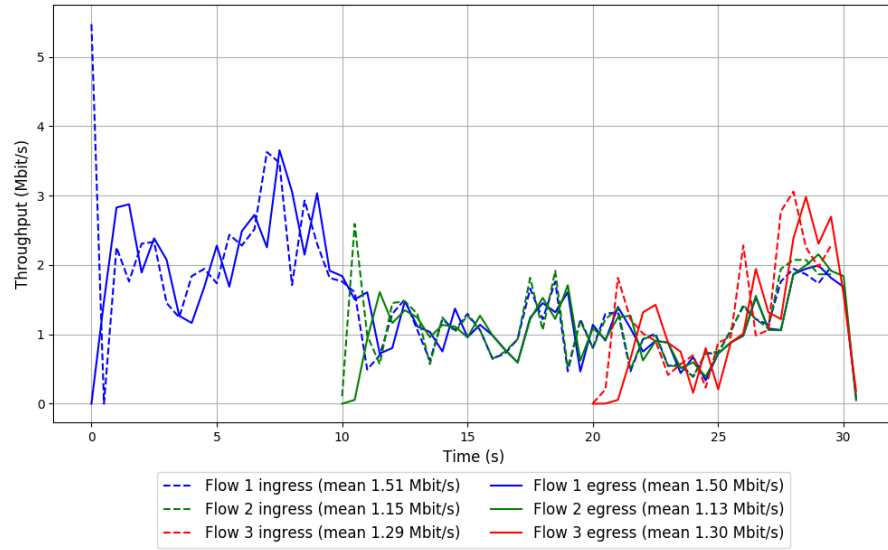
Run 3: Statistics of TaoVA-100x

Start at: 2018-07-24 13:36:56  
End at: 2018-07-24 13:37:26  
Local clock offset: 0.436 ms  
Remote clock offset: -3.899 ms

# Below is generated by plot.py at 2018-07-24 13:50:26  
# Datalink statistics  
-- Total of 3 flows:  
Average throughput: 2.66 Mbit/s  
95th percentile per-packet one-way delay: 659.331 ms  
Loss rate: 1.56%  
-- Flow 1:  
Average throughput: 1.50 Mbit/s  
95th percentile per-packet one-way delay: 633.491 ms  
Loss rate: 0.88%  
-- Flow 2:  
Average throughput: 1.13 Mbit/s  
95th percentile per-packet one-way delay: 649.437 ms  
Loss rate: 1.92%  
-- Flow 3:  
Average throughput: 1.30 Mbit/s  
95th percentile per-packet one-way delay: 703.146 ms  
Loss rate: 3.30%



### Run 3: Report of TaoVA-100x — Data Link

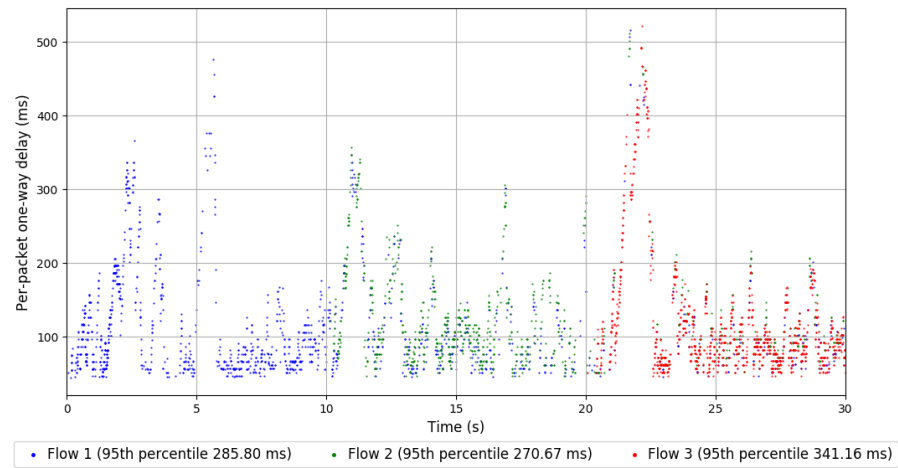
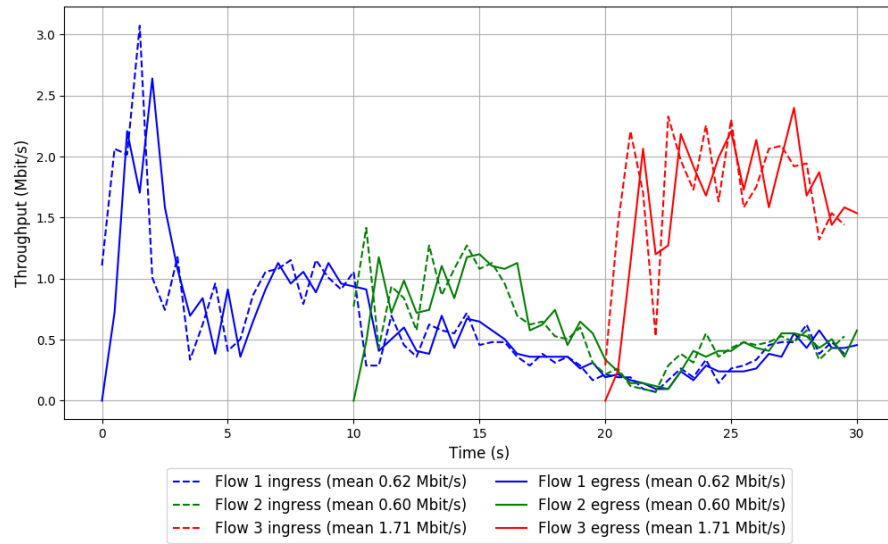


Run 1: Statistics of TCP Vegas

Start at: 2018-07-24 13:02:28  
End at: 2018-07-24 13:02:58  
Local clock offset: 2.391 ms  
Remote clock offset: -19.557 ms

# Below is generated by plot.py at 2018-07-24 13:50:26  
# Datalink statistics  
-- Total of 3 flows:  
Average throughput: 1.58 Mbit/s  
95th percentile per-packet one-way delay: 291.371 ms  
Loss rate: 0.53%  
-- Flow 1:  
Average throughput: 0.62 Mbit/s  
95th percentile per-packet one-way delay: 285.804 ms  
Loss rate: 0.45%  
-- Flow 2:  
Average throughput: 0.60 Mbit/s  
95th percentile per-packet one-way delay: 270.669 ms  
Loss rate: 0.60%  
-- Flow 3:  
Average throughput: 1.71 Mbit/s  
95th percentile per-packet one-way delay: 341.158 ms  
Loss rate: 0.56%

# Run 1: Report of TCP Vegas — Data Link



Run 2: Statistics of TCP Vegas

Start at: 2018-07-24 13:21:17

End at: 2018-07-24 13:21:47

Local clock offset: 2.568 ms

Remote clock offset: 5.951 ms

# Below is generated by plot.py at 2018-07-24 13:50:26

# Datalink statistics

-- Total of 3 flows:

Average throughput: 0.79 Mbit/s

95th percentile per-packet one-way delay: 349.166 ms

Loss rate: 1.46%

-- Flow 1:

Average throughput: 0.36 Mbit/s

95th percentile per-packet one-way delay: 400.543 ms

Loss rate: 1.44%

-- Flow 2:

Average throughput: 0.45 Mbit/s

95th percentile per-packet one-way delay: 280.252 ms

Loss rate: 0.94%

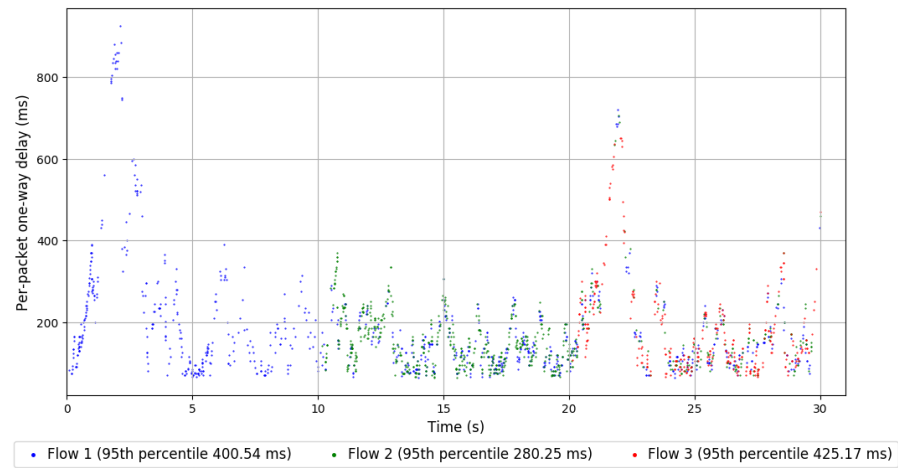
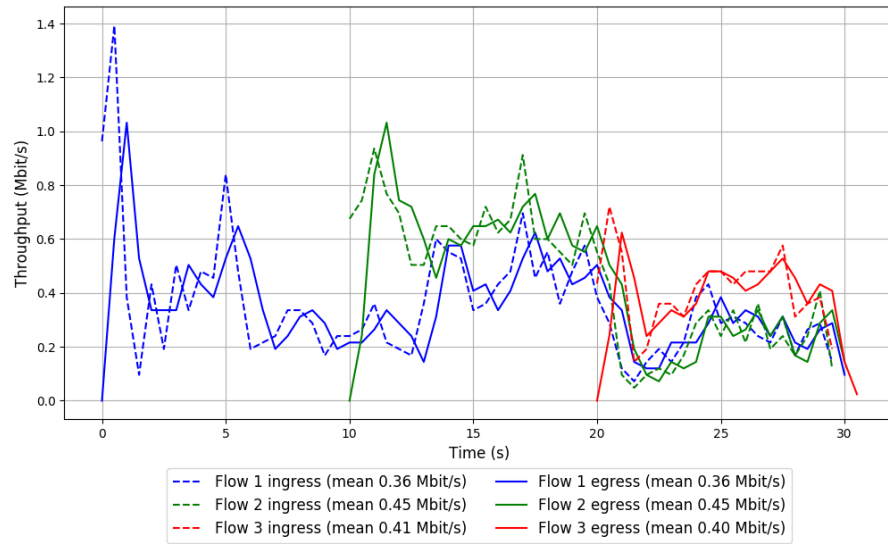
-- Flow 3:

Average throughput: 0.40 Mbit/s

95th percentile per-packet one-way delay: 425.166 ms

Loss rate: 2.65%

## Run 2: Report of TCP Vegas — Data Link



Run 3: Statistics of TCP Vegas

Start at: 2018-07-24 13:40:19

End at: 2018-07-24 13:40:49

Local clock offset: 2.491 ms

Remote clock offset: 4.717 ms

# Below is generated by plot.py at 2018-07-24 13:50:26

# Datalink statistics

-- Total of 3 flows:

Average throughput: 2.41 Mbit/s

95th percentile per-packet one-way delay: 263.197 ms

Loss rate: 0.27%

-- Flow 1:

Average throughput: 1.16 Mbit/s

95th percentile per-packet one-way delay: 242.843 ms

Loss rate: 0.17%

-- Flow 2:

Average throughput: 1.27 Mbit/s

95th percentile per-packet one-way delay: 280.329 ms

Loss rate: 0.33%

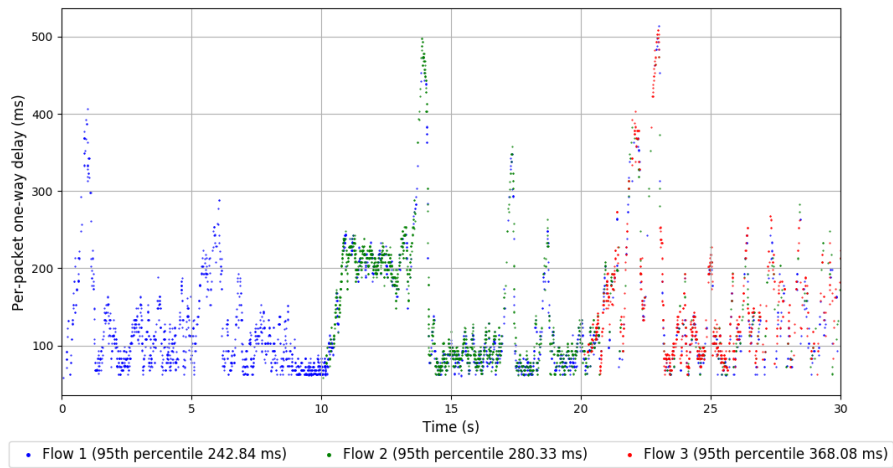
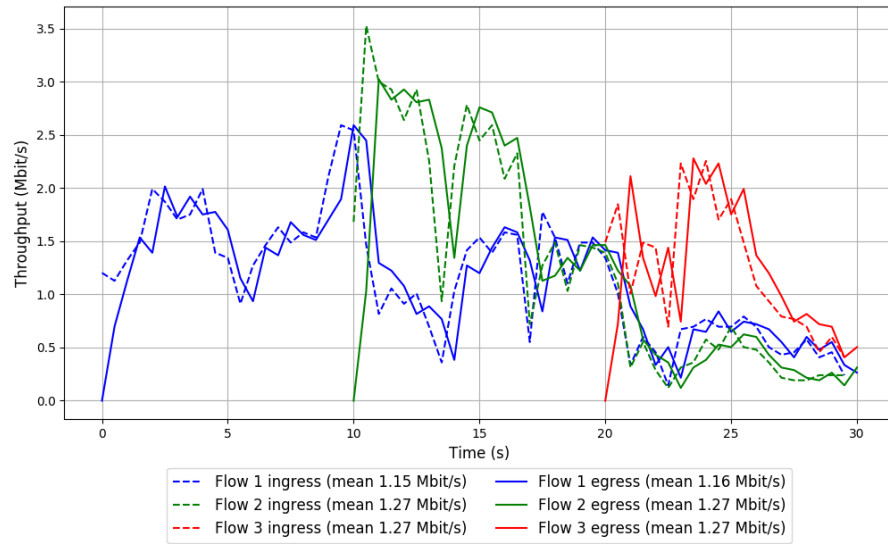
-- Flow 3:

Average throughput: 1.27 Mbit/s

95th percentile per-packet one-way delay: 368.085 ms

Loss rate: 0.38%

### Run 3: Report of TCP Vegas — Data Link



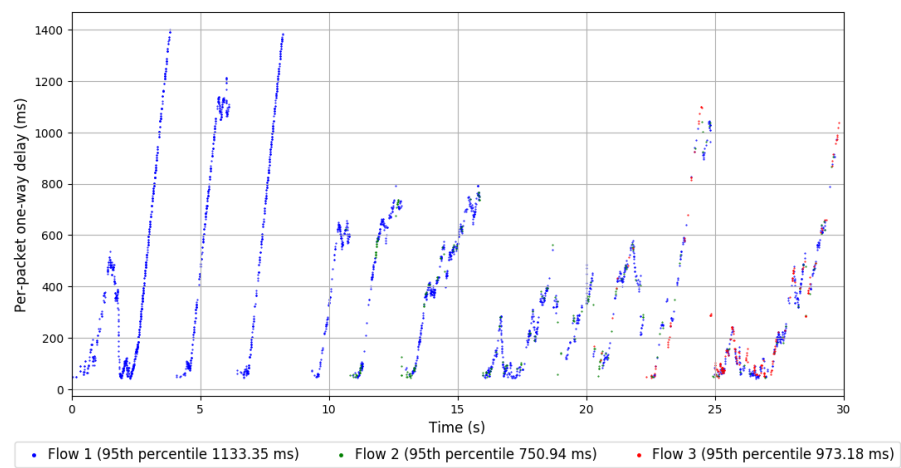
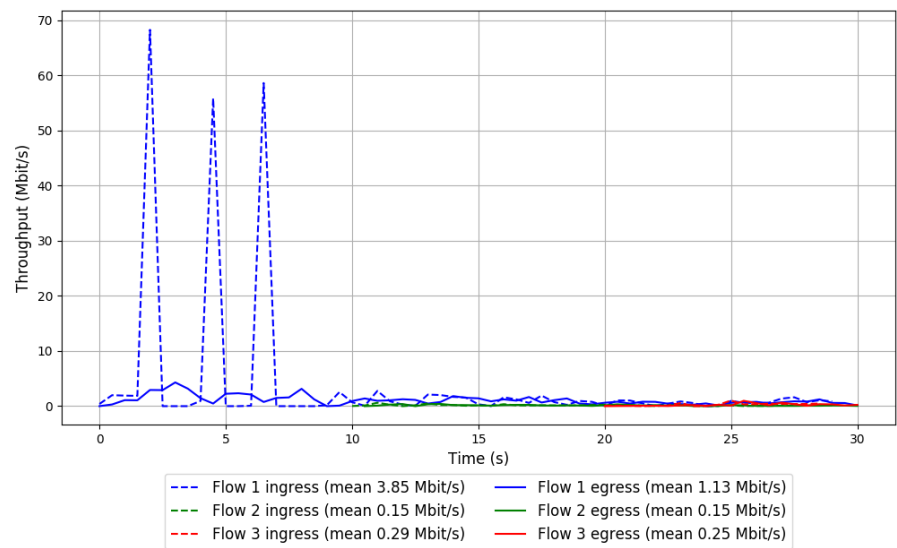
Run 1: Statistics of Verus

Start at: 2018-07-24 13:00:15  
End at: 2018-07-24 13:00:45  
Local clock offset: 0.85 ms  
Remote clock offset: -20.815 ms

# Below is generated by plot.py at 2018-07-24 13:50:26  
# Datalink statistics  
-- Total of 3 flows:  
Average throughput: 1.30 Mbit/s  
95th percentile per-packet one-way delay: 1119.837 ms  
Loss rate: 67.46%  
-- Flow 1:  
Average throughput: 1.13 Mbit/s  
95th percentile per-packet one-way delay: 1133.346 ms  
Loss rate: 70.46%  
-- Flow 2:  
Average throughput: 0.15 Mbit/s  
95th percentile per-packet one-way delay: 750.940 ms  
Loss rate: 5.98%  
-- Flow 3:  
Average throughput: 0.25 Mbit/s  
95th percentile per-packet one-way delay: 973.177 ms  
Loss rate: 5.63%



Run 1: Report of Verus — Data Link



Run 2: Statistics of Verus

Start at: 2018-07-24 13:19:04

End at: 2018-07-24 13:19:34

Local clock offset: 0.883 ms

Remote clock offset: 0.521 ms

# Below is generated by plot.py at 2018-07-24 13:50:26

# Datalink statistics

-- Total of 3 flows:

Average throughput: 1.27 Mbit/s

95th percentile per-packet one-way delay: 1010.434 ms

Loss rate: 6.98%

-- Flow 1:

Average throughput: 0.82 Mbit/s

95th percentile per-packet one-way delay: 894.084 ms

Loss rate: 6.60%

-- Flow 2:

Average throughput: 0.31 Mbit/s

95th percentile per-packet one-way delay: 1011.972 ms

Loss rate: 7.43%

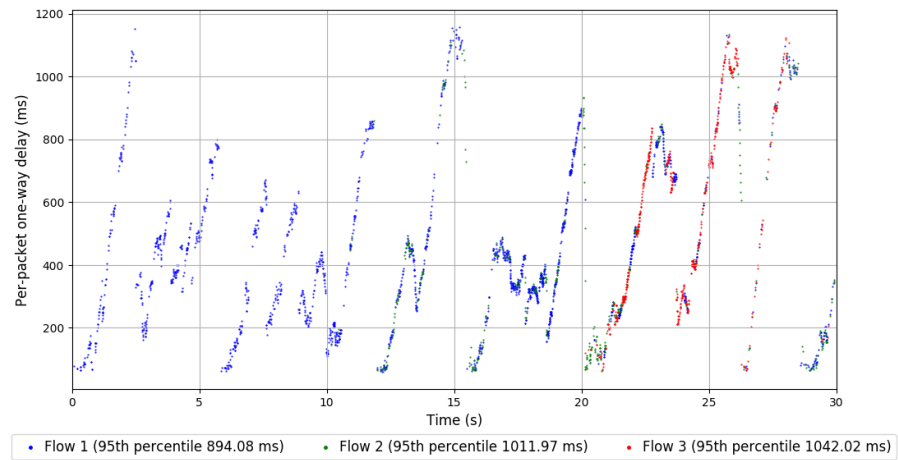
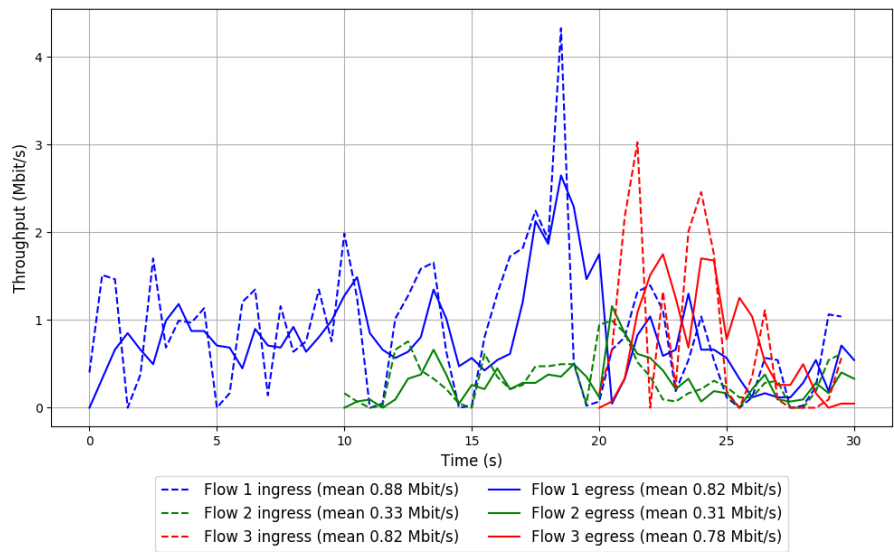
-- Flow 3:

Average throughput: 0.78 Mbit/s

95th percentile per-packet one-way delay: 1042.019 ms

Loss rate: 7.87%

Run 2: Report of Verus — Data Link



Run 3: Statistics of Verus

Start at: 2018-07-24 13:38:02

End at: 2018-07-24 13:38:32

Local clock offset: 0.757 ms

Remote clock offset: 1.889 ms

# Below is generated by plot.py at 2018-07-24 13:50:29

# Datalink statistics

-- Total of 3 flows:

Average throughput: 3.95 Mbit/s

95th percentile per-packet one-way delay: 1037.955 ms

Loss rate: 5.87%

-- Flow 1:

Average throughput: 2.55 Mbit/s

95th percentile per-packet one-way delay: 955.754 ms

Loss rate: 3.33%

-- Flow 2:

Average throughput: 2.13 Mbit/s

95th percentile per-packet one-way delay: 1078.089 ms

Loss rate: 10.16%

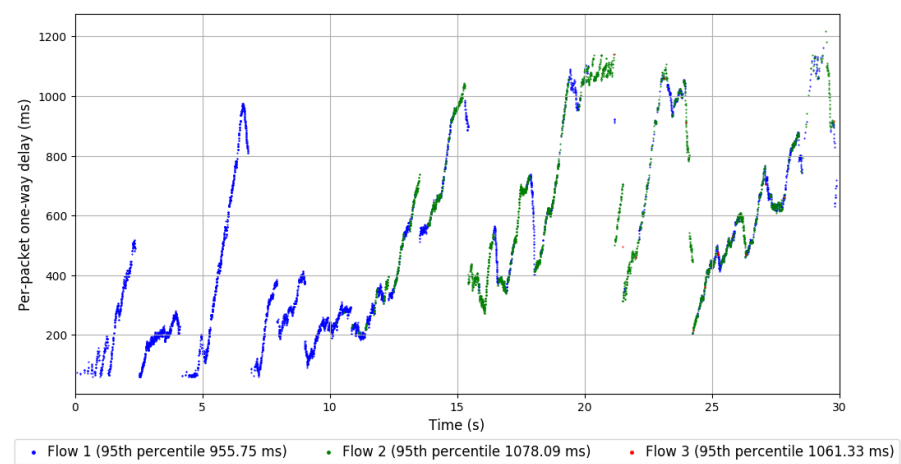
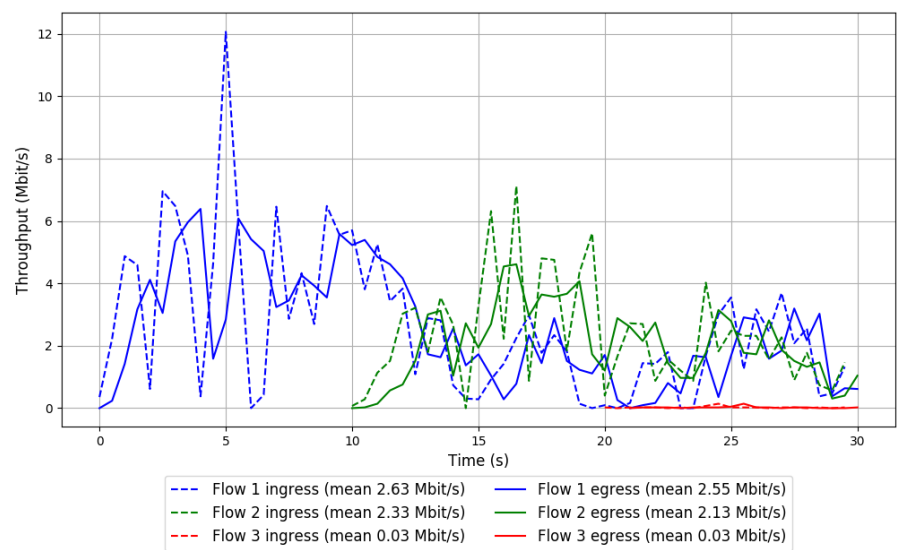
-- Flow 3:

Average throughput: 0.03 Mbit/s

95th percentile per-packet one-way delay: 1061.331 ms

Loss rate: 9.52%

Run 3: Report of Verus — Data Link

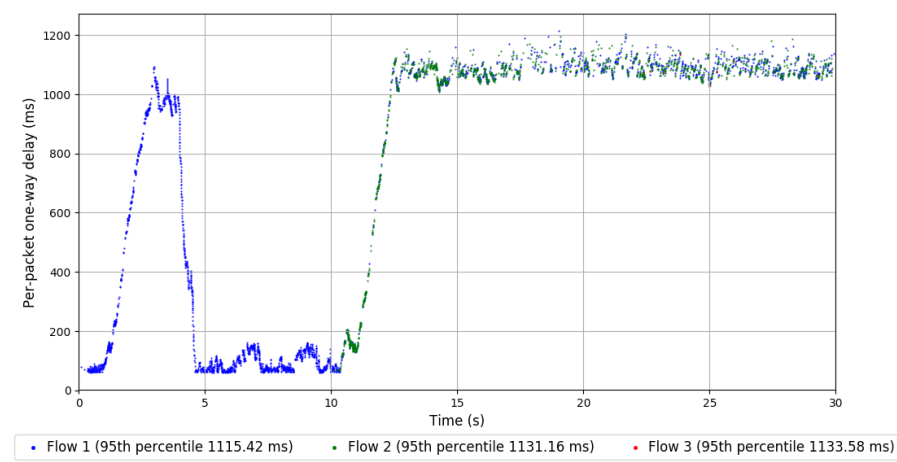
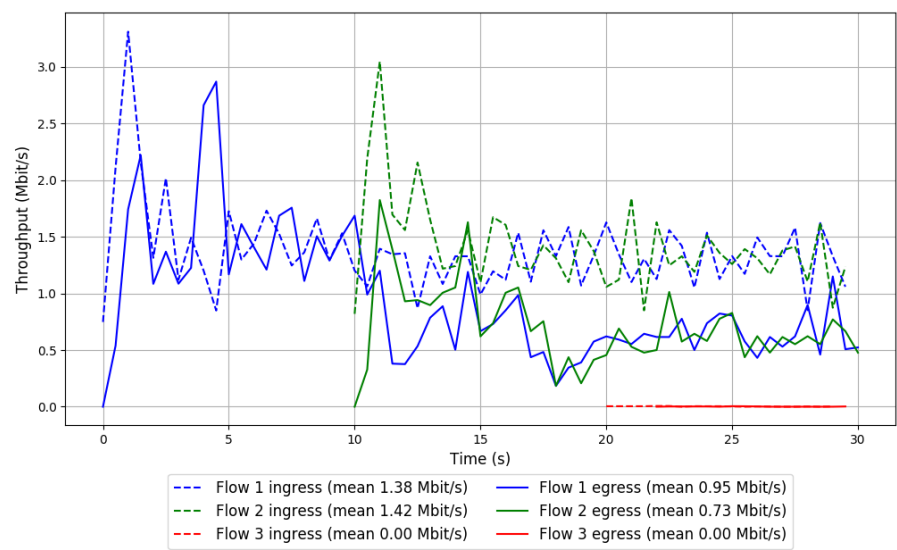


Run 1: Statistics of PCC-Vivace

Start at: 2018-07-24 13:06:53  
End at: 2018-07-24 13:07:23  
Local clock offset: 3.102 ms  
Remote clock offset: -2.623 ms

# Below is generated by plot.py at 2018-07-24 13:50:29  
# Datalink statistics  
-- Total of 3 flows:  
Average throughput: 1.44 Mbit/s  
95th percentile per-packet one-way delay: 1121.444 ms  
Loss rate: 38.39%  
-- Flow 1:  
Average throughput: 0.95 Mbit/s  
95th percentile per-packet one-way delay: 1115.419 ms  
Loss rate: 31.17%  
-- Flow 2:  
Average throughput: 0.73 Mbit/s  
95th percentile per-packet one-way delay: 1131.163 ms  
Loss rate: 48.91%  
-- Flow 3:  
Average throughput: 0.00 Mbit/s  
95th percentile per-packet one-way delay: 1133.583 ms  
Loss rate: 59.48%

Run 1: Report of PCC-Vivace — Data Link



Run 2: Statistics of PCC-Vivace

Start at: 2018-07-24 13:25:43

End at: 2018-07-24 13:26:13

Local clock offset: 2.016 ms

Remote clock offset: 4.646 ms

# Below is generated by plot.py at 2018-07-24 13:50:29

# Datalink statistics

-- Total of 3 flows:

Average throughput: 2.32 Mbit/s

95th percentile per-packet one-way delay: 1100.158 ms

Loss rate: 23.21%

-- Flow 1:

Average throughput: 1.29 Mbit/s

95th percentile per-packet one-way delay: 1092.640 ms

Loss rate: 16.04%

-- Flow 2:

Average throughput: 1.10 Mbit/s

95th percentile per-packet one-way delay: 1106.240 ms

Loss rate: 28.03%

-- Flow 3:

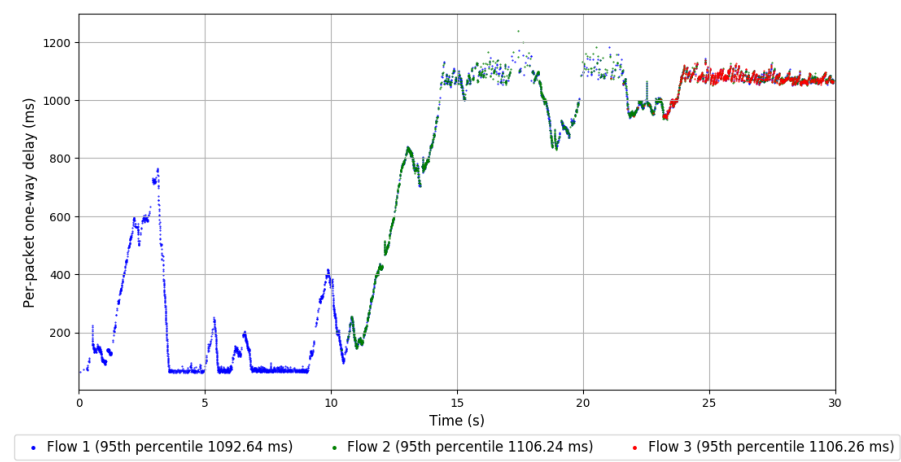
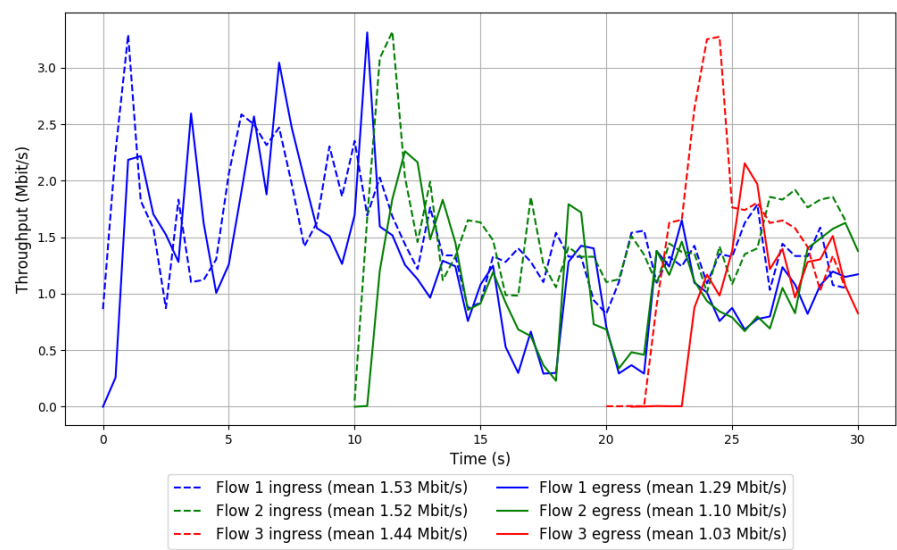
Average throughput: 1.03 Mbit/s

95th percentile per-packet one-way delay: 1106.260 ms

Loss rate: 36.09%



Run 2: Report of PCC-Vivace — Data Link



Run 3: Statistics of PCC-Vivace

Start at: 2018-07-24 13:44:44

End at: 2018-07-24 13:45:14

Local clock offset: 1.017 ms

Remote clock offset: 7.131 ms

# Below is generated by plot.py at 2018-07-24 13:50:29

# Datalink statistics

-- Total of 3 flows:

Average throughput: 2.10 Mbit/s

95th percentile per-packet one-way delay: 1104.451 ms

Loss rate: 27.54%

-- Flow 1:

Average throughput: 1.27 Mbit/s

95th percentile per-packet one-way delay: 1097.791 ms

Loss rate: 20.33%

-- Flow 2:

Average throughput: 1.00 Mbit/s

95th percentile per-packet one-way delay: 1104.991 ms

Loss rate: 27.98%

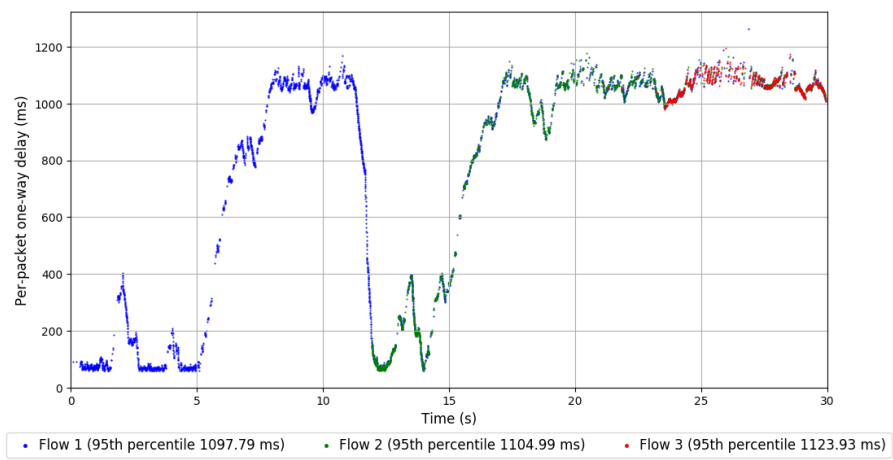
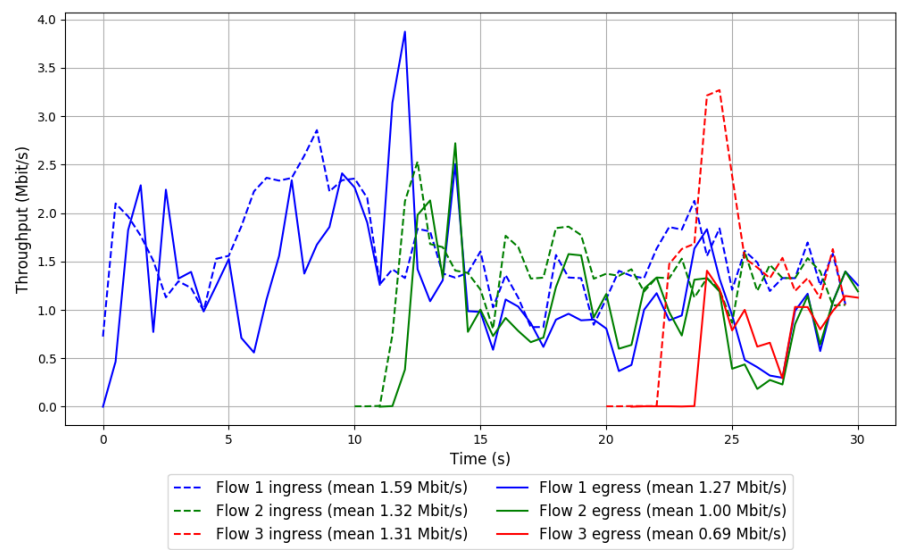
-- Flow 3:

Average throughput: 0.69 Mbit/s

95th percentile per-packet one-way delay: 1123.928 ms

Loss rate: 53.10%

Run 3: Report of PCC-Vivace — Data Link

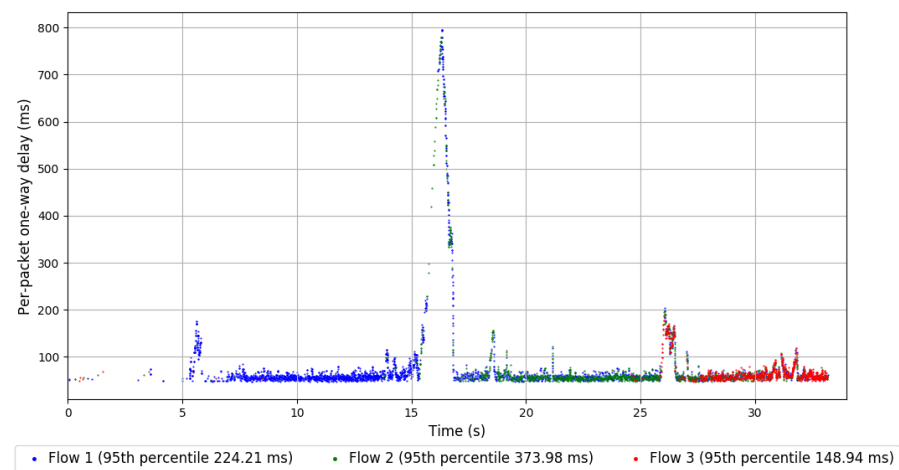
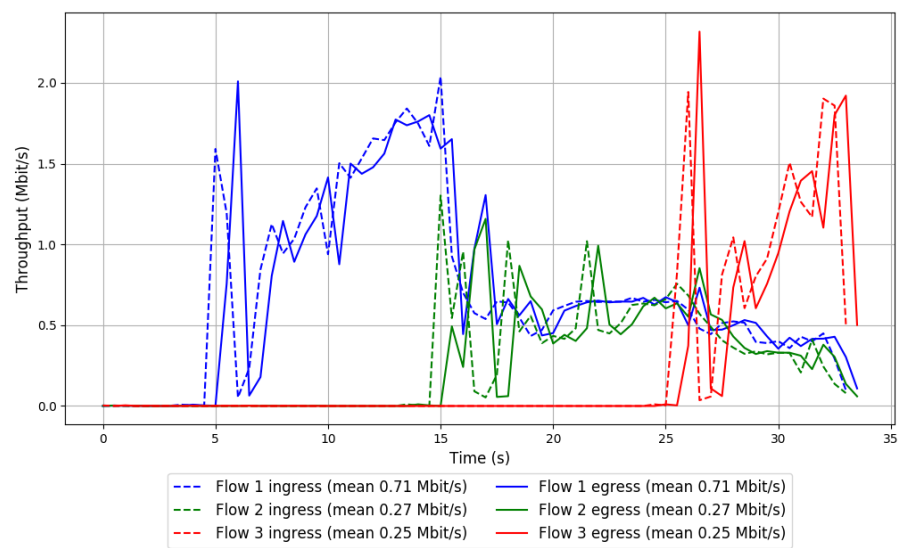


Run 1: Statistics of WebRTC media

Start at: 2018-07-24 12:55:49  
End at: 2018-07-24 12:56:19  
Local clock offset: 0.776 ms  
Remote clock offset: -15.263 ms

# Below is generated by plot.py at 2018-07-24 13:50:29  
# Datalink statistics  
-- Total of 3 flows:  
Average throughput: 1.22 Mbit/s  
95th percentile per-packet one-way delay: 203.244 ms  
Loss rate: 0.30%  
-- Flow 1:  
Average throughput: 0.71 Mbit/s  
95th percentile per-packet one-way delay: 224.214 ms  
Loss rate: 0.13%  
-- Flow 2:  
Average throughput: 0.27 Mbit/s  
95th percentile per-packet one-way delay: 373.980 ms  
Loss rate: 0.25%  
-- Flow 3:  
Average throughput: 0.25 Mbit/s  
95th percentile per-packet one-way delay: 148.941 ms  
Loss rate: 0.86%

Run 1: Report of WebRTC media — Data Link

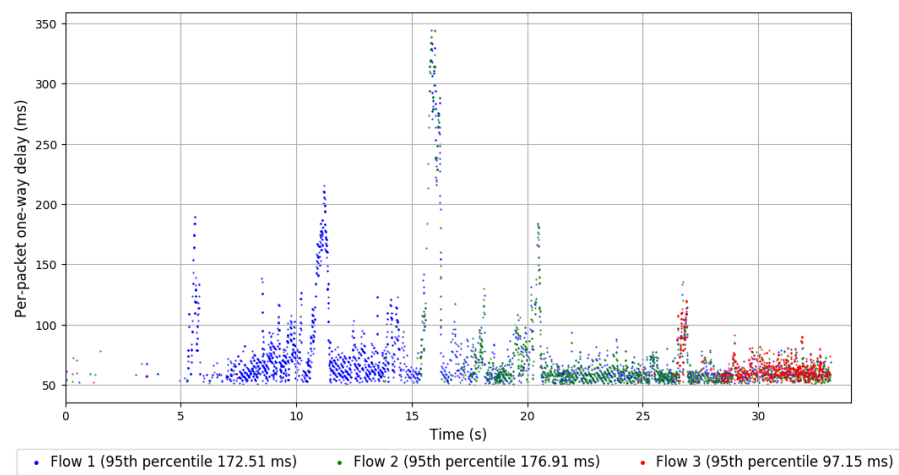
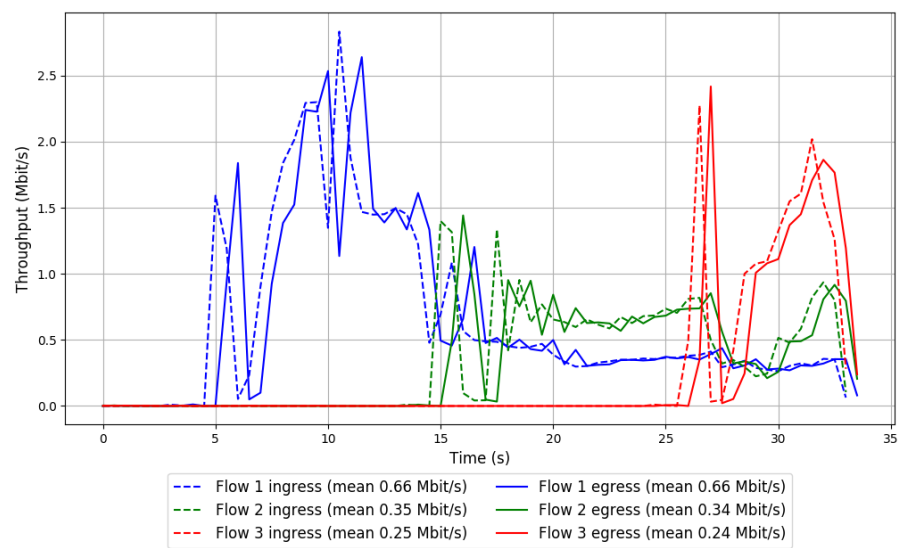


Run 2: Statistics of WebRTC media

Start at: 2018-07-24 13:14:39  
End at: 2018-07-24 13:15:09  
Local clock offset: 2.352 ms  
Remote clock offset: -4.962 ms

# Below is generated by plot.py at 2018-07-24 13:50:29  
# Datalink statistics  
-- Total of 3 flows:  
Average throughput: 1.24 Mbit/s  
95th percentile per-packet one-way delay: 161.840 ms  
Loss rate: 0.28%  
-- Flow 1:  
Average throughput: 0.66 Mbit/s  
95th percentile per-packet one-way delay: 172.508 ms  
Loss rate: 0.08%  
-- Flow 2:  
Average throughput: 0.34 Mbit/s  
95th percentile per-packet one-way delay: 176.905 ms  
Loss rate: 0.21%  
-- Flow 3:  
Average throughput: 0.24 Mbit/s  
95th percentile per-packet one-way delay: 97.151 ms  
Loss rate: 0.90%

Run 2: Report of WebRTC media — Data Link



Run 3: Statistics of WebRTC media

Start at: 2018-07-24 13:33:34

End at: 2018-07-24 13:34:04

Local clock offset: 2.059 ms

Remote clock offset: 4.235 ms

# Below is generated by plot.py at 2018-07-24 13:50:29

# Datalink statistics

-- Total of 3 flows:

Average throughput: 0.76 Mbit/s

95th percentile per-packet one-way delay: 341.993 ms

Loss rate: 0.38%

-- Flow 1:

Average throughput: 0.37 Mbit/s

95th percentile per-packet one-way delay: 396.550 ms

Loss rate: 0.48%

-- Flow 2:

Average throughput: 0.20 Mbit/s

95th percentile per-packet one-way delay: 371.991 ms

Loss rate: 0.39%

-- Flow 3:

Average throughput: 0.19 Mbit/s

95th percentile per-packet one-way delay: 160.533 ms

Loss rate: 0.17%



Run 3: Report of WebRTC media — Data Link

