

## Pantheon Report

Generated at 2018-06-19 08:32:22 (UTC).

Data path: India ppp0 ppp0 (*remote*) → AWS India 1 Ethernet (*local*).

Repeated the test of 16 congestion control schemes 3 times.

Each test lasted for 30 seconds running 3 flows with 10-second interval between two flows.

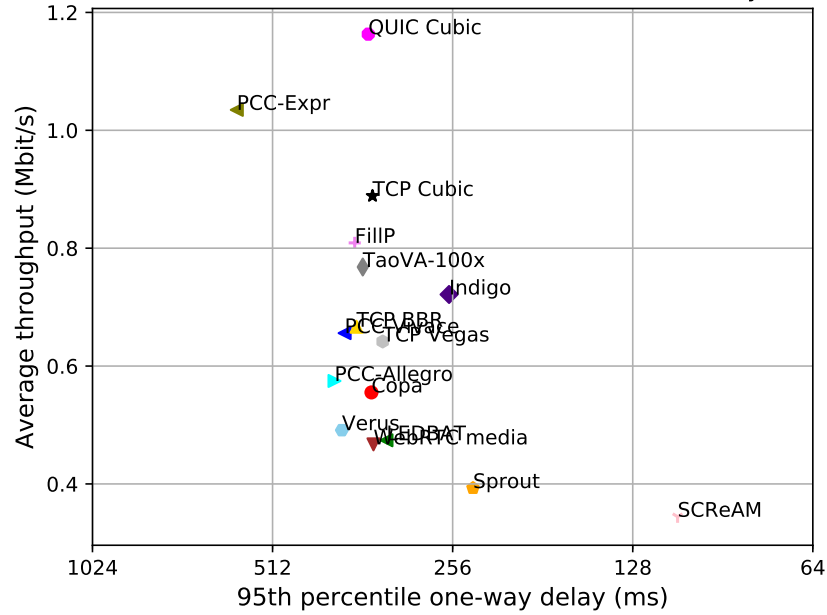
Increased UDP receive buffer to 16 MB (default) and 32 MB (max).

NTP offsets were measured against `nets.org.sg` and have been applied to correct the timestamps in logs.

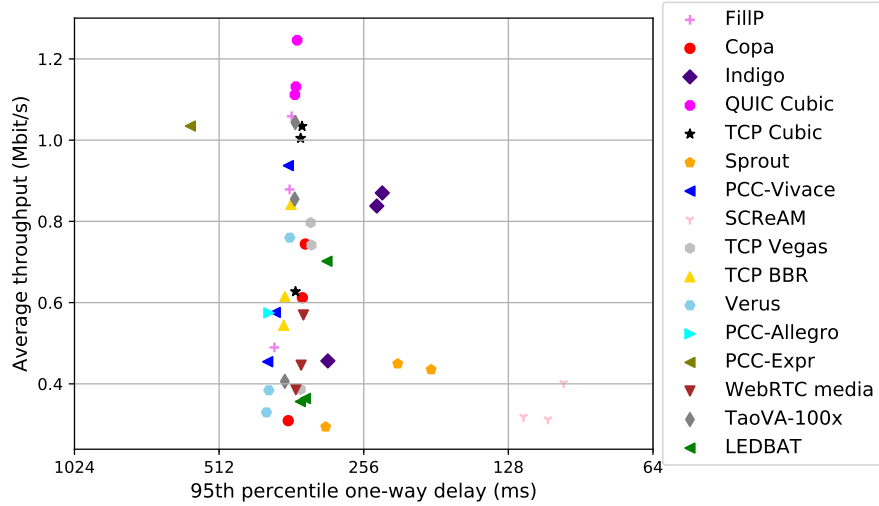
Git summary:

```
branch: master @ 9141c5f9450c85ea5ea2ea755a8e946998d3abf3
third_party/fillp @ d47f4fa1b454a5e3c0537115c5a28436dbd4b834
third_party/genericCC @ c7966e494a929986eaa5a9c169a7f381fe1bbbe5
third_party/indigo @ 2601c92e4aa9d58d38dc4dfe0ecdbf90c077e64d
third_party/libutp @ b3465b942e2826f2b179eaab4a906ce6bb7cf3cf
third_party/pantheon-tunnel @ 6f038ed31259d366f9840f65b82cbe8f464b1b39
third_party/pcc @ 1afc958fa0d66d18b623c091a55fec872b4981e1
M receiver/src/buffer.h
M receiver/src/core.cpp
M sender/src/buffer.h
M sender/src/core.cpp
third_party/pcc-experimental @ cd43e34e3f5f5613e8acd08fab92c4eb24f974ab
third_party/proto-quick @ 77961f1a82733a86b42f1bc8143ebc978f3cff42
third_party/scream-reproduce @ f099118d1421aa3131bf11ff1964974e1da3bdb2
M src/ScreamClient
M src/ScreamServer
third_party/sprout @ 366e35c6178b01e31d4a46ad18c74f9415f19a26
third_party/verus @ d4b447ea74c6c60a261149af2629562939f9a494
M src/verus.hpp
M tools/plot.py
third_party/vivace @ 2baf86211435ae071a32f96b7d8c504587f5d7f4
third_party/webrtc @ 3f0cc2a9061a41b6f9dde4735770d143a1fa2851
```

test from India ppp0 to AWS India 1, 3 runs of 30s each per scheme  
 3 flows with 10s interval between flows (mean of all runs by scheme)



test from India ppp0 to AWS India 1, 3 runs of 30s each per scheme  
 3 flows with 10s interval between flows



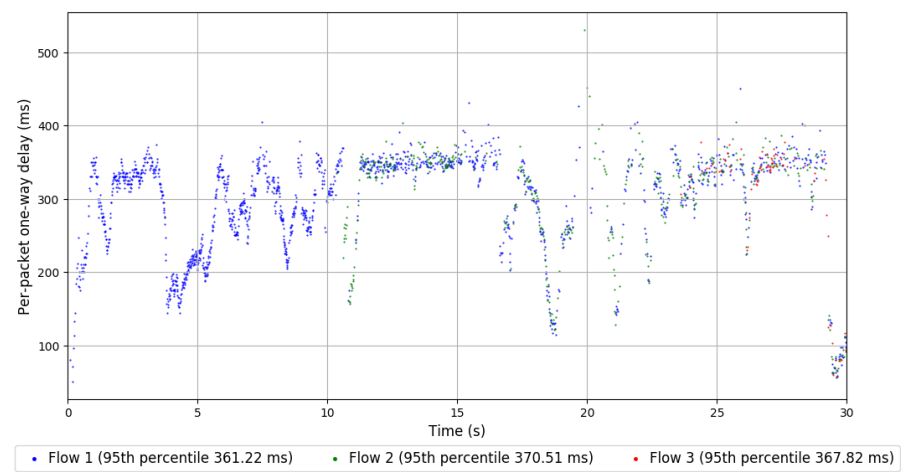
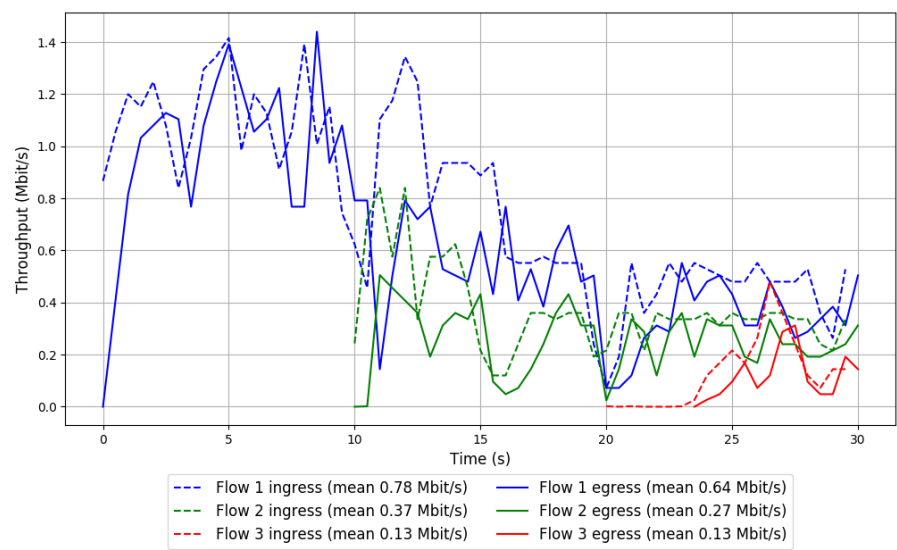
scheme	# runs	mean avg tput (Mbit/s)			mean 95th-%ile delay (ms)			mean loss rate (%)		
		flow 1	flow 2	flow 3	flow 1	flow 2	flow 3	flow 1	flow 2	flow 3
TCP BBR	3	0.45	0.27	0.18	369.28	372.54	374.45	18.85	30.07	36.97
Copa	3	0.30	0.27	0.24	350.18	350.16	352.58	12.57	11.53	14.75
TCP Cubic	3	0.56	0.36	0.32	348.25	351.48	346.24	6.31	8.02	10.98
FillP	3	0.49	0.34	0.32	375.54	369.78	367.59	52.65	56.04	54.75
Indigo	3	0.37	0.34	0.40	248.09	260.08	283.58	3.66	5.51	5.62
LEDBAT	3	0.27	0.23	0.16	327.03	328.93	340.28	2.18	1.90	4.64
PCC-Allegro	1	0.57	0.00	0.00	403.39	343.04	355.48	81.75	92.31	71.45
PCC-Expr	1	0.58	0.71	0.00	461.99	681.00	341.20	91.23	94.85	92.31
QUIC Cubic	3	0.69	0.53	0.39	353.08	354.82	355.53	13.87	15.69	26.03
SCReAM	3	0.15	0.19	0.21	107.12	110.06	109.96	0.21	0.30	0.64
Sprout	3	0.20	0.20	0.19	216.35	243.14	268.55	2.23	2.09	6.60
TaoVA-100x	3	0.49	0.23	0.50	360.92	368.69	364.13	46.03	67.91	50.88
TCP Vegas	3	0.36	0.31	0.24	320.07	334.97	348.36	3.28	5.66	9.94
Verus	3	0.36	0.17	0.07	394.03	396.21	384.39	41.68	77.27	57.46
PCC-Vivace	3	0.43	0.28	0.16	385.08	393.84	370.27	68.48	78.83	84.24
WebRTC media	3	0.20	0.16	0.11	346.17	350.41	344.84	10.52	14.25	15.31

Run 1: Statistics of TCP BBR

Start at: 2018-06-19 07:56:06  
End at: 2018-06-19 07:56:36  
Local clock offset: 3.318 ms  
Remote clock offset: -5.521 ms

# Below is generated by plot.py at 2018-06-19 08:31:50  
# Datalink statistics  
-- Total of 3 flows:  
Average throughput: 0.84 Mbit/s  
95th percentile per-packet one-way delay: 362.655 ms  
Loss rate: 21.20%  
-- Flow 1:  
Average throughput: 0.64 Mbit/s  
95th percentile per-packet one-way delay: 361.218 ms  
Loss rate: 17.72%  
-- Flow 2:  
Average throughput: 0.27 Mbit/s  
95th percentile per-packet one-way delay: 370.512 ms  
Loss rate: 29.88%  
-- Flow 3:  
Average throughput: 0.13 Mbit/s  
95th percentile per-packet one-way delay: 367.824 ms  
Loss rate: 34.33%

Run 1: Report of TCP BBR — Data Link

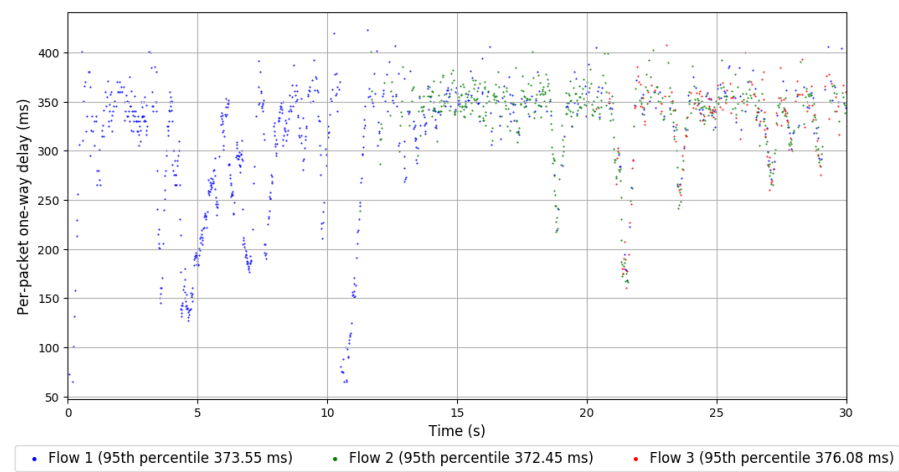
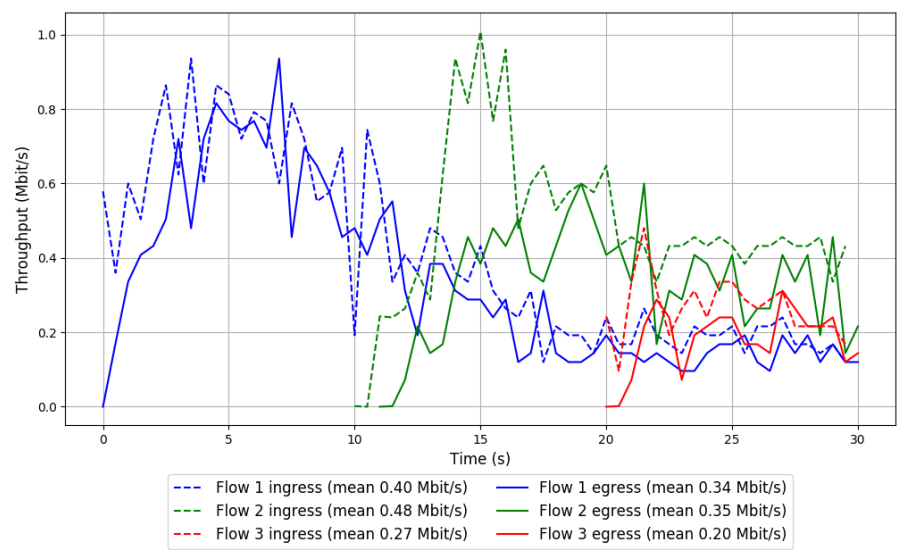


Run 2: Statistics of TCP BBR

Start at: 2018-06-19 08:13:42  
End at: 2018-06-19 08:14:12  
Local clock offset: 3.361 ms  
Remote clock offset: -2.196 ms

# Below is generated by plot.py at 2018-06-19 08:31:50  
# Datalink statistics  
-- Total of 3 flows:  
Average throughput: 0.61 Mbit/s  
95th percentile per-packet one-way delay: 373.553 ms  
Loss rate: 24.62%  
-- Flow 1:  
Average throughput: 0.34 Mbit/s  
95th percentile per-packet one-way delay: 373.553 ms  
Loss rate: 16.98%  
-- Flow 2:  
Average throughput: 0.35 Mbit/s  
95th percentile per-packet one-way delay: 372.453 ms  
Loss rate: 32.93%  
-- Flow 3:  
Average throughput: 0.20 Mbit/s  
95th percentile per-packet one-way delay: 376.082 ms  
Loss rate: 29.29%

Run 2: Report of TCP BBR — Data Link



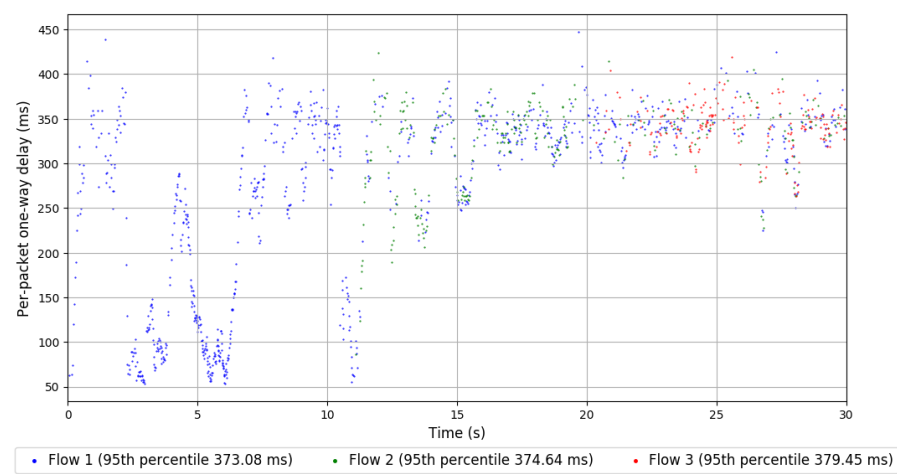
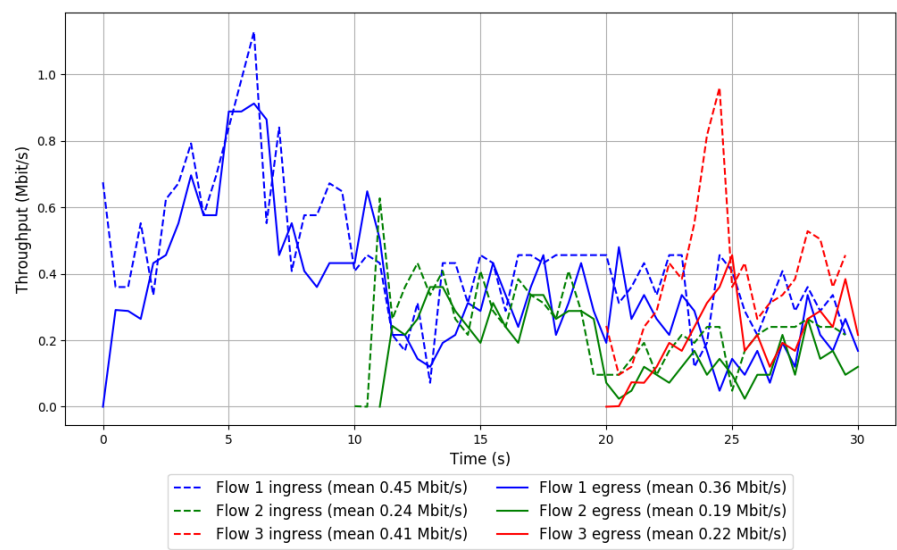
Run 3: Statistics of TCP BBR

Start at: 2018-06-19 08:31:11  
End at: 2018-06-19 08:31:41  
Local clock offset: -5.718 ms  
Remote clock offset: -2.612 ms

# Below is generated by plot.py at 2018-06-19 08:31:50  
# Datalink statistics  
-- Total of 3 flows:  
Average throughput: 0.54 Mbit/s  
95th percentile per-packet one-way delay: 375.645 ms  
Loss rate: 27.61%  
-- Flow 1:  
Average throughput: 0.36 Mbit/s  
95th percentile per-packet one-way delay: 373.080 ms  
Loss rate: 21.84%  
-- Flow 2:  
Average throughput: 0.19 Mbit/s  
95th percentile per-packet one-way delay: 374.645 ms  
Loss rate: 27.41%  
-- Flow 3:  
Average throughput: 0.22 Mbit/s  
95th percentile per-packet one-way delay: 379.455 ms  
Loss rate: 47.30%



Run 3: Report of TCP BBR — Data Link

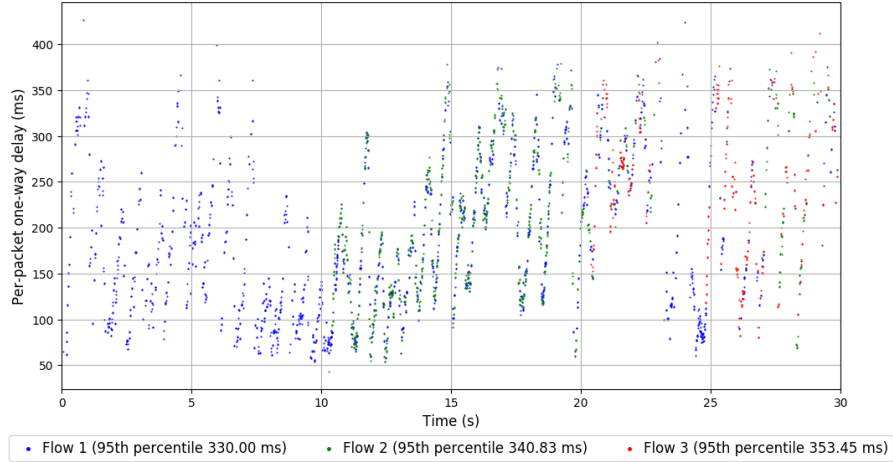
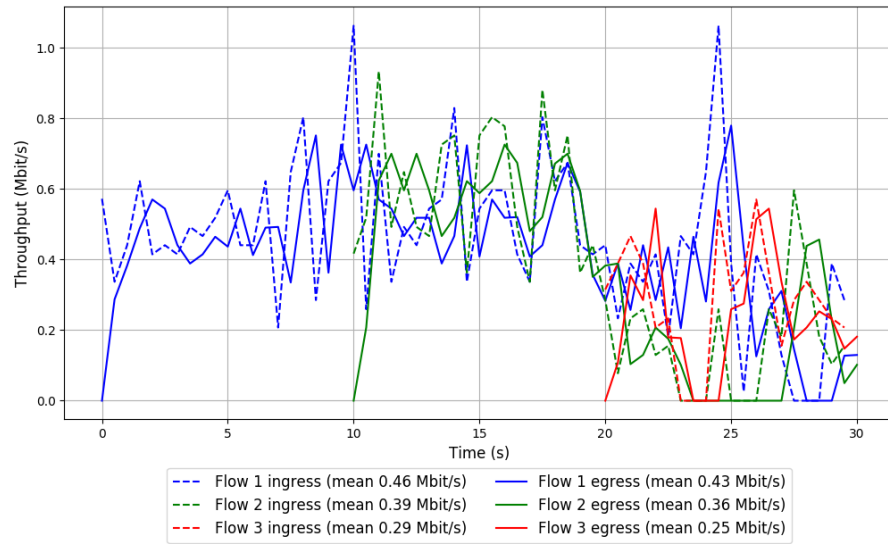


Run 1: Statistics of Copa

Start at: 2018-06-19 07:49:33  
End at: 2018-06-19 07:50:03  
Local clock offset: 3.175 ms  
Remote clock offset: -4.264 ms

# Below is generated by plot.py at 2018-06-19 08:31:51  
# Datalink statistics  
-- Total of 3 flows:  
Average throughput: 0.74 Mbit/s  
95th percentile per-packet one-way delay: 338.691 ms  
Loss rate: 8.56%  
-- Flow 1:  
Average throughput: 0.43 Mbit/s  
95th percentile per-packet one-way delay: 329.998 ms  
Loss rate: 6.99%  
-- Flow 2:  
Average throughput: 0.36 Mbit/s  
95th percentile per-packet one-way delay: 340.834 ms  
Loss rate: 8.79%  
-- Flow 3:  
Average throughput: 0.25 Mbit/s  
95th percentile per-packet one-way delay: 353.448 ms  
Loss rate: 15.58%

## Run 1: Report of Copa — Data Link

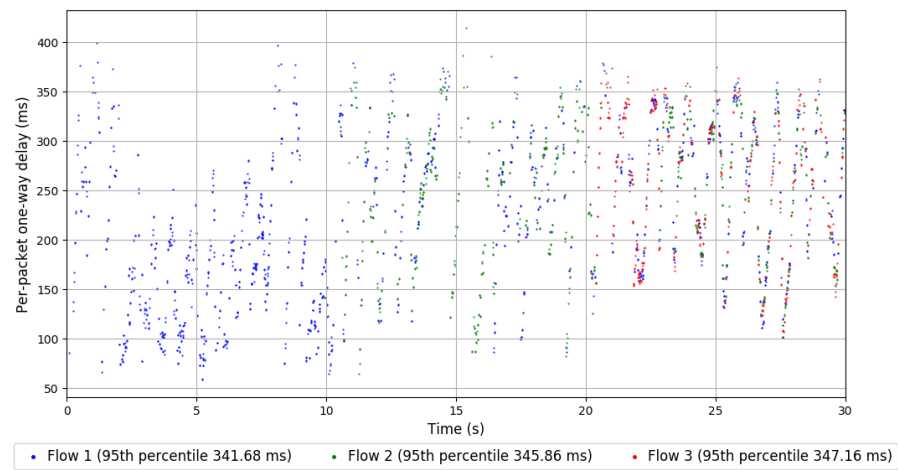
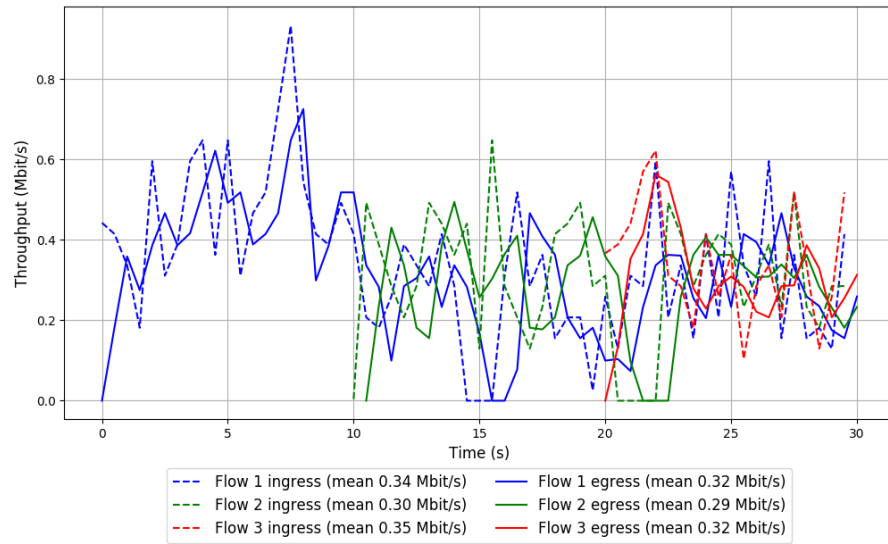


Run 2: Statistics of Copa

Start at: 2018-06-19 08:07:02  
End at: 2018-06-19 08:07:32  
Local clock offset: 2.245 ms  
Remote clock offset: -1.939 ms

# Below is generated by plot.py at 2018-06-19 08:31:51  
# Datalink statistics  
-- Total of 3 flows:  
Average throughput: 0.61 Mbit/s  
95th percentile per-packet one-way delay: 343.521 ms  
Loss rate: 7.49%  
-- Flow 1:  
Average throughput: 0.32 Mbit/s  
95th percentile per-packet one-way delay: 341.679 ms  
Loss rate: 6.96%  
-- Flow 2:  
Average throughput: 0.29 Mbit/s  
95th percentile per-packet one-way delay: 345.856 ms  
Loss rate: 7.85%  
-- Flow 3:  
Average throughput: 0.32 Mbit/s  
95th percentile per-packet one-way delay: 347.156 ms  
Loss rate: 8.43%

## Run 2: Report of Copa — Data Link

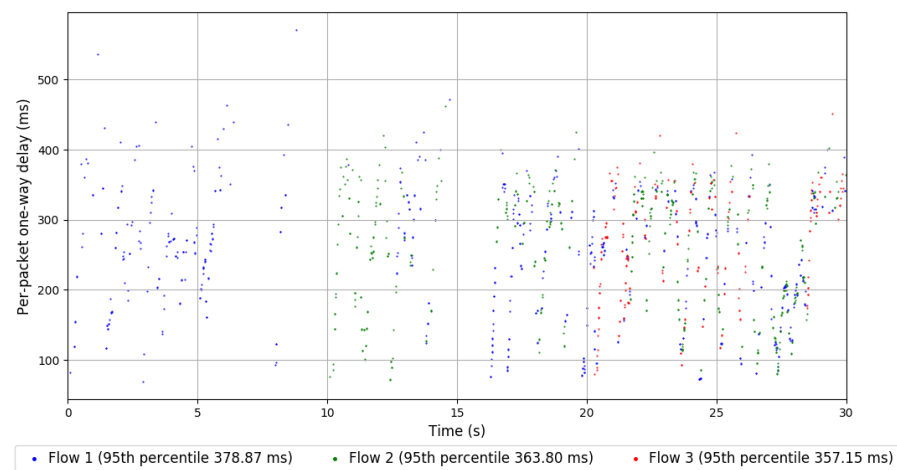
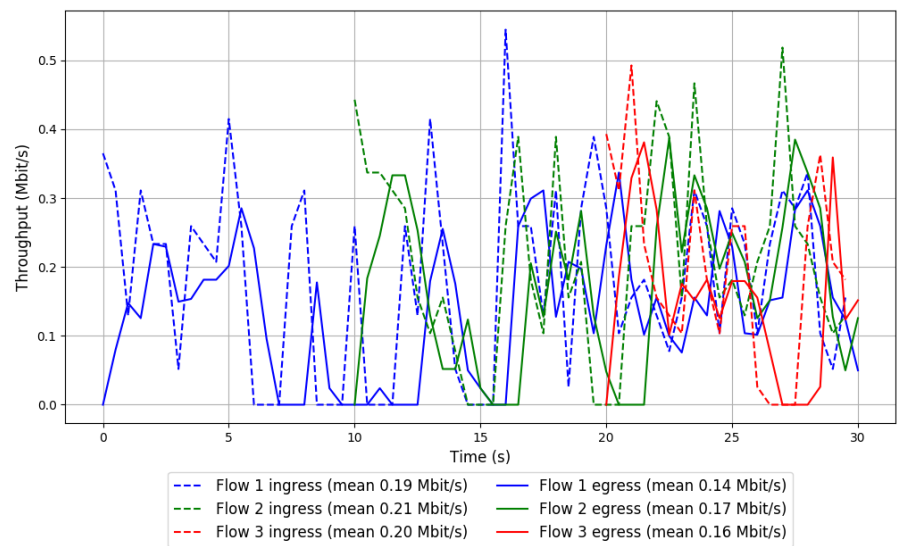


Run 3: Statistics of Copa

Start at: 2018-06-19 08:24:38  
End at: 2018-06-19 08:25:08  
Local clock offset: 1.179 ms  
Remote clock offset: -1.088 ms

```
# Below is generated by plot.py at 2018-06-19 08:31:51
# Datalink statistics
-- Total of 3 flows:
Average throughput: 0.31 Mbit/s
95th percentile per-packet one-way delay: 367.588 ms
Loss rate: 21.07%
-- Flow 1:
Average throughput: 0.14 Mbit/s
95th percentile per-packet one-way delay: 378.868 ms
Loss rate: 23.77%
-- Flow 2:
Average throughput: 0.17 Mbit/s
95th percentile per-packet one-way delay: 363.796 ms
Loss rate: 17.95%
-- Flow 3:
Average throughput: 0.16 Mbit/s
95th percentile per-packet one-way delay: 357.148 ms
Loss rate: 20.23%
```

Run 3: Report of Copa — Data Link



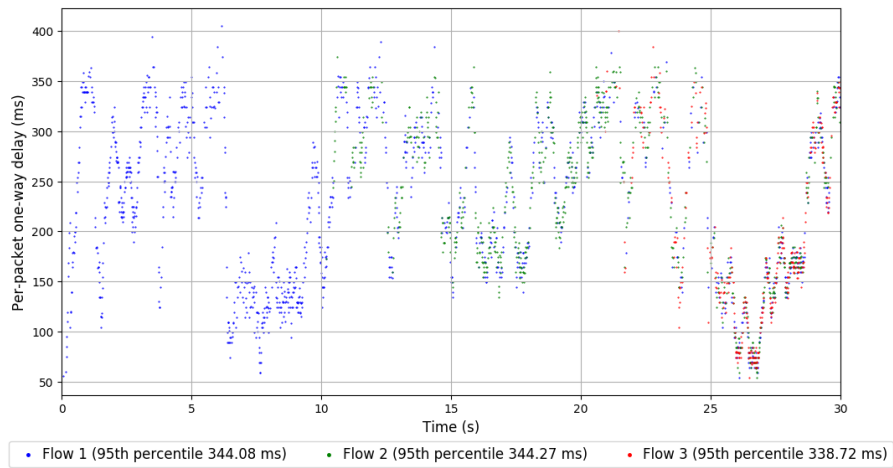
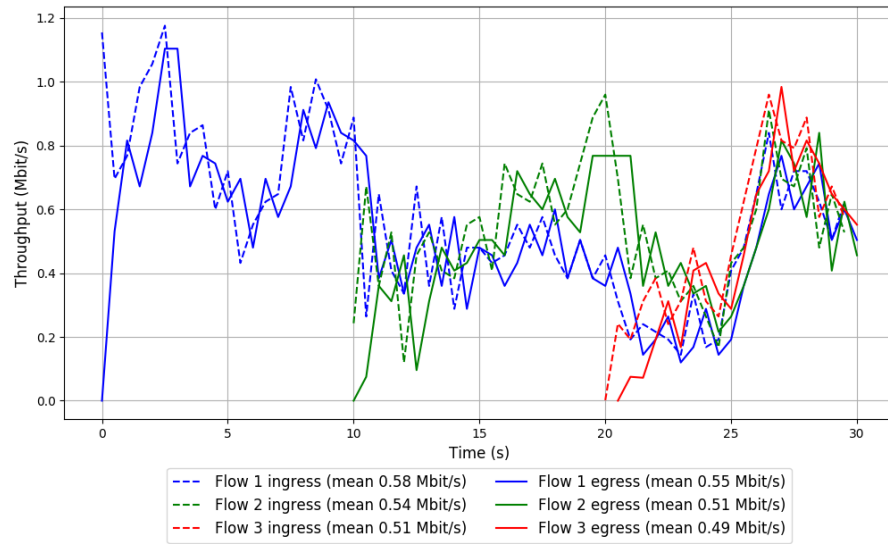
Run 1: Statistics of TCP Cubic

Start at: 2018-06-19 07:39:33  
End at: 2018-06-19 07:40:03  
Local clock offset: 4.079 ms  
Remote clock offset: -3.237 ms

# Below is generated by plot.py at 2018-06-19 08:31:51  
# Datalink statistics  
-- Total of 3 flows:  
Average throughput: 1.03 Mbit/s  
95th percentile per-packet one-way delay: 344.081 ms  
Loss rate: 6.19%  
-- Flow 1:  
Average throughput: 0.55 Mbit/s  
95th percentile per-packet one-way delay: 344.076 ms  
Loss rate: 5.35%  
-- Flow 2:  
Average throughput: 0.51 Mbit/s  
95th percentile per-packet one-way delay: 344.267 ms  
Loss rate: 7.03%  
-- Flow 3:  
Average throughput: 0.49 Mbit/s  
95th percentile per-packet one-way delay: 338.722 ms  
Loss rate: 7.28%



## Run 1: Report of TCP Cubic — Data Link

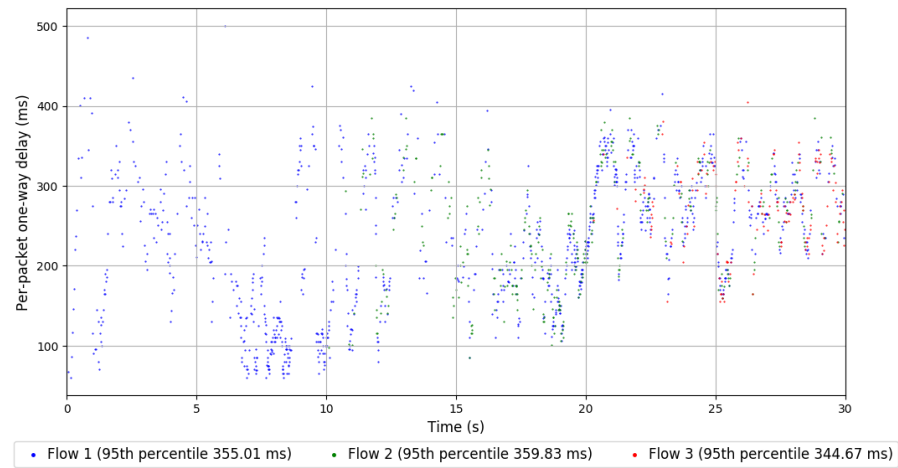
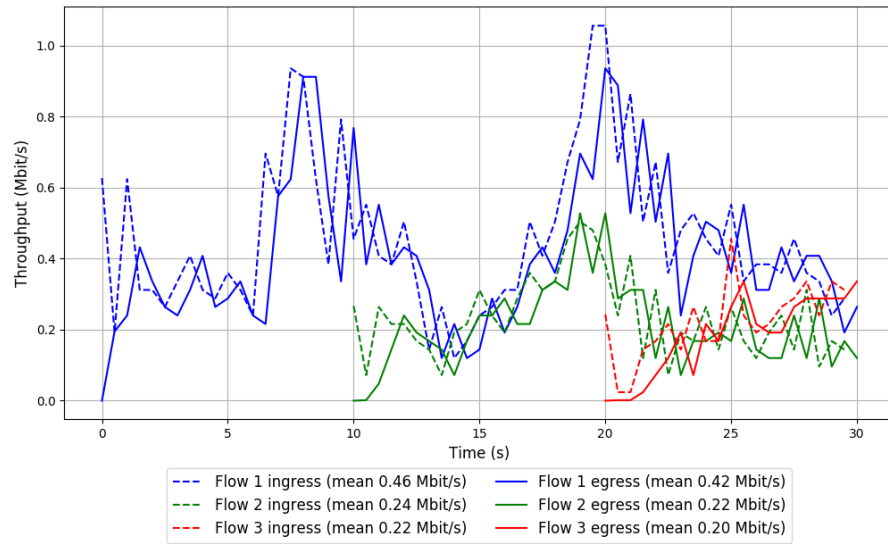


Run 2: Statistics of TCP Cubic

Start at: 2018-06-19 07:57:11  
End at: 2018-06-19 07:57:41  
Local clock offset: 3.326 ms  
Remote clock offset: -5.688 ms

# Below is generated by plot.py at 2018-06-19 08:31:51  
# Datalink statistics  
-- Total of 3 flows:  
Average throughput: 0.63 Mbit/s  
95th percentile per-packet one-way delay: 355.012 ms  
Loss rate: 9.66%  
-- Flow 1:  
Average throughput: 0.42 Mbit/s  
95th percentile per-packet one-way delay: 355.012 ms  
Loss rate: 8.87%  
-- Flow 2:  
Average throughput: 0.22 Mbit/s  
95th percentile per-packet one-way delay: 359.828 ms  
Loss rate: 9.91%  
-- Flow 3:  
Average throughput: 0.20 Mbit/s  
95th percentile per-packet one-way delay: 344.666 ms  
Loss rate: 14.04%

## Run 2: Report of TCP Cubic — Data Link

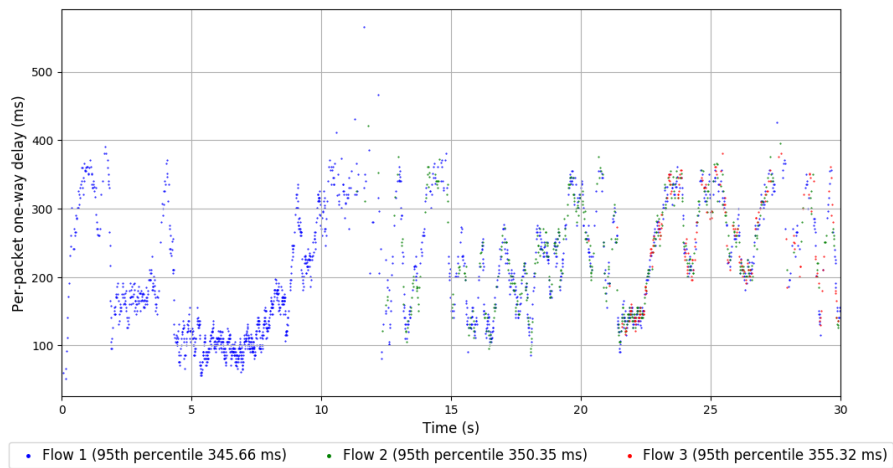
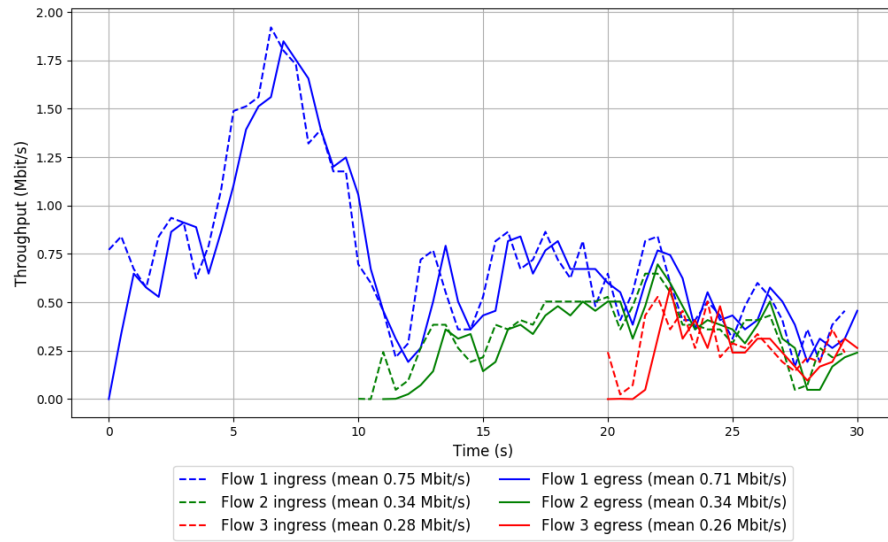


Run 3: Statistics of TCP Cubic

Start at: 2018-06-19 08:14:48  
End at: 2018-06-19 08:15:18  
Local clock offset: 3.478 ms  
Remote clock offset: -2.689 ms

# Below is generated by plot.py at 2018-06-19 08:31:54  
# Datalink statistics  
-- Total of 3 flows:  
Average throughput: 1.00 Mbit/s  
95th percentile per-packet one-way delay: 346.422 ms  
Loss rate: 5.83%  
-- Flow 1:  
Average throughput: 0.71 Mbit/s  
95th percentile per-packet one-way delay: 345.657 ms  
Loss rate: 4.72%  
-- Flow 2:  
Average throughput: 0.34 Mbit/s  
95th percentile per-packet one-way delay: 350.351 ms  
Loss rate: 7.13%  
-- Flow 3:  
Average throughput: 0.26 Mbit/s  
95th percentile per-packet one-way delay: 355.323 ms  
Loss rate: 11.61%

### Run 3: Report of TCP Cubic — Data Link

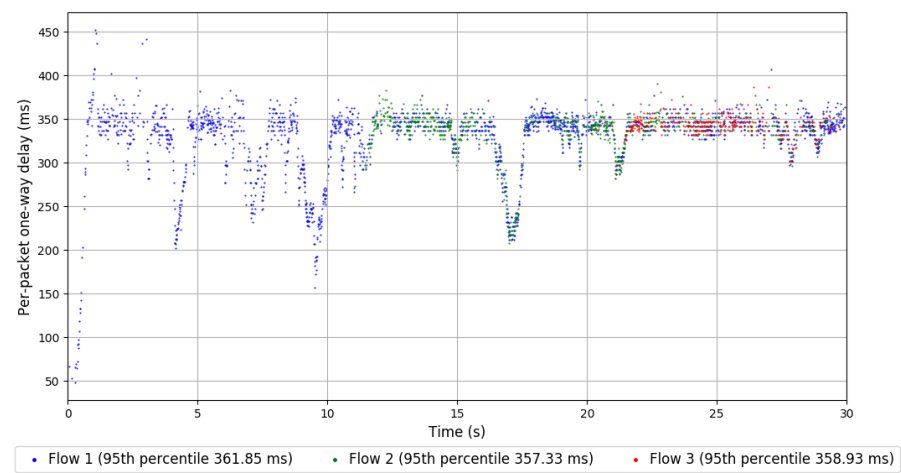
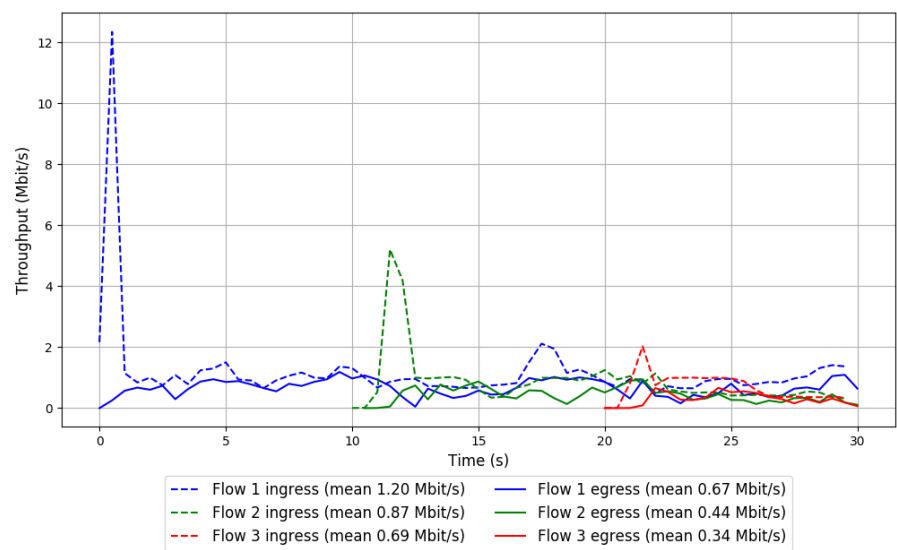


Run 1: Statistics of FillP

Start at: 2018-06-19 07:41:48  
End at: 2018-06-19 07:42:18  
Local clock offset: 2.784 ms  
Remote clock offset: -3.485 ms

# Below is generated by plot.py at 2018-06-19 08:31:57  
# Datalink statistics  
-- Total of 3 flows:  
Average throughput: 1.06 Mbit/s  
95th percentile per-packet one-way delay: 361.642 ms  
Loss rate: 47.47%  
-- Flow 1:  
Average throughput: 0.67 Mbit/s  
95th percentile per-packet one-way delay: 361.854 ms  
Loss rate: 44.56%  
-- Flow 2:  
Average throughput: 0.44 Mbit/s  
95th percentile per-packet one-way delay: 357.334 ms  
Loss rate: 51.02%  
-- Flow 3:  
Average throughput: 0.34 Mbit/s  
95th percentile per-packet one-way delay: 358.928 ms  
Loss rate: 53.81%

Run 1: Report of FillP — Data Link



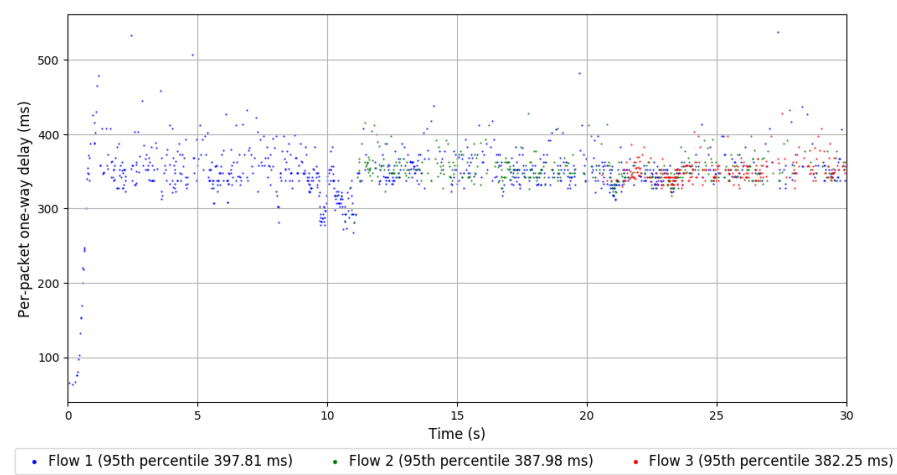
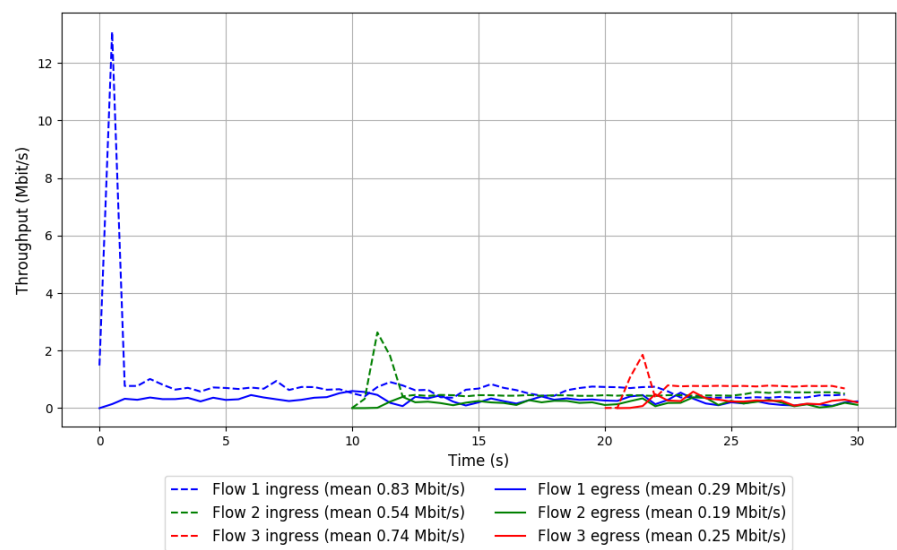
Run 2: Statistics of FillP

Start at: 2018-06-19 07:59:22  
End at: 2018-06-19 07:59:52  
Local clock offset: 1.223 ms  
Remote clock offset: -6.474 ms

# Below is generated by plot.py at 2018-06-19 08:31:57  
# Datalink statistics  
-- Total of 3 flows:  
Average throughput: 0.49 Mbit/s  
95th percentile per-packet one-way delay: 392.746 ms  
Loss rate: 65.96%  
-- Flow 1:  
Average throughput: 0.29 Mbit/s  
95th percentile per-packet one-way delay: 397.812 ms  
Loss rate: 65.48%  
-- Flow 2:  
Average throughput: 0.19 Mbit/s  
95th percentile per-packet one-way delay: 387.975 ms  
Loss rate: 65.32%  
-- Flow 3:  
Average throughput: 0.25 Mbit/s  
95th percentile per-packet one-way delay: 382.253 ms  
Loss rate: 68.48%



Run 2: Report of FillP — Data Link

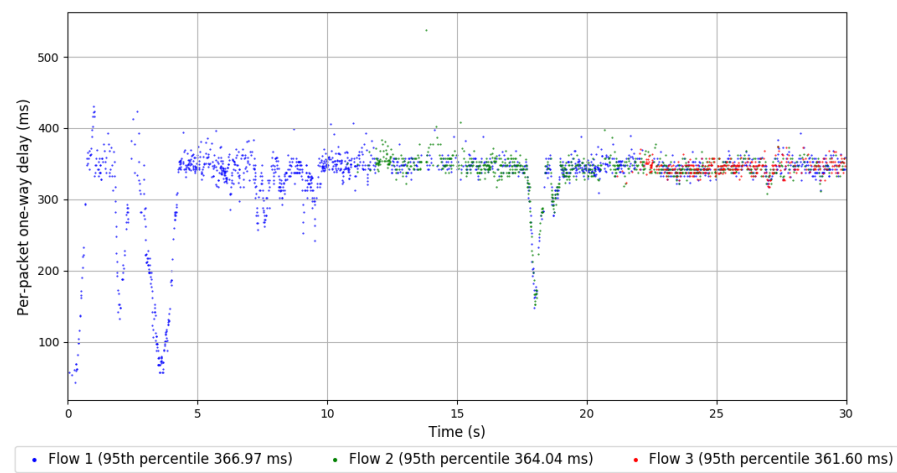
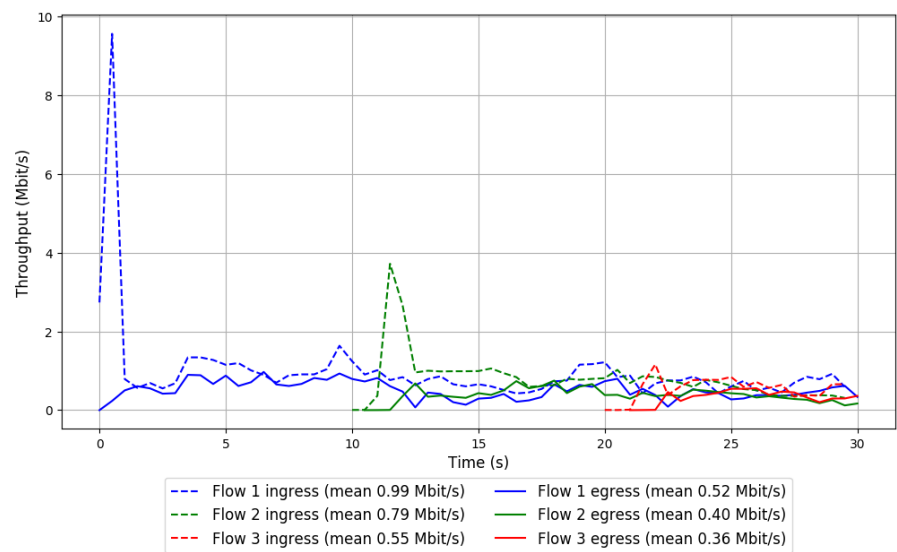


Run 3: Statistics of FillP

Start at: 2018-06-19 08:16:59  
End at: 2018-06-19 08:17:29  
Local clock offset: 2.683 ms  
Remote clock offset: -0.697 ms

# Below is generated by plot.py at 2018-06-19 08:31:57  
# Datalink statistics  
-- Total of 3 flows:  
Average throughput: 0.88 Mbit/s  
95th percentile per-packet one-way delay: 365.219 ms  
Loss rate: 48.49%  
-- Flow 1:  
Average throughput: 0.52 Mbit/s  
95th percentile per-packet one-way delay: 366.966 ms  
Loss rate: 47.92%  
-- Flow 2:  
Average throughput: 0.40 Mbit/s  
95th percentile per-packet one-way delay: 364.038 ms  
Loss rate: 51.79%  
-- Flow 3:  
Average throughput: 0.36 Mbit/s  
95th percentile per-packet one-way delay: 361.599 ms  
Loss rate: 41.96%

Run 3: Report of FillP — Data Link

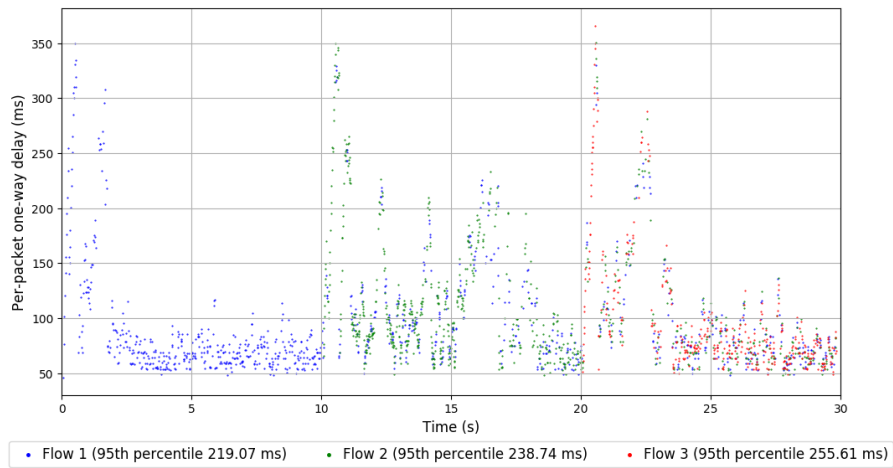
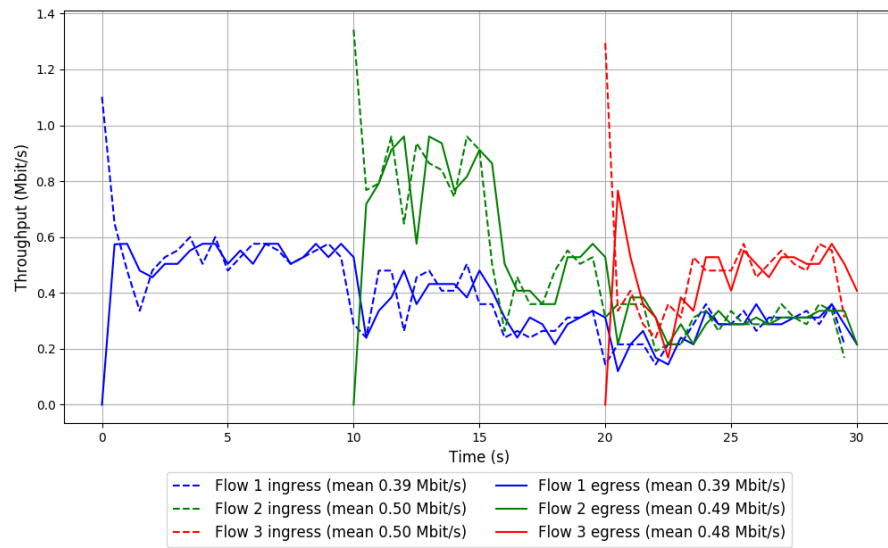


Run 1: Statistics of Indigo

Start at: 2018-06-19 07:40:38  
End at: 2018-06-19 07:41:08  
Local clock offset: 1.429 ms  
Remote clock offset: -3.105 ms

# Below is generated by plot.py at 2018-06-19 08:31:57  
# Datalink statistics  
-- Total of 3 flows:  
Average throughput: 0.87 Mbit/s  
95th percentile per-packet one-way delay: 234.214 ms  
Loss rate: 2.18%  
-- Flow 1:  
Average throughput: 0.39 Mbit/s  
95th percentile per-packet one-way delay: 219.066 ms  
Loss rate: 2.04%  
-- Flow 2:  
Average throughput: 0.49 Mbit/s  
95th percentile per-packet one-way delay: 238.743 ms  
Loss rate: 1.70%  
-- Flow 3:  
Average throughput: 0.48 Mbit/s  
95th percentile per-packet one-way delay: 255.610 ms  
Loss rate: 3.46%

## Run 1: Report of Indigo — Data Link

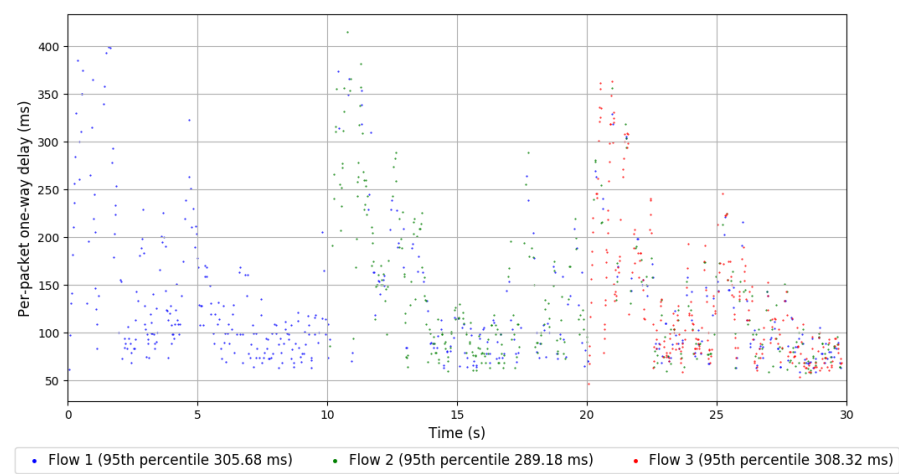
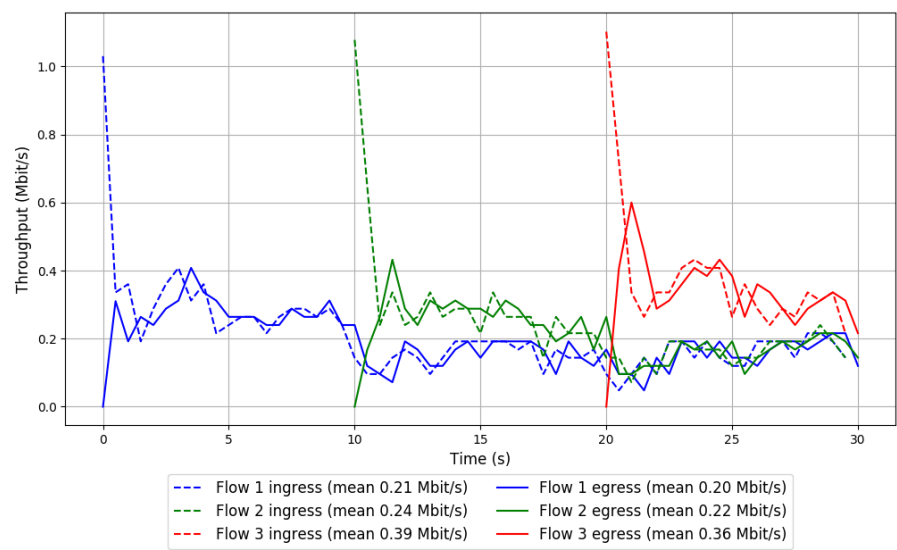


Run 2: Statistics of Indigo

Start at: 2018-06-19 07:58:17  
End at: 2018-06-19 07:58:47  
Local clock offset: 3.63 ms  
Remote clock offset: -6.888 ms

# Below is generated by plot.py at 2018-06-19 08:31:57  
# Datalink statistics  
-- Total of 3 flows:  
Average throughput: 0.46 Mbit/s  
95th percentile per-packet one-way delay: 304.015 ms  
Loss rate: 9.23%  
-- Flow 1:  
Average throughput: 0.20 Mbit/s  
95th percentile per-packet one-way delay: 305.677 ms  
Loss rate: 7.61%  
-- Flow 2:  
Average throughput: 0.22 Mbit/s  
95th percentile per-packet one-way delay: 289.179 ms  
Loss rate: 11.71%  
-- Flow 3:  
Average throughput: 0.36 Mbit/s  
95th percentile per-packet one-way delay: 308.317 ms  
Loss rate: 8.78%

Run 2: Report of Indigo — Data Link



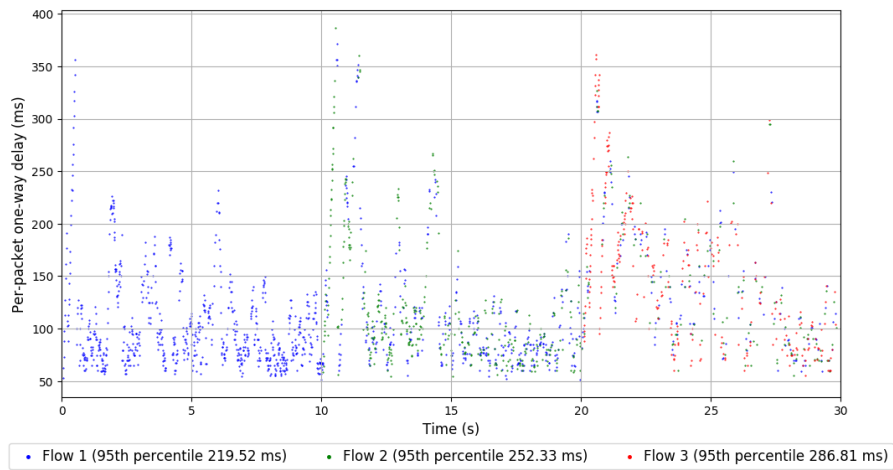
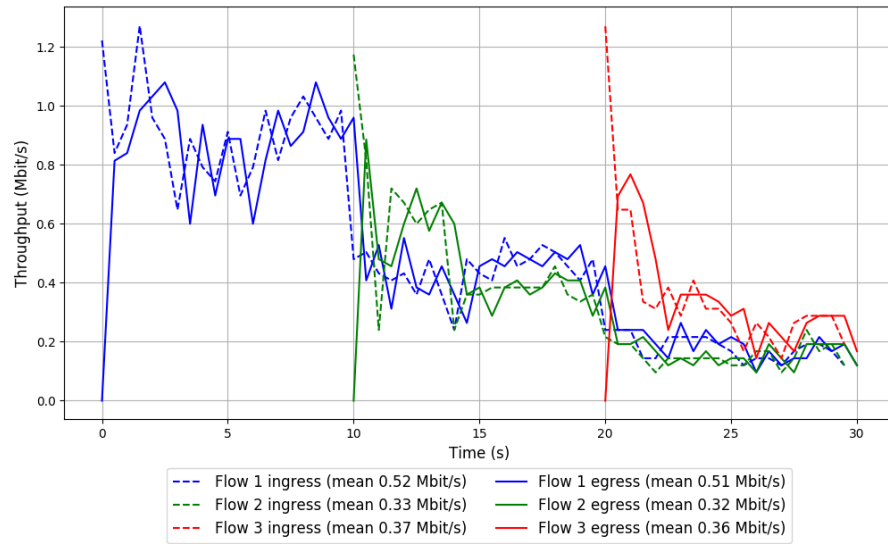
Run 3: Statistics of Indigo

Start at: 2018-06-19 08:15:53  
End at: 2018-06-19 08:16:24  
Local clock offset: 2.446 ms  
Remote clock offset: -0.392 ms

# Below is generated by plot.py at 2018-06-19 08:31:57  
# Datalink statistics  
-- Total of 3 flows:  
Average throughput: 0.84 Mbit/s  
95th percentile per-packet one-way delay: 240.461 ms  
Loss rate: 2.26%  
-- Flow 1:  
Average throughput: 0.51 Mbit/s  
95th percentile per-packet one-way delay: 219.524 ms  
Loss rate: 1.33%  
-- Flow 2:  
Average throughput: 0.32 Mbit/s  
95th percentile per-packet one-way delay: 252.331 ms  
Loss rate: 3.13%  
-- Flow 3:  
Average throughput: 0.36 Mbit/s  
95th percentile per-packet one-way delay: 286.810 ms  
Loss rate: 4.61%



### Run 3: Report of Indigo — Data Link

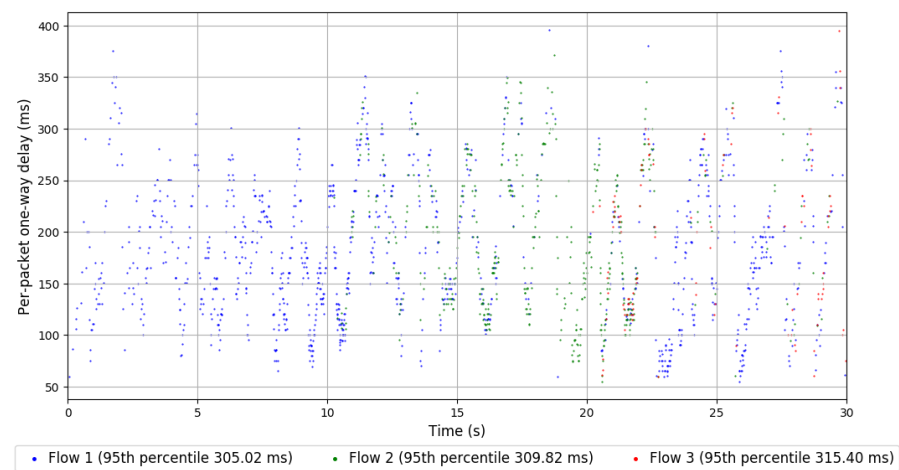
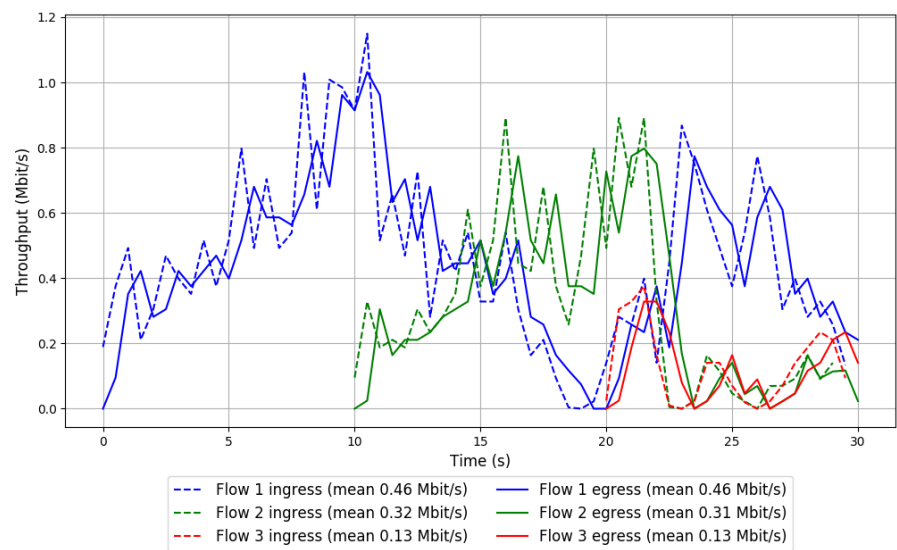


Run 1: Statistics of LEDBAT

Start at: 2018-06-19 07:50:38  
End at: 2018-06-19 07:51:08  
Local clock offset: 2.577 ms  
Remote clock offset: -4.467 ms

# Below is generated by plot.py at 2018-06-19 08:31:57  
# Datalink statistics  
-- Total of 3 flows:  
Average throughput: 0.70 Mbit/s  
95th percentile per-packet one-way delay: 305.321 ms  
Loss rate: 0.76%  
-- Flow 1:  
Average throughput: 0.46 Mbit/s  
95th percentile per-packet one-way delay: 305.018 ms  
Loss rate: 0.40%  
-- Flow 2:  
Average throughput: 0.31 Mbit/s  
95th percentile per-packet one-way delay: 309.824 ms  
Loss rate: 1.14%  
-- Flow 3:  
Average throughput: 0.13 Mbit/s  
95th percentile per-packet one-way delay: 315.398 ms  
Loss rate: 2.75%

Run 1: Report of LEDBAT — Data Link

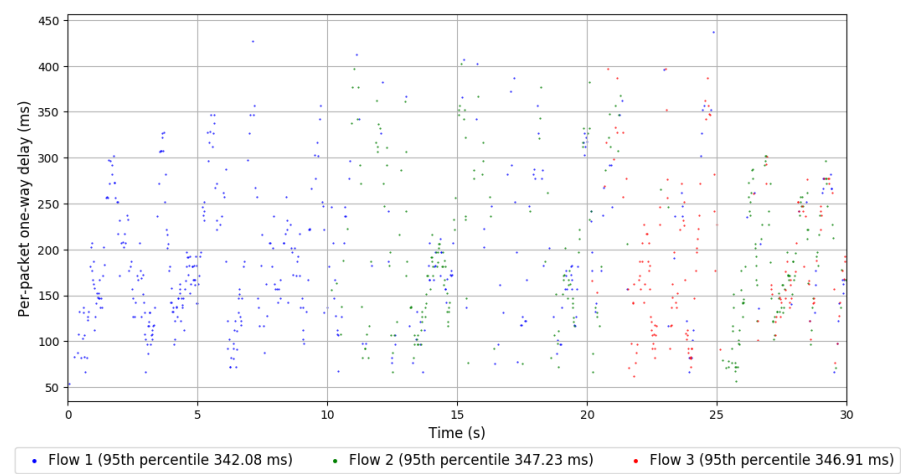
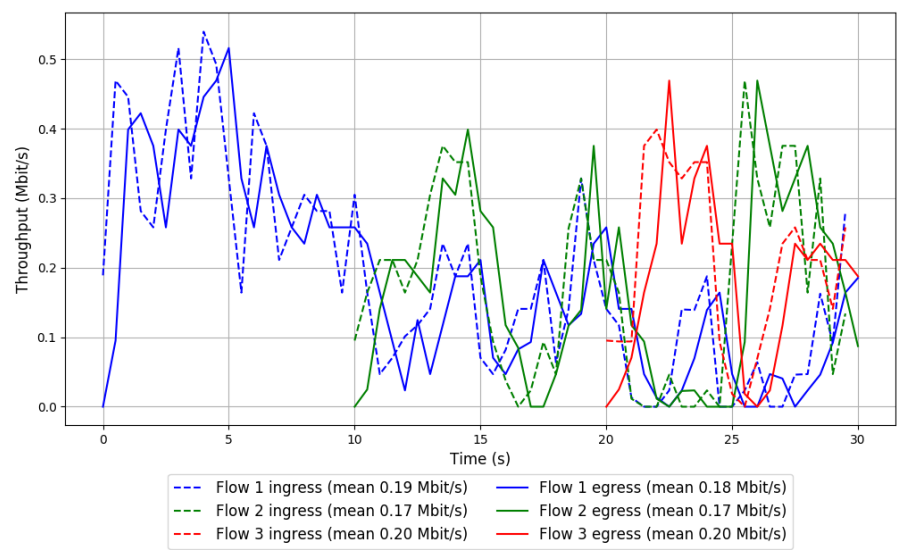


Run 2: Statistics of LEDBAT

Start at: 2018-06-19 08:08:08  
End at: 2018-06-19 08:08:38  
Local clock offset: 2.268 ms  
Remote clock offset: -4.757 ms

# Below is generated by plot.py at 2018-06-19 08:31:58  
# Datalink statistics  
-- Total of 3 flows:  
Average throughput: 0.36 Mbit/s  
95th percentile per-packet one-way delay: 346.882 ms  
Loss rate: 3.91%  
-- Flow 1:  
Average throughput: 0.18 Mbit/s  
95th percentile per-packet one-way delay: 342.084 ms  
Loss rate: 3.97%  
-- Flow 2:  
Average throughput: 0.17 Mbit/s  
95th percentile per-packet one-way delay: 347.227 ms  
Loss rate: 2.38%  
-- Flow 3:  
Average throughput: 0.20 Mbit/s  
95th percentile per-packet one-way delay: 346.910 ms  
Loss rate: 6.33%

Run 2: Report of LEDBAT — Data Link

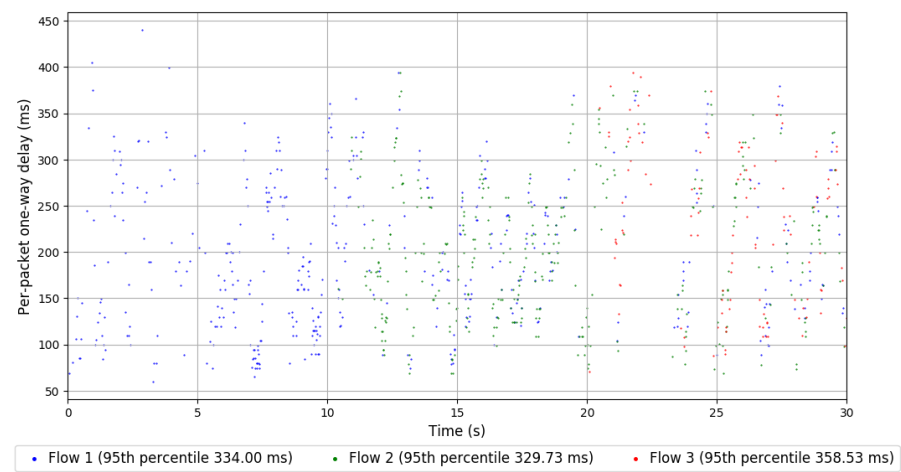
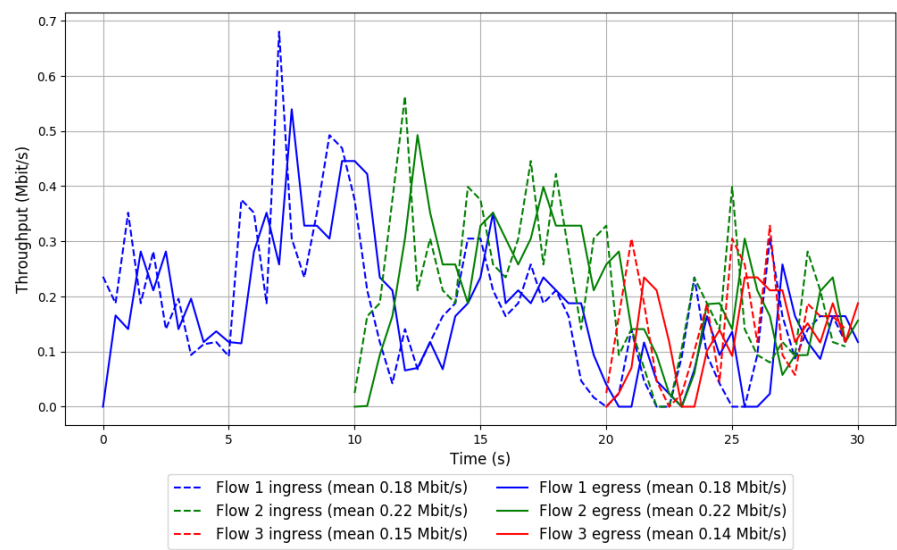


Run 3: Statistics of LEDBAT

Start at: 2018-06-19 08:25:44  
End at: 2018-06-19 08:26:14  
Local clock offset: 4.046 ms  
Remote clock offset: -2.362 ms

# Below is generated by plot.py at 2018-06-19 08:31:58  
# Datalink statistics  
-- Total of 3 flows:  
Average throughput: 0.36 Mbit/s  
95th percentile per-packet one-way delay: 338.682 ms  
Loss rate: 2.52%  
-- Flow 1:  
Average throughput: 0.18 Mbit/s  
95th percentile per-packet one-way delay: 333.998 ms  
Loss rate: 2.17%  
-- Flow 2:  
Average throughput: 0.22 Mbit/s  
95th percentile per-packet one-way delay: 329.730 ms  
Loss rate: 2.18%  
-- Flow 3:  
Average throughput: 0.14 Mbit/s  
95th percentile per-packet one-way delay: 358.533 ms  
Loss rate: 4.85%

Run 3: Report of LEDBAT — Data Link



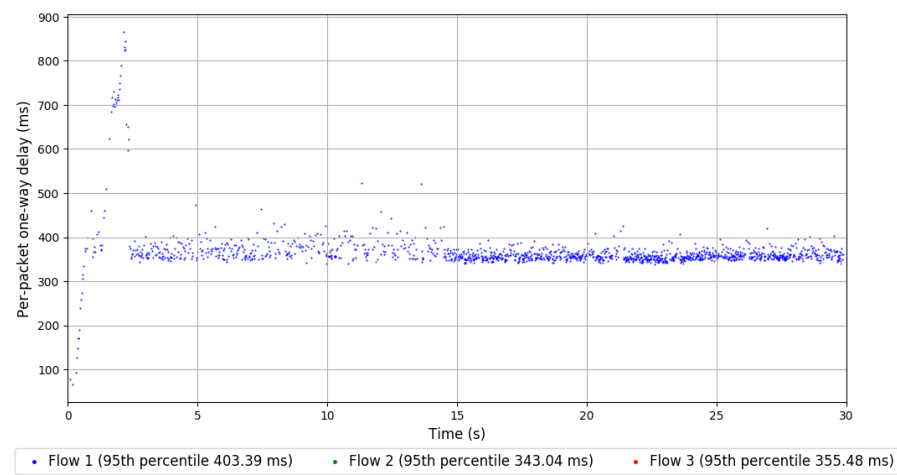
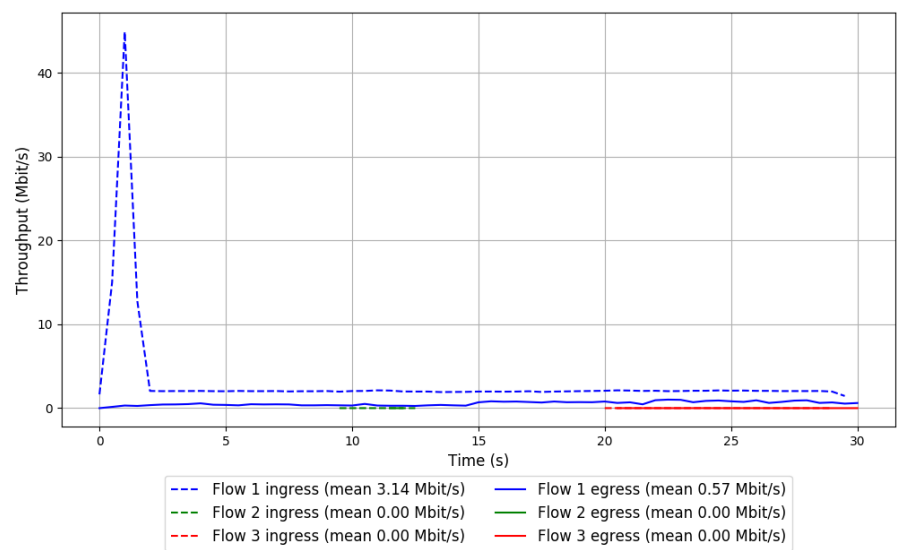
Run 1: Statistics of PCC-Allegro

Start at: 2018-06-19 07:55:00  
End at: 2018-06-19 07:55:30  
Local clock offset: 2.422 ms  
Remote clock offset: -6.534 ms

# Below is generated by plot.py at 2018-06-19 08:31:59  
# Datalink statistics  
-- Total of 3 flows:  
Average throughput: 0.57 Mbit/s  
95th percentile per-packet one-way delay: 403.388 ms  
Loss rate: 81.74%  
-- Flow 1:  
Average throughput: 0.57 Mbit/s  
95th percentile per-packet one-way delay: 403.388 ms  
Loss rate: 81.75%  
-- Flow 2:  
Average throughput: 0.00 Mbit/s  
95th percentile per-packet one-way delay: 343.036 ms  
Loss rate: 92.31%  
-- Flow 3:  
Average throughput: 0.00 Mbit/s  
95th percentile per-packet one-way delay: 355.476 ms  
Loss rate: 71.45%



Run 1: Report of PCC-Allegro — Data Link



Run 2: Statistics of PCC-Allegro

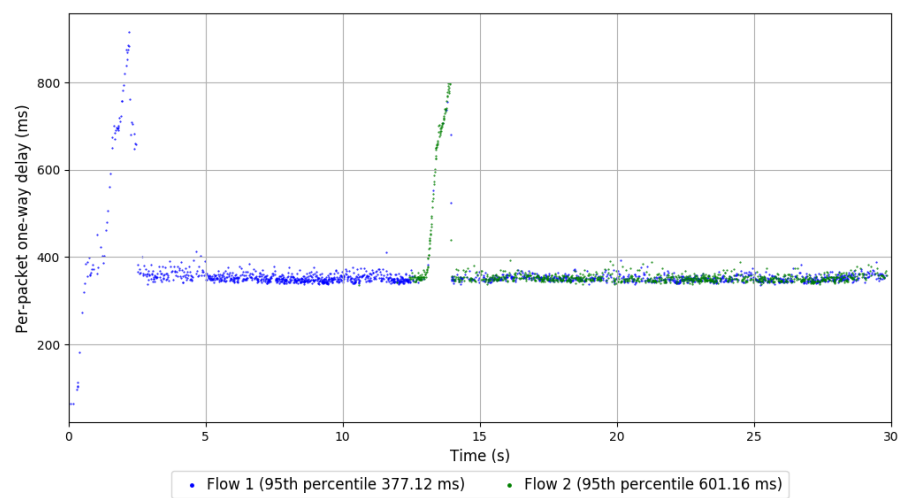
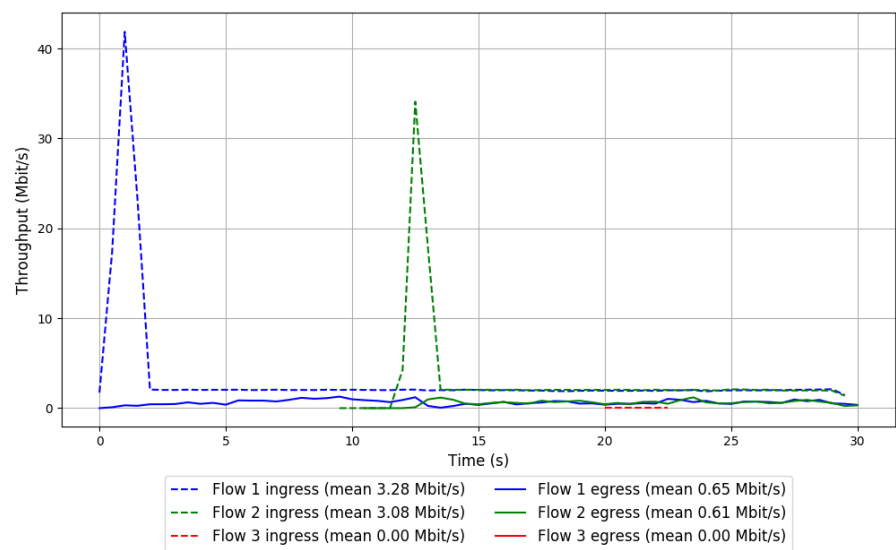
Start at: 2018-06-19 08:12:36

End at: 2018-06-19 08:13:06

Local clock offset: 1.477 ms

Remote clock offset: -1.605 ms

Run 2: Report of PCC-Allegro — Data Link



Run 3: Statistics of PCC-Allegro

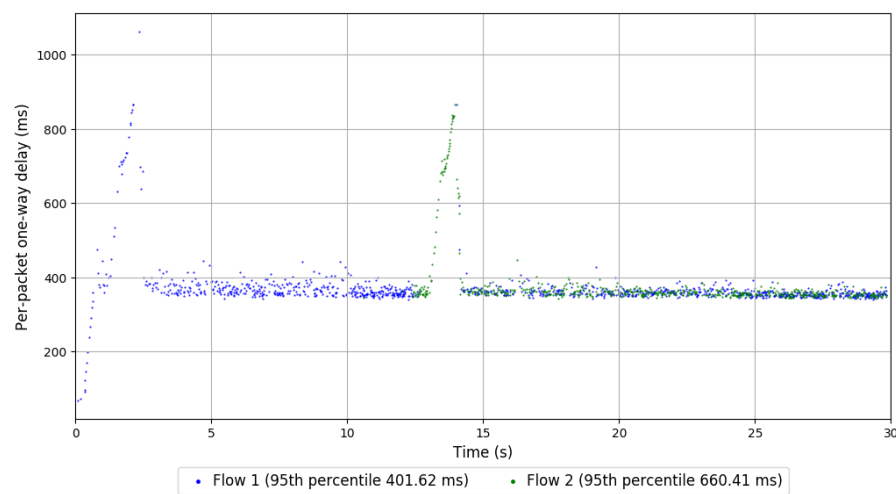
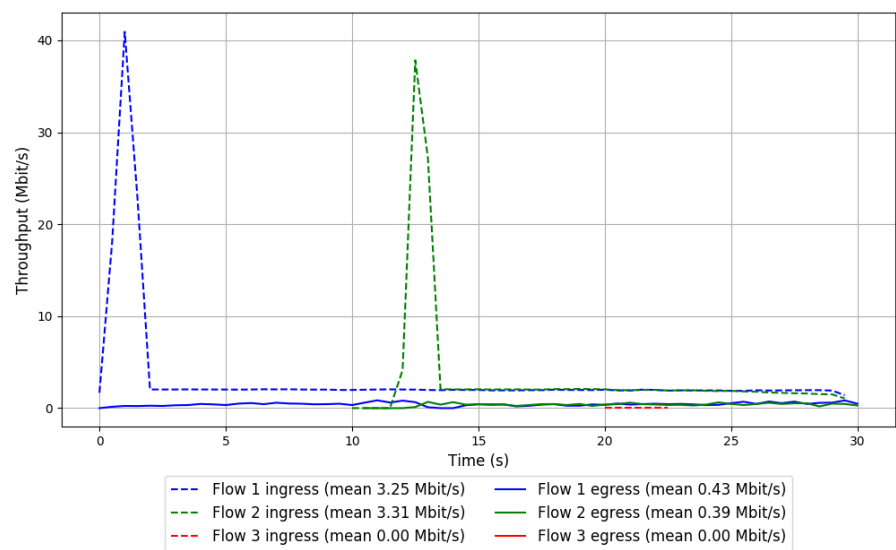
Start at: 2018-06-19 08:30:06

End at: 2018-06-19 08:30:36

Local clock offset: 3.198 ms

Remote clock offset: -1.122 ms

Run 3: Report of PCC-Allegro — Data Link



Run 1: Statistics of PCC-Expr

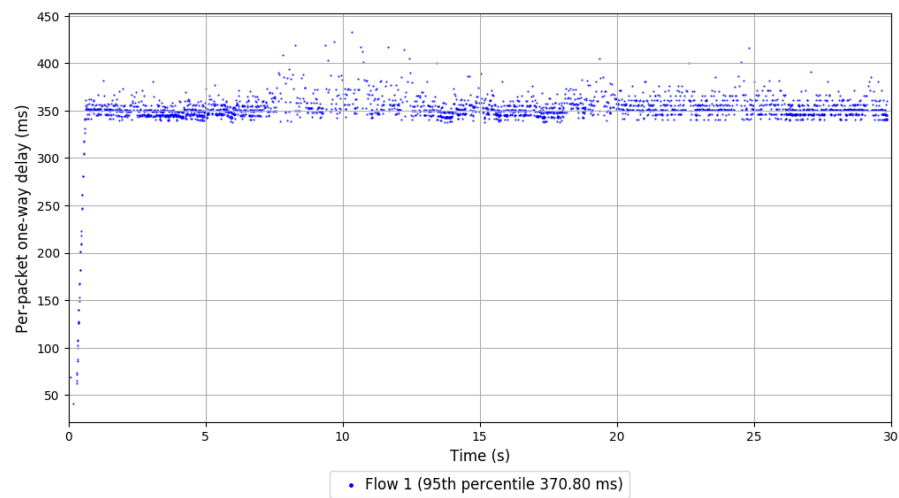
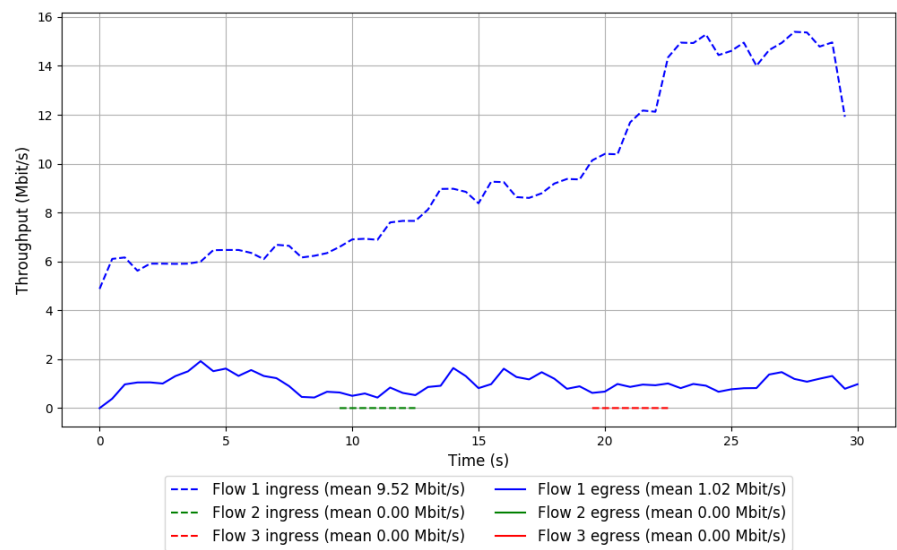
Start at: 2018-06-19 07:42:54

End at: 2018-06-19 07:43:24

Local clock offset: 1.079 ms

Remote clock offset: -3.886 ms

Run 1: Report of PCC-Expr — Data Link



Run 2: Statistics of PCC-Expr

Start at: 2018-06-19 08:00:28

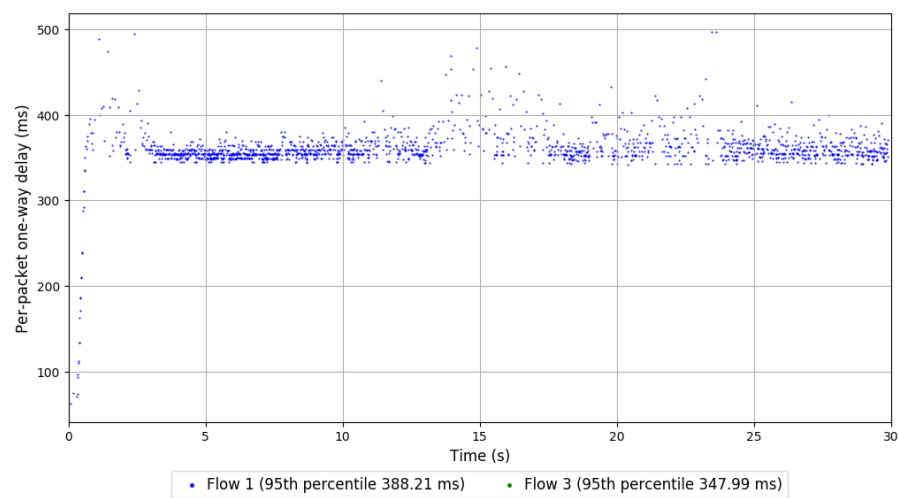
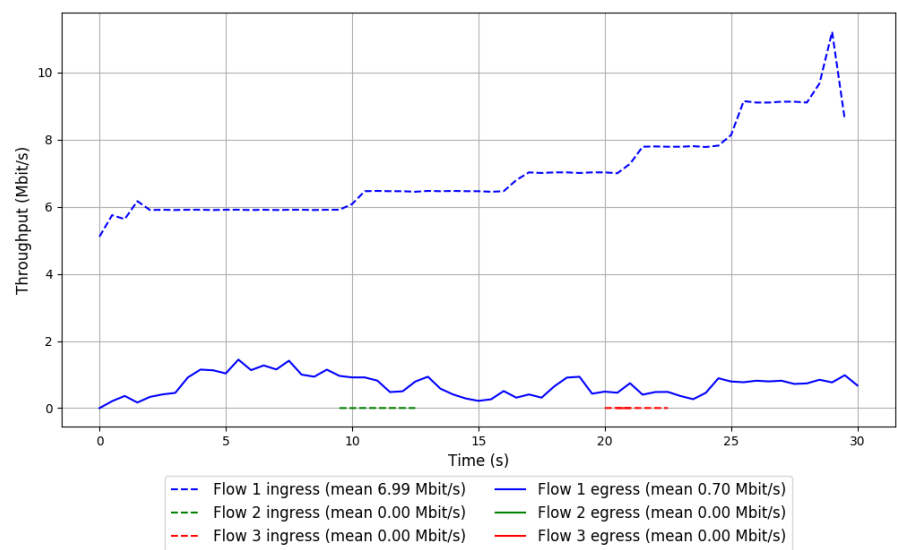
End at: 2018-06-19 08:00:58

Local clock offset: 2.81 ms

Remote clock offset: -6.778 ms



Run 2: Report of PCC-Expr — Data Link



Run 3: Statistics of PCC-Expr

Start at: 2018-06-19 08:18:04

End at: 2018-06-19 08:18:34

Local clock offset: 2.186 ms

Remote clock offset: -1.01 ms

# Below is generated by plot.py at 2018-06-19 08:32:20

# Datalink statistics

-- Total of 3 flows:

Average throughput: 1.03 Mbit/s

95th percentile per-packet one-way delay: 587.611 ms

Loss rate: 93.31%

-- Flow 1:

Average throughput: 0.58 Mbit/s

95th percentile per-packet one-way delay: 461.988 ms

Loss rate: 91.23%

-- Flow 2:

Average throughput: 0.71 Mbit/s

95th percentile per-packet one-way delay: 680.999 ms

Loss rate: 94.85%

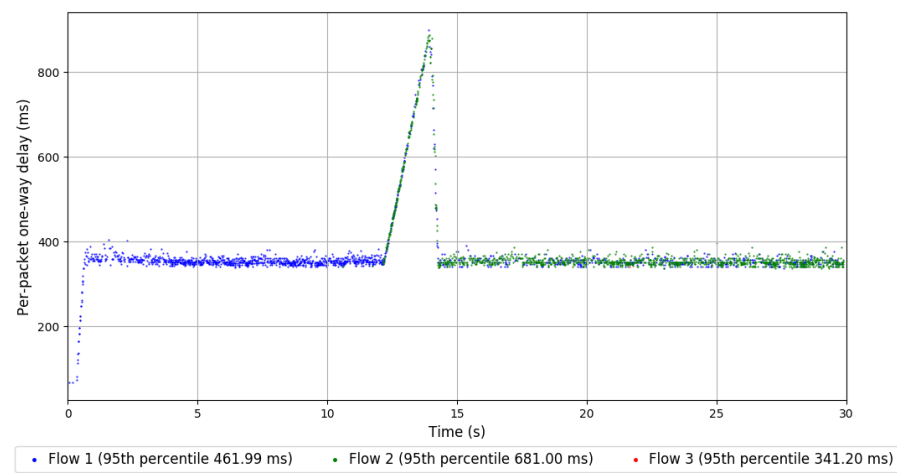
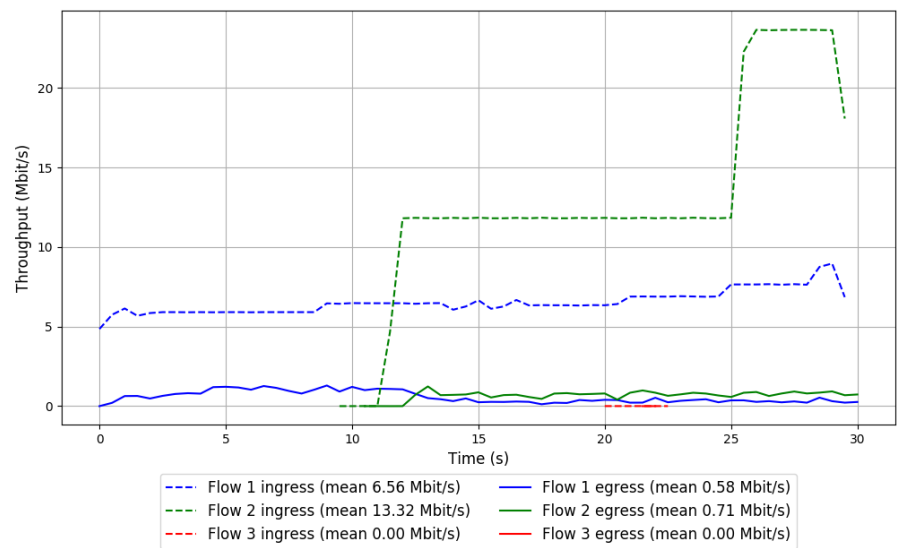
-- Flow 3:

Average throughput: 0.00 Mbit/s

95th percentile per-packet one-way delay: 341.204 ms

Loss rate: 92.31%

Run 3: Report of PCC-Expr — Data Link

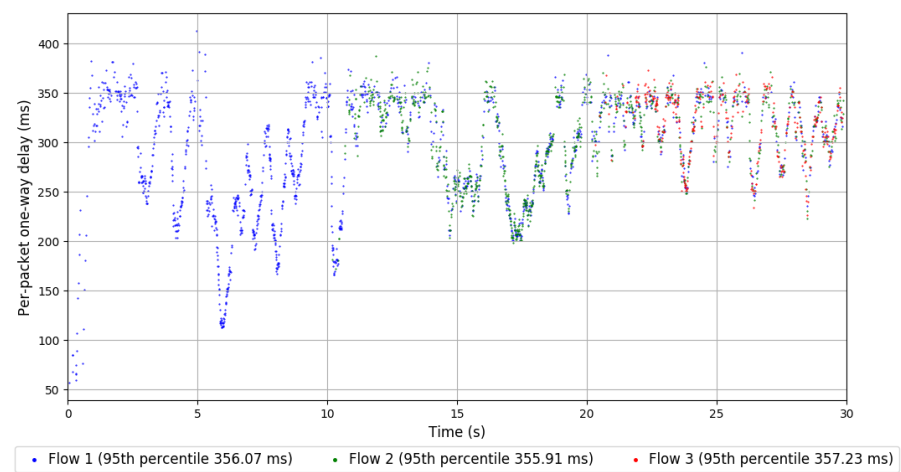
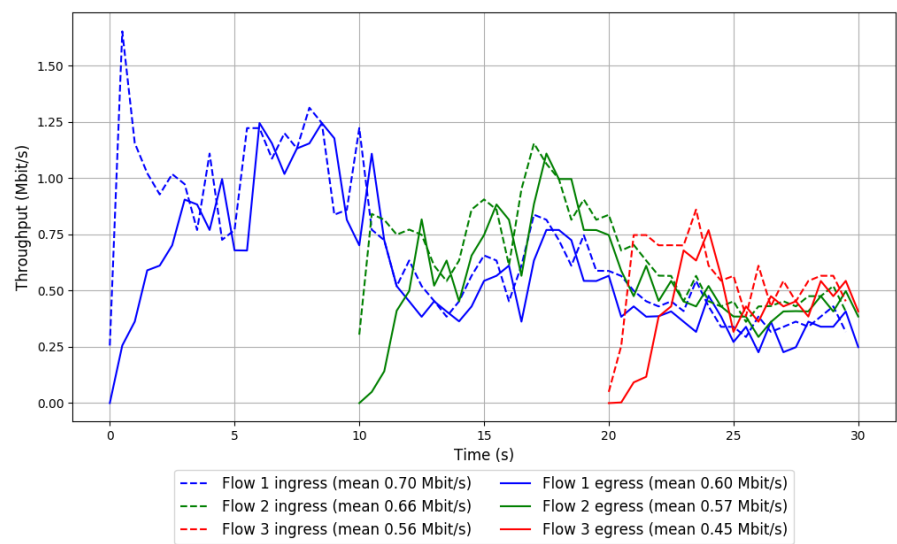


Run 1: Statistics of QUIC Cubic

Start at: 2018-06-19 07:44:00  
End at: 2018-06-19 07:44:30  
Local clock offset: 2.925 ms  
Remote clock offset: -3.894 ms

# Below is generated by plot.py at 2018-06-19 08:32:20  
# Datalink statistics  
-- Total of 3 flows:  
Average throughput: 1.11 Mbit/s  
95th percentile per-packet one-way delay: 356.069 ms  
Loss rate: 15.99%  
-- Flow 1:  
Average throughput: 0.60 Mbit/s  
95th percentile per-packet one-way delay: 356.069 ms  
Loss rate: 14.86%  
-- Flow 2:  
Average throughput: 0.57 Mbit/s  
95th percentile per-packet one-way delay: 355.906 ms  
Loss rate: 14.83%  
-- Flow 3:  
Average throughput: 0.45 Mbit/s  
95th percentile per-packet one-way delay: 357.229 ms  
Loss rate: 23.02%

Run 1: Report of QUIC Cubic — Data Link

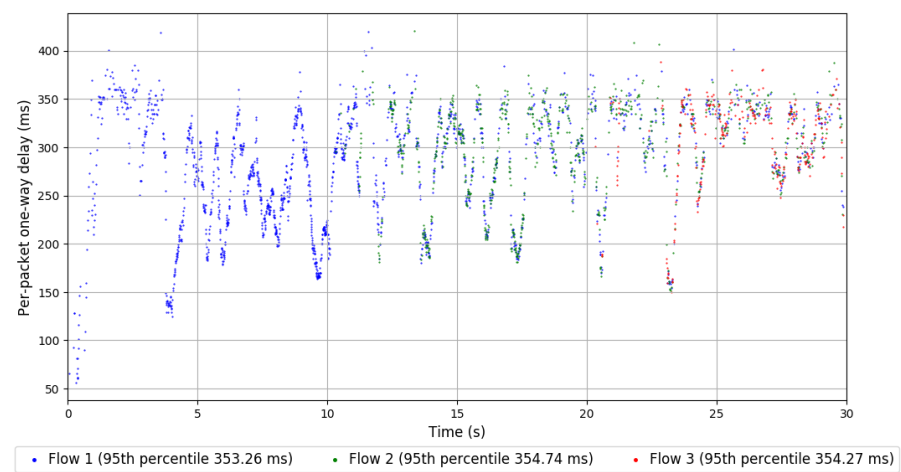
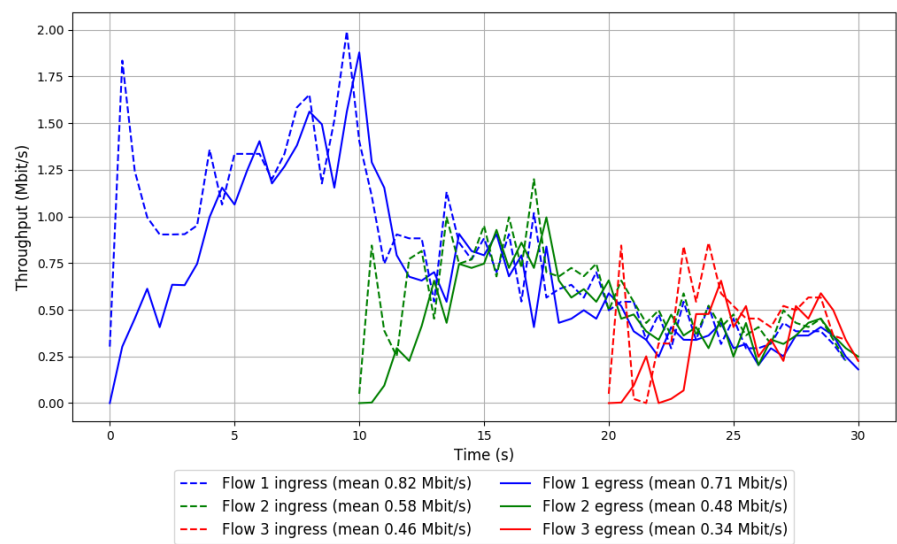


Run 2: Statistics of QUIC Cubic

Start at: 2018-06-19 08:01:34  
End at: 2018-06-19 08:02:04  
Local clock offset: 1.002 ms  
Remote clock offset: -5.273 ms

# Below is generated by plot.py at 2018-06-19 08:32:20  
# Datalink statistics  
-- Total of 3 flows:  
Average throughput: 1.13 Mbit/s  
95th percentile per-packet one-way delay: 354.319 ms  
Loss rate: 16.88%  
-- Flow 1:  
Average throughput: 0.71 Mbit/s  
95th percentile per-packet one-way delay: 353.261 ms  
Loss rate: 14.31%  
-- Flow 2:  
Average throughput: 0.48 Mbit/s  
95th percentile per-packet one-way delay: 354.741 ms  
Loss rate: 17.50%  
-- Flow 3:  
Average throughput: 0.34 Mbit/s  
95th percentile per-packet one-way delay: 354.270 ms  
Loss rate: 29.26%

Run 2: Report of QUIC Cubic — Data Link



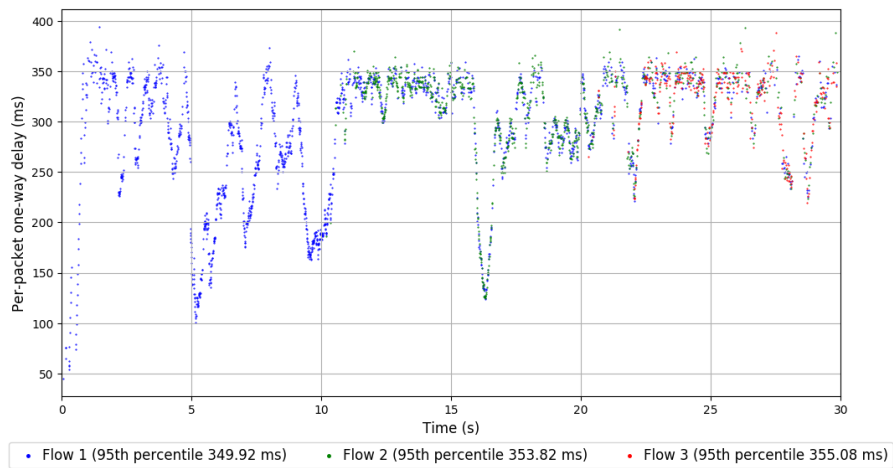
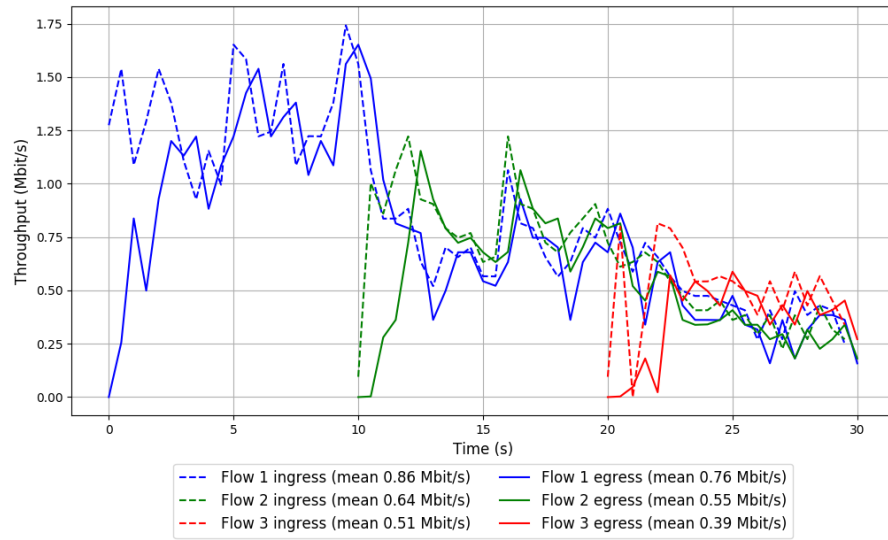
Run 3: Statistics of QUIC Cubic

Start at: 2018-06-19 08:19:11  
End at: 2018-06-19 08:19:41  
Local clock offset: 0.887 ms  
Remote clock offset: -0.314 ms

# Below is generated by plot.py at 2018-06-19 08:32:20  
# Datalink statistics  
-- Total of 3 flows:  
Average throughput: 1.25 Mbit/s  
95th percentile per-packet one-way delay: 352.227 ms  
Loss rate: 14.66%  
-- Flow 1:  
Average throughput: 0.76 Mbit/s  
95th percentile per-packet one-way delay: 349.917 ms  
Loss rate: 12.45%  
-- Flow 2:  
Average throughput: 0.55 Mbit/s  
95th percentile per-packet one-way delay: 353.817 ms  
Loss rate: 14.73%  
-- Flow 3:  
Average throughput: 0.39 Mbit/s  
95th percentile per-packet one-way delay: 355.082 ms  
Loss rate: 25.81%



### Run 3: Report of QUIC Cubic — Data Link

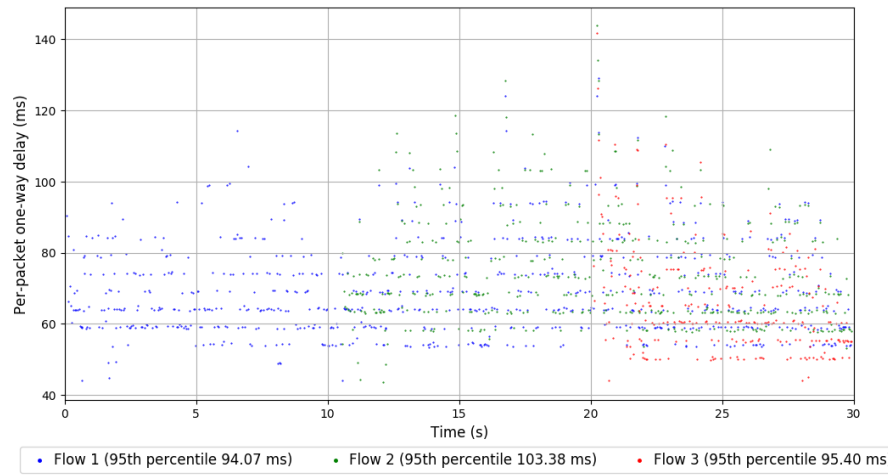
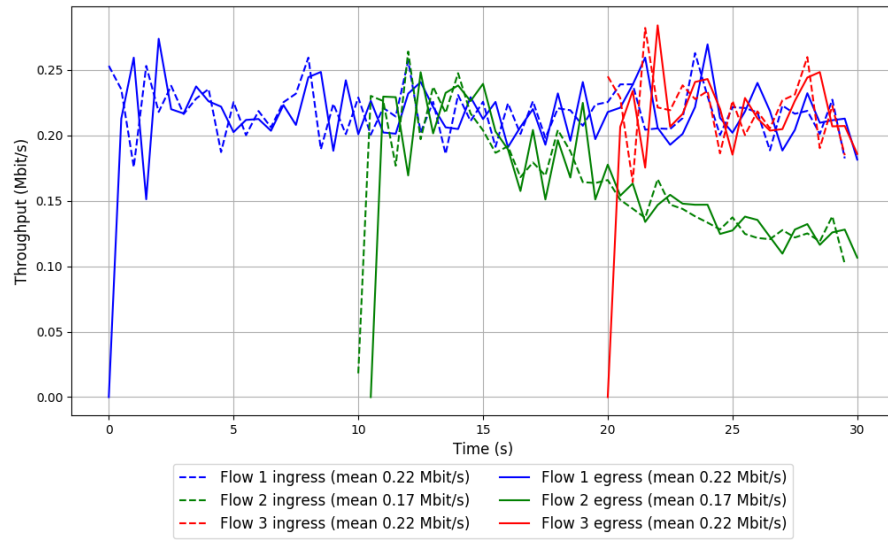


Run 1: Statistics of SCReAM

Start at: 2018-06-19 07:52:49  
End at: 2018-06-19 07:53:19  
Local clock offset: 3.435 ms  
Remote clock offset: -3.782 ms

# Below is generated by plot.py at 2018-06-19 08:32:20  
# Datalink statistics  
-- Total of 3 flows:  
Average throughput: 0.40 Mbit/s  
95th percentile per-packet one-way delay: 98.210 ms  
Loss rate: 0.34%  
-- Flow 1:  
Average throughput: 0.22 Mbit/s  
95th percentile per-packet one-way delay: 94.072 ms  
Loss rate: 0.25%  
-- Flow 2:  
Average throughput: 0.17 Mbit/s  
95th percentile per-packet one-way delay: 103.379 ms  
Loss rate: 0.26%  
-- Flow 3:  
Average throughput: 0.22 Mbit/s  
95th percentile per-packet one-way delay: 95.401 ms  
Loss rate: 0.71%

# Run 1: Report of SReAM — Data Link

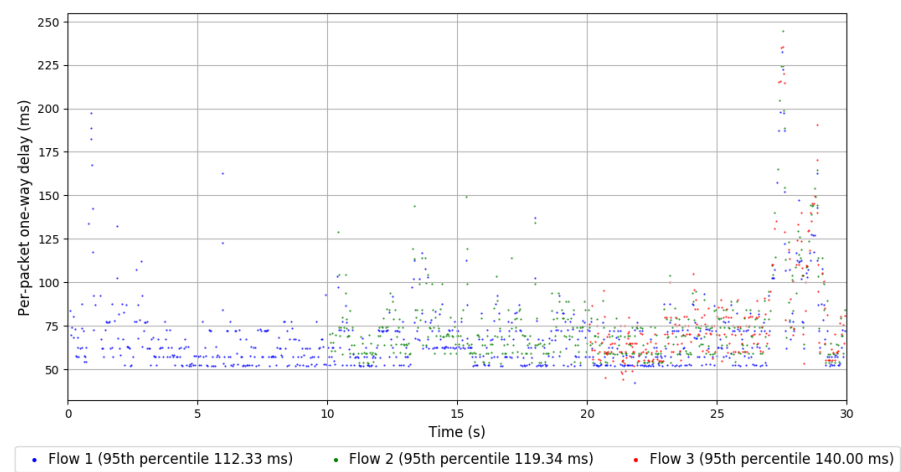
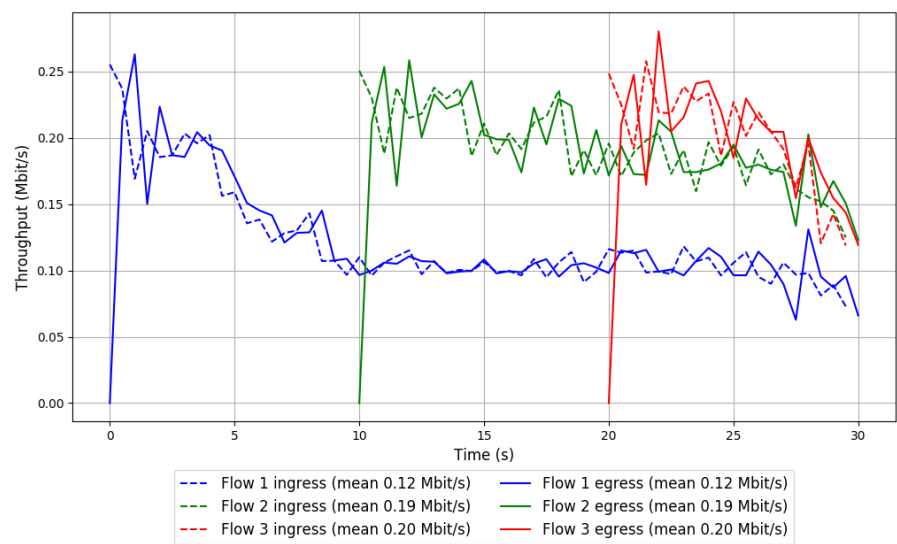


Run 2: Statistics of SCReAM

Start at: 2018-06-19 08:10:26  
End at: 2018-06-19 08:10:56  
Local clock offset: 2.224 ms  
Remote clock offset: -2.365 ms

# Below is generated by plot.py at 2018-06-19 08:32:20  
# Datalink statistics  
-- Total of 3 flows:  
Average throughput: 0.32 Mbit/s  
95th percentile per-packet one-way delay: 119.034 ms  
Loss rate: 0.29%  
-- Flow 1:  
Average throughput: 0.12 Mbit/s  
95th percentile per-packet one-way delay: 112.330 ms  
Loss rate: 0.18%  
-- Flow 2:  
Average throughput: 0.19 Mbit/s  
95th percentile per-packet one-way delay: 119.336 ms  
Loss rate: 0.29%  
-- Flow 3:  
Average throughput: 0.20 Mbit/s  
95th percentile per-packet one-way delay: 139.998 ms  
Loss rate: 0.50%

Run 2: Report of SReAM — Data Link

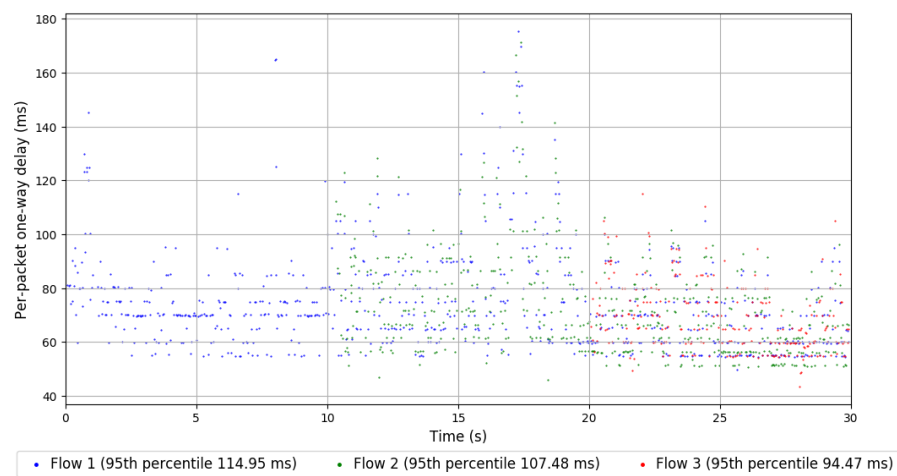
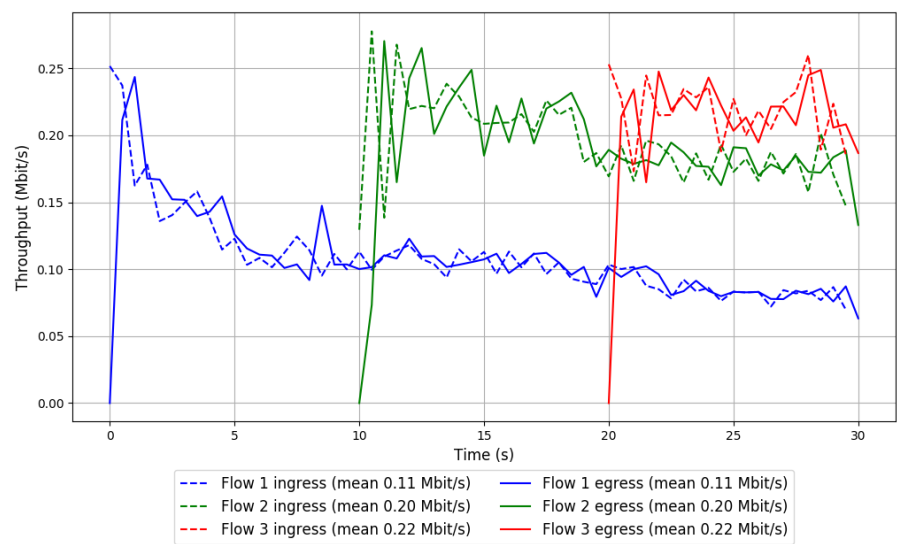


Run 3: Statistics of SCReAM

Start at: 2018-06-19 08:27:55  
End at: 2018-06-19 08:28:25  
Local clock offset: 1.198 ms  
Remote clock offset: -0.646 ms

# Below is generated by plot.py at 2018-06-19 08:32:20  
# Datalink statistics  
-- Total of 3 flows:  
Average throughput: 0.31 Mbit/s  
95th percentile per-packet one-way delay: 105.873 ms  
Loss rate: 0.38%  
-- Flow 1:  
Average throughput: 0.11 Mbit/s  
95th percentile per-packet one-way delay: 114.947 ms  
Loss rate: 0.20%  
-- Flow 2:  
Average throughput: 0.20 Mbit/s  
95th percentile per-packet one-way delay: 107.479 ms  
Loss rate: 0.36%  
-- Flow 3:  
Average throughput: 0.22 Mbit/s  
95th percentile per-packet one-way delay: 94.470 ms  
Loss rate: 0.71%

Run 3: Report of SReAM — Data Link



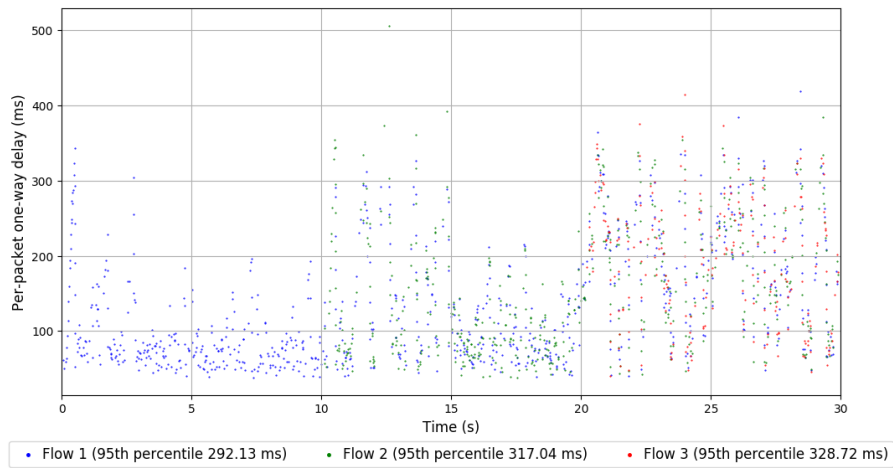
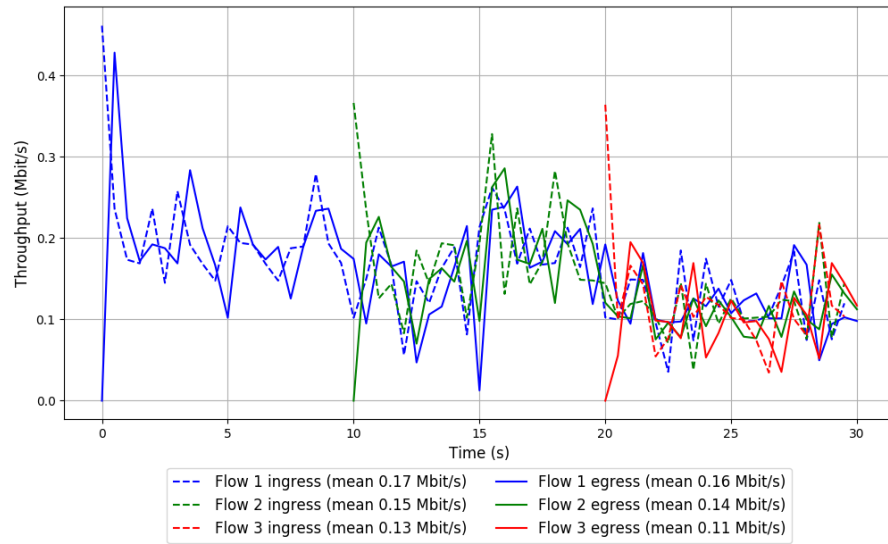
Run 1: Statistics of Sprout

Start at: 2018-06-19 07:47:16  
End at: 2018-06-19 07:47:46  
Local clock offset: 2.202 ms  
Remote clock offset: -3.024 ms

# Below is generated by plot.py at 2018-06-19 08:32:20  
# Datalink statistics  
-- Total of 3 flows:  
Average throughput: 0.29 Mbit/s  
95th percentile per-packet one-way delay: 307.226 ms  
Loss rate: 4.80%  
-- Flow 1:  
Average throughput: 0.16 Mbit/s  
95th percentile per-packet one-way delay: 292.128 ms  
Loss rate: 2.42%  
-- Flow 2:  
Average throughput: 0.14 Mbit/s  
95th percentile per-packet one-way delay: 317.036 ms  
Loss rate: 5.24%  
-- Flow 3:  
Average throughput: 0.11 Mbit/s  
95th percentile per-packet one-way delay: 328.724 ms  
Loss rate: 13.31%



## Run 1: Report of Sprout — Data Link



## Run 2: Statistics of Sprout

Start at: 2018-06-19 08:04:51

End at: 2018-06-19 08:05:21

Local clock offset: 4.069 ms

Remote clock offset: -6.03 ms

# Below is generated by plot.py at 2018-06-19 08:32:20

# Datalink statistics

-- Total of 3 flows:

Average throughput: 0.45 Mbit/s

95th percentile per-packet one-way delay: 217.551 ms

Loss rate: 1.38%

-- Flow 1:

Average throughput: 0.22 Mbit/s

95th percentile per-packet one-way delay: 182.347 ms

Loss rate: 1.43%

-- Flow 2:

Average throughput: 0.23 Mbit/s

95th percentile per-packet one-way delay: 225.496 ms

Loss rate: 1.02%

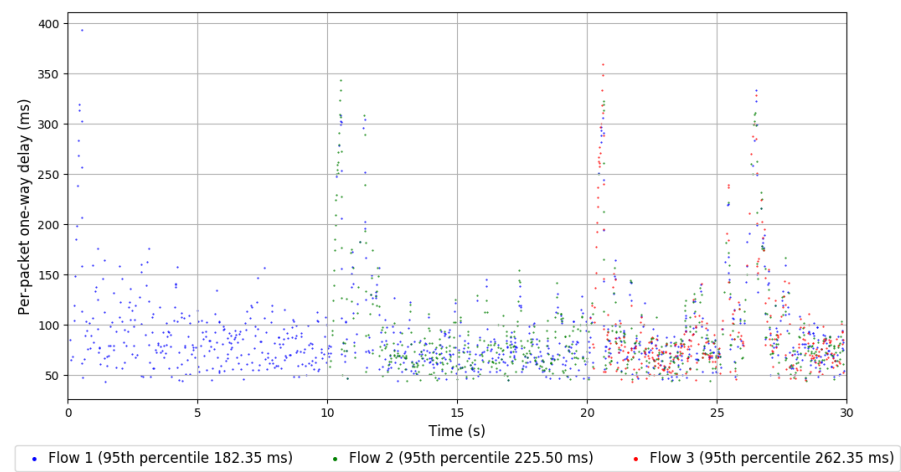
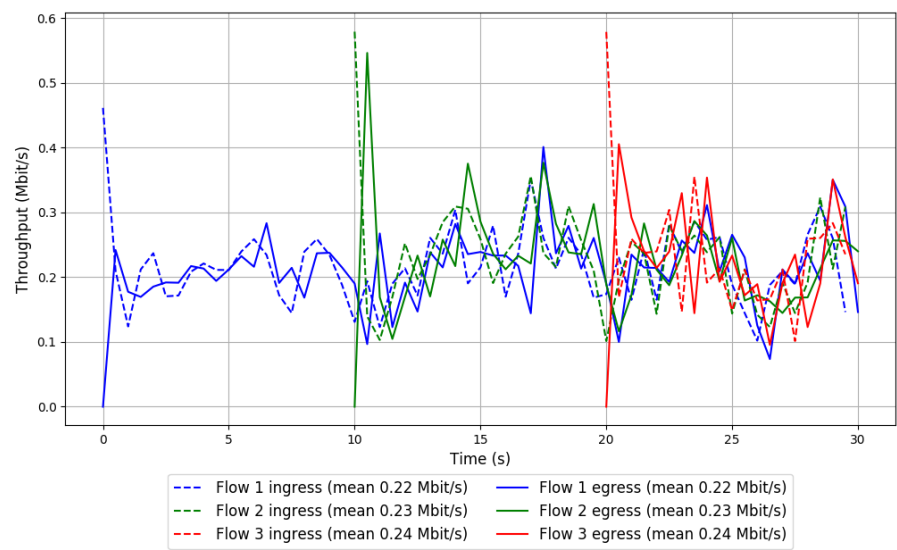
-- Flow 3:

Average throughput: 0.24 Mbit/s

95th percentile per-packet one-way delay: 262.352 ms

Loss rate: 1.97%

Run 2: Report of Sprout — Data Link

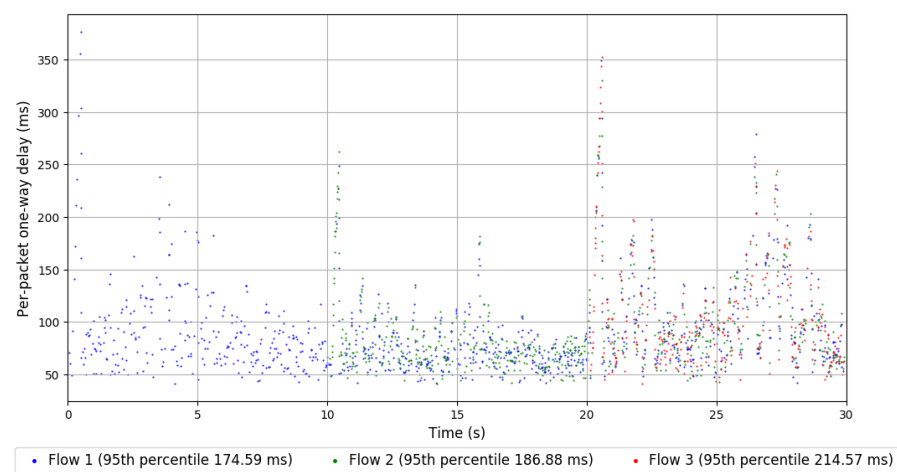
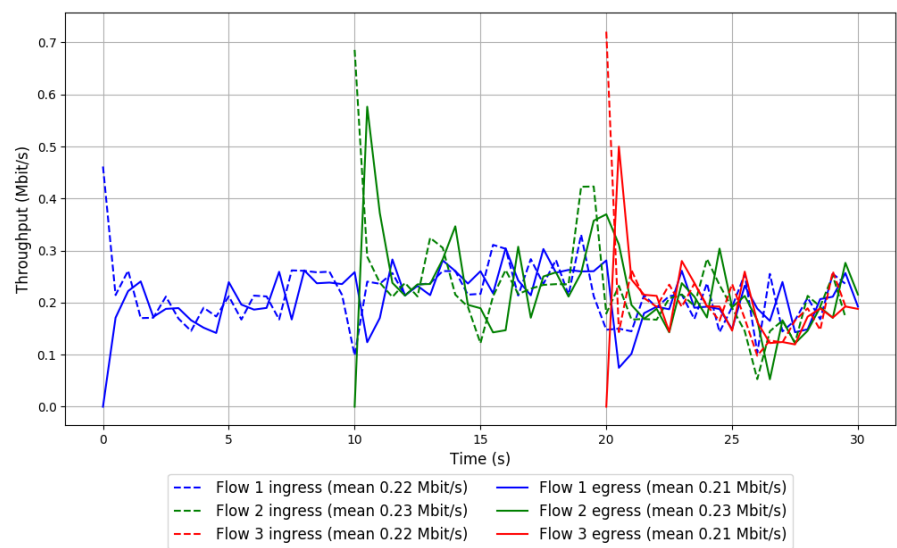


### Run 3: Statistics of Sprout

Start at: 2018-06-19 08:22:27  
End at: 2018-06-19 08:22:57  
Local clock offset: 2.85 ms  
Remote clock offset: -0.404 ms

```
# Below is generated by plot.py at 2018-06-19 08:32:20
# Datalink statistics
-- Total of 3 flows:
Average throughput: 0.44 Mbit/s
95th percentile per-packet one-way delay: 185.342 ms
Loss rate: 2.12%
-- Flow 1:
Average throughput: 0.21 Mbit/s
95th percentile per-packet one-way delay: 174.586 ms
Loss rate: 2.83%
-- Flow 2:
Average throughput: 0.23 Mbit/s
95th percentile per-packet one-way delay: 186.877 ms
Loss rate: 0.02%
-- Flow 3:
Average throughput: 0.21 Mbit/s
95th percentile per-packet one-way delay: 214.569 ms
Loss rate: 4.52%
```

Run 3: Report of Sprout — Data Link

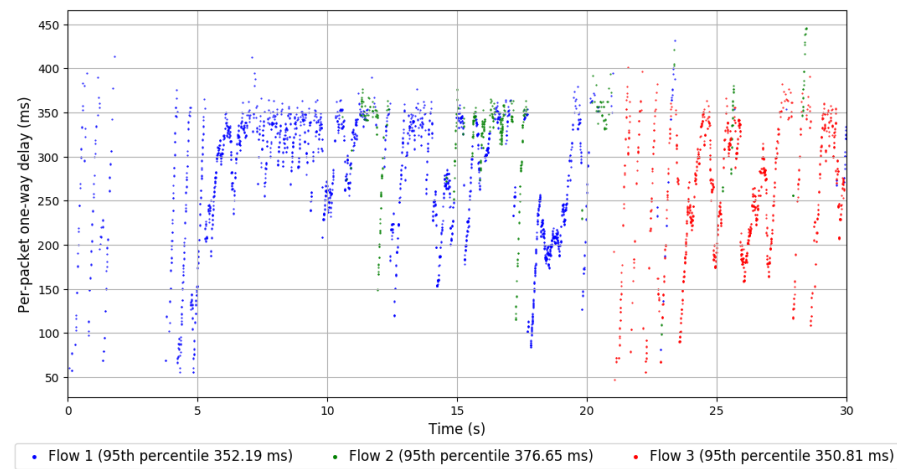
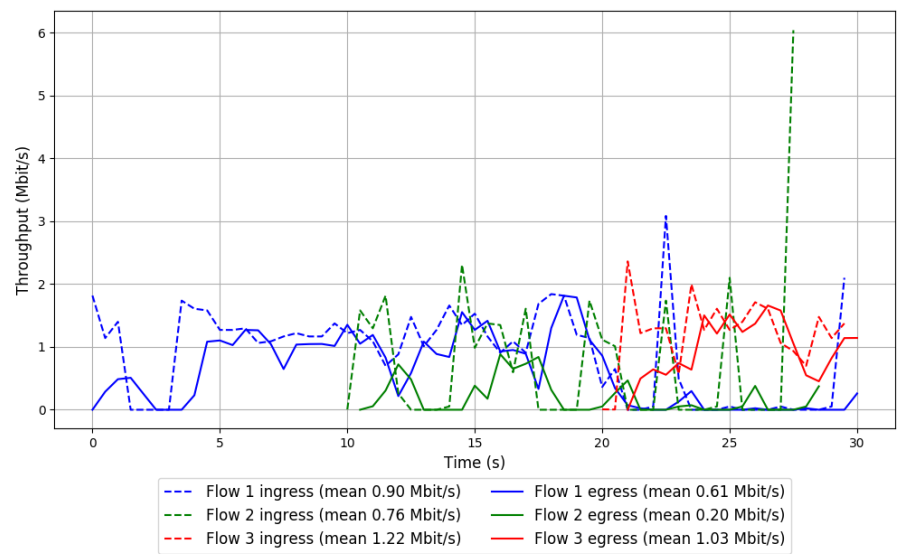


Run 1: Statistics of TaoVA-100x

Start at: 2018-06-19 07:45:05  
End at: 2018-06-19 07:45:35  
Local clock offset: 3.186 ms  
Remote clock offset: -3.555 ms

# Below is generated by plot.py at 2018-06-19 08:32:20  
# Datalink statistics  
-- Total of 3 flows:  
Average throughput: 1.04 Mbit/s  
95th percentile per-packet one-way delay: 355.376 ms  
Loss rate: 40.44%  
-- Flow 1:  
Average throughput: 0.61 Mbit/s  
95th percentile per-packet one-way delay: 352.188 ms  
Loss rate: 31.19%  
-- Flow 2:  
Average throughput: 0.20 Mbit/s  
95th percentile per-packet one-way delay: 376.650 ms  
Loss rate: 72.94%  
-- Flow 3:  
Average throughput: 1.03 Mbit/s  
95th percentile per-packet one-way delay: 350.806 ms  
Loss rate: 24.65%

Run 1: Report of TaoVA-100x — Data Link



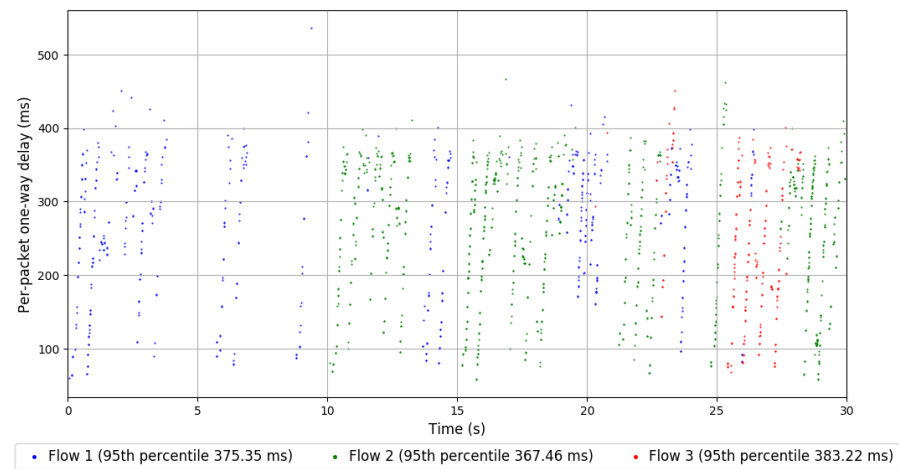
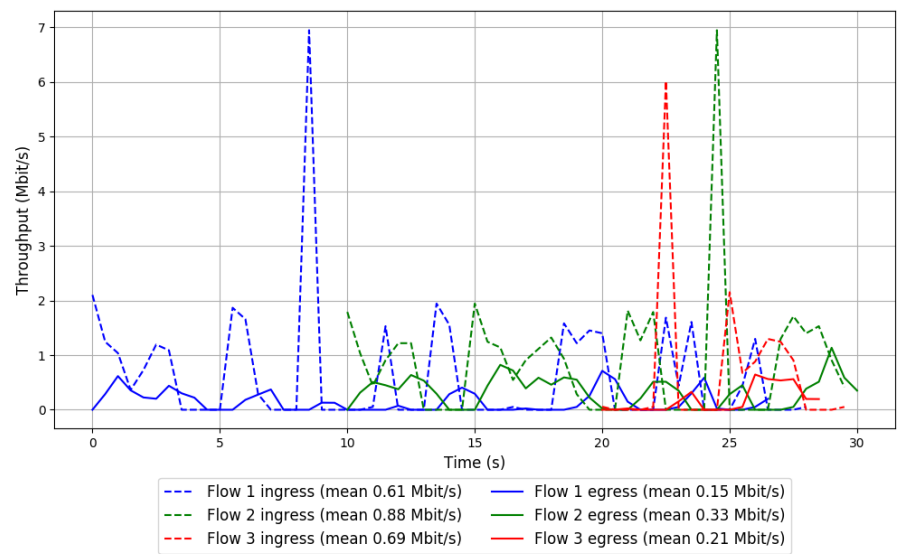
Run 2: Statistics of TaoVA-100x

Start at: 2018-06-19 08:02:40  
End at: 2018-06-19 08:03:10  
Local clock offset: 3.811 ms  
Remote clock offset: -5.237 ms

# Below is generated by plot.py at 2018-06-19 08:32:20  
# Datalink statistics  
-- Total of 3 flows:  
Average throughput: 0.41 Mbit/s  
95th percentile per-packet one-way delay: 373.609 ms  
Loss rate: 70.87%  
-- Flow 1:  
Average throughput: 0.15 Mbit/s  
95th percentile per-packet one-way delay: 375.354 ms  
Loss rate: 77.73%  
-- Flow 2:  
Average throughput: 0.33 Mbit/s  
95th percentile per-packet one-way delay: 367.459 ms  
Loss rate: 62.29%  
-- Flow 3:  
Average throughput: 0.21 Mbit/s  
95th percentile per-packet one-way delay: 383.216 ms  
Loss rate: 75.58%



Run 2: Report of TaoVA-100x — Data Link



Run 3: Statistics of TaoVA-100x

Start at: 2018-06-19 08:20:16

End at: 2018-06-19 08:20:46

Local clock offset: 2.501 ms

Remote clock offset: 0.091 ms

# Below is generated by plot.py at 2018-06-19 08:32:20

# Datalink statistics

-- Total of 3 flows:

Average throughput: 0.85 Mbit/s

95th percentile per-packet one-way delay: 356.436 ms

Loss rate: 38.97%

-- Flow 1:

Average throughput: 0.72 Mbit/s

95th percentile per-packet one-way delay: 355.226 ms

Loss rate: 29.17%

-- Flow 2:

Average throughput: 0.15 Mbit/s

95th percentile per-packet one-way delay: 361.965 ms

Loss rate: 68.50%

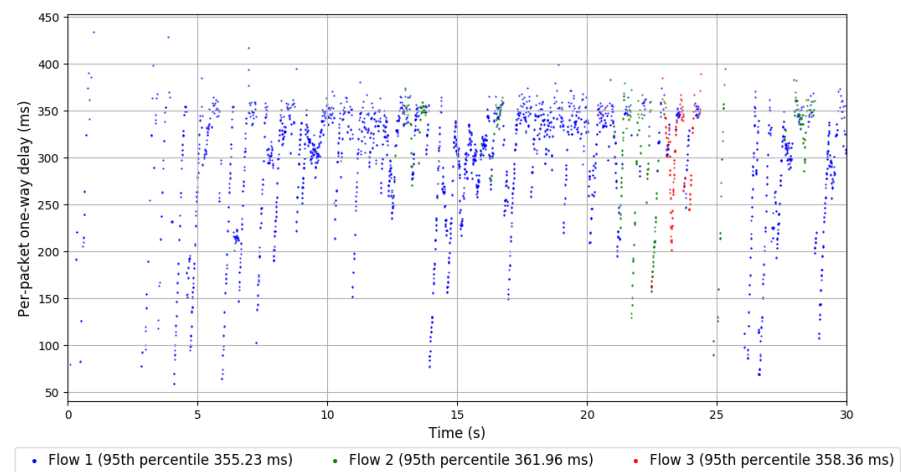
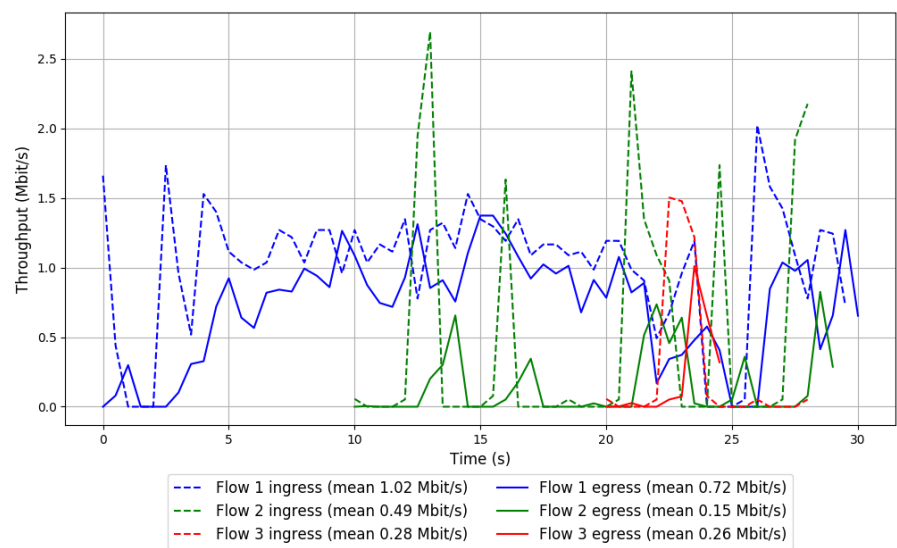
-- Flow 3:

Average throughput: 0.26 Mbit/s

95th percentile per-packet one-way delay: 358.360 ms

Loss rate: 52.41%

Run 3: Report of TaoVA-100x — Data Link

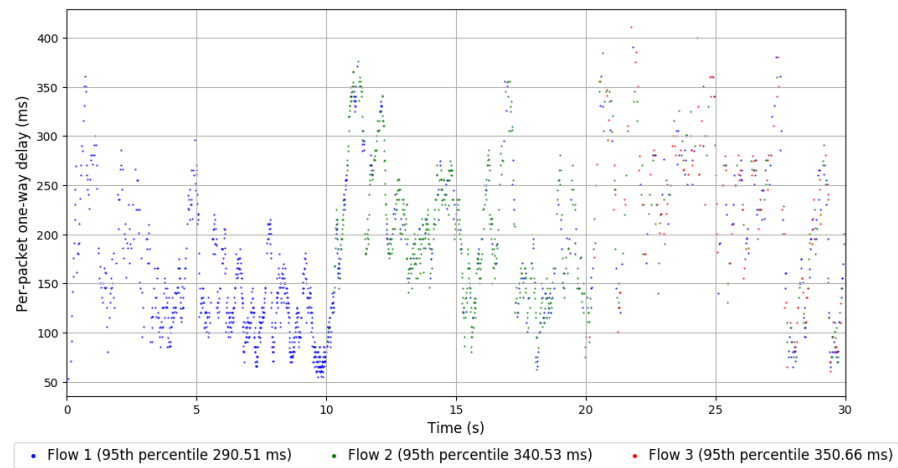
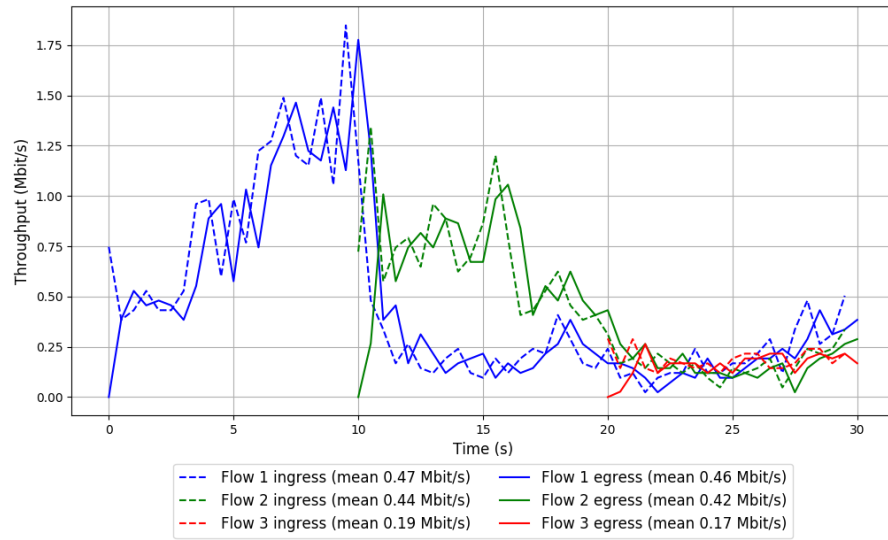


Run 1: Statistics of TCP Vegas

Start at: 2018-06-19 07:51:44  
End at: 2018-06-19 07:52:14  
Local clock offset: 3.603 ms  
Remote clock offset: -4.158 ms

# Below is generated by plot.py at 2018-06-19 08:32:20  
# Datalink statistics  
-- Total of 3 flows:  
Average throughput: 0.80 Mbit/s  
95th percentile per-packet one-way delay: 330.129 ms  
Loss rate: 3.27%  
-- Flow 1:  
Average throughput: 0.46 Mbit/s  
95th percentile per-packet one-way delay: 290.510 ms  
Loss rate: 1.97%  
-- Flow 2:  
Average throughput: 0.42 Mbit/s  
95th percentile per-packet one-way delay: 340.527 ms  
Loss rate: 3.97%  
-- Flow 3:  
Average throughput: 0.17 Mbit/s  
95th percentile per-packet one-way delay: 350.663 ms  
Loss rate: 9.67%

## Run 1: Report of TCP Vegas — Data Link

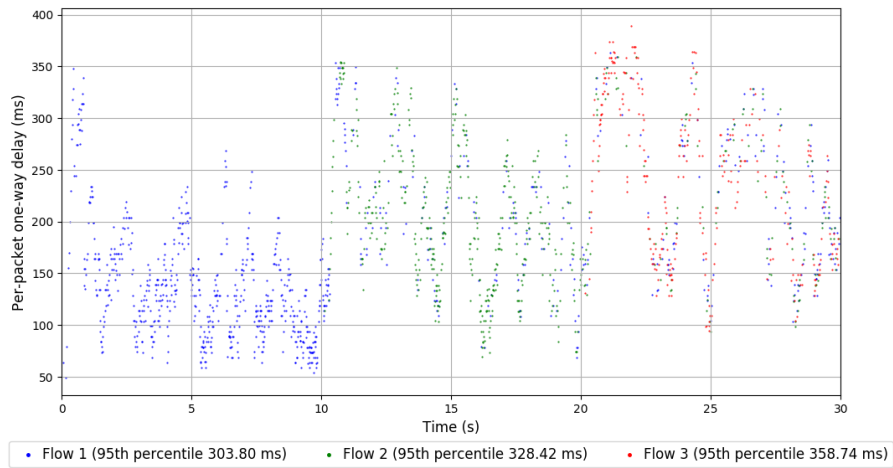
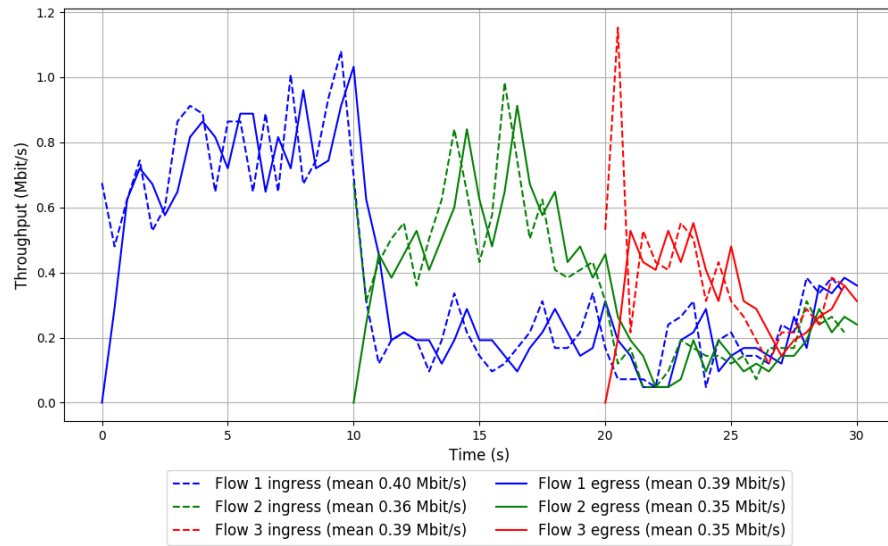


Run 2: Statistics of TCP Vegas

Start at: 2018-06-19 08:09:14  
End at: 2018-06-19 08:09:44  
Local clock offset: 1.1 ms  
Remote clock offset: -2.597 ms

# Below is generated by plot.py at 2018-06-19 08:32:20  
# Datalink statistics  
-- Total of 3 flows:  
Average throughput: 0.74 Mbit/s  
95th percentile per-packet one-way delay: 328.817 ms  
Loss rate: 3.04%  
-- Flow 1:  
Average throughput: 0.39 Mbit/s  
95th percentile per-packet one-way delay: 303.802 ms  
Loss rate: 1.11%  
-- Flow 2:  
Average throughput: 0.35 Mbit/s  
95th percentile per-packet one-way delay: 328.418 ms  
Loss rate: 2.36%  
-- Flow 3:  
Average throughput: 0.35 Mbit/s  
95th percentile per-packet one-way delay: 358.740 ms  
Loss rate: 10.34%

## Run 2: Report of TCP Vegas — Data Link



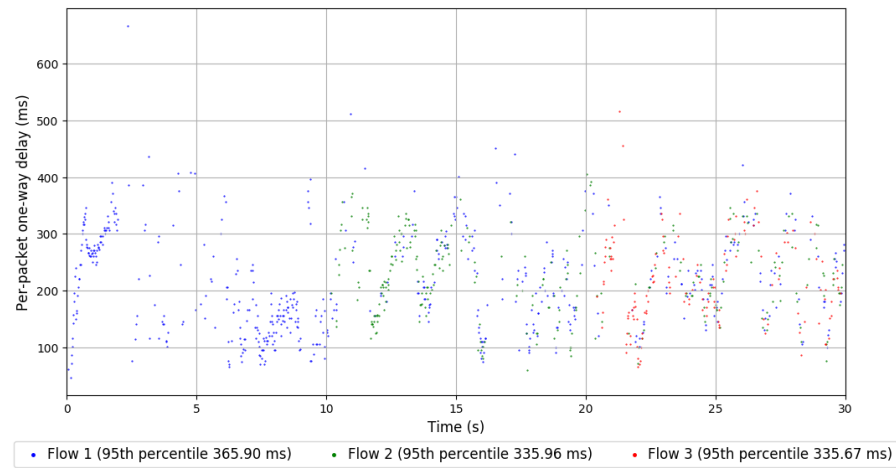
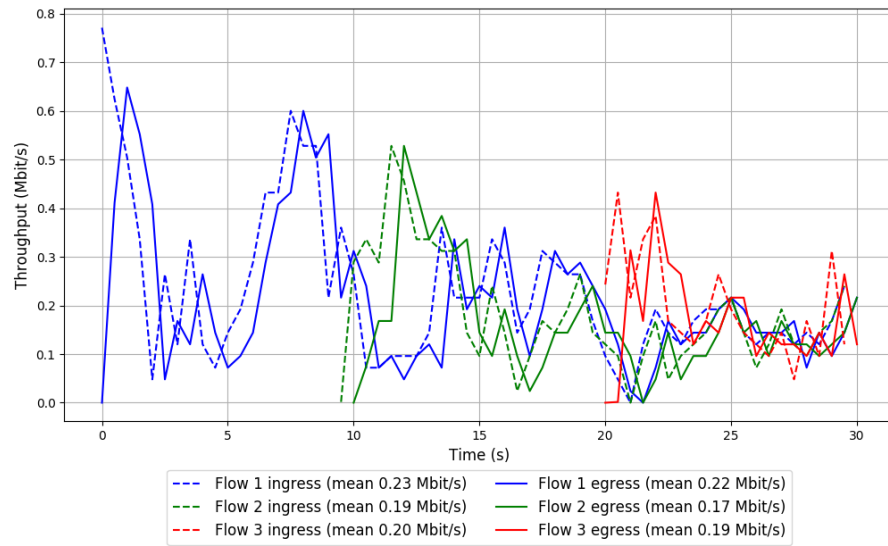
Run 3: Statistics of TCP Vegas

Start at: 2018-06-19 08:26:49  
End at: 2018-06-19 08:27:19  
Local clock offset: 2.164 ms  
Remote clock offset: -1.657 ms

# Below is generated by plot.py at 2018-06-19 08:32:20  
# Datalink statistics  
-- Total of 3 flows:  
Average throughput: 0.39 Mbit/s  
95th percentile per-packet one-way delay: 346.422 ms  
Loss rate: 8.38%  
-- Flow 1:  
Average throughput: 0.22 Mbit/s  
95th percentile per-packet one-way delay: 365.896 ms  
Loss rate: 6.76%  
-- Flow 2:  
Average throughput: 0.17 Mbit/s  
95th percentile per-packet one-way delay: 335.957 ms  
Loss rate: 10.64%  
-- Flow 3:  
Average throughput: 0.19 Mbit/s  
95th percentile per-packet one-way delay: 335.668 ms  
Loss rate: 9.81%



### Run 3: Report of TCP Vegas — Data Link

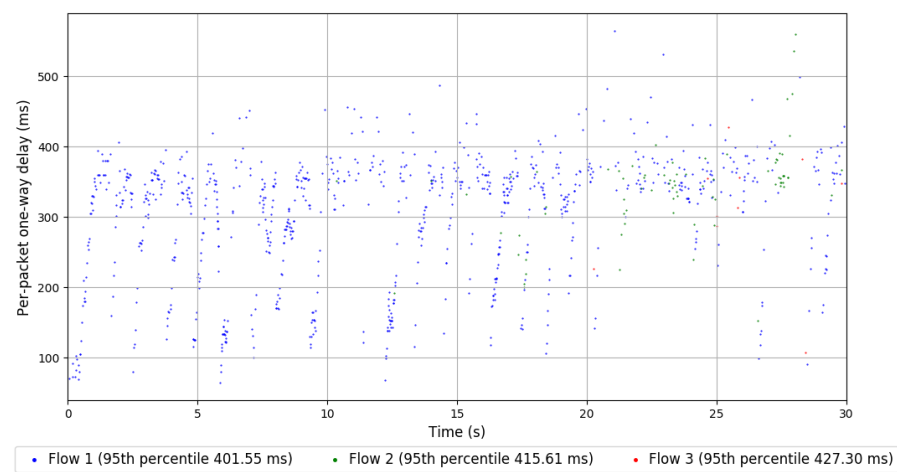
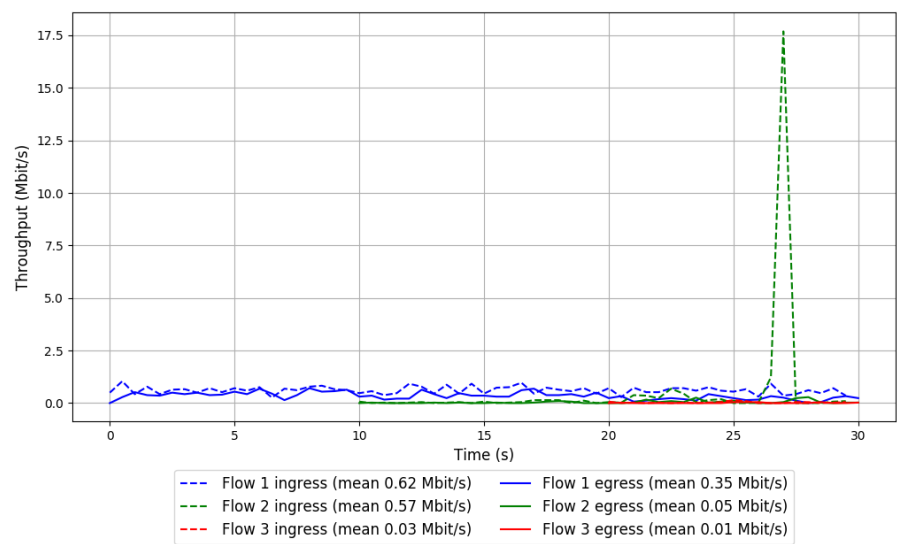


Run 1: Statistics of Verus

Start at: 2018-06-19 07:48:22  
End at: 2018-06-19 07:48:52  
Local clock offset: 1.213 ms  
Remote clock offset: -3.828 ms

# Below is generated by plot.py at 2018-06-19 08:32:20  
# Datalink statistics  
-- Total of 3 flows:  
Average throughput: 0.38 Mbit/s  
95th percentile per-packet one-way delay: 403.443 ms  
Loss rate: 61.86%  
-- Flow 1:  
Average throughput: 0.35 Mbit/s  
95th percentile per-packet one-way delay: 401.545 ms  
Loss rate: 43.60%  
-- Flow 2:  
Average throughput: 0.05 Mbit/s  
95th percentile per-packet one-way delay: 415.605 ms  
Loss rate: 91.73%  
-- Flow 3:  
Average throughput: 0.01 Mbit/s  
95th percentile per-packet one-way delay: 427.297 ms  
Loss rate: 61.54%

Run 1: Report of Verus — Data Link

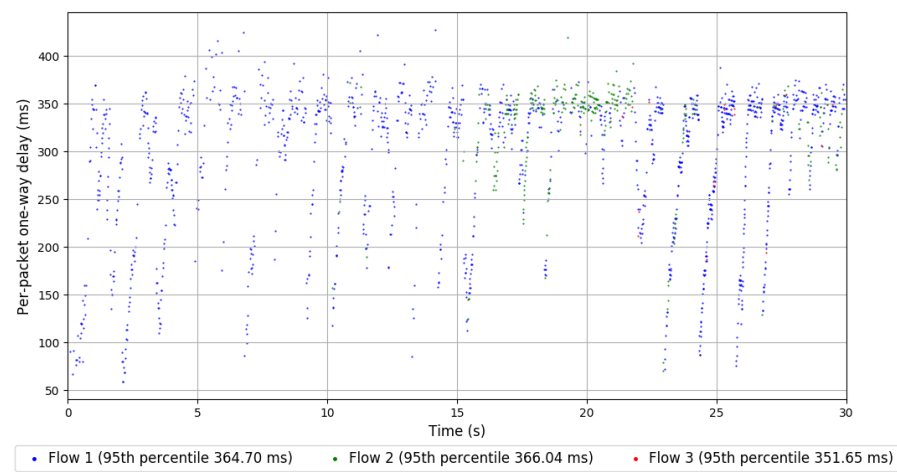
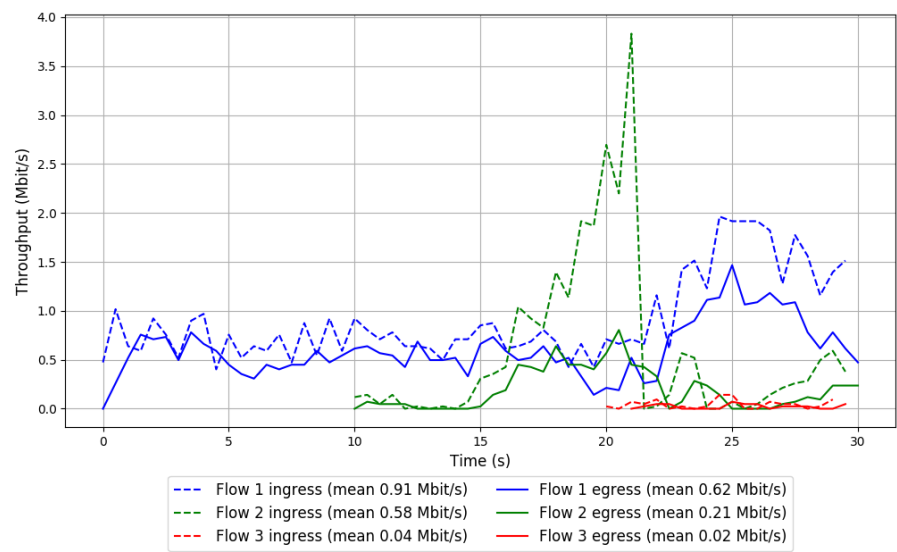


Run 2: Statistics of Verus

Start at: 2018-06-19 08:05:57  
End at: 2018-06-19 08:06:27  
Local clock offset: 0.543 ms  
Remote clock offset: -3.841 ms

# Below is generated by plot.py at 2018-06-19 08:32:20  
# Datalink statistics  
-- Total of 3 flows:  
Average throughput: 0.76 Mbit/s  
95th percentile per-packet one-way delay: 364.841 ms  
Loss rate: 42.26%  
-- Flow 1:  
Average throughput: 0.62 Mbit/s  
95th percentile per-packet one-way delay: 364.703 ms  
Loss rate: 32.36%  
-- Flow 2:  
Average throughput: 0.21 Mbit/s  
95th percentile per-packet one-way delay: 366.039 ms  
Loss rate: 65.07%  
-- Flow 3:  
Average throughput: 0.02 Mbit/s  
95th percentile per-packet one-way delay: 351.655 ms  
Loss rate: 52.78%

Run 2: Report of Verus — Data Link

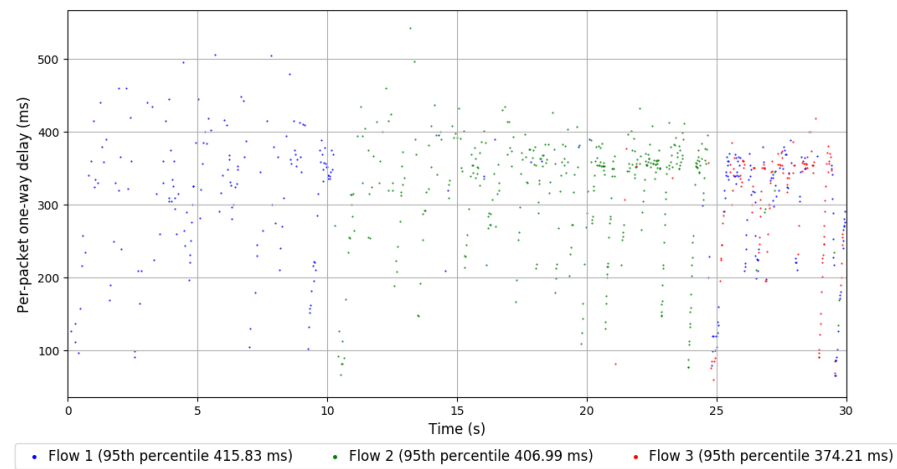
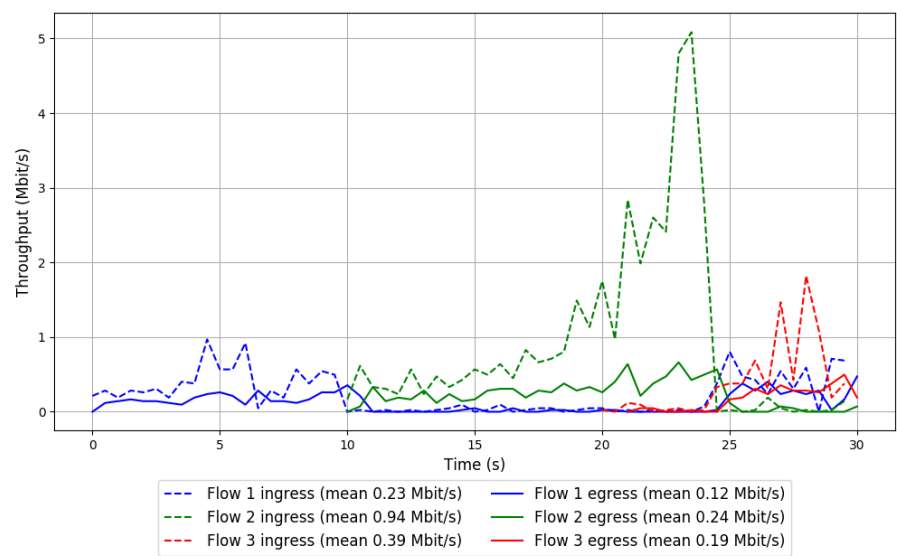


Run 3: Statistics of Verus

Start at: 2018-06-19 08:23:33  
End at: 2018-06-19 08:24:03  
Local clock offset: 0.342 ms  
Remote clock offset: -1.044 ms

# Below is generated by plot.py at 2018-06-19 08:32:20  
# Datalink statistics  
-- Total of 3 flows:  
Average throughput: 0.33 Mbit/s  
95th percentile per-packet one-way delay: 408.028 ms  
Loss rate: 66.63%  
-- Flow 1:  
Average throughput: 0.12 Mbit/s  
95th percentile per-packet one-way delay: 415.835 ms  
Loss rate: 49.07%  
-- Flow 2:  
Average throughput: 0.24 Mbit/s  
95th percentile per-packet one-way delay: 406.985 ms  
Loss rate: 75.00%  
-- Flow 3:  
Average throughput: 0.19 Mbit/s  
95th percentile per-packet one-way delay: 374.210 ms  
Loss rate: 58.05%

Run 3: Report of Verus — Data Link



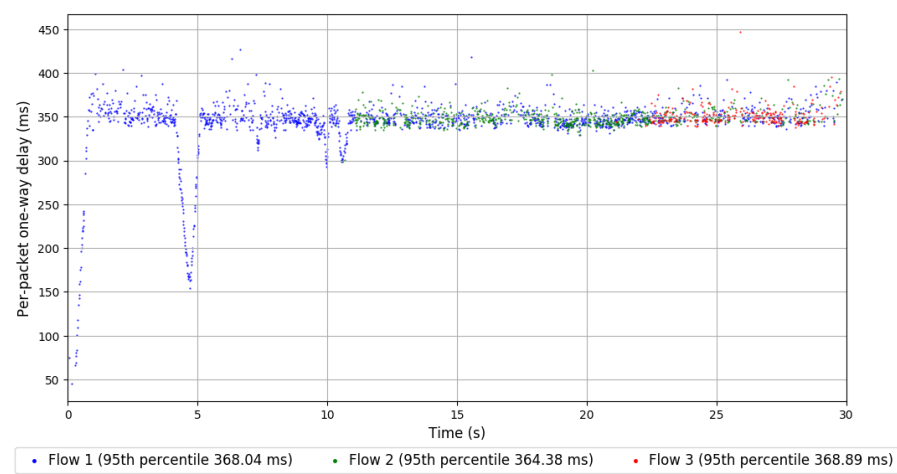
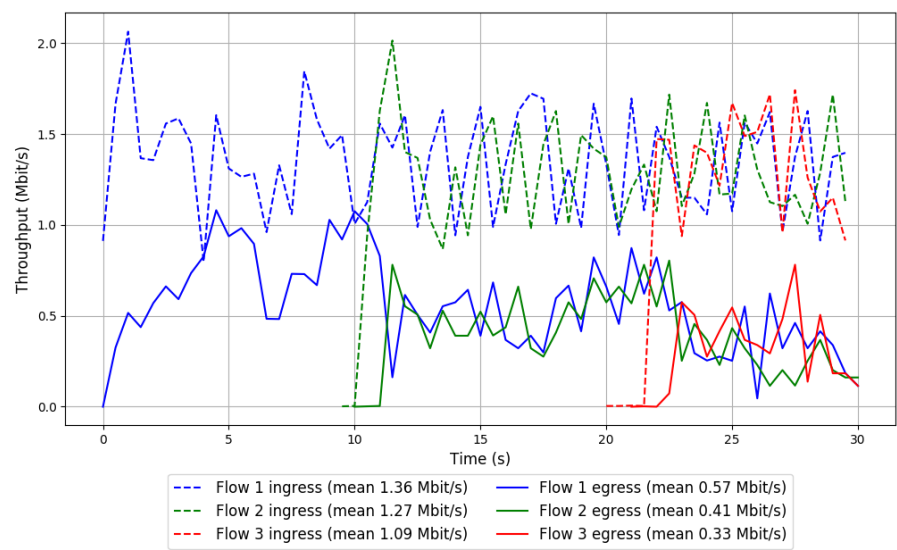
Run 1: Statistics of PCC-Vivace

Start at: 2018-06-19 07:46:11  
End at: 2018-06-19 07:46:41  
Local clock offset: 2.037 ms  
Remote clock offset: -3.245 ms

# Below is generated by plot.py at 2018-06-19 08:32:20  
# Datalink statistics  
-- Total of 3 flows:  
Average throughput: 0.94 Mbit/s  
95th percentile per-packet one-way delay: 367.436 ms  
Loss rate: 63.63%  
-- Flow 1:  
Average throughput: 0.57 Mbit/s  
95th percentile per-packet one-way delay: 368.036 ms  
Loss rate: 58.23%  
-- Flow 2:  
Average throughput: 0.41 Mbit/s  
95th percentile per-packet one-way delay: 364.385 ms  
Loss rate: 68.30%  
-- Flow 3:  
Average throughput: 0.33 Mbit/s  
95th percentile per-packet one-way delay: 368.886 ms  
Loss rate: 73.04%



Run 1: Report of PCC-Vivace — Data Link

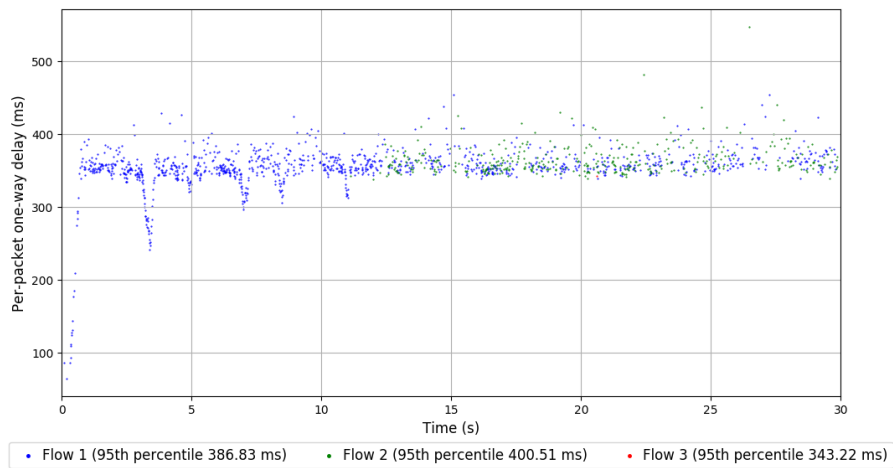
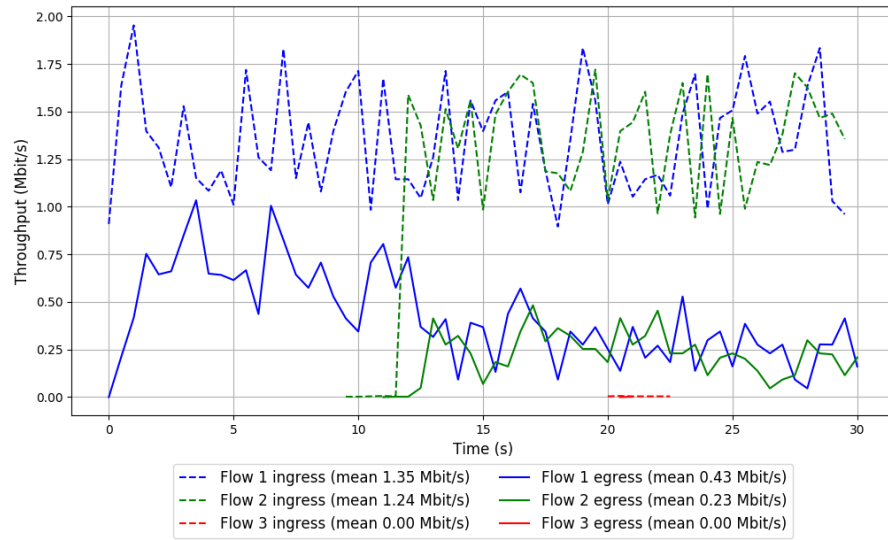


Run 2: Statistics of PCC-Vivace

Start at: 2018-06-19 08:03:45  
End at: 2018-06-19 08:04:15  
Local clock offset: 4.044 ms  
Remote clock offset: -6.399 ms

# Below is generated by plot.py at 2018-06-19 08:32:20  
# Datalink statistics  
-- Total of 3 flows:  
Average throughput: 0.58 Mbit/s  
95th percentile per-packet one-way delay: 391.043 ms  
Loss rate: 73.66%  
-- Flow 1:  
Average throughput: 0.43 Mbit/s  
95th percentile per-packet one-way delay: 386.835 ms  
Loss rate: 68.26%  
-- Flow 2:  
Average throughput: 0.23 Mbit/s  
95th percentile per-packet one-way delay: 400.506 ms  
Loss rate: 82.52%  
-- Flow 3:  
Average throughput: 0.00 Mbit/s  
95th percentile per-packet one-way delay: 343.216 ms  
Loss rate: 92.31%

## Run 2: Report of PCC-Vivace — Data Link



Run 3: Statistics of PCC-Vivace

Start at: 2018-06-19 08:21:22

End at: 2018-06-19 08:21:52

Local clock offset: 2.607 ms

Remote clock offset: 0.354 ms

# Below is generated by plot.py at 2018-06-19 08:32:20

# Datalink statistics

-- Total of 3 flows:

Average throughput: 0.45 Mbit/s

95th percentile per-packet one-way delay: 405.611 ms

Loss rate: 82.34%

-- Flow 1:

Average throughput: 0.29 Mbit/s

95th percentile per-packet one-way delay: 400.359 ms

Loss rate: 78.95%

-- Flow 2:

Average throughput: 0.19 Mbit/s

95th percentile per-packet one-way delay: 416.628 ms

Loss rate: 85.68%

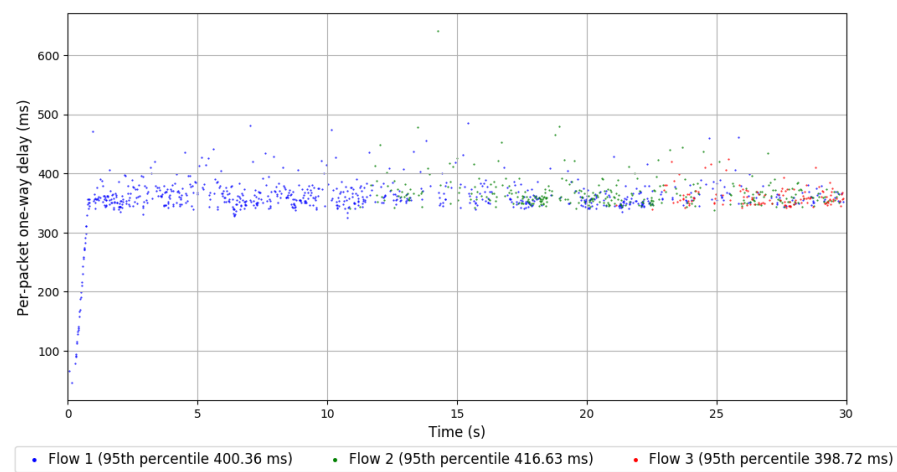
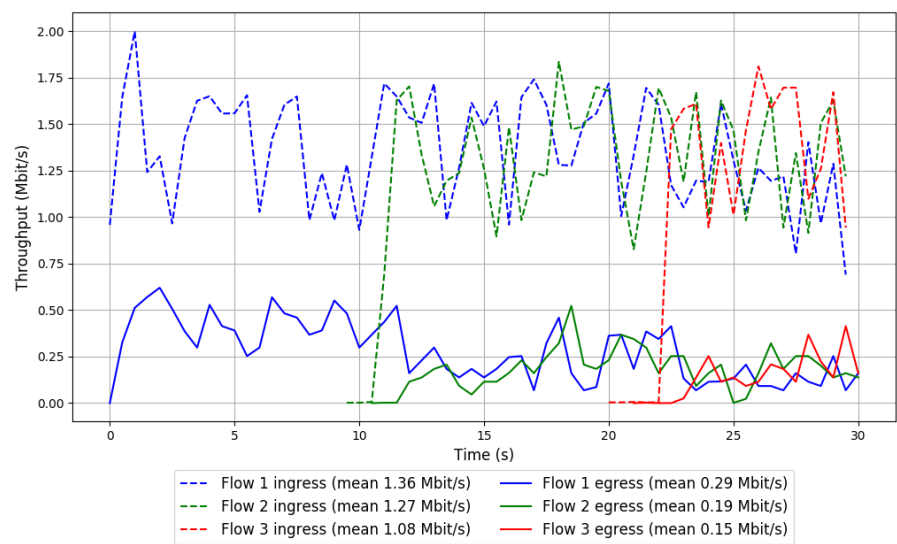
-- Flow 3:

Average throughput: 0.15 Mbit/s

95th percentile per-packet one-way delay: 398.722 ms

Loss rate: 87.36%

Run 3: Report of PCC-Vivace — Data Link

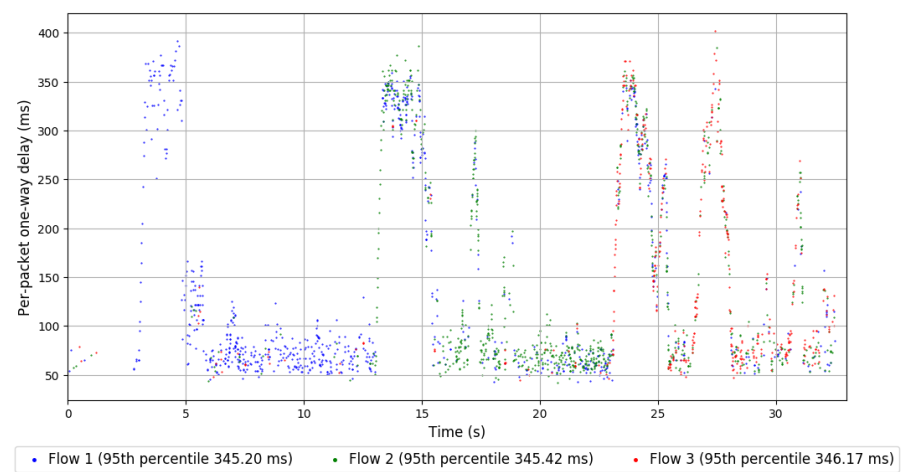
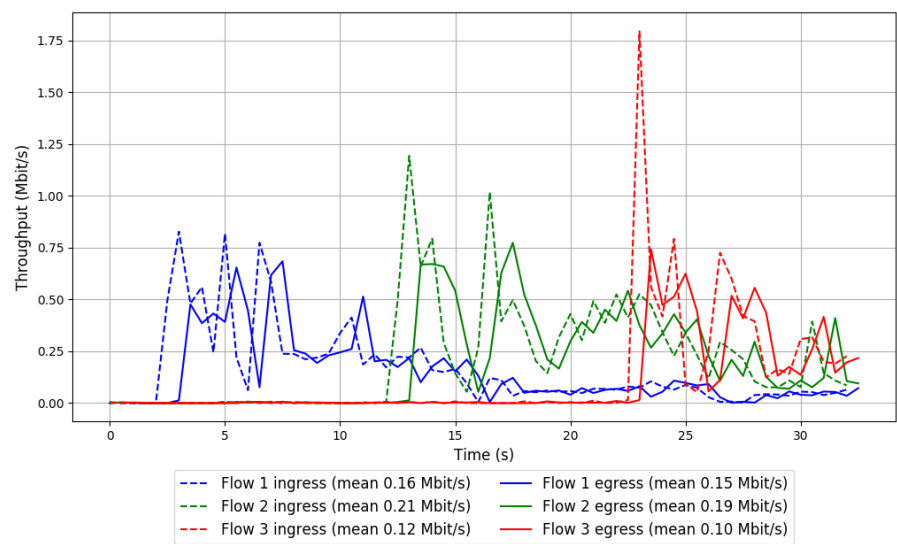


Run 1: Statistics of WebRTC media

Start at: 2018-06-19 07:53:54  
End at: 2018-06-19 07:54:24  
Local clock offset: 4.346 ms  
Remote clock offset: -4.978 ms

# Below is generated by plot.py at 2018-06-19 08:32:20  
# Datalink statistics  
-- Total of 3 flows:  
Average throughput: 0.45 Mbit/s  
95th percentile per-packet one-way delay: 345.532 ms  
Loss rate: 10.11%  
-- Flow 1:  
Average throughput: 0.15 Mbit/s  
95th percentile per-packet one-way delay: 345.200 ms  
Loss rate: 9.08%  
-- Flow 2:  
Average throughput: 0.19 Mbit/s  
95th percentile per-packet one-way delay: 345.423 ms  
Loss rate: 7.88%  
-- Flow 3:  
Average throughput: 0.10 Mbit/s  
95th percentile per-packet one-way delay: 346.165 ms  
Loss rate: 15.35%

Run 1: Report of WebRTC media — Data Link



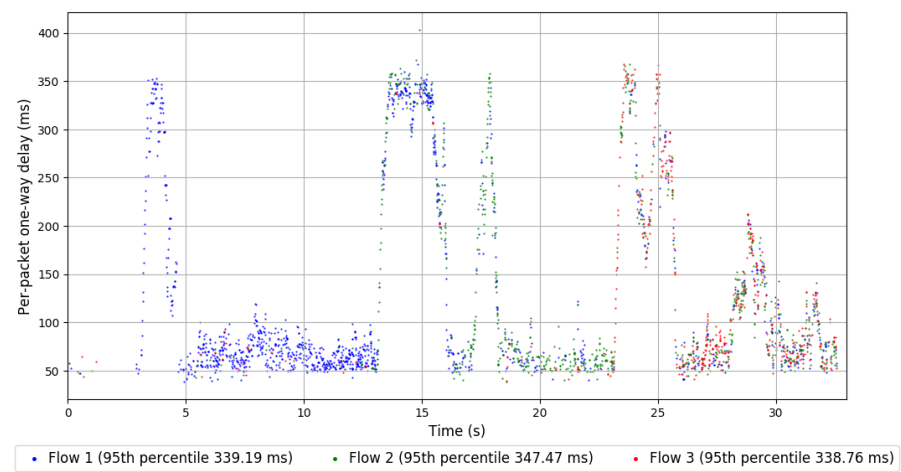
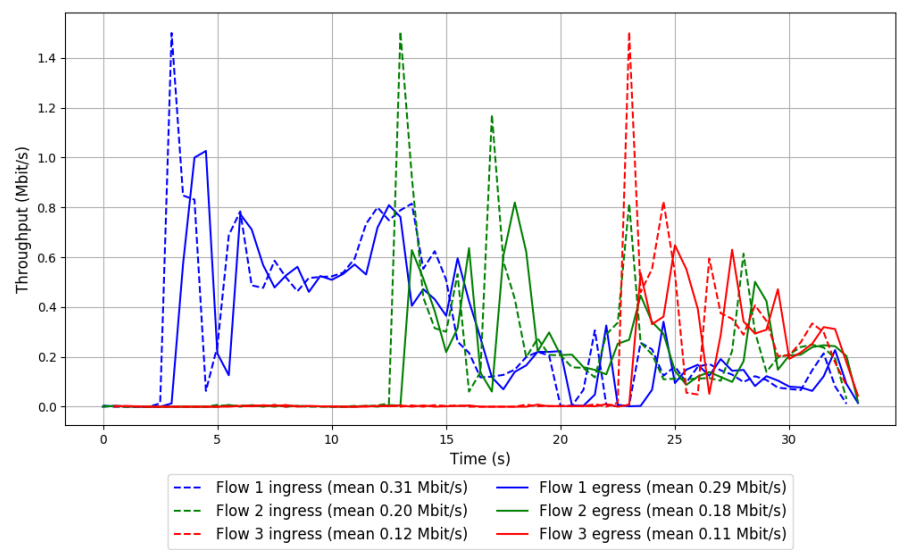
Run 2: Statistics of WebRTC media

Start at: 2018-06-19 08:11:31  
End at: 2018-06-19 08:12:01  
Local clock offset: 0.498 ms  
Remote clock offset: -1.887 ms

# Below is generated by plot.py at 2018-06-19 08:32:20  
# Datalink statistics  
-- Total of 3 flows:  
Average throughput: 0.57 Mbit/s  
95th percentile per-packet one-way delay: 341.788 ms  
Loss rate: 10.23%  
-- Flow 1:  
Average throughput: 0.29 Mbit/s  
95th percentile per-packet one-way delay: 339.192 ms  
Loss rate: 6.57%  
-- Flow 2:  
Average throughput: 0.18 Mbit/s  
95th percentile per-packet one-way delay: 347.466 ms  
Loss rate: 13.01%  
-- Flow 3:  
Average throughput: 0.11 Mbit/s  
95th percentile per-packet one-way delay: 338.763 ms  
Loss rate: 14.99%



Run 2: Report of WebRTC media — Data Link



Run 3: Statistics of WebRTC media

Start at: 2018-06-19 08:29:00  
End at: 2018-06-19 08:29:30  
Local clock offset: 0.313 ms  
Remote clock offset: -0.621 ms

# Below is generated by plot.py at 2018-06-19 08:32:20  
# Datalink statistics  
-- Total of 3 flows:  
Average throughput: 0.39 Mbit/s  
95th percentile per-packet one-way delay: 354.385 ms  
Loss rate: 17.70%  
-- Flow 1:  
Average throughput: 0.16 Mbit/s  
95th percentile per-packet one-way delay: 354.126 ms  
Loss rate: 15.91%  
-- Flow 2:  
Average throughput: 0.12 Mbit/s  
95th percentile per-packet one-way delay: 358.355 ms  
Loss rate: 21.87%  
-- Flow 3:  
Average throughput: 0.11 Mbit/s  
95th percentile per-packet one-way delay: 349.601 ms  
Loss rate: 15.58%

Run 3: Report of WebRTC media — Data Link

