

## Pantheon Report

Generated at 2017-09-22 15:20:21 (UTC).

Data path: China ppp0 (*remote*) → AWS Korea Ethernet (*local*).

Repeated the test of 14 congestion control schemes 3 times.

Each test lasted for 30 seconds running 3 flows with 10-second interval between two flows.

Increased UDP receive buffer to 16 MB (default) and 32 MB (max).

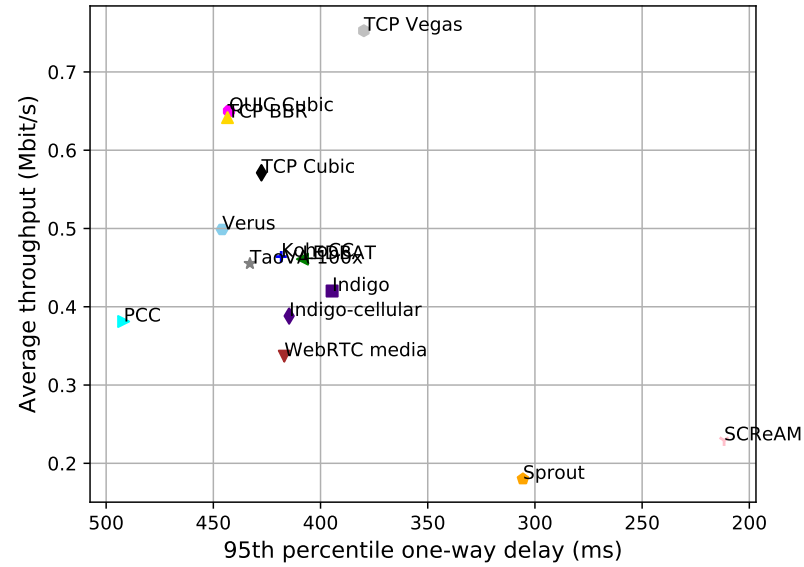
Tested BBR with qdisc of Fair Queuing (**fq**), and other schemes with the default Linux qdisc (**pfifo\_fast**).

NTP offsets were measured against `ntp.nict.jp` and have been applied to correct the timestamps in logs.

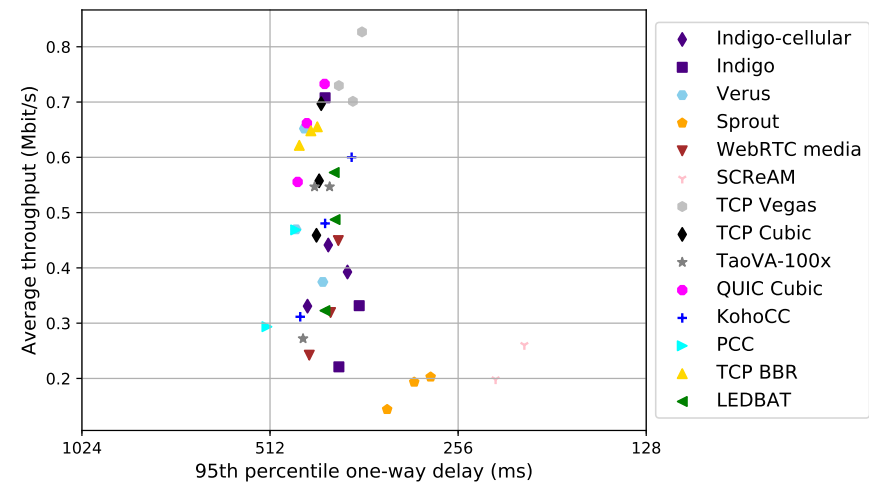
Git summary:

```
branch: indigos @ 46c7c812d4acb71eea4f5fb0b03b3657cea3062f
third_party/calibrated_koho @ 3cb73c0d1c0322cdfae446ea37a522e53227db50
  M datagrump/sender.cc
third_party/genericCC @ f7ca42f251bf49b432bb71de6d13fa903515c366
third_party/indigo @ b19f3730105f9aa95452552af924e3719b03cc55
third_party/indigo-cellular @ aee99e8eb842cb053f8c9a80e28cd256a930bbc2
third_party/indigo-no-calib @ 7224f2202e8a044d8306fa0b983ad84360c53d89
third_party/indigo-no-cwnd @ 3e58442c04028a11d7b02456e137604633ba2d6c
third_party/indigo-no-delivery-rate @ 57caa40858b964906edff4876d5a7e5bfff666c5
third_party/indigo-no-queuing-delay @ 03455460fd1a8ffbdad86fabb936fdca204b80db
third_party/indigo-no-send-rate @ b39dfa6b2c5f19cb7cd89626cb4f5bb81f9fecda
third_party/koho_cc @ f0f2e693303aee82ea808e6928eac4f1083a6681
  M datagrump/sender.cc
third_party/libutp @ b3465b942e2826f2b179eaab4a906ce6bb7cf3cf
third_party/pantheon-tunnel @ baf443516dea3eeddeccaf9b916cc313273ca4f4
third_party/pcc @ 1afc958fa0d66d18b623c091a55fec872b4981e1
  M receiver/src/buffer.h
  M receiver/src/core.cpp
  M sender/src/buffer.h
  M sender/src/core.cpp
third_party/proto-quic @ 77961f1a82733a86b42f1bc8143ebc978f3cff42
third_party/scream @ c3370fd7bd17265a79aeb34e4016ad23f5965885
third_party/sourdough @ f1a14bffe749737437f61b1eaeeb30b267cde681
third_party/sprout @ 6f2efe6e088d91066a9f023df375eee2665089ce
  M src/examples/cellsim.cc
  M src/examples/sproutbt2.cc
  M src/network/sproutconn.cc
third_party/verus @ d4b447ea74c6c60a261149af2629562939f9a494
  M src/verus.hpp
  M tools/plot.py
third_party/webrtc @ a488197ddd041ace68a42849b2540ad834825f42
```

test from China ppp0 to AWS Korea Ethernet, 3 runs of 30s each per scheme  
3 flows with 10s interval between flows (mean of all runs by scheme)



test from China ppp0 to AWS Korea Ethernet, 3 runs of 30s each per scheme  
3 flows with 10s interval between flows



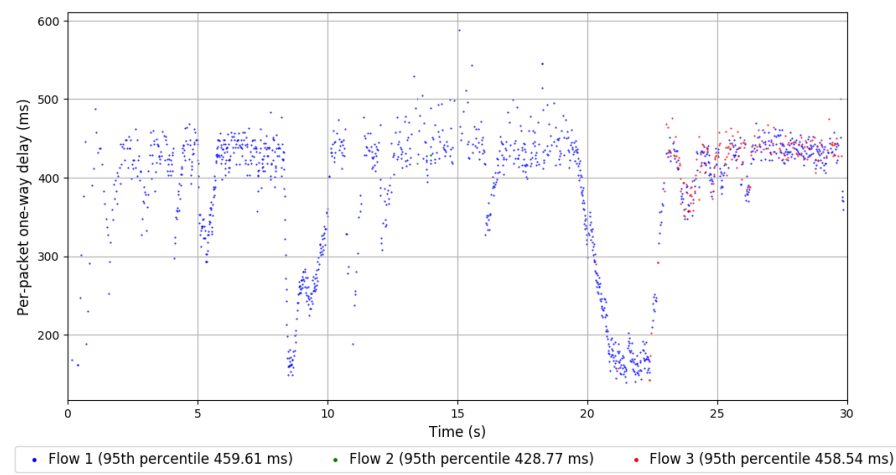
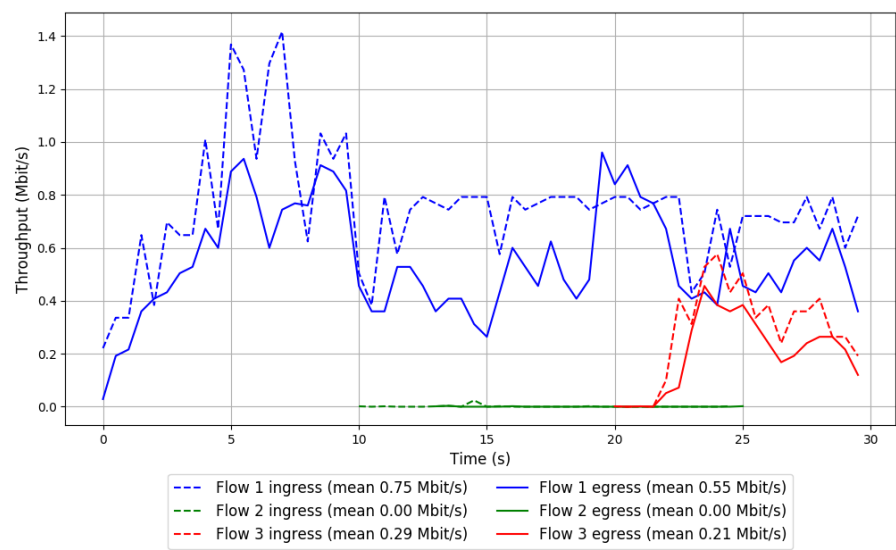
scheme	# runs	mean avg tput (Mbit/s)			mean 95th-%ile delay (ms)			mean loss rate (%)		
		flow 1	flow 2	flow 3	flow 1	flow 2	flow 3	flow 1	flow 2	flow 3
TCP BBR	3	0.46	0.16	0.24	443.16	434.54	440.88	28.48	47.46	35.08
TCP Cubic	3	0.30	0.30	0.16	428.64	421.61	429.63	7.33	10.02	28.63
LEDBAT	3	0.27	0.21	0.17	406.77	414.11	393.83	1.41	3.20	6.02
PCC	2	0.23	0.20	0.00	315.52	479.39	435.82	76.45	95.78	88.11
QUIC Cubic	3	0.36	0.33	0.26	444.13	444.42	441.83	18.04	25.17	31.92
SCReAM	2	0.10	0.14	0.14	212.22	207.51	216.62	1.60	1.20	2.73
WebRTC media	3	0.16	0.14	0.04	409.72	421.43	414.35	15.29	24.02	26.50
Sprout	3	0.09	0.10	0.09	295.17	307.78	310.31	5.65	5.70	10.08
TaoVA-100x	3	0.31	0.16	0.21	433.20	432.63	430.98	66.85	75.47	73.95
TCP Vegas	3	0.36	0.44	0.32	371.91	387.26	372.57	2.65	2.87	6.62
Verus	3	0.36	0.22	0.02	446.15	444.99	430.22	32.33	53.34	34.37
Indigo	3	0.23	0.18	0.25	394.25	391.24	373.28	13.96	23.42	20.91
Indigo-cellular	3	0.21	0.20	0.20	419.83	398.82	407.14	13.50	14.42	35.05
KohoCC	3	0.24	0.24	0.22	418.89	408.02	428.22	11.43	15.77	37.39

Run 1: Statistics of TCP BBR

Start at: 2017-09-22 13:35:41  
End at: 2017-09-22 13:36:11  
Local clock offset: 15.04 ms  
Remote clock offset: -45.283 ms

# Below is generated by plot.py at 2017-09-22 15:19:51  
# Datalink statistics  
-- Total of 3 flows:  
Average throughput: 0.62 Mbit/s  
95th percentile per-packet one-way delay: 459.611 ms  
Loss rate: 27.09%  
-- Flow 1:  
Average throughput: 0.55 Mbit/s  
95th percentile per-packet one-way delay: 459.611 ms  
Loss rate: 26.78%  
-- Flow 2:  
Average throughput: 0.00 Mbit/s  
95th percentile per-packet one-way delay: 428.766 ms  
Loss rate: 76.56%  
-- Flow 3:  
Average throughput: 0.21 Mbit/s  
95th percentile per-packet one-way delay: 458.539 ms  
Loss rate: 29.20%

Run 1: Report of TCP BBR — Data Link

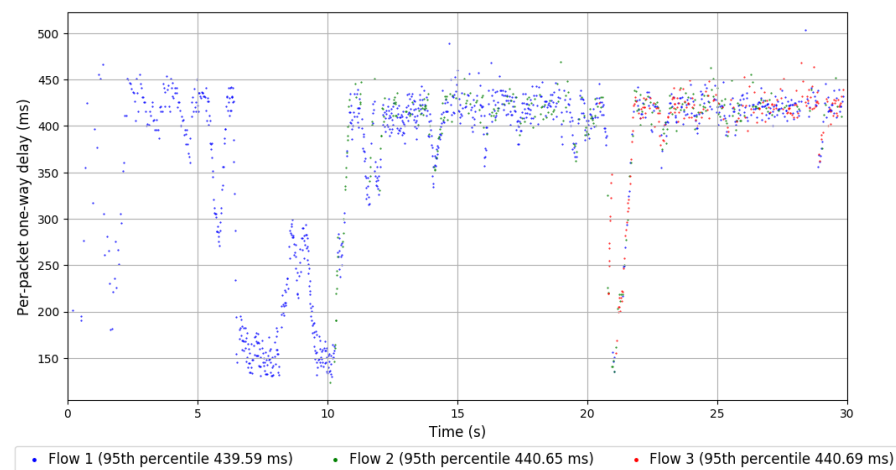
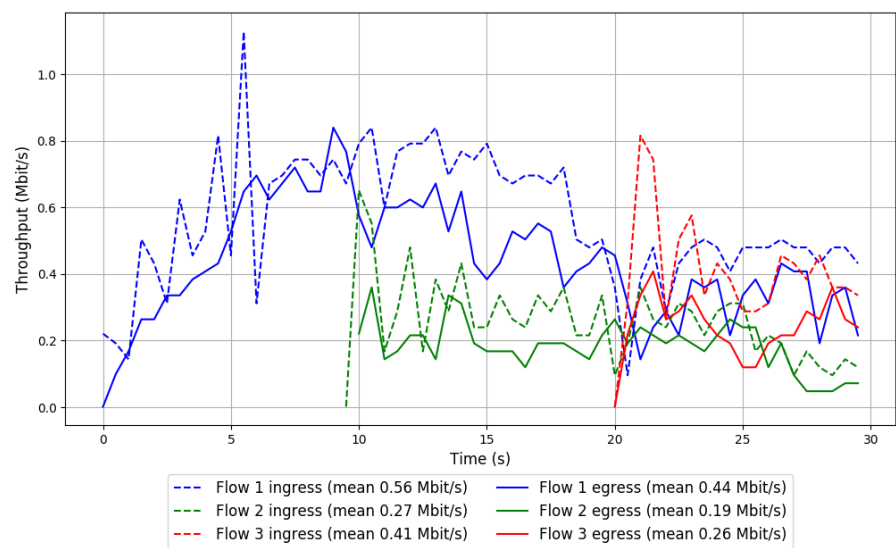


Run 2: Statistics of TCP BBR

Start at: 2017-09-22 13:55:13  
End at: 2017-09-22 13:55:43  
Local clock offset: -2.514 ms  
Remote clock offset: -45.052 ms

# Below is generated by plot.py at 2017-09-22 15:19:51  
# Datalink statistics  
-- Total of 3 flows:  
Average throughput: 0.65 Mbit/s  
95th percentile per-packet one-way delay: 440.484 ms  
Loss rate: 26.87%  
-- Flow 1:  
Average throughput: 0.44 Mbit/s  
95th percentile per-packet one-way delay: 439.592 ms  
Loss rate: 22.37%  
-- Flow 2:  
Average throughput: 0.19 Mbit/s  
95th percentile per-packet one-way delay: 440.646 ms  
Loss rate: 31.00%  
-- Flow 3:  
Average throughput: 0.26 Mbit/s  
95th percentile per-packet one-way delay: 440.694 ms  
Loss rate: 40.27%

Run 2: Report of TCP BBR — Data Link



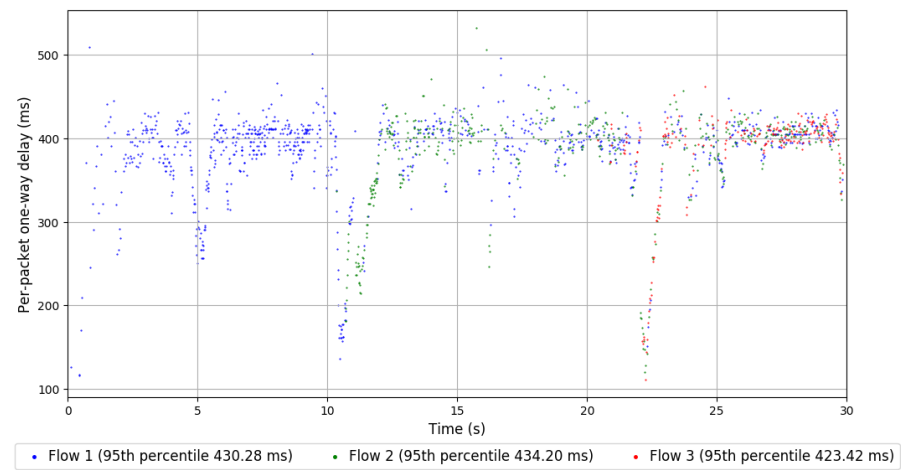
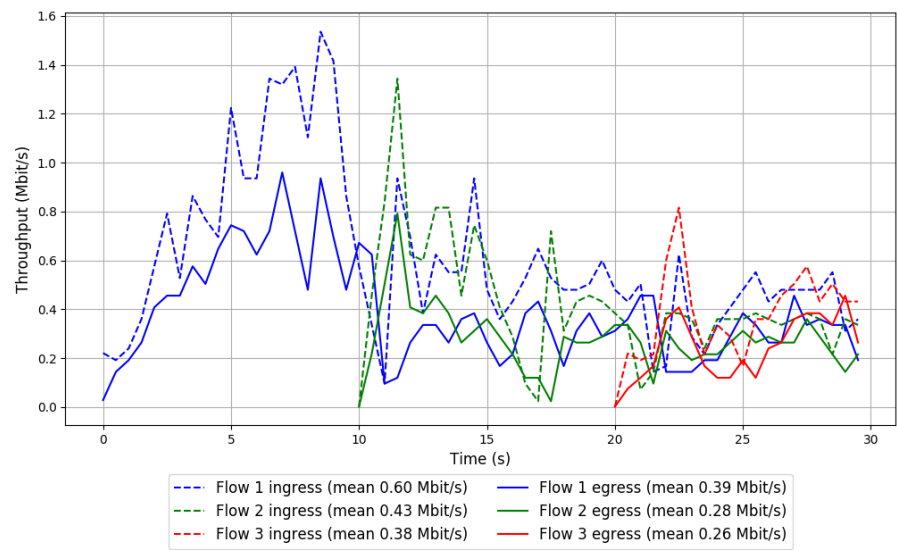
Run 3: Statistics of TCP BBR

Start at: 2017-09-22 14:14:03  
End at: 2017-09-22 14:14:33  
Local clock offset: -2.236 ms  
Remote clock offset: -32.593 ms

# Below is generated by plot.py at 2017-09-22 15:19:52  
# Datalink statistics  
-- Total of 3 flows:  
Average throughput: 0.66 Mbit/s  
95th percentile per-packet one-way delay: 430.087 ms  
Loss rate: 35.82%  
-- Flow 1:  
Average throughput: 0.39 Mbit/s  
95th percentile per-packet one-way delay: 430.277 ms  
Loss rate: 36.29%  
-- Flow 2:  
Average throughput: 0.28 Mbit/s  
95th percentile per-packet one-way delay: 434.199 ms  
Loss rate: 34.83%  
-- Flow 3:  
Average throughput: 0.26 Mbit/s  
95th percentile per-packet one-way delay: 423.415 ms  
Loss rate: 35.76%



Run 3: Report of TCP BBR — Data Link

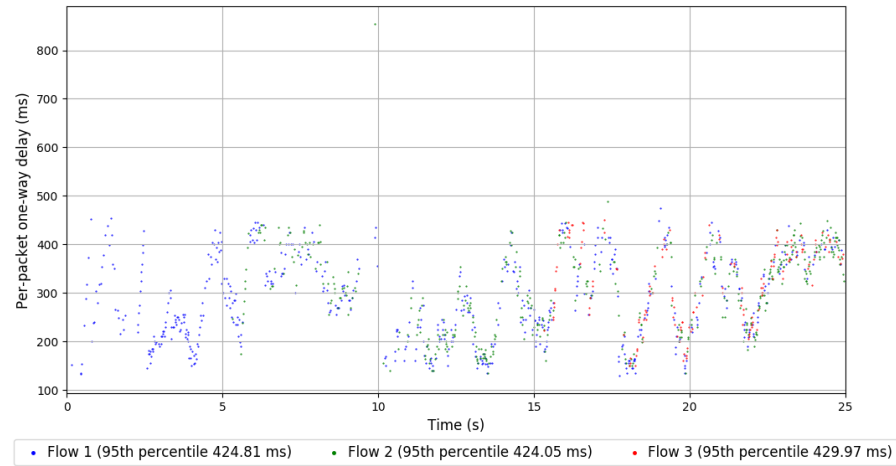
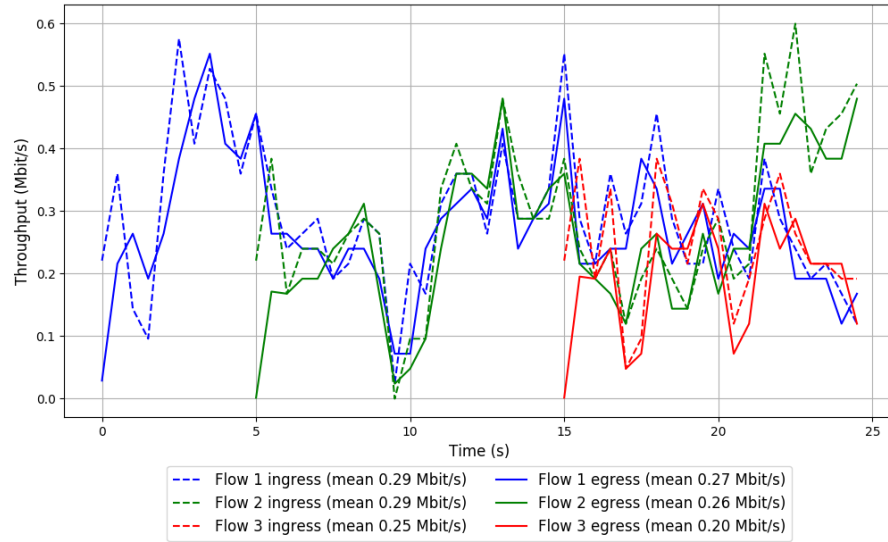


Run 1: Statistics of TCP Cubic

Start at: 2017-09-22 13:38:15  
End at: 2017-09-22 13:38:45  
Local clock offset: -2.567 ms  
Remote clock offset: -44.508 ms

# Below is generated by plot.py at 2017-09-22 15:19:52  
# Datalink statistics  
-- Total of 3 flows:  
Average throughput: 0.56 Mbit/s  
95th percentile per-packet one-way delay: 427.202 ms  
Loss rate: 10.91%  
-- Flow 1:  
Average throughput: 0.27 Mbit/s  
95th percentile per-packet one-way delay: 424.814 ms  
Loss rate: 7.70%  
-- Flow 2:  
Average throughput: 0.26 Mbit/s  
95th percentile per-packet one-way delay: 424.046 ms  
Loss rate: 10.83%  
-- Flow 3:  
Average throughput: 0.20 Mbit/s  
95th percentile per-packet one-way delay: 429.970 ms  
Loss rate: 20.77%

## Run 1: Report of TCP Cubic — Data Link

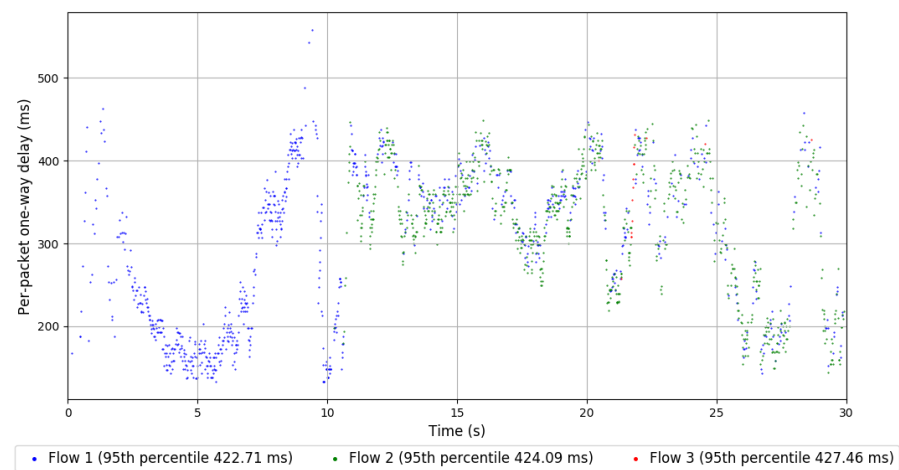
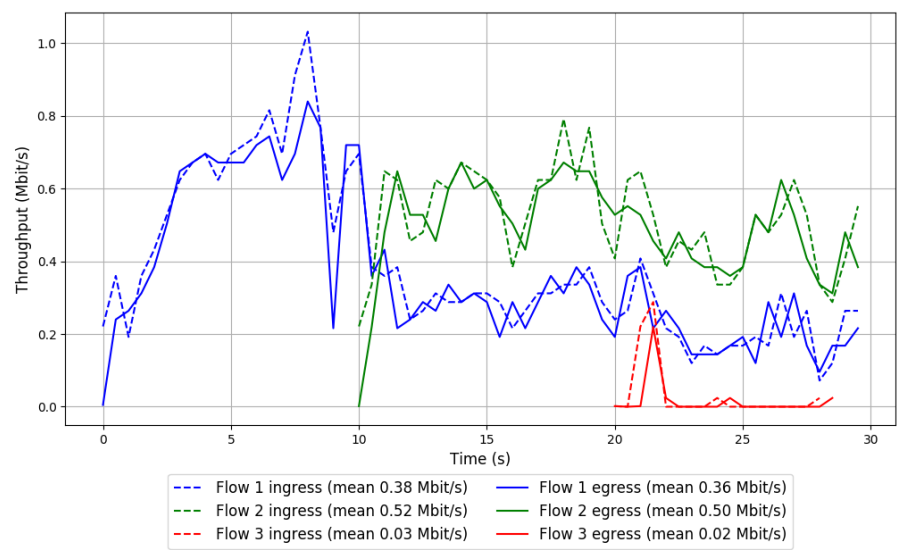


Run 2: Statistics of TCP Cubic

Start at: 2017-09-22 13:57:52  
End at: 2017-09-22 13:58:22  
Local clock offset: -2.607 ms  
Remote clock offset: -49.574 ms

# Below is generated by plot.py at 2017-09-22 15:19:52  
# Datalink statistics  
-- Total of 3 flows:  
Average throughput: 0.70 Mbit/s  
95th percentile per-packet one-way delay: 424.031 ms  
Loss rate: 6.30%  
-- Flow 1:  
Average throughput: 0.36 Mbit/s  
95th percentile per-packet one-way delay: 422.710 ms  
Loss rate: 6.35%  
-- Flow 2:  
Average throughput: 0.50 Mbit/s  
95th percentile per-packet one-way delay: 424.088 ms  
Loss rate: 5.12%  
-- Flow 3:  
Average throughput: 0.02 Mbit/s  
95th percentile per-packet one-way delay: 427.464 ms  
Loss rate: 47.27%

Run 2: Report of TCP Cubic — Data Link

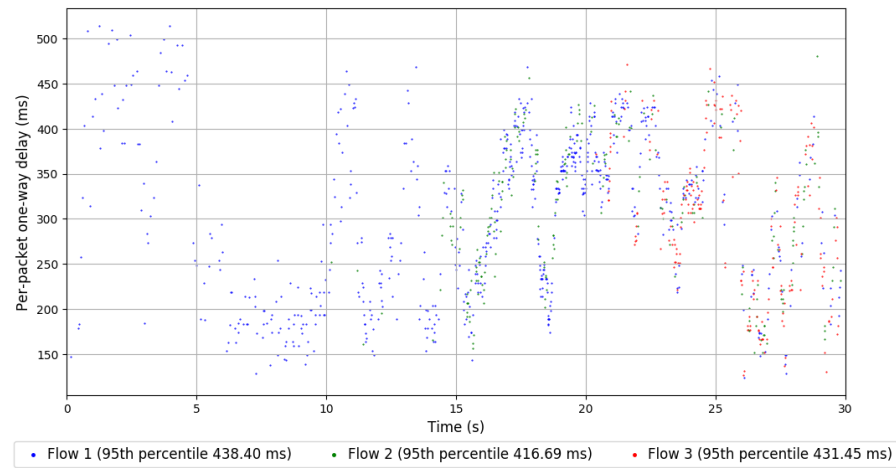
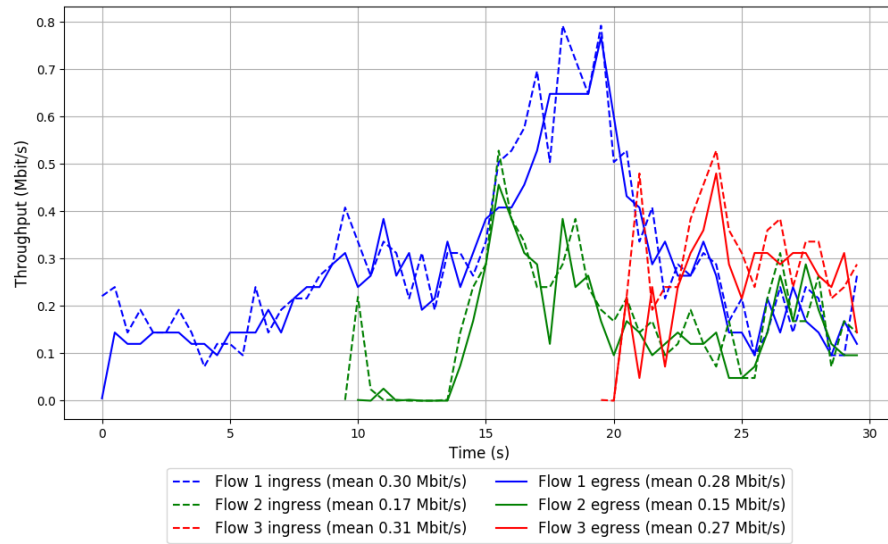


Run 3: Statistics of TCP Cubic

Start at: 2017-09-22 14:16:40  
End at: 2017-09-22 14:17:10  
Local clock offset: -2.306 ms  
Remote clock offset: -44.32 ms

# Below is generated by plot.py at 2017-09-22 15:19:52  
# Datalink statistics  
-- Total of 3 flows:  
Average throughput: 0.46 Mbit/s  
95th percentile per-packet one-way delay: 431.455 ms  
Loss rate: 11.27%  
-- Flow 1:  
Average throughput: 0.28 Mbit/s  
95th percentile per-packet one-way delay: 438.396 ms  
Loss rate: 7.95%  
-- Flow 2:  
Average throughput: 0.15 Mbit/s  
95th percentile per-packet one-way delay: 416.685 ms  
Loss rate: 14.11%  
-- Flow 3:  
Average throughput: 0.27 Mbit/s  
95th percentile per-packet one-way delay: 431.455 ms  
Loss rate: 17.84%

### Run 3: Report of TCP Cubic — Data Link



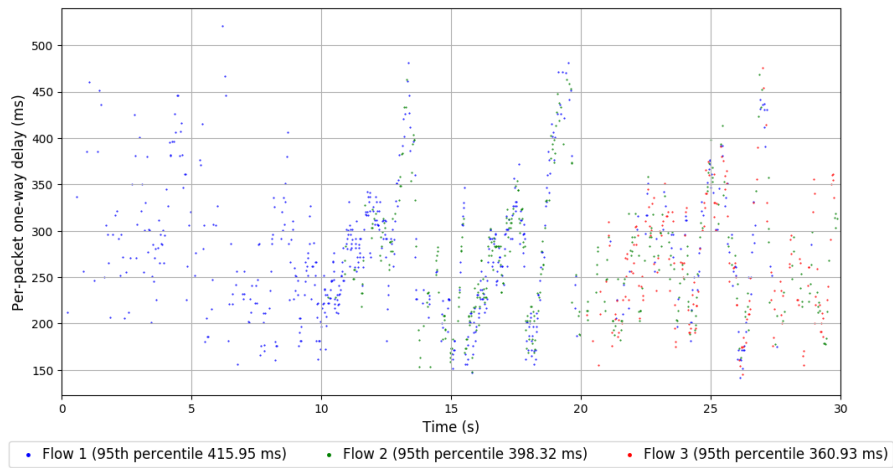
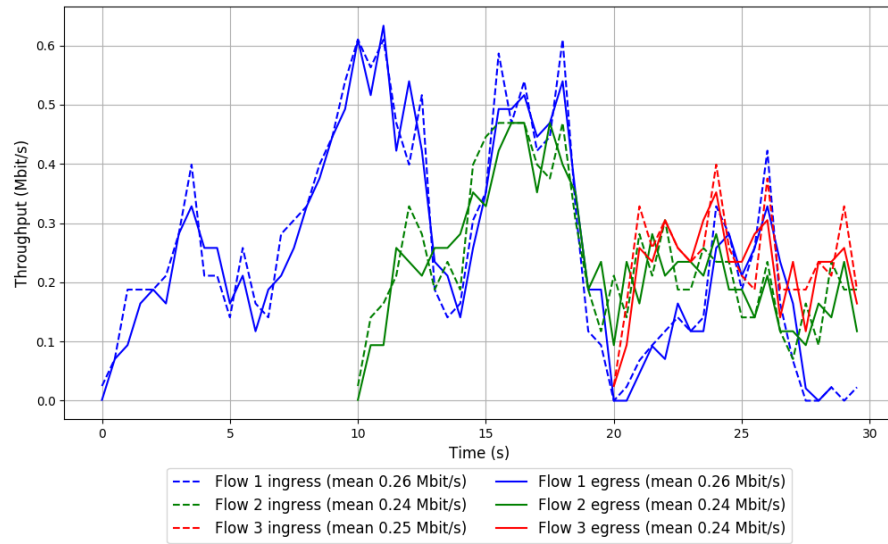
Run 1: Statistics of LEDBAT

Start at: 2017-09-22 13:29:06  
End at: 2017-09-22 13:29:36  
Local clock offset: 16.029 ms  
Remote clock offset: -44.443 ms

# Below is generated by plot.py at 2017-09-22 15:19:52  
# Datalink statistics  
-- Total of 3 flows:  
Average throughput: 0.49 Mbit/s  
95th percentile per-packet one-way delay: 402.889 ms  
Loss rate: 3.14%  
-- Flow 1:  
Average throughput: 0.26 Mbit/s  
95th percentile per-packet one-way delay: 415.952 ms  
Loss rate: 2.29%  
-- Flow 2:  
Average throughput: 0.24 Mbit/s  
95th percentile per-packet one-way delay: 398.324 ms  
Loss rate: 3.15%  
-- Flow 3:  
Average throughput: 0.24 Mbit/s  
95th percentile per-packet one-way delay: 360.929 ms  
Loss rate: 5.88%



## Run 1: Report of LEDBAT — Data Link

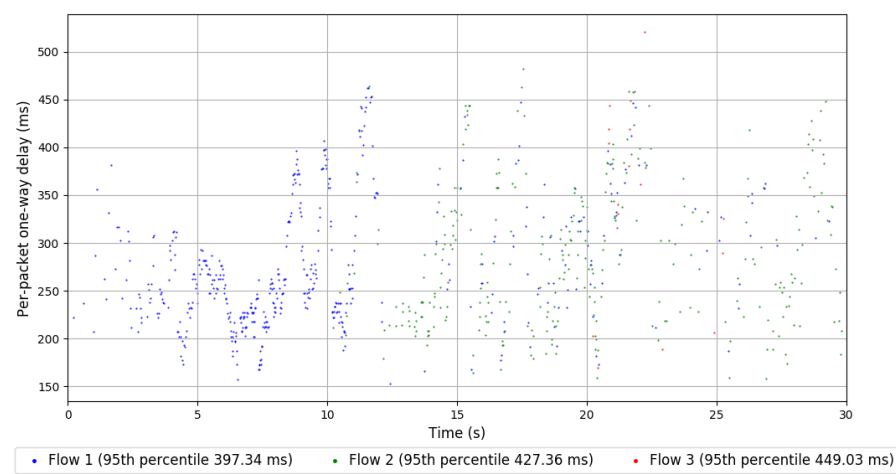
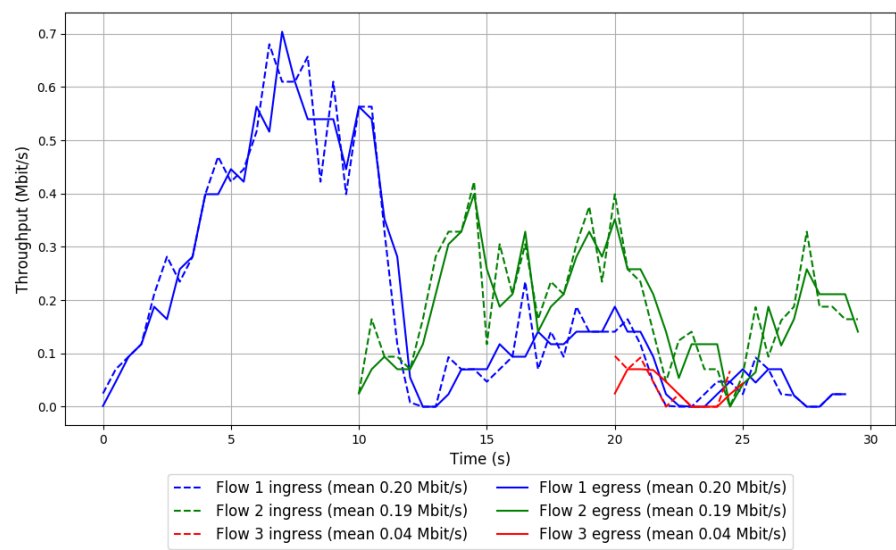


Run 2: Statistics of LEDBAT

Start at: 2017-09-22 13:48:22  
End at: 2017-09-22 13:48:52  
Local clock offset: 17.629 ms  
Remote clock offset: -39.209 ms

# Below is generated by plot.py at 2017-09-22 15:19:52  
# Datalink statistics  
-- Total of 3 flows:  
Average throughput: 0.32 Mbit/s  
95th percentile per-packet one-way delay: 418.234 ms  
Loss rate: 2.05%  
-- Flow 1:  
Average throughput: 0.20 Mbit/s  
95th percentile per-packet one-way delay: 397.337 ms  
Loss rate: 0.61%  
-- Flow 2:  
Average throughput: 0.19 Mbit/s  
95th percentile per-packet one-way delay: 427.359 ms  
Loss rate: 3.99%  
-- Flow 3:  
Average throughput: 0.04 Mbit/s  
95th percentile per-packet one-way delay: 449.027 ms  
Loss rate: 5.93%

Run 2: Report of LEDBAT — Data Link

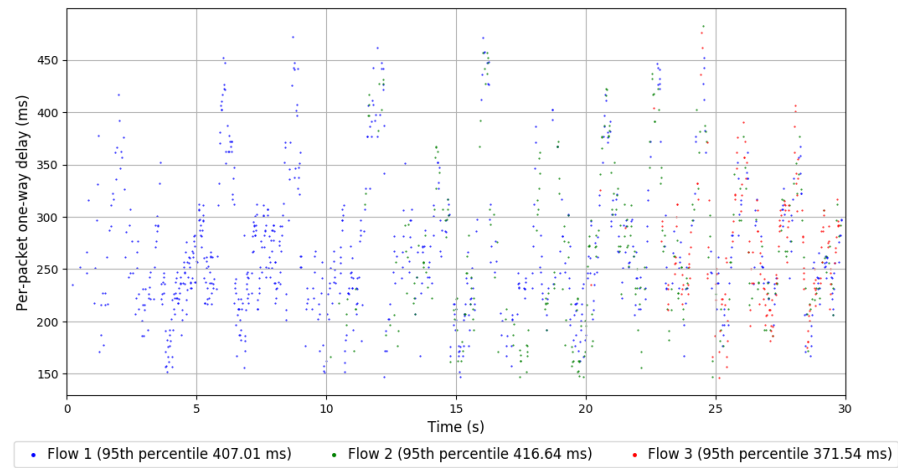
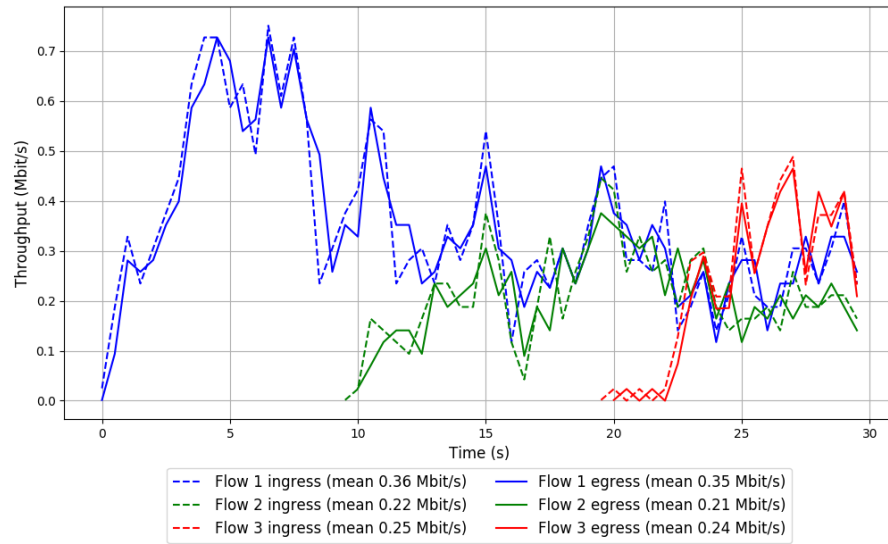


Run 3: Statistics of LEDBAT

Start at: 2017-09-22 14:07:24  
End at: 2017-09-22 14:07:54  
Local clock offset: 17.614 ms  
Remote clock offset: -46.68 ms

# Below is generated by plot.py at 2017-09-22 15:19:54  
# Datalink statistics  
-- Total of 3 flows:  
Average throughput: 0.57 Mbit/s  
95th percentile per-packet one-way delay: 404.211 ms  
Loss rate: 2.29%  
-- Flow 1:  
Average throughput: 0.35 Mbit/s  
95th percentile per-packet one-way delay: 407.007 ms  
Loss rate: 1.32%  
-- Flow 2:  
Average throughput: 0.21 Mbit/s  
95th percentile per-packet one-way delay: 416.640 ms  
Loss rate: 2.45%  
-- Flow 3:  
Average throughput: 0.24 Mbit/s  
95th percentile per-packet one-way delay: 371.544 ms  
Loss rate: 6.26%

### Run 3: Report of LEDBAT — Data Link

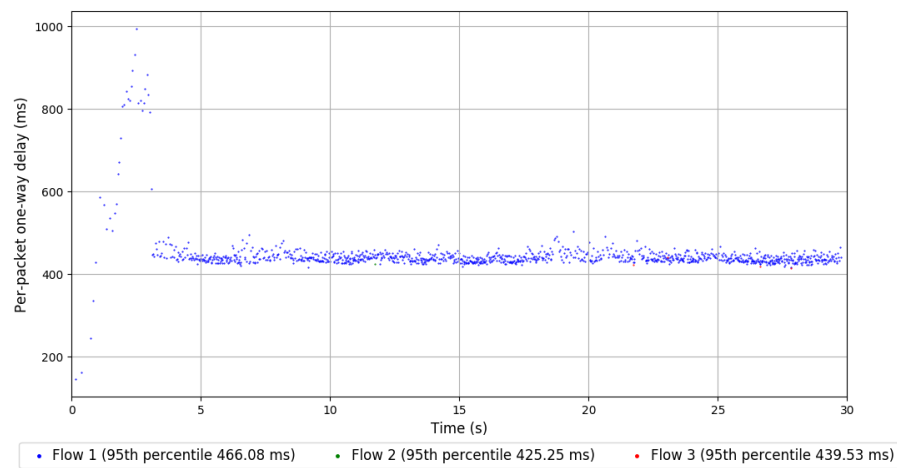
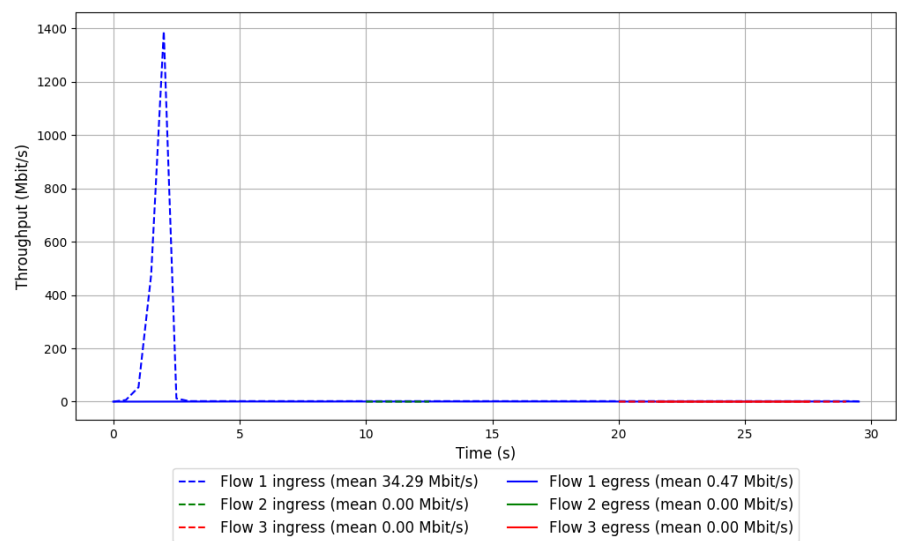


Run 1: Statistics of PCC

Start at: 2017-09-22 13:42:26  
End at: 2017-09-22 13:42:56  
Local clock offset: 16.604 ms  
Remote clock offset: -29.89 ms

# Below is generated by plot.py at 2017-09-22 15:20:18  
# Datalink statistics  
-- Total of 3 flows:  
Average throughput: 0.47 Mbit/s  
95th percentile per-packet one-way delay: 465.804 ms  
Loss rate: 98.64%  
-- Flow 1:  
Average throughput: 0.47 Mbit/s  
95th percentile per-packet one-way delay: 466.076 ms  
Loss rate: 98.64%  
-- Flow 2:  
Average throughput: 0.00 Mbit/s  
95th percentile per-packet one-way delay: 425.254 ms  
Loss rate: 92.31%  
-- Flow 3:  
Average throughput: 0.00 Mbit/s  
95th percentile per-packet one-way delay: 439.530 ms  
Loss rate: 83.79%

Run 1: Report of PCC — Data Link



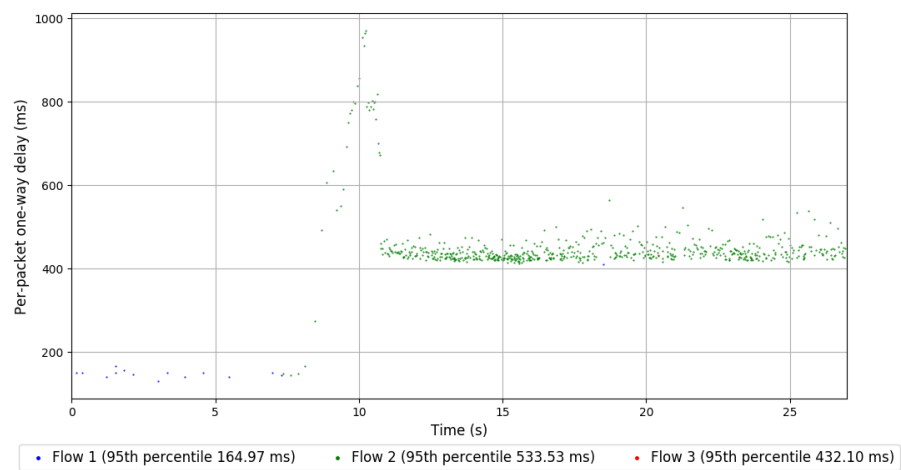
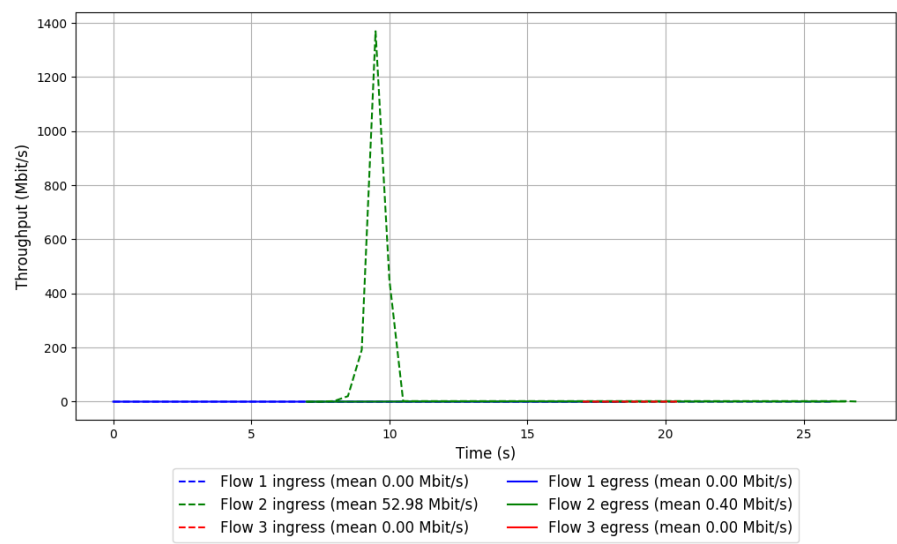
Run 2: Statistics of PCC

Start at: 2017-09-22 14:01:50  
End at: 2017-09-22 14:02:20  
Local clock offset: -1.396 ms  
Remote clock offset: -46.645 ms

# Below is generated by plot.py at 2017-09-22 15:20:19  
# Datalink statistics  
-- Total of 3 flows:  
Average throughput: 0.29 Mbit/s  
95th percentile per-packet one-way delay: 517.848 ms  
Loss rate: 99.25%  
-- Flow 1:  
Average throughput: 0.00 Mbit/s  
95th percentile per-packet one-way delay: 164.972 ms  
Loss rate: 54.26%  
-- Flow 2:  
Average throughput: 0.40 Mbit/s  
95th percentile per-packet one-way delay: 533.533 ms  
Loss rate: 99.25%  
-- Flow 3:  
Average throughput: 0.00 Mbit/s  
95th percentile per-packet one-way delay: 432.101 ms  
Loss rate: 92.43%



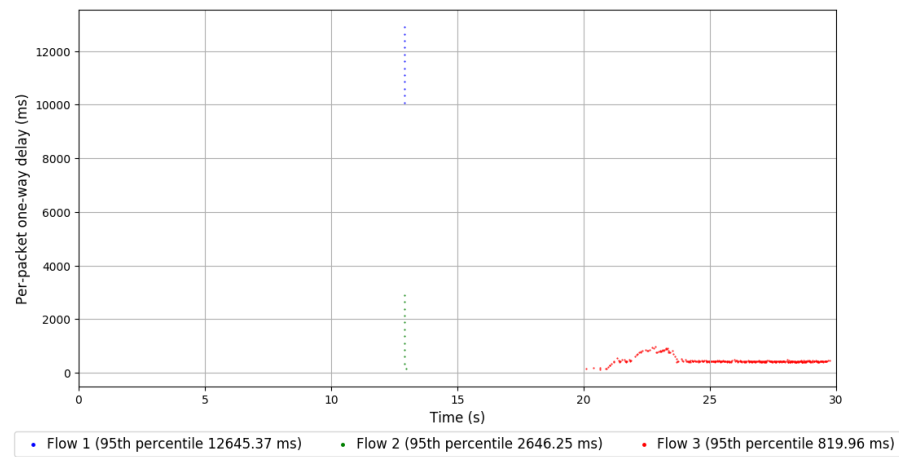
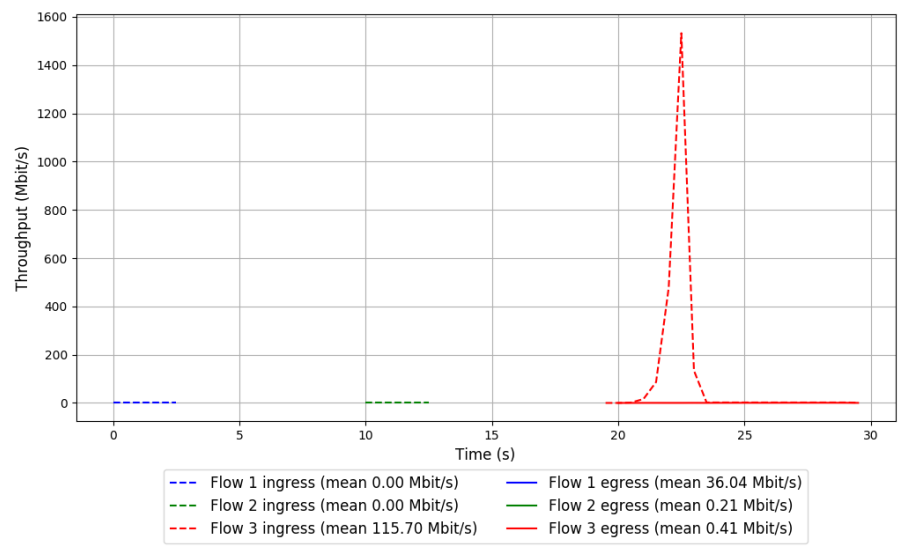
Run 2: Report of PCC — Data Link



Run 3: Statistics of PCC

Start at: 2017-09-22 14:20:29  
End at: 2017-09-22 14:20:59  
Local clock offset: -1.015 ms  
Remote clock offset: -31.294 ms

Run 3: Report of PCC — Data Link

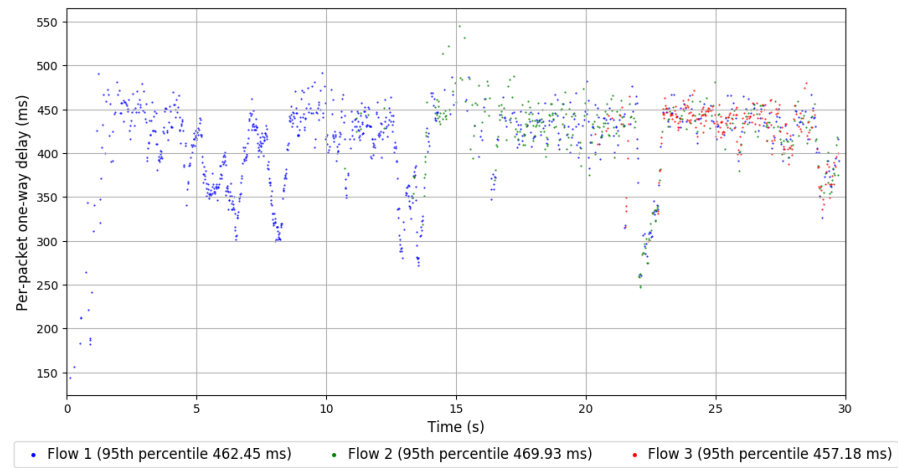
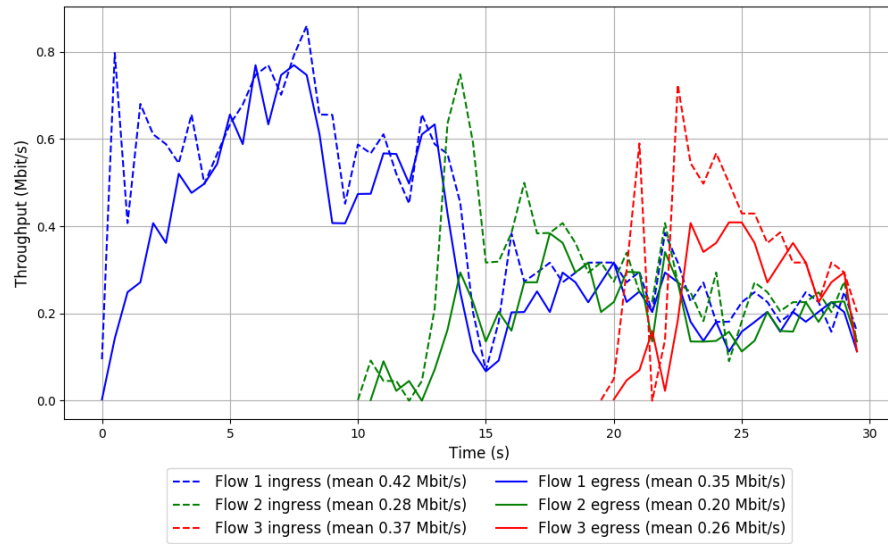


Run 1: Statistics of QUIC Cubic

Start at: 2017-09-22 13:33:06  
End at: 2017-09-22 13:33:36  
Local clock offset: 17.794 ms  
Remote clock offset: -43.517 ms

# Below is generated by plot.py at 2017-09-22 15:20:20  
# Datalink statistics  
-- Total of 3 flows:  
Average throughput: 0.56 Mbit/s  
95th percentile per-packet one-way delay: 462.453 ms  
Loss rate: 23.84%  
-- Flow 1:  
Average throughput: 0.35 Mbit/s  
95th percentile per-packet one-way delay: 462.453 ms  
Loss rate: 18.23%  
-- Flow 2:  
Average throughput: 0.20 Mbit/s  
95th percentile per-packet one-way delay: 469.934 ms  
Loss rate: 31.88%  
-- Flow 3:  
Average throughput: 0.26 Mbit/s  
95th percentile per-packet one-way delay: 457.183 ms  
Loss rate: 31.22%

## Run 1: Report of QUIC Cubic — Data Link

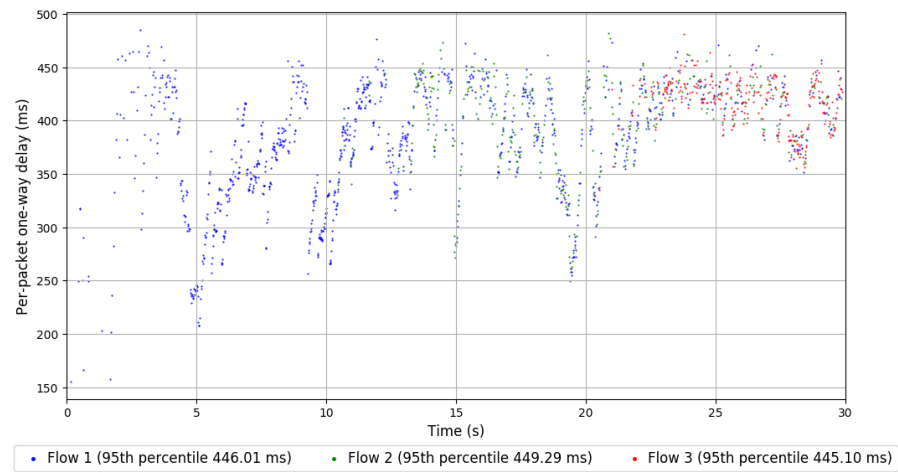
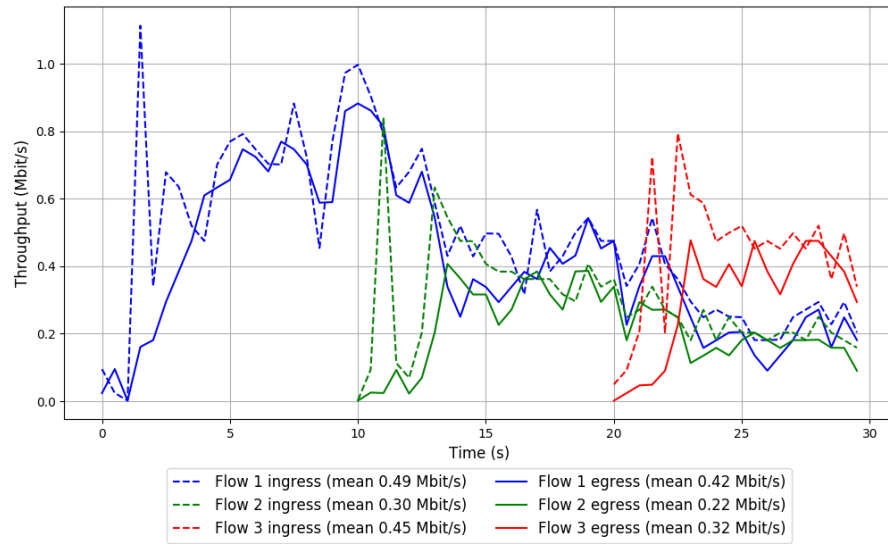


Run 2: Statistics of QUIC Cubic

Start at: 2017-09-22 13:52:21  
End at: 2017-09-22 13:52:51  
Local clock offset: 15.035 ms  
Remote clock offset: -41.064 ms

# Below is generated by plot.py at 2017-09-22 15:20:20  
# Datalink statistics  
-- Total of 3 flows:  
Average throughput: 0.66 Mbit/s  
95th percentile per-packet one-way delay: 446.962 ms  
Loss rate: 21.17%  
-- Flow 1:  
Average throughput: 0.42 Mbit/s  
95th percentile per-packet one-way delay: 446.009 ms  
Loss rate: 15.80%  
-- Flow 2:  
Average throughput: 0.22 Mbit/s  
95th percentile per-packet one-way delay: 449.294 ms  
Loss rate: 26.59%  
-- Flow 3:  
Average throughput: 0.32 Mbit/s  
95th percentile per-packet one-way delay: 445.101 ms  
Loss rate: 31.88%

## Run 2: Report of QUIC Cubic — Data Link



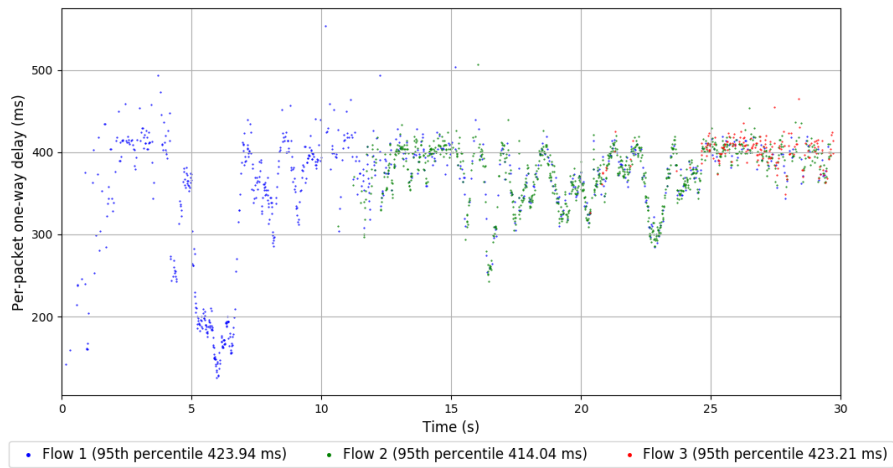
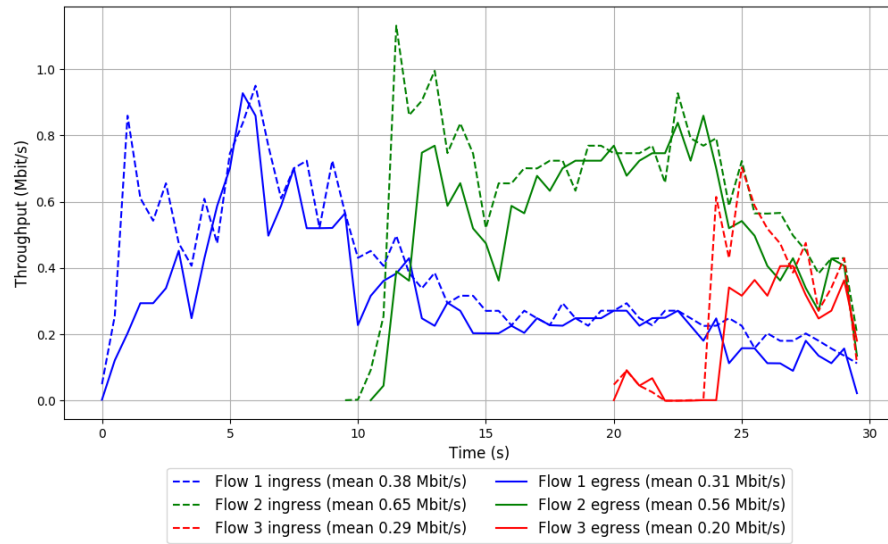
Run 3: Statistics of QUIC Cubic

Start at: 2017-09-22 14:11:29  
End at: 2017-09-22 14:11:59  
Local clock offset: -2.236 ms  
Remote clock offset: -31.796 ms

# Below is generated by plot.py at 2017-09-22 15:20:20  
# Datalink statistics  
-- Total of 3 flows:  
Average throughput: 0.73 Mbit/s  
95th percentile per-packet one-way delay: 418.689 ms  
Loss rate: 19.93%  
-- Flow 1:  
Average throughput: 0.31 Mbit/s  
95th percentile per-packet one-way delay: 423.936 ms  
Loss rate: 20.09%  
-- Flow 2:  
Average throughput: 0.56 Mbit/s  
95th percentile per-packet one-way delay: 414.036 ms  
Loss rate: 17.04%  
-- Flow 3:  
Average throughput: 0.20 Mbit/s  
95th percentile per-packet one-way delay: 423.208 ms  
Loss rate: 32.67%



### Run 3: Report of QUIC Cubic — Data Link

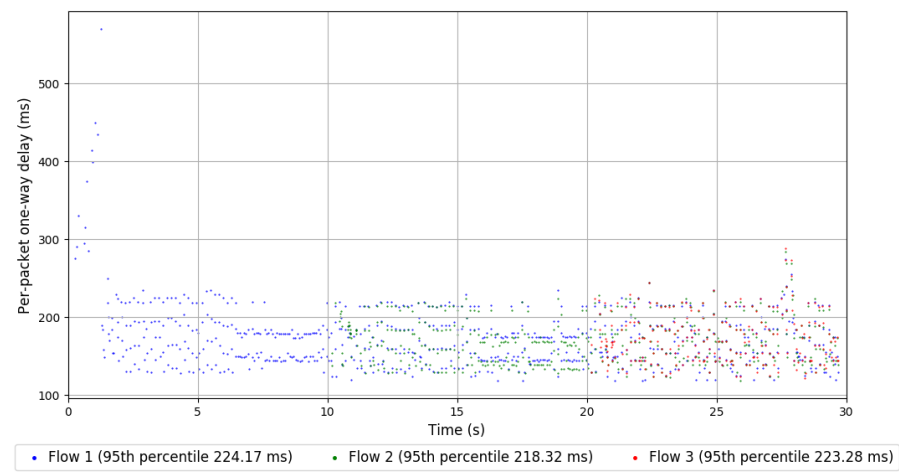
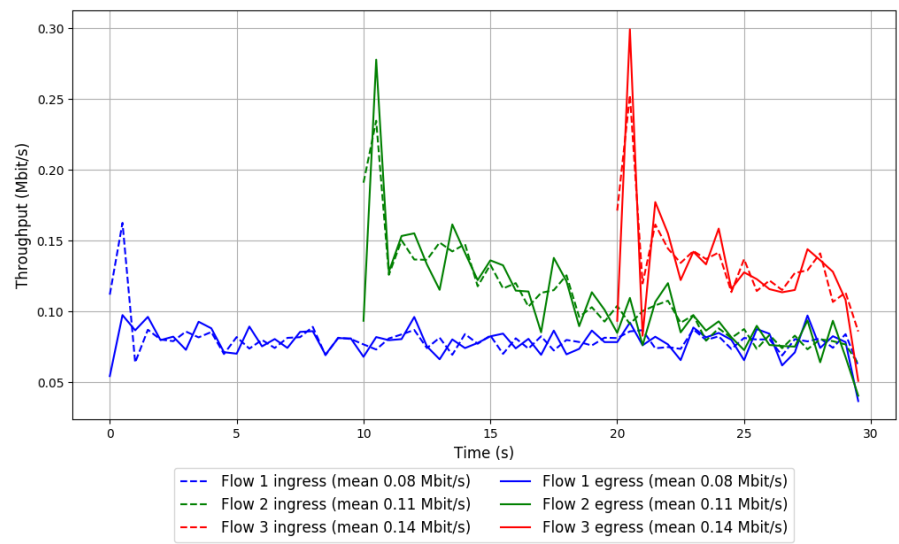


Run 1: Statistics of SCReAM

Start at: 2017-09-22 13:36:58  
End at: 2017-09-22 13:37:28  
Local clock offset: -2.631 ms  
Remote clock offset: -47.338 ms

# Below is generated by plot.py at 2017-09-22 15:20:20  
# Datalink statistics  
-- Total of 3 flows:  
Average throughput: 0.20 Mbit/s  
95th percentile per-packet one-way delay: 222.990 ms  
Loss rate: 1.94%  
-- Flow 1:  
Average throughput: 0.08 Mbit/s  
95th percentile per-packet one-way delay: 224.171 ms  
Loss rate: 2.32%  
-- Flow 2:  
Average throughput: 0.11 Mbit/s  
95th percentile per-packet one-way delay: 218.316 ms  
Loss rate: 1.16%  
-- Flow 3:  
Average throughput: 0.14 Mbit/s  
95th percentile per-packet one-way delay: 223.285 ms  
Loss rate: 2.53%

Run 1: Report of SReAM — Data Link



Run 2: Statistics of SCReAM

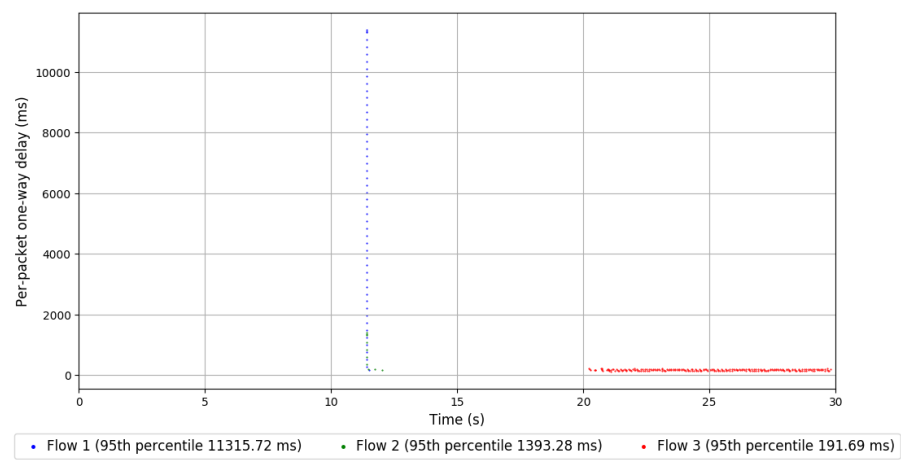
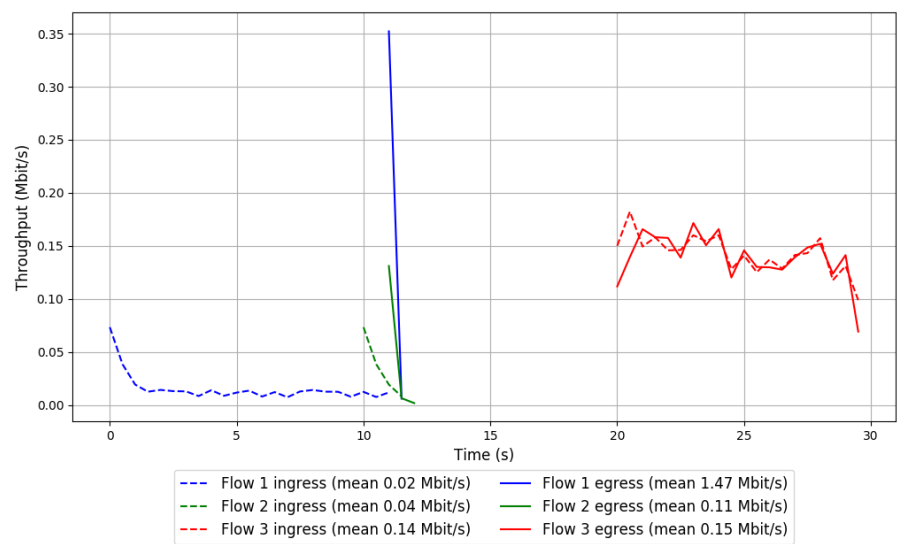
Start at: 2017-09-22 13:56:35

End at: 2017-09-22 13:57:05

Local clock offset: -2.535 ms

Remote clock offset: -46.002 ms

Run 2: Report of SReAM — Data Link

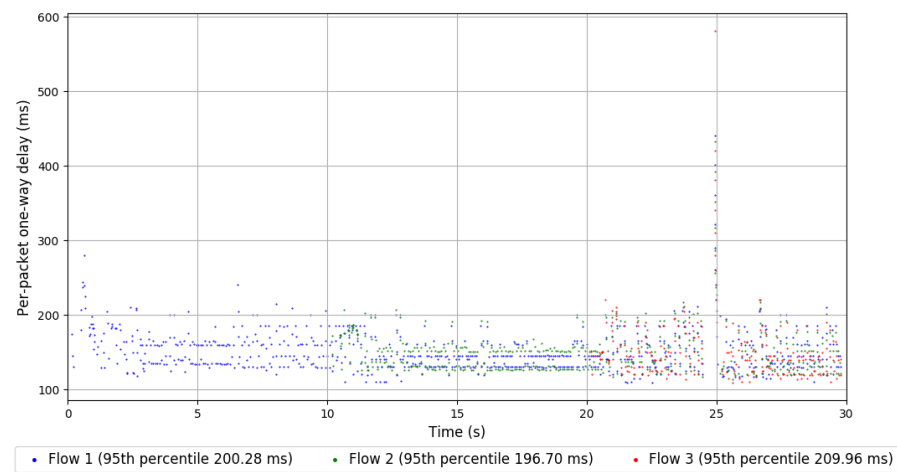
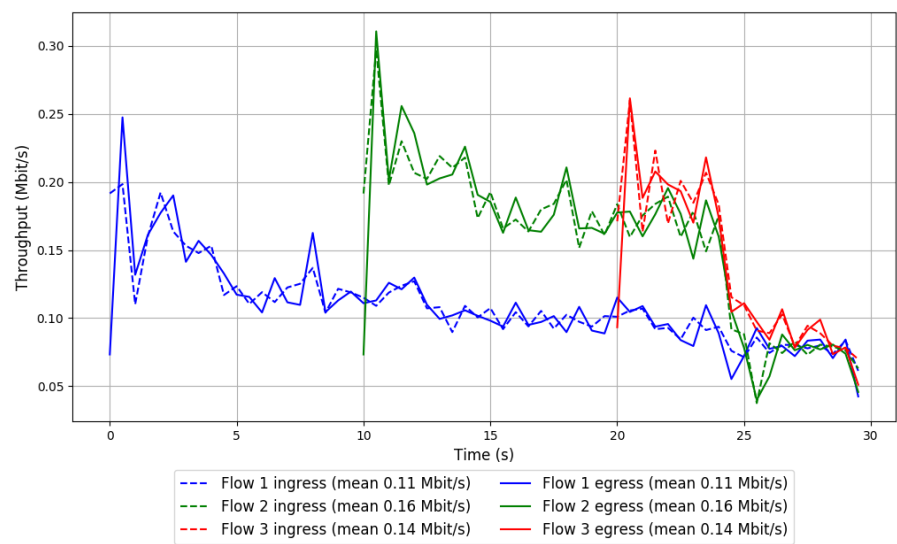


Run 3: Statistics of SCReAM

Start at: 2017-09-22 14:15:20  
End at: 2017-09-22 14:15:50  
Local clock offset: -2.27 ms  
Remote clock offset: -40.483 ms

# Below is generated by plot.py at 2017-09-22 15:20:20  
# Datalink statistics  
-- Total of 3 flows:  
Average throughput: 0.26 Mbit/s  
95th percentile per-packet one-way delay: 200.552 ms  
Loss rate: 1.39%  
-- Flow 1:  
Average throughput: 0.11 Mbit/s  
95th percentile per-packet one-way delay: 200.276 ms  
Loss rate: 0.88%  
-- Flow 2:  
Average throughput: 0.16 Mbit/s  
95th percentile per-packet one-way delay: 196.701 ms  
Loss rate: 1.24%  
-- Flow 3:  
Average throughput: 0.14 Mbit/s  
95th percentile per-packet one-way delay: 209.956 ms  
Loss rate: 2.93%

Run 3: Report of SReAM — Data Link



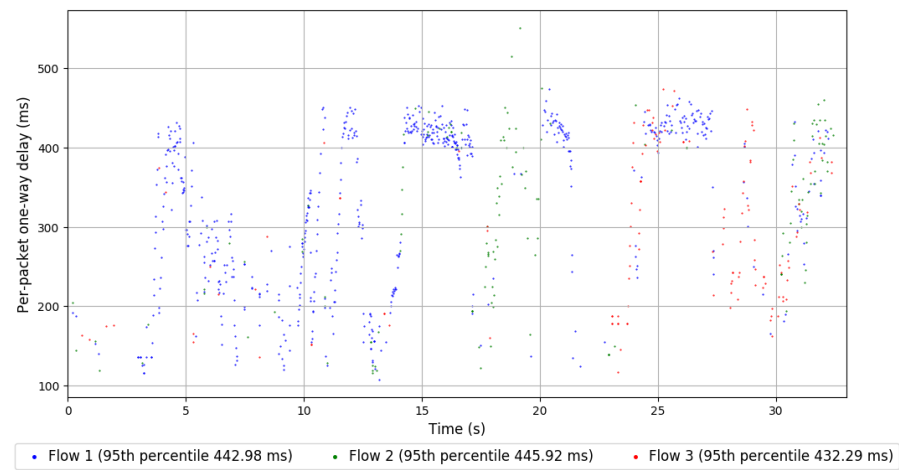
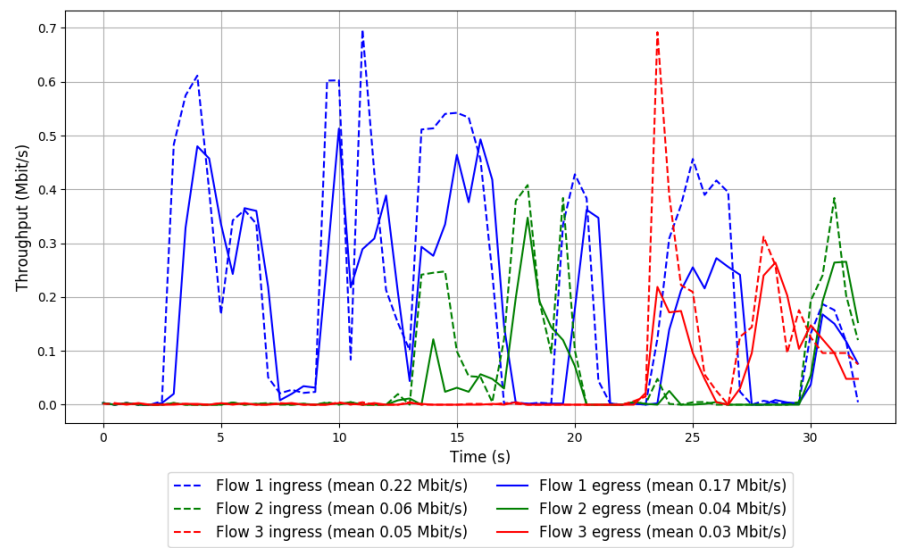
Run 1: Statistics of WebRTC media

Start at: 2017-09-22 13:45:33  
End at: 2017-09-22 13:46:03  
Local clock offset: -2.829 ms  
Remote clock offset: -39.934 ms

# Below is generated by plot.py at 2017-09-22 15:20:20  
# Datalink statistics  
-- Total of 3 flows:  
Average throughput: 0.24 Mbit/s  
95th percentile per-packet one-way delay: 443.026 ms  
Loss rate: 26.10%  
-- Flow 1:  
Average throughput: 0.17 Mbit/s  
95th percentile per-packet one-way delay: 442.976 ms  
Loss rate: 21.24%  
-- Flow 2:  
Average throughput: 0.04 Mbit/s  
95th percentile per-packet one-way delay: 445.922 ms  
Loss rate: 37.50%  
-- Flow 3:  
Average throughput: 0.03 Mbit/s  
95th percentile per-packet one-way delay: 432.294 ms  
Loss rate: 33.37%



Run 1: Report of WebRTC media — Data Link

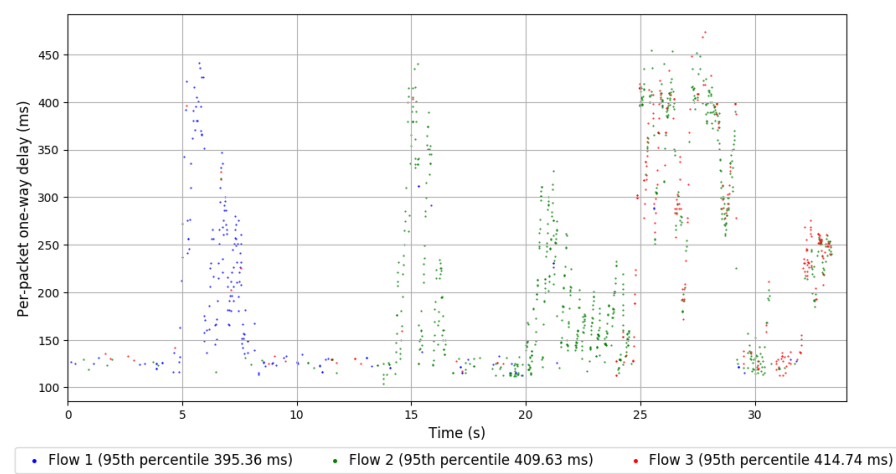
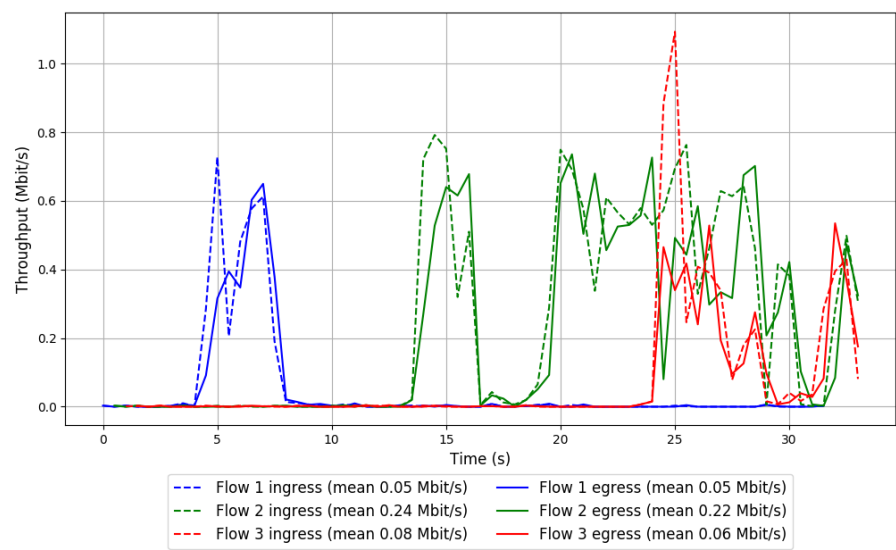


Run 2: Statistics of WebRTC media

Start at: 2017-09-22 14:04:43  
End at: 2017-09-22 14:05:13  
Local clock offset: -2.472 ms  
Remote clock offset: -33.783 ms

# Below is generated by plot.py at 2017-09-22 15:20:20  
# Datalink statistics  
-- Total of 3 flows:  
Average throughput: 0.32 Mbit/s  
95th percentile per-packet one-way delay: 409.634 ms  
Loss rate: 12.58%  
-- Flow 1:  
Average throughput: 0.05 Mbit/s  
95th percentile per-packet one-way delay: 395.355 ms  
Loss rate: 8.98%  
-- Flow 2:  
Average throughput: 0.22 Mbit/s  
95th percentile per-packet one-way delay: 409.634 ms  
Loss rate: 10.35%  
-- Flow 3:  
Average throughput: 0.06 Mbit/s  
95th percentile per-packet one-way delay: 414.743 ms  
Loss rate: 21.56%

Run 2: Report of WebRTC media — Data Link

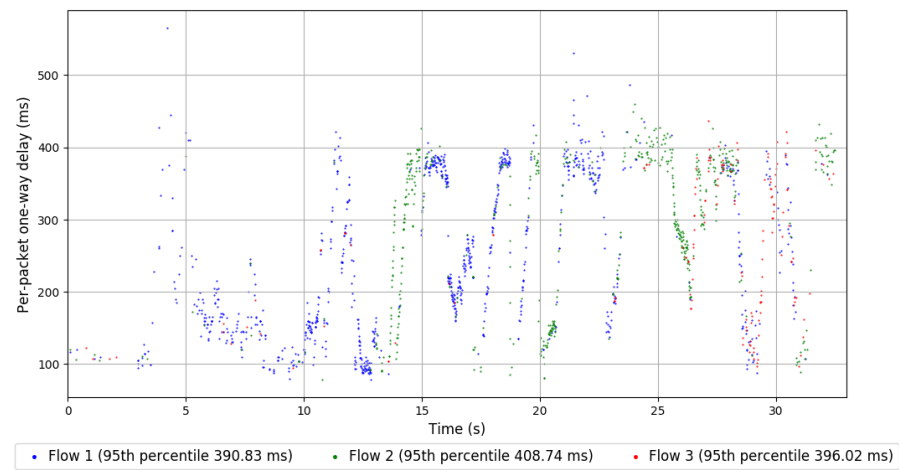
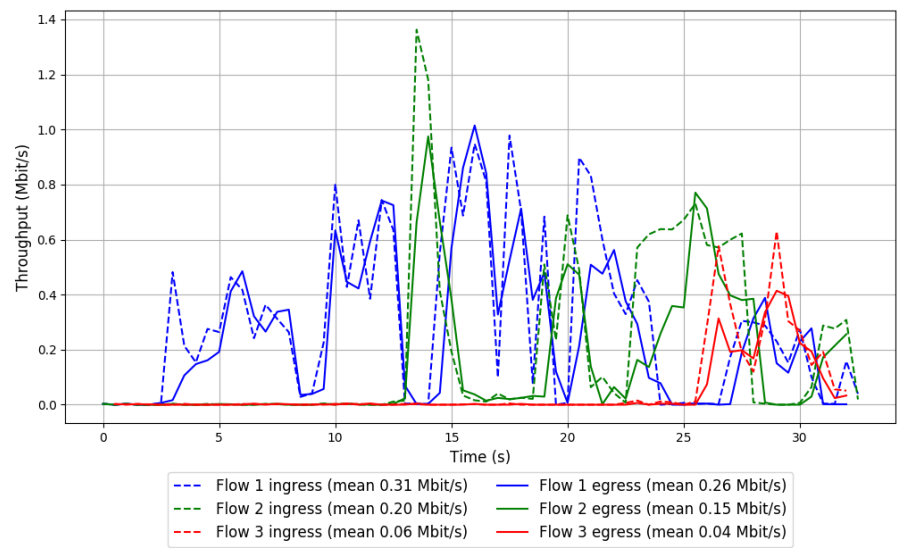


Run 3: Statistics of WebRTC media

Start at: 2017-09-22 14:23:07  
End at: 2017-09-22 14:23:37  
Local clock offset: -2.305 ms  
Remote clock offset: -9.483 ms

# Below is generated by plot.py at 2017-09-22 15:20:20  
# Datalink statistics  
-- Total of 3 flows:  
Average throughput: 0.45 Mbit/s  
95th percentile per-packet one-way delay: 398.049 ms  
Loss rate: 19.54%  
-- Flow 1:  
Average throughput: 0.26 Mbit/s  
95th percentile per-packet one-way delay: 390.830 ms  
Loss rate: 15.64%  
-- Flow 2:  
Average throughput: 0.15 Mbit/s  
95th percentile per-packet one-way delay: 408.741 ms  
Loss rate: 24.21%  
-- Flow 3:  
Average throughput: 0.04 Mbit/s  
95th percentile per-packet one-way delay: 396.018 ms  
Loss rate: 24.56%

Run 3: Report of WebRTC media — Data Link

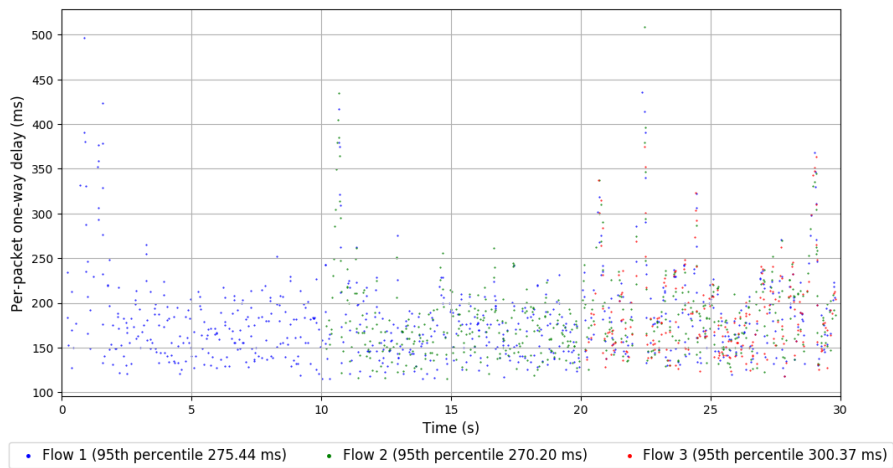
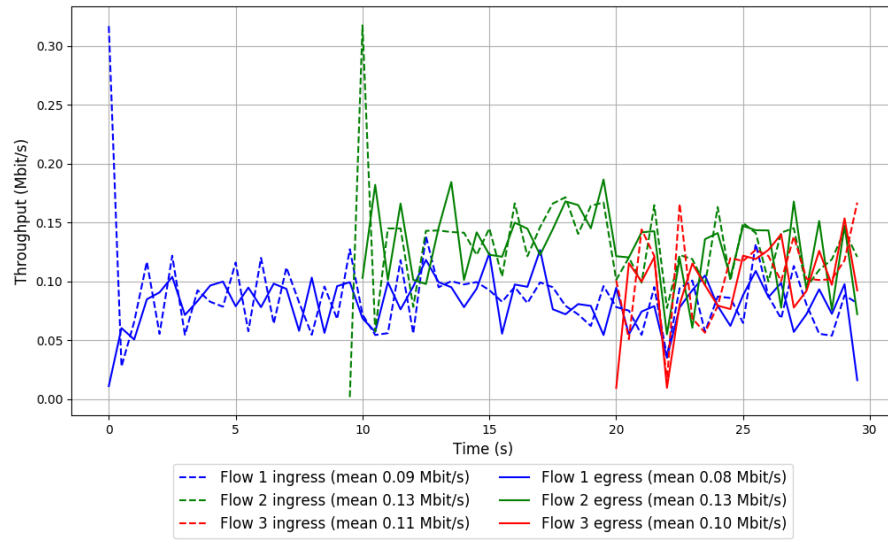


Run 1: Statistics of Sprout

Start at: 2017-09-22 13:41:09  
End at: 2017-09-22 13:41:39  
Local clock offset: 17.229 ms  
Remote clock offset: -28.521 ms

# Below is generated by plot.py at 2017-09-22 15:20:20  
# Datalink statistics  
-- Total of 3 flows:  
Average throughput: 0.20 Mbit/s  
95th percentile per-packet one-way delay: 283.296 ms  
Loss rate: 5.62%  
-- Flow 1:  
Average throughput: 0.08 Mbit/s  
95th percentile per-packet one-way delay: 275.444 ms  
Loss rate: 6.56%  
-- Flow 2:  
Average throughput: 0.13 Mbit/s  
95th percentile per-packet one-way delay: 270.198 ms  
Loss rate: 3.81%  
-- Flow 3:  
Average throughput: 0.10 Mbit/s  
95th percentile per-packet one-way delay: 300.369 ms  
Loss rate: 7.88%

## Run 1: Report of Sprout — Data Link



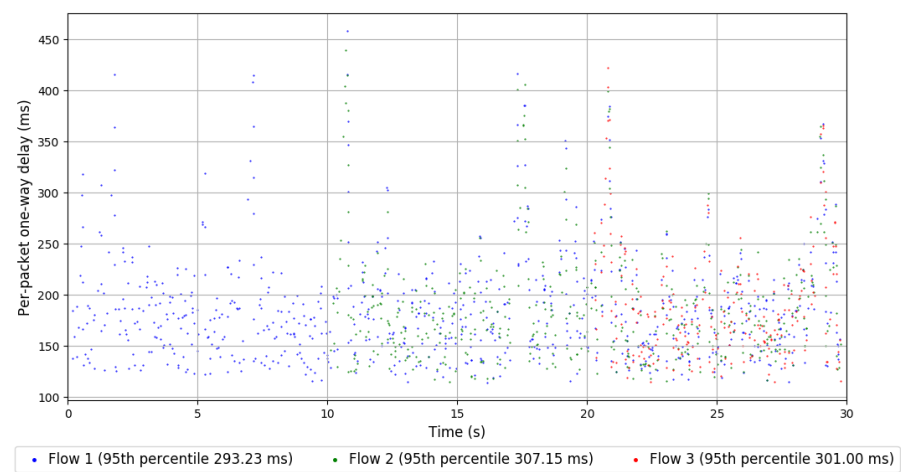
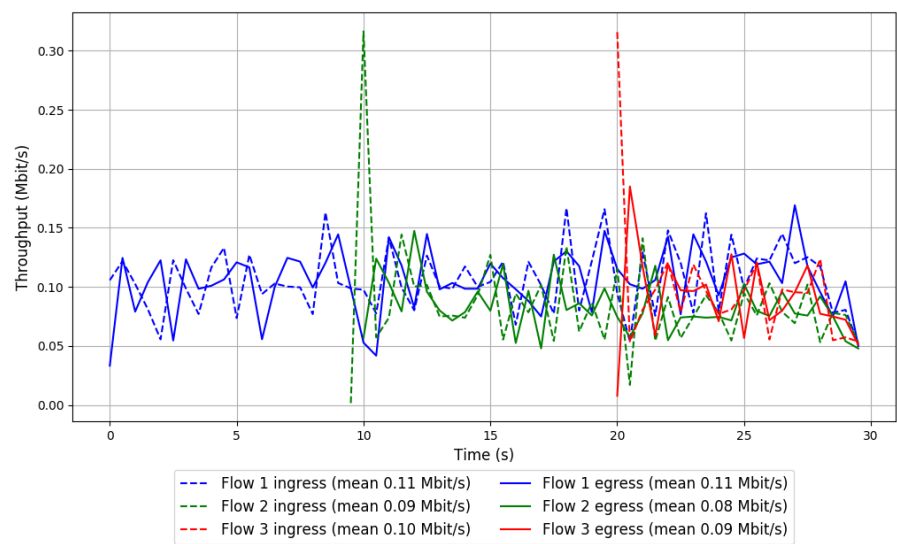
Run 2: Statistics of Sprout

Start at: 2017-09-22 14:00:29  
End at: 2017-09-22 14:00:59  
Local clock offset: -2.601 ms  
Remote clock offset: -44.868 ms

# Below is generated by plot.py at 2017-09-22 15:20:20  
# Datalink statistics  
-- Total of 3 flows:  
Average throughput: 0.19 Mbit/s  
95th percentile per-packet one-way delay: 300.958 ms  
Loss rate: 3.51%  
-- Flow 1:  
Average throughput: 0.11 Mbit/s  
95th percentile per-packet one-way delay: 293.228 ms  
Loss rate: 0.77%  
-- Flow 2:  
Average throughput: 0.08 Mbit/s  
95th percentile per-packet one-way delay: 307.151 ms  
Loss rate: 5.62%  
-- Flow 3:  
Average throughput: 0.09 Mbit/s  
95th percentile per-packet one-way delay: 301.003 ms  
Loss rate: 8.64%



Run 2: Report of Sprout — Data Link

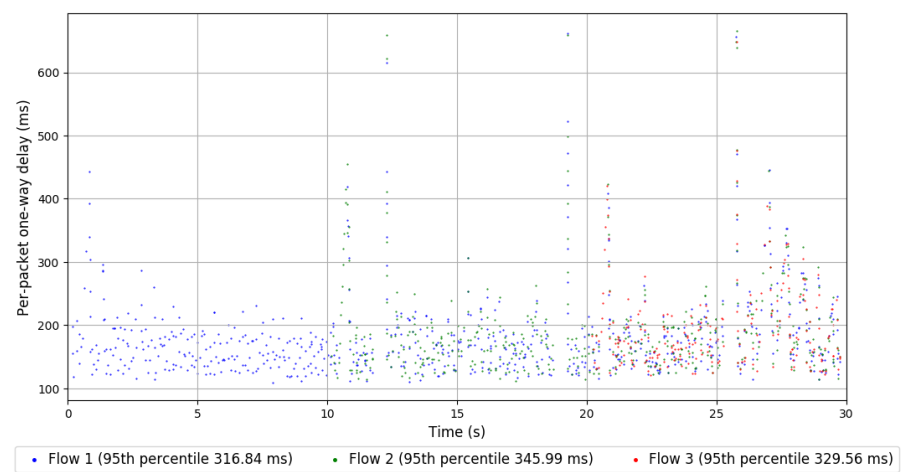
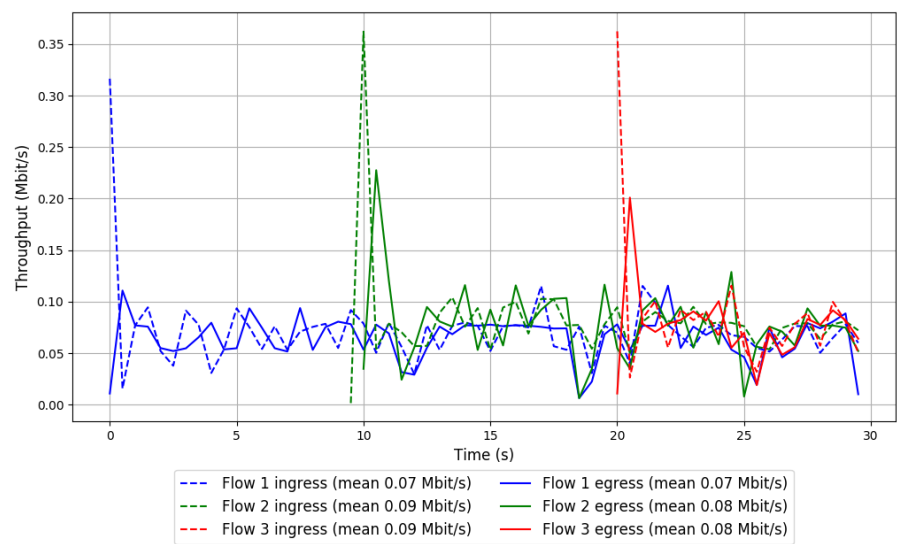


### Run 3: Statistics of Sprout

Start at: 2017-09-22 14:19:12  
End at: 2017-09-22 14:19:42  
Local clock offset: 17.275 ms  
Remote clock offset: -23.208 ms

```
# Below is generated by plot.py at 2017-09-22 15:20:20
# Datalink statistics
-- Total of 3 flows:
Average throughput: 0.14 Mbit/s
95th percentile per-packet one-way delay: 332.532 ms
Loss rate: 9.68%
-- Flow 1:
Average throughput: 0.07 Mbit/s
95th percentile per-packet one-way delay: 316.841 ms
Loss rate: 9.63%
-- Flow 2:
Average throughput: 0.08 Mbit/s
95th percentile per-packet one-way delay: 345.989 ms
Loss rate: 7.66%
-- Flow 3:
Average throughput: 0.08 Mbit/s
95th percentile per-packet one-way delay: 329.557 ms
Loss rate: 13.72%
```

Run 3: Report of Sprout — Data Link

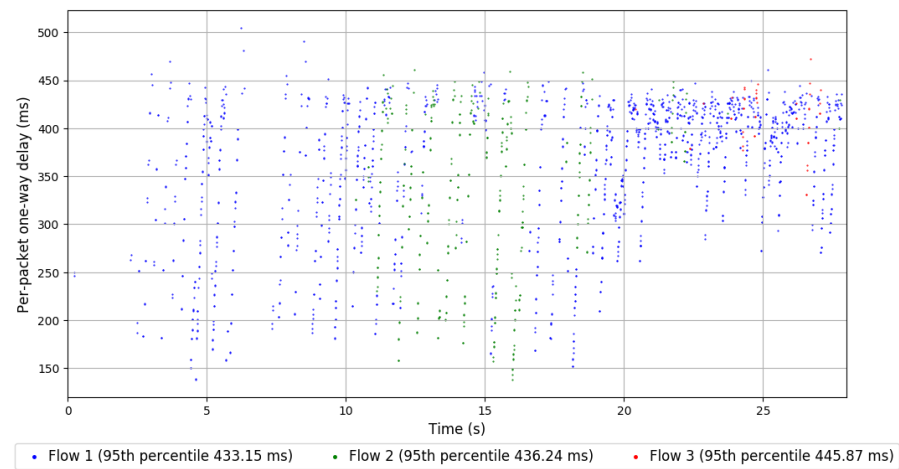
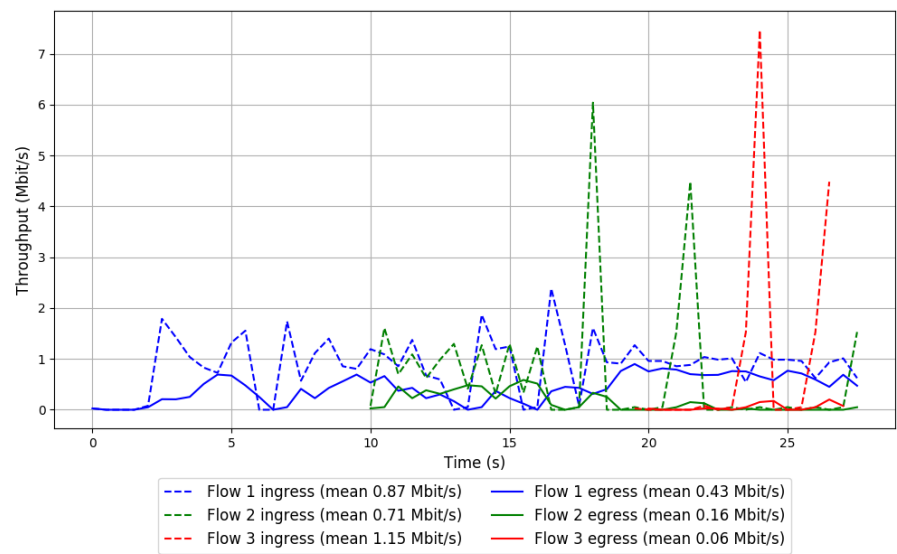


Run 1: Statistics of TaoVA-100x

Start at: 2017-09-22 13:31:47  
End at: 2017-09-22 13:32:17  
Local clock offset: -2.562 ms  
Remote clock offset: -44.135 ms

# Below is generated by plot.py at 2017-09-22 15:20:20  
# Datalink statistics  
-- Total of 3 flows:  
Average throughput: 0.55 Mbit/s  
95th percentile per-packet one-way delay: 434.452 ms  
Loss rate: 66.05%  
-- Flow 1:  
Average throughput: 0.43 Mbit/s  
95th percentile per-packet one-way delay: 433.150 ms  
Loss rate: 51.08%  
-- Flow 2:  
Average throughput: 0.16 Mbit/s  
95th percentile per-packet one-way delay: 436.243 ms  
Loss rate: 77.34%  
-- Flow 3:  
Average throughput: 0.06 Mbit/s  
95th percentile per-packet one-way delay: 445.869 ms  
Loss rate: 94.91%

Run 1: Report of TaoVA-100x — Data Link

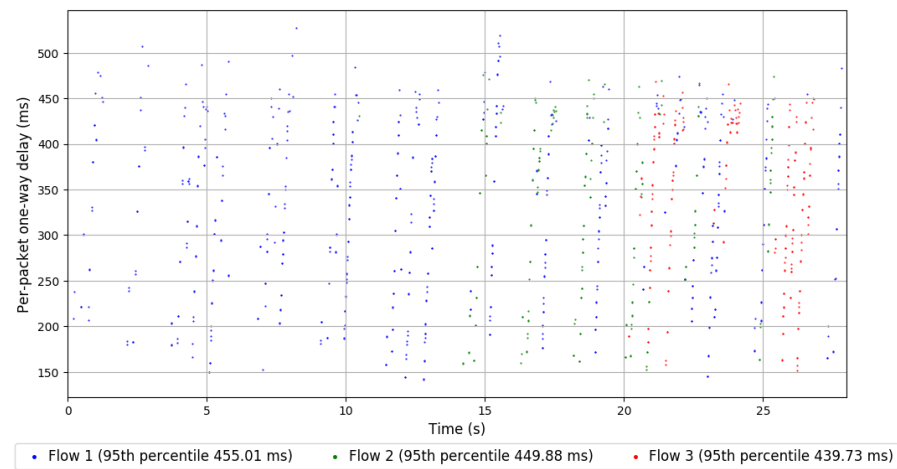
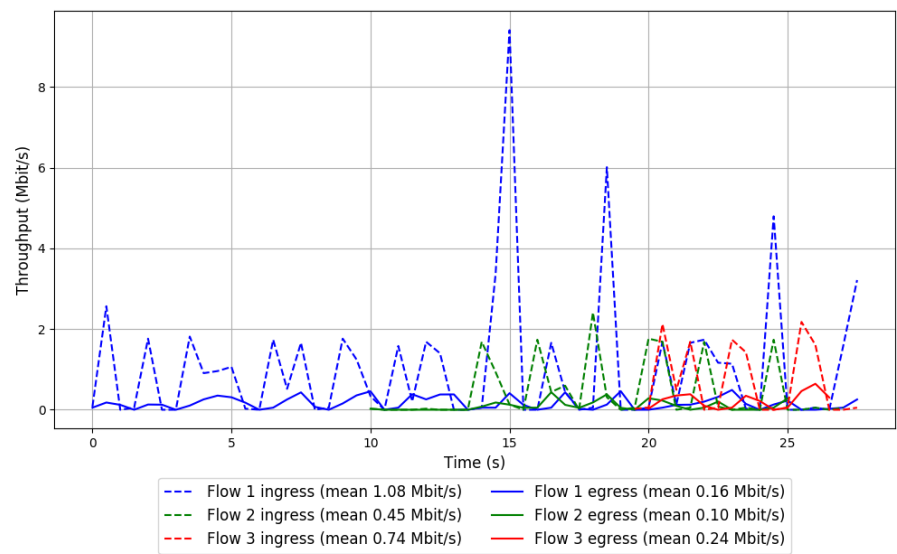


Run 2: Statistics of TaoVA-100x

Start at: 2017-09-22 13:51:01  
End at: 2017-09-22 13:51:31  
Local clock offset: -2.653 ms  
Remote clock offset: -46.719 ms

# Below is generated by plot.py at 2017-09-22 15:20:20  
# Datalink statistics  
-- Total of 3 flows:  
Average throughput: 0.27 Mbit/s  
95th percentile per-packet one-way delay: 453.322 ms  
Loss rate: 82.65%  
-- Flow 1:  
Average throughput: 0.16 Mbit/s  
95th percentile per-packet one-way delay: 455.007 ms  
Loss rate: 85.06%  
-- Flow 2:  
Average throughput: 0.10 Mbit/s  
95th percentile per-packet one-way delay: 449.883 ms  
Loss rate: 81.18%  
-- Flow 3:  
Average throughput: 0.24 Mbit/s  
95th percentile per-packet one-way delay: 439.731 ms  
Loss rate: 72.13%

Run 2: Report of TaoVA-100x — Data Link



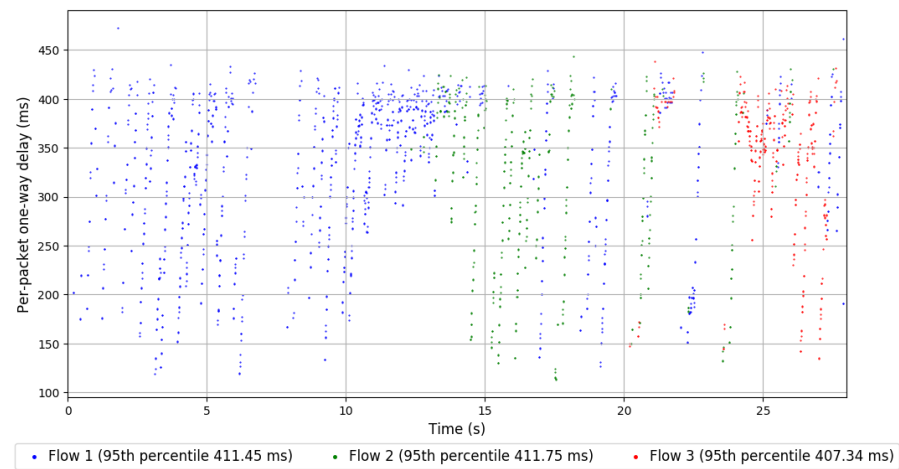
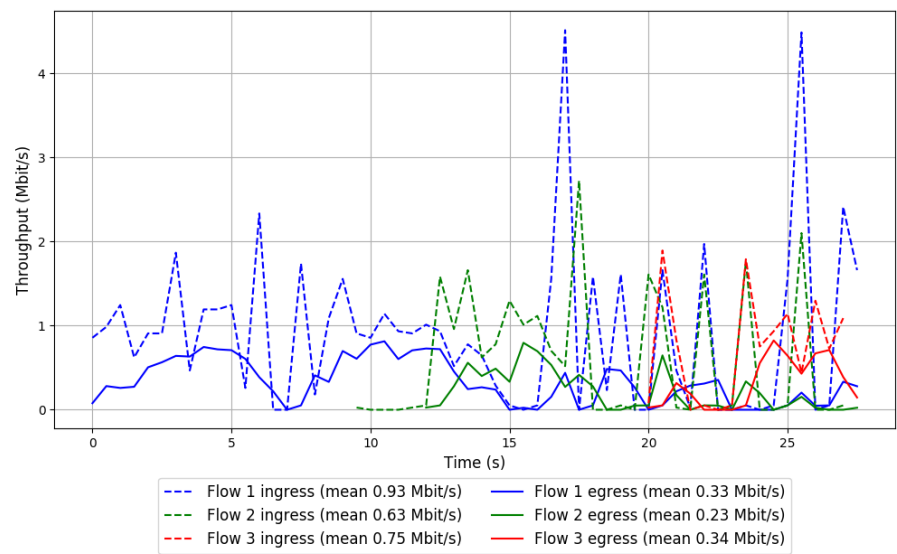
Run 3: Statistics of TaoVA-100x

Start at: 2017-09-22 14:10:13  
End at: 2017-09-22 14:10:43  
Local clock offset: 17.91 ms  
Remote clock offset: -1.724 ms

# Below is generated by plot.py at 2017-09-22 15:20:20  
# Datalink statistics  
-- Total of 3 flows:  
Average throughput: 0.55 Mbit/s  
95th percentile per-packet one-way delay: 411.059 ms  
Loss rate: 64.04%  
-- Flow 1:  
Average throughput: 0.33 Mbit/s  
95th percentile per-packet one-way delay: 411.453 ms  
Loss rate: 64.42%  
-- Flow 2:  
Average throughput: 0.23 Mbit/s  
95th percentile per-packet one-way delay: 411.755 ms  
Loss rate: 67.88%  
-- Flow 3:  
Average throughput: 0.34 Mbit/s  
95th percentile per-packet one-way delay: 407.342 ms  
Loss rate: 54.81%



Run 3: Report of TaoVA-100x — Data Link

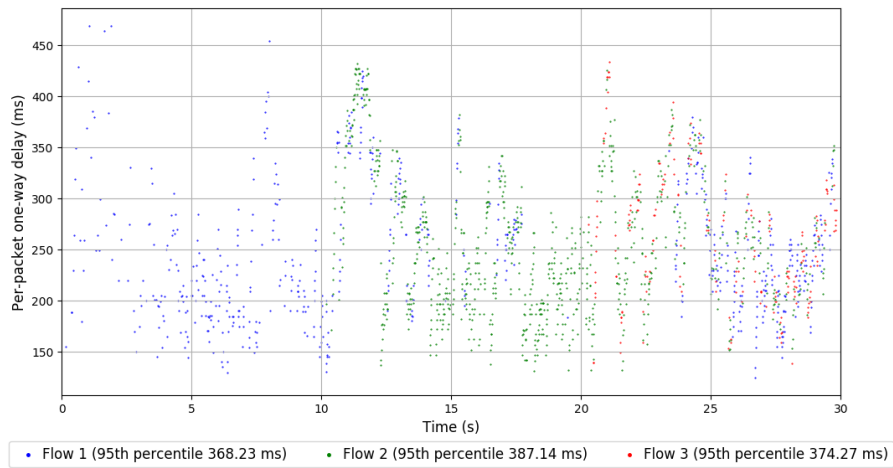
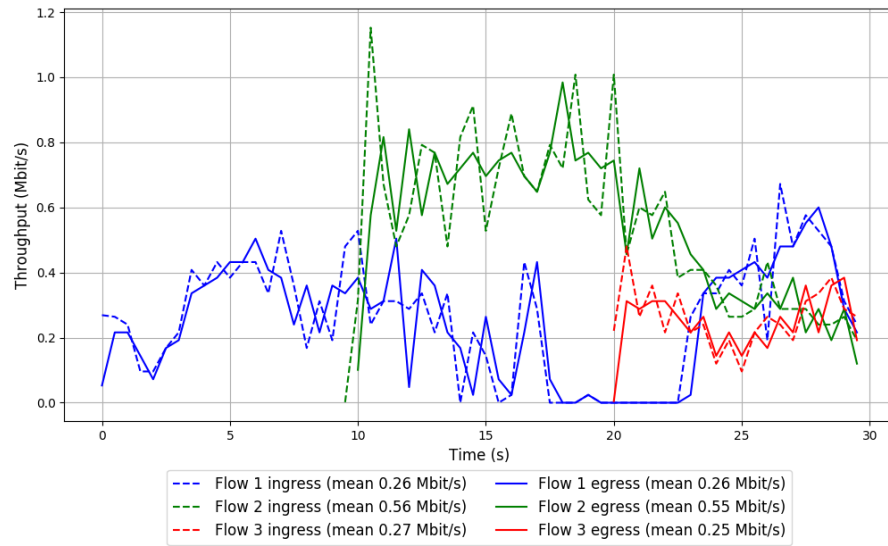


Run 1: Statistics of TCP Vegas

Start at: 2017-09-22 13:34:23  
End at: 2017-09-22 13:34:53  
Local clock offset: -2.522 ms  
Remote clock offset: -44.047 ms

# Below is generated by plot.py at 2017-09-22 15:20:20  
# Datalink statistics  
-- Total of 3 flows:  
Average throughput: 0.70 Mbit/s  
95th percentile per-packet one-way delay: 377.272 ms  
Loss rate: 2.91%  
-- Flow 1:  
Average throughput: 0.26 Mbit/s  
95th percentile per-packet one-way delay: 368.234 ms  
Loss rate: 3.09%  
-- Flow 2:  
Average throughput: 0.55 Mbit/s  
95th percentile per-packet one-way delay: 387.140 ms  
Loss rate: 1.74%  
-- Flow 3:  
Average throughput: 0.25 Mbit/s  
95th percentile per-packet one-way delay: 374.269 ms  
Loss rate: 7.33%

# Run 1: Report of TCP Vegas — Data Link

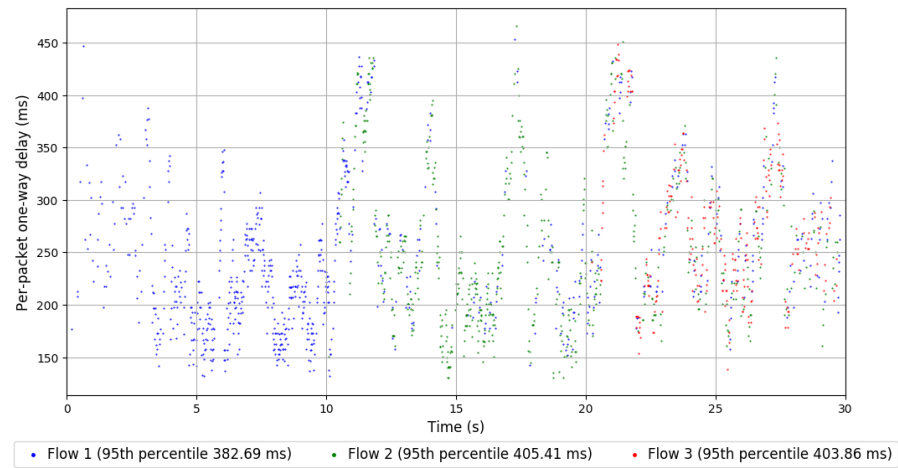
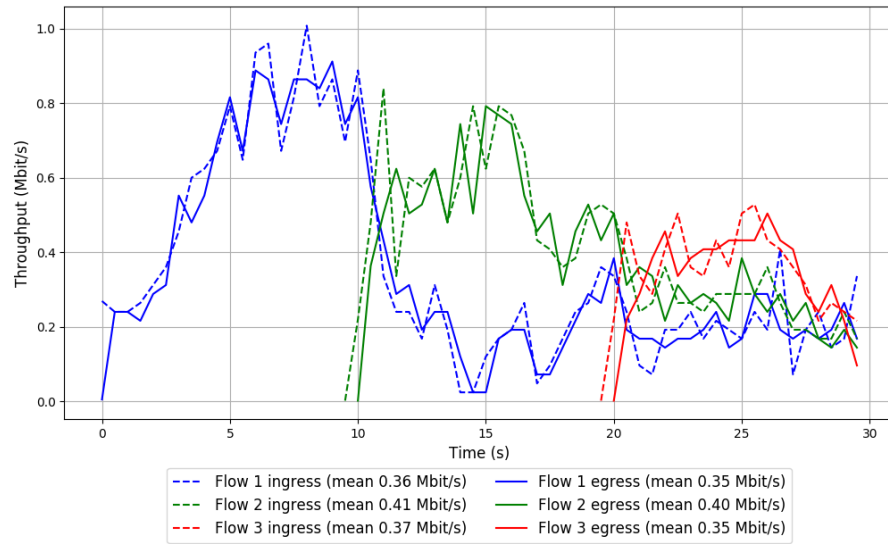


Run 2: Statistics of TCP Vegas

Start at: 2017-09-22 13:53:43  
End at: 2017-09-22 13:54:13  
Local clock offset: -1.385 ms  
Remote clock offset: -45.201 ms

# Below is generated by plot.py at 2017-09-22 15:20:20  
# Datalink statistics  
-- Total of 3 flows:  
Average throughput: 0.73 Mbit/s  
95th percentile per-packet one-way delay: 397.297 ms  
Loss rate: 3.90%  
-- Flow 1:  
Average throughput: 0.35 Mbit/s  
95th percentile per-packet one-way delay: 382.685 ms  
Loss rate: 2.81%  
-- Flow 2:  
Average throughput: 0.40 Mbit/s  
95th percentile per-packet one-way delay: 405.411 ms  
Loss rate: 3.79%  
-- Flow 3:  
Average throughput: 0.35 Mbit/s  
95th percentile per-packet one-way delay: 403.864 ms  
Loss rate: 7.33%

## Run 2: Report of TCP Vegas — Data Link

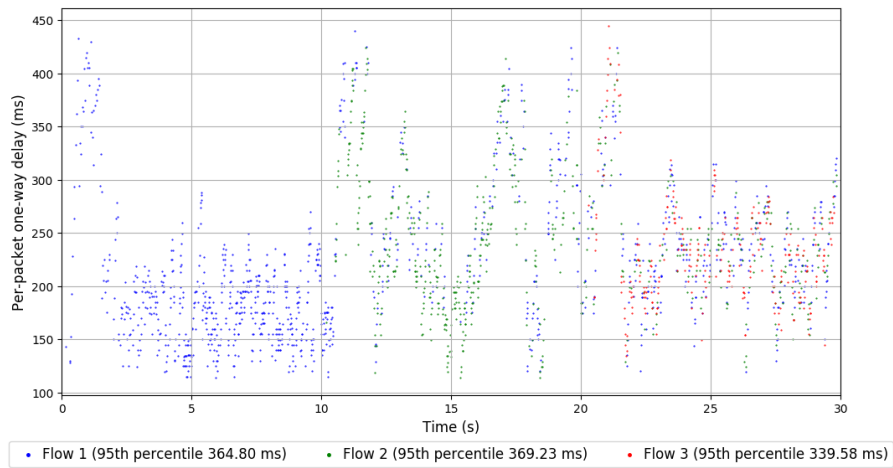
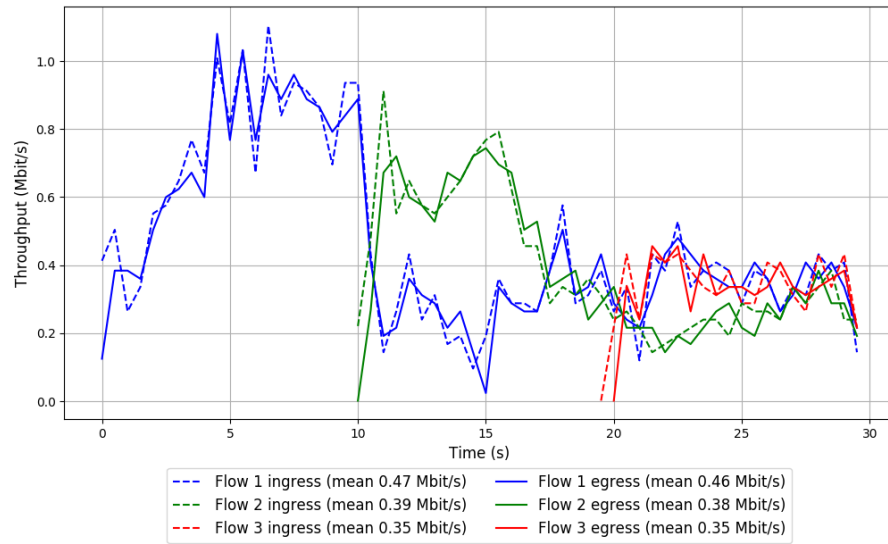


Run 3: Statistics of TCP Vegas

Start at: 2017-09-22 14:12:47  
End at: 2017-09-22 14:13:17  
Local clock offset: -2.45 ms  
Remote clock offset: -36.152 ms

# Below is generated by plot.py at 2017-09-22 15:20:20  
# Datalink statistics  
-- Total of 3 flows:  
Average throughput: 0.83 Mbit/s  
95th percentile per-packet one-way delay: 364.803 ms  
Loss rate: 2.80%  
-- Flow 1:  
Average throughput: 0.46 Mbit/s  
95th percentile per-packet one-way delay: 364.803 ms  
Loss rate: 2.06%  
-- Flow 2:  
Average throughput: 0.38 Mbit/s  
95th percentile per-packet one-way delay: 369.234 ms  
Loss rate: 3.08%  
-- Flow 3:  
Average throughput: 0.35 Mbit/s  
95th percentile per-packet one-way delay: 339.584 ms  
Loss rate: 5.21%

### Run 3: Report of TCP Vegas — Data Link



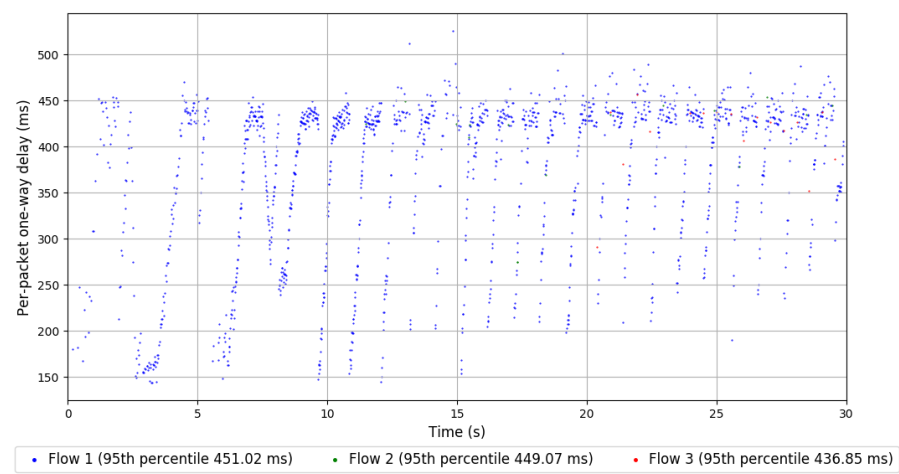
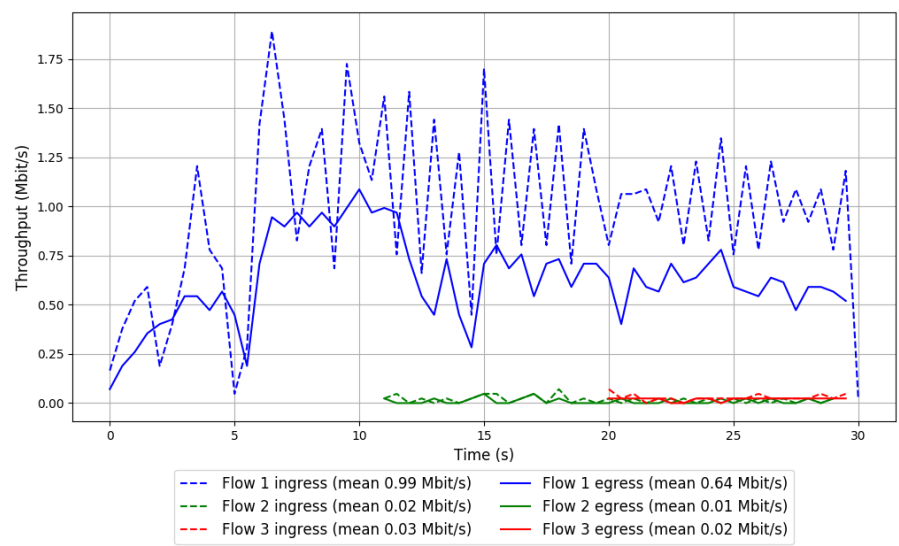
Run 1: Statistics of Verus

Start at: 2017-09-22 13:30:28  
End at: 2017-09-22 13:30:58  
Local clock offset: 16.25 ms  
Remote clock offset: -37.786 ms

# Below is generated by plot.py at 2017-09-22 15:20:20  
# Datalink statistics  
-- Total of 3 flows:  
Average throughput: 0.65 Mbit/s  
95th percentile per-packet one-way delay: 451.023 ms  
Loss rate: 36.02%  
-- Flow 1:  
Average throughput: 0.64 Mbit/s  
95th percentile per-packet one-way delay: 451.023 ms  
Loss rate: 36.03%  
-- Flow 2:  
Average throughput: 0.01 Mbit/s  
95th percentile per-packet one-way delay: 449.075 ms  
Loss rate: 40.74%  
-- Flow 3:  
Average throughput: 0.02 Mbit/s  
95th percentile per-packet one-way delay: 436.850 ms  
Loss rate: 29.17%



Run 1: Report of Verus — Data Link

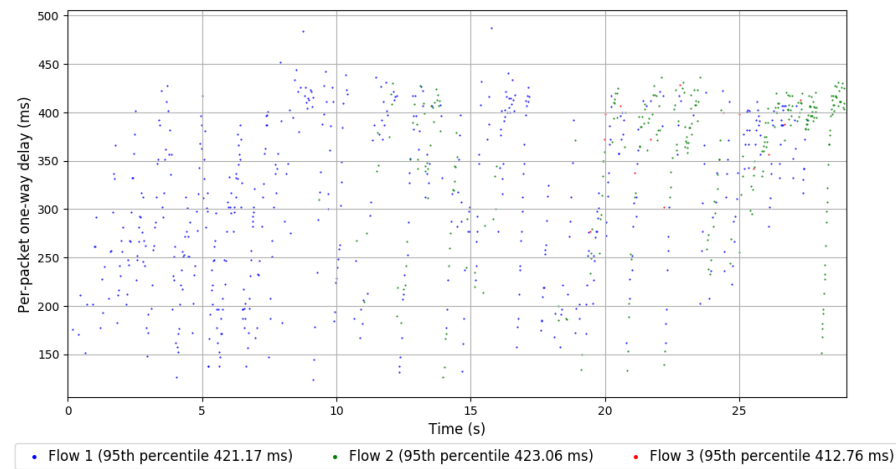
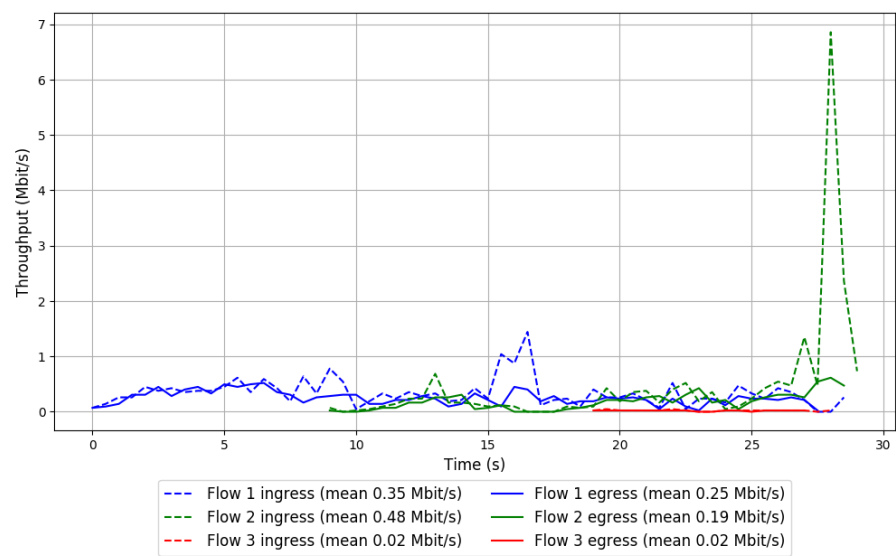


Run 2: Statistics of Verus

Start at: 2017-09-22 13:49:42  
End at: 2017-09-22 13:50:12  
Local clock offset: -2.483 ms  
Remote clock offset: -20.094 ms

# Below is generated by plot.py at 2017-09-22 15:20:20  
# Datalink statistics  
-- Total of 3 flows:  
Average throughput: 0.37 Mbit/s  
95th percentile per-packet one-way delay: 421.487 ms  
Loss rate: 45.51%  
-- Flow 1:  
Average throughput: 0.25 Mbit/s  
95th percentile per-packet one-way delay: 421.165 ms  
Loss rate: 30.05%  
-- Flow 2:  
Average throughput: 0.19 Mbit/s  
95th percentile per-packet one-way delay: 423.063 ms  
Loss rate: 62.10%  
-- Flow 3:  
Average throughput: 0.02 Mbit/s  
95th percentile per-packet one-way delay: 412.762 ms  
Loss rate: 22.22%

Run 2: Report of Verus — Data Link

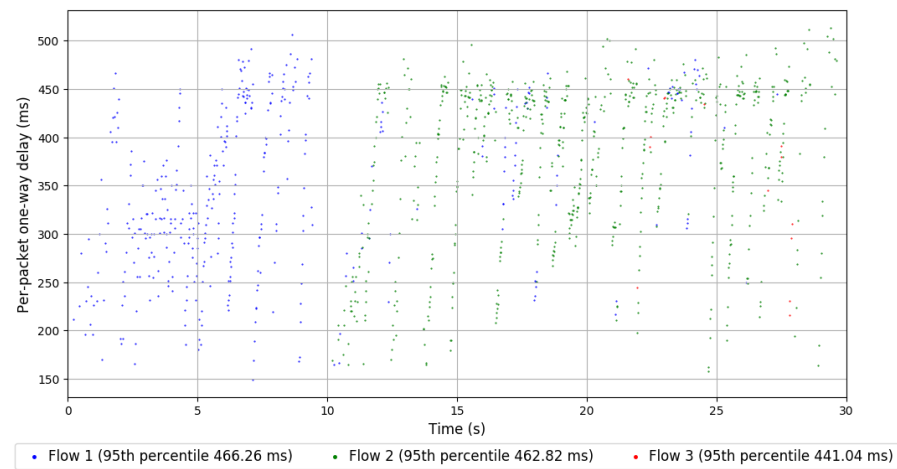
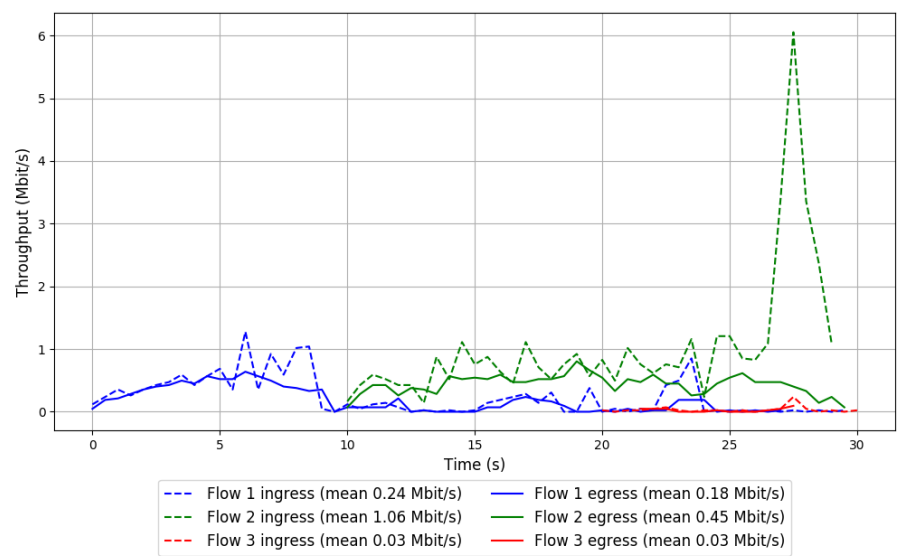


Run 3: Statistics of Verus

Start at: 2017-09-22 14:08:51  
End at: 2017-09-22 14:09:21  
Local clock offset: 19.243 ms  
Remote clock offset: -43.255 ms

# Below is generated by plot.py at 2017-09-22 15:20:20  
# Datalink statistics  
-- Total of 3 flows:  
Average throughput: 0.47 Mbit/s  
95th percentile per-packet one-way delay: 465.203 ms  
Loss rate: 50.32%  
-- Flow 1:  
Average throughput: 0.18 Mbit/s  
95th percentile per-packet one-way delay: 466.258 ms  
Loss rate: 30.92%  
-- Flow 2:  
Average throughput: 0.45 Mbit/s  
95th percentile per-packet one-way delay: 462.823 ms  
Loss rate: 57.18%  
-- Flow 3:  
Average throughput: 0.03 Mbit/s  
95th percentile per-packet one-way delay: 441.039 ms  
Loss rate: 51.72%

Run 3: Report of Verus — Data Link

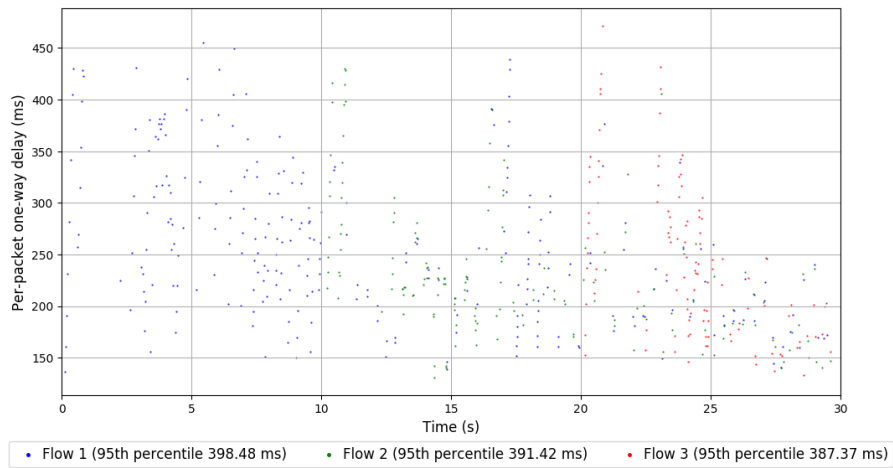
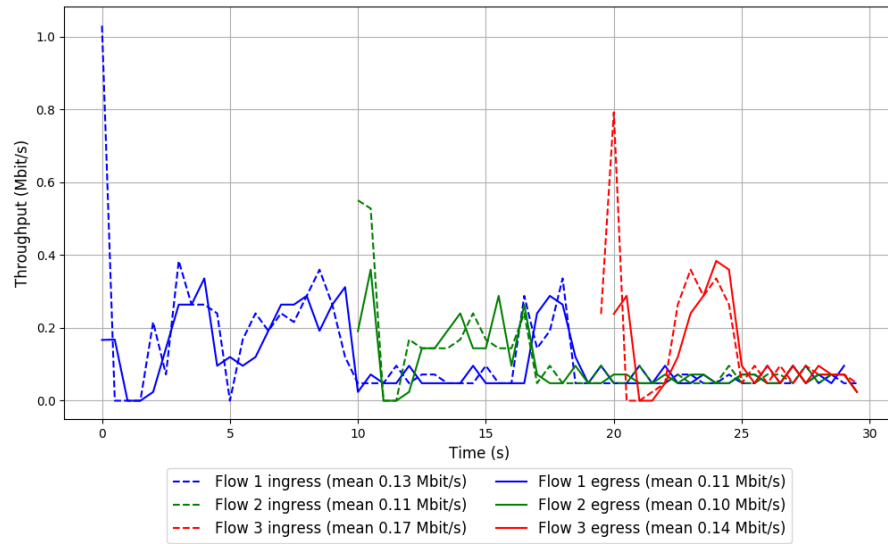


Run 1: Statistics of Indigo

Start at: 2017-09-22 13:46:56  
End at: 2017-09-22 13:47:26  
Local clock offset: -2.493 ms  
Remote clock offset: -39.054 ms

# Below is generated by plot.py at 2017-09-22 15:20:20  
# Datalink statistics  
-- Total of 3 flows:  
Average throughput: 0.22 Mbit/s  
95th percentile per-packet one-way delay: 397.261 ms  
Loss rate: 14.89%  
-- Flow 1:  
Average throughput: 0.11 Mbit/s  
95th percentile per-packet one-way delay: 398.476 ms  
Loss rate: 14.14%  
-- Flow 2:  
Average throughput: 0.10 Mbit/s  
95th percentile per-packet one-way delay: 391.415 ms  
Loss rate: 12.63%  
-- Flow 3:  
Average throughput: 0.14 Mbit/s  
95th percentile per-packet one-way delay: 387.370 ms  
Loss rate: 19.57%

# Run 1: Report of Indigo — Data Link



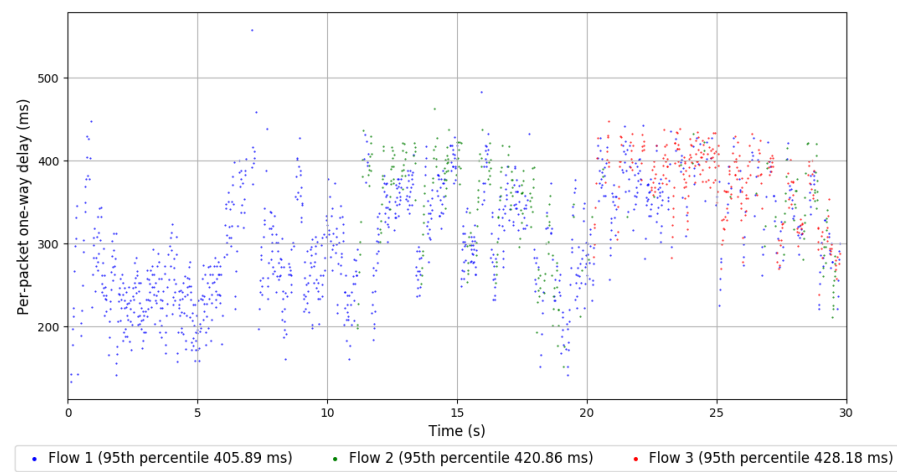
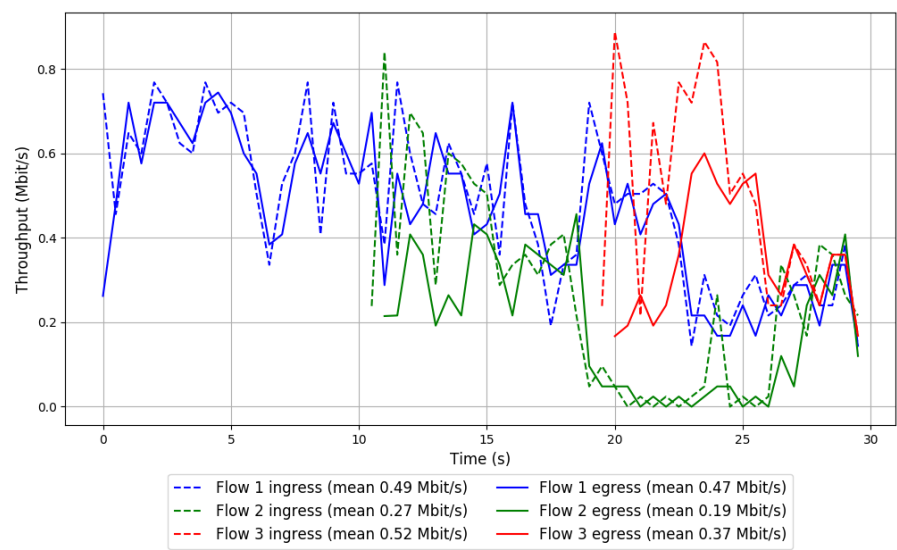
Run 2: Statistics of Indigo

Start at: 2017-09-22 14:06:05  
End at: 2017-09-22 14:06:35  
Local clock offset: -1.249 ms  
Remote clock offset: -41.161 ms

# Below is generated by plot.py at 2017-09-22 15:20:20  
# Datalink statistics  
-- Total of 3 flows:  
Average throughput: 0.71 Mbit/s  
95th percentile per-packet one-way delay: 417.956 ms  
Loss rate: 15.32%  
-- Flow 1:  
Average throughput: 0.47 Mbit/s  
95th percentile per-packet one-way delay: 405.890 ms  
Loss rate: 4.30%  
-- Flow 2:  
Average throughput: 0.19 Mbit/s  
95th percentile per-packet one-way delay: 420.855 ms  
Loss rate: 30.83%  
-- Flow 3:  
Average throughput: 0.37 Mbit/s  
95th percentile per-packet one-way delay: 428.175 ms  
Loss rate: 31.15%



Run 2: Report of Indigo — Data Link

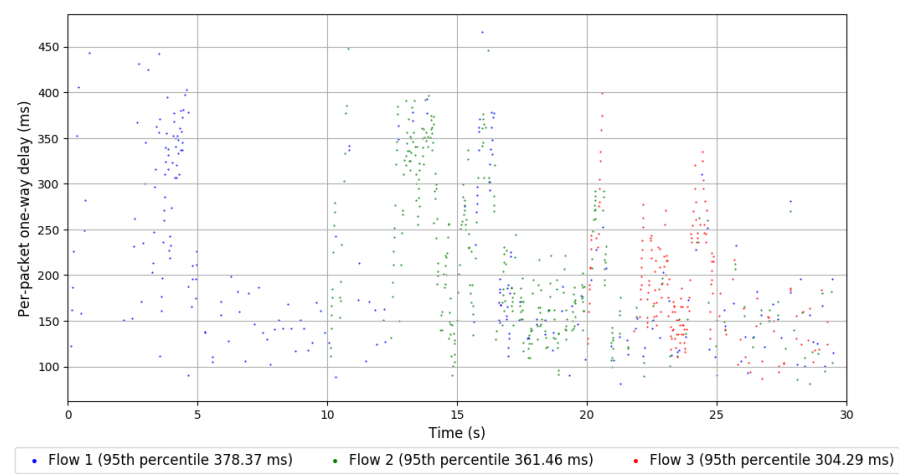
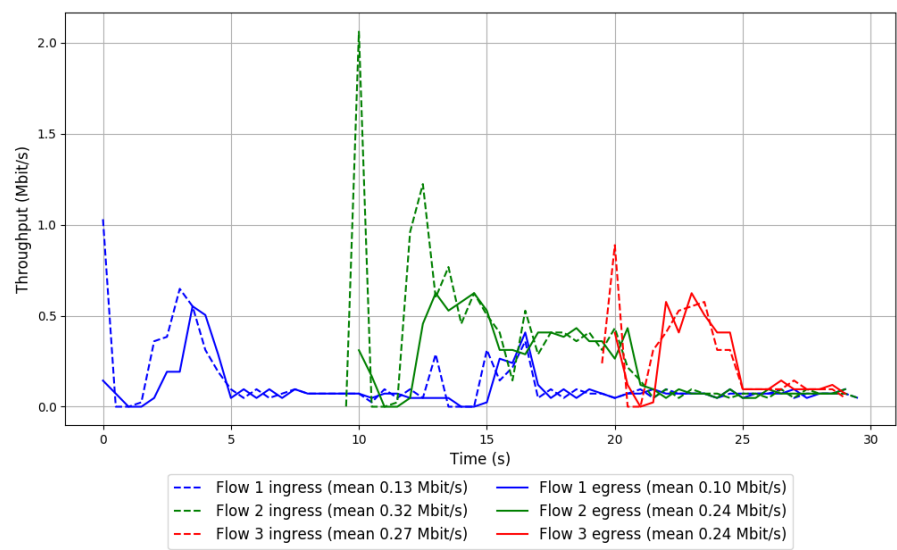


Run 3: Statistics of Indigo

Start at: 2017-09-22 14:24:21  
End at: 2017-09-22 14:24:51  
Local clock offset: -0.93 ms  
Remote clock offset: -1.423 ms

# Below is generated by plot.py at 2017-09-22 15:20:20  
# Datalink statistics  
-- Total of 3 flows:  
Average throughput: 0.33 Mbit/s  
95th percentile per-packet one-way delay: 368.589 ms  
Loss rate: 22.84%  
-- Flow 1:  
Average throughput: 0.10 Mbit/s  
95th percentile per-packet one-way delay: 378.371 ms  
Loss rate: 23.45%  
-- Flow 2:  
Average throughput: 0.24 Mbit/s  
95th percentile per-packet one-way delay: 361.460 ms  
Loss rate: 26.79%  
-- Flow 3:  
Average throughput: 0.24 Mbit/s  
95th percentile per-packet one-way delay: 304.286 ms  
Loss rate: 12.02%

Run 3: Report of Indigo — Data Link

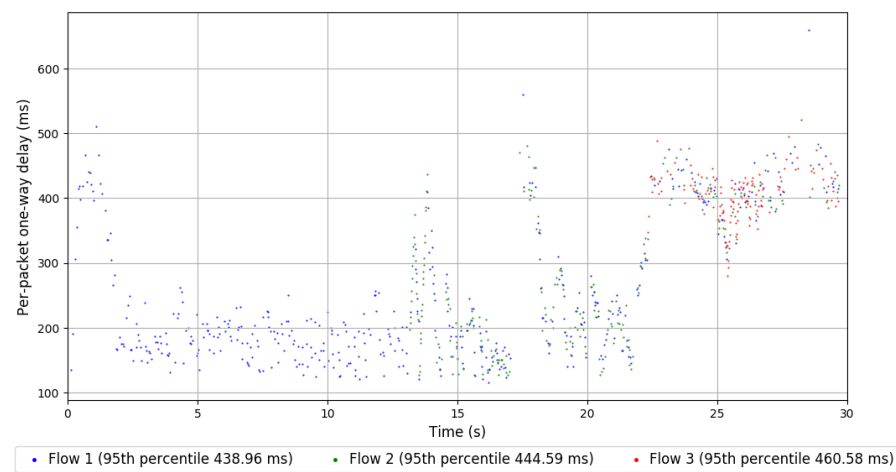
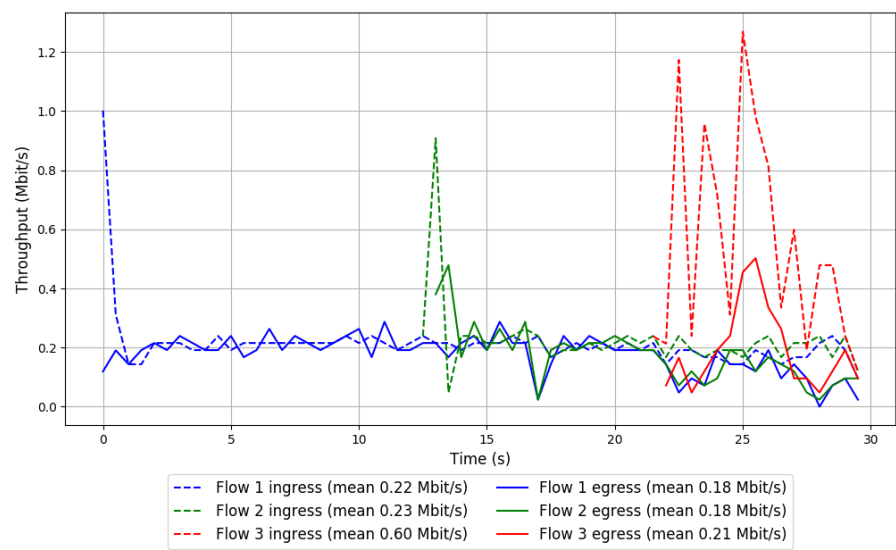


Run 1: Statistics of Indigo-cellular

Start at: 2017-09-22 13:39:41  
End at: 2017-09-22 13:40:11  
Local clock offset: -1.426 ms  
Remote clock offset: -36.436 ms

# Below is generated by plot.py at 2017-09-22 15:20:20  
# Datalink statistics  
-- Total of 3 flows:  
Average throughput: 0.33 Mbit/s  
95th percentile per-packet one-way delay: 445.972 ms  
Loss rate: 34.90%  
-- Flow 1:  
Average throughput: 0.18 Mbit/s  
95th percentile per-packet one-way delay: 438.963 ms  
Loss rate: 17.34%  
-- Flow 2:  
Average throughput: 0.18 Mbit/s  
95th percentile per-packet one-way delay: 444.587 ms  
Loss rate: 24.70%  
-- Flow 3:  
Average throughput: 0.21 Mbit/s  
95th percentile per-packet one-way delay: 460.583 ms  
Loss rate: 67.52%

Run 1: Report of Indigo-cellular — Data Link

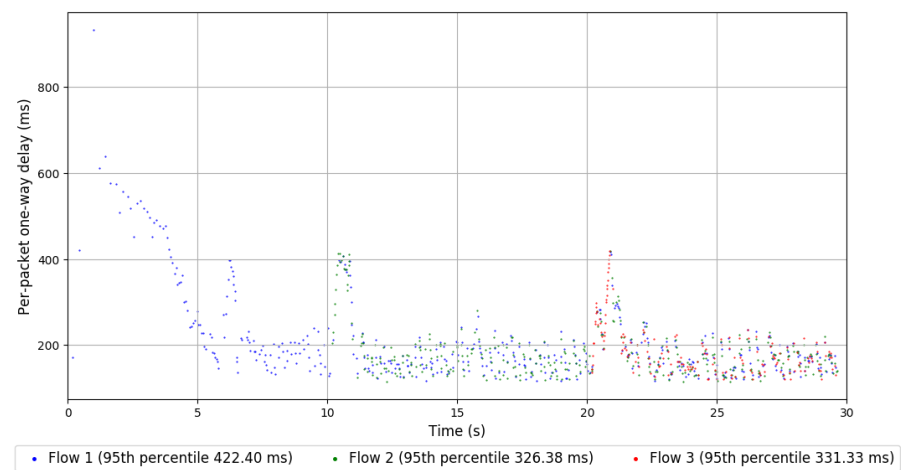
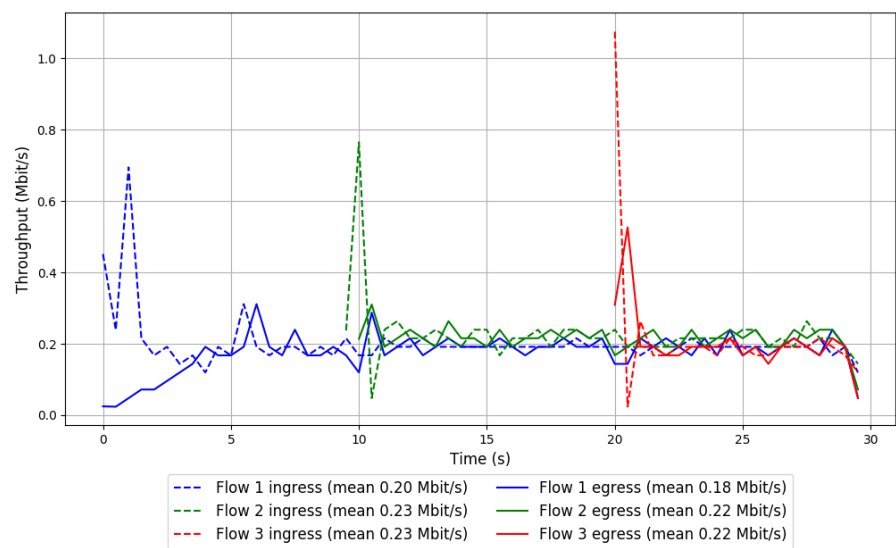


Run 2: Statistics of Indigo-cellular

Start at: 2017-09-22 13:59:11  
End at: 2017-09-22 13:59:41  
Local clock offset: -1.334 ms  
Remote clock offset: -36.959 ms

# Below is generated by plot.py at 2017-09-22 15:20:20  
# Datalink statistics  
-- Total of 3 flows:  
Average throughput: 0.39 Mbit/s  
95th percentile per-packet one-way delay: 384.882 ms  
Loss rate: 10.36%  
-- Flow 1:  
Average throughput: 0.18 Mbit/s  
95th percentile per-packet one-way delay: 422.398 ms  
Loss rate: 13.58%  
-- Flow 2:  
Average throughput: 0.22 Mbit/s  
95th percentile per-packet one-way delay: 326.381 ms  
Loss rate: 6.99%  
-- Flow 3:  
Average throughput: 0.22 Mbit/s  
95th percentile per-packet one-way delay: 331.326 ms  
Loss rate: 8.61%

Run 2: Report of Indigo-cellular — Data Link



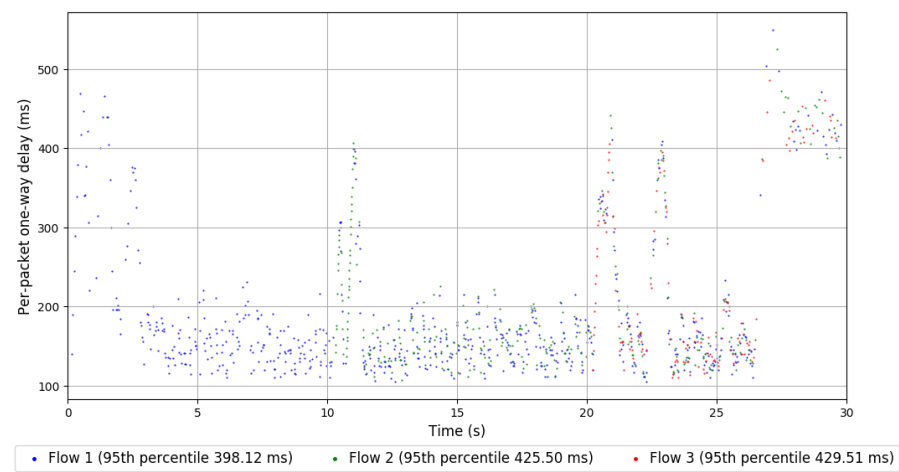
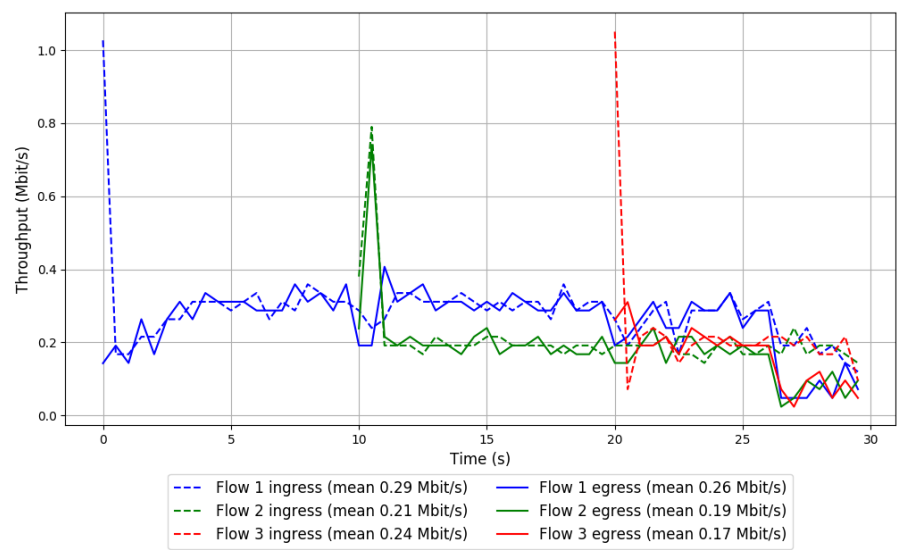
### Run 3: Statistics of Indigo-cellular

Start at: 2017-09-22 14:17:57  
End at: 2017-09-22 14:18:27  
Local clock offset: 17.635 ms  
Remote clock offset: -8.482 ms

```
# Below is generated by plot.py at 2017-09-22 15:20:20
# Datalink statistics
-- Total of 3 flows:
Average throughput: 0.44 Mbit/s
95th percentile per-packet one-way delay: 413.061 ms
Loss rate: 13.11%
-- Flow 1:
Average throughput: 0.26 Mbit/s
95th percentile per-packet one-way delay: 398.118 ms
Loss rate: 9.59%
-- Flow 2:
Average throughput: 0.19 Mbit/s
95th percentile per-packet one-way delay: 425.498 ms
Loss rate: 11.56%
-- Flow 3:
Average throughput: 0.17 Mbit/s
95th percentile per-packet one-way delay: 429.515 ms
Loss rate: 29.03%
```



Run 3: Report of Indigo-cellular — Data Link

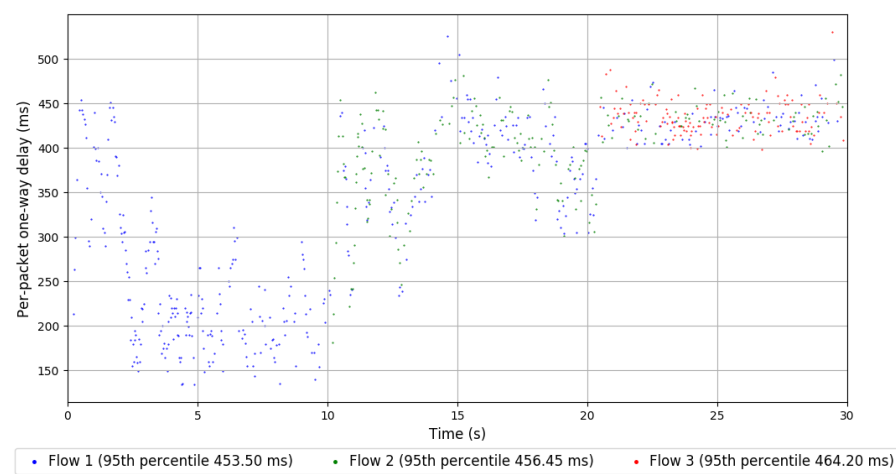
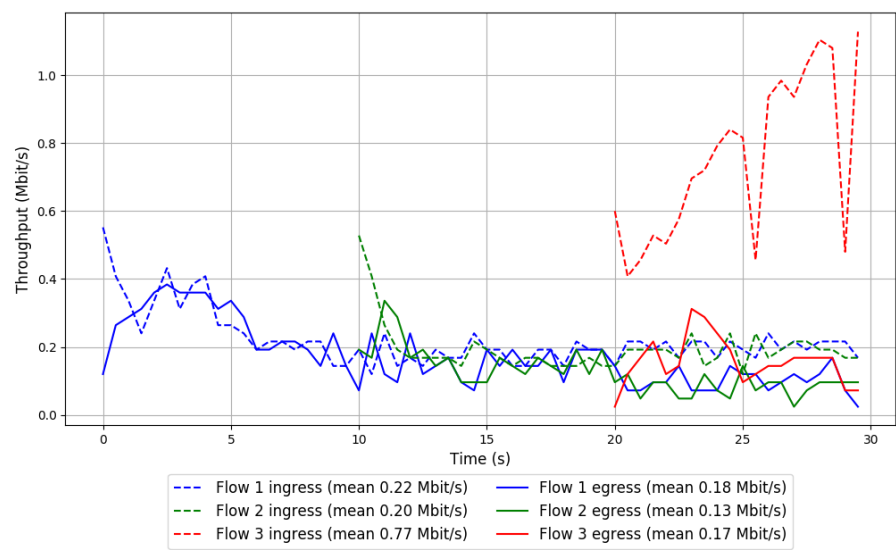


```
Run 1: Statistics of KohoCC

Start at: 2017-09-22 13:43:55
End at: 2017-09-22 13:44:25
Local clock offset: -1.618 ms
Remote clock offset: -42.137 ms

# Below is generated by plot.py at 2017-09-22 15:20:20
# Datalink statistics
-- Total of 3 flows:
Average throughput: 0.31 Mbit/s
95th percentile per-packet one-way delay: 458.074 ms
Loss rate: 48.87%
-- Flow 1:
Average throughput: 0.18 Mbit/s
95th percentile per-packet one-way delay: 453.502 ms
Loss rate: 22.24%
-- Flow 2:
Average throughput: 0.13 Mbit/s
95th percentile per-packet one-way delay: 456.449 ms
Loss rate: 35.60%
-- Flow 3:
Average throughput: 0.17 Mbit/s
95th percentile per-packet one-way delay: 464.200 ms
Loss rate: 79.14%
```

Run 1: Report of KohoCC — Data Link

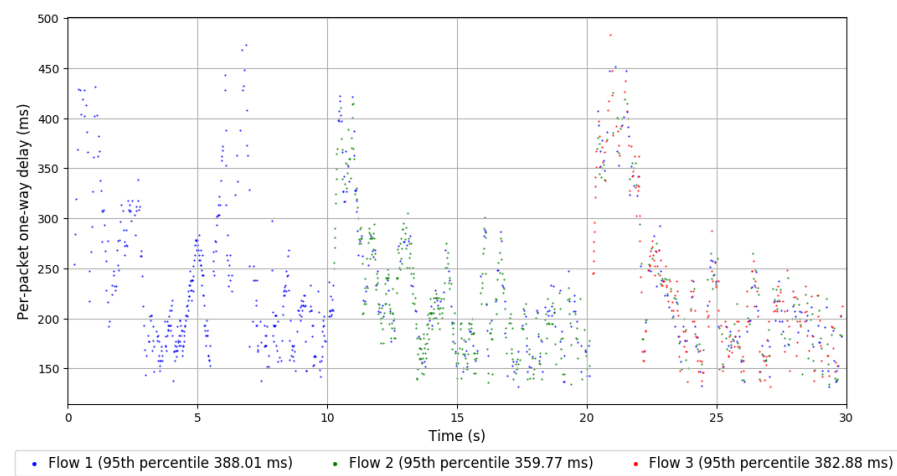
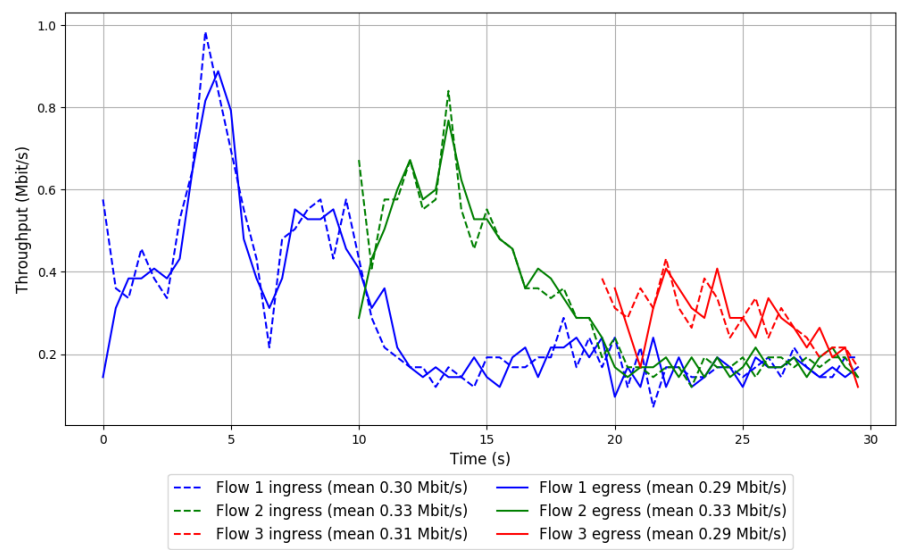


Run 2: Statistics of KohoCC

Start at: 2017-09-22 14:03:25  
End at: 2017-09-22 14:03:55  
Local clock offset: 17.948 ms  
Remote clock offset: -31.014 ms

# Below is generated by plot.py at 2017-09-22 15:20:20  
# Datalink statistics  
-- Total of 3 flows:  
Average throughput: 0.60 Mbit/s  
95th percentile per-packet one-way delay: 379.004 ms  
Loss rate: 3.71%  
-- Flow 1:  
Average throughput: 0.29 Mbit/s  
95th percentile per-packet one-way delay: 388.010 ms  
Loss rate: 3.51%  
-- Flow 2:  
Average throughput: 0.33 Mbit/s  
95th percentile per-packet one-way delay: 359.771 ms  
Loss rate: 1.84%  
-- Flow 3:  
Average throughput: 0.29 Mbit/s  
95th percentile per-packet one-way delay: 382.880 ms  
Loss rate: 8.27%

Run 2: Report of KohoCC — Data Link



Run 3: Statistics of KohoCC

Start at: 2017-09-22 14:21:53  
End at: 2017-09-22 14:22:23  
Local clock offset: -1.123 ms  
Remote clock offset: -23.305 ms

# Below is generated by plot.py at 2017-09-22 15:20:20  
# Datalink statistics  
-- Total of 3 flows:  
Average throughput: 0.48 Mbit/s  
95th percentile per-packet one-way delay: 417.947 ms  
Loss rate: 11.60%  
-- Flow 1:  
Average throughput: 0.24 Mbit/s  
95th percentile per-packet one-way delay: 415.171 ms  
Loss rate: 8.53%  
-- Flow 2:  
Average throughput: 0.27 Mbit/s  
95th percentile per-packet one-way delay: 407.851 ms  
Loss rate: 9.88%  
-- Flow 3:  
Average throughput: 0.20 Mbit/s  
95th percentile per-packet one-way delay: 437.587 ms  
Loss rate: 24.77%

Run 3: Report of KohoCC — Data Link

