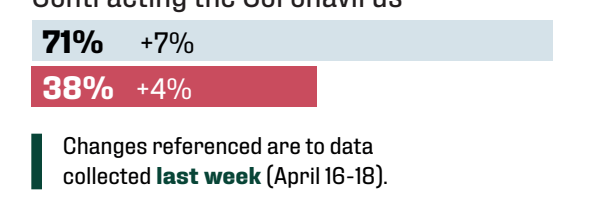
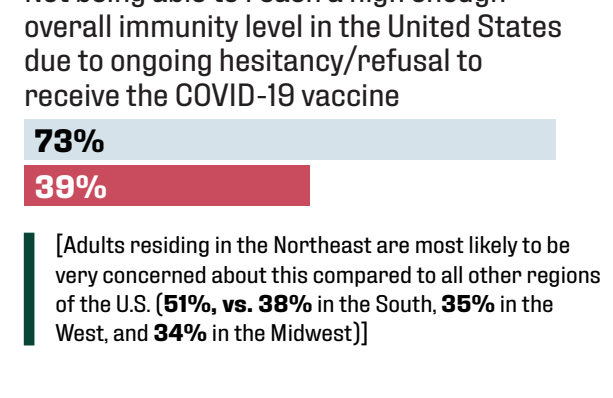
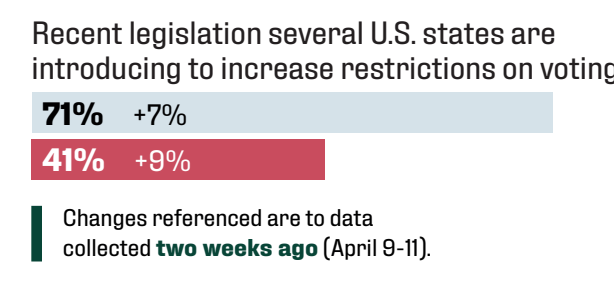
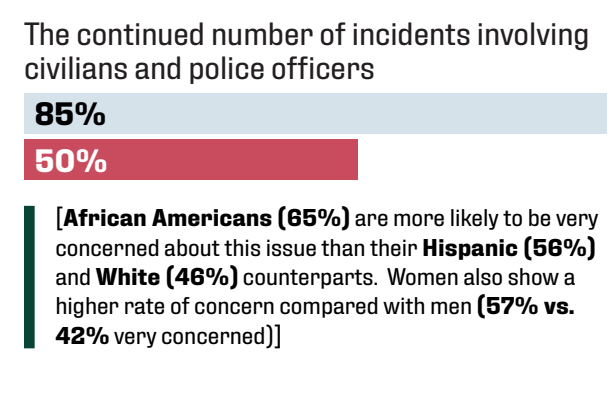


CURRENT
EVENTS

How concerned are you about these issues?

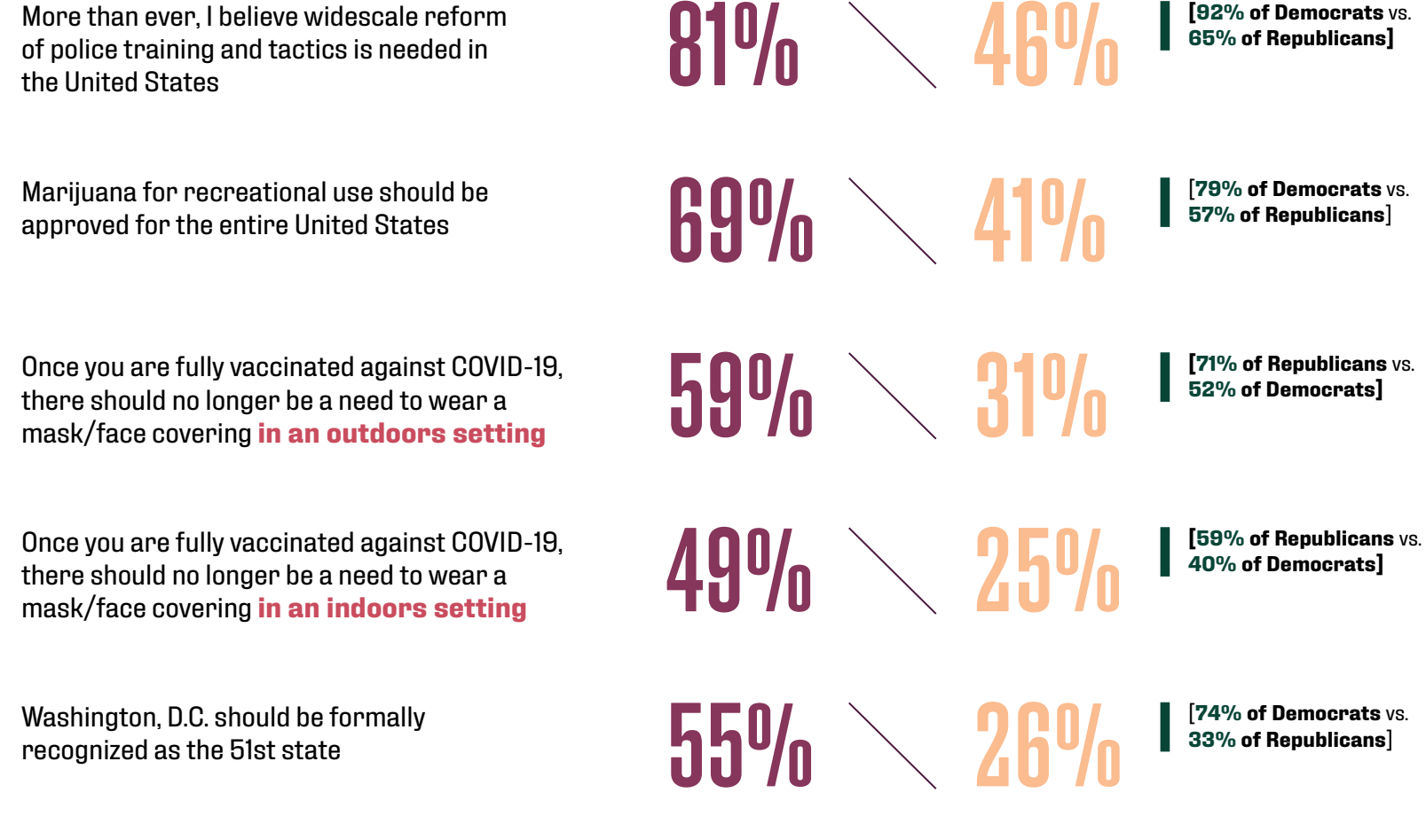
Key Total Concerned Very Concerned



Below are several topics that have been discussed and debated a lot recently. To what extent do you agree or disagree with each statement related to them?

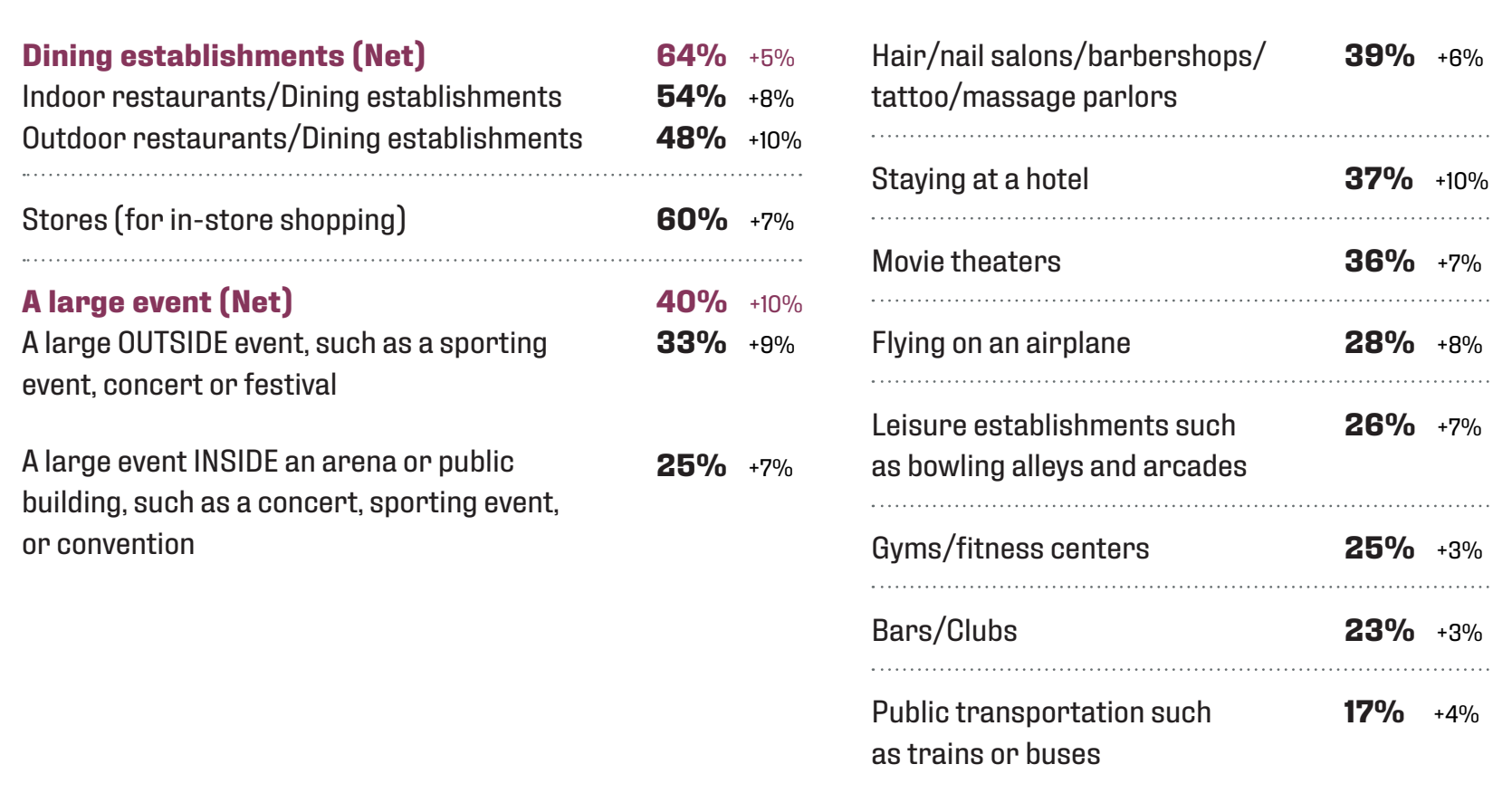
Key Strongly/Somewhat Agree Strongly Agree

While the general public largely agrees on these matters, there are noteworthy differences in agreement based on political party ID.



As the COVID pandemic continues to stabilize, which of these types of places/services do you anticipate going to or using in the next month or two?

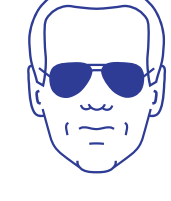
Consumers are planning on using/attending more services and events, as across the board venues should anticipate seeing increased levels of activity. Changes referenced are to data collected **one month ago** (March 26-28).



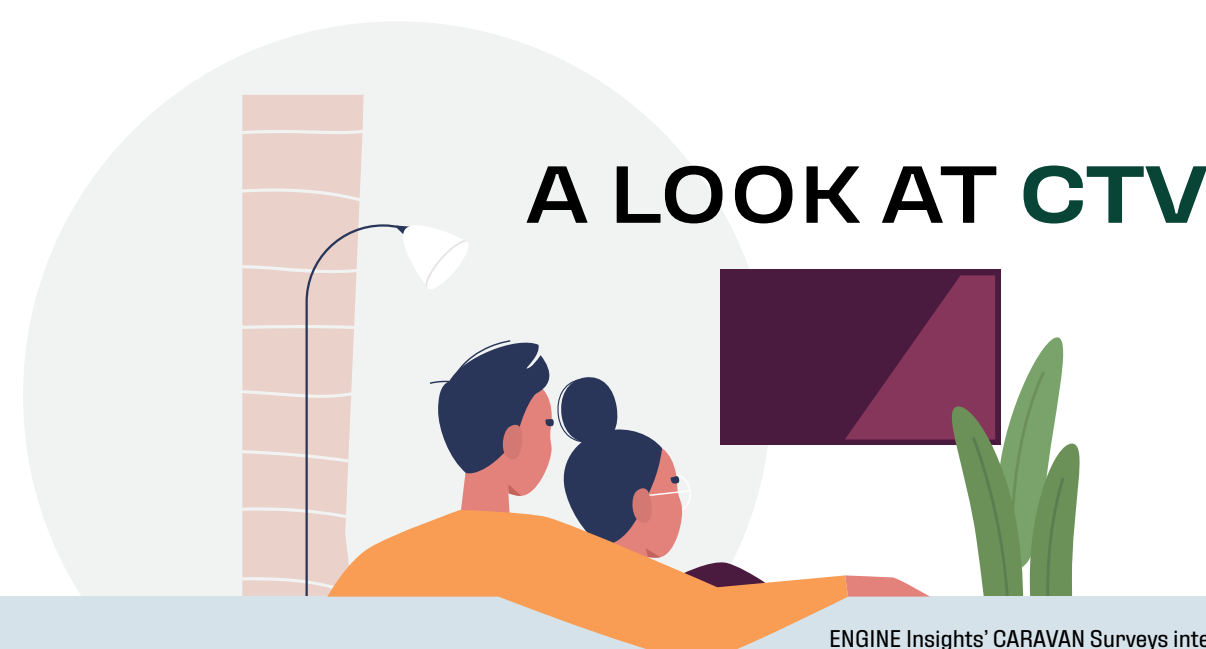
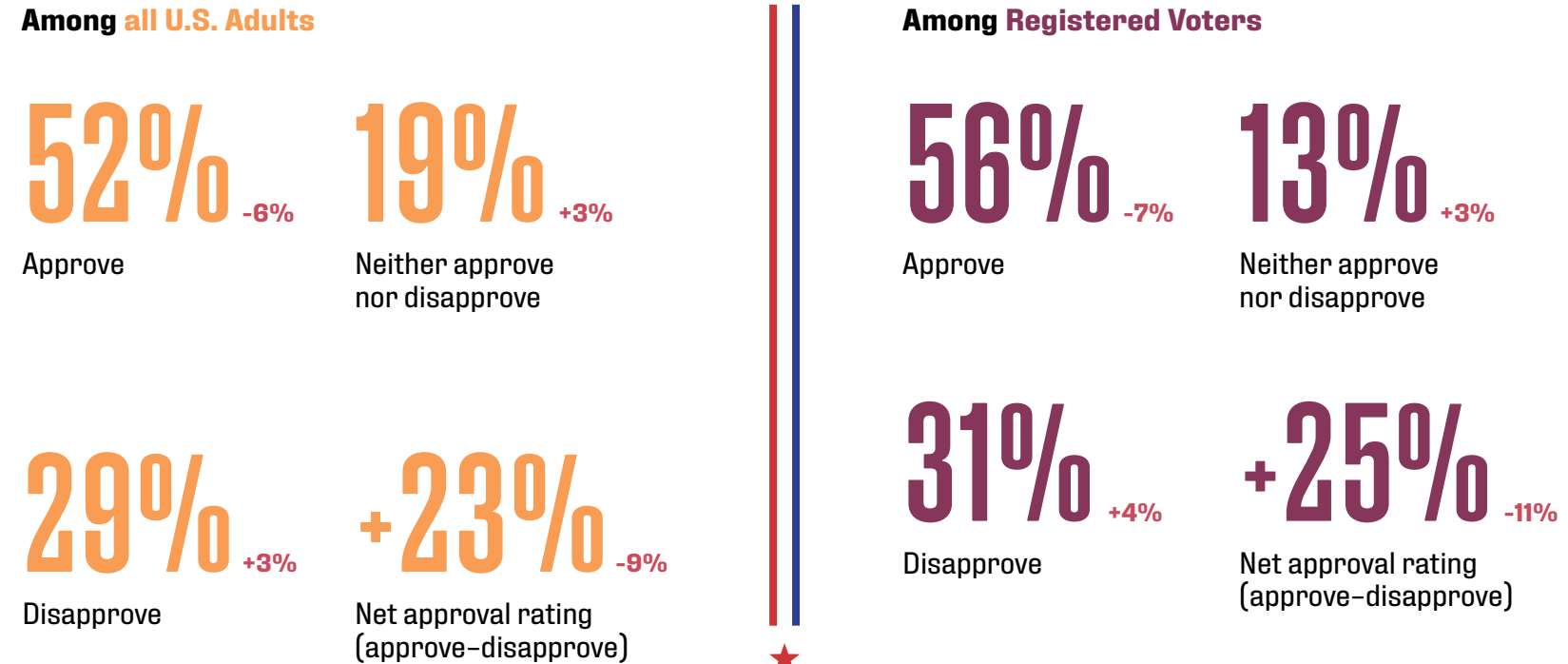
THE
PRESIDENCY

How much do you approve or disapprove of the job President Biden is doing?

+ = Change from one month ago, March 26-28



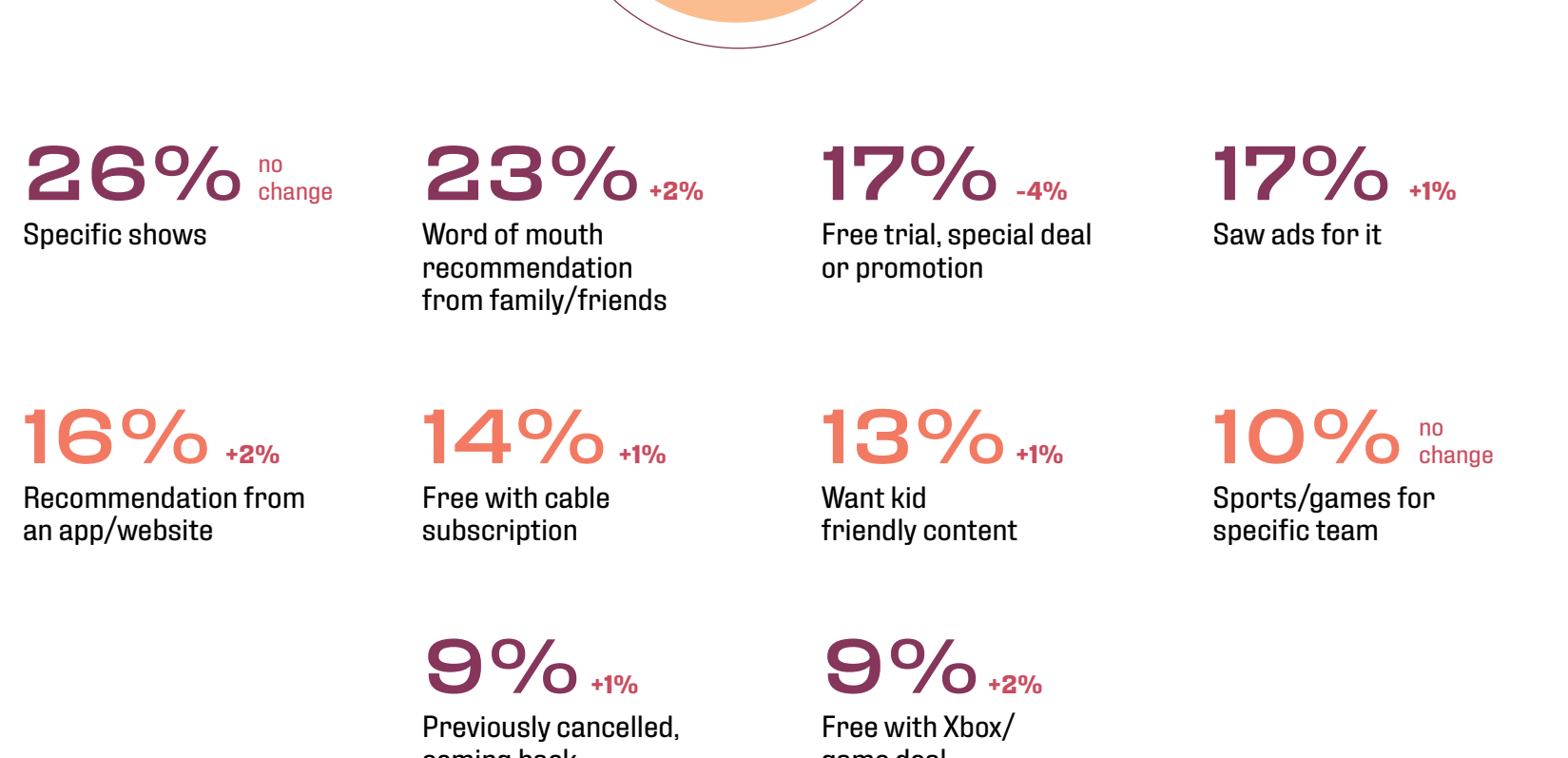
★★★★★★★★★★★★



ENGINE Insights' CARAVAN Surveys interviewed 1,004 people last week (April 21 - 23) and found: (*Differences are noted from 2 months prior, February 24th-26th*)

62% have joined a streaming video subscription in the past 3 months [No change], while 50% have cancelled at least one [+2%].

Why did you JOIN any TV subscription services in the past 3 months?



Why did you CANCEL any TV subscription services in the past 3 months?

