

Day-Brite

CFI

by @ignify

Industrial

Vaporlume sealed industrial &
FluxStream sealed strip



Cover your wet location needs with ease and confidence

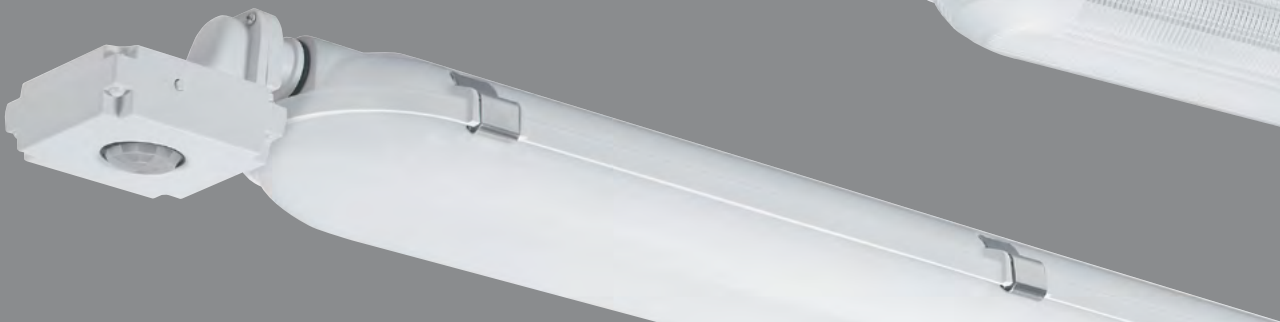
Day-Brite / CFI Vaporlume sealed industrial and FluxStream
sealed strip ensure just the right solution for your application.

Day-Brite / CFI offers a dual approach to wet location lighting with two robust and reliable families. For the highest output and most demanding applications, consider Vaporlume LED sealed industrial. If cost and ease of ordering are at the forefront of your job, FluxStream LED sealed strip might be the better choice. Either way, you get peace of mind and a great product. Each of these luminaires was designed around LEDs, resulting in high lumen output from small form factors. They also offer multiple lumen packages and distributions, assuring just the right output for your application requirements.



Vaporlume LED sealed industrial

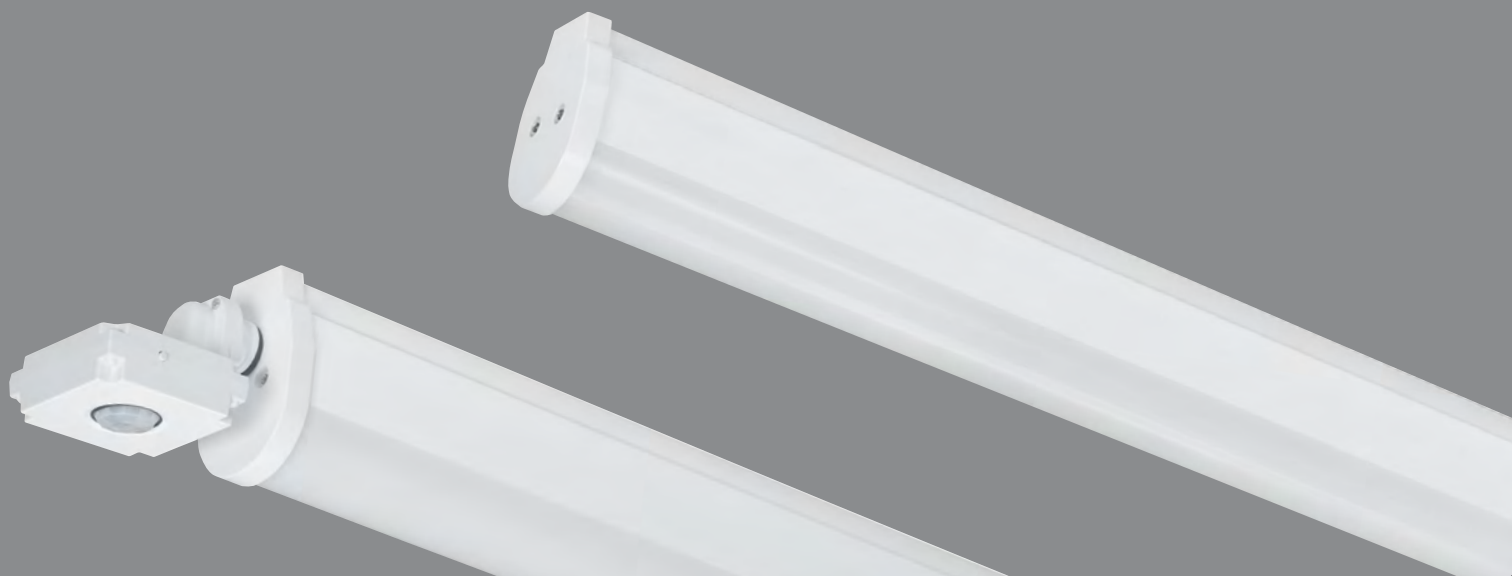
- Up to 10,000 lumens
- 2' and 4' lengths
- CCT 3000-5000K
- IP65 rating standard, IP67 optional
- NSF rated
- Frosted lens (LFA) available for reduced glare
- WHP optics with prismatic acrylic lens to meet DLC garage requirements
- Plastic cam latches standard, stainless steel optional
- Tamper resistant hardware optional
- Optional motion sensor for energy savings
- Continues Vaporlume LED legacy and offers higher output per foot at a lower price





FluxStream LED sealed strip

- Up to 12,000 lumens
- 4' and 8' lengths
- CCT 3000-5000K
- Wet location listing standard
- General wide distribution
- Optional motion sensor for energy savings
- Continues FluxStream family legacy of affordability and ease of ordering



Represented by



ERW Lighting & Controls
505 3rd Avenue West
Seattle, WA 98119
(206) 767-7722 Phone
(206) 762-4518 Fax
info@erwlighting.com



© 2019 Signify Holding. All rights reserved. The information provided herein is subject to change, without notice. Signify does not give any representation or warranty as to the accuracy or completeness of the information included herein and shall not be liable for any action in reliance thereon. The information presented in this document is not intended as any commercial offer and does not form part of any quotation or contract, unless otherwise agreed by Signify. All trademarks are owned by Signify Holding or their respective owners.

Signify North America Corporation
200 Franklin Square Drive,
Somerset, NJ 08873
Telephone 855-486-2216

Signify Canada Ltd.
281 Hillmount Road,
Markham, ON, Canada L6C 2S3
Telephone 800-668-9008