

**Systematic Review Data Repository (SRDR) Annual Report
December 2016 through November 2017**

Prepared for:

The Agency for Healthcare Research and Quality
Rockville, MD

Prepared by:

Brown Evidence-based Practice Center
Providence, RI

Authors:

Bryant T. Smith, MPH, CPH
Jens Jap, BS
Joseph Lau, MD
Ian J. Saldanha, MBBS, MPH, PhD

Summary

This report summarizes trends in traffic and usage of the Systematic Review Data Repository (SRDR) Web site (srd.ahrq.gov) between this year (December 1, 2016 to November 30, 2017) and last year (December 1, 2015 to November 30, 2016). Where relevant, data are summarized back to June 2012, when SRDR was released to the public.

This year, SRDR experienced a 27% increase in the average number of unique visitors per month to the site (3,599 unique visitors per month in 2016-17 from 2,832 unique visitors per month in 2015-16). At the same time, however, SRDR experienced a 41% decrease in the number of project contributor accounts certified (149 accounts certified in 2016-17 compared with 253 certified in 2015-16), and a 32% decrease in the number of SRDR projects initiated on the site (145 projects initiated in 2016-17 compared with 212 in 2015-16).

SRDR continues to actively broaden its user base internationally, receiving requests for public commentator and project contributor accounts from 181 different countries this year, up from 149 countries last year. The country with the most number of requests since site launch is the United States, followed by China and the United Kingdom.

This year, staff members from 12 of the 13 EPCs were trained and certified to contribute systematic review data to SRDR. EPCs contributed 74 of the 98 projects published in the SRDR Web site. More than half of the EPC projects published in SRDR (54%) used the SRDR extraction form to enter structured data, while approximately a third (31%) uploaded unstructured data using Microsoft Word documents, Microsoft Excel files, and PDF files. The remaining EPC projects (15%) published in SRDR entered data using a combination of structured and unstructured data. Finally, none of the EPCs used previously-deposited data in SRDR to update their EPC reports. However, one EPC and three non-EPC projects published in SRDR were updates of existing published projects in SRDR, with the three non-EPC projects created using data previously deposited in SRDR.

Table of contents

A. Introduction	2
B. Data source and data collection method	3
C. Results	4
D. Training sessions and training site	21
E. SRDR usage by Evidence Based Practice Centers	25
Appendix A	
Appendix A.1. Complete list of 577 unpublished projects (56,622 studies) currently in SRDR as of November 2017	29
Appendix A.2. Complete list of 98 published projects (12,337 studies) currently in SRDR as of November 2017.....	30

A. Introduction

Development of the Systematic Review Data Repository (SRDR) started in July 2010, and the system was released for use by EPCs and the public in June 2012. This resource serves as both an archive and a data extraction tool, is shared among organizations and individuals producing systematic reviews worldwide, and enables the creation of a central database of systematic review data. This database is collaboratively vetted, is freely accessible, and aims to integrate seamlessly with existing workflows. The ultimate goal of SRDR is to facilitate the efficient generation and updates of systematic reviews, thus improving policymaking with regards to health care. An introductory article describing the goals, rationale, challenges, and benefits of SRDR was published in 2012.¹ During the report period, three categories of user access to SRDR have been defined: non-registered public viewers, registered public commentators, and certified project contributors. A more detailed description of the system users and their levels of access are provided in Section D (pages 21-24).

This report describes the usage and growth of SRDR during the last 12 months (December 2016 through November 2017). When possible, we have provided data back to June 2012 when the site was first launched for public use.

¹ Ip S, Hadar N, Keefe S, et al. A Web-based archive of systematic review data. *Syst Rev* 2012;1(1):15.

B. Data source and data collection method

To enable the collection of information regarding the growth of the SRDR database on a monthly basis, the SRDR database administrators at the Brown EPC wrote custom MySQL queries that were executed on the SRDR production and training databases. We collected statistics regarding new user registrations, newly initiated projects, and the number of studies residing in the system. In addition to the in-house summary data production, we track individual site visit data by parsing log files obtained from the server on which the SRDR Web site is hosted.

SRDR usage data are collected by executing MySQL queries directly on the production server. This method allows us to account for two types of users: those certified as project contributors and those who have registered public commentator accounts; both types of users have the ability to download data from projects published to SRDR, as well as comment on published projects. However, users simply browsing published content (i.e., non-registered public viewers) do not require registration and therefore are not traceable by our querying method. To account for these users, we parsed Web server log files directly. These files contain data for all visitors to the site (by unique IP address, page requested, and response status), regardless of account type and were used to create Table 1 in Section C.

C. Results

During the year between December 2016 and November 2017, the SRDR Web site experienced an average of 3,599 unique visitors per month (range: 2,973 to 4,457 visitors). This represents a 27% increase in the average number of unique visitors per month to the Web site compared with the previous 12 months. There was an average of 118 unique visitors to the Web site per day this year. However, in comparison with the previous year, SRDR experienced a 41% decrease in the number of project contributor accounts certified (149 vs. 253 accounts) and a 32% decrease in the number of projects initiated (145 vs. 212 projects) this year. It is possible that the decrease in accounts certified and projects initiated this year compared to last year was a result of the SRDR Team's shift in focus this year from SRDR outreach and training (i.e., presenting workshops at conferences such as the Guidelines International 13th Annual Conference Session) to the development of SRDR PLUS (designing the Web site and conducting testing sessions).

SRDR continues to enjoy a broad international presence. This year, requests for either project contributor accounts or published commentator accounts originated from 181 different countries, a 23% increase from last year (149 countries). Among all countries, the United States had the largest share of cumulative requests (36,690). The countries with the second, third, and fourth largest share of cumulative requests were: China (7,749 requests), United Kingdom (2,953 requests), and Italy (2,662 requests).

As of this year, 779 public commentator accounts and 1,030 project contributor accounts have been created since the launch of the SRDR Web site. At the same time, a cumulative total of 577 projects have been initiated; 98 of these projects have been published in the SRDR Published Projects page (srdr.ahrq.gov/projects/published). These published projects are available for public review and download of systematic review data. Among these 98 published projects, 74 were contributed by EPCs. Also, among these 98 published projects, four projects were updates of existing projects in SRDR. Three of these projects, each contributed by the International Life Sciences Institute, used data previously deposited in SRDR. Specifically, “data was extracted prospectively in SRDR by the research team, exported in Microsoft Excel and cleaned, and the final (cleaned) dataset was retrospectively imported from Excel back to SRDR to create the current, published project”². The fourth project, “Early Diagnosis, Prevention, and Treatment of *C. difficile*: Update [Entered Retrospectively]”, published by the Minnesota EPC, is an update of an existing project in SRDR, “Effectiveness of Early Diagnosis, Prevention, and

² See Project Notes Section of SRDR Published Projects: “Diet-Related Fibers and Human Health Outcomes, Version 3.1 (retired)”, “Diet-Related Fibers and Human Health Outcomes, Version 3.0 (retired)”, “Diet-Related Fibers and Human Health Outcomes, Version 2 (retired)”

Treatment of Clostridium difficile Infection [Entered Retrospectively]” also published by the same EPC, but it did not use the data that was previously deposited in the original project.

Among the 74 projects that have been published by EPCs to date, over half (40 projects) used structured SRDR extraction forms to enter data into SRDR. Of these 40 projects, data were manually entered with an SRDR extraction form for 24 of them, imported into an SRDR extraction form for 14, and partly manually entered and partly imported into an extraction form for two. At the same time, a third of the published EPCs to date (23 projects), uploaded unstructured data (i.e., Microsoft Word documents, Microsoft Excel files, and PDF files) to SRDR. The remaining 11 published EPC projects chose to enter both structured and unstructured data using a combination of manually entering/importing data into an SRDR extraction form and uploading unstructured data.

Finally, this year, EPC staff members from 12 of the 13 EPCs were trained and certified to contribute systematic review data to SRDR. The only EPC that did not receive training year is the University of Connecticut EPC.

For detailed statistics, please refer to the following tables and figures.

- **Table 1.** General statistics by month from December 2016 through November 2017
- **Figure 1.** Average page hits per day for each month from December 2016 through November 2017
- **Figure 2.** Average number of page hits by hour of the day (UTC) recorded over the period of December 2016 through November 2017
- **Figure 3.** Geographic distribution of SRDR user accounts as of site launch in June 2012 through November 2017
- **Table 2.** Number of requests for SRDR user accounts by country of origin (including requests for public commentators and project contributor accounts) as of site launch in June 2012 through November 2017
- **Table 3.** The Top-10 Ranked Countries by number of requests for SRDR public commentator or project contributor accounts as of site launch in June 2012 through November 2017
- **Figure 4.** Cumulative number of requests for public commentator accounts by month from site launch in June 2012 through November 2017
- **Figure 5.** Cumulative number of requests for project contributor accounts by month from site launch in June 2012 through November 2017
- **Figure 6.** Cumulative number of certified project contributors by month from site launch in June 2012 through November 2017

SRDR Annual Report, December 2016 to November 2017

- **Figure 7.** Cumulative number of projects initiated in SRDR by month from site launch in June 2012 through November 2017
- **Figure 8.** Cumulative number of projects published in SRDR by month from site launch in June 2012 through November 2017
- **Table 4.** Characteristics of SRDR projects~ currently in SRDR as of November 2017
- **Table 5.** Characteristics of projects published~ in SRDR as of November 2017
- **Figure 9.** Cumulative number of requests for training accounts* by month from January 2013 through November 2017
- **Table 6.** List of Contact Persons for each EPC funded by AHRQ between December 2016 and December 2017
- **Figure 10.** Cumulative number of EPC projects published in SRDR by month from December 2013 through November 2017
- **Table 7.** Characteristics of EPC projects published~ in SRDR as of November 2017

C.1. Public viewers³

C.1.a General Statistic

Table 1. General statistics by month from December 2016 through November 2017

Category	Dec 2016	Jan 2017	Feb 2017	Mar 2017	Apr 2017	May 2017	Jun 2017	Jul 2017	Aug 2017	Sep 2017	Oct 2017	Nov 2017
Page hits												
Total hits	221683	314388	290377	458195	318254	288404	293451	285606	293552	258219	301709	286963
Average hits per day	7151	10141	10370	14780	10608	9303	9781	9213	9469	8607	9732	9565
Successful hits (as percent)*	72.2%	58.4%	44.1%	50.1%	67.8%	60.2%	63.1%	61.2%	62.9%	57.3%	61.0%	60.3%
Site visitors												
Unique visitors	3313	3306	2973	3639	3643	3591	3550	3428	3757	3767	4457	3761
Visitors who visited once	1382	1023	938	1230	1078	1147	1073	1025	1028	969	1303	1117
Visitors with >1 visit	1931	2283	2035	2409	2565	2444	2477	2403	2729	2798	3154	2644
Average number of visitors per day	106	106	106	117	121	115	118	110	121	125	143	125

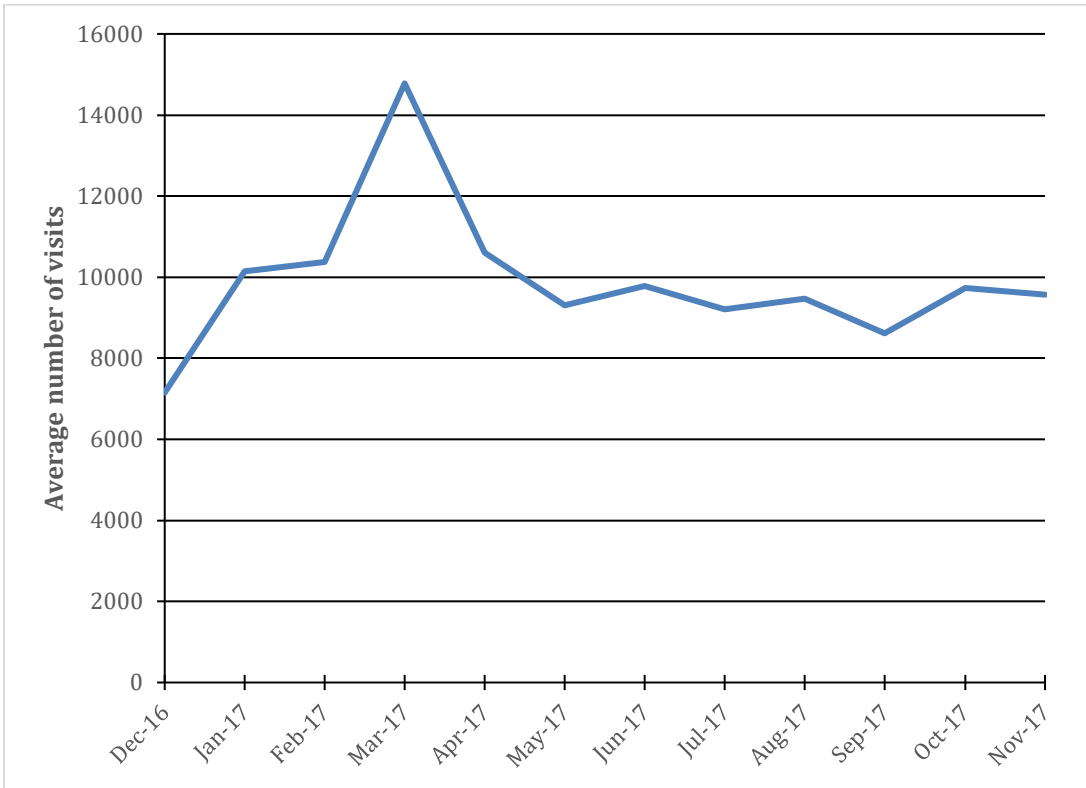
(Data Source: SRDR production log file)

* Page Hits: A "hit" is not a visit to the Web site, but a request for a page or resource on the site/web server. A resource on the Web server can be a graphic, java applet, the html file, etc. So, if a site has 79 small graphics on the page, every visitor to the site registers as 80 hits on the server (79 graphics plus the html file). In this case, 80,000 hits translate to 1,000 visitors.

³This user type can view and download published systematic reviews data. They are not able to comment, edit, or supplement any deposited data.

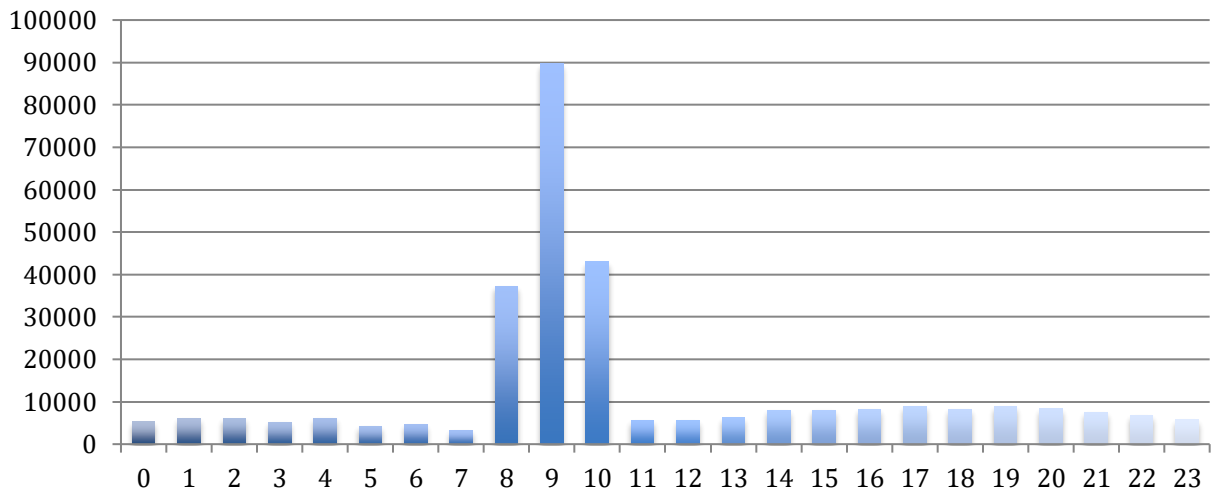
Registration with SRDR is voluntary.

Figure 1. Average page hits per day for each month from December 2016 through November 2017



(Data Source: SRDR production log file)

Figure 2. Average number of page hits by hour of the day (UTC) recorded over the period of December 2016 through November 2017



(Data Source: SRDR production log file; Note: The source of the spike in page hits observed during the hours of 8:00 to 10:00 UTC are daily security scans conducted by Aquilent, a 3rd party company which manages the security of SRDR on behalf of AHRQ.)

C.1.b Geographic Distribution of SRDR Users

Figure 3. Geographic distribution of SRDR user accounts as of site launch in June 2012 through November 2017

Note: Blue shading represents countries in which SRDR users were located when they registered for a public commentator or project contributor SRDR account

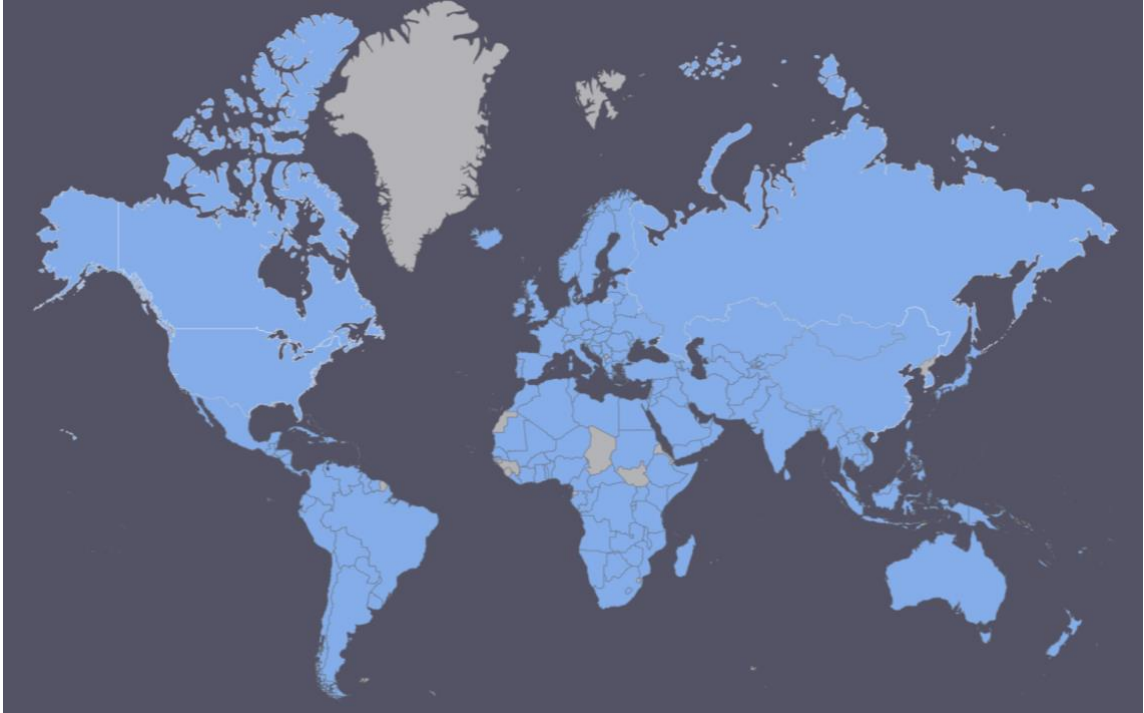


Table 2. Number of requests for SRDR user accounts by country of origin (including requests for public commentators and project contributor accounts) as of site launch in June 2012 through November 2017

Country	Number of Requests	Country	Number of Requests	Country	Number of Requests
Andorra	1	Ghana	40	Niger	2
United Arab Emirates	198	Gibraltar	3	Nigeria	68
Afghanistan	4	Guadeloupe	3	Nicaragua	4
Antigua and Barbuda	7	Greece	546	Netherlands	1,121
Albania	72	Guatemala	6	Norway	172
Armenia	40	Guam	4	Nepal	52
Angola	10	Guyana	5	New Zealand	156
Asia/Pacific Region	12	Hong Kong	306	Oman	38
Argentina	254	Honduras	3	Panama	17
Austria	170	Croatia	129	Peru	126
Australia	1,172	Haiti	9	French Polynesia	3
Azerbaijan	38	Hungary	165	Papua New Guinea	1
Bosnia and Herzegovina	89	Indonesia	521	Philippines	750
Bangladesh	143	Ireland	270	Pakistan	550
Belgium	255	Israel	428	Poland	721
Burkina Faso	2	Isle of Man	2	Puerto Rico	31
Bulgaria	89	India	2,492	Palestine, State of	24
Bahrain	20	Iraq	91	Portugal	273
Burundi	2	Iran, Islamic Republic of	252	Palau	1
Benin	5	Iceland	22	Paraguay	7

SRDR Annual Report, December 2016 to November 2017

Country	Number of Requests	Country	Number of Requests	Country	Number of Requests
Bermuda	1	Italy	2,662	Qatar	73
Brunei Darussalam	18	Jersey	1	Reunion	12
Bolivia	13	Jamaica	38	Romania	667
Bonaire	2	Jordan	52	Serbia	318
Brazil	1,907	Japan	817	Russian Federation	2,563
Bahamas	5	Kenya	74	Rwanda	4
Bhutan	3	Kyrgyzstan	12	Saudi Arabia	492
Botswana	10	Cambodia	14	Seychelles	18
Belarus	84	Comoros	2	Sudan	14
Belize	5	Saint Kitts and Nevis	2	Sweden	493
Canada	2,585	Korea, Republic of	712	Singapore	246
Democratic Republic of the Congo	3	Kuwait	35	Slovenia	68
Central African Republic	1	Cayman Islands	3	Slovakia	152
Congo	1	Kazakhstan	54	Senegal	34
Switzerland	320	Lao People's Democratic Republic	6	Somalia	2
Cote d'Ivoire	23	Lebanon	151	Suriname	9
Chile	251	Sri Lanka	109	El Salvador	3
Cameroon	11	Liberia	7	Saint Maarten	1
China	7,749	Lesotho	4	Syrian Arab Republic	29
Colombia	173	Lithuania	82	Togo	2
Costa Rica	16	Luxembourg	51	Thailand	416

SRDR Annual Report, December 2016 to November 2017

Country	Number of Requests	Country	Number of Requests	Country	Number of Requests
Cuba	1	Latvia	91	Tajikistan	31
Cape Verde	14	Libya	7	Turkmenistan	2
Curacao	3	Morocco	154	Tunisia	94
Cyprus	15	Moldova, Republic of	58	Turkey	603
Czech Republic	339	Montenegro	19	Trinidad and Tobago	28
Germany	2,202	Madagascar	4	Taiwan, Province of China	467
Denmark	218	Macedonia	72	Tanzania, United Republic of	33
Dominican Republic	55	Mali	1	Ukraine	1,235
Algeria	215	Myanmar	9	Uganda	49
Ecuador	57	Mongolia	16	United States	36,690
Estonia	82	Macao	6	Uruguay	28
Egypt	1,047	Northern Mariana Islands	1	Uzbekistan	2
Spain	662	Martinique	2	Venezuela	136
Ethiopia	61	Mauritania	3	Virgin Islands	16
European Union	76	Malta	22	Viet Nam	297
Finland	94	Mauritius	32	Vanuatu	1
Fiji	9	Maldives	13	Yemen	10
Federated States of Micronesia	1	Malawi	11	Mayotte	2
France	2,435	Mexico	438	South Africa	313
Gabon	5	Malaysia	571	Zambia	13
United Kingdom	2,953	Mozambique	12	Zimbabwe	9

Country	Number of Requests	Country	Number of Requests	Country	Number of Requests
Grenada	3	Namibia	9		
Georgia	77	New Caledonia	2		

(Data Source: SRDR site via MySQL queries; Note: In order to identify country of origin of requests for public commentator or project contributor accounts, the MySQL query identified unique instances of IPs in the SRDR database from which requests for either a public commentator or project contributor account was made since site launch in June 2012 through November 2016. As a result, the number of requests shown in this table only reflects the count of IPs identified by the query, and not the count individual email addresses tied to each request, as reflected in Figures 4, 5 and 6 in this document)

Table 3. The Top-10 Ranked Countries by number of requests for SRDR public commentator or project contributor accounts as of site launch in June 2012 through November 2017

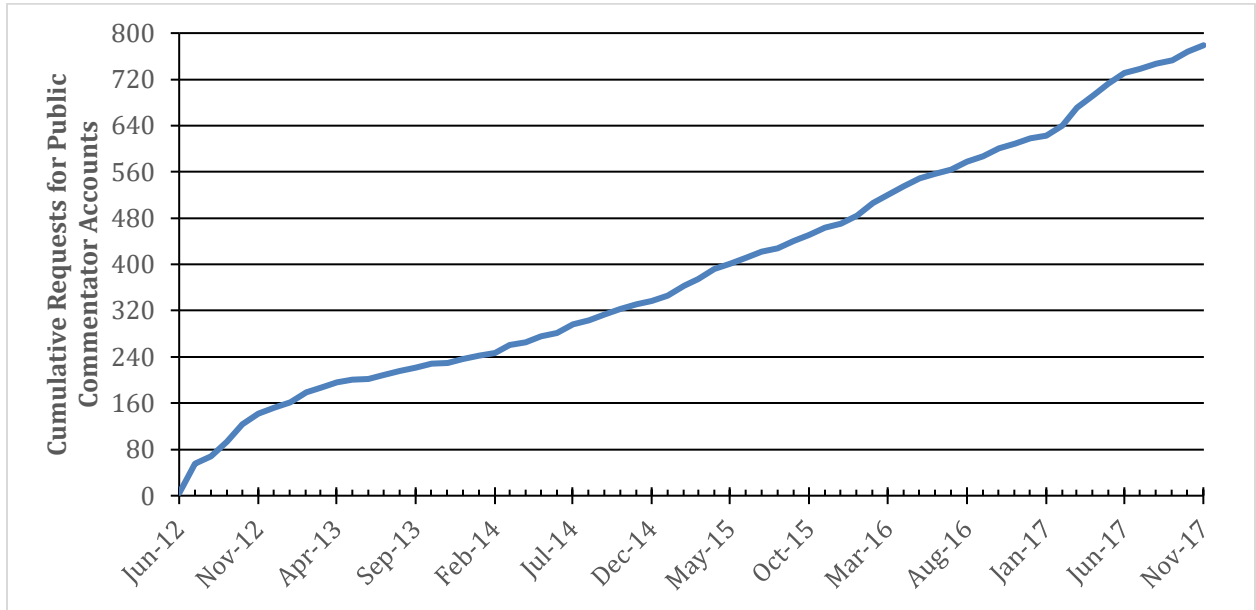
Ranking	Country	Number of Requests
1	United States	36,690
2	China	7,749
3	United Kingdom	2,953
4	Italy	2,662
5	Canada	2,585
6	Russian Federation	2,563
7	Brazil	1,907
8	Ukraine	1,235
9	Australia	1,172
10	Netherlands	1,121

(Data Source: SRDR site via MySQL queries)

C.2. Registered Public Commentators⁴

C.2.a Registered public commentator accounts growth

Figure 4. Cumulative number of requests for public commentator accounts by month from site launch in June 2012 through November 2017



(Total number of users = 779; Data Source: SRDR site via MySQL queries)

C.2.b Comments on Published Systematic Review project's data

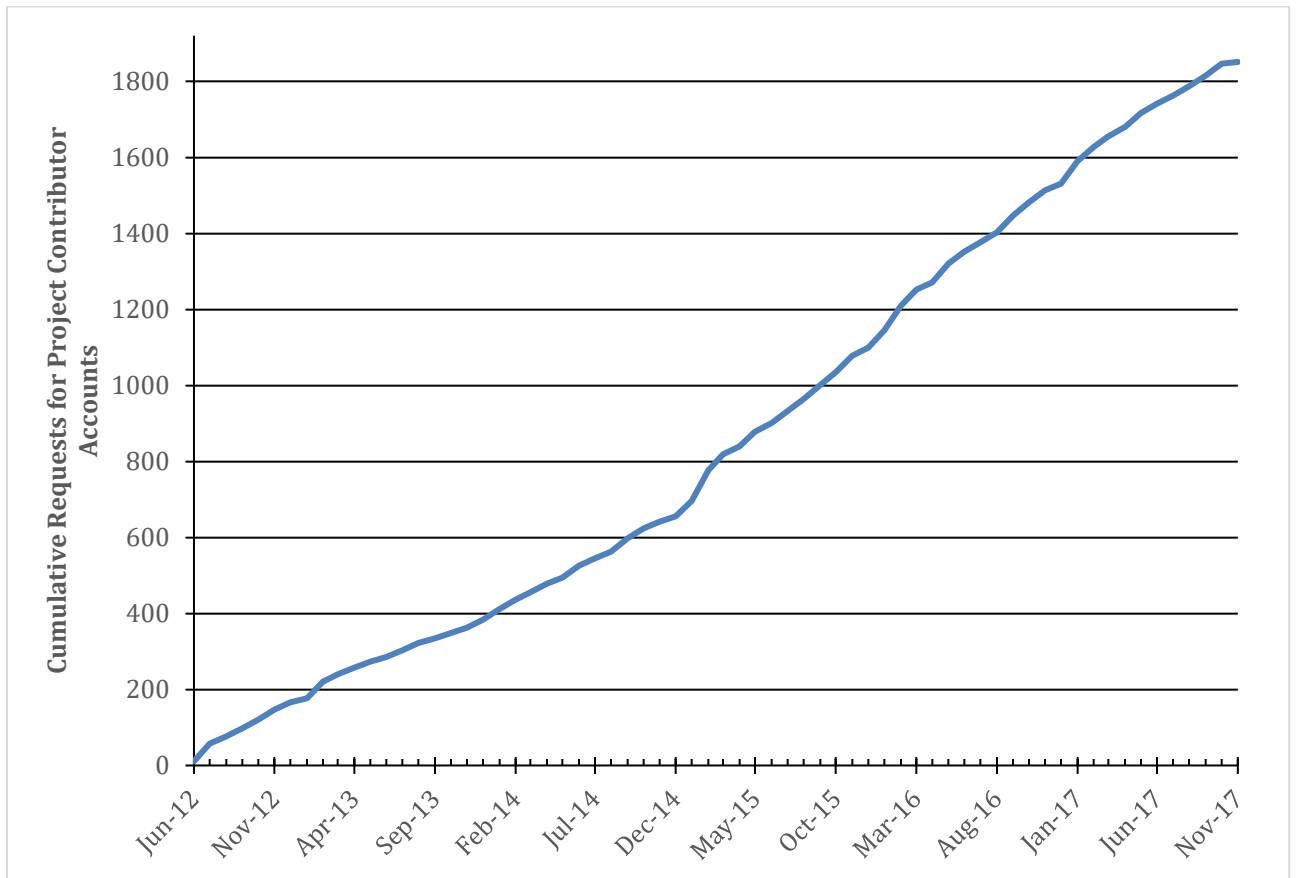
No comments were posted by any of the registered public commentators.

⁴ An SRDR user with permission to post comments on published deposited systematic reviews data entries. Such users would have to register on the SRDR Web site, providing basic identifying and contact information, including their name, affiliated organization, and a valid email address. Following email verification, newly registered commentators are asked to accept the terms of use for the repository's discussion features. All comments are vetted for clarity and adherence to rules by the SRDR operational team prior to posting.

C.3. Registered Project Contributors⁵

C.3.a Registered project contributor accounts growth

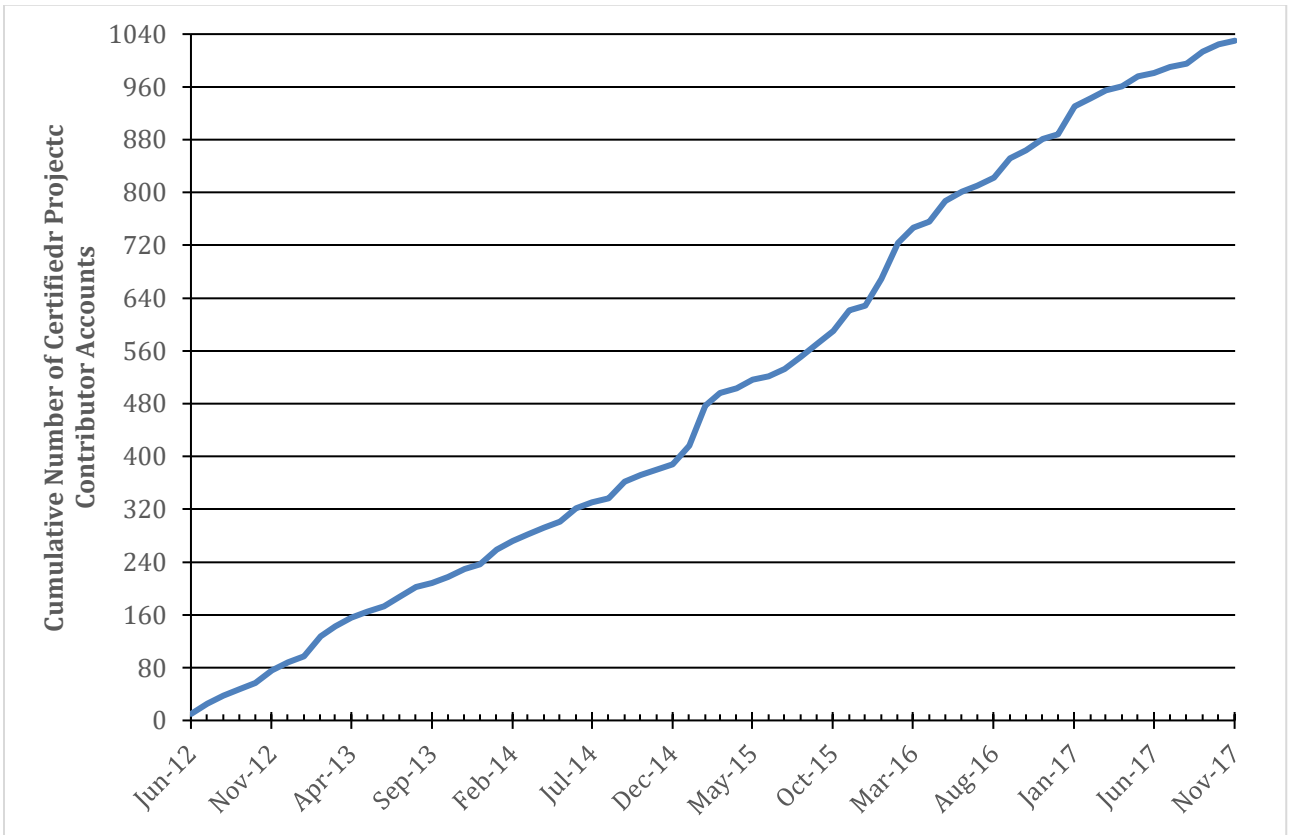
Figure 5. Cumulative number of requests for project contributor accounts by month from site launch in June 2012 through November 2017



(Total number of users = 1851; Data Source: SRDR site via MySQL queries)

⁵ A registered project contributor is an individual who has been given permission to contribute data to a project in SRDR. Accounts of this type would initially be assigned via certified groups or organizations rather than through SRDR's Web registration. EPCs and other groups would be granted rights to contribute data to the SRDR. Individual contributors who wish to submit evidence reviews not conducted under the auspices of an SRDR-recognized or -affiliated sponsoring organization would be granted access separately under policies to be established with guidance from the SRDR governing board.

Figure 6. Cumulative number of certified project contributors by month from site launch in June 2012 through November 2017

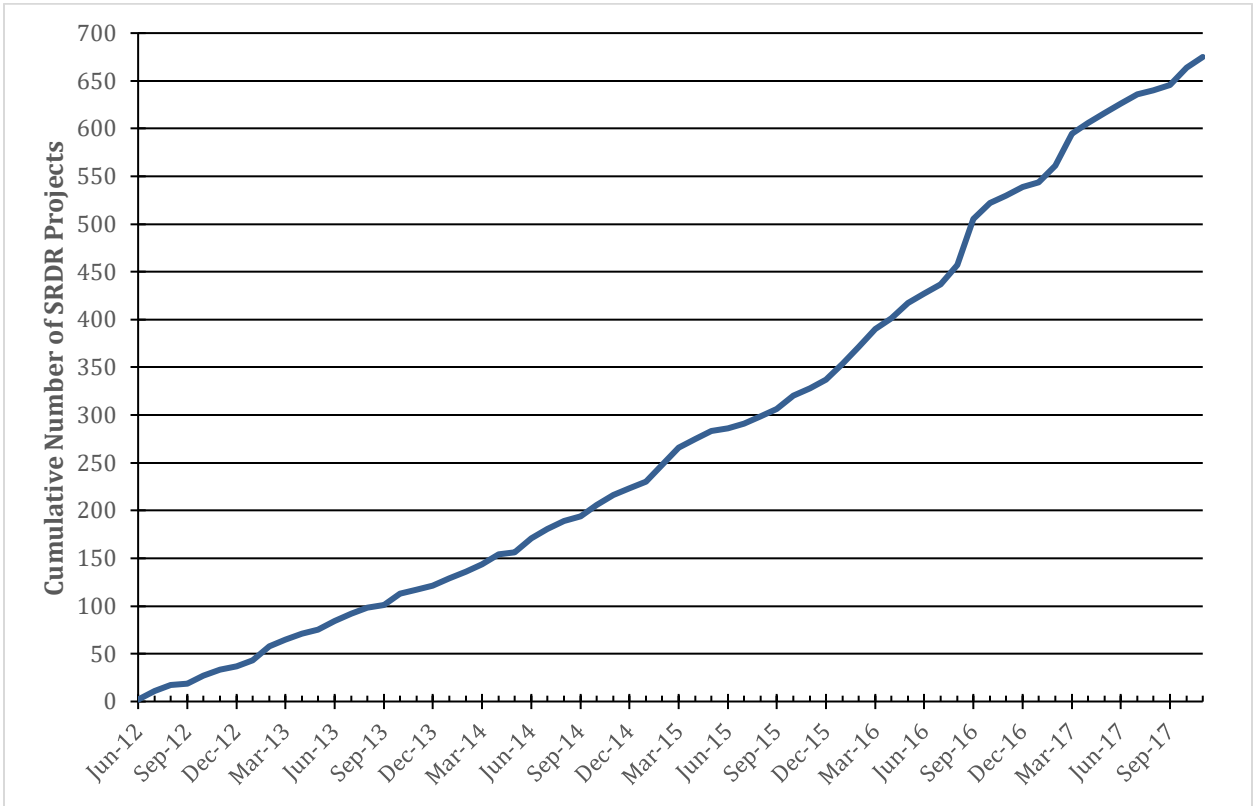


(Total number of certified users = 1030; Data Source: SRDR site via MySQL queries)

C.4. Projects in SRDR

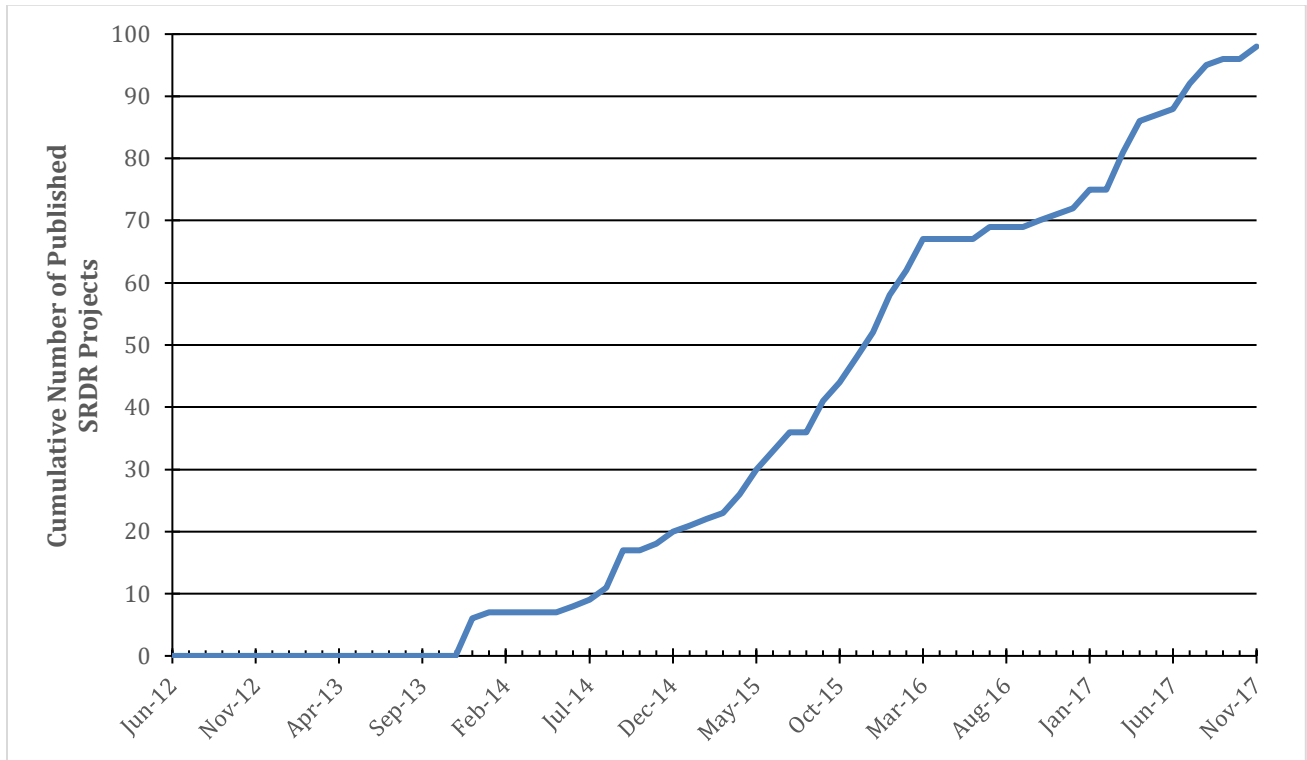
C.4.a SRDR projects growth and characteristics

Figure 7. Cumulative number of projects initiated in SRDR by month from site launch in June 2012 through November 2017



(Total number of projects = 675; Data Source: SRDR site via MySQL queries; Note: Does not include projects initiated by SRDR staff for testing or demonstration purposes)

Figure 8. Cumulative number of projects published in SRDR by month from site launch in June 2012 through November 2017



(Total number of published projects = 98; Data Source: SRDR site via MySQL queries)

Table 4. Characteristics of SRDR projects~ currently in SRDR as of November 2017

Category	N (%)	Range	Additional Information
Total number of projects	577 (100%)	-	10 projects in average were initiated per month since June 24 th 2012
Total number of studies for all projects	56,622	0-19,815	<ul style="list-style-type: none"> • Average of 98 studies per project when number of projects = 577[^] • Average of 43 studies per project when number of projects = 567[~]
Projects with number of studies = 0*	131 (23%)	-	-
Projects with number of studies = 1*	63 (11%)	-	-
Projects with number of studies >1	383 (66%)	2-19815	-
Projects with number of studies ≥ 10	246 (43%)	10-19815	-
Projects with number of studies ≥ 30	170 (29%)	31-19815	-
Projects with number of studies ≥ 100	74 (13%)	102-19815	-
Projects with number of studies ≥ 500	19 (%)	515-19815	-
Number of extraction form template(s)	689	0-10	Average of two extraction form templates per project
Number of key questions	1054	1-13	Average of two Key questions per project
Number of collaborators	1791	1-31	Avg. of three collaborators per project

(Data Source: SRDR site via MySQL queries)

~ Does not include projects that have been published or were created by SRDR staff for testing and demonstration purposes.

*Projects in SRDR with zero or one study data extractions can indicate one of the following: 1) project is very new and actual data extraction was not started yet; 2) users are just 'trying out' the system without an actual project.

^All 577 ongoing projects

~ Only 567 projects were included; the Medical Interventions for Primary Open Angle Glaucoma Network Meta-Analysis project with 990 studies, the Perioperative Pregabalin Use Systematic Review and Meta-Analysis with 1501 studies, the Predictive models for Common Cancers project with 930 studies, the Fiber Evidence Map with 1054 studies, the InHYPO-DM Systematic Review with 2917 studies, the Alpha Blockade v. Calcium Channel Blockade for Pheochromocytoma Surgery abstract screening project with 1160 studies, the Alpha Blockade v. Calcium Channel Blockade for Pheochromocytoma Surgery full text review project with 1656 studies, and the E-Trials Registry project with 19815 studies were excluded.

See **Appendix A.1** for the complete list of projects (567) initiated in SRDR as of November 2017. Table 4 data were generated based on this list.

Table 5. Characteristics of projects published~ in SRDR as of November 2017

Category	N (%)	Range	Additional Information
Total number of projects	98 (100%)	-	1 project in average was published per month since the first project was published on December 30 th 2013
Total number of projects that only entered data (i.e., structured data) using SRDR Extraction form ^a	57 (58%)	-	-
- Data manually entered into form	33		
- Data imported into form	19		
- Data partly manually entered and partly imported into form	5		
Total number of projects that only entered unstructured data (e.g. Word Doc, Excel, and PDF files)	29 (30%)	-	-
Total number of projects that entered both structured and unstructured data ^b	12 (12%)		
- Manual entry and upload	1		
- Import and upload	11		
Total number of projects that are updates of existing projects in SRDR*	4 (4%)		
- Projects that used data previously deposited in SRDR	3 (3%)		
Total number of studies for all projects	12,337	1-991	Average of 126 studies per project
Projects with number of studies >1	96 (98%)	2-991	-
Projects with number of studies ≥ 10	89 (91%)	12-919	-
Projects with number of studies ≥ 30	74 (76%)	40-919	-
Projects with number of studies ≥ 100	40 (41%)	104-919	
Projects with number of studies ≥ 500	4 (4%)	868-919	
Number of extraction form template(s)	200	1-10	Average of two extraction form templates per project
Number of key questions	364	1-15	Average of four key questions per project
Number of collaborators	249	1-13	Avg. of two collaborators per project

(Data Source: SRDR site via MySQL queries)

~ Includes projects that have been published in the SRDR Web site and are available for viewing by the public.

^aNote: This includes the number of published projects that used either the methods of manual entry, importing or both to enter data into an SRDR extraction form (i.e., structured data)

^bNote: This includes the number of published projects that combined the methods of manual entry and upload OR import and upload.

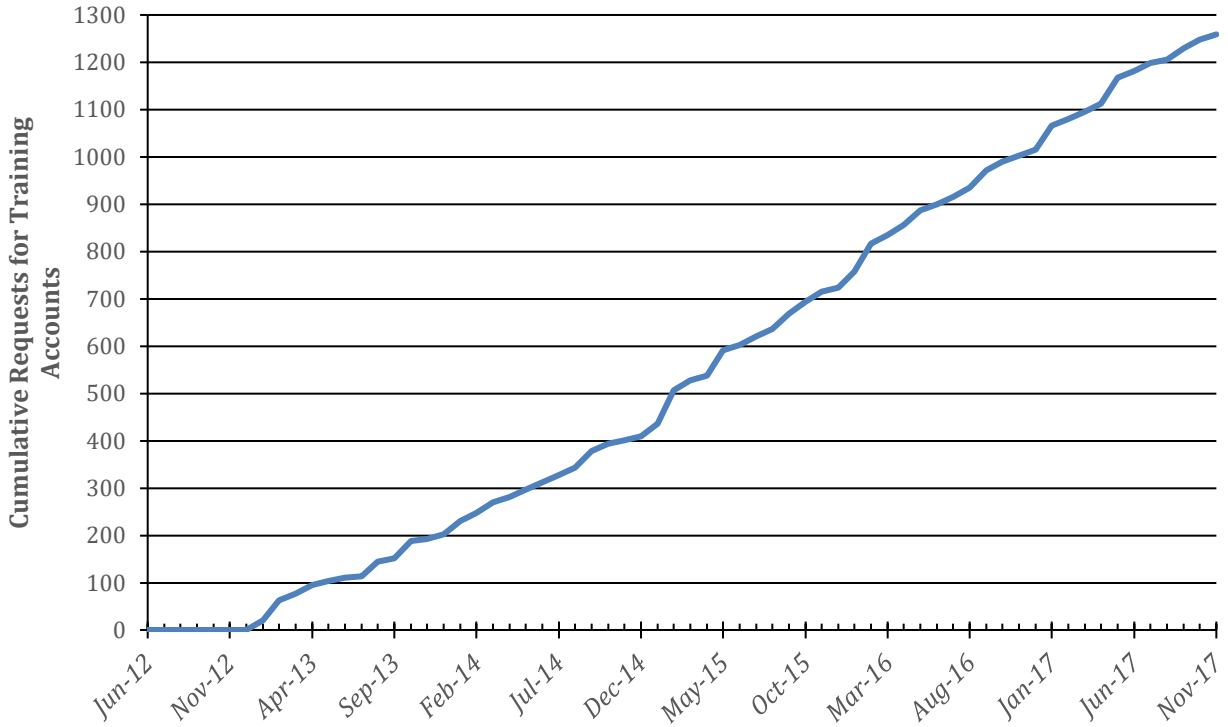
*Includes four published projects. One contributed by the Minnesota EPC and another project, "Diet-Related Fibers and Human Health Outcomes, Version 3.1" published to SRDR by the International Life Sciences Institute (ILSI) in January 2016, which is one in a series of updated projects, "Diet-Related Fibers and Human Health Outcomes, Version 3.0 (retired version)" and "Diet-Related Fibers and Human Health Outcomes, Version two (retired version)" which were also published to SRDR by ILSI in December 2016, and January 2016, respectively.

See **Appendix A.2** for the complete list of projects (98) published to SRDR as of November 2017. Table 5 data were generated based on this list.

D. Training sessions and training site

D.1. Training site usage

Figure 9. Cumulative number of requests for training accounts* by month from January 2013 through November 2017



(Total number of users = 1259; Data Source: SRDR site via MySQL queries)

** Note: It is assumed that users who submitted training requests followed through with completing either the Full Training or Data Extraction tutorials necessary to become a certified project contributor.*

D.2. Remote Training/Certification of Project Contributors

The SRDR Administrator remotely trained and certified prospective SRDR users for project contributor accounts, either by email or through use of live video webinar. The SRDR Administrator only conducted live training sessions with the Brown EPC. The following is a breakdown, by month, of the organizations whose members submitted requests for project contributor accounts and were certified as project contributors between December 2016 and November 2017.

December 2016

- Tufts Medical Center
- The Hospital for Sick Children
- Johns Hopkins University Bloomberg School of Public Health
- Nationwide Children’s Hospital

January 2017

- Brown University Center for Evidence Synthesis in Health
- Hackensack Meridian Health
- Children’s Hospital of Richmond at VCU
- The World Health Organization
- University of Rochester
- University of Toronto, Canada
- University of Oxford, UK
- University of Minnesota
- University of South China, China
- Rutgers University students taking systematic review course led by Scott Parrott, PhD
- Cambridge Health Alliance
- National Cancer Institute

February 2017

- Eindhoven University of Technology, Netherlands
- Children’s Hospital Brussels
- Johns Hopkins University Bloomberg School of Public Health taking systematic review course led by Tianjing Lee, PhD
- Duke University EPC

March 2017

- University of Pennsylvania
- MEEI / Harvard University
- Walden University
- Massachusetts Eye and Ear
- Damietta Faculty of Medicine, Al-Azhar University
- Cochrane Eye and Vision Group, North America

April 2017

- Northwestern University
- Dalhousie University, Nova Scotia
- Brown University Center for Evidence Synthesis in Health

SRDR Annual Report, December 2016 to November 2017

May 2017

- Syreon Research Institute, Hungary
- Shirley Ryan Ability Lab
- University of Miami
- Laboratory of Hygiene and Epidemiology, University of Ioannina School of Medicine
- Mayo Clinic EPC

June 2017

- Northwestern University
- Duke University School of Medicine

July 2017

- University of Massachusetts Medical School
- Johns Hopkins Bloomberg School of Public Health
- Galenic Research Institute
- Cochrane Institute

August 2017

- Brown University EPC
- InferLink Corp
- Rhode Island Hospital

September 2017

- Rutgers University students taking systematic review course led by Scott Parrott, PhD
- Stat-Aid Consulting
- Beth Israel Deaconess Medical Center
- Johns Hopkins University Bloomberg School of Public

October 2017

- Marquette University
- Veterans Affairs Evidence-based Synthesis Program
- ECRI Institute

November 2017

- Abbott Laboratories
- Columbia University/New York State Psychiatric Institute
- Marquette University

D.3. Webinar-based Quarterly Training Sessions

Webinar-based Quarterly Training Sessions hosted by the EPC Learning Network and presented by SRDR Administrators between December 2016 and November 2017.

December 2016

- Webinar Topic: *"Using evidence maps in SRDR to efficiently plan systematic reviews"*
- Presenter: Bryant Smith

October 2017

- Webinar Topic: *"Best Practices for Publishing Systematic Reviews to SRDR Using the Uploading Method of Data Entry"*
- Presenter: Bryant Smith

D.4. Conference Sessions / Workshops presented by SRDR staff

December 2016

- Johns Hopkins University Data Abstraction Assistant (DAA) Team: *"Developing the next Version of SRDR (aka, SRDR PLUS)"*
- Presenter: Bryant Smith

February 2017

- Agency for Healthcare Research and Quality: *"Developing the next Version of SRDR (aka, SRDR PLUS)"*
- Presenter: Bryant Smith

April 2017

- 2017 Society of General Internal Medicine Annual Meeting: *"Using Evidence Maps in SRDR to Efficiently Plan Systematic Reviews"*
- Presenter: Bryant Smith, Ethan Balk

E. SRDR usage by EPCs

In 2016-17, we prioritized providing training and technical support to current EPCs, then to major organizations that conduct Systematic Reviews (e.g., Cochrane and researchers based in academic institutions), before responding to other requests. Since the launch of SRDR in June 2012 and including the last 12 months of the current contract period, we have provided training to 11 of the 13 EPCs that were funded by AHRQ between December 2016 and December 2017. Table 6 summarizes the contact person for each EPC and Table 7 summarizes the characteristics of EPC projects published to SRDR.

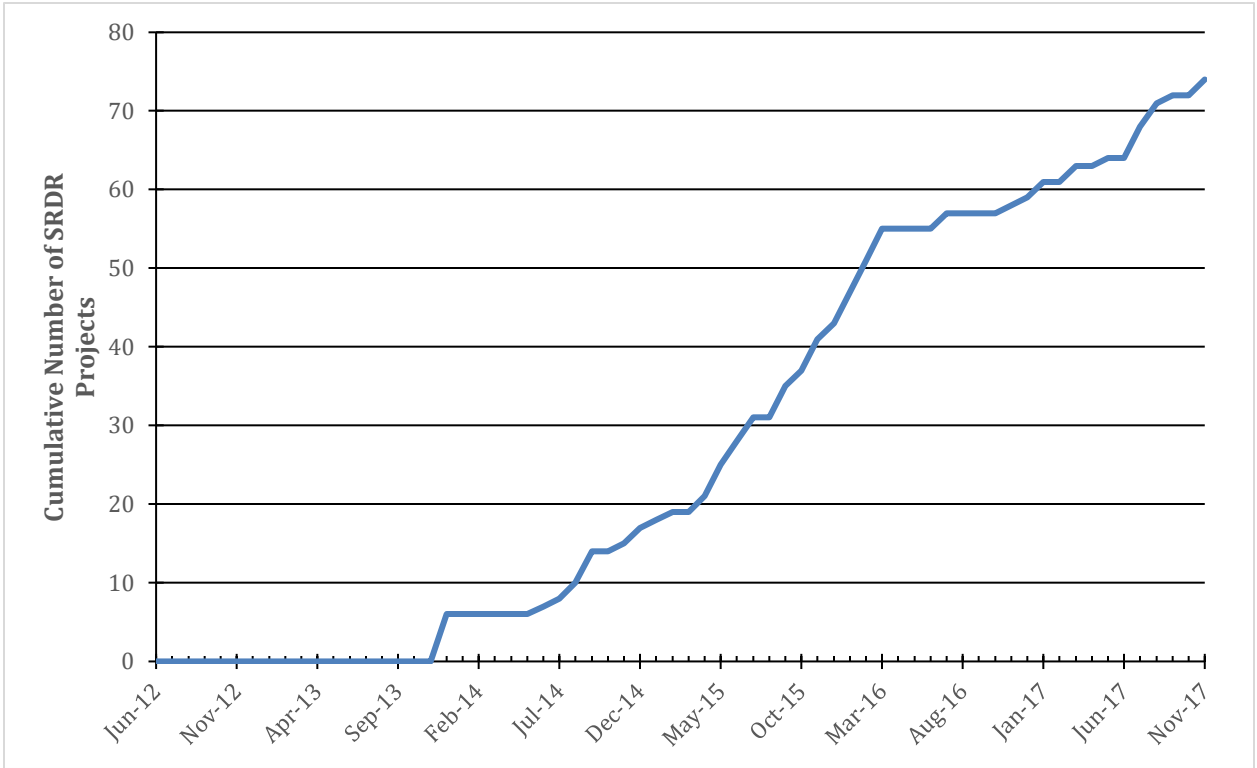
Table 6. List of Contact Persons for each EPC funded by AHRQ between December 2016 and December 2017

EPC	Contact Person
Brown University	Thomas Trikalinos
Duke University	Gillian Schmidler
ECRI Institute-Penn Medicine	Karen Schoelles/Craig Umscheid
Johns Hopkins University	Karen Robinson / Eric B. Bass
Kaiser Permanents Research Affiliates	Jennifer Lin
Mayo Clinic	M. Hassan Murad
Minnesota EPC	Mary Butler
Pacific Northwest EPC- Oregon Health & Science University	Elaine Graham
RTI-UNC EPC	Nancy Berkman
Southern California EPC-RAND	Aneesha Motala
University of Alberta	Jennifer Pillay
University of Connecticut ^a	Charles White / Craig Coleman
Vanderbilt University	Nila Sathe

^aNote: The only EPC in this list that has not yet requested SRDR Training or had any EPC staff members certified as SRDR project contributors, is the University of Connecticut EPC.

E.1 EPC published projects growth and characteristics

Figure 10. Cumulative number of EPC projects published in SRDR by month from December 2013 through November 2017



(Total number of published projects = 74; Data Source: SRDR site via MySQL queries)

Table 7. Characteristics of EPC projects published~ in SRDR as of November 2017

Category	N (%)	Range	Additional Information
Total number of projects	74 (100%)	-	1 project in average was published per month since the first project was published on December 30 th 2013
Total number of projects that only entered data (i.e., structured data) using SRDR Extraction form ^a	40 (54%)	-	-
- Data manually entered into form	24		
- Data imported into form	14		
- Data partly manually entered and partly imported into form	2		
Total number of projects that only entered unstructured data (e.g. Word Doc, Excel, and PDF files)	23 (31%)	-	-
Total number of projects that entered both structured and unstructured data ^b	11 (15%)	-	-
- Manual entry and upload	1		
- Import and upload	10		
Total number of EPC projects that are updates of existing projects in SRDR*	1 (1%)		
- Projects that used data previously deposited in SRDR	0 (0%)		
Total number of studies for all projects	7,090	2-281	Average of 96 studies per project
Projects with number of studies >1	74 (100%)	2-281	-
Projects with number of studies ≥ 10	70 (95%)	12-281	-
Projects with number of studies ≥ 30	58 (78%)	40-281	-
Projects with number of studies ≥ 100	31 (42%)	107-281	-
Projects with number of studies ≥ 500	0 (0%)	-	-
Number of extraction form template(s)	169	1-10	Average of two extraction form templates per project
Number of key questions	330	1-15	Average of five key questions per project
Number of collaborators	172	1-10	Avg. of two collaborators per project

(Data Source: SRDR site via MySQL queries)

~ Includes projects that have been published in the SRDR Web site and are available for viewing by the public.

^aNote: This includes the number of published EPC projects that used either the methods of manual entry, importing or both to enter data into an SRDR extraction form (i.e., structured data)

^bNote: This includes the number of published EPC projects that combined the methods of manual entry and upload OR import and upload

*Includes the SRDR project, "Early Diagnosis, Prevention, and Treatment of *C. difficile*: Update [Entered Retrospectively]" published to SRDR by the Minnesota EPC in November 2015, which was NOT created using data previously deposited in the project, "Effectiveness of Early Diagnosis, Prevention, and Treatment of *Clostridium difficile* Infection [Entered Retrospectively]" published by the Minnesota EPC in December 2014 and is based on a 2011 systematic review of the same title.

Appendix A

Appendix A.1. Complete list of 577 unpublished projects (56,622 studies) currently in SRDR as of November 2017

Please Note: This table is available upon request. Included in this table, however, are notable outlier projects that were either created as a way to test the system or were created for purposes other than data extraction, such as data screening or using SRDR as a registry of sorts.

Appendix A.2. Complete list of 98 published projects (12,337 studies) currently in SRDR as of November 2017

Please Note: The number of collaborators recorded in SRDR for each published project may not accurately reflect the number of contributors who authored the report. This is because the number of collaborators in a given project, as recorded in SRDR, equals the number of SRDR user accounts that retain access to edit the project on the SRDR Web site.

Also Note: The following definitions of Data Entry in SRDR - Manual entry (typing or copying and pasting data values, individually, into data fields on SRDR extraction forms); Importing (requires, first, formatting and saving the data as a Microsoft Excel spreadsheet. Data from the spreadsheet is then read and transferred, in batch, by the SRDR Data Import tool into data fields on SRDR extraction forms); and Uploading (Requires using the SRDR Report Manager tool to “attach” PDF, text, MS Word, or MS Excel files containing study data)

Project Title	Created Date	Published Date	Name of Organization	No. of Collaborators	No. of Extraction Forms	No. of Key Questions	No. of Studies	Method of Data Entry
Therapeutic Management, Delivery, and Postpartum Risk Assessment and Screening in Gestational Diabetes [Entered Retrospectively]	6/18/13	12/30/13	Johns Hopkins University EPC	1	3	3	43	Manual entry
Therapies for Children with Autism Spectrum Disorders [Entered Retrospectively]	8/2/13	12/30/13	Vanderbilt EPC	1	2	2	170	Manual entry
Off-Label Use of Atypical Antipsychotics: An Update [Entered Retrospectively]	8/18/13	12/30/13	Tufts EPC	1	1	4	129	Manual entry
Treatment of Common Hip Fractures [Entered Retrospectively]	9/20/13	12/30/13	Minnesota EPC	0	2	8	85	Manual entry
First- and Second- Generation Antipsychotics for Children and Young Adults [Entered Retrospectively]	12/2/13	12/30/13	University of Alberta EPC	1	1	4	81	Manual entry, Import
Blood Pressure Targets in CKD	7/2/12	12/30/13	Tufts Medical Center	4	1	2	3	Manual entry
Sugars and Health - Evidence Map	7/9/13	1/15/14	Tufts University School of Medicine	6	2	2	213	Manual entry

SRDR Annual Report, December 2016 to November 2017

Project Title	Created Date	Published Date	Name of Organization	No. of Collaborators	No. of Extraction Forms	No. of Key Questions	No. of Studies	Method of Data Entry
Imaging Techniques for Treatment Evaluation for Metastatic Breast Cancer [Retrospectively Entered]	6/4/14	6/27/14	Pacific Northwest EPC	3	1	1	17	Manual entry
Second-Generation Antidepressants in the Pharmacologic Treatment of Adult Depression: An update of the 2007 Comparative Effectiveness Review [Entered Retrospectively]	7/1/14	7/30/14	RTI-UNC EPC	1	2	2	221	Import
Treatment to Prevent Fractures in Men and Women with Low Bone Density or Osteoporosis: Update of a 2007 Report [Entered Retrospectively]	8/5/14	8/8/14	Southern California EPC-RAND Corporation	1	5	5	182	Import
Treatment of Primary and Secondary Osteoarthritis of the Knee [Entered Retrospectively]	7/25/14	8/14/14	Blue Cross and Blue Shield Association Technology EPC	1	5	5	77	Import, Upload
The lack of evidence for PET or PET/CT surveillance of patients with treated lymphoma, colorectal cancer, and head and neck cancer	10/25/12	9/5/14	Brown EPC	5	1	2	12	Manual entry
Fructose Consumption and Non-alcoholic Fatty Liver Disease (NAFLD)	2/1/13	9/5/14	International Life Sciences Institute	4	4	5	23	Manual entry
Benefits and Harms of Routine Preoperative Testing: Comparative Effectiveness Review 2013	3/14/13	9/5/14	Tufts EPC	7	4	4	220	Manual entry
Decision Aids for Cancer Screening and Treatment	7/25/13	9/5/14	Cochrane Complementary and Alternative Medicine Field	6	2	2	74	Manual entry
Imaging Tests for the Diagnosis and Staging of Pancreatic Adenocarcinoma	7/2/14	9/16/14	ECRI Institute-Penn Medicine EPC	2	5	6	121	Manual entry, Import
Diet and PA for Prevention of Diabetes-Full Data Extraction	2/12/13	9/25/14	Tufts EPC	8	1	1	50	Manual entry

SRDR Annual Report, December 2016 to November 2017

Project Title	Created Date	Published Date	Name of Organization	No. of Collaborators	No. of Extraction Forms	No. of Key Questions	No. of Studies	Method of Data Entry
Venous Thromboembolism Prophylaxis in Orthopedic Surgery [Entered Retrospectively]	11/5/14	11/14/14	University of Connecticut-Hartford Hospital EPC	1	8	8	149	Import, Upload
Effectiveness of Early Diagnosis, Prevention, and Treatment of Clostridium difficile Infection [Entered Retrospectively]	9/17/14	12/12/14	Minnesota EPC	2	10	10	112	Import
Oral Diabetes Medications for Adults with Type 2 Diabetes: An Update [Entered Retrospectively]	12/9/14	12/12/14	Johns Hopkins University EPC	1	4	4	176	Import, Upload
Treatments for Ankyloglossia and Ankyloglossia with Concomitant Lip-tie	10/20/14	1/26/15	Vanderbilt EPC	4	2	6	43	Manual entry
Procedures for Managing Postpartum Hemorrhage: A Systematic Review	12/31/14	2/9/15	Vanderbilt EPC	1	2	5	73	Manual entry
Low-calorie sweeteners and body weight and composition: a meta-analysis of randomized controlled trials and prospective cohort studies	3/19/15	3/19/15	Exponent, Inc.	1	2	2	24	Import
Psychosocial and Pharmacologic Interventions for Disruptive Behavior in Children and Adolescents	4/9/15	4/13/15	Vanderbilt EPC	1	1	2	97	Import
Pain Management Injection Therapies for Low-back Pain [Entered Retrospectively]	3/27/15	4/21/15	Pacific Northwest EPC	2	1	7	92	Manual entry, Upload
Diet-Related Fibers and Human Health Outcomes, Version 1 (retired version)	4/27/15	4/28/15	International Life Sciences Institute	1	1	1	868	Import
Treatments for Fibromyalgia in Adult Subgroups	2/12/15	5/1/15	Minnesota EPC	1	8	12	75	Import
Interventions to Reduce Antibiotic Prescribing for Uncomplicated Acute Respiratory Tract Infections [Entered Retrospectively]	6/18/14	5/5/15	Pacific Northwest EPC	1	1	6	133	Upload

SRDR Annual Report, December 2016 to November 2017

Project Title	Created Date	Published Date	Name of Organization	No. of Collaborators	No. of Extraction Forms	No. of Key Questions	No. of Studies	Method of Data Entry
Catheter Ablation for Treatment of Atrial Fibrillation [Prospectively Entered]	4/22/14	5/19/15	Pacific Northwest EPC	10	2	7	50	Manual entry
Health Information Exchange [Entered Retrospectively]	4/24/15	5/20/15	Pacific Northwest EPC	2	1	8	136	Upload
Treatment of Non-Metastatic Muscle-Invasive Bladder Cancer [Entered Retrospectively]	3/27/15	6/10/15	Pacific Northwest EPC	2	1	4	40	Upload
Emerging Approaches to Diagnosis and Treatment of Non-Muscle-Invasive Bladder Cancer [Entered Retrospectively]	5/18/15	6/10/15	Pacific Northwest EPC	2	1	8	199	Upload
Management and Outcomes of Binge-Eating Disorder (BED)	1/8/15	6/30/15	RTI-UNC EPC	1	3	15	84	Import, Upload
Management Strategies to Reduce Psychiatric Readmissions: Technical Brief	2/26/15	7/10/15	RTI-UNC EPC	2	4	4	72	Import
Imaging for the Pretreatment Staging of Small Cell Lung Cancer	6/27/14	7/24/15	ECRI Institute-Penn Medicine EPC	2	1	3	7	Manual entry
Strategies to Improve Mental Health Care for Children and Adolescents	3/11/15	7/24/15	RTI-UNC EPC	6	1	3	16	Manual entry
Home-Based Primary Care Interventions [Retrospectively Entered]	7/29/15	9/4/15	Pacific Northwest EPC	2	1	3	20	Upload
Imaging Techniques for the Diagnosis and Staging of Hepatocellular Carcinoma [Retrospectively Entered]	6/26/14	9/5/15	Pacific Northwest EPC	5	9	9	281	Import, Upload
Genetic Testing for Developmental Disabilities, Intellectual Disability, and Autism Spectrum Disorder	7/31/15	9/9/15	ECRI Institute-Penn Medicine EPC	1	1	2	141	Import, Upload
Behavioral programs for diabetes mellitus	1/29/14	9/21/15	University of Alberta EPC	5	2	6	166	Manual entry

SRDR Annual Report, December 2016 to November 2017

Project Title	Created Date	Published Date	Name of Organization	No. of Collaborators	No. of Extraction Forms	No. of Key Questions	No. of Studies	Method of Data Entry
Sling surgery for stress urinary incontinence in women: SGS 2013	2/5/13	9/30/15	Society of Gynecologic Surgeons	13	2	2	104	Manual entry
Environmental Cleaning for the Prevention of Healthcare-Associated Infections	9/22/15	10/5/15	ECRI Institute-Penn Medicine EPC	1	2	4	70	Import, Upload
Treatments for Fecal Incontinence [entered retrospectively]	10/15/15	10/27/15	Minnesota EPC	1	1	2	117	Upload
SGS: Local Estrogen for Genitourinary Complaints in Post-Menopausal Women	7/25/13	10/28/15	Society of Gynecologic Surgeons	12	1	1	56	Manual entry
Noninvasive Treatments for Low Back Pain [Entered Retrospectively]	7/23/15	11/10/15	Pacific Northwest EPC	2	1	2	156	Upload
Management of Insomnia Disorder [Entered Retrospectively]	10/27/15	11/18/15	Minnesota EPC	1	1	2	139	Upload
Improving Cultural Competence to Reduce Health Disparities [Entered Retrospectively]	10/27/15	11/18/15	Minnesota EPC	1	1	5	86	Upload
Early Diagnosis, Prevention, and Treatment of C. difficile: Update [Entered Retrospectively]	10/27/15	11/18/15	Minnesota EPC	1	1	4	92	Upload
Recommendations for decision and simulation modeling	11/6/13	12/1/15	Brown EPC	3	1	1	69	Import
Phenotypes and body mass in women with PCOS identified in Referral vs. Unselected populations: systematic review and meta-analysis	1/23/15	12/4/15	Medical College of Georgia, Georgia Regents University, Augusta, Georgia	4	1	2	43	Manual entry
Adverse Events in Women with Silicone Gel Breast Implants: A Systematic Review	10/4/13	12/7/15	Tufts Medical Center	4	1	1	57	Manual entry
Disparities Within Serious Mental Illness Technical Brief	11/5/15	12/16/15	RTI-UNC EPC	3	1	4	26	Manual entry
Low-Calorie Sweeteners and Health: An Evidence Map Database	6/29/15	1/8/16	International Life Sciences Institute	2	1	1	223	Import, Upload

SRDR Annual Report, December 2016 to November 2017

Project Title	Created Date	Published Date	Name of Organization	No. of Collaborators	No. of Extraction Forms	No. of Key Questions	No. of Studies	Method of Data Entry
Diet-Related Fibers and Human Health Outcomes, Version 2	1/5/16	1/8/16	International Life Sciences Institute	1	1	1	919	Import
Total Worker Health® (TWH)	9/10/15	1/11/16	RTI-UNC EPC	3	2	6	24	Upload
Noninvasive Testing for Coronary Artery Disease [Entered Retrospectively]	12/23/15	1/22/16	Pacific Northwest EPC	2	1	6	46	Upload
Newer Medications for Lower Urinary Tract Symptoms Attributed to Benign Prostatic Hyperplasia [entered retrospectively]	10/27/15	1/26/16	Minnesota EPC	1	1	3	57	Upload
Nonpharmacologic Interventions for Agitation and Aggression in Dementia [entered retrospectively]	10/27/15	1/26/16	Minnesota EPC	1	1	4	130	Upload
Nonpharmacological Versus Pharmacological Treatments for Adult Patients with Major Depressive Disorder - Psychotherapy Interventions	11/5/15	2/22/16	RTI-UNC EPC	2	7	10	20	Import
Nonpharmacological Versus Pharmacological Treatments for Adult Patients with Major Depressive Disorder - CAM Interventions	1/19/16	2/22/16	RTI-UNC EPC	1	6	10	21	Import
Nonpharmacological Versus Pharmacological Treatments for Adult Patients with Major Depressive Disorder - Exercise Interventions	1/19/16	2/22/16	RTI-UNC EPC	1	3	9	2	Import
Nonpharmacological Versus Pharmacological Treatments for Adult Patients with Major Depressive Disorder - Medication Strategies	2/12/16	2/22/16	RTI-UNC EPC	1	4	4	4	Import
Diet and Physical Activity for Prevention of Diabetes: Evidence Map	4/5/13	3/3/16	Tufts Center for Clinical Evidence Synthesis	6	1	1	241	Manual entry

SRDR Annual Report, December 2016 to November 2017

Project Title	Created Date	Published Date	Name of Organization	No. of Collaborators	No. of Extraction Forms	No. of Key Questions	No. of Studies	Method of Data Entry
Diagnosis and Management of Infantile Hemangioma	6/4/15	3/14/16	Vanderbilt EPC	1	2	3	128	Import, Upload
Critical Analysis of the Evidence Safety in Nursing Home Settings	1/28/16	3/14/16	Vanderbilt EPC	1	1	4	26	Import
Systematic Review of Calcineurin Inhibitors for Renal Transplant	9/22/15	3/22/16	ECRI Institute-Penn Medicine EPC	1	3	3	107	Manual entry
Strategies to De-escalate Aggressive Behavior (DAB) in Psychiatric Patients	9/29/15	3/28/16	RTI-UNC EPC	4	2	3	29	Upload
CER Management Strategies for Renal Artery Stenosis: 2014 Update	9/18/14	7/21/16	Brown EPC	10	1	3	80	Manual entry
Telehealth: Mapping the Evidence for Patient Outcomes from Systematic Reviews [Entered Retrospectively]	7/11/16	7/21/16	Pacific Northwest EPC	2	1	2	58	Upload
Acupuncture for glaucoma (2013)	7/1/16	10/6/16	Cochrane Eye and Vision Group	1	1	1	1	Manual entry, Import
Retinal Prostheses in the Medicare Population [Entered Retrospectively].	8/29/16	11/28/16	ECRI Institute-Penn Medicine EPC	3	1	8	40	Upload
Medication-Assisted Treatment Models of Care for Opioid Use Disorder in Primary Care Settings [Entered Retrospectively]	9/7/16	12/21/16	Pacific Northwest EPC	3	1	1	32	Upload
Diet-Related Fibers and Human Health Outcomes, Version 3.0 (Retired)	12/31/16	1/13/17	International Life Sciences Institute	1	1	1	983	Manual entry
Tonsillectomy for Obstructive Sleep-Disordered Breathing or Recurrent Throat Infection in Children	5/6/16	1/16/17	Vanderbilt EPC	1	1	1	242	Upload
Interventions to Prevent Age-Related Cognitive Decline, Mild Cognitive Impairment, and Clinical Alzheimer's-Type Dementia [Entered Retrospectively]	1/6/17	1/30/17	Minnesota EPC	1	1	3	263	Upload

SRDR Annual Report, December 2016 to November 2017

Project Title	Created Date	Published Date	Name of Organization	No. of Collaborators	No. of Extraction Forms	No. of Key Questions	No. of Studies	Method of Data Entry
Neuroprotection for treatment of glaucoma in adults (2013)	9/7/16	3/2/17	Cochrane Eye and Vision Group	2	1	1	1	Manual entry, Import
Lens extraction for chronic angle-closure glaucoma (2006)	9/7/16	3/3/17	Cochrane Eye and Vision Group	2	1	1	2	Manual entry, Import
Peripheral iridotomy for pigmentary glaucoma (2016)	9/7/16	3/3/17	Cochrane Eye and Vision Group	2	1	1	5	Manual entry, Import
Management of Uterine Fibroids	3/28/16	3/8/17	Vanderbilt EPC	2	1	4	109	Upload
Assessment Tools for Palliative Care	2/28/17	3/21/17	Johns Hopkins University EPC	1	1	4	213	Import
Diet-Related Fibers and Human Health Outcomes, Version 3.1	2/17/17	3/30/17	International Life Sciences Institute	1	1	1	991	Manual entry
Systematic review of the adverse bone and calcium balance effects of caffeine consumption in healthy adults, pregnant women, adolescents, and children	2/28/17	4/20/17	International Life Sciences Institute	1	1	1	14	Upload
Systematic review of the adverse cardiovascular effects of caffeine consumption in healthy adults, pregnant women, adolescents, and children	4/10/17	4/20/17	International Life Sciences Institute	1	1	1	203	Manual entry
Systematic review of acute adverse effects of caffeine consumption in healthy adults, pregnant women, adolescents, and children	4/10/17	4/20/17	International Life Sciences Institute	1	1	1	26	Upload
Systematic review of the adverse behavioral effects of caffeine consumption in healthy adults, pregnant women, adolescents, and children	4/10/17	4/20/17	International Life Sciences Institute	1	1	1	80	Manual entry
Systematic review of the adverse reproductive and developmental effects of caffeine consumption in healthy adults and pregnant women	4/11/17	4/20/17	International Life Sciences Institute	1	1	1	58	Upload

SRDR Annual Report, December 2016 to November 2017

Project Title	Created Date	Published Date	Name of Organization	No. of Collaborators	No. of Extraction Forms	No. of Key Questions	No. of Studies	Method of Data Entry
Glasgow Coma Scale for Field Triage of Trauma: A Systematic Review [Entered Retrospectively]	9/12/16	5/19/17	Pacific Northwest EPC	3	3	2	32	Import
Systematic Review on the Use of Cryotherapy Versus Other Treatments for Basal Cell Carcinoma	4/8/17	6/20/17	California Davis, Dept. of Dermatology	2	1	2	38	Upload
VTE thromboprophylaxis with major orthopedic surgery	2/21/16	7/14/17	Brown EPC	6	1	1	157	Import
Treatment Strategies for Patients with Lower Extremity Chronic Venous Disease (LECVD)	6/30/17	7/18/17	Duke University EPC	2	3	3	111	Import
Medical Therapies for Children with Autism Spectrum Disorders: An Update	11/1/16	7/26/17	Vanderbilt EPC	2	1	6	109	Import
Interventions Targeting Sensory Challenges in Children with Autism Spectrum Disorder (ASD): An Update	11/1/16	7/26/17	Vanderbilt EPC	2	1	6	24	Import
The Role of Immunotherapy in the Treatment of Asthma	7/25/17	8/10/17	Johns Hopkins University EPC	1	2	4	130	Upload
Fractional Exhaled Nitric Oxide Clinical Utility in Asthma Management	8/22/17	8/22/17	Mayo Clinic EPC	1	1	1	171	Upload
Anxiety in Children	6/2/17	8/23/17	Mayo Clinic EPC	1	1	2	206	Upload
Diagnosis and Treatment of Attention Deficit Hyperactivity Disorder (ADHD) in Children and Adolescents	7/13/17	9/5/17	Duke University EPC	2	2	3	90	Upload
Diagnostic Accuracy of Screening Tests and Treatment of Post-Acute Coronary Syndrome (ACS) Depression: A Systematic Review	7/21/17	11/3/17	Duke University EPC	2	2	2	10	Upload
Treatments for Adults with Schizophrenia: A Systematic Review [Entered Retrospectively]	5/8/17	11/8/17	Pacific Northwest EPC	4	4	4	91	Upload