

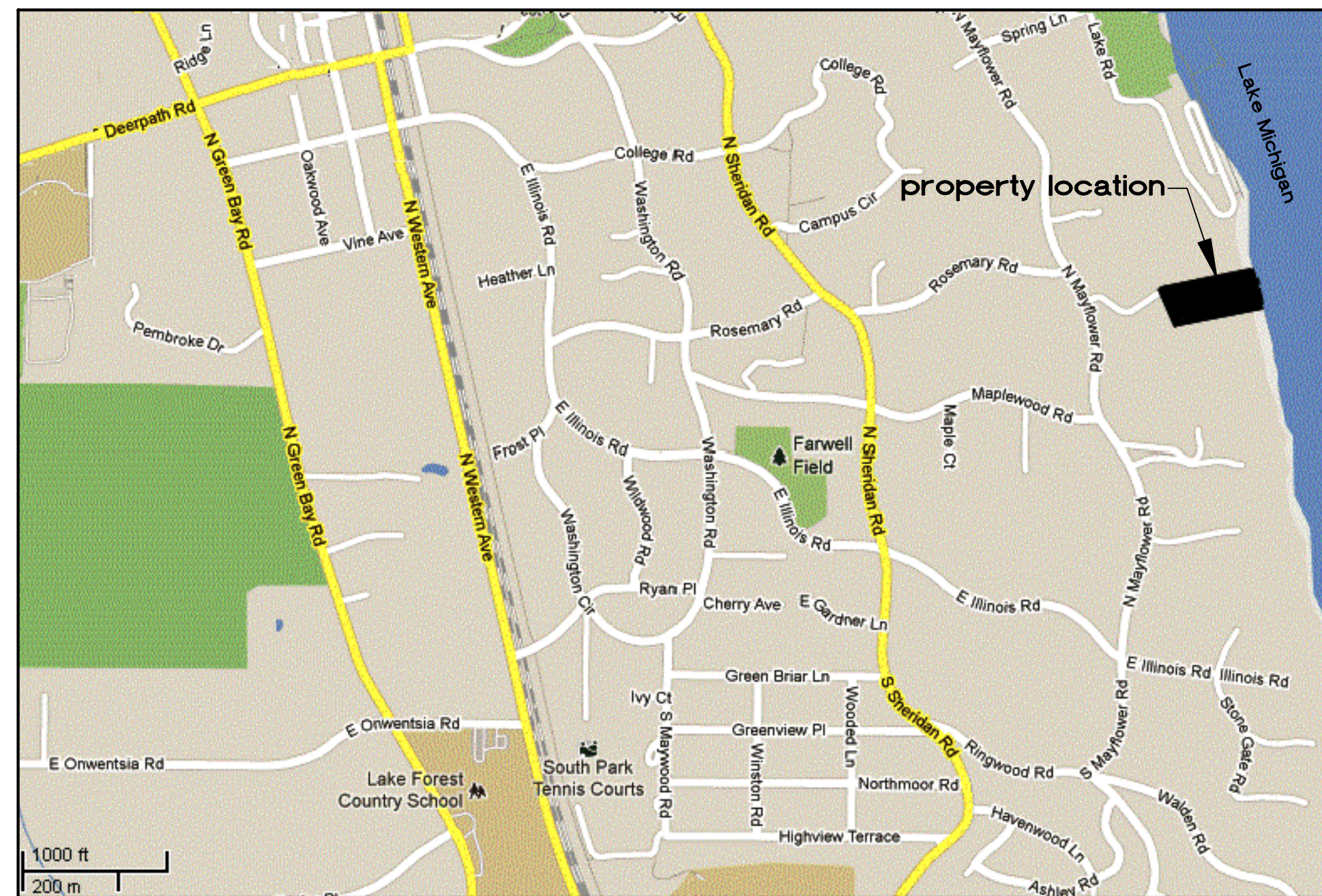
plat of survey

of
 Lot 4 in HPH Industries, Ltd. Subdivision according to the plat thereof
 recorded as Document No. 3019131 on May 15, 1991, in Section 34,
 Township 44 North, Range 12 East of the 3rd Principal Meridian, City of Lake
 Forest, Lake County, Illinois

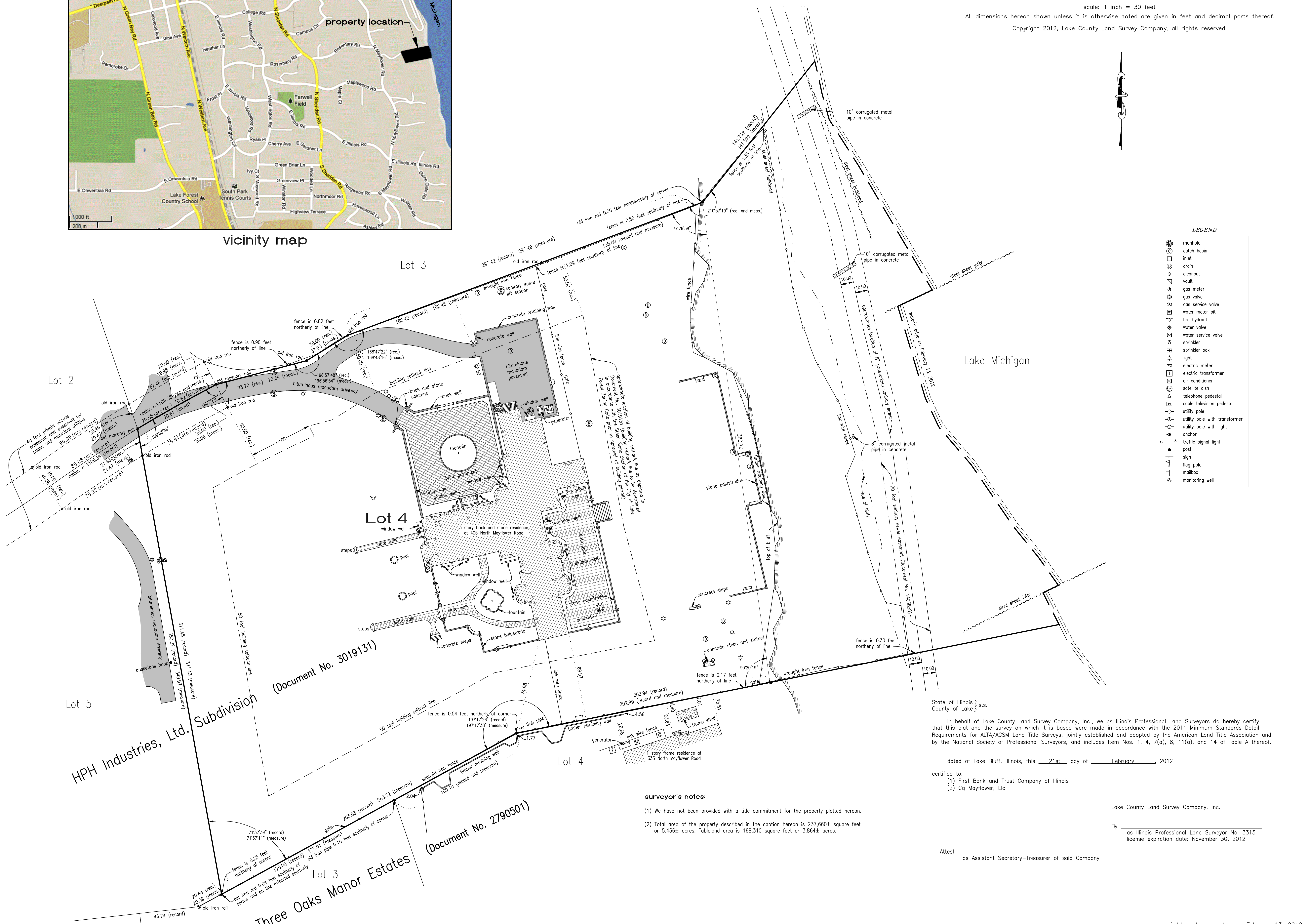
scale: 1 inch = 30 feet

All dimensions hereon shown unless it is otherwise noted are given in feet and decimal parts thereof.

Copyright 2012, Lake County Land Survey Company, all rights reserved.



vicinity map



LEGEND

- ⊙ manhole
- ⊕ catch basin
- inlet
- ⊖ drain
- cleanout
- ⊞ vault
- ⊗ gas meter
- ⊕ gas valve
- ⊗ gas service valve
- ⊞ water meter pit
- ⊕ fire hydrant
- ⊕ water valve
- ⊕ water service valve
- ⊕ sprinkler
- ⊕ sprinkler box
- ⊕ light
- ⊕ electric meter
- ⊕ electric transformer
- ⊕ air conditioner
- ⊕ satellite dish
- ⊕ telephone pedestal
- ⊕ cable television pedestal
- ⊕ utility pole
- ⊕ utility pole with transformer
- ⊕ utility pole with light
- ⊕ anchor
- ⊕ traffic signal light
- ⊕ post
- ⊕ sign
- ⊕ flag pole
- ⊕ mailbox
- ⊕ monitoring well

surveyor's notes:
 (1) We have not been provided with a title commitment for the property platted hereon.
 (2) Total area of the property described in the caption hereon is 237,660± square feet or 5.456± acres. Tableland area is 168,310 square feet or 3.864± acres.

State of Illinois } s.s.
 County of Lake }
 In behalf of Lake County Land Survey Company, Inc., we as Illinois Professional Land Surveyors do hereby certify that this plat and the survey on which it is based were made in accordance with the 2011 Minimum Standards Detail Requirements for ALTA/ACSM Land Title Surveys, jointly established and adopted by the American Land Title Association and by the National Society of Professional Surveyors, and includes Item Nos. 1, 4, 7(a), 8, 11(a), and 14 of Table A thereof.

dated at Lake Bluff, Illinois, this 21st day of February, 2012
 certified to:
 (1) First Bank and Trust Company of Illinois
 (2) Cg Mayflower, Llc

Lake County Land Survey Company, Inc.
 By _____ as Illinois Professional Land Surveyor No. 3315
 license expiration date: November 30, 2012
 Attest _____ as Assistant Secretary-Treasurer of said Company

| | | |
|---|--|--|
| for First Bank and Trust Company of Illinois 300 East Northwest Highway Palatine, Illinois, 60067 | from the office of Lake County Land Survey Company Land Surveyors and Civil Engineers 920 West North Shore Drive Lake Bluff, Illinois, 60044 (847) 234-8909 Professional Design Firm 184.005459 | Order No. 17532 Field Book C55 page 35 Date February 21, 2012 File No. 9-6-1585 |
|---|--|--|

U:\Land Projects\EX\12532-JANISER\Map\12532-ANISER.dwg 2/21/2012 11:22:29 AM CST

field work completed on February 13, 2012