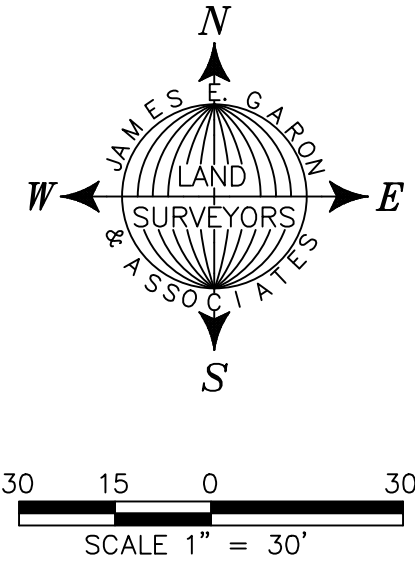
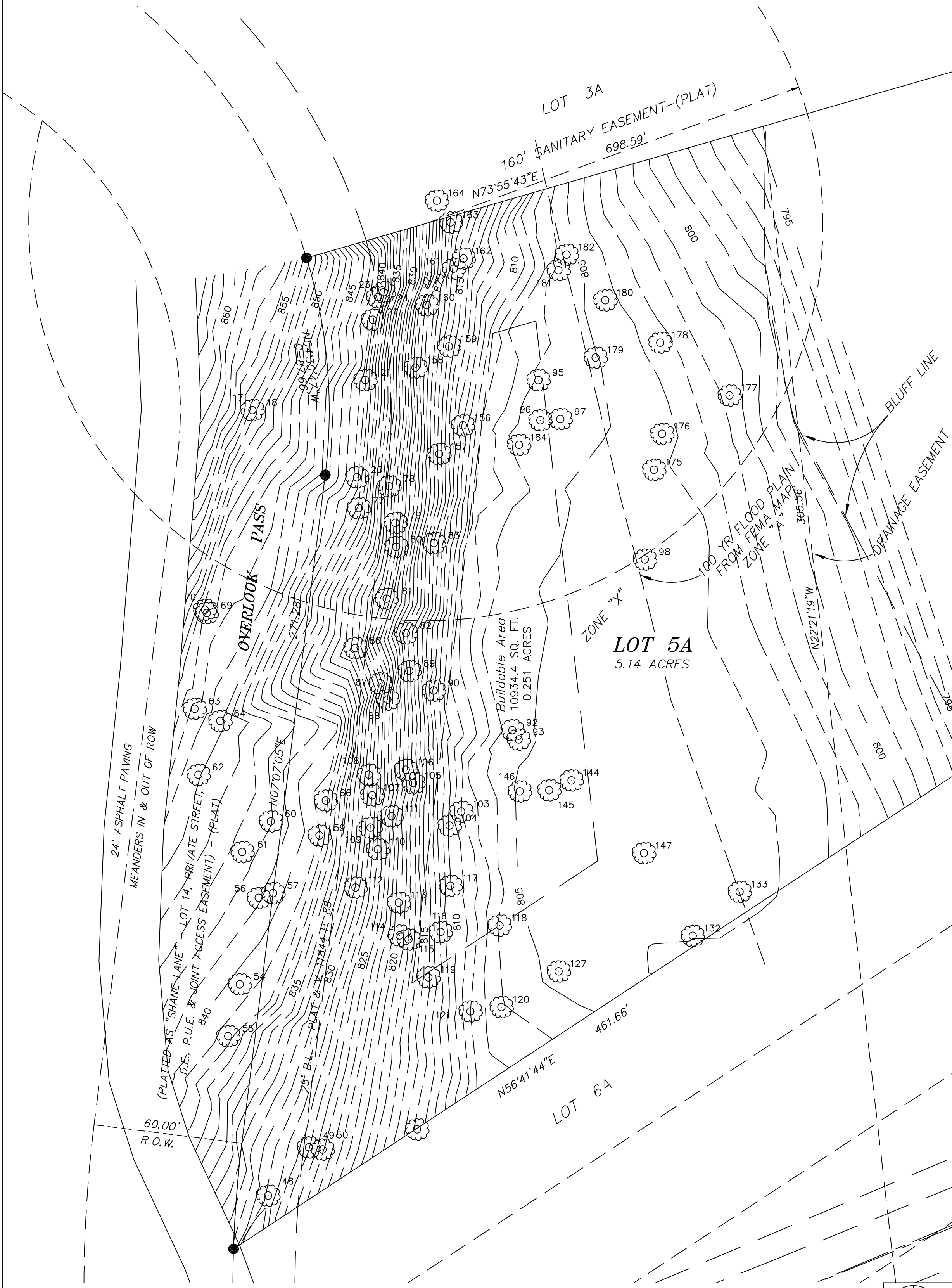


**TREE & TOPOGRAPHIC SURVEY
OF A PORTION OF
LOT 5A, AMENDED PLAT OF
BARTON CREEK PRESERVE PHASE III,
AND LOTS 3A AND 6A,
AMENDED PLAT OF LOTS 3, 4 & 6
BARTON CREEK PRESERVE PHASE III
RECORDED IN BK. 98, PG. 86. PLAT RECORDS
TRAVIS COUNTY, TEXAS**



LEGEND

⊕	CALCULATED POINT
●	1/2" REBAR FOUND
○	1/2" REBAR SET W/CAP
⊙	STAMPED J.E. GARON RPLS 4303
⊗	1/2" PIPE SET (UNLESS NOTED)
⊘	1/2" PIPE FOUND (UNLESS NOTED)
⊛	COTTON SPINDLE FOUND
▲	604 NAIL FOUND
△	604 NAIL SET
⊙	TREE (SIZE & TYPE NOTED)
⊗	FENCE POST FOUND
—	WOOD FENCE
—	WIRE FENCE
—	CHAIN LINK FENCE
—	P.U.E. PUBLIC UTILITY EASEMENT
—	D.E. DRAINAGE EASEMENT
—	BUILDING LINE
●	POWER POLE
—	OVERHEAD ELECTRIC LINE
—	DOWN GUY
—	(BRG-DIST.) RECORD CALL



TagNo.	Tree List Description	Size
17	Live Oak	28"
18	Red Oak	9"
20	Live Oak	20"
21	Red Oak	9&8"
22	Live Oak	6"
23	Live Oak	10"
24	Red Oak	8"
48	Red Oak	18"
49	Red Oak	8"
50	Elm	16"
54	Live Oak	12"
55	Hackberry	9"
56	Elm	8&9"
57	Live Oak	19"
59	Red Oak	10"
60	Elm	14"
61	Black Jack Oak	11"
62	Live Oak	13"
63	Live Oak	12"
64	Live Oak	11"
66	Hackberry	6"
69	Live Oak	8"
70	Live Oak	6"
77	Elm	12"
78	Red Oak	11"
79	Hackberry	8"
80	Hackberry	9"
81	Elm	19"
82	Elm	18"
83	Elm	18"
86	Elm	7,7 & 8"
87	Elm	11"
88	Elm	16"
89	Elm	9"
90	Hackberry	9"
92	Elm	16"
93	Elm	20"
95	Elm	6"
96	Elm	10"
97	Elm	9"
98	Live Oak	11"
103	Elm	11"
104	Elm	7"
105	Elm	8"
106	Elm	17"
107	Elm	10"
108	Red Oak	6"
109	Elm	7"
110	Elm	11"
111	Hackberry	6"
112	Elm	10"
113	Hackberry	6"
114	Elm	9"
115	Elm	6"
116	Elm	7"
117	Elm	8"
118	Elm	13"
119	Hackberry	10"
120	Elm	15"
121	Elm	7"
122	Elm	8&15"
127	TREE	6"
132	Mesquite	11"
133	Mesquite	10"
144	TREE	7"
145	TREE	6"
146	TREE	6"
147	TREE	6"
156	Hackberry	8"
157	Elm	16"
158	Hackberry	6"
159	Elm	11"
160	Elm	9"
161	Elm	6"
162	Elm	14"
163	Elm	7"
164	Elm	7"
175	Mesquite	7"
176	Elm	12"
177	TREE	6"
178	Elm	7"
179	Elm	10"
180	Elm	9"
181	Elm	9"
182	Elm	7"
184	Elm	7"

BENCHMARK: RAILROAD SPIKE IN BASE 12"
LIVE OAK 15' +/- EAST LOTS 3 & 4 AT
(SHANE LN.) OVER LOOK PASS
ELEV. 877.52

JAMES E. GARON & ASSOC.
PROFESSIONAL LAND SURVEYORS
924 Main Street
Bastrop, Texas 78602
(512) 303-4185

FILE: SER\CO\TRA\SUB\BCP\PH 3\B68806.DWG
F.B. NO. :B-332/3