

THE ARUBA

APPROXIMATE SQUARE FOOTAGE

Living area	1380 sq. ft.
Balcony	379 sq. ft.
	<hr/>
	1759 sq. ft.

RESIDENCE FEATURES.

- Minimum nine ft. high ceilings in main living areas.*
- Elegant, double door entry.*
- Balconies with panoramic views for true, indoor/outdoor living and entertaining.*
- Ceramic tile floor in elevator lobby.*
- Luxurious wall-to-wall carpeting in choice of decorator colors in all living areas.*
- Individually controlled, high efficiency air-conditioning and heating systems.*
- Mirrored by-pass closet doors where applicable.*
- Energy saving solar tinted windows and sliding glass doors.*
- Convenient ceiling fan electrical outlets in all bedrooms, den and living room.*
- Pre-wired for telephone and cable television.*
- 52-gallon hot water capacity.*

MASTER SUITE FEATURES.

- Luxurious whirlpool tub set into imported marble platform.*
- Imported marble floor.*
- Custom-designed vanities with Corian counter tops.*
- Designer selected Kohler faucets.*
- Mirrors and lighting over vanities.*
- Walk-in closets with custom designed interior shelf and hanging system.*

GUEST BATH/POWDER ROOM.

- Corian vanity top.*
- Choice of imported tile on floor.*
- Kohler fixtures.*

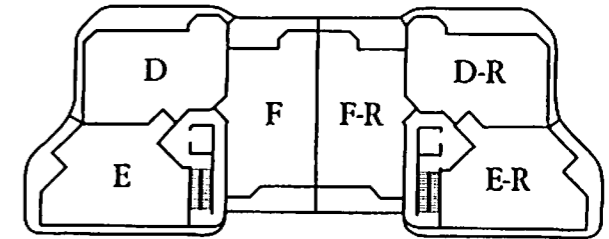
2 BEDROOMS, 2 BATHS, WITH GREAT ROOM. SECOND BEDROOM CONVERTIBLE TO MEDIA ROOM.

KITCHEN FEATURES.

- Exclusive Kitchen Series cabinetry custom-designed for Grand Bay in a wide choice of woods, laminates and finishes.*
- Corian counter tops.*
- Under-cabinet counter lighting.*
- Beautiful, easy-to-maintain designer ceramic tile floors.*
- Large, double Kohler enameled sink with single lever faucet and spray.*
- Top of the line appliances include:*
 - 30 cubic foot Sub Zero refrigerator.*
 - Kitchen Aid dishwasher.*
 - Kitchen Aid cooktop.*
 - Kitchen Aid double wall oven with microwave.*
 - Kitchen Aid sound-insulated disposal.*
 - Kitchen Aid instant hot water dispenser.*

LAUNDRY ROOM FEATURES.

- Maytag washer and dryer.*
- Upper storage cabinets.*



TYPICAL FLOOR PLAN

Note: The above items are subject to their availability. In order to allow developer to construct the units in an orderly manner in accordance with developer's time schedule, developer reserves the right to substitute materials, equipment, and appliances of equal or superior quality, and reserves the right to make changes in the plans and specifications that may be found necessary or desirable during the construction of the units and buildings within which the units are located.