



Bottom of Bag

### MATERIALS

**Lily® Sugar'n Cream®** (2.5 oz/70.9 g; 120 yds/109 m)  
Hot Green (O1712) **3 balls**

Set of four size U.S. 8 (5 mm) double-pointed knitting needles. Size U.S. 8 (5 mm) circular knitting needle 16" [40.5 cm] long **or size needed to obtain gauge.**

### ABBREVIATIONS: [www.yarnspirations.com/abbreviations](http://www.yarnspirations.com/abbreviations)

**Alt** = Alternate(ing)  
**Approx** = Approximate(ly)  
**K** = Knit  
**K1tbl** = Knit next stitch through back loop.  
**K2tog** = Knit 2 stitches together  
**P** = Purl  
**Pat** = Pattern  
**Pssso** = Pass slipped stitch

**over**  
**P2sso** = Pass two slipped stitches over.  
**RS** = Right side  
**Rem** = Remain(ing)  
**Rep** = Repeat  
**Rnd(s)** = Round(s)  
**Sl1** = Slip next stitch knitwise  
**Sl2** = Slip next 2 stitches

together  
**Ssk** = Slip next 2 stitches knitwise one at a time. Pass them back onto left-hand needle, then knit through back loops together.  
**St(s)** = Stitch(es)  
**Tog** = Together  
**Yo** = Yarn over



INTERMEDIATE

### MEASUREMENT

Approx 17" [43 cm] long, excluding handles.

### GAUGE

18 sts and 24 rows = 4" [10 cm] in stocking st.

### INSTRUCTIONS

**Note:** Border is worked horizontally, then sts are picked up along side edge of Border and Bag is worked from top down.

**Border** (See Chart I on page 3). With pair of double-pointed needles, cast on 24 sts.

**1st row:** (RS). K3. P1. ssk. yo. K5. (yo. K1) 5 times. yo. K5. yo. K2tog. P1 (inner edge). 30 sts.

**2nd and alt rows:** K1. Purl to last 4 sts. K4.

**3rd row:** K3. P1. ssk. yo. ssk. K1. (K2tog. yo) twice. K3. yo. K1. yo. K3. (yo. ssk) twice. K1. K2tog. yo. K2tog. P1.

**5th row:** K3. P1. ssk. yo. Sl2. K1. p2sso. yo. K2tog. yo. K5. yo. K1. yo. K5. yo. ssk. yo. Sl2. K1. p2sso. yo. K2tog. P1.

**7th row:** K3. P1. Sl1. K2tog. pssso. yo. K2tog. yo. K1. yo. ssk. K1. K2tog. yo. Sl2. K1. p2sso. yo. ssk. K1. K2tog. yo. K1. yo. ssk. yo. K3tog. P1. 26 sts.

**9th row:** K3. P1. K1. K2tog. yo. K3. (yo. Sl2. K1. p2sso) 3 times. yo. K3. yo. ssk. K1. P1. 24 sts.

**10th row:** As 2nd row.

Rep 1st to 10th rows for Border pat until work from beg measures approx 27" [68.5 cm], ending with 10th row. Cast off. Sew cast on and cast off edges tog.

### Bag

Turn Border sideways. With RS facing and circular needle, pick up and knit 136 sts across inner edge of Border. Join in rnd, placing marker on first st. Knit 4 rnds.

See Chart II on page 3.

**1st rnd:** (K16. K2tog. yo. K1tbl. yo. ssk. K13) 4 times.

**2nd and alt rnds:** Knit.

**3rd rnd:** (K15. K2tog. yo. K1tbl. K1. K1tbl. yo. ssk. K12) 4 times.

**5th rnd:** (K14. K2tog. yo. K1tbl. K3. K1tbl. yo. ssk. K11) 4 times.

**7th rnd:** (K13. K2tog. yo. K1tbl. K1. K2tog. yo. K2. K1tbl. yo. ssk. K10) 4 times.



**9th rnd:** (K8. K2tog. yo. K1tbl. yo. Sl1. K2tog. pss0. yo. K1tbl. K1. K2tog. yo. K1tbl. yo. ssk. K1. K1tbl. yo. K3tog. yo. K1tbl. yo. ssk. K5) 4 times.

**11th rnd:** [K7. (K2tog. yo. K1tbl. K1. K1tbl. yo. ssk. K1) 3 times. K3] 4 times.

**13th rnd:** (K6. \*K2tog. yo. K1tbl. K3. K1tbl. yo. ssk.\* K1. K1tbl. yo. Sl1. K2tog. pss0. yo. K1tbl. K1. Rep from \* to \* once more. K3) 4 times.

**15th rnd:** (K5. \*K2tog. yo. K1tbl. K1. K2tog. yo. K2. K1tbl. yo. ssk.\* K1. K1tbl. yo. ssk. K1. Rep from \* to \* once more. K2) 4 times.

**17th rnd:** [K4. K2tog. \*yo. K1tbl. K1. K2tog. yo. (K1tbl. yo. ssk. K1) twice.\* K1tbl. yo. Sl1. K2tog. pss0. Rep from \* to \* once more] 4 times.

**19th rnd:** (K3. K2tog. yo. K1tbl. \*K1. K2tog. yo. K1tbl. K1. K1tbl. yo. ssk. K1. K1tbl. yo. ssk.\* K1. K1tbl. yo. ssk. Rep from \* to \* once more) 4 times.

**21st rnd:** (K3. \*K1. K1tbl. yo. ssk. K1. K1tbl. yo. Sl1. K2tog. pss0. yo. K1tbl. K1. K2tog. yo. K1tbl.\* yo. ssk. Rep from \* to \* once more. K1) 4 times.

**23rd rnd:** [K5. (K1tbl. yo. ssk. K1) twice. \*K2tog. yo. K1tbl. K1.\* (K1tbl. yo. ssk. K1) 3 times. Rep from \* to \* once more. K1] 4 times.

**25th rnd:** (K6. \*K1tbl. yo. ssk. K1. K1tbl. yo. Sl1. K2tog. pss0. yo. K1tbl.\* K1. K2tog. yo. K1tbl. yo. ssk. K1. Rep from \* to \* once more. K3) 4 times.

**27th rnd:** [K7. (K1tbl. yo. ssk. K1) twice. K2tog. yo. K1tbl. K1. (K1tbl. yo. ssk. K1) 3 times. K3] 4 times.

**29th rnd:** (K6. \*K2tog. yo. K1tbl. yo. ssk. K1. K1tbl. yo. ssk.\* K1. K1tbl. yo. Sl1. K2tog. pss0. yo. K1tbl. K1. Rep from \* to \* once more. K3) 4 times.

**31st rnd:** [K5. \*K2tog. yo. K1tbl. K1.\* (K1tbl. yo. ssk. K1) 3 times. Rep from \* to \* once more. (K1tbl. yo. ssk. K1) twice. K1] 4 times.

**33rd rnd:** As 17th rnd.

**35th rnd:** As 19th rnd.

**37th rnd:** As 21st rnd.

**39th rnd:** As 23rd rnd.

**41st rnd:** (K6. \*K1tbl. yo. ssk. K1. K1tbl. K1. K2tog. yo. K1tbl.\* K1. K2tog. yo. K1tbl. yo. ssk. K1. Rep from \* to \* once more. K3) 4 times.

**43rd rnd:** (K7. \*K1tbl. yo. ssk. K1. K2tog. yo. K1tbl.\* K1. K2tog. yo. K1tbl. K1. K1tbl. yo. ssk. K1. Rep from \* to \* once more. K4) 4 times.

**45th rnd:** (K8. \*K1tbl. yo. Sl1. K2tog. pss0. yo. K1tbl.\* yo. ssk. K1. Rep from \* to \* once more. K1. K2tog. yo. Rep from \* to \* once more. K5) 4 times.

**47th rnd:** [K9. (K1tbl. K1) twice. (K1tbl. yo. ssk. K1) twice. K2tog. yo. (K1tbl. K1) twice. K1tbl. K6] 4 times.

**49th rnd:** (K14. K1tbl. yo. ssk. K1. K1tbl. K1. K2tog. yo. K1tbl. K11) 4 times.

**51st rnd:** (K15. K1tbl. yo. ssk. K1. K2tog. yo. K1tbl. K12) 4 times.

**53rd rnd:** (K16. K1tbl. yo. Sl1. K2tog. pss0. yo. K1tbl. K13) 4 times.

**55th rnd:** (K17. K1tbl. K1. K1tbl. K14) 4 times.

**56th rnd:** Knit.

**57th rnd:** (fold line). Purl to last 2 sts . P2tog. 135 sts.

**Shape bottom: Note:** Change to set of 4 double-pointed needles, when necessary.

**1st rnd:** \*(yo. K2tog) 6 times. K1. K2tog. Rep from \* around. 126 sts.

**2nd and alt rnds:** Knit.

**3rd rnd:** \*(yo. K2tog) 6 times. K2tog. Rep from \* around. 117 sts.

**5th rnd:** \*(yo. K2tog) 5 times. K1. K2tog. Rep from \* around. 108 sts.

**7th rnd:** \*(yo. K2tog) 5 times. K2tog. Rep from \* around. 99 sts.

**9th rnd:** \*(yo. K2tog) 4 times. K1. K2tog. Rep from \* around. 90 sts.

**11th rnd:** \*(yo. K2tog) 4 times. K2tog. Rep from \* around. 81 sts.

**13th rnd:** \*(yo. K2tog) 3 times. K1. K2tog. Rep from \* around. 72 sts.

**15th rnd:** \*(yo. K2tog) 3 times. K2tog. Rep from \* around. 63 sts.

**17th rnd:** \*(yo. K2tog) twice. K1. K2tog. Rep from \* around. 54 sts.

**19th rnd:** \*(yo. K2tog) twice. K2tog. Rep from \* around. 45 sts.

**21st rnd:** \*yo. K2tog. K1. K2tog. Rep from \* around. 36 sts.

**23rd rnd:** \*yo. K2tog. K2tog. Rep from \* around. 27 sts. Break yarn. Thread yarn through rem sts. Pull tightly. Fasten securely.

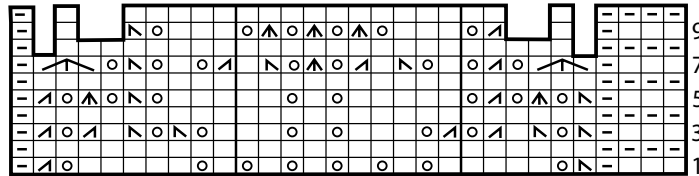
**Handle:** (make 1).

With circular needle, cast on 110 sts. Do not join. Working back and forth across needle, knit 12 rows. Cast off knitwise (WS).

Lay Bag flat. Place marker at each side of folded top. Sew Handle at markers.



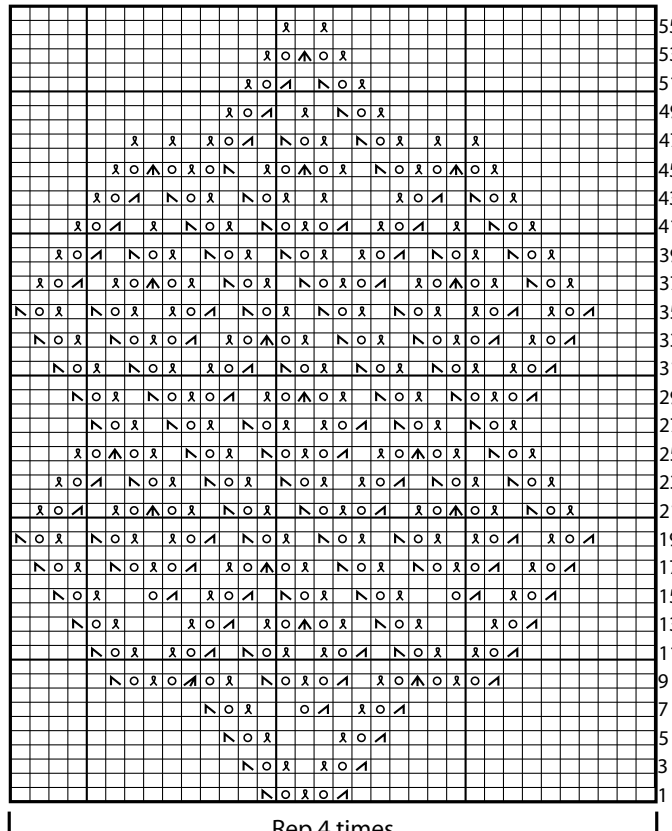
### Chart I



Inner edge

Start Here

### Chart II



Rep 4 times

Start Here

#### KEY

☐ - Knit on RS rows. Purl on WS rows.

☐ - Purl on RS rows. Knit on WS rows.

○ - yo

⊠ - K1tbl

⊠ - ssk

⊠ - K2tog

⊠ or ⊠ - Sl1, K2tog, pssso. or Sl2, K1, p2sso.

⊠ - K3tog.