



MATERIALS

Lily® Sugar'n Cream® (2.5 oz/70.9 g; 120 yds/109 m)
Contrast A Yellow (00010) **1 ball**
Contrast B Hot Orange (01628) **1 ball**
Contrast C White (00001) **1 ball**
 Size 4.5 mm (U.S. 7) knitting needles **or size needed to obtain gauge.**

ABBREVIATIONS: www.yarnspirations.com/abbreviations

Alt = Alternate(ing)
Approx = Approximate(ly)
Dec = Decrease(ing)
Inc = Increasing
K = Knit
K2tog = Knit 2 stitches together
MB = Make bobble. [(K1. P1) twice. K1] all in next st. 5 sts. **Turn.** P5. **Turn.**

ssk. K1. K2tog. **Turn.** P3. **Turn.** S1l. K2tog. pss0. 1 st remains. Bobble complete.
P = Purl
P2tog = Purl two stitches together
Pat = Pattern
Pss0 = Pass slipped stitch over
Rem = Remain(ing)

Rep = Repeat
RS = Right side
S1l = Slip next stitch knitwise
Ssk = Slip next 2 stitches knitwise one at a time. Pass them back onto left-hand needle, then knit through back loops together.
St(s) = Stitch(es)
WS = Wrong side
Yo = Yarn over



MEASUREMENT

Approx 9" [23 cm] square

GAUGE

20 sts and 26 rows = 4" [10 cm] in stocking st.

INSTRUCTIONS

With B, cast on 24 sts.

****1st row:** (WS). Knit.

2nd and 3rd rows: With A, knit.

4th and 5th rows: With C, knit.

6th and 7th rows: With B, knit.**

8th to 19th rows: As 2nd to 7th rows twice more.

20th row: (RS). With A, knit, inc 3 sts evenly across. 27 sts.

21st row: Knit.

Work Chart to end of chart, reading RS rows from right to left and WS rows from left to right.

1st row: (RS). With B, knit dec 3 sts evenly across. 24 sts.

2nd row: Knit.

3rd and 4th rows: With A, knit.

5th and 6th rows: With C, knit.

7th and 8th rows: With B, knit.

9th to 14th rows: As 3rd to 8th rows.

15th to 18th rows: As 3rd to 6th rows.

19th row: With B, knit.

With B, cast off knitwise (WS).

Side edging: With RS facing and B, pick up and knit 39 sts evenly across side edge.

Rep from ** to ** as given above.

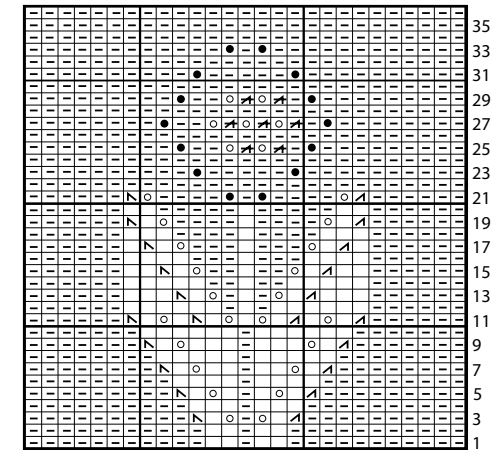
8th to 13th rows: As 2nd to 7th rows.

14th to 17th rows: As 2nd to 5th rows.

18th row: With B, knit.

With B, cast off knitwise (WS).

Rep across opposite side edge.



Start Here

Key

= Knit on RS rows. Purl on WS rows.

= Purl on RS rows. Knit on WS rows.

= K2tog

= ssk

= yo

= MB

= P2tog