



INTERMEDIATE

MEASUREMENTS

Approx 35" x 38" [89 x 96.5 cm].

GAUGE

14 sts and 16 rows = 4" [10 cm] in stocking st with 2 strands of Bernat® Satin™.

MATERIALS

Bernat® Satin™ (3.5 oz/100 g; 200 yds/182 m)

Main Color (MC) Sapphire (04141)

6 balls or 1050 yds/945 m

Bernat® Pipsqueak™ (3.5 oz/100 g; 101 yds/92 m)

Contrast A Whitey White (59005)

2 balls or 200 yds/182 m

Size U.S. 11 (8 mm) circular knitting needle 36" [90 cm] long **or size needed to obtain gauge.** 2 stitch markers.

ABBREVIATIONS: www.yarnspirations.com/abbreviations

Approx = Approximate(ly)

P = Purl

St(s) = Stitch(es)

Beg = Begin(ing)

Rep = Repeat

Tog = Together

K = Knit

RS = Right side

WS = Wrong side

INSTRUCTIONS

Note: When working from chart, wind small balls of the color to be used, one for each separate area in the design.

Start new colors at appropriate points. To change colors, twist the 2 colors around each other where they meet, on the WS, to avoid a hole.

With 2 strands of MC tog, cast on 114 sts.

Do not join. Working back and forth across needle in rows, knit 5 rows (garter st), noting 1st row is WS.

Next row: (RS). Knit.

Next row: K5. Purl to last 5 sts. K5.

Rep last 2 rows twice more.

****Place Chart I: 1st row:** (RS). K20. Knit

1st row of Chart I, reading row from **right to left**. K42. Knit 1st row of Chart I, reading row from **right to left**. K20.

2nd row: K5. P15. Purl 2nd row of Chart I, reading row from **left to right**. P42. Purl 2nd row of Chart I, reading row from **left to right**. P15. K5.

Chart I is now in position.

See Chart I on page 2.

Cont in stocking st, having 5 sts at each end in garter st (knit every row), until 21 rows of Chart I have been worked.

Next row: K5. Purl to last 5 sts. K5.

Next row: Knit.

Rep last 2 rows twice more.***

Next row: K5. Purl to last 5 sts. K5.

Place Chart II: 1st row: (RS). K49. Work 1st row of Chart II. K49.

2nd row: K5. P44. Work 2nd row of Chart II. P44. K5.

Chart II is now in position.

Cont in stocking st, having 5 knit sts in garter st (knit every row), until 21 rows of Chart II have been worked.

Next row: K5. Purl to last 5 sts. K5.

Next row: Knit.

Rep last 2 rows twice more.

Next row: K5. Purl to last 5 sts. K5.**

Work from ** to ** once more, then from ** to ***.

Knit 4 rows. Cast off knitwise (WS).



CHART I

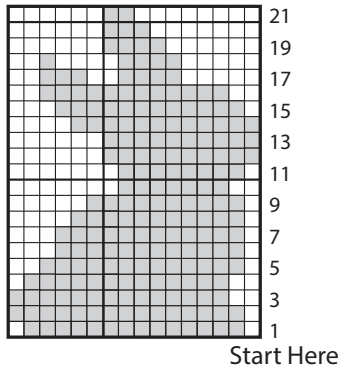
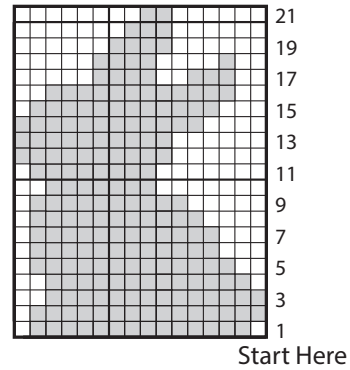


CHART II



- = With MC, knit on RS rows. Purl on WS rows.
- = With A, knit on RS rows. Purl on WS rows.