



MATERIALS

Bernat® Softee Chunky™ (3.5 oz/100 g; 108 yds/99 m)

You will need **Contrast E**.

Size U.S. 11 (8 mm) knitting needles **or size needed to obtain gauge**. Cable needle.

ABBREVIATIONS: www.yarnspirations.com/abbreviations

Alt = Alternate

Approx = Approximately

C4B = Slip next 2 stitches onto cable needle and leave at back of work. K2, then K2 from cable needle.

K = Knit

Pat = Pattern

P = Purl

RS = Right side

Ssk = Slip next 2 stitches knitwise one at a time. Pass them back onto left-hand needle, then knit through back loops together.

St(s) = Stitch(es)

WS = Wrong side

Yo = Yarn over



INTERMEDIATE

Week 2

Eyelet Cable Square (make 4)

MEASUREMENT

Approx 6" [15 cm] square.

GAUGE

11 sts and 14 rows = 4" [10 cm] in stocking st.

INSTRUCTIONS

With E, cast on 16 sts.

1st and alt rows: (WS). K3. P4. K2. P4. K3.

2nd row: K1. P2. K4. P2. K4. P2. K1.

4th row: K1. P2. (C4B. P2) twice. K1.

6th, 8th and 10th rows: K1. P2. (K2. yo. ssk. P2) twice. K1.

12th to 18th rows: As 4th to 10th rows.

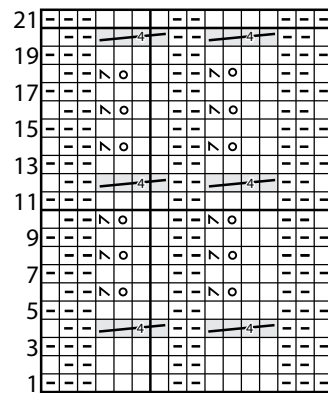
20th row: As 4th row.

21st row: As 1st row.

Cast off in pat (RS).



Eyelet Cable Chart



Start here

Key

- = Knit on RS rows. Purl on WS rows.
- ◻ = Purl on RS rows. Knit on WS rows.
- ◻ = ssk
- ◻ = yo
- ◻ = C4B