



MATERIALS

Bernat® Maker Home Dec™ (8.8 oz/250 g; 317 yds/290 m)
Clay (11008) **8 balls or 2385 yds/2170 m**

Size U.S. L/11 (8 mm) crochet hook **or size needed to obtain gauge.**

ABBREVIATIONS: www.yarnspirations.com/abbreviations

Alt = Alternate
Approx = Approximate(ly)
Beg = Begin(ning)
Ch = Chain(s)
Cont = Continue(ity)
Dc = Double crochet
Dcfp = Yoh and draw up a loop around post of indicated stitch, inserting hook from front to back to front. (Yoh and draw through 2 loops on hook) twice
Pat = Pattern
Rep = Repeat

RS = Right side
Sc = Single crochet
Sp(s) = Space(s)
St(s) = Stitch(es)
Tog = Together
Tr = Treble crochet
Trfp = (Yoh) twice and draw up a loop around post of indicated stitch, inserting hook from front to back to front. (Yoh and draw through 2 loops on hook) 3 times.
WS = Wrong side
Yoh = Yarn over hook



MEASUREMENTS

Approx 44" [112 cm] wide x 57" [145 cm] long.

GAUGE

10 sc and 11 rows = 4" [10 cm].

INSTRUCTIONS

Cable Panel Pat (worked over 16 sts). See chart on page 3.

1st row: (RS). 1 sc in each of next 2 sc. (1 dcfp around post of next st 2 rows below) twice. 1 sc in each of next 2 sc. Skip next 2 sts.

(1 trfp around post of next st 2 rows below) twice. *Working behind 2 trfp just made*, 1 trfp around post of each of 2 skipped sts 2 rows below. 1 sc in each of next 2 sc. (1 dcfp around post of next st 2 rows below) twice. 1 sc in each of next 2 sc.

2nd and alt rows: 1 sc in each of next 16 sts.

3rd row: 1 sc in each of next 2 sc. (1 dcfp around post of next st 2 rows below) twice. 1 sc in each of next 2 sc. (1 dcfp around post of next st 2 rows below) 4 times.



BERNAT® CROCHET CABLEWORK BLANKET | CROCHET

1 sc in each of next 2 sc. (1 dcfp around post of next st 2 rows below) twice. 1 sc in each of next 2 sc.

5th row: As 1st row.

7th row: 1 sc in each of next 3 sc. (1 trfp around post of next dcfp 2 rows below) twice. (1 trfp around post of next trfp 2 rows below) twice. 1 sc in each of next 2 sc. (1 trfp around post of next trfp 2 rows below) twice. (1 trfp around post of next dcfp 2 rows below) twice. 1 sc in each of next 3 sc.

9th row: 1 sc in each of next 3 sc. Skip next 2 sts. (1 trfp around post of next trfp 2 rows below) twice. *Working behind 2 trfp just made*, 1 trfp around post of each of 2 skipped sts 2 rows below. 1 sc in each of next 2 sc. Skip next 2 sts. (1 trfp around post of next trfp 2 rows below) twice. *Working in front of 2 trfp just made*, 1 trfp around post of each of 2 skipped sts 2 rows below. 1 sc in each of next 3 sc.

11th row: 1 sc in each of next 2 sc. (1 trfp around post of next trfp 2 rows below) twice. 1 sc in each of next 2 sc. (1 trfp around post of next trfp 2 rows below) 4 times.

1 sc in each of next 2 sc. (1 trfp around post of next trfp 2 rows below) twice. 1 sc in each of next 2 sc.

13th row: As 3rd row.

14th row: As 2nd row.

These 14 rows form Cable Panel Pat.

BLANKET

Ch 120. See chart on page 3.

Set up row 1: (WS). 1 dc in 4th ch from hook (counts as 2 dc). 1 dc in each ch to end of chain. Turn. 118 dc.

Set up row 2: Ch 1. 1 sc in first dc. (1 dcfp around post of next dc) twice. 1 sc in each of next 3 dc. Ch 1. Skip next dc. *1 sc in each of next 4 dc. (1 dcfp around post of next dc) twice. 1 sc in each of next 2 dc. (1 dcfp around post of next dc) 4 times. 1 sc in each of next 2 dc. (1 dcfp around post of next dc) twice. 1 sc in each of next 4 dc. Ch 1. Skip next dc. Rep from * 4 times more. 1 sc in each of next 3 dc. (1 dcfp around post of next dc) twice. 1 sc in last dc. Turn.

Set up row 3: Ch 1. 1 sc in each st and ch-1 sp to end of row. Turn.

Proceed in pat as follows:

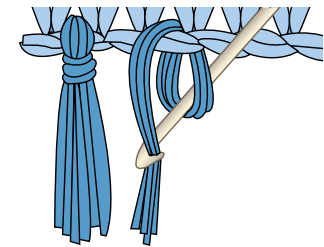
1st row: (RS). Ch 1. 1 sc in first sc. (1 dcfp around post of next dcfp 2 rows below) twice. 1 sc in next sc. **Working in front of row*, 1 tr in next skipped sc 2 rows below. Skip next sc (behind tr). 1 sc in next sc. Ch 1. Skip next sc. 1 sc in next sc. *Working in front of row*, 1 tr in same skipped sc 2 rows below as last tr. Skip next sc (behind tr).** Work 1st row of Cable Panel Pat across next 16 sc. Rep from * 4 times more, then from * to ** once. 1 sc in next sc. (1 dcfp around post of next dcfp 2 rows below) twice. 1 sc in last sc. Turn.

2nd row: Ch 1. 1 sc in each st and ch-1 sp to end of row. Turn. These 2 rows form V Texture pat. Cable Panel Pat is now in position.

Cont in pat (as placed in last rows) until Blanket measures approx 56½" [143.5 cm], ending on a 1st row of Cable Panel Pat.

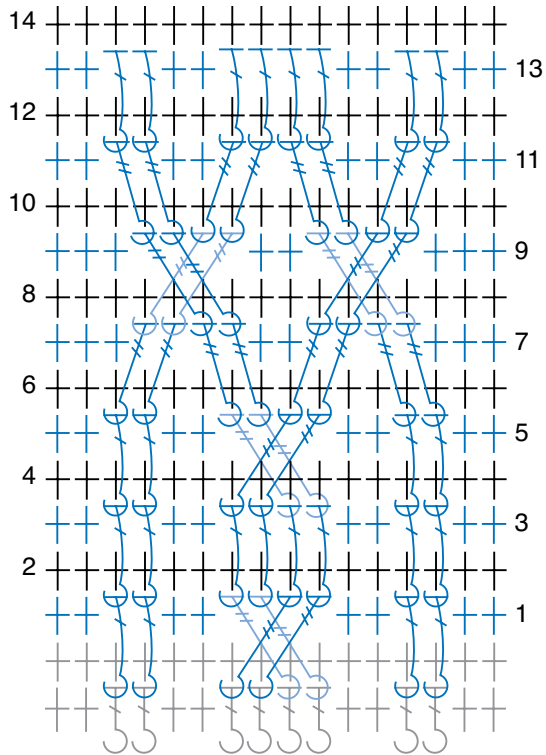
Last row: (WS). Ch 3 (counts as dc). 1 dc in each st or ch-1 sp to end of row. Fasten off.

Fringe: Cut lengths of yarn 18" [45.5 cm] long. Taking 3 strands tog, knot into fringe evenly across each end of Blanket. Trim fringe evenly.

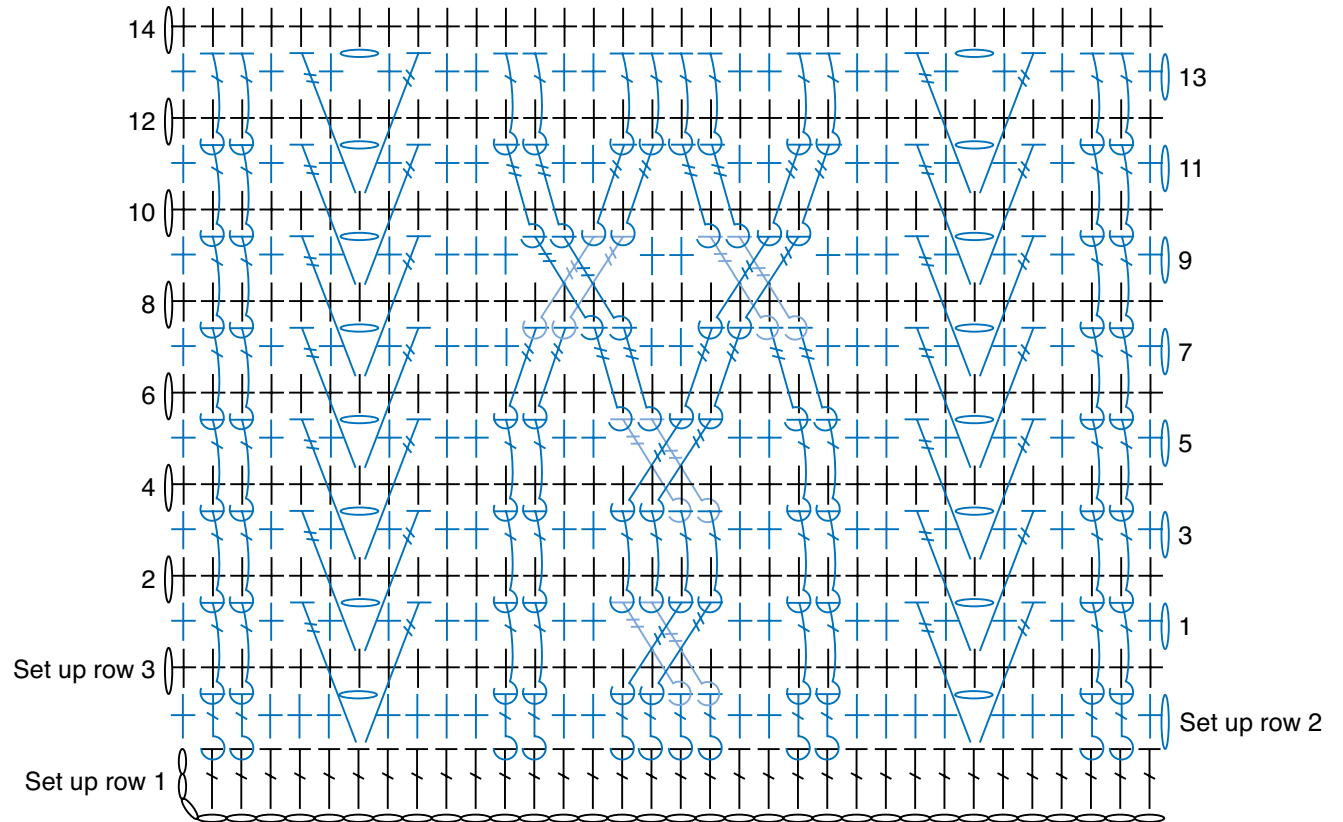




BERNAT CROCHET CABLEWORK BLANKET | CROCHET



CABLE PANEL PATTERN



REDUCED SAMPLE OF BLANKET PATTERN

STITCH KEY

- = chain (ch)
- = single crochet (sc)
- = double crochet (dc)
- = treble crochet (tr)
- = front post double crochet (dcfp)
- = front post treble crochet (trfp)