

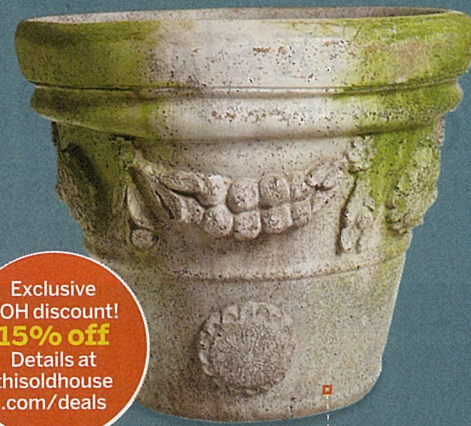
**graceful scrolls**

SOUTHERN PATIO

Size: 16"W x 16"H

Made of: Fiberglass, resin, and limestone powder

Try it: With an all-white planting scheme to flatter its rich burnished finish. \$72 for 2; acehardware.com



Exclusive
TOH discount!
15% off
Details at
thisoldhouse
.com/deals

draped in garland

UNITED HOUSE WRECKING

Size: 18"W x 16"H

Made of: Fiberglass, stone, and sand
Try it: By the front steps so that you can see its fine details; add seasonal blooms for a year-round warm welcome. \$170; unitedhousewrecking.com

**formal flair**

CHARLESTON GARDENS

Size: 22"W x 15 1/4"H

Made of: Fiberglass, stone, and sand

Try it: Near a seating area, filled with fragrant jasmine trailing down the sides. \$145; charlestongardens.com

**tall trophy**

FRONTGATE

Size: 22"W x 29 1/4"H

Made of: Fiberglass, resin, and limestone

Try it: As the show-piece in a grouping; then play up its dramatic stature with a spiky tropical plant. \$225; frontgate.com

**cup and saucer**

PEBA TRADING & MANUFACTURING CORP.

Size: 22 3/4"W x 21 1/4"H

Made of: Stone, resin, styrene, and fiberglass

Try it: Planted with sun-loving geraniums on a deck, where its matching saucer will keep boards dry by catching excess moisture. \$100; homedepot.com

acanthus accent

ELEMENTS OF HOME

Size: 19"W x 17"H

Made of: Fiberglass, stone, and sand

Try it: Overflowing with chartreuse or purple sweet-potato vine to play up its leafy relief. \$96; elementsofhome.com



Exclusive
TOH discount!
15% off
Details at
thisoldhouse
.com/deals

**gray goblet**

CRESCENT GARDEN

Size: 16 1/4"W x 16 1/4"H

Made of: Resin

Try it: On a stone wall, where its fade-resistant gray color will blend in; then fill it with drapery red or purple verbena for a hint of bold color. \$125; gardenartisans.us

**distressed to perfection**

PEBA TRADING & MANUFACTURING CORP.

Size: 22"W x 30"H

Made of: Stone, resin, styrene, and fiberglass

Try it: As one of a pair framing the front door, planted with trim evergreen shrubs that won't hide its egg-and-dart rim and faux crack. \$90; homedepot.com

**sculptural frieze**

CHARLESTON GARDENS

Size: 12 1/2"W x 37"L x 12 1/2"H

Made of: Fiberglass, stone, and sand

Try it: Planted with delicate sweet alyssum so as not to compete with its playful cherub design. \$295; charlestongardens.com

strap accents

KENROY HOME

Size: 21"W x 15"H

Made of: Painted magnesium oxide, a lightweight, waterproof alternative to gypsum plaster

Try it: Planted with silvery dusty miller for a dramatic foliage display. \$104; bellacor.com

**PLANTING TIPS**

There's more to container gardening than picking a pot that looks good. For the best result, keep these guidelines in mind.

Drainage Proper drainage prevents a plant's roots from rotting, so be sure any pot you're planting has a drainage hole in the bottom. Cover the hole with large pebbles or a small piece of screening to contain soil.

Soil Go for a sterile, lightweight potting mix rather than heavy, from-the-garden soil. If you're using a fiberglass or resin urn that has a tall pedestal base in a high-traffic area, you might want to fill the bottom half with pebbles to prevent it from being toppled.

Plantings For eye-catching containers, try the "thrillers, fillers, and spillers" rule: Place towering species in the center or back as visual anchors; use full, medium-size plants to fill out around them; and let draping varieties soften a pot's edges with their cascading form. Don't overcrowd the plants—three to five in a big pot gives roots plenty of space to grow. ■

we'll help you find it

Tell us what you're shopping for and we might feature your idea in our upcoming reader-created issue. Post suggestions to thisoldhouse.com/bonus