

# RESISTAT WARD 6

MAYOR JOE CURTATONE

WARD 6 COUNCILOR LANCE DAVIS

SPRING 2019

WARD 6 COUNCILOR,  
LANCE DAVIS

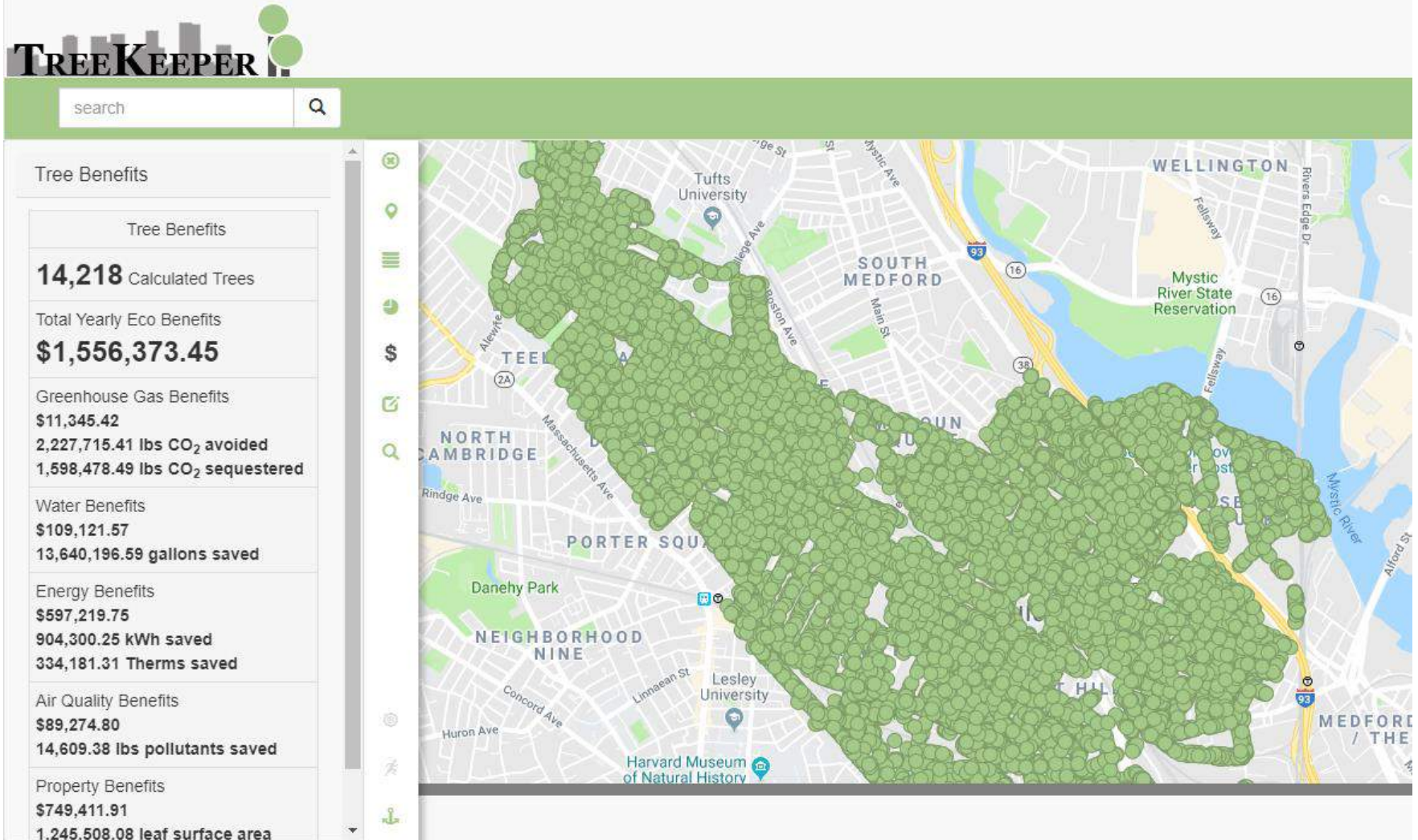
**WELCOME**

TAYLOR KO

RESISTAT COORDINATOR

# QUICK UPDATES

# OUR URBAN FOREST



# NEW SOMERVISION PROCESS LAUNCHED



## SOMERVISION2040

Sustainability • Diversity • Opportunity • Connectivity • Community

**[somervision2040.com](https://somervision2040.com)**

# 2019 POTHOLE BLITZ





# WEST BRANCH LIBRARY



**See more at:**

- [somerillepubliclibrary.org](http://somerillepubliclibrary.org)
- [somerillema.gov/westbranchlibrary](http://somerillema.gov/westbranchlibrary)

# GLX CONSTRUCTION AND BRIDGE CLOSURES



- **GLX is on schedule**
  - Service is expected to begin at the end of 2021
  - Contact info:
    - 24/7 GLX hotline at 1-855-GLX-INFO (459-4636)
    - info@glxinfo.com
- **Broadway Bridge in Ball Square**
  - Expected to re-open around March 2020
  - Community path
    - Expected closure from mid-May to mid-June
- **Other road closures and detours**
  - Medford St. Bridge is scheduled to close May 17
  - Washington St. Underpass closed through Nov. 2019



**CITY IS PROVIDING A FREE PUBLIC SHUTTLE SERVICE  
7 A.M. TO 7 P.M., MON-FRI**



***Bridge Hopper***

**CITY OF SOMERVILLE**

---

**[somerillema.gov/glx](https://somerillema.gov/glx)**

# STAY INFORMED



- **City of Somerville Construction Newsletter**
  - [somervillema.gov/constructionnewsletter](https://somervillema.gov/constructionnewsletter)
- **MassDOT GLX Updates**
  - [mass.gov/glx](https://mass.gov/glx)
- **City Alerts**
  - [somervillema.gov/alerts](https://somervillema.gov/alerts)
- **City Newsletter**
  - [somervillema.gov/enews](https://somervillema.gov/enews)

# LOYAL 2 LOCAL

- **Support your local businesses through construction**
  - Ball Square
  - Magoun Square
  - Union Square
- **Ways to help**
  - Think of local options
  - Spread the word
    - #loyal2local



# UNITED LEGAL DEFENSE FUND FOR IMMIGRANTS

**#STANDWITH  
IMMIGRANTS  
CAMBRIDGE + SOMERVILLE**



cambridgecf.org

**To donate, please visit:  
[bit.ly/UnitedDefenseFund](https://bit.ly/UnitedDefenseFund)**

# BROWN SCHOOL YARD & WEST SOMERVILLE NEIGHBORHOOD SCHOOL YARD





HALEEMAH QURESHI

PROJECT MANAGER, ENGINEERING

# DAVIS SQUARE STREETSCAPE

Location 6: College Avenue Crossing II (Middlesex Federal Savings)

QTY	DESCRIPTION TASK
2	A AAB Compliant Pedestrian Ramp
1	B Crosswalk Replacement
1	C Spot Brick Repair



FIGURE 6: COLLEGE AVENUE CROSSING II (FACING WEST)

Location 7: Highland Avenue Crossing

QTY	DESCRIPTION TASK
2	A AAB Compliant Pedestrian Ramp
1	B Crosswalk Replacement



FIGURE 7: HIGHLAND AVENUE CROSSING (FACING SOUTHWEST)

Location 13: Driveway Crossing at Tsurumen Ramen and Davis Square Nails

QTY	DESCRIPTION TASK
1	A AAB Compliant Pedestrian Ramp
1	B Crosswalk Replacement



FIGURE 13: DRIVEWAY CROSSING AT TSURUMEN RAMEN (FACING SOUTHWEST)

Location 8: Mike's Food & Spirits Crossing

QTY	DESCRIPTION TASK
1	A AAB Compliant Pedestrian Ramp
1	B Crosswalk Replacement



FIGURE 8: CROSSING AT MIKE'S (FACING WEST)

Location 16: Grove Street

QTY	DESCRIPTION TASK
1	L15 Replace sidewalks and driveway aprons



FIGURE 16.1: NORTH SIDEWALK AT GROVE STREET (FACING WEST)



FIGURE 16.2: SOUTH SIDEWALK AT GROVE STREET (FACING EAST)

Location 11: Mike's Food & Spirits Sidewalk

QTY	DESCRIPTION TASK
1	C Spot Brick Repair



FIGURE 11: SIDEWALK AT MIKE'S (FACING EAST)

Location 12: Sidewalk from Oath Pizza to Chipotle

QTY	DESCRIPTION TASK
2	C Spot Brick Repair



FIGURE 12.1: TREE PIT AT CHIPOTLE (FACING EAST)



FIGURE 12.2: TREE PIT AT OATH PIZZA (FACING NORTH)

Location 14: Crossings at Elm Street and Chester Street

QTY	DESCRIPTION TASK
6	A AAB Compliant Pedestrian Ramp
3	B Crosswalk Replacement



FIGURE 14: CROSSINGS AT ELM STREET AND CHESTER STREET (FACING NORTH)

Location 15: Crossings at Elm Street, Bowers Avenue and Grove Street

QTY	DESCRIPTION TASK
4	A AAB Compliant Pedestrian Ramp
2	B Crosswalk Replacement
1	L15 Raised crossing across Elm Street



FIGURE 15.1: CROSSING AT BOWERS AVENUE (FACING NORTH)

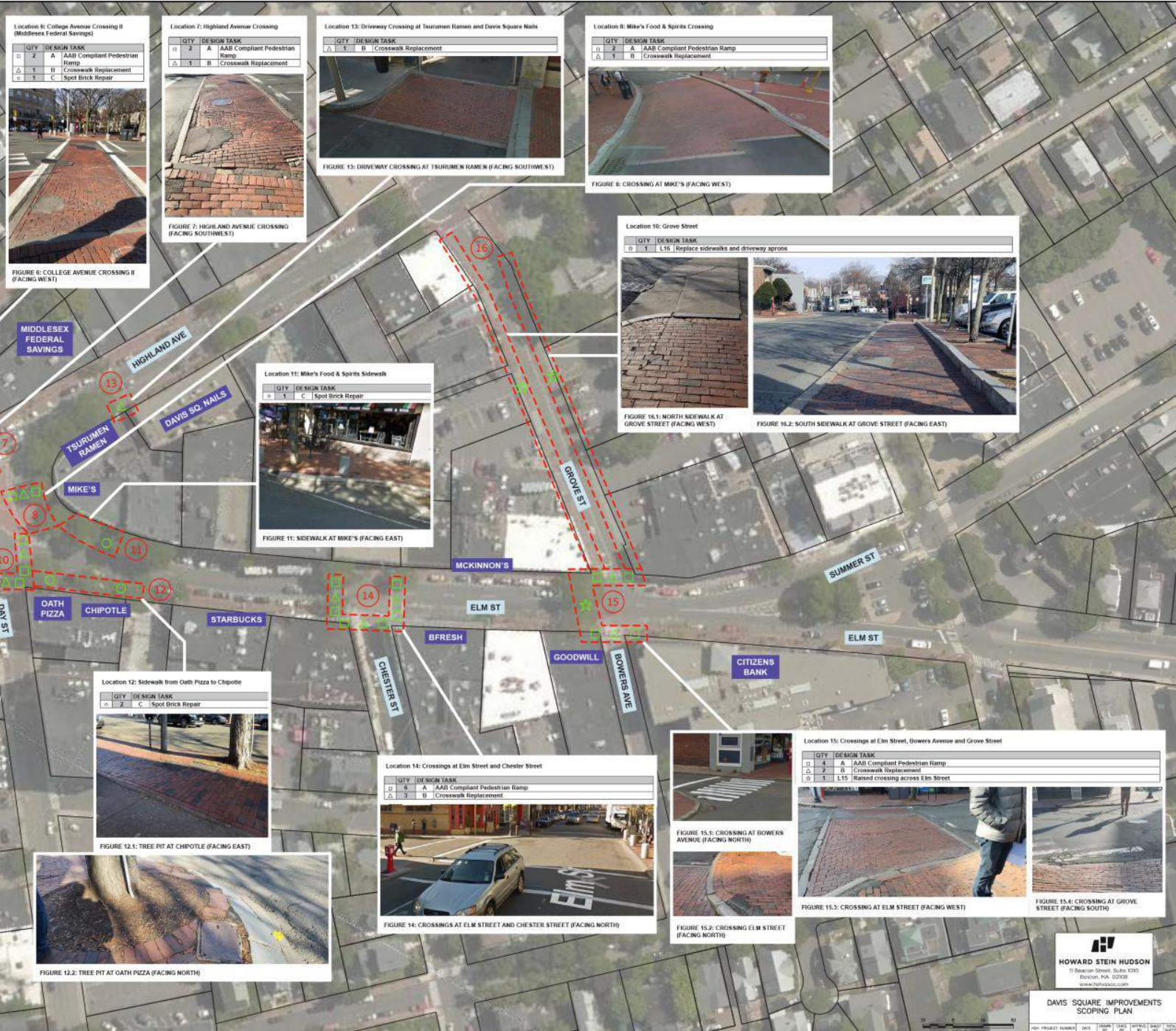
FIGURE 15.2: CROSSING ELM STREET (FACING NORTH)



FIGURE 15.3: CROSSING AT ELM STREET (FACING WEST)



FIGURE 15.6: CROSSING AT GROVE STREET (FACING SOUTH)





Location 3: Statue Park

QTY	DESIGN TASK
0	5
C	Spot Brick Repair



FIGURE 3.1: STATUE PARK (FACING EAST)



FIGURE 3.2: TREE PIT IN SEMI-CIRCLE (FACING NORTH)



FIGURE 3.3: STATUE PARK (FACING SOUTH)

Location 5: College Avenue Crossing 1 (East MBTA Station)

QTY	DESIGN TASK
0	2
A	AAB Compliant Pedestrian Ramp
Δ	1
B	Crosswalk Replacement



FIGURE 5: COLLEGE AVENUE CROSSING (FACING NORTH)

Location 4: East MBTA Station

QTY	DESIGN TASK
0	1
C	Spot Brick Repair
0	1
L4	Raised crossing at Foster's and MBTA



FIGURE 4.1: RAMP AT FOSTER'S DRIVEWAY (FACING SOUTH)



FIGURE 4.2: DRIVEWAY AT FOSTER'S (FACING EAST)

Total Quantities

QTY	DESIGN TASK
1	28
A	AAB Compliant Pedestrian Ramp
Δ	14
B	Crosswalk Replacement
0	11
C	Spot Brick Repair
0	1
L2	Detectable Warning Panel Replacements
0	1
L4	Raised crossing at Foster's and MBTA
0	1
L15	Raised crossing across Elm Street
0	2
L16	Replace sidewalks and driveway aprons on Grove Street

SCOPE SUMMARY

General Design Tasks

- A - AAB Compliant Pedestrian Ramp**
  - Bring all pedestrian ramps into AAB compliance or identify required variances where compliance is not possible.
- B - Crosswalk Replacement**
  - Brick crosswalks are to be replaced with asphalt and painted red with white thermoplastic ladders.
  - Remove and save granite curbing for reuse.
- C - Spot Brick Repair**
  - City of Somerville to gather and share information on subsidence from test locations.
  - HS4 will oversee repairs in order to provide information on future design.

Location Specific Design Tasks

- L2 - Detectable Warning Panel Replacements**
  - Replace detectable warning panels on Statue Park side of crossing at raised crossing from MBTA station to Statue Park.
  - Replace brick with cement concrete between limits of existing granite bollards and set detectable warning panel in concrete.
- L4 - Raised Driveway at Foster's**
  - Provide raised driveway crossing and drainage mitigation for the new low point created.
- L15 - Raised crossing across Elm Street**
  - Provide a raised crossing across Elm Street, between Goodwell and Insign Pizza.
  - Replace brick crosswalk with asphalt, painted red with granite ladders.
- L16 - Replace sidewalks and driveway aprons**
  - Fix sidewalks and driveway aprons along both sides of Grove Street.
  - Set curbs and aprons to what road should be.
  - Remove and reuse to match curb as possible.
  - Maintain a relatively flat, AAB compliant, sidewalk at the back of curb, with a ramped apron.
  - May include reconstruction of sloped granite or D-stones at transitions.
  - All brick to be replaced with concrete.
  - Include contingency for pavement areas incase additional work is needed beyond the curb line.

Location 2: Raised crossing at MBTA West and Statue Park

QTY	DESIGN TASK
0	3
L2	Detectable Warning Panel Replacements



FIGURE 2: RAISED CROSSING AT MBTA WEST & STATUE PARK (FACING NORTH)

Location 9: Crossings at Elm Street and Dover Street

QTY	DESIGN TASK
0	4
A	AAB Compliant Pedestrian Ramp
Δ	2
B	Crosswalk Replacement
0	1
A	Spot Brick Repair



FIGURE 9.1: DOVER STREET CROSSING (FACING NORTH)



FIGURE 9.2: ELM STREET CROSSING (FACING EAST)

Location 1: Meacham Road and Buena Vista Road Crossing

QTY	DESIGN TASK
0	2
A	AAB Compliant Pedestrian Ramp



FIGURE 1: EAST RAMP AT BUENA VISTA ROAD AND MEACHAM ROAD (FACING NORTH)

Location 10: Crossings at Elm Street and Day Street

QTY	DESIGN TASK
0	4
A	AAB Compliant Pedestrian Ramp
Δ	2
B	Crosswalk Replacement



FIGURE 10.1: CROSSINGS AT DAY STREET AND ELM STREET (FACING SOUTH)



# **MAYOR JOE CURTATONE**

**ALL THE THINGS NO ONE WANTS TO THINK ABOUT:  
AKA LONG-RANGE PLANNING**



America's Infrastructure Scores a

D+



20

**Why do  
people/governments/etc.  
put things off?**

# There are many barriers to long-range government efforts

- Cost
- Time
- Need for a better understanding of the issue
- More immediate needs
- They're difficult
- To avoid discomfort
- Lack of consensus
- Tunnel vision

# **But frankly...**

**The nature of politics and government leads many to avoid costly long-range needs in favor of current needs and quick wins**

# **Somerville is working to flip that model**

**We are striving to meet today's goals and needs while ALSO tackling a range of complex and long-term issues facing the city**



# PLANNING FOR TODAY...AND TOMORROW

Jobs

Housing

Revenue

Buildings

Trees

Water &  
Sewer

Mobility

Climate Change

**AND MUCH  
MORE...**



**SOMERVISION2040**

Sustainability • Diversity • Opportunity • Connectivity • Community

**CONSIDER A FEW  
EXAMPLES...**

# **JOB CREATION & WORKFORCE SUPPORTS**

## **TODAY**

- **Workforce development**
- **Education investments**
- **Small business supports**
- **Large business recruitment**
- **Green tech, innovation, and startup supports**
- **Artist and maker supports**
- **Living wage**
- **Etc.**

# JOB CREATION & WORKFORCE SUPPORTS

## LONG-TERM

### Strategic community development:

- SomerVision: 30,000 new jobs by 2030
- Neighborhood plans including job strategy

### Proposed Zoning Overhaul:

- To foster startups, makers and artists, biotech, small independent businesses, and larger businesses

### Jobs Linkage: ~\$3M in near-term

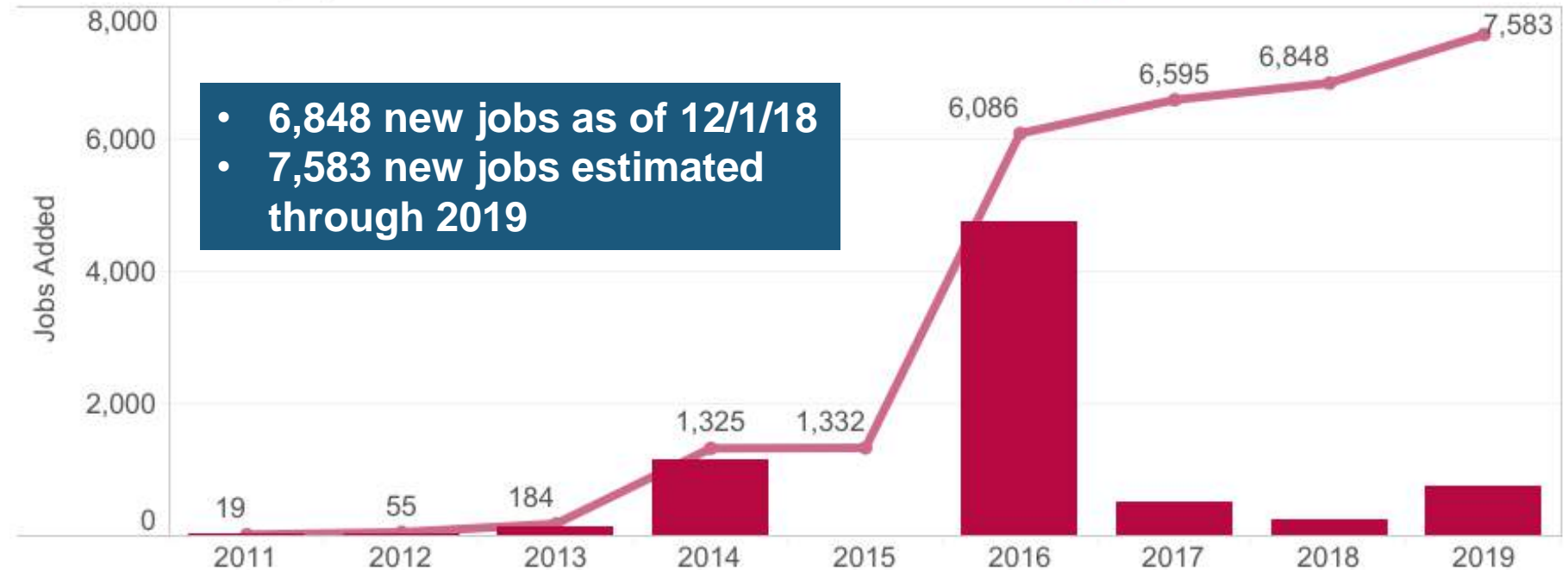
- Somerville Talent Equity Playbook
- Jobs Creation and Retention Trust

# WE ARE ALREADY SEEING THE RESULTS: NEW JOBS

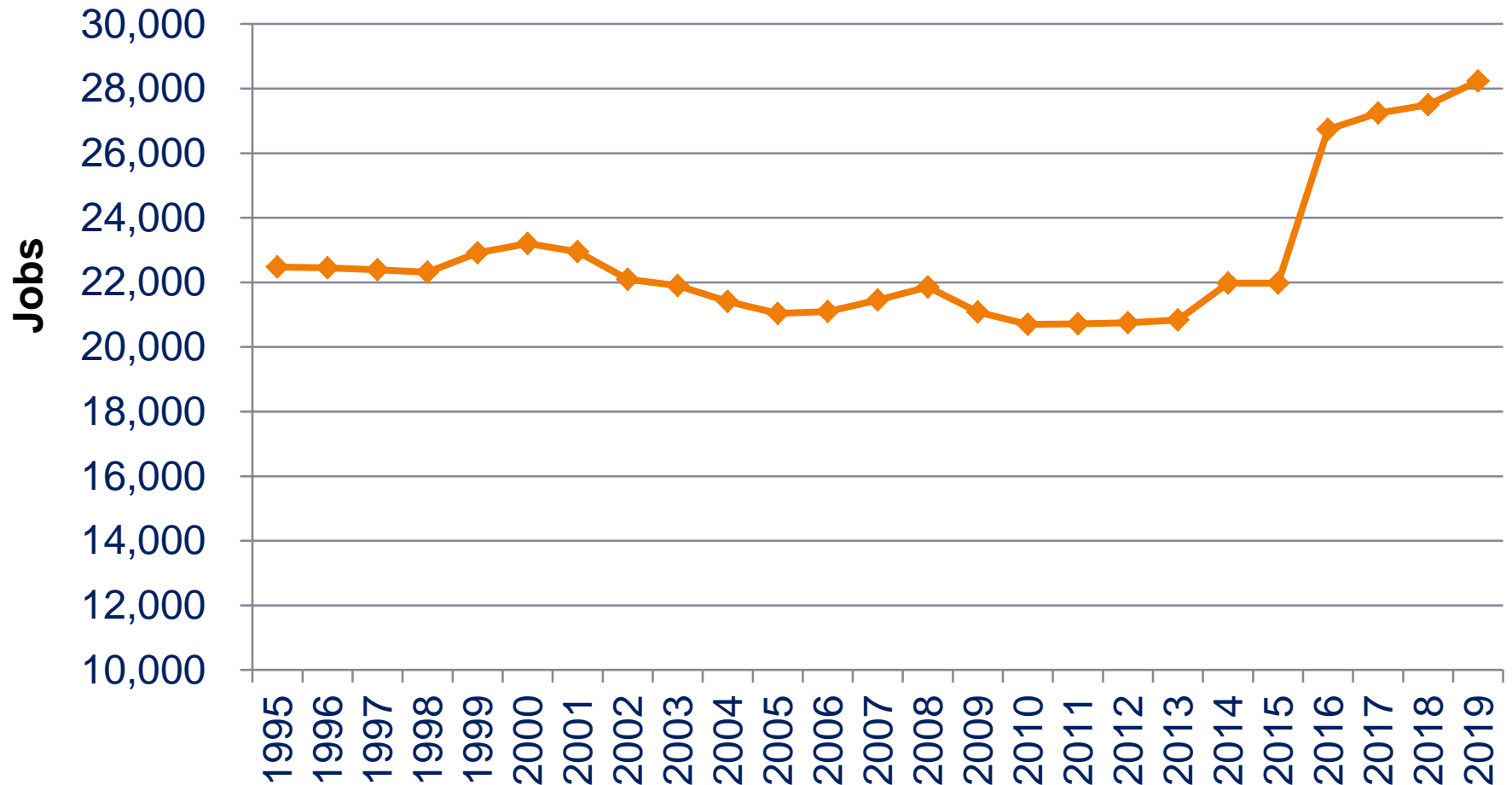
## New jobs created in Somerville

As of 12/1/2018 with projections for 2019

Jobs Added in Total  
Jobs Added in Year



# **JOBS IN SOMERVILLE: FROM NEARLY FLAT LINING TO GROWTH**



# **WATER SYSTEM: 340 YEARS TO UPGRADE AT CURRENT PACE**

## **PREVIOUS**

- **Virtually no proactive line & main replacement prior to 2006**
- **Extensive emergency repairs only**

## **TODAY**

- **Water System Improvement Plan (WSIP): \$1.5M / year**
- **Established new 16-year WSIP (now four years in)**
- **Relining, replacement of mains and lines**
- **Lead service replacement \$0.75M / year**

# WATER SYSTEM: 102 YEARS TO COMPLETE

## Long-term

Increase proactive updates and repairs: \$5M / year

- Maintain water quality and fire fighting flow
- Repair and update decrepit valves, mains, and lines

Revise Water System Investment Plan

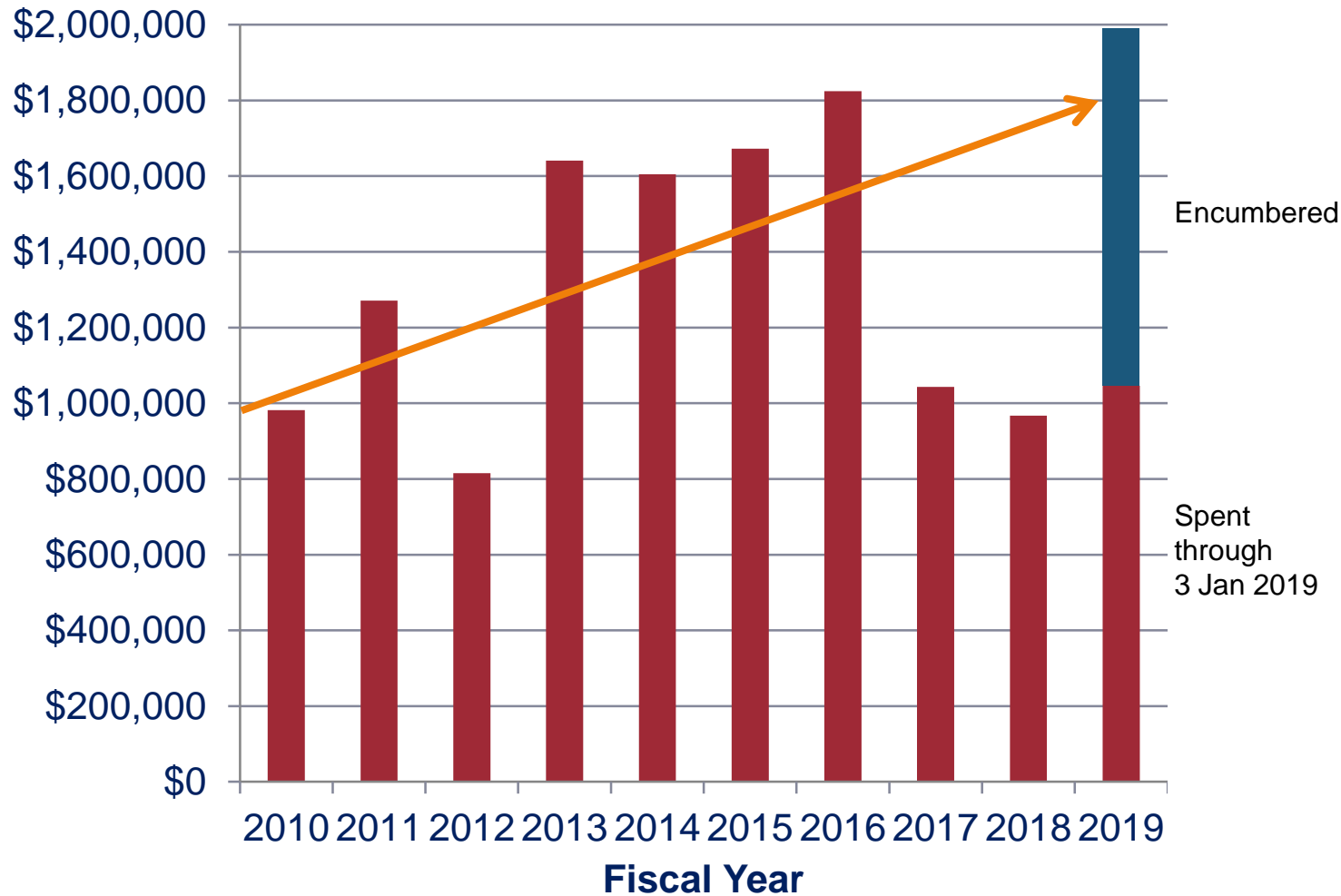
- Collect new flow test data, update hydraulic model, include future demands, complete risk-based prioritization

Escalate Lead Service Replacement at 4% per year

- Estimated 8 years to replace known lead pipes, 60 years replace all non-copper pipes



# WATER SYSTEM EMERGENCY REPAIR SPENDING



## FY-2017/18

- Gap in contract

## CY-2018

- 27 pipes repaired
- 28 valves replaced

# **HOUSING CREATION & SUPPORTS**

- **20% Inclusionary**
- **Affordable Housing Trust Fund**
- **Community Preservation Act**
- **Housing Linkage**
- **100 Homes**
- **Office of Housing Stability**
- **Tenant and housing supports**
- **Updated Condo Conversion Ordinance**
- **Short-term rental ordinance**
- **Regional collaboration on housing production**
- **And more**

# HOUSING CREATION & SUPPORTS

## Long-term

### Proposed zoning overhaul:

- To support diverse and affordable housing creation

### Bold initiatives

- Community Land Trust, Transfer fee, Rent stabilization, etc.

### 6,000 new housing units locally by 2030 (and more?)

- SomerVision update discussion

### 185,000 new housing units regionally

- Metro Mayors Coalition Housing Task Force commitment

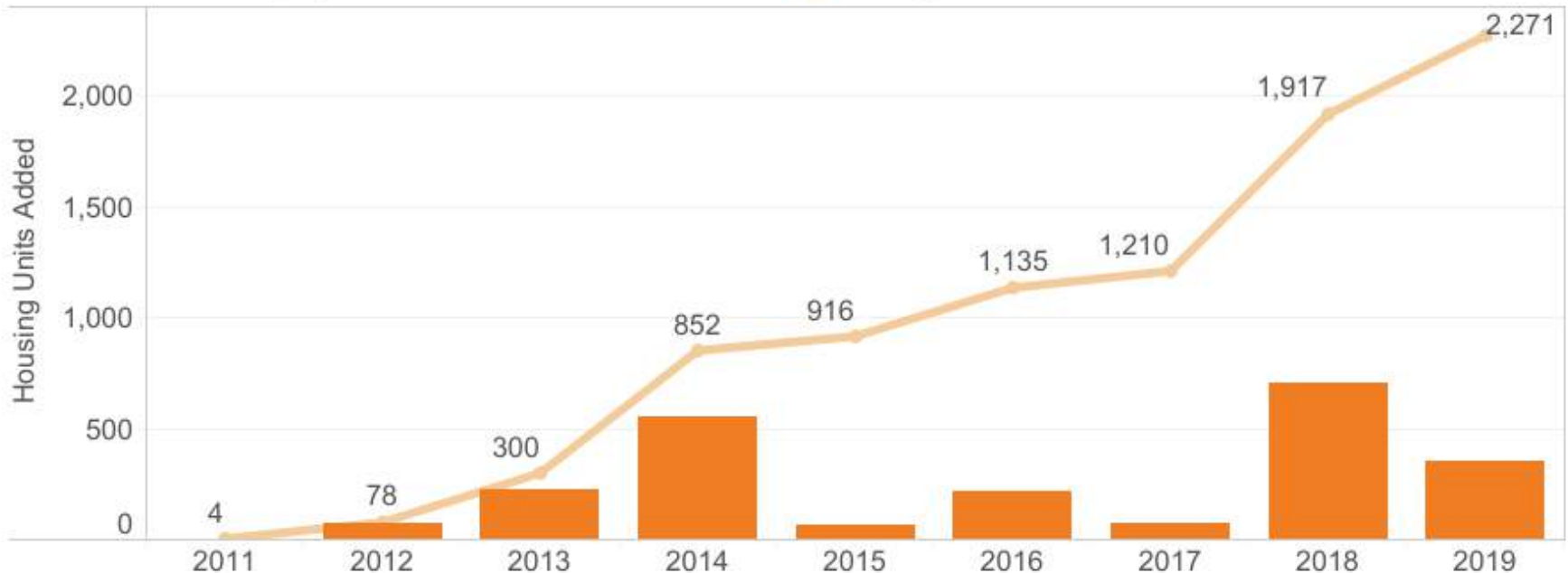
# WE ARE SEEING THE RESULTS: BUT THE NEED IS GREATER

**Our city has added more than three times as many affordable units in just the past six years than we did in the previous 20. But we must step up the pace.**

## Housing Units Created

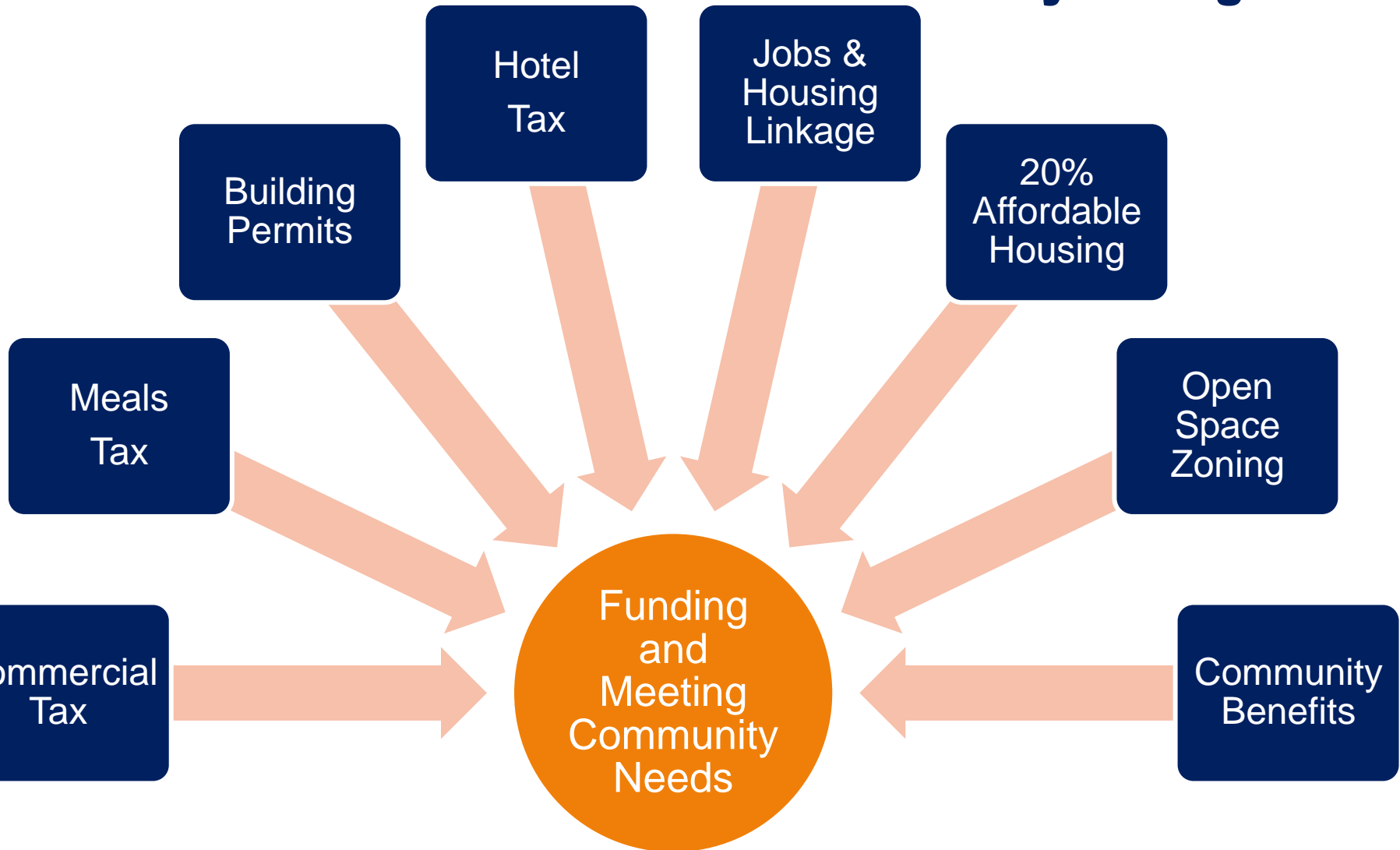
As of 12/1/2018 with projections for 2019

- Housing Units Added in Total
- Housing Units Added in Year

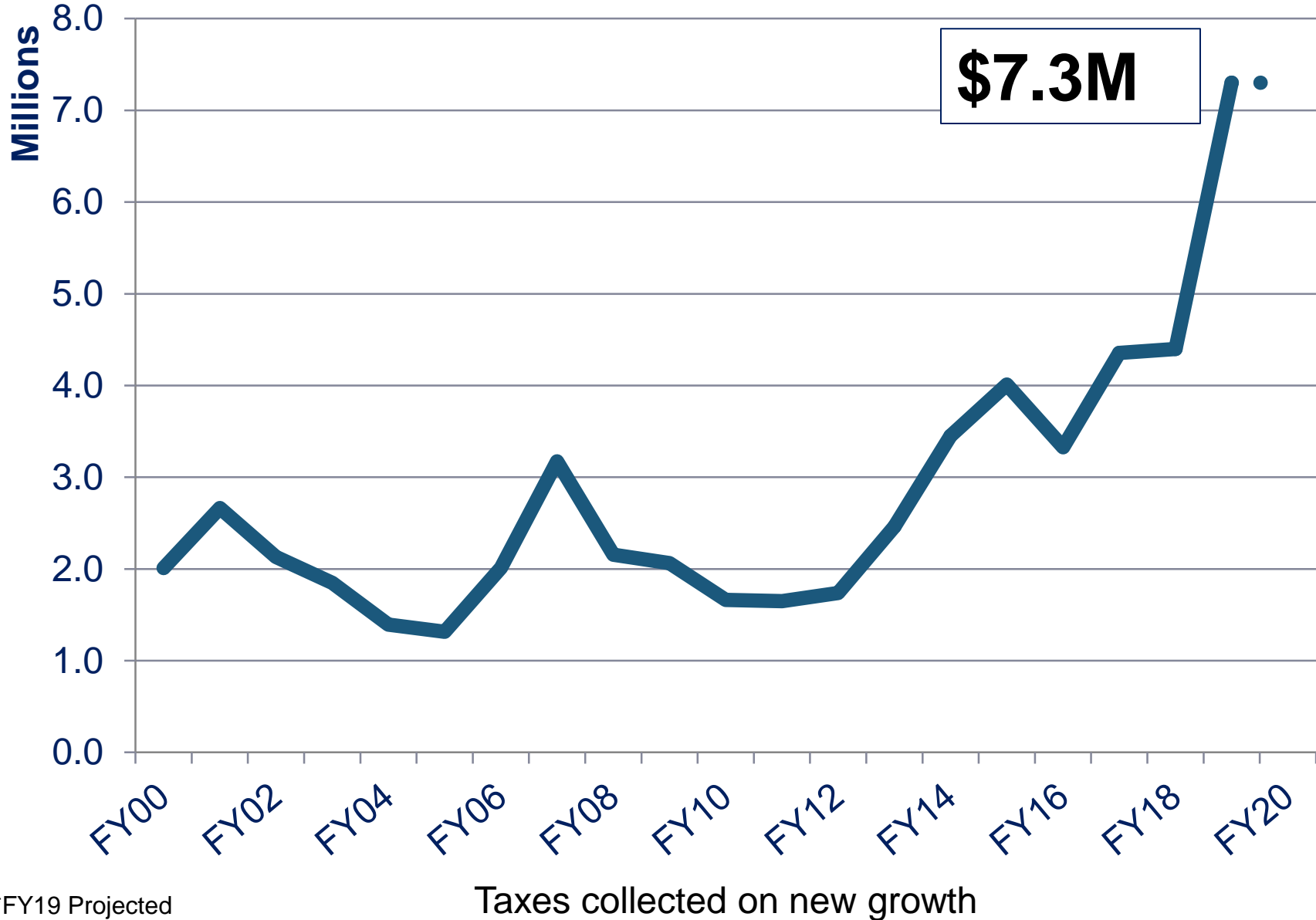


# SPURRING COMMERCIAL DEVELOPMENT TO MEET GROWING NEEDS

**Today & Long-term**



# TAX REVENUES BOOSTED BY NEW GROWTH



**\$7.3M**

\*FY19 Projected

# GROWING COMMERCIAL TAXES TO REDUCE SIZE OF RESIDENTIAL TAX INCREASES

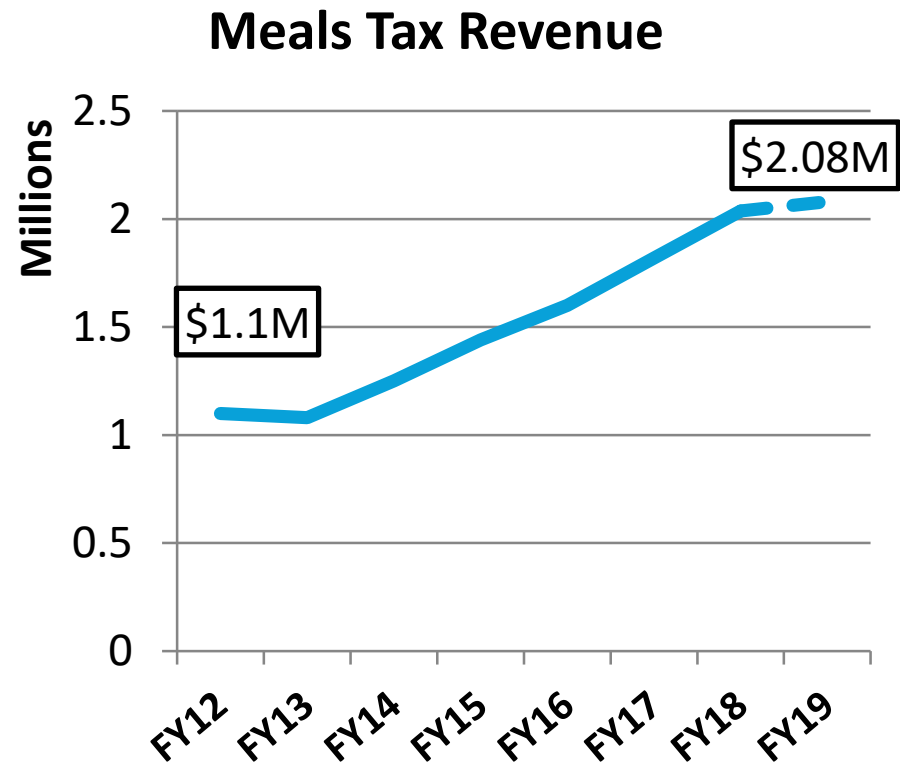
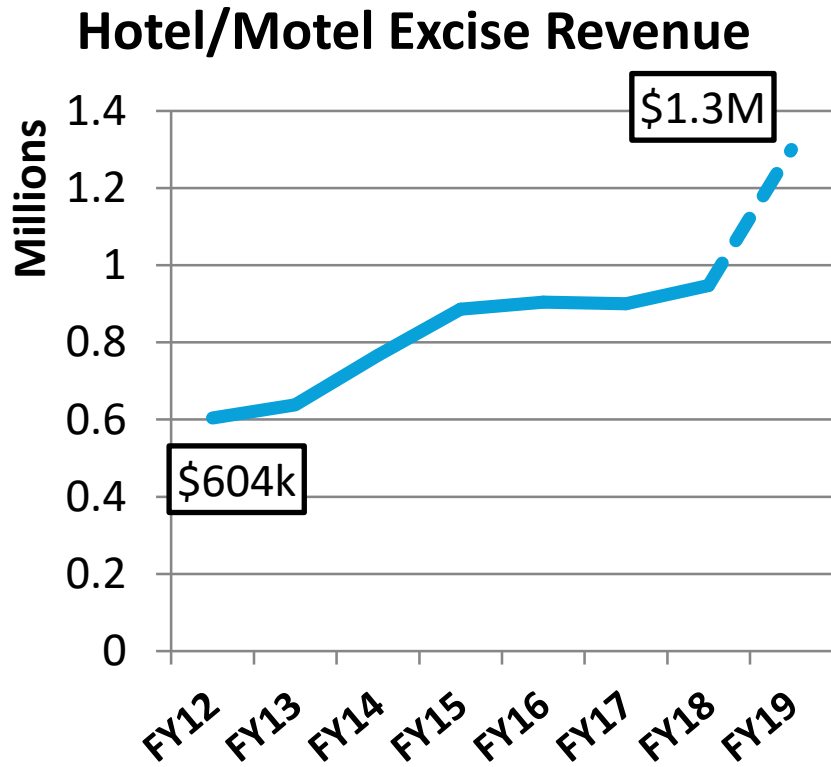
## 1.3 Buildings

- Estimated ~\$750 million in value at full buildout
- ~\$13 million in new growth over ~next 4 years
- After that, ~\$13 million in new commercial and personal property taxes annually

### Cambridge Crossing at North Point

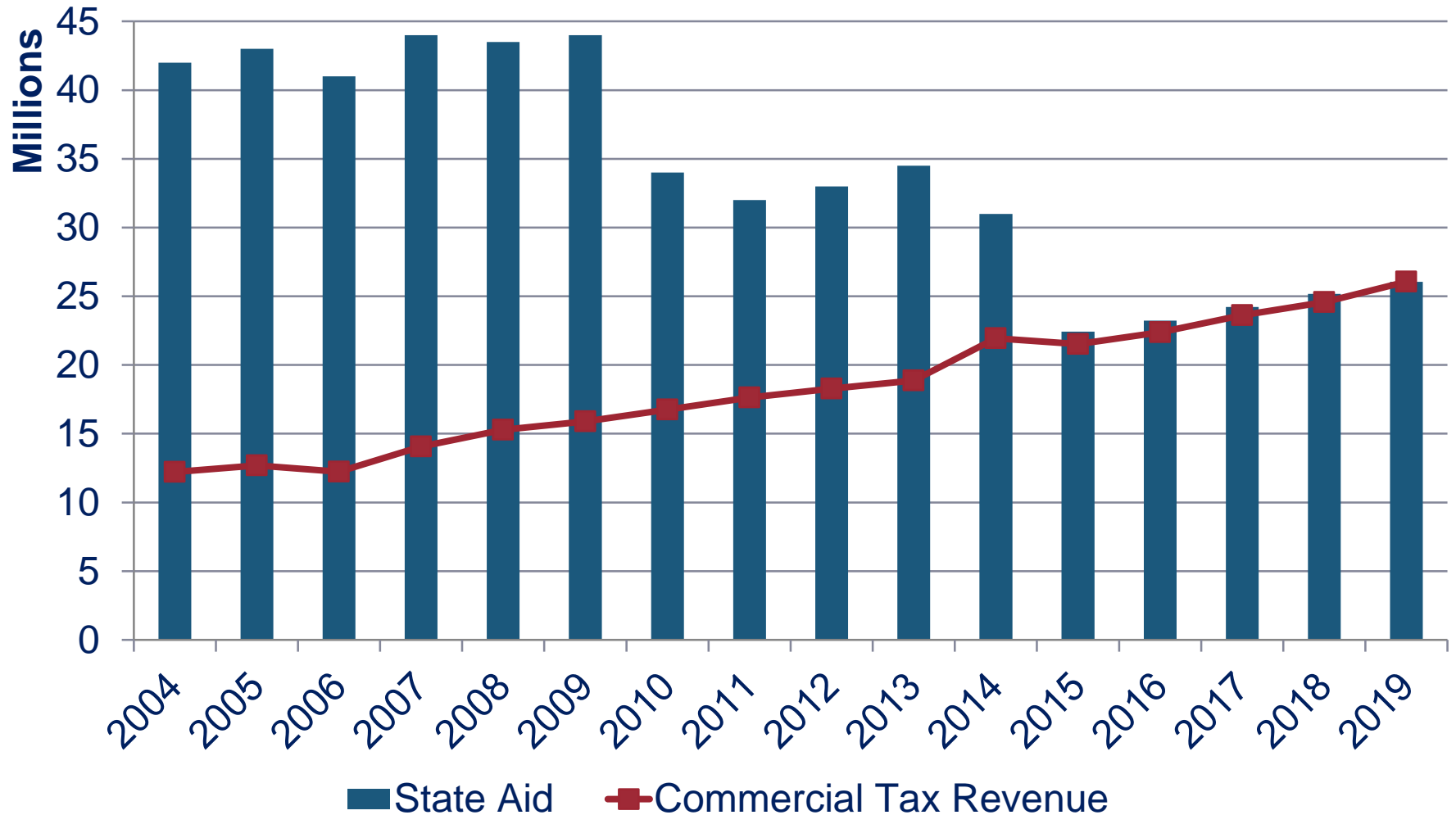


# HOTEL & MEALS TAXES HAVE NEARLY DOUBLED SINCE FY12





# COMMERCIAL TAX REVENUE NEEDED TO OFFSET DROP IN STATE AID



**Simply put, long-range  
needs can be very costly.  
We're working to make sure  
our residents are not paying  
for them alone.**

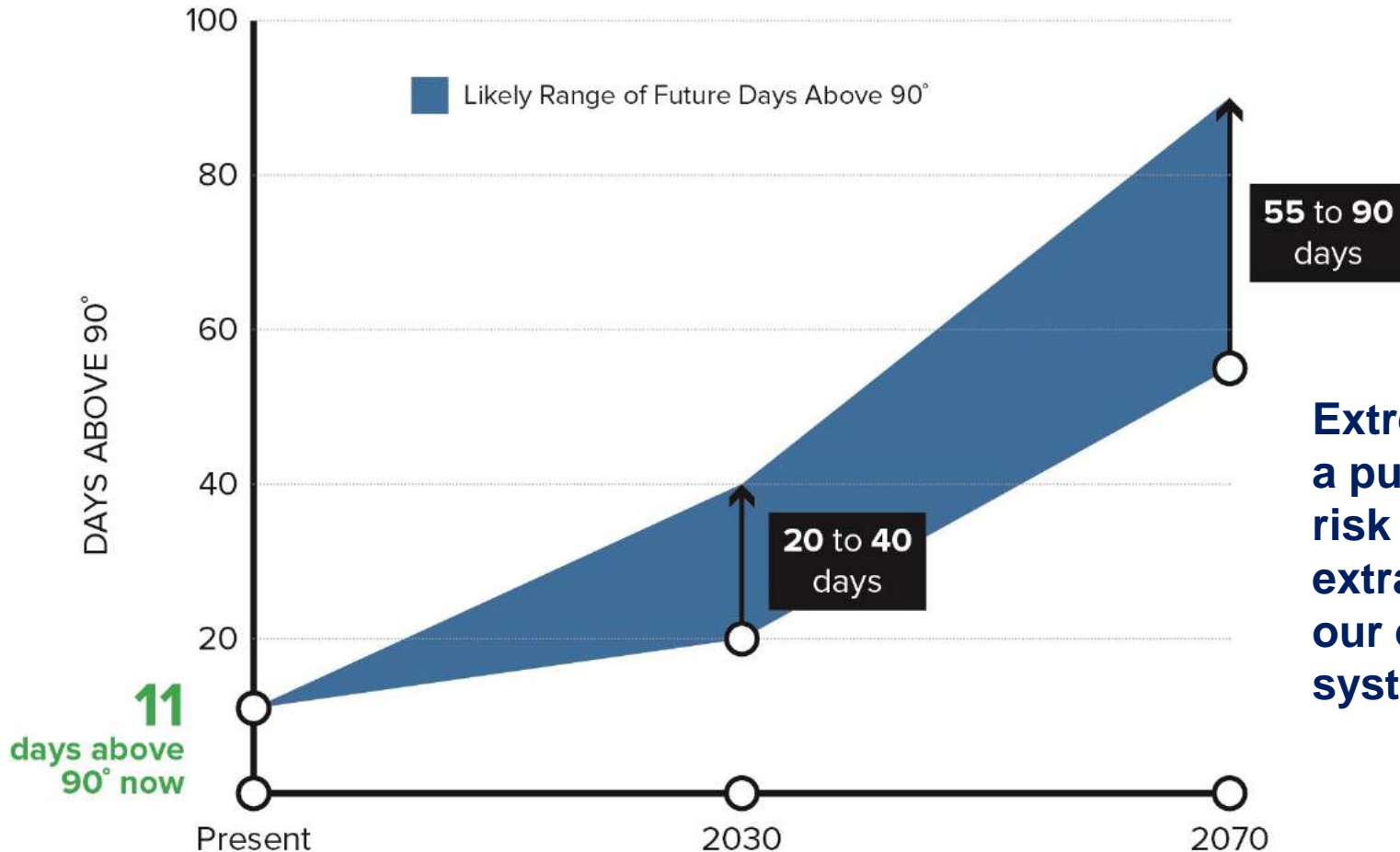
**SPEAKING OF...**

# A CLOSER LOOK: CLIMATE CHANGE AND MOBILITY



## SOMERVILLE CLIMATE FORWARD

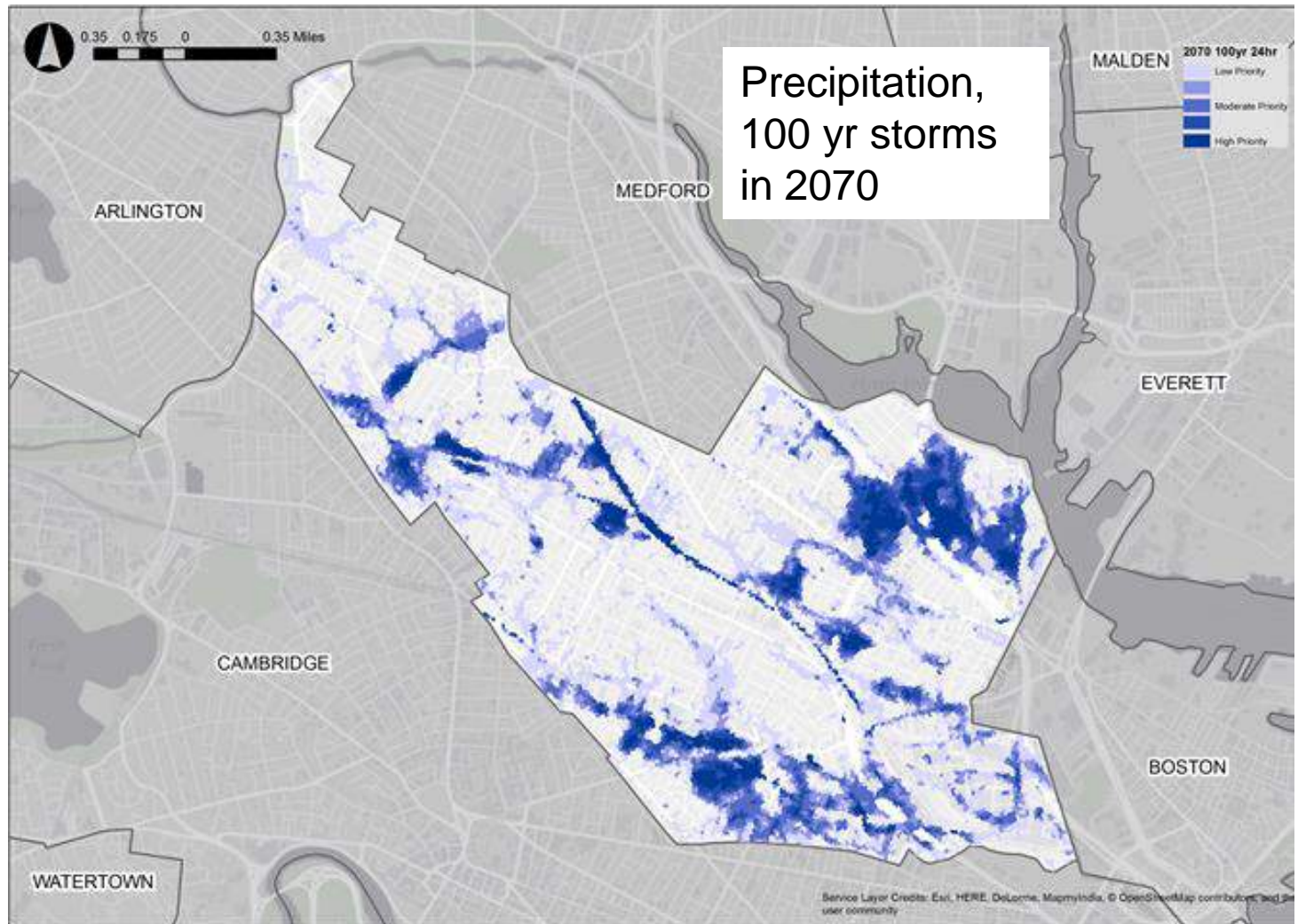
# WE'RE ALREADY FEELING THE EFFECTS OF CLIMATE CHANGE



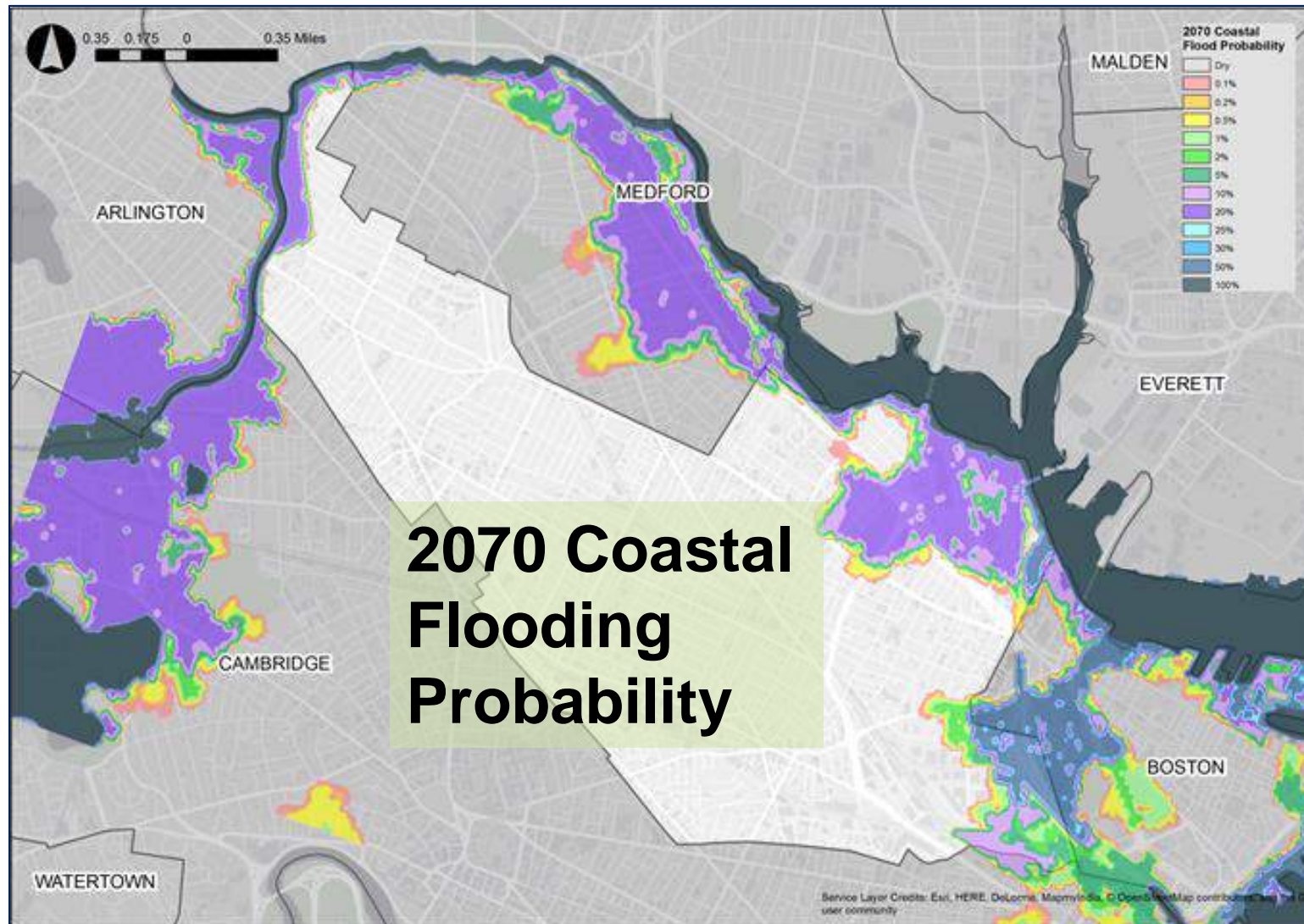
**Extreme heat is a public health risk and puts extra strain on our energy systems.**

# THE IMPACTS OF CLIMATE CHANGE WILL ONLY GET MORE SERIOUS

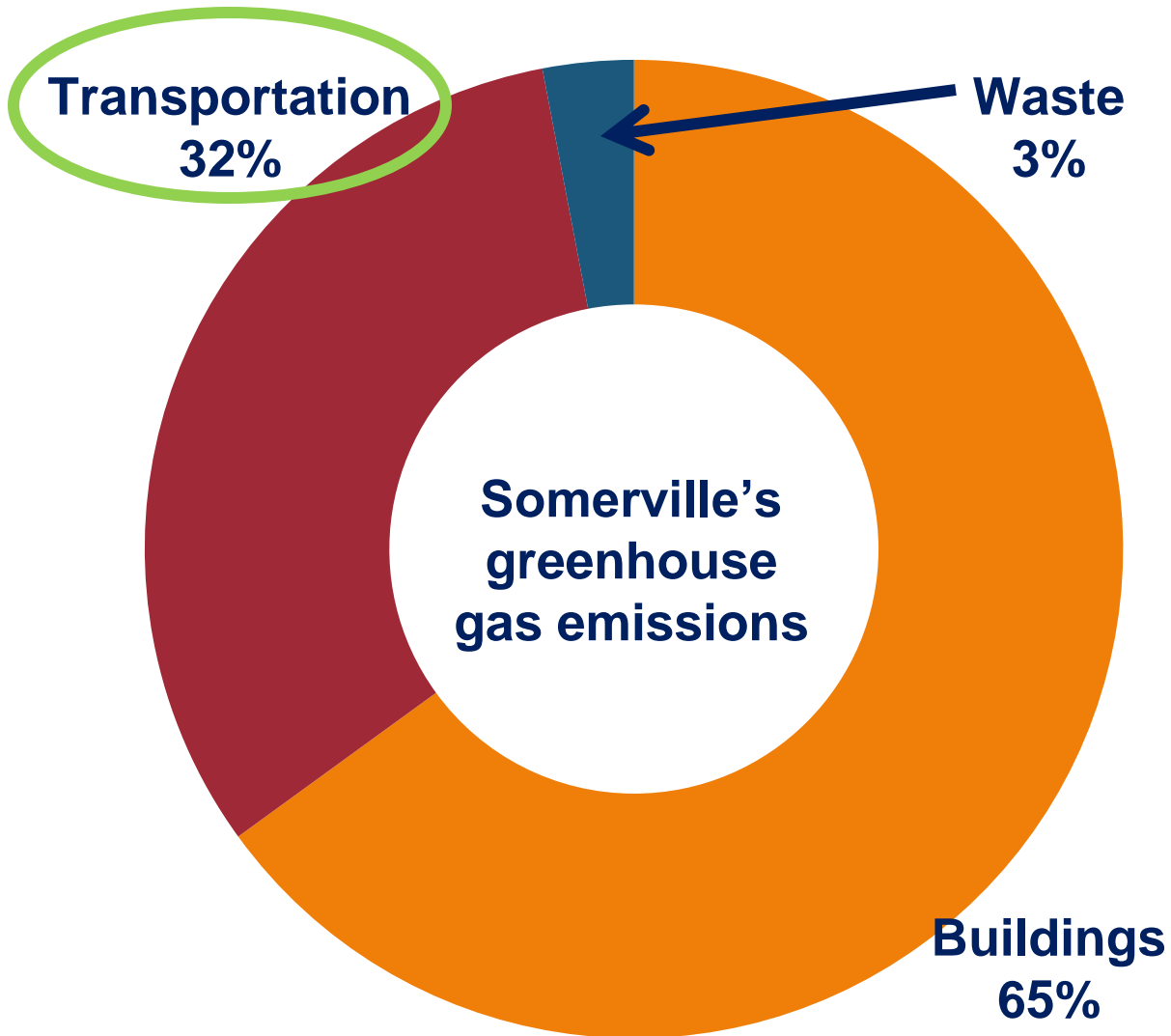
Climate change will increase the frequency and intensity of precipitation, which will worsen existing flooding issues.



# RISING SEA LEVELS INCREASE THE RISK OF FLOODING



# HOW CAN WE FIGHT CLIMATE CHANGE?



How can Somerville be carbon neutral by 2050?



Energy Efficiency



Carbon-Free Electricity



Switch Off of Fossil Fuels

# **WE CAN HELP MAKE A MOBILITY SHIFT AN EASIER CHOICE**

## **TODAY**

- Investing in dedicated bus lanes Prospect, Broadway Winter Hill & Clarendon
- 17 miles of bike lanes and 28 miles of sharrows
- Introduction of protected bike lanes
- Citywide crosswalk and lighting improvements
- Traffic calming

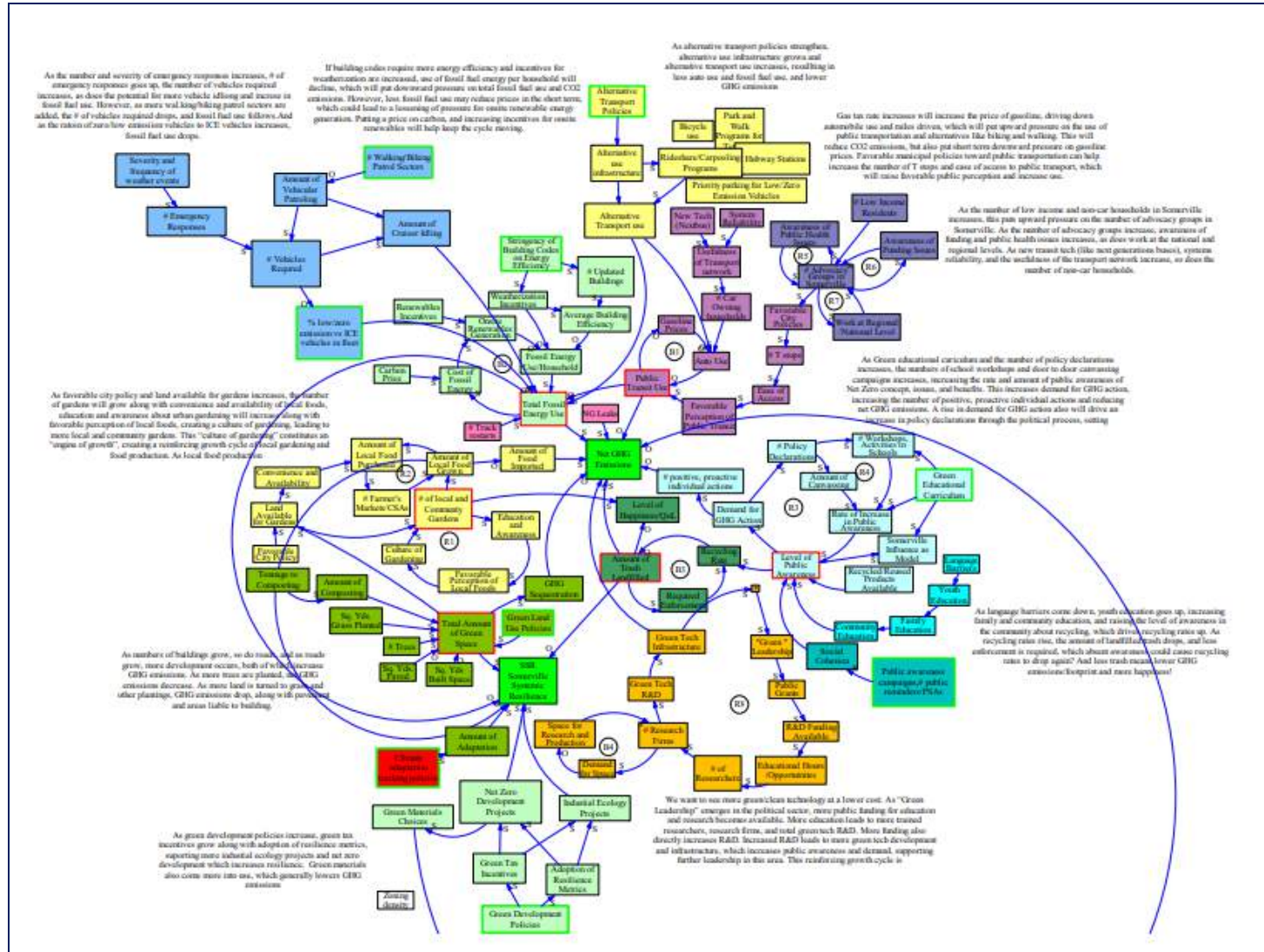
## **LONG-TERM**

- Zoning that encourages reduced car use
- Vision Zero investments
- \$50M investment and decades of advocacy for Green Line Extension
- Community path extension
- Regional cooperation on Mystic trail network and connections
- Regional cooperation on congestion relief

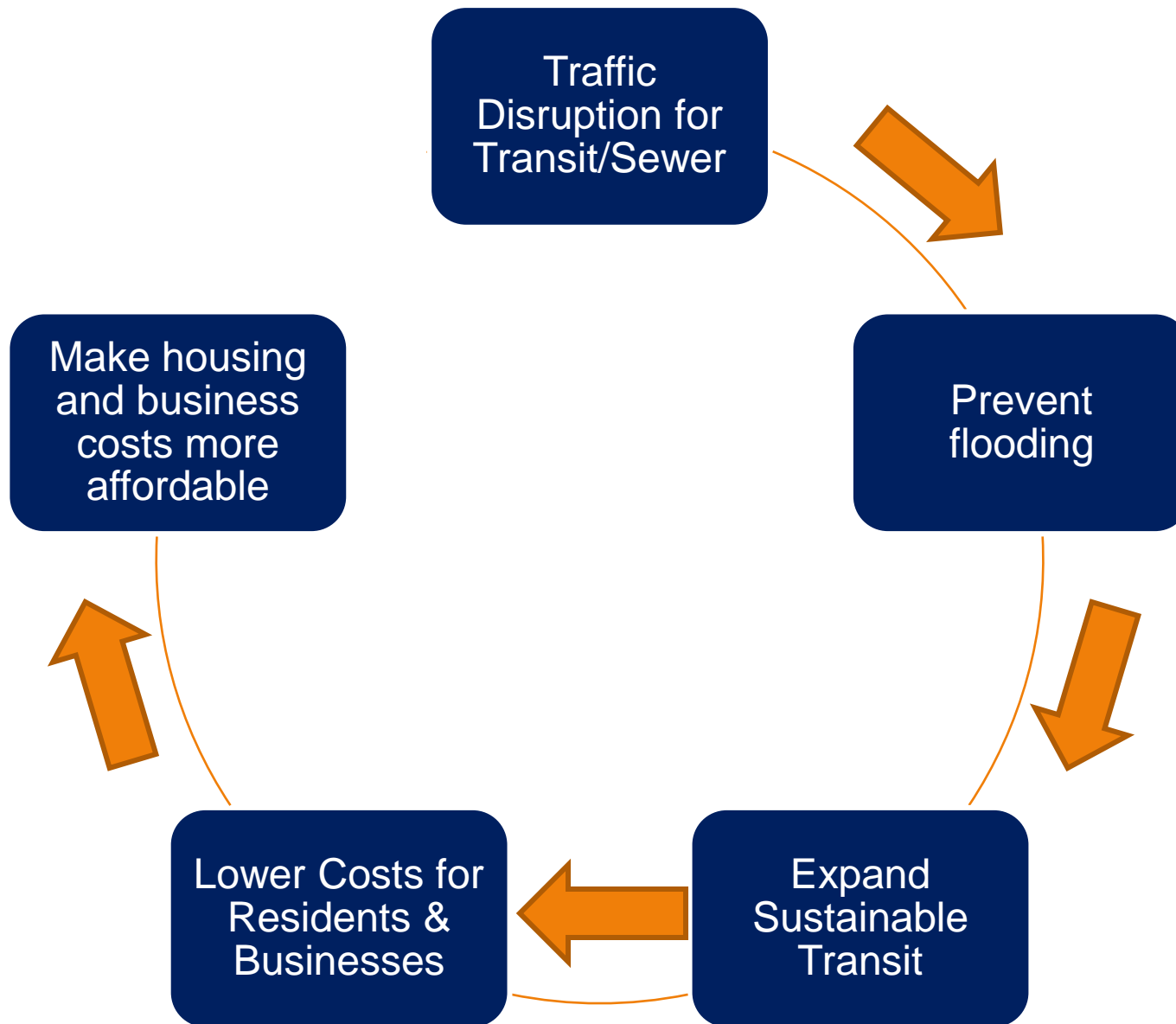


**After a century of car-centric culture, these changes might feel sudden and they may be uncomfortable. But we can't afford to wait any longer to address climate change.**

# IT'S ALL CONNECTED



# IT'S ALL CONNECTED



**Somerville, a city  
committed to meeting  
its current and future  
responsibilities.**



# ResiStat Ward 6: Police May 1, 2019



Chief David Fallon

# Ward 6 Crime



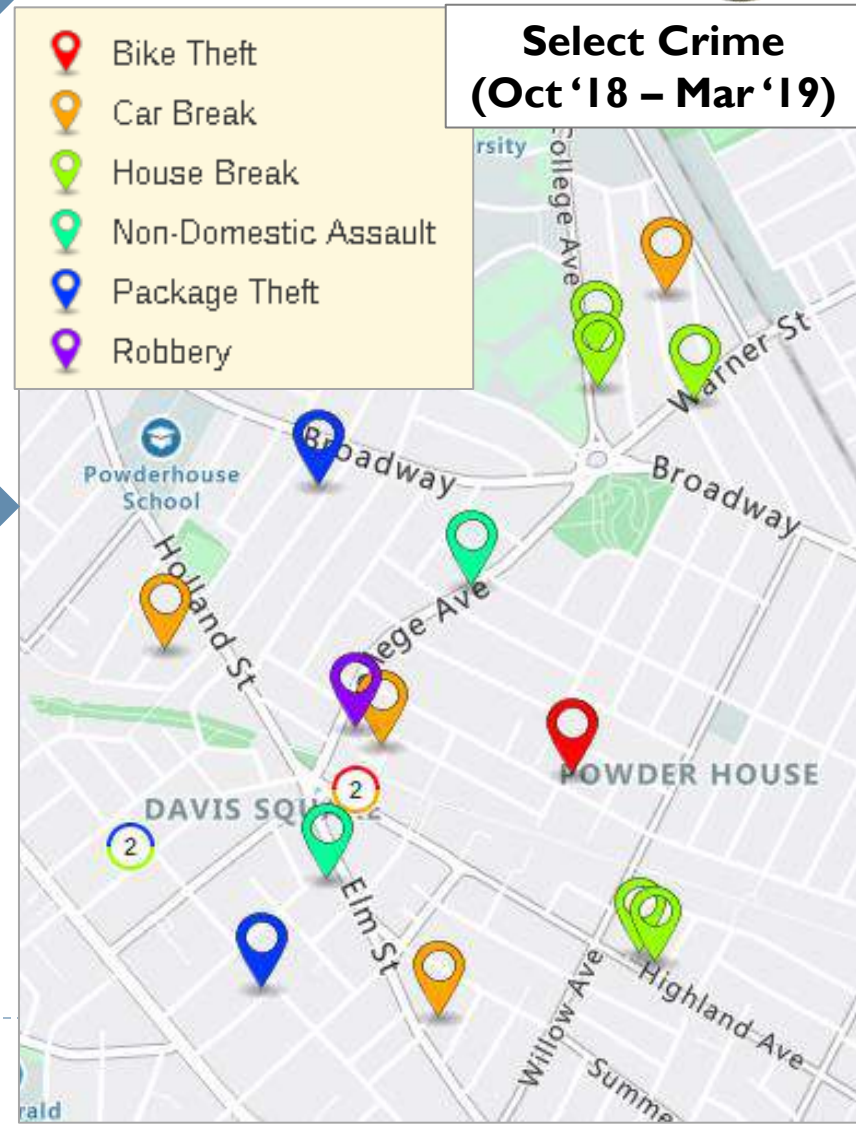
## Index Crime Trends

- ▶ Citywide:
  - Index crime is **down 6%** over one year and **down 13%** over two years.
- ▶ Ward 6:
  - Index crime has **decreased 12%** over one year and **5%** over two years.

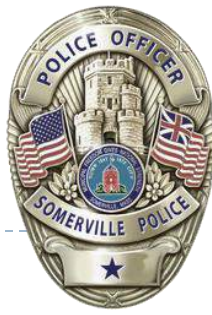
## Crime Prevention

- ▶ Residential Burglary
  - Lock deadbolts (not just knobs)
  - Double-secure windows (lock + safety tabs, wooden dowel or wood screws)
- ▶ Car Breaks
  - Always lock your vehicle

▶ Index crime statistics based on previous 12 months (4/1/18 – 3/31/19) year-over-year



# Bravo Team: Strategic deployment to address bridge closures and road safety



- ▶ SPD prepares action plans for each construction site in the city
- ▶ Bravo Team was created as an offshoot of Cops on Bikes for Regional Assistance (COBRA)
- ▶ 4 additional officers will be in the community on bikes (specially trained)
- ▶ They will support traffic enforcement, emergency response, city events, and other needs



COBRA members at  
2019 Boston Marathon

▶ Bravo Team

# Comprehensive enforcement strategy for all road users



- Heavy enforcement of failure to stop/yield
- Targeted enforcement of speeding in safety zones and reduced speed zones
- Additional focus on distracted driving and occupant protection
- Construction zones & areas impacted by traffic overflow



- Bicycle enforcement throughout city, with attention to Somerville Ave and Beacon St corridors



- Enforcement of vehicle crosswalk violations
- Verbal warnings to pedestrian violators

## Traffic Enforcement Grants

- \$21,000 awarded in Traffic Enforcement Grant in Federal Fiscal Year (FFY) 2019, a 75% increase from FFY 2018 due to quality of reporting and enforcement

Grant / Mobilization	FFY18	FFY19
Traffic Enforcement Grant	\$12,000	\$21,000
<i>Impaired Driving Campaigns (2)</i>	\$8,000	\$14,700
<i>Distracted Driving</i>	\$4,000	\$2,100
<i>Click it or Ticket</i>	n/a	\$4,200
Pedestrian & Bicycle Safety Enforcement Grant	\$4,750	\$8,000
Child Passenger Safety Equipment Grant Program	\$5,000	\$3,500





# Safe streets require more than enforcement

Traffic enforcement is one component of Vision Zero. Reducing crashes is a community and multi-department effort

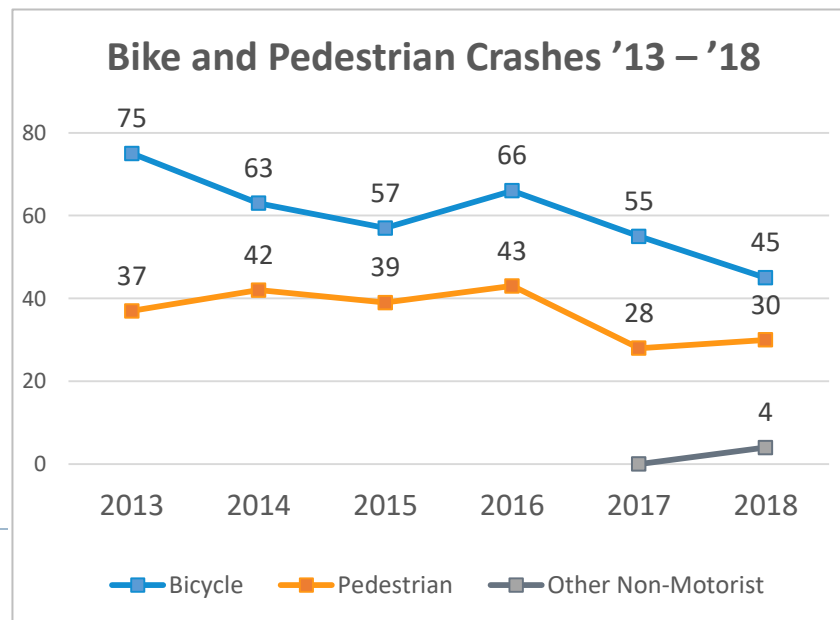
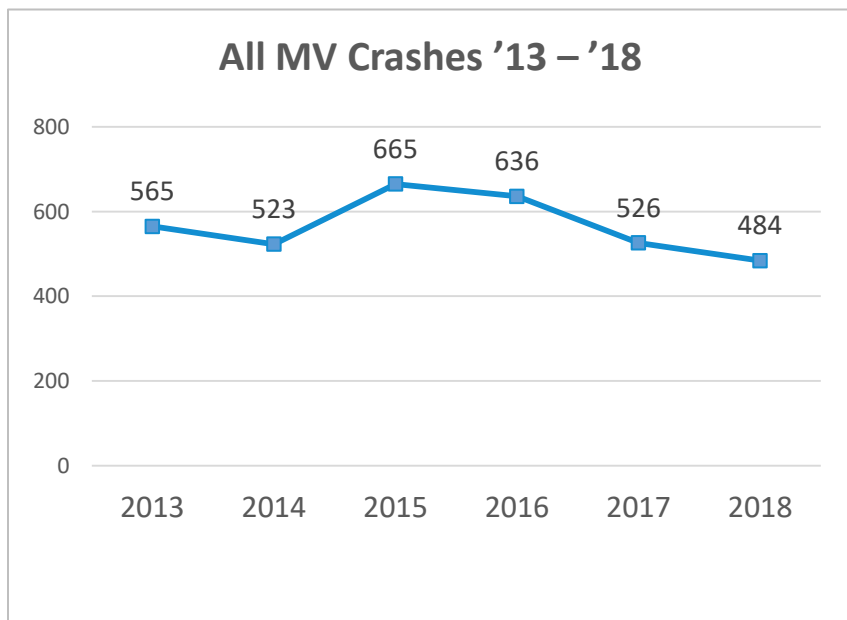
## Education

- ▷ Safe Routes to School: SPD collaborating with Mass DOT and SPS to develop implementation plan
- ▷ CYCLE Kids: Focus on bicycle safety for SPS 5th graders

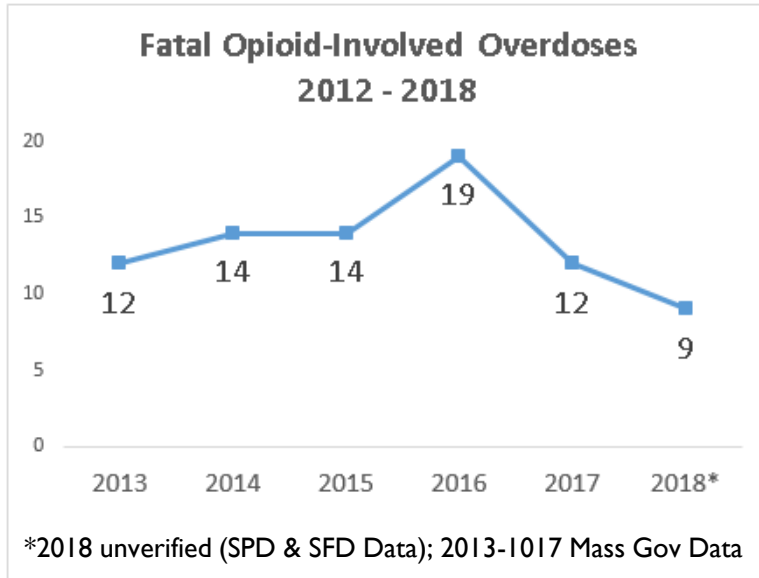
## Relationship Building

- Emphasis on positive police interactions with the community
  - STEPS Program
  - Community policing strategies
  - Relief spots at schools

Trend data on crashes show recent decreases in motor vehicle (MV) crashes



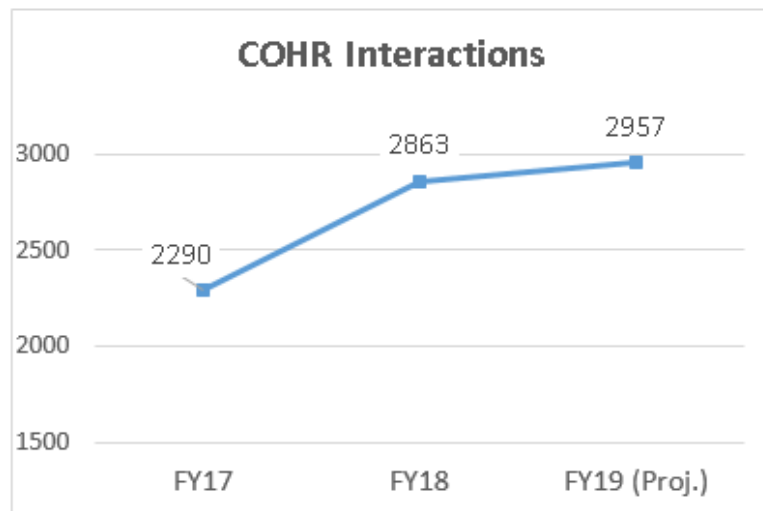
# Fatal Opioid Overdoses & COHR Unit



## Overdose Trends

- ▶ Non-Fatal OD's have decreased 12% over 1 year and 23% over 2 years.
- ▶ Fatal Opioid-involved Overdoses are estimated to have decreased 25% over 1 year and 53% over 2 years.

## Office of Community Outreach, Help & Recovery



- ▶ Assists those with addiction and/or mental health issues by connecting to services & developing self-care strategies
- ▶ COHR Case Management Team is projected to have 2,957 interactions with clients in FY19.
- ▶ COHR Case Management Team Members: COHR Director, Jail Diversion Coordinator, Recovery Coach (PT Intern), MSW Intern (PT)

# Substance Misuse, Mental Health, Domestic Violence, and Sexual Assault Support

	Contact	Service	Contact Info.
Substance Misuse	MA Substance Use Hotline	Treatment program info	800-327-5050
	Cambridge Health Alliance	Walk-ins Tue. 11:30; MA Health accepted	617-591-6051
	Caspar First Step Outreach	Assist in accessing detox.	617-661-0600
	Riverside Community Care	Outpatient; MA Health accepted	617-623-3278
	North Charles	Maintenance therapy; MA Health only	617-661-5700
	Column Health	Counseling, medication assisted treatment	339-368-7696
	Learn 2 Cope	Family support; Mon. 7 PM	1575 Cambridge St, CAM
	Family Anonymous	Family support; Tue. 7 PM	121 Washington St, MEF
Mental Health	Cambridge Health Alliance	Inpatient & outpatient services	Adults: 617-591-6033 Juveniles: 617-665-3458
	BEST Team	Psychiatric emergency services; MA Health	800-981-4357
	Riverside – Child Guidance Center	Juvenile/family services	617-354-2275
	Neighborhood Counseling & Community Services	Counseling, skill & strength-based strategies	781-600-6074
Domestic Violence	RESPOND	Shelter, crisis hotline, services, education	Hotline: 617-623-5900 Services: 617-440-7267
	Maureen Dipaolo, SPD Family Services	Victim Witness Advocacy	617-625-1600 x 7279
Sexual Assault	BARCC (Boston Area Rape Crisis Center)	Free legal consultation, counseling, and education for survivors and family members of survivors	Hotline: 800-841-8371 <a href="https://barcc.org">https://barcc.org</a>
Additional Services	Cambridge Health Alliance Victims of Violence Program	Adult out-patient trauma clinic providing mental health services for crime victims	617-591-6360
	De Novo	Free civil legal assistance and affordable psychological counseling for low-income people	617-661-1010 Denovo.org



# GLX Bridge Closures by the Numbers

---

- ▶ 16+ officers in the Broadway bridge area from 6 a.m. to 8 p.m. during first two weeks
- ▶ At least one officer at each side of the Broadway bridge 24 hours a day
- ▶ GLX Reboot Your Commute campaign sent to:
  - ▶ 96 neighboring cities and towns
  - ▶ 84 media outlets
  - ▶ 29 hospitals and medical facilities
  - ▶ 26 colleges and universities
  - ▶ Large employers





---

Thank you

For questions related, to crime statistics, please email  
[crimeanalysis@police.Somerville.ma.us](mailto:crimeanalysis@police.Somerville.ma.us).

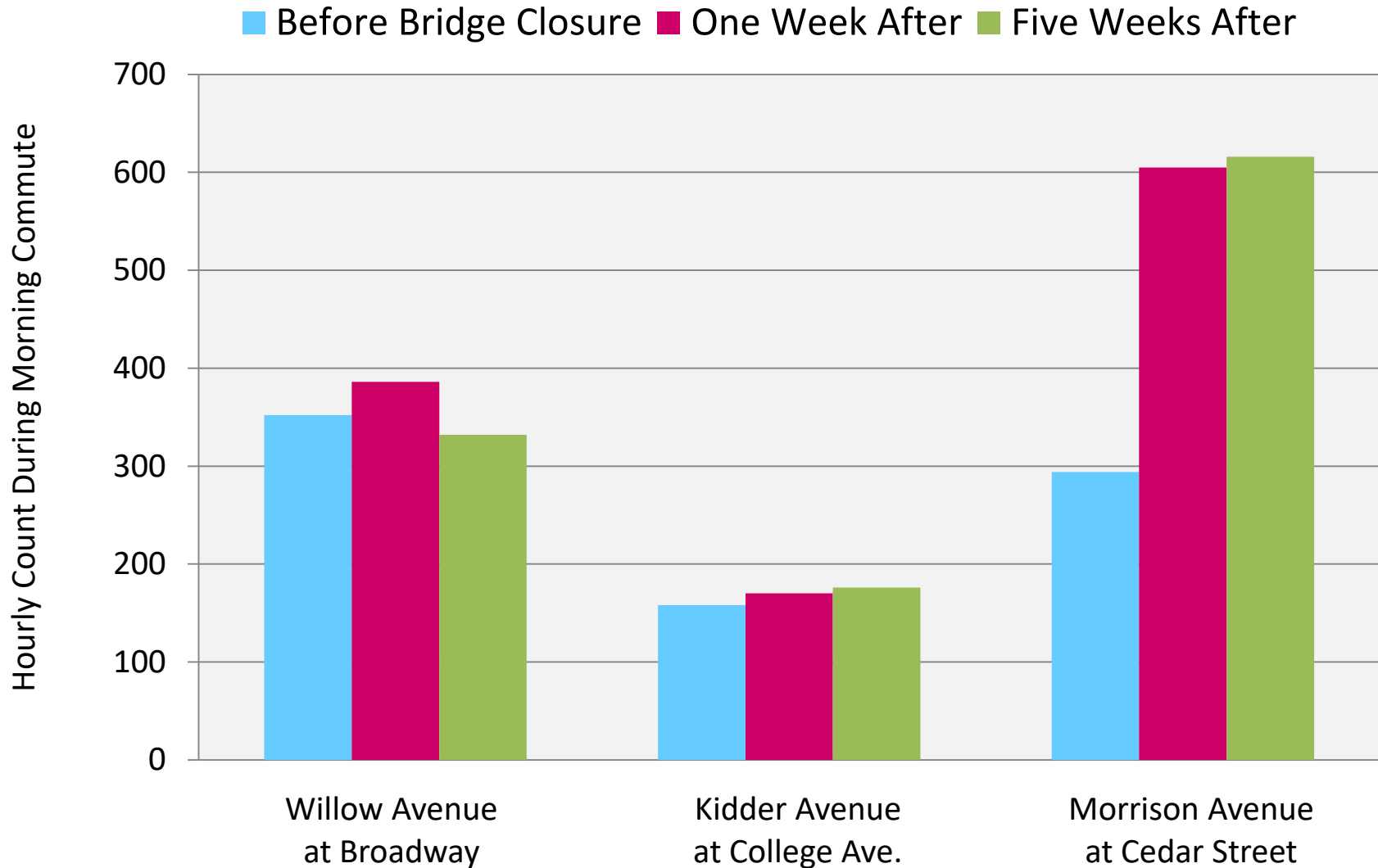
---



BRAD RAWSON,  
DIRECTOR

# TRANSPORTATION & INFRASTRUCTURE

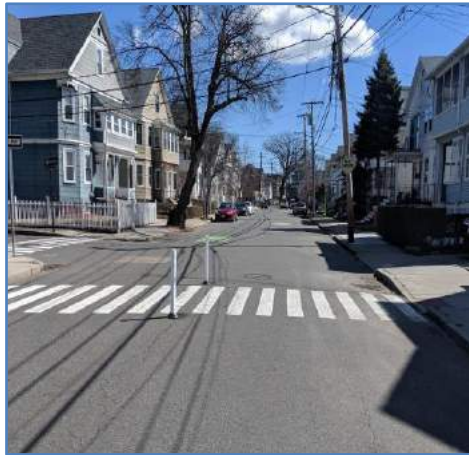
# City is Monitoring Traffic Volumes in the Neighborhood



# City is Conducting Low-Cost Traffic Calming Experiments

## Preliminary results for Neighborhood Flex-Post Pilot #1

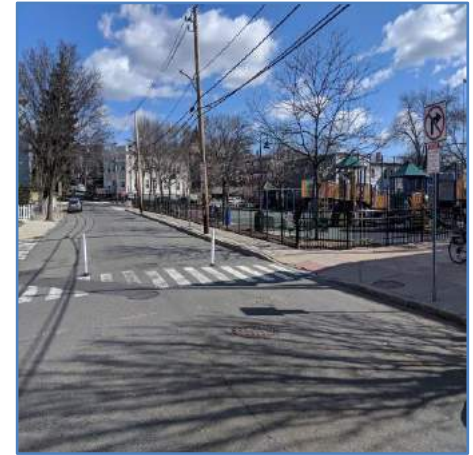
Centerline



Curb Extension



Choker



Posts Deployed	31	20	32
<i>Standing at Day 30</i>	1	4	11
Retention Rate	3%	20%	34%



# City is Conducting Low-Cost Traffic Calming Experiments

## Preliminary results for Arterial Flex-Post Pilot #1

Location: Powder House Boulevard at Hardan Road

Curb Extension

Centerline



**Before** (April 2017)

**After** (March 2019)

Speeding Rate

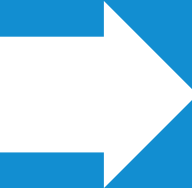
57%

38%

Typical Speeds

26 mph

24 mph



The **Vision Zero Action Plan** puts forth the City's strategy to eliminate serious injuries and fatalities on our streets.

[www.somervillema.gov/visionzero](http://www.somervillema.gov/visionzero)  
<https://www.visionzerocoalition.org/>

# Vision Zero is an International Movement for Safe Streets

## Vision Zero Cities

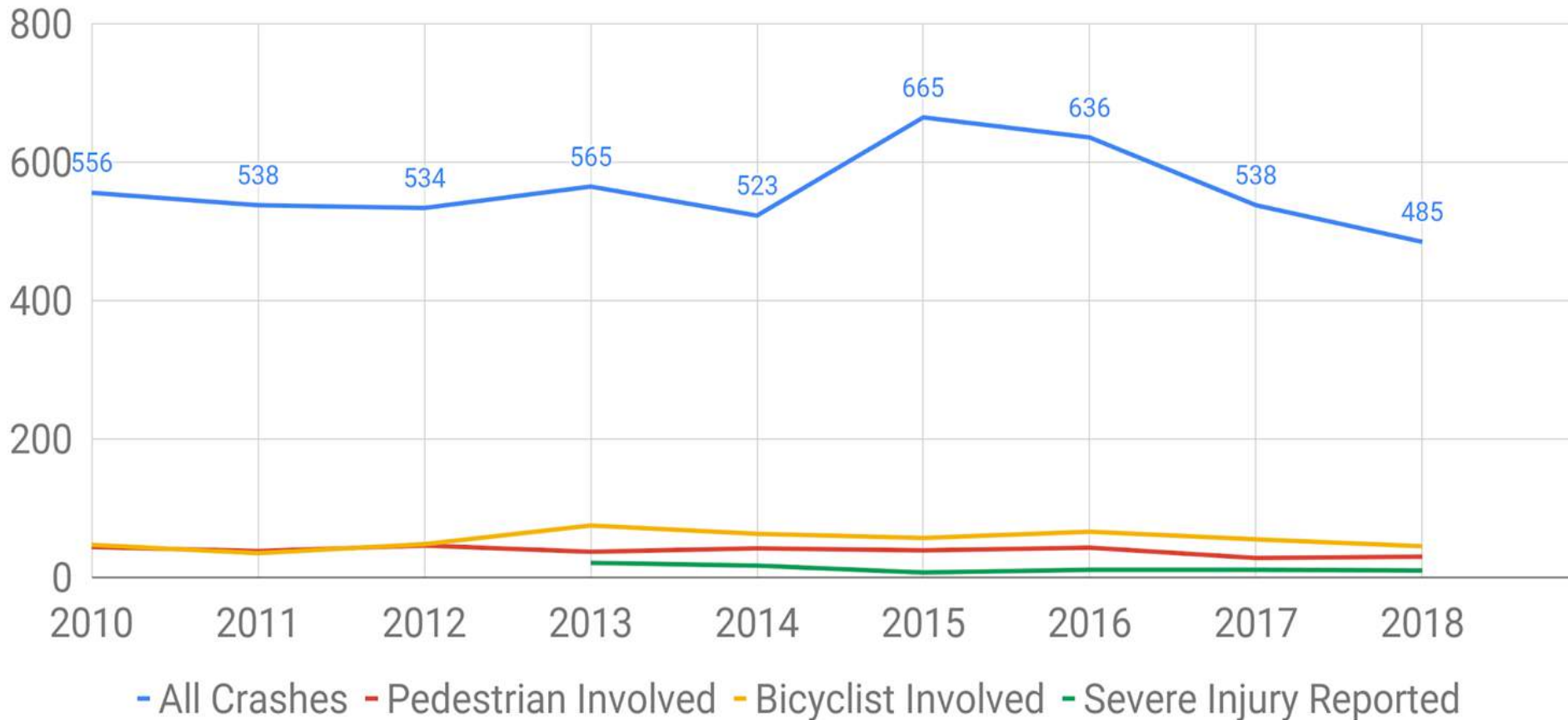
A Vision Zero City meets the following minimum standards:

- Sets clear goal of eliminating traffic fatalities and severe injuries
- Mayor has publicly, officially committed to Vision Zero
- Vision Zero plan or strategy is in place, or Mayor has committed to doing so in clear time frame
- Key city departments (including Police, Transportation and Public Health) are engaged.



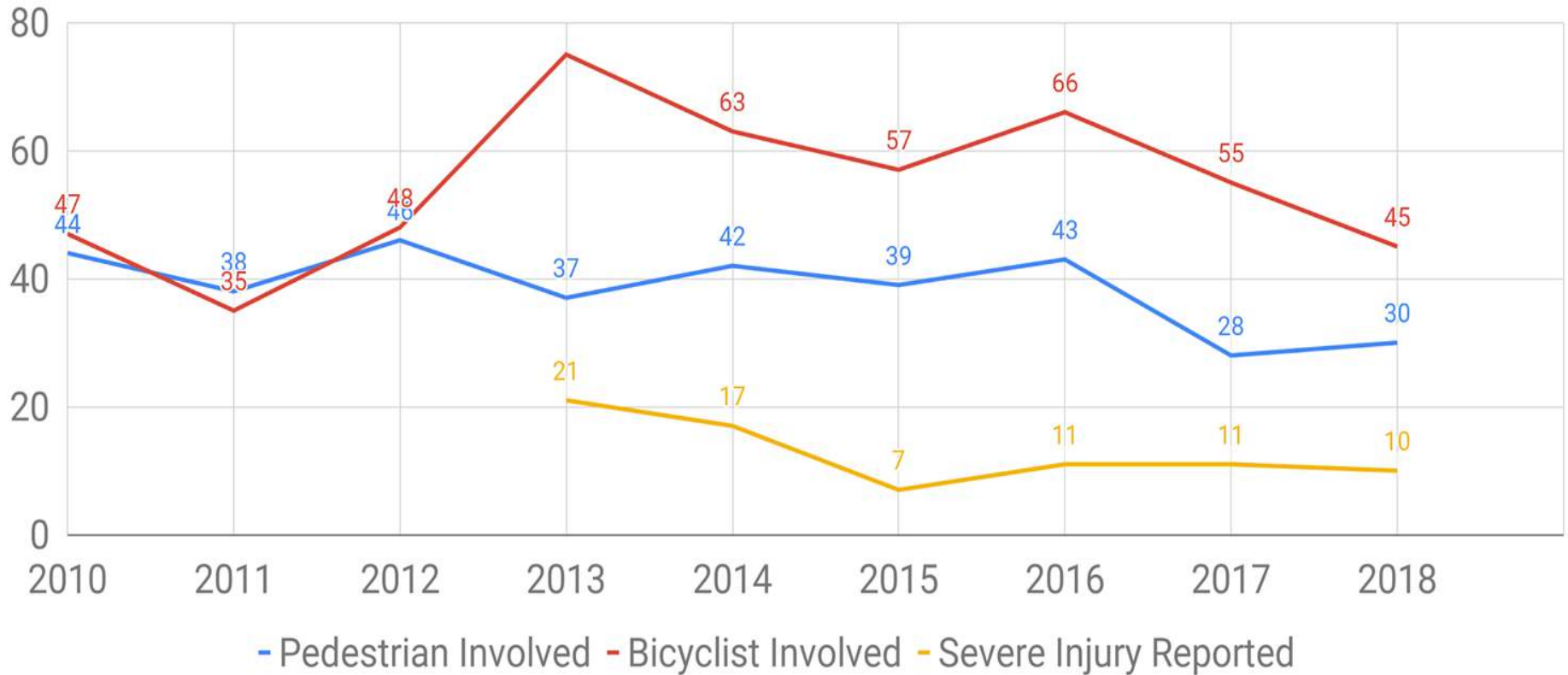
# Vision Zero Measures and Reports Progress

## Crashes Reported on Somerville Streets 2010-2018



# Zooming in on Crashes with High Consequences

## Crashes Reported on Somerville Streets 2010-2018



Fatal crashes in 2011, 2014, 2017, 2019

# Vision Zero Action Plan: Process to Date and Next Steps

Sept. 2018

Vision Zero Task Force formed

Oct. – Jan. '19

Task Force regular meetings

Feb. 2019

“Street Team” outreach began

March 27

Community Meeting

April 3

Public Hearing

April 24

Community Meeting

May -June

Task Force regular meetings

June - July

Draft plan release for comment



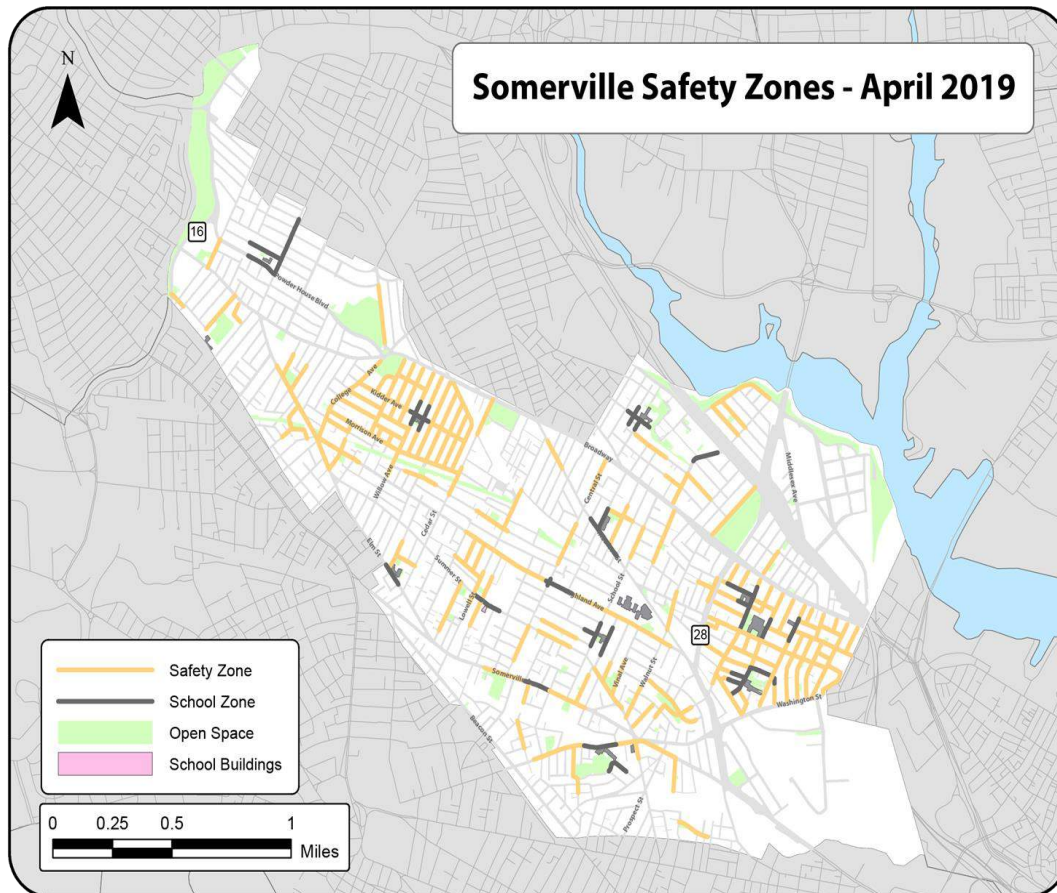
KEY STRATEGY AREA:

1

# Set and Enforce Safe Speed Limits

PROGRESS TO DATE

## Centerline Mileage of 20mph Safety Zones in Somerville





KEY STRATEGY AREA:

2

# Physical Traffic Calming

Location: College Avenue at Dearborn Road



Before



After

## 2017-2018 Accomplishments

- ▷ Somerville Avenue (at Union Square Plaza)
- ▷ College Avenue (Dearborn-Professors Row)
- ▷ Temple Street (at Mystic Avenue)
- ▷ Cedar Street (Broadway-Highland)
- ▷ Lowell Street (Medford-Vernon)

## 2019 Projects

- ▷ Powder House Boulevard
- ▷ Powder House Rotary
- ▷ Beacon Street
- ▷ Munroe Street

## Draft Plan 3-Year Goal

- ▷ Four projects per year





# Safer, Separated Bike Lanes

Location: Webster Avenue



Before



After

## 2017-2018 Accomplishments

- ▷ Prospect Street
- ▷ Webster Avenue
- ▷ Washington Street (Union-McGrath)

## 2019 Projects

- ▷ Beacon Street (Oxford-Washington)
- ▷ Medford Street (Somerville-Gore)
- ▷ Washington Street (Franklin-Inner Belt)
- ▷ Broadway (Cedar-Temple)
- ▷ Cedar Street (Highland – Elm)
- ▷ Grand Union Boulevard
- ▷ Mount Vernon Street
- ▷ Shore Drive

## Draft Plan 3-Year Goal

- ▷ Two projects per year

# Address Powder House Rotary

Spring 2019 Update: Engineering review is underway; potential interim changes Fall 2019

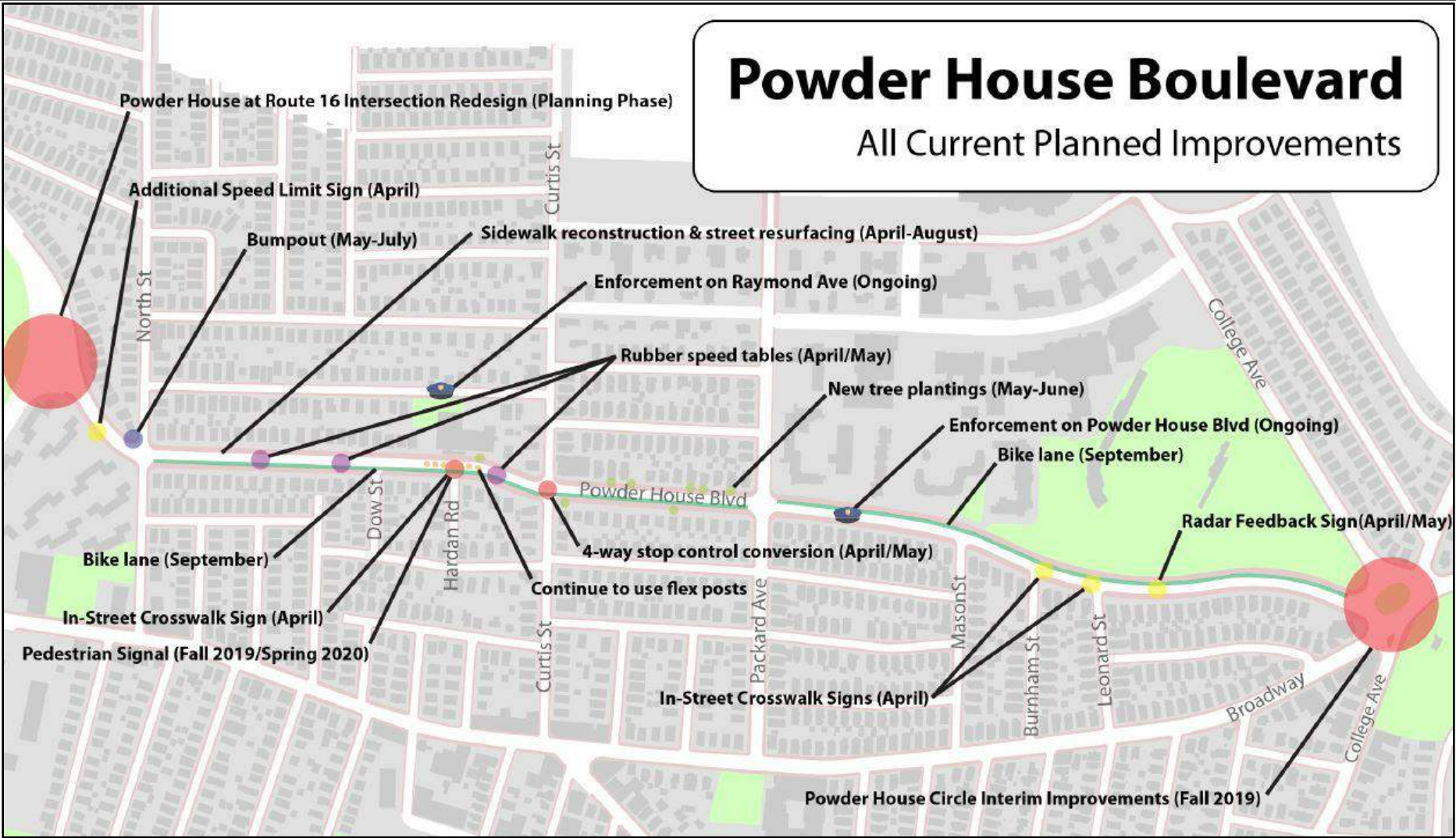


## Issues and next steps

- ▷ New England roundabouts should not be signalized!
- ▷ Center island crosswalks are the only thing that requires signals here
- ▷ In this scenario, safety and congestion improve but pedestrians lose the center island
- ▷ Bike lane strategy is still under review

# Powder House Boulevard

All Current Planned Improvements



FRED BERMAN,  
DEPUTY DIRECTOR

OFFICE  
OF HOUSING  
STABILITY



# Office of Housing Stability

Fully Staffed as of March 2019

**Ellen Shachter**

*Director*

**Fred Berman**

*Co-Deputy Director*

**Susan Chimene**

*Co-Deputy Director*

**Marie Dumé**

*Housing Intake & Special  
Projects*

**Lydia López**

*Case Manager &  
Communications*

**Brooke Murphy**

*Case Manager &  
Landlord Outreach*

# HOUSING INSTABILITY SNAPSHOT

**332 eviction cases in  
Somerville District  
Court in 2018**

**Approximately 17.8%  
of renter households  
paying over 50% of  
income for shelter**

**Median rents:**

**1br - \$2,125**

**2br - \$2,400**

**3br - \$2,925**

**1,130 rental units were  
converted to condos  
from 2010-2017**

**Many affordable housing waitlists have 5-10 year wait times or are closed entirely.**

# DIRECT SERVICES THROUGH OHS

- **Advice and information on housing issues**
- **Referrals to community agencies to prevent displacement**
- **Financial assistance to prevent homelessness**
- **Advocacy with landlords and agencies to resolve housing issues**
- **Tenant case management**
- **Housing search**
- **Workshops and on-line resources for landlords**
- **Up-to-date information on local and regional affordable housing opportunities**

# POLICY AND PROGRAM INITIATIVES

<b>Program/Policy</b>	<b>Status</b>
<b>Formation of OHS Advisory Board</b>	<b>First meeting tonight!</b>
<b>Updated condo conversion ordinance</b>	<b>Passed by the City Council on March 27 (regulations under development)</b>
<b>Real estate transfer fee</b>	<b>Pending State legislation and home rule petition</b>
<b>Right to purchase for tenants and affordable housing non-profits</b>	<b>Pending City ordinance and State legislation</b>
<b>Right to counsel in eviction cases</b>	<b>Pending State legislation</b>
<b>Working with landlords to include OHS info when tenants are served a notice to quite</b>	<b>Planned</b>
<b>Targeting existing resources to residents who were displaced or at risk of being displaced</b>	<b>In place for 100 Homes Initiative</b>



**THANK YOU**

**RESISTAT 2019**