



Ward 2 ResiStat
Mayor Joe Curtatone
Alderman J.T. Scott

Where Can I Learn More?

somerillema.gov

somerillema.gov/newsletter

somerillema.gov/events

somerillema.gov/resistat

How Do We Achieve Our Goals & Stay Within The Budget?



Infrastructure



Housing



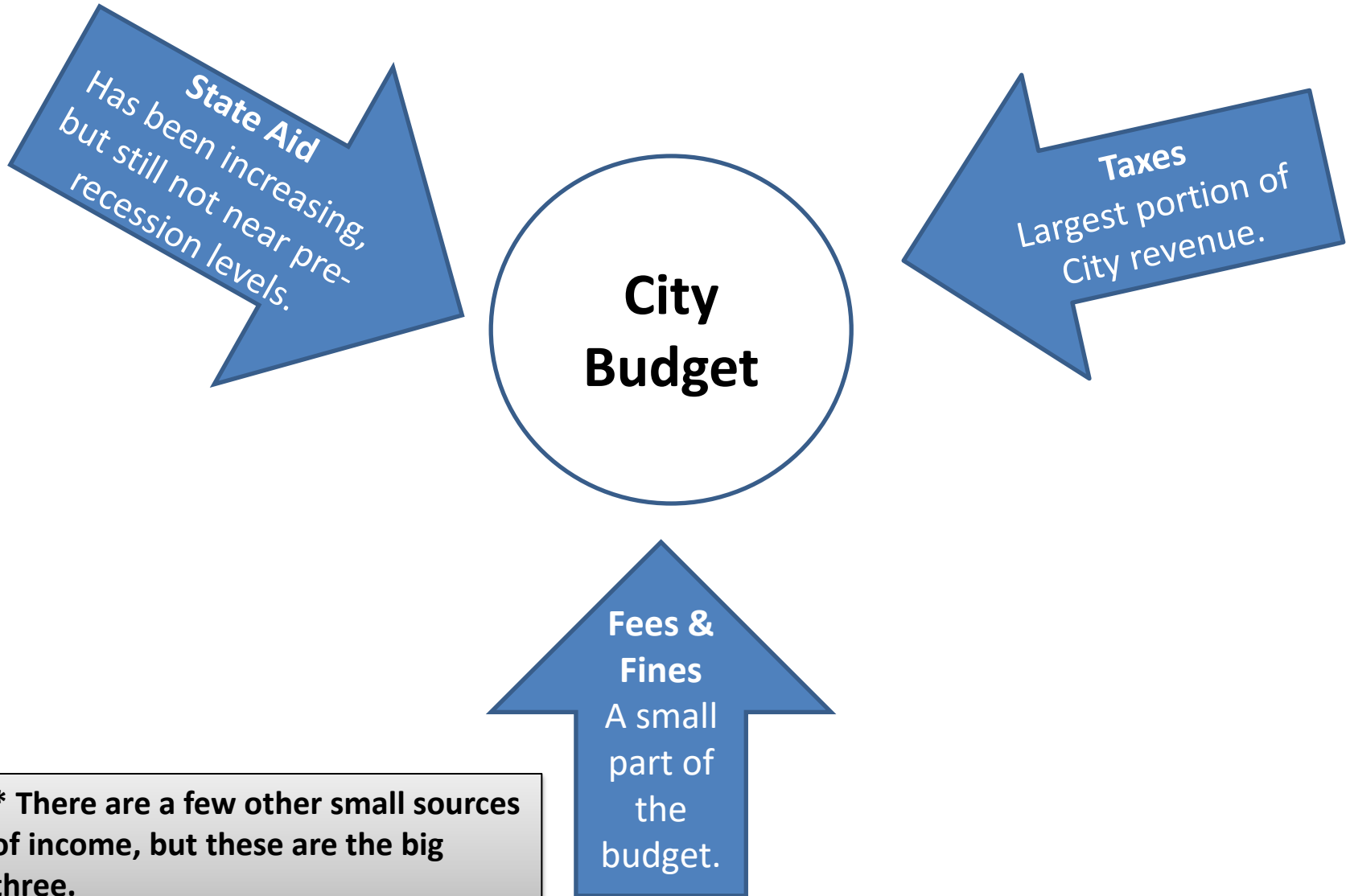
Trees



Schools

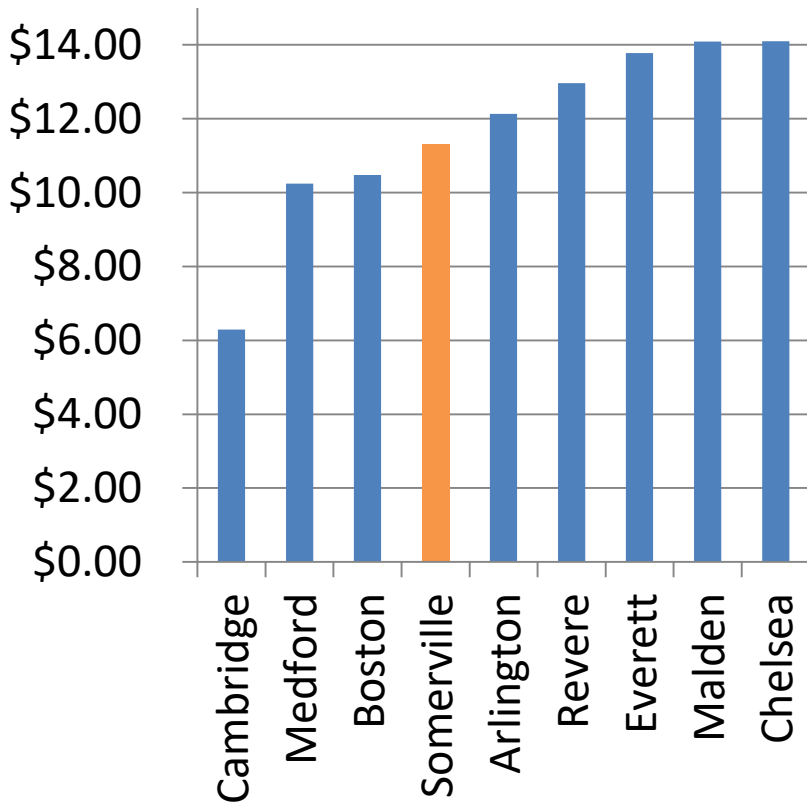
And all our other priorities.

A 90-Second Budget Primer

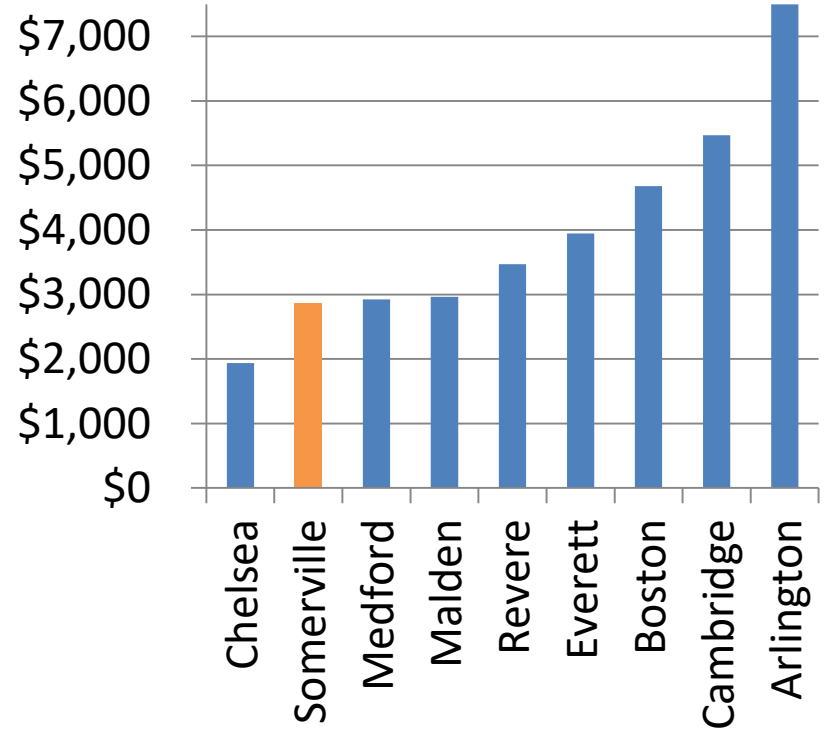


How Somerville Compares to Our Neighbors

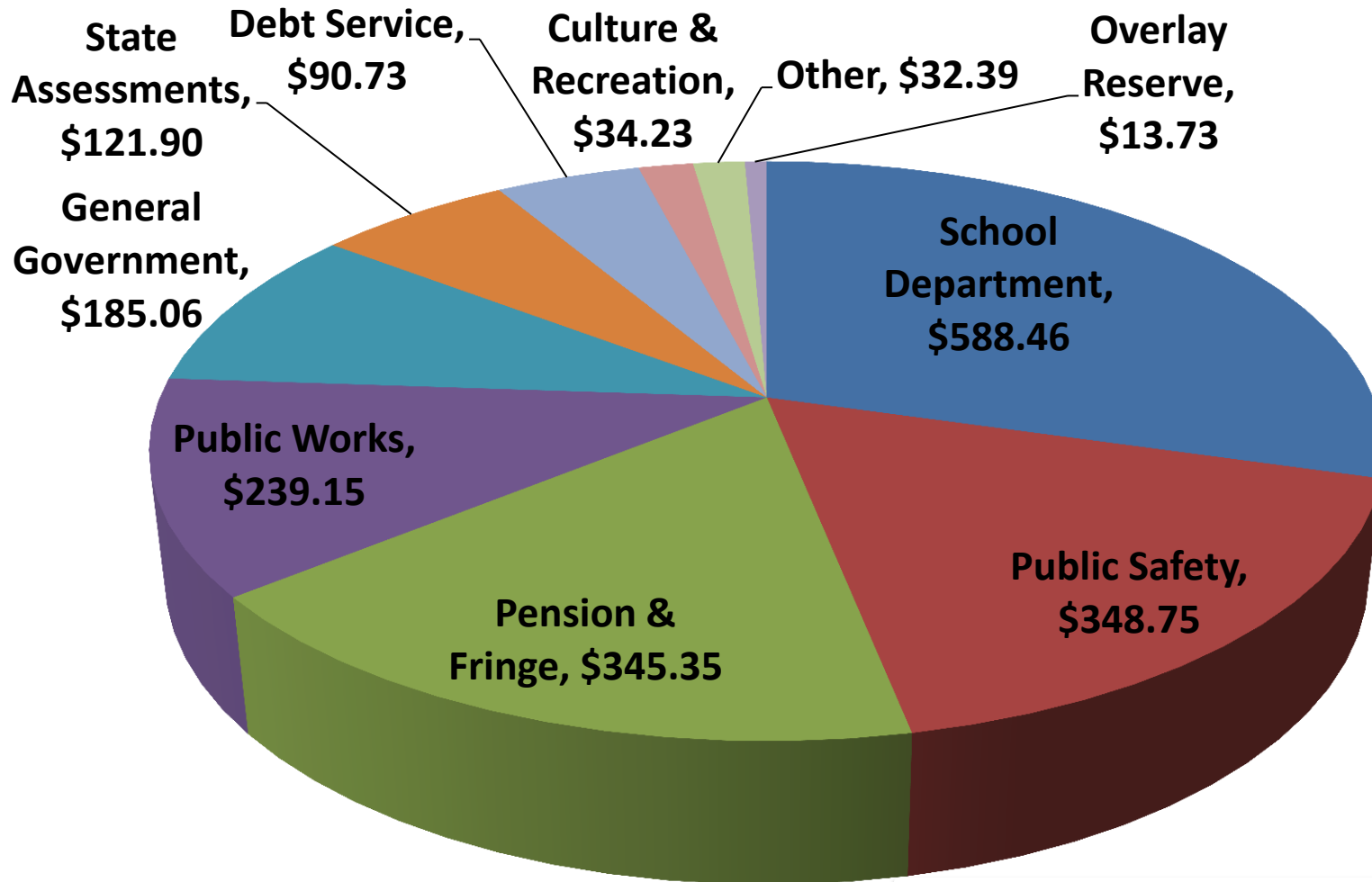
2018 residential tax rate



Approximate operational budget spending per capita



How a \$2,000 Tax Bill Gets Spent

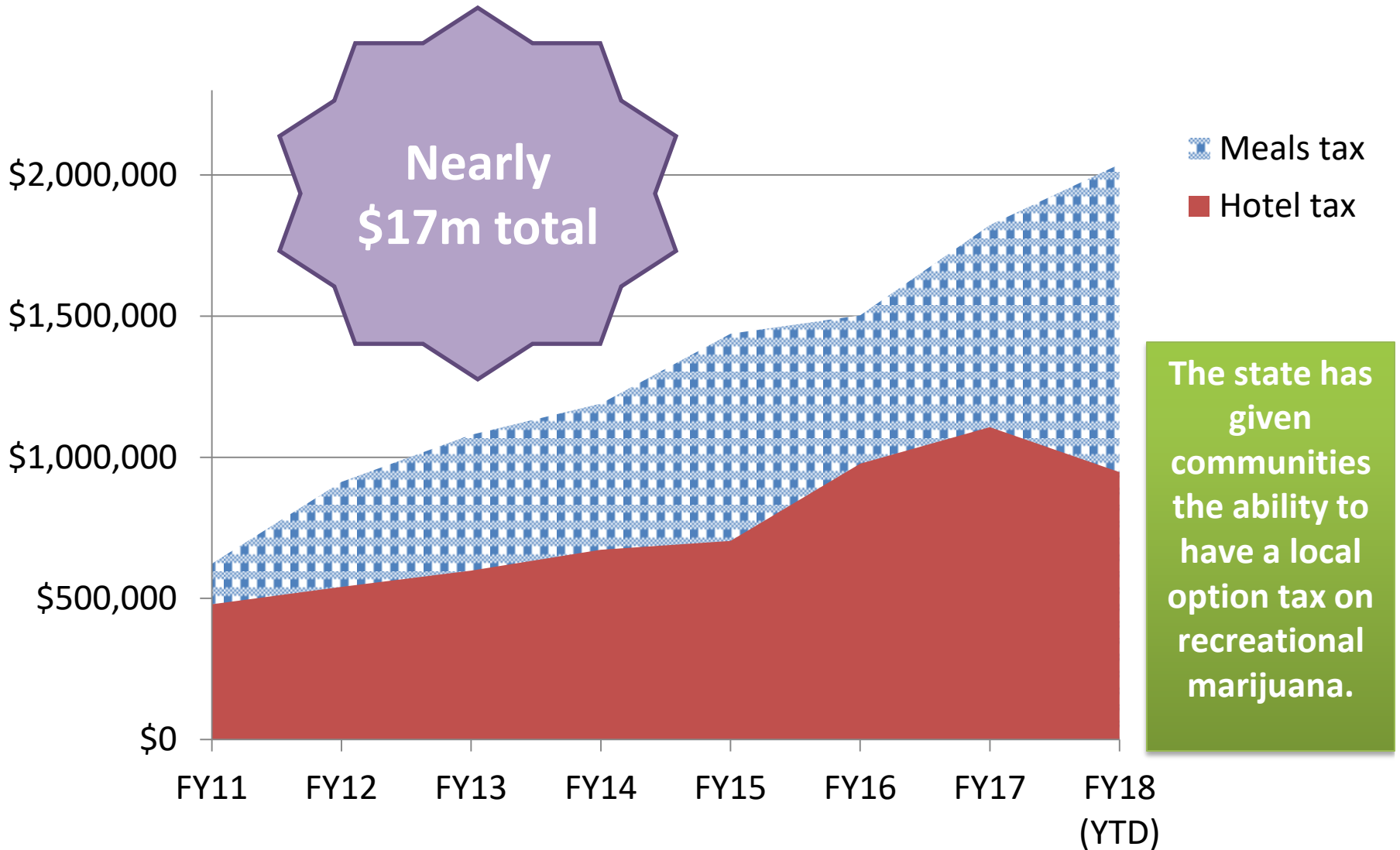


Go to budget.somervillema.gov to see a breakdown of your taxes.

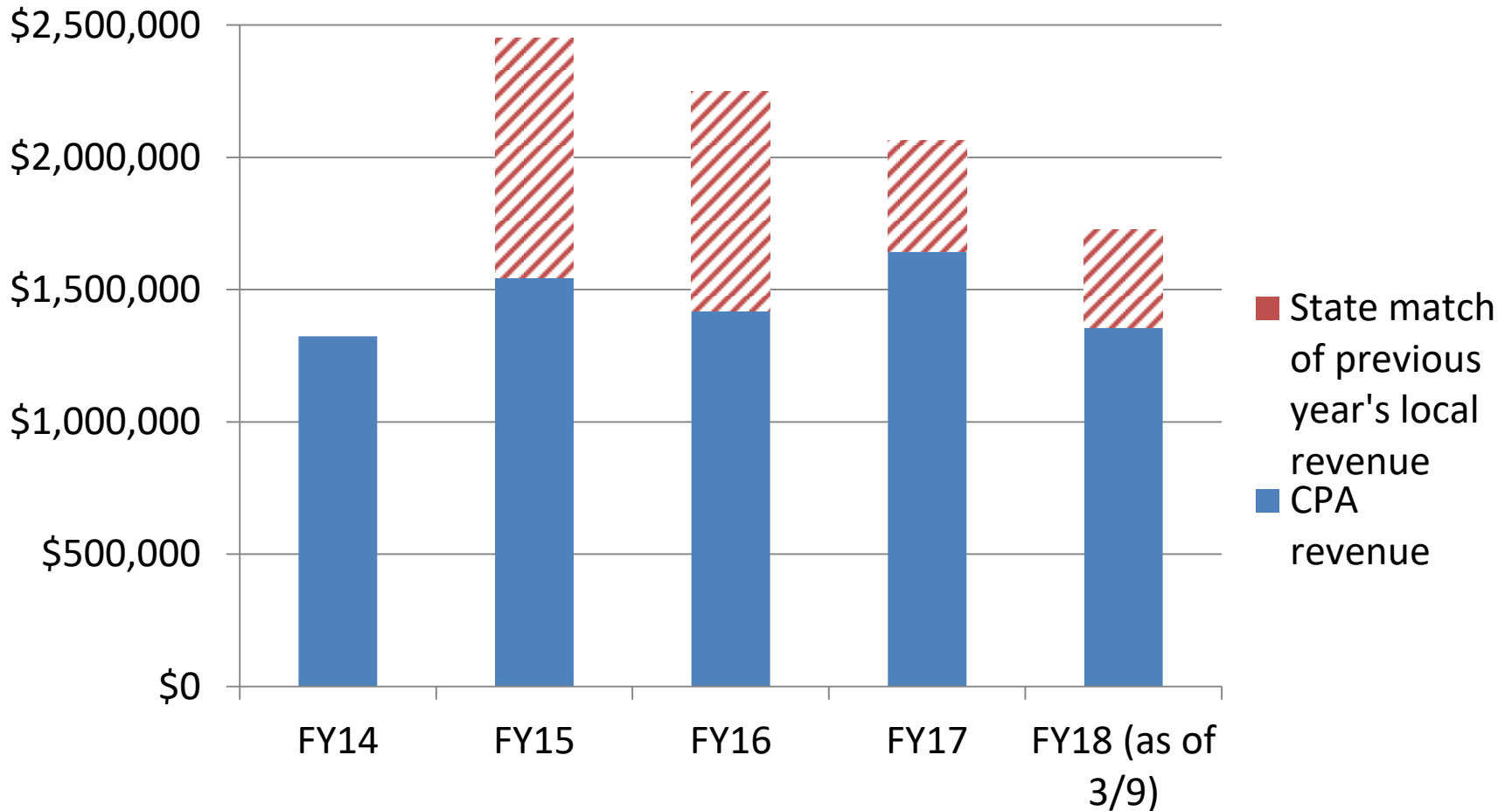
Be creative



Adopted Local Option Taxes



Overwhelming Support for the Community Preservation Act



Getting More From Development - Linkage

- A fee paid per a certain amount of square feet by a developer
- In 2017 the Board of Aldermen voted to increase the housing linkage fee and adopt a jobs linkage fee

Housing Linkage

- \$10/square foot over 30,000
- So far the City has received just under \$4 million in housing linkage payments

Jobs Linkage

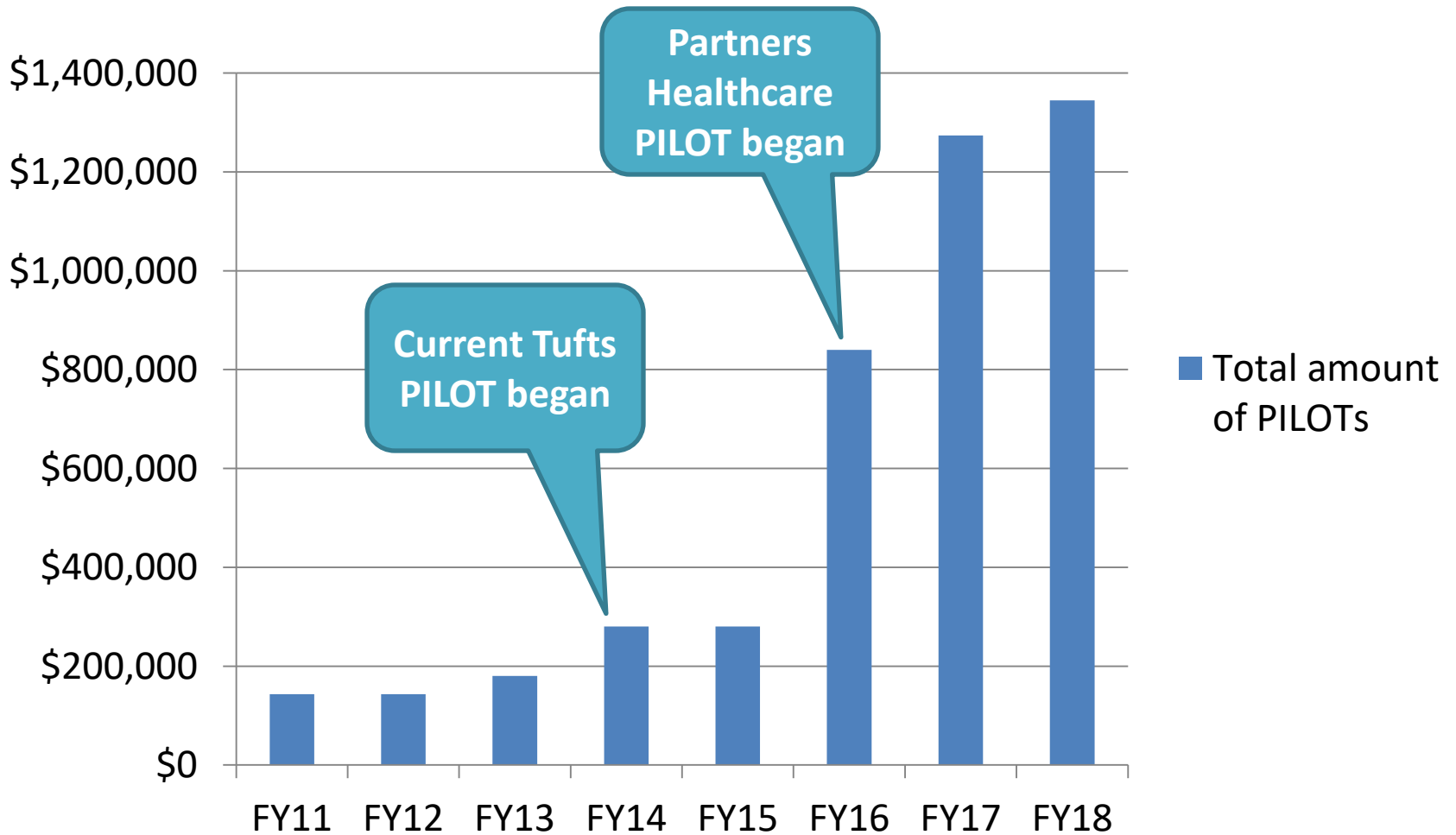
- \$2.46/square foot over 15,000
- Jobs linkage payments start coming in next fiscal year with just over \$1 million estimated to come in

Getting More From Development – Union Square Example



- US2 will make around \$112m in payments and contributions, including:
 - Green Line Extension funding
 - Infrastructure improvements
 - Jobs programs
 - Community benefits
- This in on top of adding nearly one-half billion dollars to the tax base over the next 30 years

Non-Profits Pitching In



What's Next?

- Tufts PILOT Community Forum
 - Tuesday, May 29, 6:30 p.m., West Somerville Neighborhood School
 - bit.ly/TuftsPartnershipAgreement
- Real Estate Transfer Fee on Speculation
 - somervillema.gov/transferfee



UNION SQUARE TRAFFIC SIGNALS

Early Action Overview

- Prospect Street and Webster Ave made two-way
- Concurrent pedestrian phases
- New crossing across Somerville Avenue to Union Square Plaza
- Bus/bike lane on Prospect Street
- Enhanced bicycle facilities



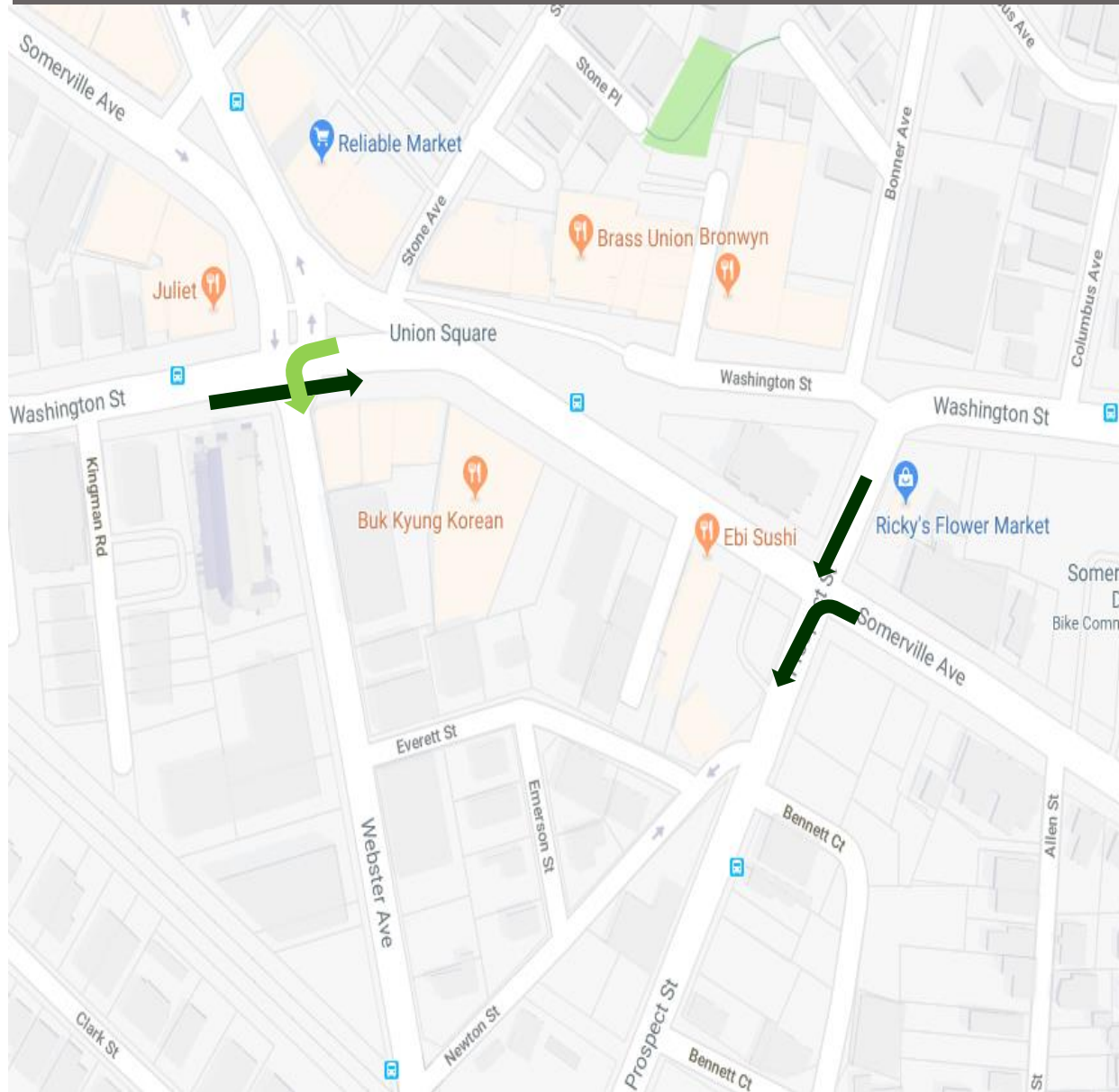
Agenda

Union Square
Traffic Signals

MBTA Service
Planning/91
Bus



Left Turns toward Cambridge



Agenda

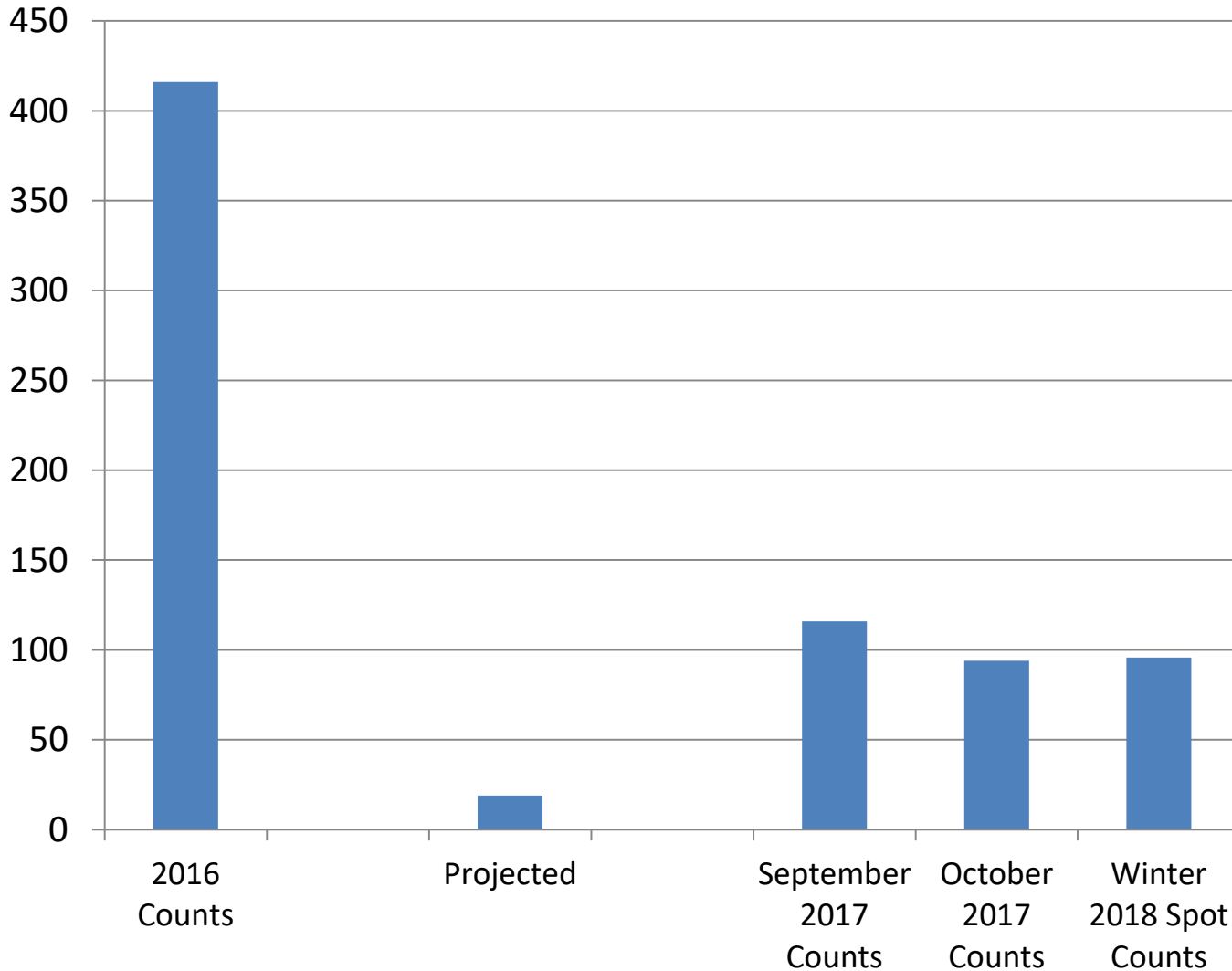
Union Square
Traffic Signals

MBTA Service
Planning/91
Bus



Left Turns toward Cambridge

Somerville Avenue WB left turns in the AM peak hour



Agenda

Union Square
Traffic Signals

MBTA Service
Planning/91
Bus



Remaining Issues

- More left turns from Somerville Ave WB to Webster Ave than anticipated
 - Time signals to encourage use of Prospect Street
- Concurrent pedestrian phase at Webster Ave not comfortable for school children/crossing guards
 - Revert to all-ped phasing



Agenda

Union Square
Traffic Signals

MBTA Service
Planning/91
Bus



MBTA SERVICE PLANNING

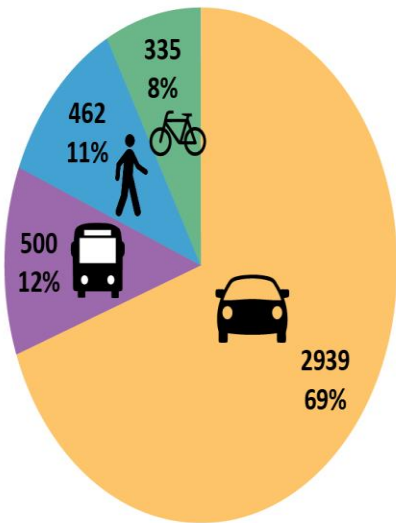
Agenda

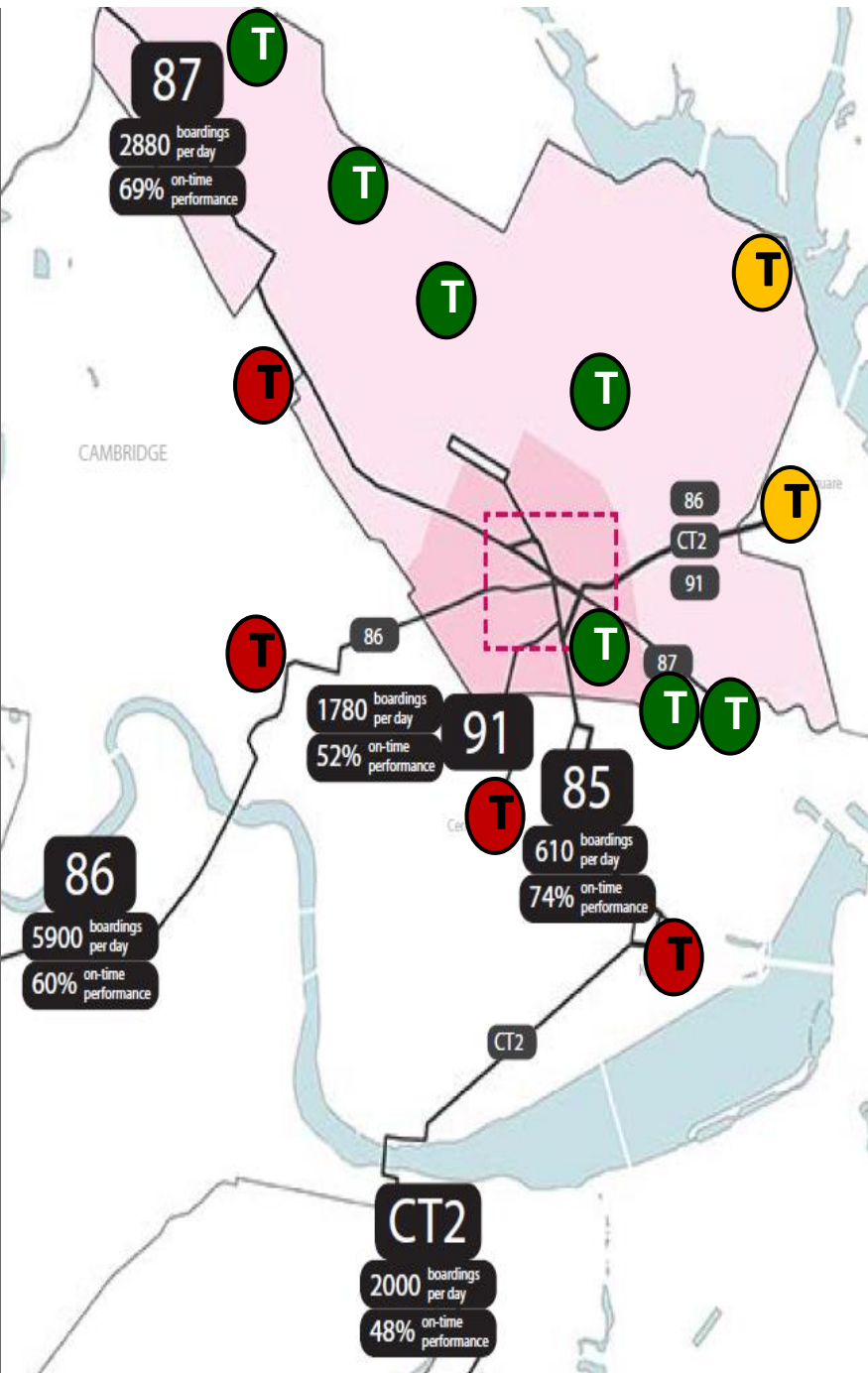
Union Square Traffic Signals

MBTA Service Planning/91 Bus



How People Enter Union Square in the Evening Peak Hour





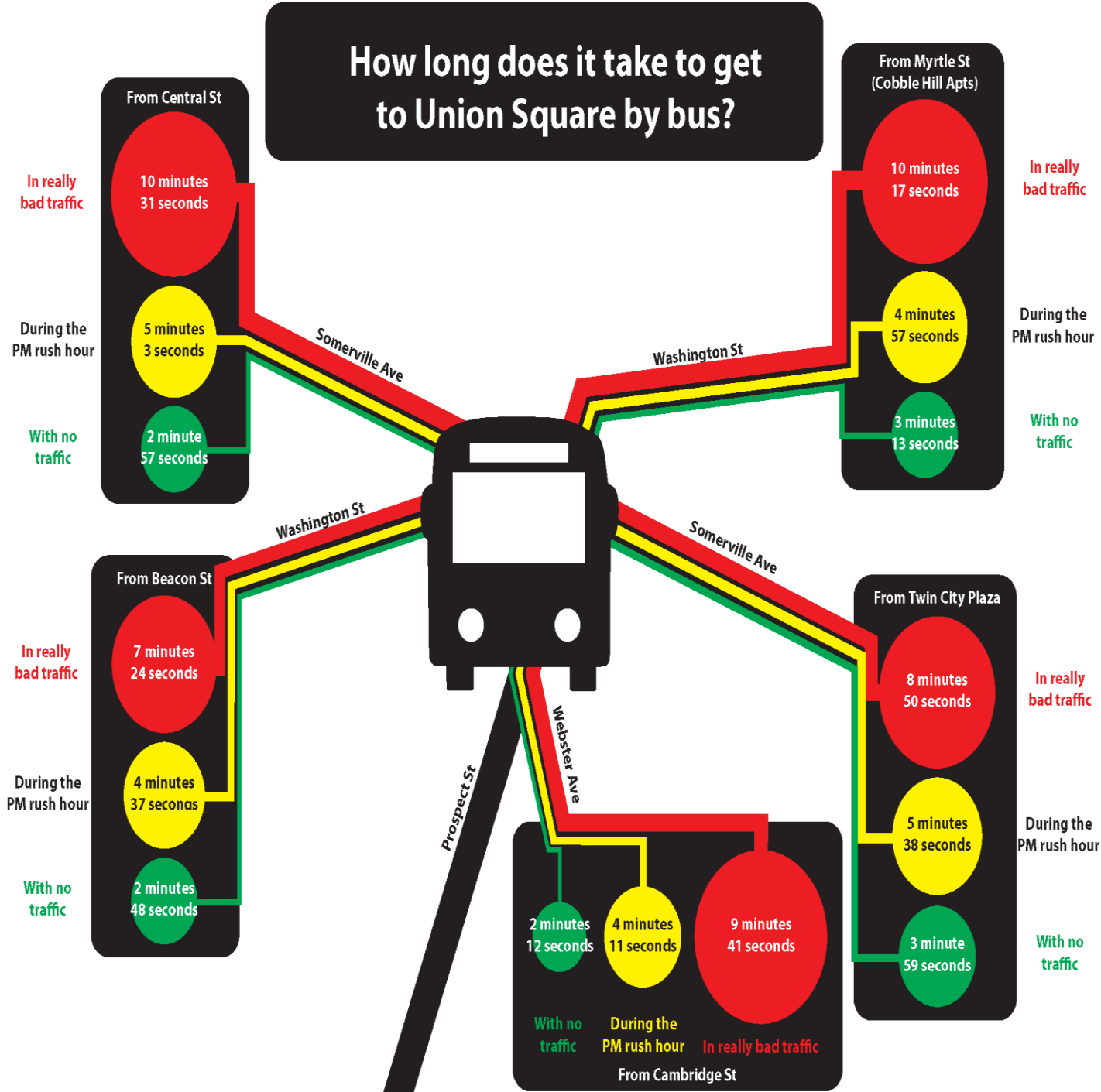
Agenda

Union Square
Traffic Signals

MBTA Service
Planning/91
Bus



How long does it take to get to Union Square by bus?

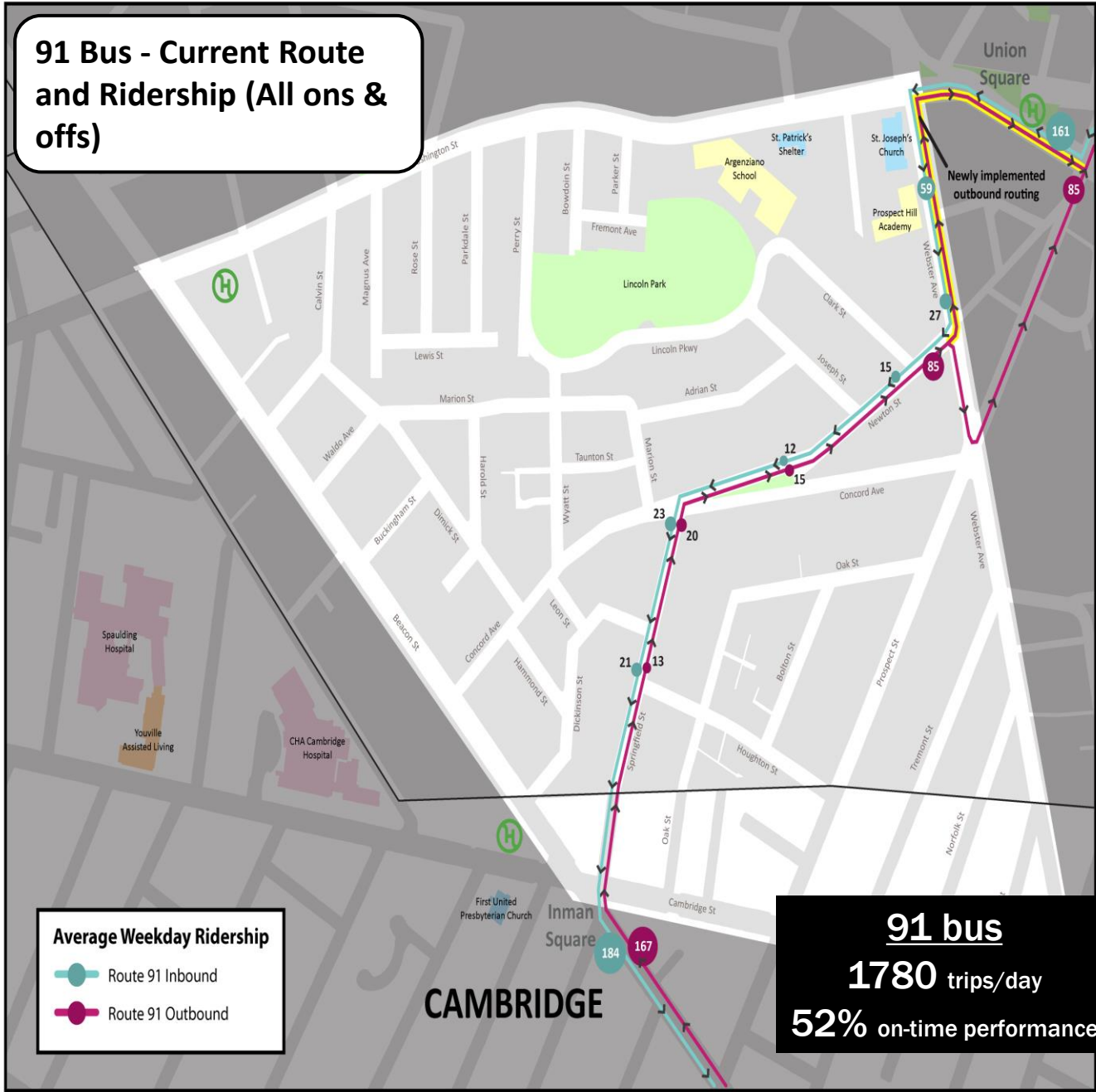


Agenda

Union Square Traffic Signals

MBTA Service Planning/91 Bus

91 Bus - Current Route and Ridership (All ons & offs)



Average Weekday Ridership

- Route 91 Inbound
- Route 91 Outbound

91 bus
1780 trips/day
52% on-time performance

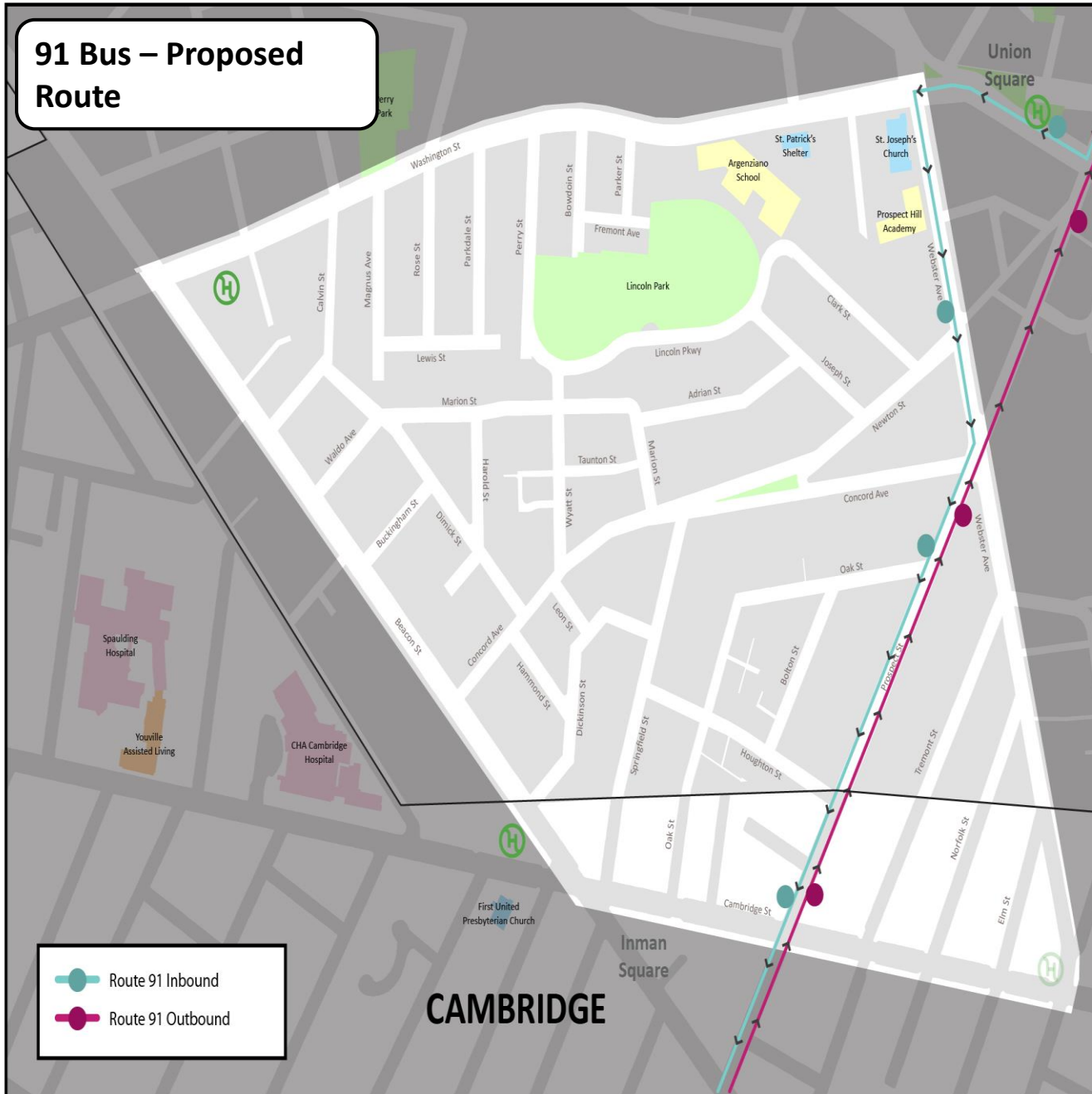
Agenda

Union Square Traffic Signals

MBTA Service Planning/91 Bus



91 Bus – Proposed Route



Agenda

Union Square
Traffic Signals

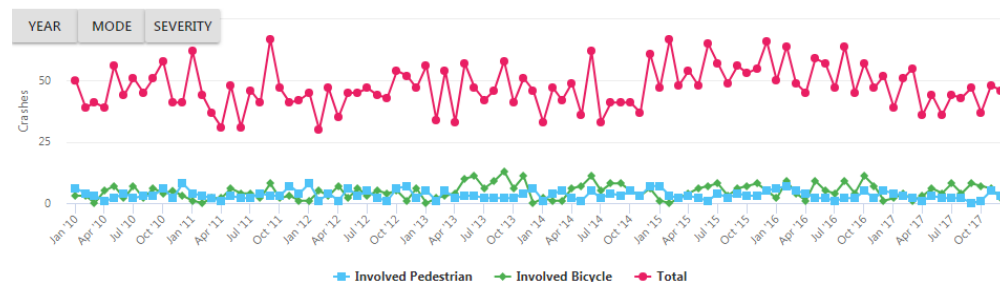
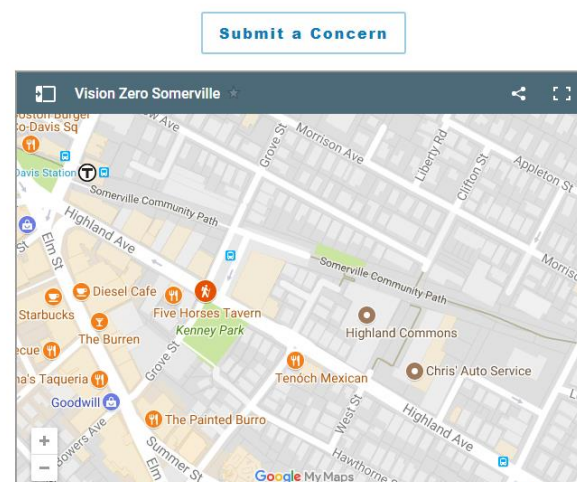
MBTA Service
Planning/91
Bus



Vision Zero



- Mayor Curtatone committed Somerville to Vision Zero last year
- City evaluating action items for Vision Zero Action Plan for targeted December 2018 publication
 - Policy changes
 - Pedestrian and Transit Committee(s)
 - Snow clearing priorities
 - 20mph speed limit, tweaked rules for bicyclists, etc.
 - Infrastructure improvement goals
 - Upgrade traffic signals citywide
 - Dedicated funding source for traffic calming
 - Specific infrastructure projects
- Public feedback
 - Go to www.somervillema.gov/visionzero to submit areas of concern
 - Look out for meetings this summer



Number of crashes by month. Click the symbol next to each category to turn it on or off. (See full visualization)

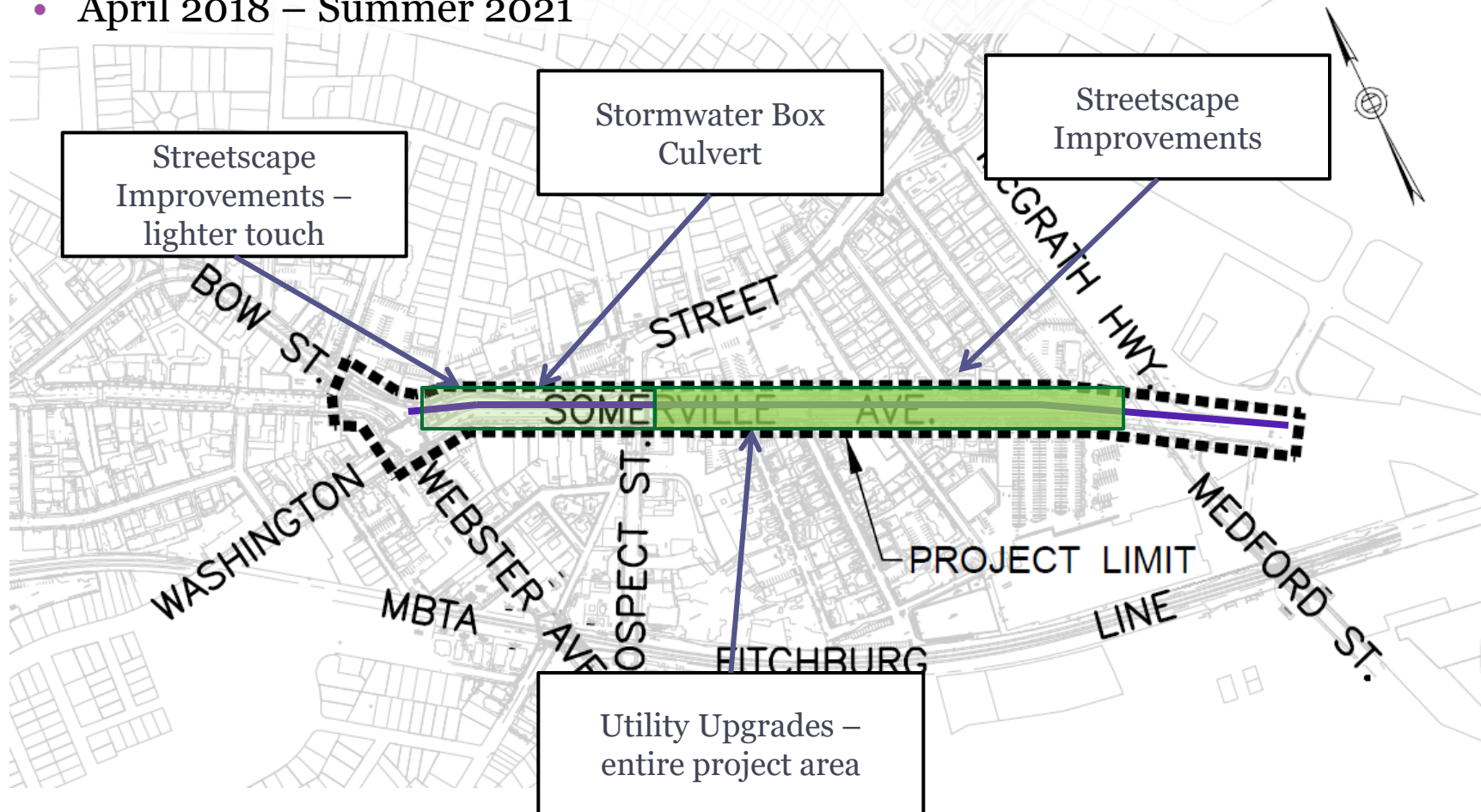
Upcoming Somerville Ave. work



Project Extents

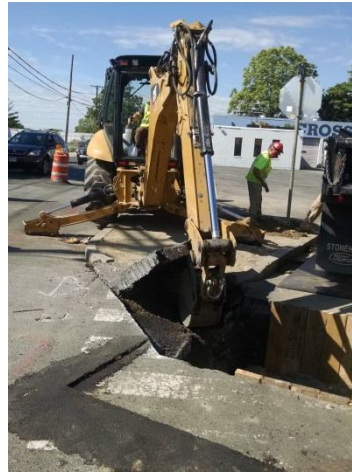
Construction timeframe:

- April 2018 – Summer 2021



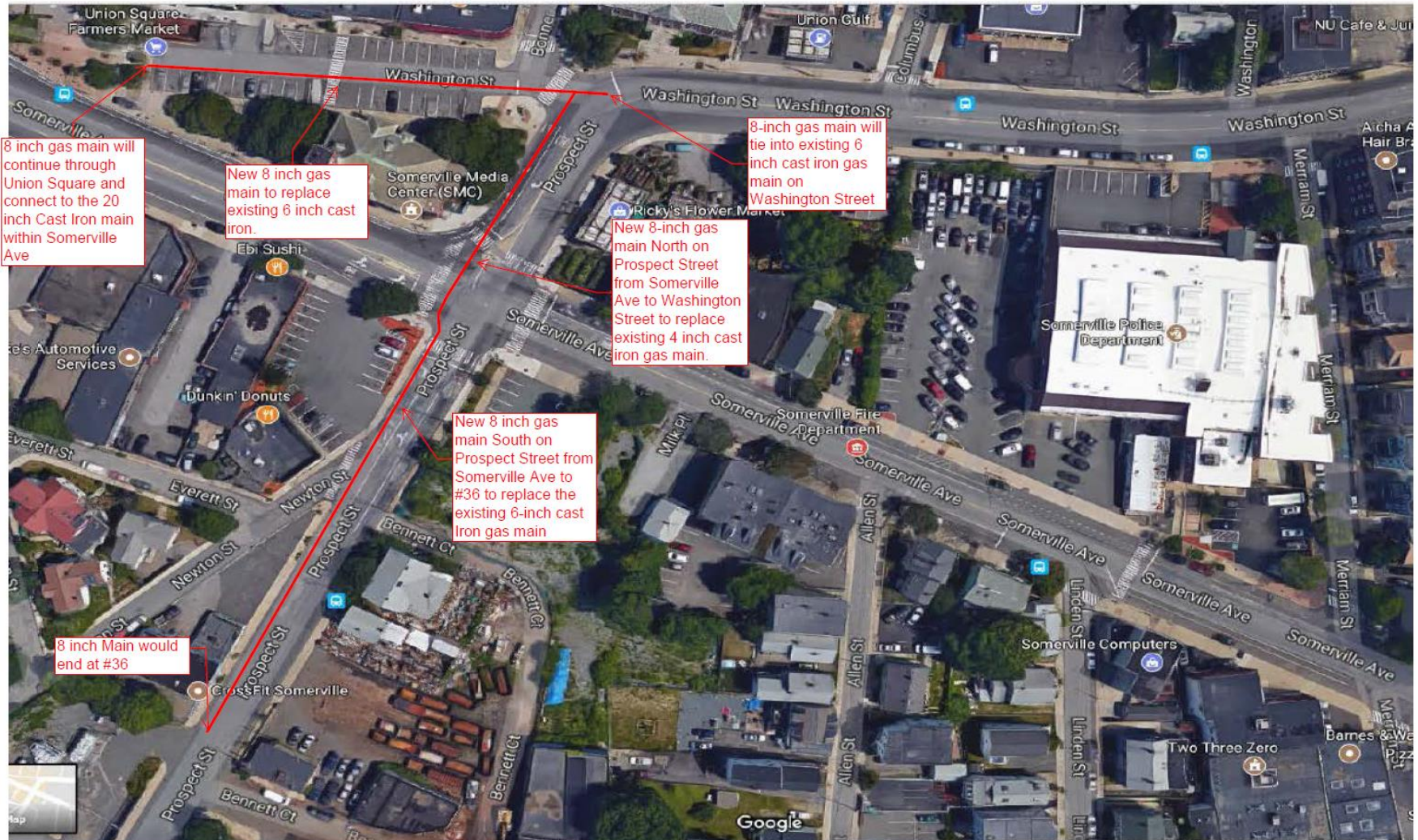
Construction Timeline 2018

- Spring/Summer work in Plaza:
 - Test pits (to locate utilities)
 - Sewer relocation
 - New water line
- Spring/Summer work elsewhere:
 - Test pits (to locate utilities)
 - Survey work and videos (surface and in sewers)
- Later in 2018:
 - Sewer lining
 - Upstream connection – heart of Union Square



Other Spring Construction Activity

- Eversource Gas – Prospect St



Project Communication

- Website:

<http://www.somervillema.gov/somervilleave>

- 3-week look aheads – sign up via website or construction@somervillema.gov
- City of Somerville Project Manager, Jess Fosbrook: 617-625-6600 ext. 5416, JFosbrook@somervillema.gov.
- City of Somerville Construction Communications, construction@somervillema.gov.
- City of Somerville Construction Liaison & Compliance Manager, Jesse Moos: JMoos@somervillema.gov, 617-625-6600 ext. 5419
- The City of Somerville's Constituent Service Center: 311 (617-666-3311), 311Updates@somervillema.gov.



**LINCOLN PARK RECONSTRUCTION:
Ribbon Cutting Summer 2018**



**SPRING '18 TREE PLANTING:
280 trees citywide, 150 in Ward 2**

Somerville High School Project Update ResiStat Meeting: Ward 2



For more information, go to:
www.somervillema.gov/highschool

May 22, 2018



SMMA

An architectural rendering of a modern, multi-story building with a prominent glass facade and a courtyard area. The building features a mix of materials, including glass, brick, and metal panels. The courtyard is populated with people, some sitting on a bench, others walking, and a person with a bicycle. The scene is set under a clear blue sky with some light clouds. The text is overlaid on the left side of the image.

Schedule

Key Dates

Upcoming Work

Construction Phasing

Bid Status

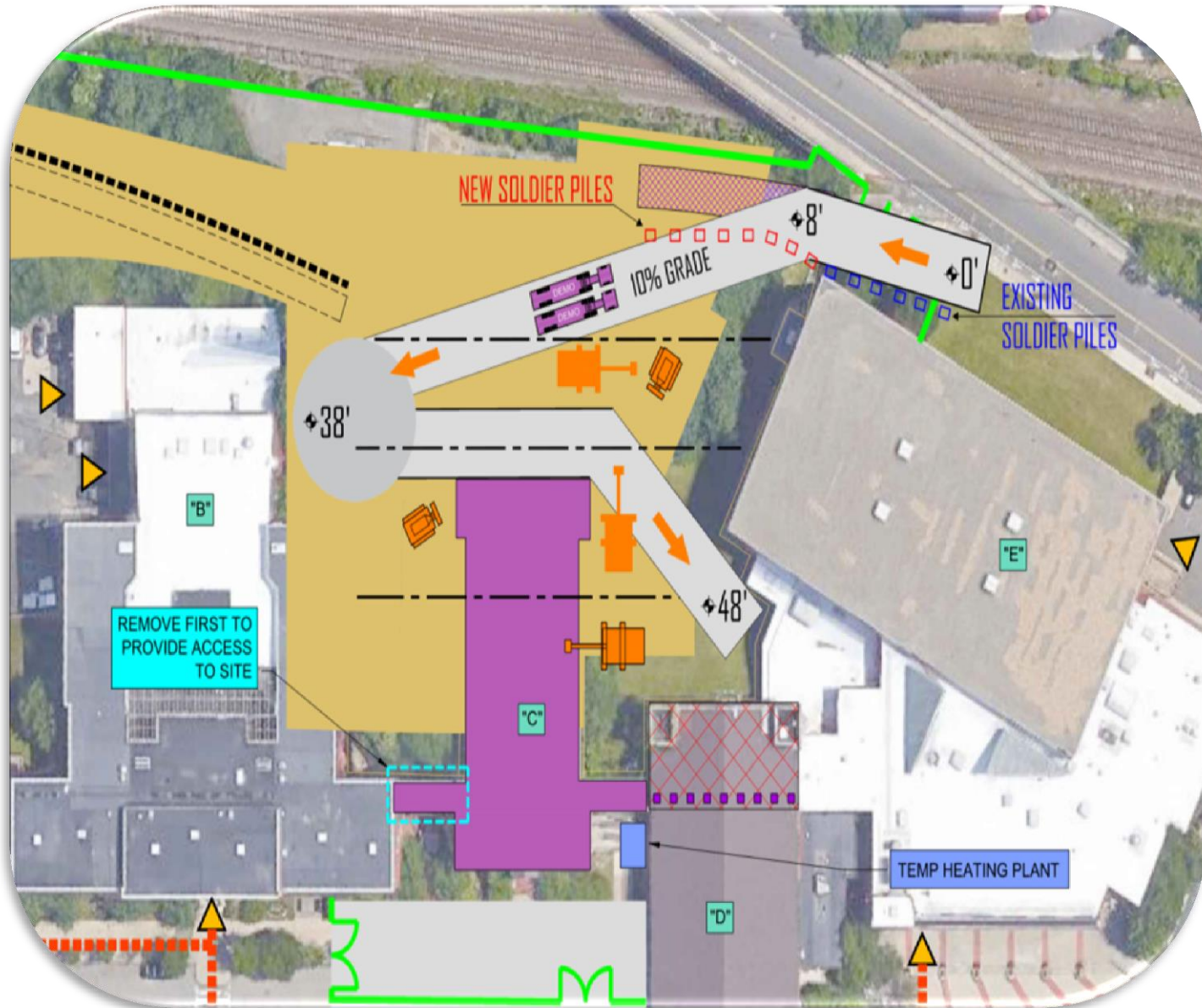
Project Design



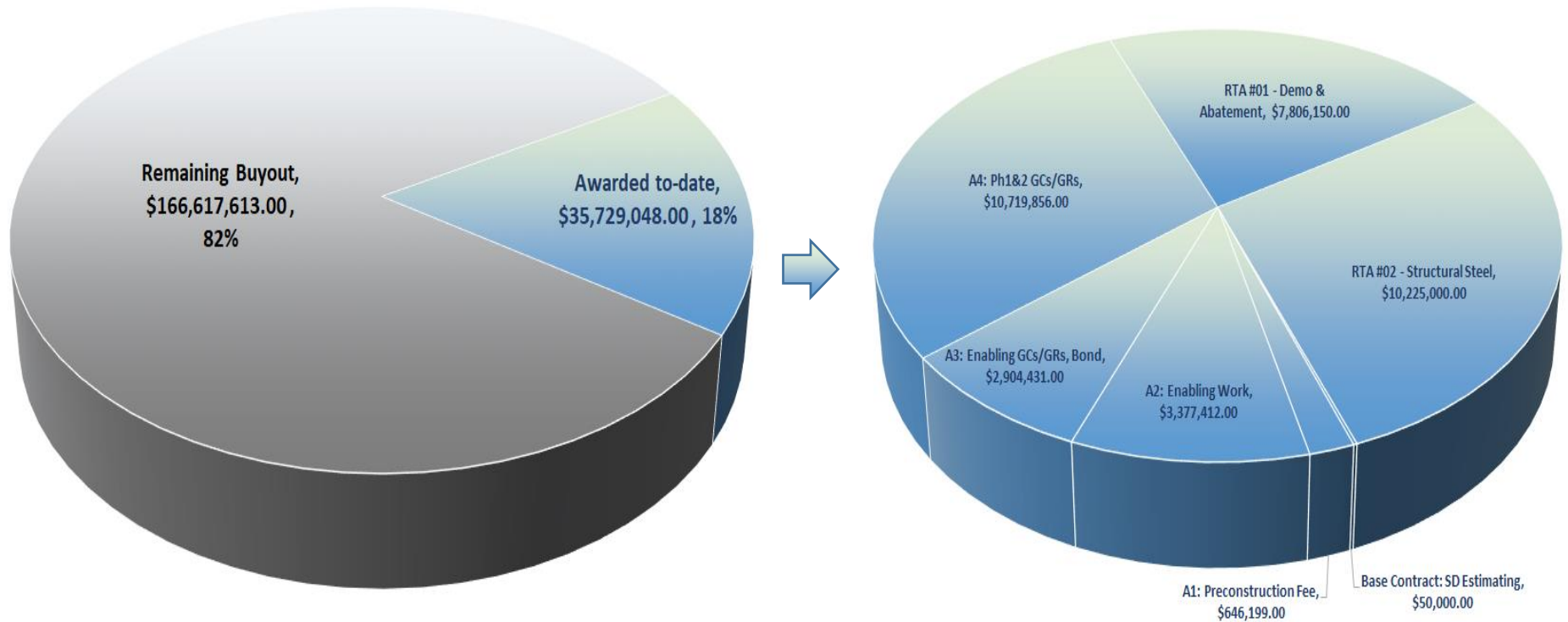
Key Dates

30 Apr 2018	100% Construction Drawing Submission to MSBA
16 Apr 2018 - 20 Apr 2018	Relocated “C Wing” Classrooms into Modular Classrooms
23 Apr 2018 - 25 June 2018	Abatement and Early Demo “C” Wing
03 May 2018 - 30 May 2018	Trade Contractor Bidding
July 2018 - August 2018	GMP Negotiation
June 2018 - Aug 2019	Phase 1 Construction (West of Gym)
May 2019 - Oct 2019	Phase 1A Construction (Shops Below Gym)
Apr 2019 - Jan 2020	Phase 1B Construction (Gym Renovations)
June 2019 - Aug 2020	Phase 2 Construction (East of Gym)
June 2019 - Jan 2020	Phase 2A Construction (War Memorial)
Aug 2020 - May 2021	Phase 3 Construction (Field)

Upcoming Work: Preparation for Phase 1



Construction Buyout Summary

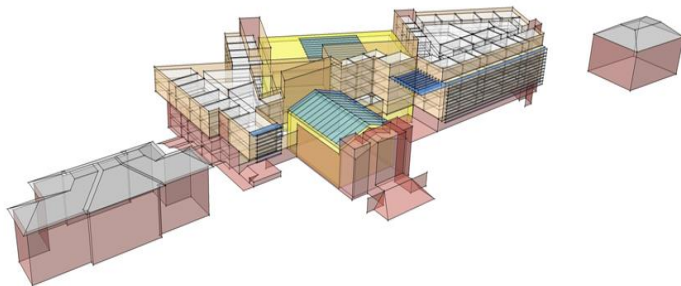


[Construction Budget:
\$202,346,661]

New Somerville High School



Highland Avenue Perspectives



School Street Perspective

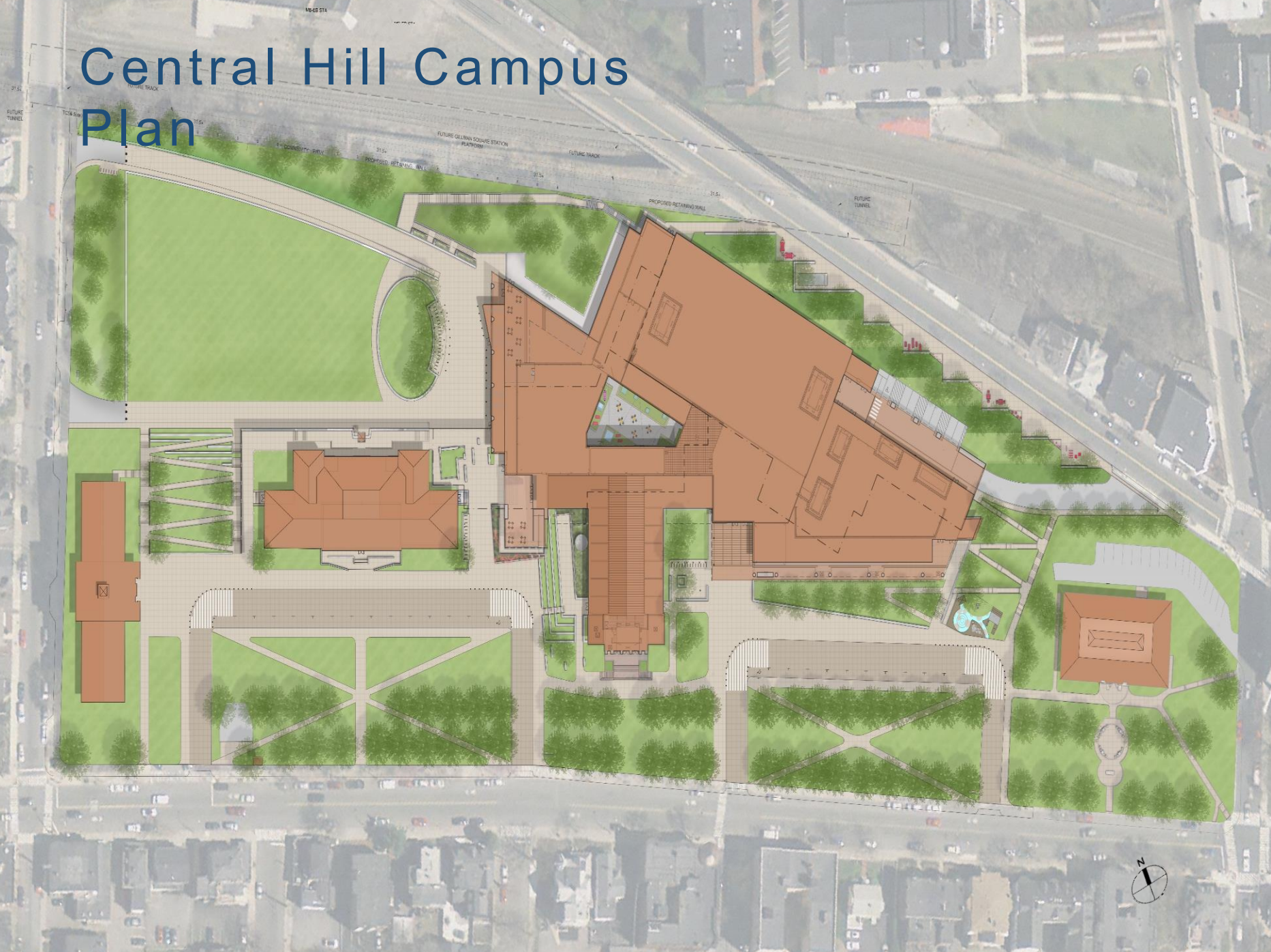


Existing



Proposed

Central Hill Campus Plan



Central Hill Campus Plan

First Public Meeting 5/31/2018

6 p.m. - High School Cafeteria

Central Library Site

City Hall Site

1895 Building Site

Transportation & Access

Playgrounds

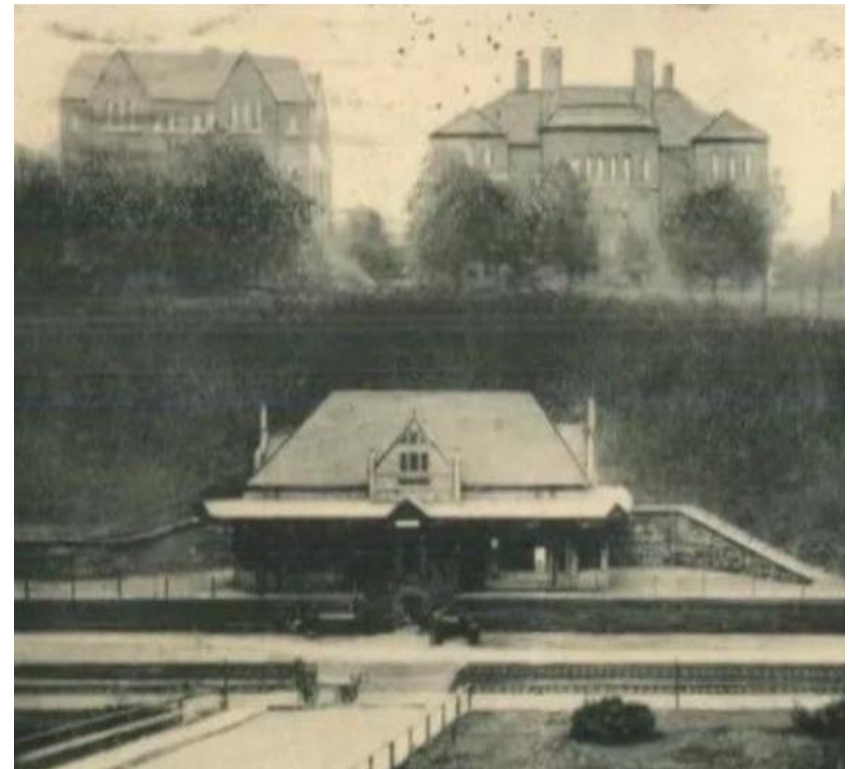
Memorials

For more information, go to:

www.somervillema.gov/centralhillplan

Uniquely Central Hill

- GLX access
- Creation of New Open Space
- Balance of Neighborhood & Civic uses



Thank You

For more information, go to:


www.somerville.ma.gov/highschool/


www.somerville.ma.gov/centralhillplan




Construction Phasing


2017					2018					2019					2020					2021					2022					2023																																																					
J	F	M	A	M	J	Jul	A	S	O	N	D	J	F	M	A	M	J	J	A	S	O	N	D	J	F	M	A	M	J	J	A	S	O	N	D	J	F	M	A	M	J	J	A	S	O	N	D	J	F	M	A	M	J	J	A	S	O	N	D	J	F	M	A	M	J	J	A	S	O	N	D	J	F	M	A	M	J	J	A	S	O	N	D


12-Jun-17 A  25-Dec-17 A, Modular Classroom Procurement

26-Dec-17 A  13-Apr-18 A, Modular Classroom Constructon (16 Weeks)


16-Apr-18 A | 20-Apr-18 A, Relocate Students to Modular Classrooms (Apr Vacation)


23-Apr-18 A  25-Jun-18, Early Demo & Abatement


26-Jun-18  02-Aug-19, Phase 1 - New Construction West of Gym

08-Jul-19  30-Aug-19, Phase 1 - Commissioning, FF&E, IT, Move, Punchlist


01-May-19* | 03-May-19, Phase 1A - Move Students Out


06-May-19  27-Sep-19, Phase 1A - Construction

16-Sep-19  11-Oct-19, Phase 1A - Commissioning, Punchlist

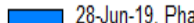
14-Oct-19  25-Oct-19, Phase 1A - FF&E, IT, Move

16-Apr-19* | 16-Apr-19, Phase 1B - Move Students Out


17-Apr-19  03-Jan-20, Phase 1B - Construction


23-Dec-19  17-Jan-20, Phase 1B - Commissioning, Punchlist


20-Jan-20 | 24-Jan-20, Phase 1B - FF&E, IT, Move

15-Apr-19*  28-Jun-19, Phase 2 - Early Enabling Work (Begin April Vacation)


01-Jul-19 | 05-Jul-19, Phase 2 - Move Students Out


08-Jul-19  31-Jul-20, Phase 2 - New Construction East of Gym


22-Jun-20  14-Aug-20, Phase 2 - Commissioning, Punchlist


17-Aug-20  31-Aug-20, Phase 2 - FF&E, IT, Move

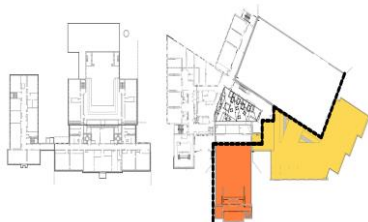
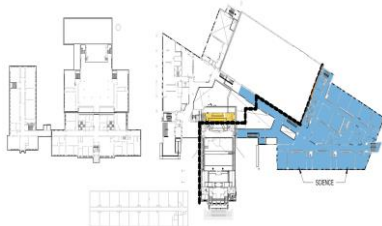
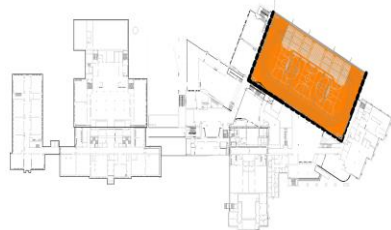
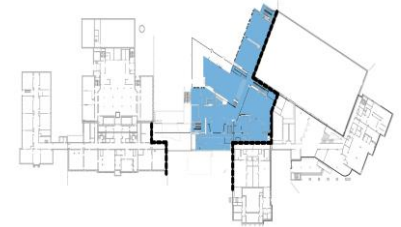
01-Jul-19* | 05-Jul-19, Phase 2A - Move Students Out

08-Jul-19  03-Jan-20, Phase 2A - Construction (War Memorial)

25-Nov-19  17-Jan-20, Phase 2A - Commissioning, Punchlist

20-Jan-20  31-Jan-20, Phase 2A - FF&E, IT, Move

03-Aug-20  28-May-21, Phase 3 - Demo West & Rear 1929 Wing, Construct Field





ResiStat Ward 2: Police
May 22, 2018



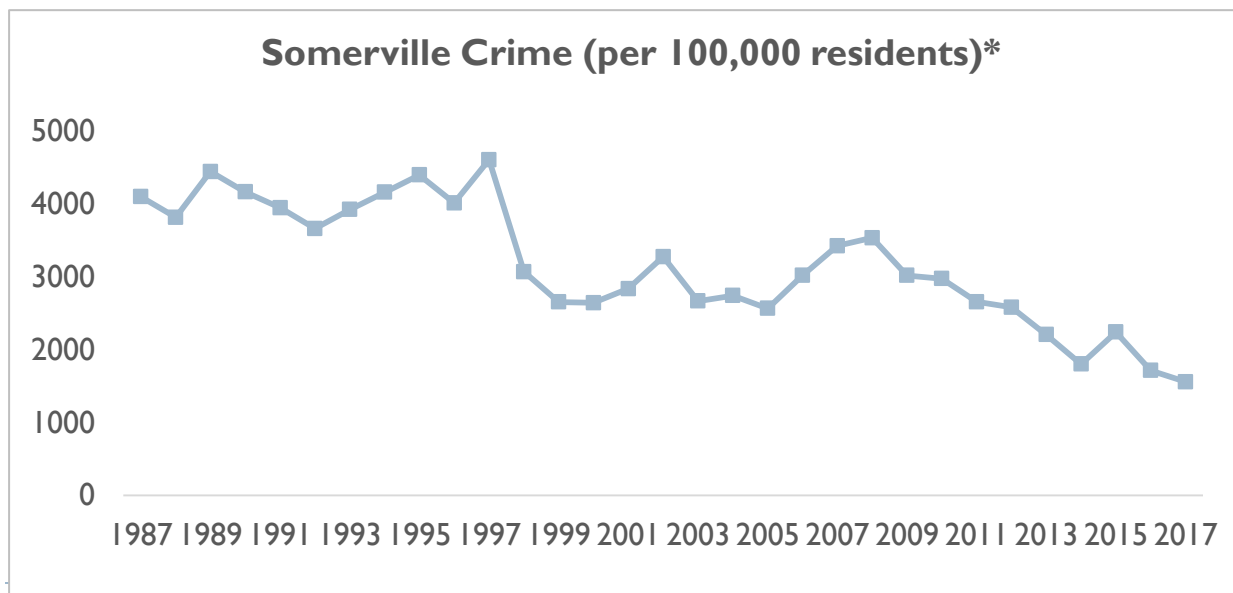
Chief David Fallon



Ward 2: Select Crime (5/1/17 – 4/30/18)

Trends

- Citywide, crime is **down 11%** vs. 2016
 - 2017 was a 30-year citywide low, a **62% decrease** vs. 1987
- Ward 2: Over the past 12 months, crimes that frequently impact residents have **decreased 20%**.



*Part I Crime, FBI Reporting, 1985-2017 (2015-2017 = Estimate)



Ward 2: Select Crime (Year-to-Date)

Car Breaks

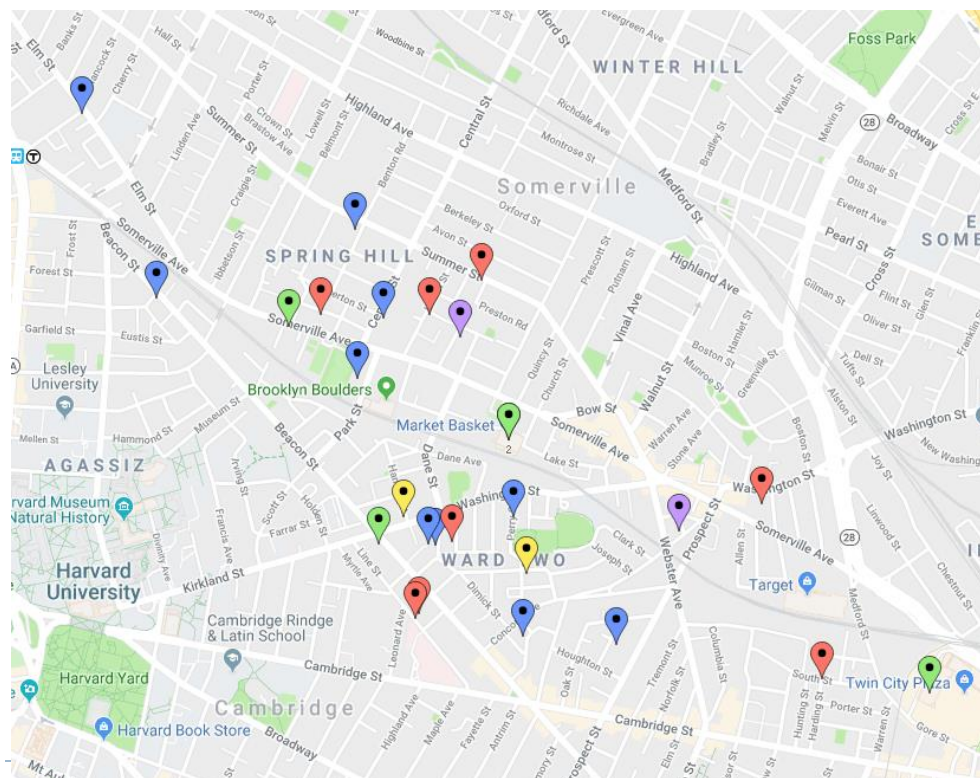
- Always lock your vehicle

Residential Burglary

- Lock deadbolts (not just door knob); Double-secure windows (lock + safety tabs, wooden dowel or wood screws)
- Ensure motion lights work
- Keep climbable objects away from windows
- Register, add tracking software to electronics
- Home security systems an affordable option

Package Theft

- Deliver when you'll be home; require signature
- Deliver to the side or back of the house
- Deliver to the office

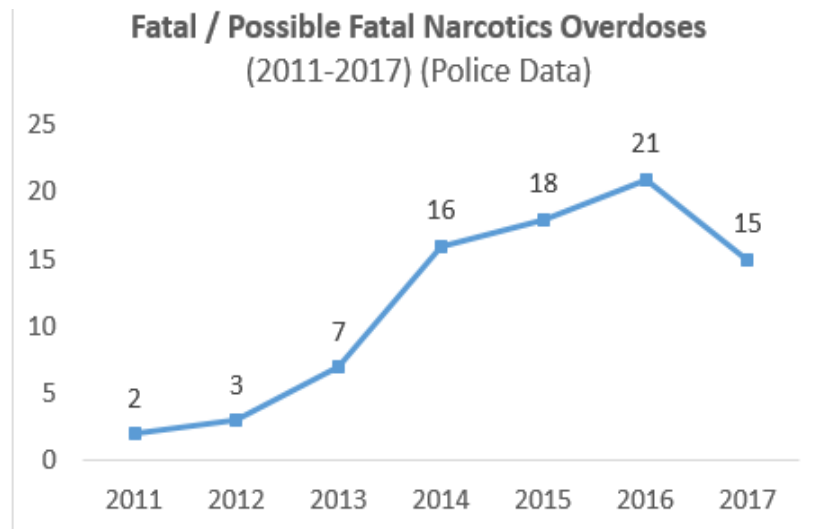




Substance Misuse & Mental Health

- Office of Community Outreach, Help & Recovery (**COHR**)
 - Assist those with addiction or mental health issues by connecting to services & developing self-care strategies

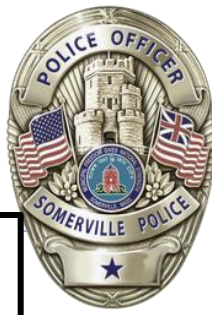
- Fatal ODs down 29% from 2016
 - In the vast majority of fatal ODs, it is too late for Narcan use by first responders
- In 2017, the Somerville first responders were dispatched to 782 calls involving alcohol, down from 902 calls in 2016



- Continue to see an increase in mental health calls
 - SPD received 98% more mental health calls in 2017 compared to 2012.
 - In 2017, SPD responded to more mental health crises than robberies and assaults combined.



Community Outreach, Help & Recovery



Community Training

Three in-house Trainers conduct:

- ▶ Recovery Coach Academy
- ▶ Mental Health First Aid
- ▶ Youth Mental Health First Aid
- ▶ Forums to address trend data

Take Back Day

- ▶ Initiative in partnership with HHS
- ▶ This yr recovered 288 lbs of medication

Hours of Operation:

M-F, 08:00-17:00

Community Outreach & Follow Up

Jail Diversion Program
(DMH Grant Funded)

- ▶ Contact 40 individuals per month on avg

- ▶ *Licensed Drug & Alcohol Counselor*
- ▶ *Program Coordinator*
(80% Grant funded)

Internship Programs

- ▶ Graduate and Fellow level
- ▶ *Recovery Coach Intern* (PAARI funded)
- ▶ *Teen Empowerment MSW Intern*

- ▶ Officers identify opportunities for service use, COHR provides outreach via phone as well as community/home visits. If appropriate, Diversion Program offered in collaboration with Officers.

MB CITTTAC

Regional Training Center DMH Grant Funding

**Increased from \$89,506 in 2016 to \$256,370 in 2017*

Regional CIT Training

- ▶ Approximately 22 Police agencies from Boston to Lowell to Weston & expanding

New: Coordinator of Law Enforcement Partnerships

- ▶ Focuses on Implementation of CIT with partners

New: Co-Director, Clinician

- ▶ Supervises Project Assistant and facilitates CIT – also assists with SPD outreach

Project Assistant

- ▶ Organizes training and registration
- ▶ MB CIT website



Substance Misuse & Mental Health Supports

➤ Substance Misuse

Contact	Service	Contact Info.
MA Substance Use Hotline	Treatment program info	800-327-5050
Cambridge Health Alliance	Walk-ins Tue. 11:30; MA Health accepted	617-591-6051
Caspar First Step Outreach	Assist in accessing detox.	617-661-0600
Riverside Community Care	Outpatient; MA Health accepted	617-623-3278
North Charles	Maintenance therapy; MA Health only	617-661-5700
Column Health	Counseling, medication assisted treatment	339-368-7696
Learn 2 Cope	Family support; Mon. 7 PM	1575 Cambridge St, CAM
Family Anonymous	Family support; Tue. 7 PM	121 Washington St, MEF

➤ Mental Health

Contact	Service	Contact Info.
Cambridge Health Alliance	Inpatient & outpatient services	Adults: 617-591-6033 Juveniles: 617-665-3458
BEST Team	Psychiatric emergency services; MA Health	800-981-4357
Riverside – Child Guidance Center	Juvenile/family services	617-354-2275
Neighborhood Counseling & Community Services	Counseling, skill & strength-based strategies	781-600-6074

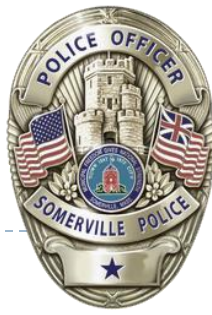


Police/Community Relations

- General Community Engagement increased 1150% from 2012 to 2017
 - 7 Walking Dialogues: Summer dates coming soon
 - 49 Community Meetings YTD
 - 1268 Citizen Contacts YTD
- STEPS Update
 - Over 700 visits to 6th-8th grades School-YTD
 - Average visit = 45 minutes
 - Next year, the first STEPS class will begin high school. Another class of 6th graders will join the program along with 5 new volunteer Officers
- Junior Police Academy
 - Organized by Police, Recreation
 - Physical fitness, first aid, teamwork.
 - Summer 2018 expansion:
 - Addition of a second one-week program
 - More students per program
 - Addition of a fire safety day



Procedural Justice



- Continual emphasis on...
 - **Fairness** in the process
 - **Transparency** in actions
 - Opportunities for **voice**
 - **Impartiality** in decision making
- Department-wide training
 - Completed Impartial Policing (2016-17)
 - Completed Procedural Justice & Legitimacy (2017-18)
- Technology
 - All policies & procedures online & searchable on department website
- Related focus on officer wellness
 - Critical Incident Stress Management (CISM) team
 - Peer support
 - Emphasis on training

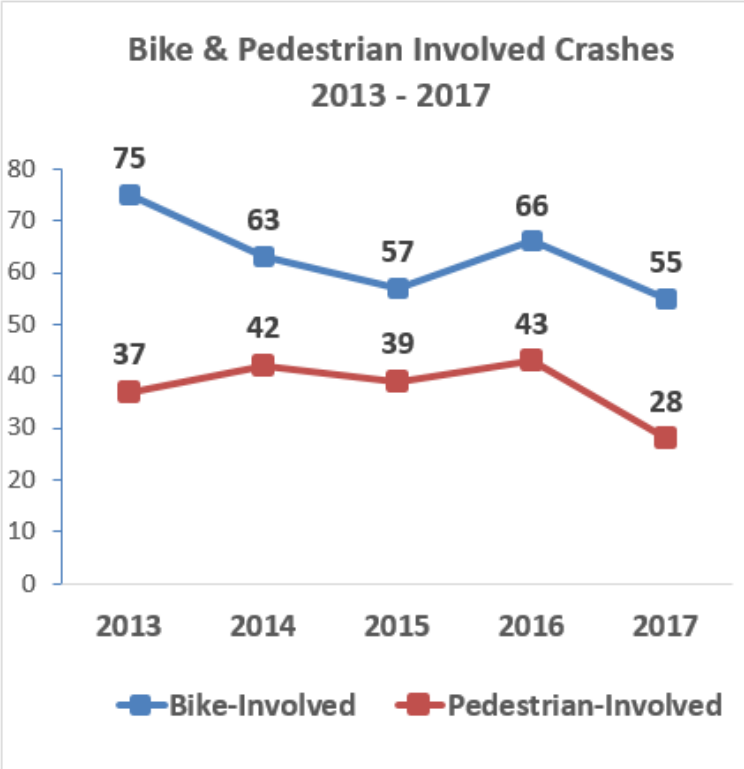
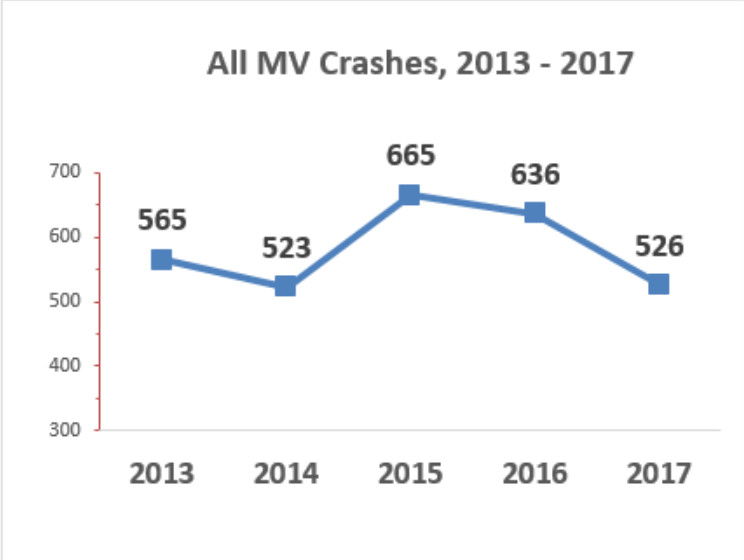


City-Wide MV Crashes

All users of roadways, including bicyclists, pedestrians and motorists, possess the same rights, deserve the same respect, and equally share the responsibility of keeping our roads safe. SPD enforces the rules of the road equally as covered in MGL c.90 § 14.

2017 vs 2016:

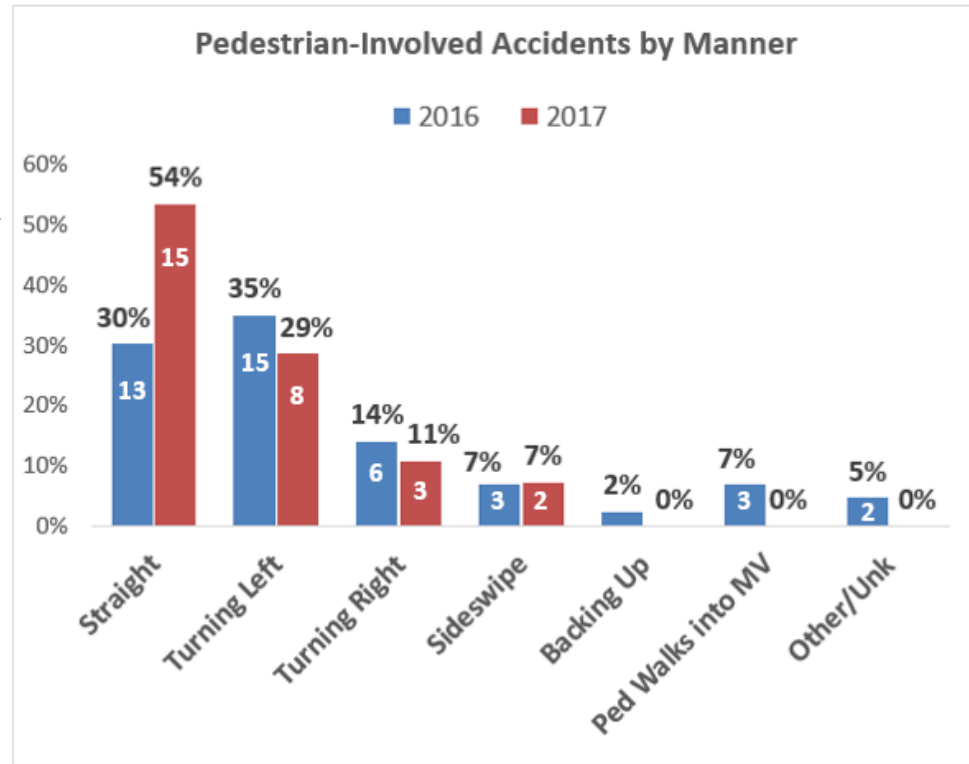
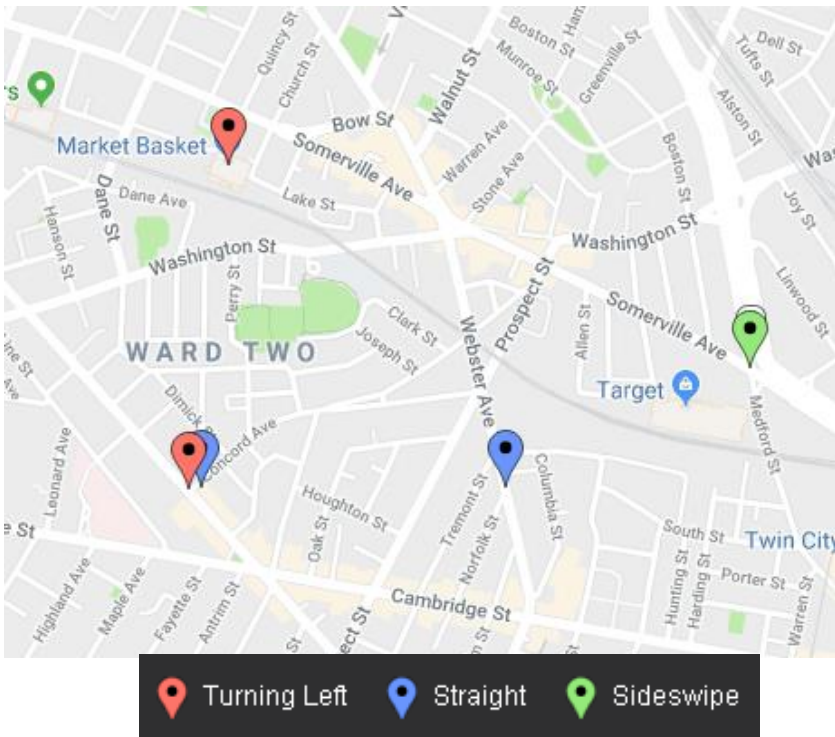
- ▶ **Total MV-only crashes decreased 16%**
- ▶ **Bike-involved crashes decreased 17%**
- ▶ **Pedestrian-involved crashes decreased 35%**
- ▶ **0 fatalities**



Pedestrian-Involved Crashes

Wards 2 Pedestrian Area of Concern:

- ▶ No patterns present. However, SPD will monitor Beacon St & Concord Ave in particular.



Manner of Crash: City-wide

- ▶ In 54% of all pedestrian-involved crashes in 2017 the MV drove straight into a crossing pedestrian
- ▶ The next most frequent: MV Turning left

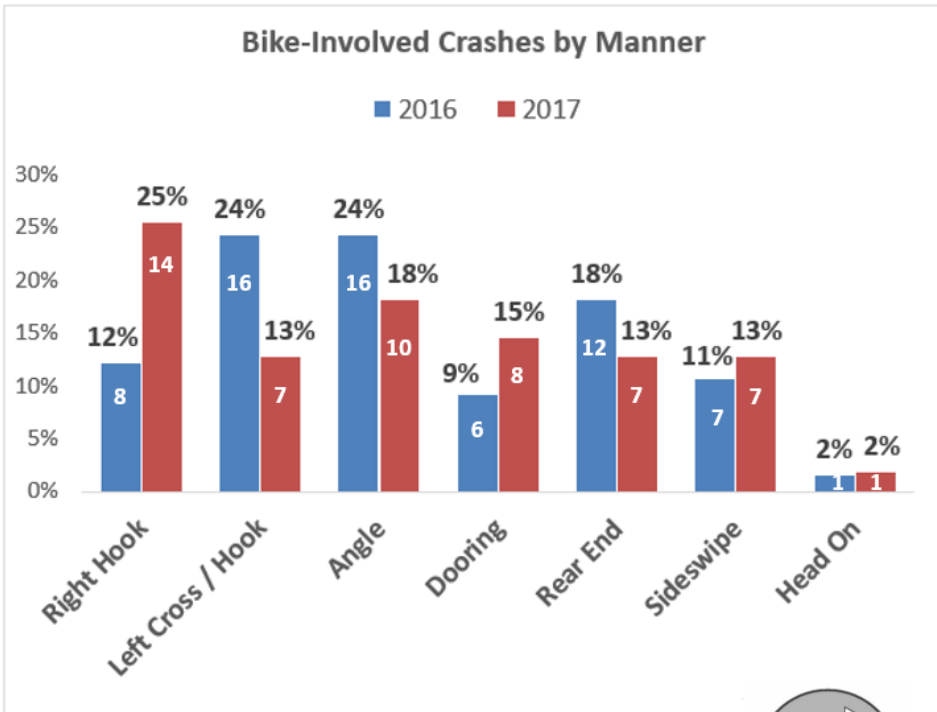
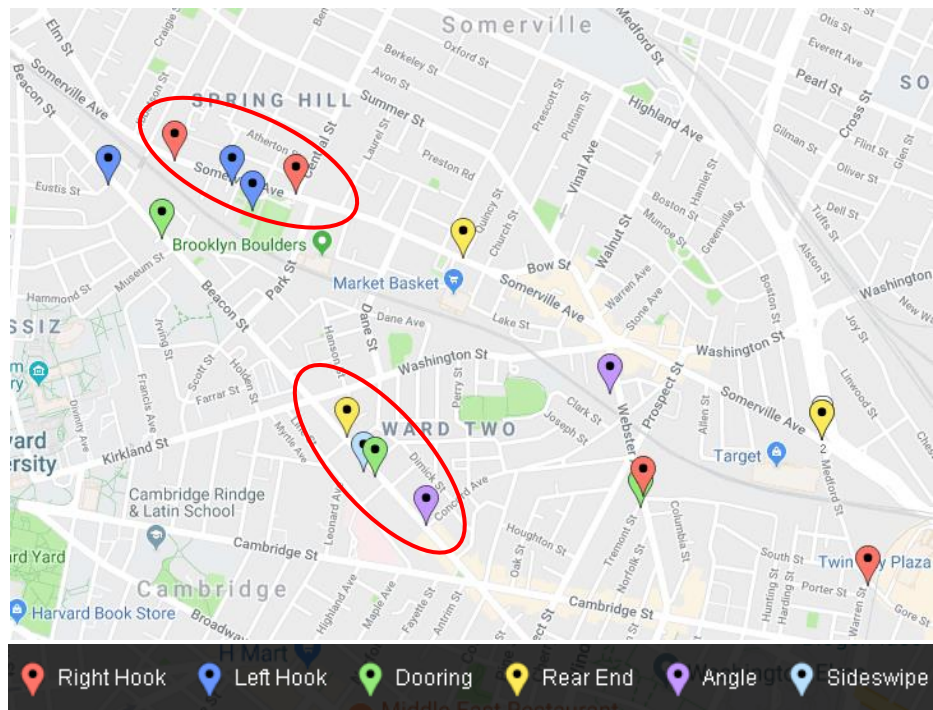
Location

- ▶ In 46% of crashes, pedestrian was in a crosswalk
- ▶ In 36%, pedestrian was in the roadway (non-intersection & no crosswalk)



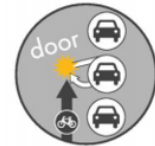
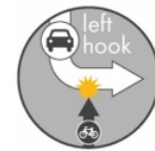
Bike-Involved Crashes

Ward 2 Bike Areas to Monitor:



Manner of Crash: City-Wide

- ▶ **“Right Hooks” doubled**
- ▶ **“Left Hooks” cut by half**
- ▶ **Increase in “Dooring” incidents**



Even though number of pedestrian and bike-involved accidents has significantly declined, SPD is partnering with Traffic & Infrastructure to identify possible improvements in problem intersections and corridors.



Thank you

For questions related, to crime statistics, please email
crimeanalysis@police.Somerville.ma.us.



CITY PREPARATION FOR GLX CONSTRUCTION



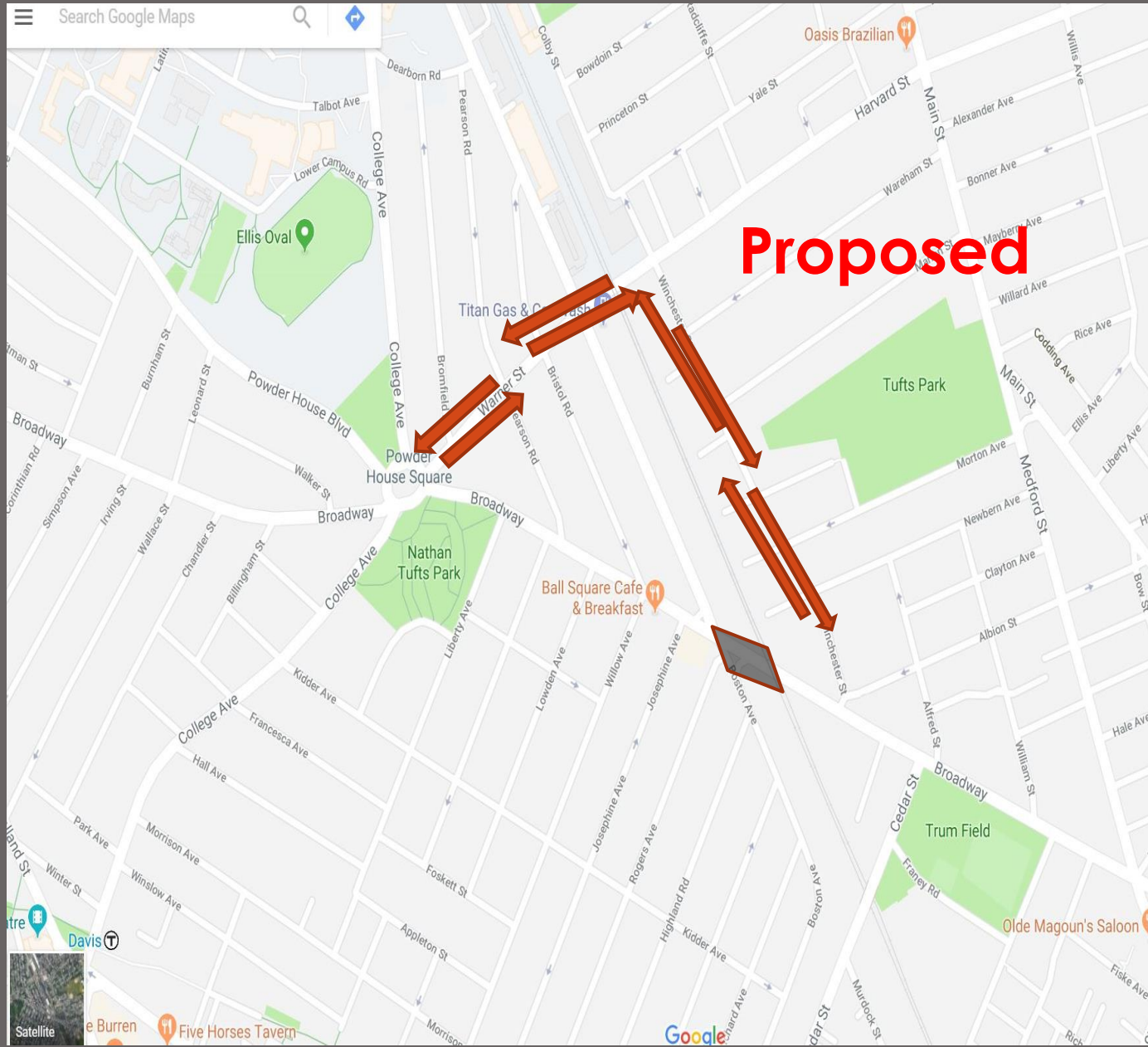
Ball Square Bridge: July 2015

MBTA Green
Line

OUR STRATEGIES

Detour
Planning
Emergency
Response
Business
Support
Public Space
Bus
Modification
Pest
Management

Primary Detour Route Proposed by GLX Constructors



MBTA Green
Line

OUR STRATEGIES

Detour
Planning

Emergency
Response

Business
Support

Public Space

Bus
Modification

Pest
Management

**DETOUR
AHEAD**

MBTA Green
Line

**OUR
STRATEGIES**

Detour
Planning

Emergency
Response

Business
Support

Public Space

Bus
Modification

Pest
Management

Improve Safety / Organize Movements at Winchester / Albion

MBTA Green Line

OUR STRATEGIES

Detour Planning

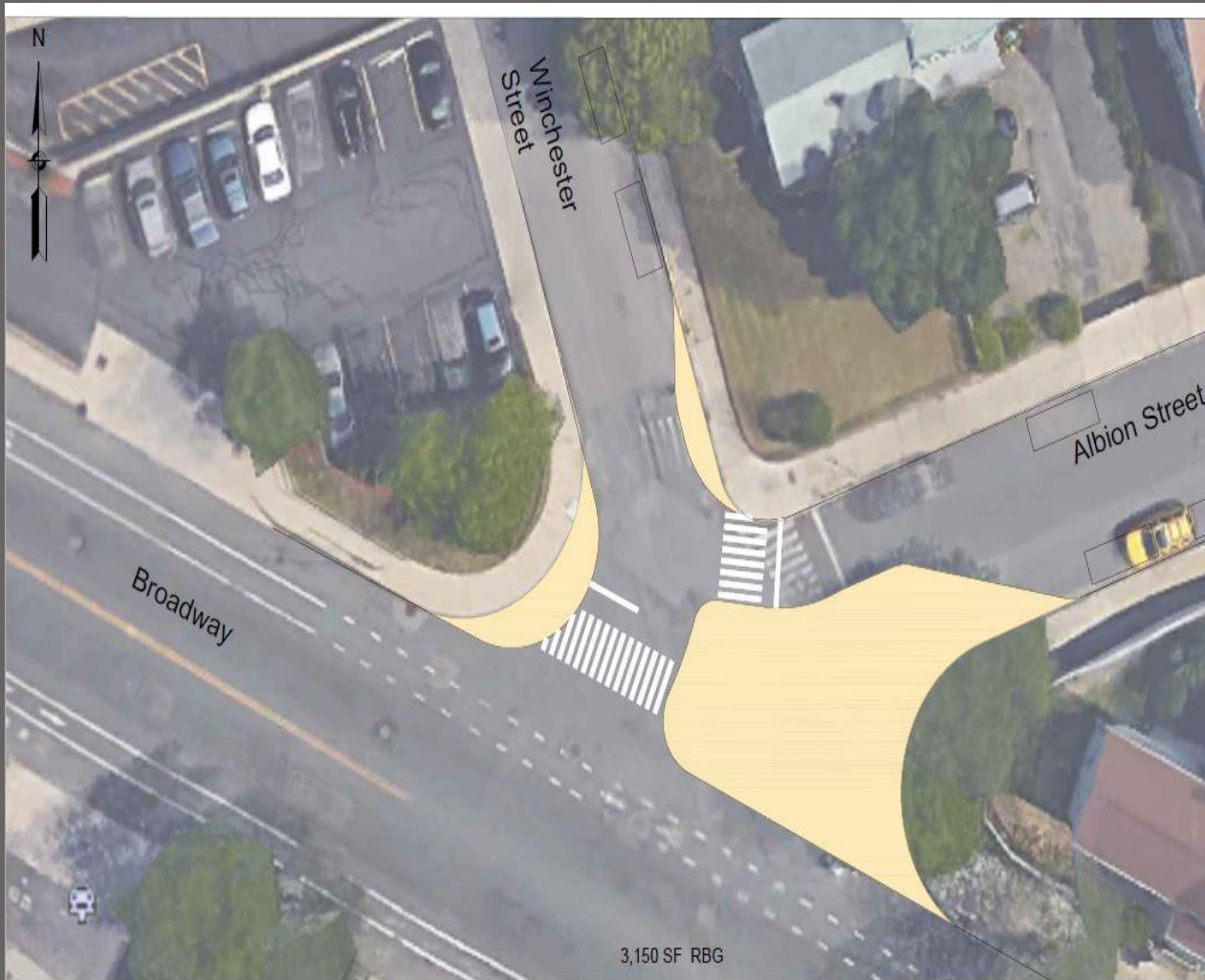
Emergency Response

Business Support

Public Space

Bus Modification

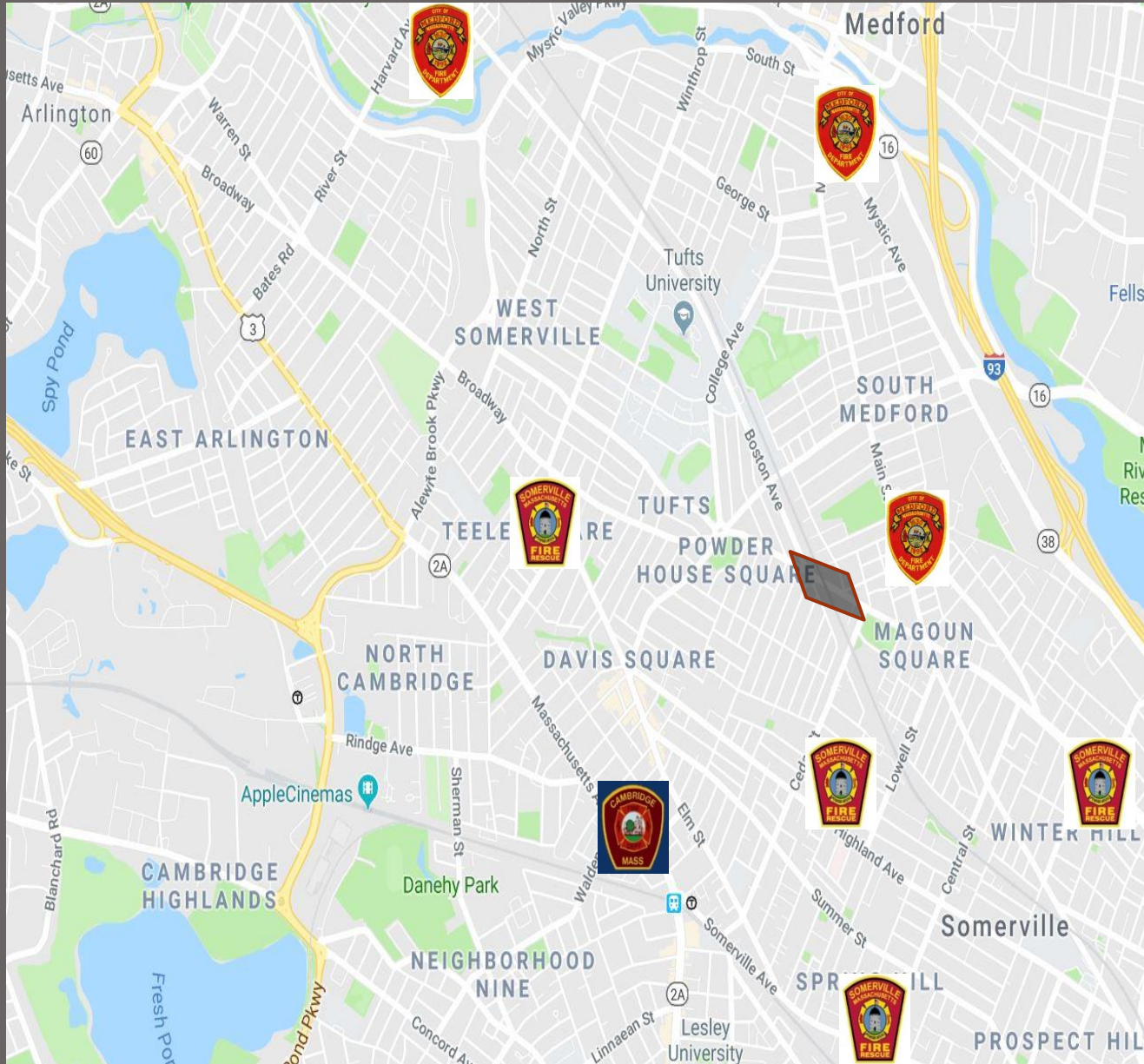
Pest Management



Conceptual Intersection Layout
Broadway at Winchester Street/Albion Street
T-off Albion Street option
Date: 02/28/2017

0 20 50
SCALE: 1" = 20'

Inter-Municipal Emergency Service Planning is Ongoing



MBTA Green Line

OUR STRATEGIES

Detour Planning

Emergency Response

Business Support

Public Space

Bus Modification

Pest Management

Support Local Businesses During Construction

Communicate

Ensure businesses and their customers get timely, actionable information before and during construction and know who to contact with questions.

Strengthen

Help strengthen businesses so that they can survive the disruption. Use this opportunity to support the overall health of affected businesses.

Attract

Invest in strategies that encourage customers to continue patronizing businesses and that build the square's reputation as a destination.

MBTA Green Line

OUR STRATEGIES

Detour Planning

Emergency Response

Business Support

Public Space

Bus Modification

Pest Management

Add Temporary Public Space to Attract Customers

Example of Davis Square “Street Seats”



MBTA Green
Line

OUR STRATEGIES

Detour
Planning

Emergency
Response

Business
Support

Public Space

Bus
Modification

Pest
Management

Add Temporary Public Space to Attract Customers



**Example of Somerville Avenue
“Parklet”**

MBTA Green
Line

OUR STRATEGIES

Detour
Planning

Emergency
Response

Business
Support

Public Space

Bus
Modification

Pest
Management

Double service frequency on MBTA Route 90 Bus to provide better cross-town transit

MBTA Green Line

OUR STRATEGIES

- Detour Planning
- Emergency Response
- Business Support
- Public Space
- Bus Modification
- Pest Management

schedule change

90

Spring April 1, 2018 - June 23, 2018

Davis Square-Wellington Station

Serving

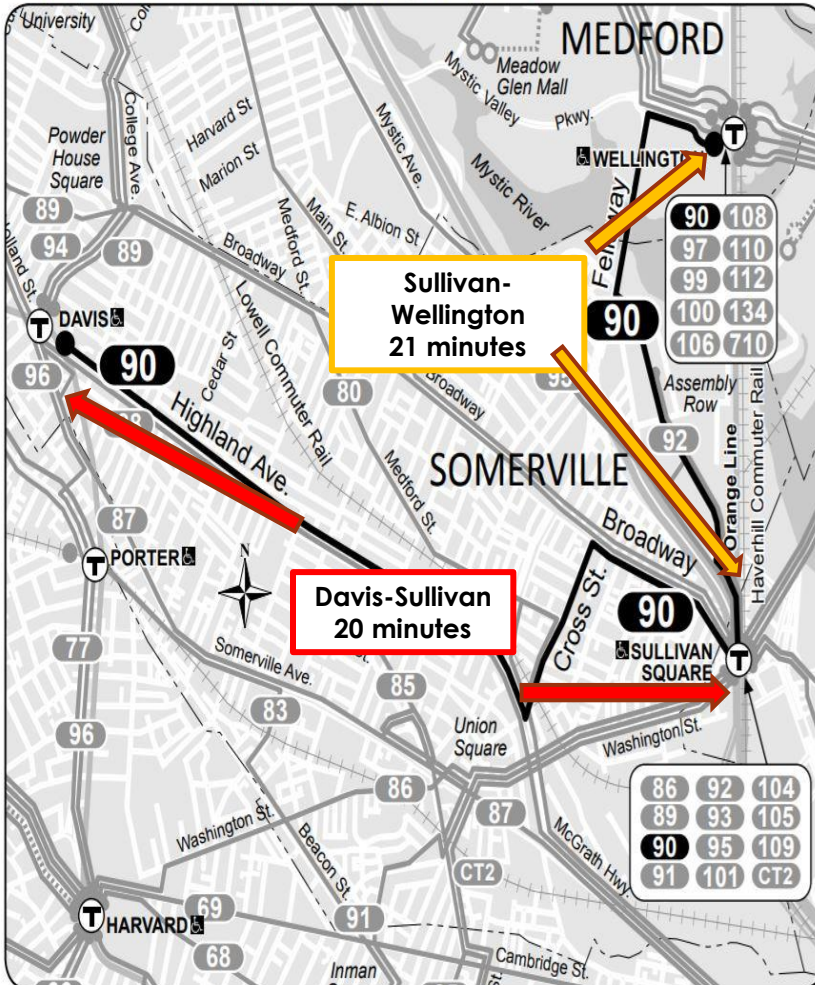
- Assembly Square Mall
- Sullivan Square Station
- Somerville City Hospital
- Somerville High School
- Somerville City Hall
- Orange Line
- Red Line



T Massachusetts Bay Transportation Authority *massDOT*
Massachusetts Department of Transportation

Information 617-222-3200 • 1-800-392-6100
 (TTY) 617-222-5146 • www.mbta.com

Route 90 Davis Square - Wellington Station



Mobilize City Pest Management Program to Complement GLX Efforts

MBTA Green Line

OUR STRATEGIES

Detour
Planning

Emergency
Response

Business
Support

Public Space

Bus
Modification

Pest
Management

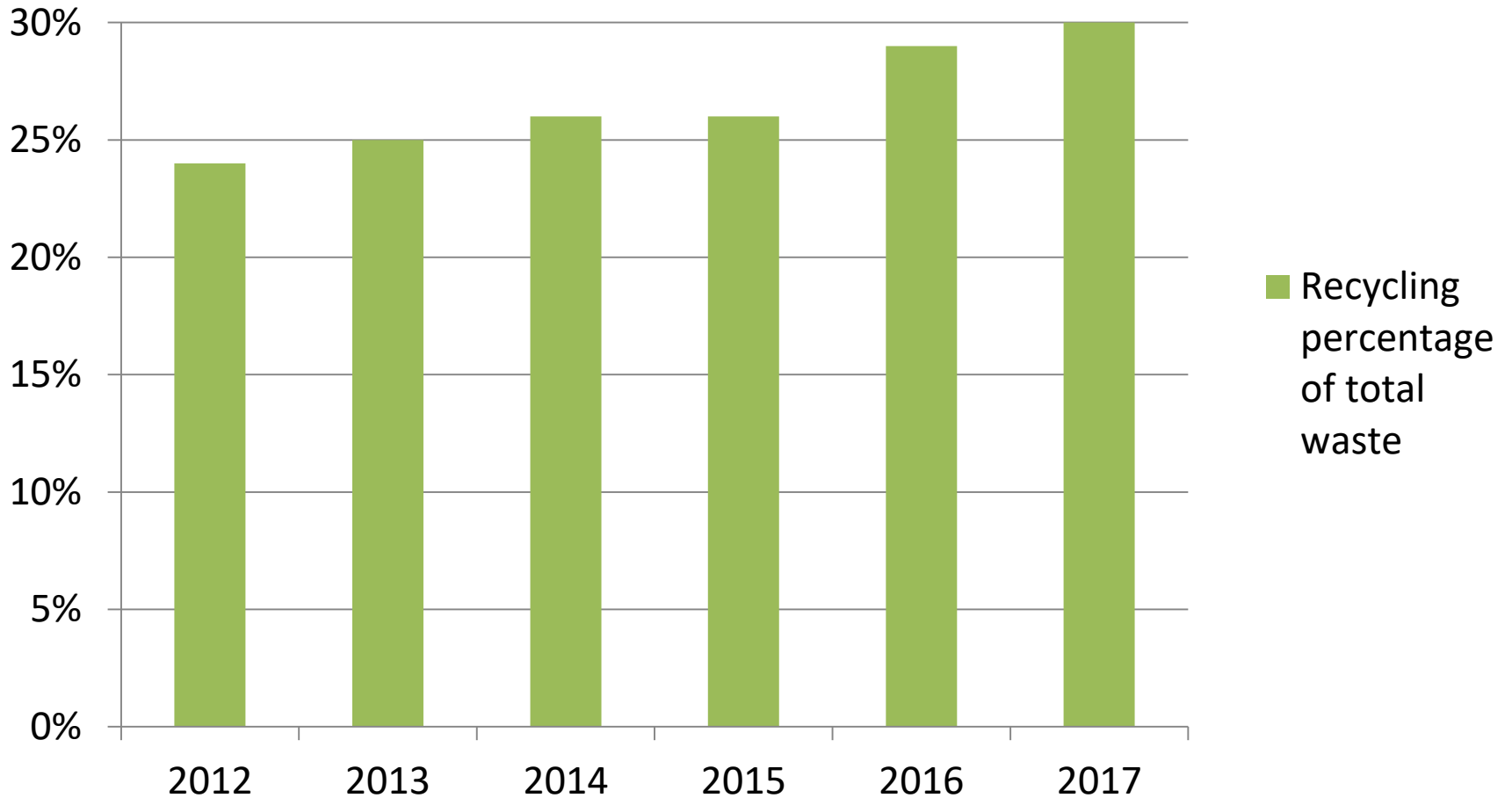


REDUCE

REUSE

RECYCLE

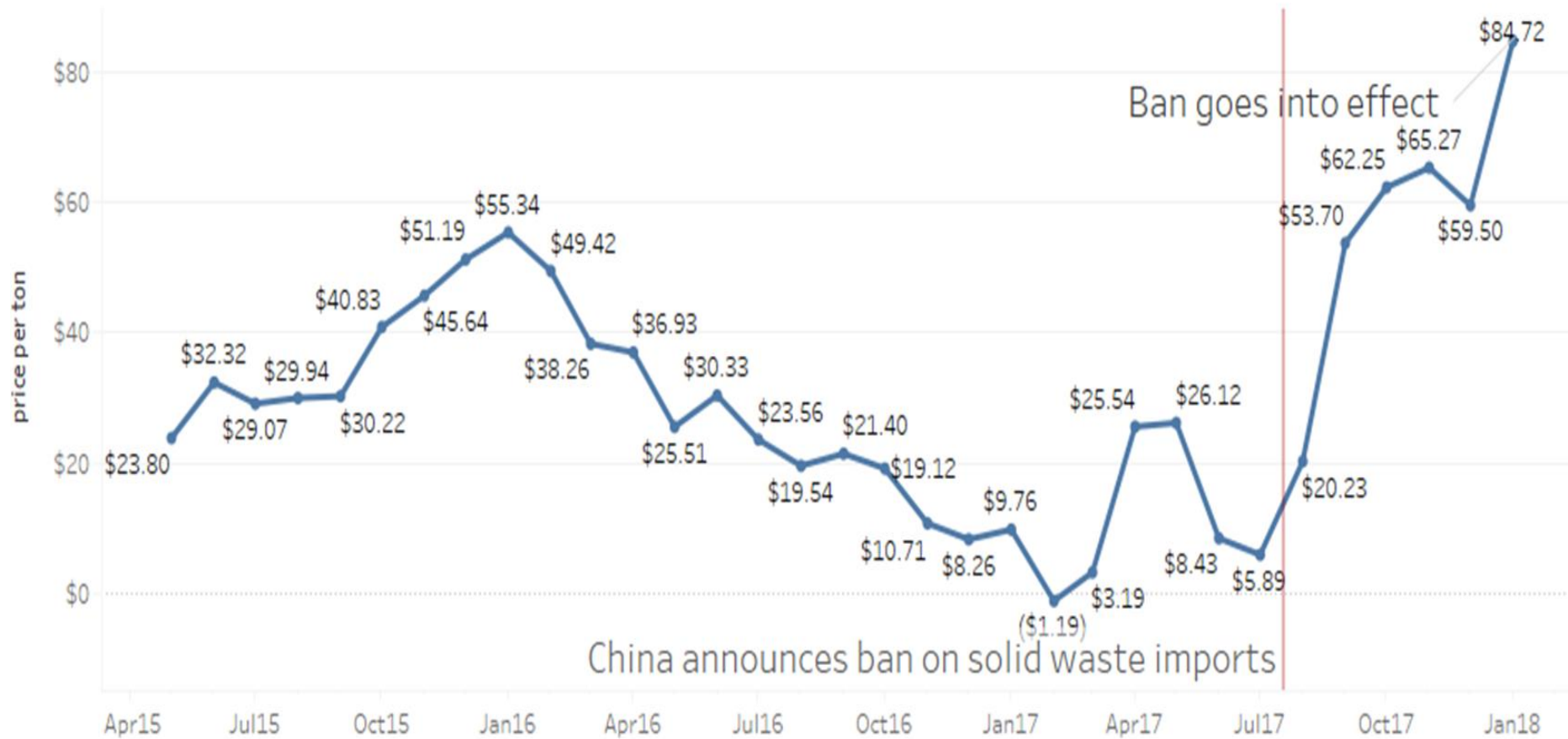
Somerville's Done a Great Job on the Recycle Part



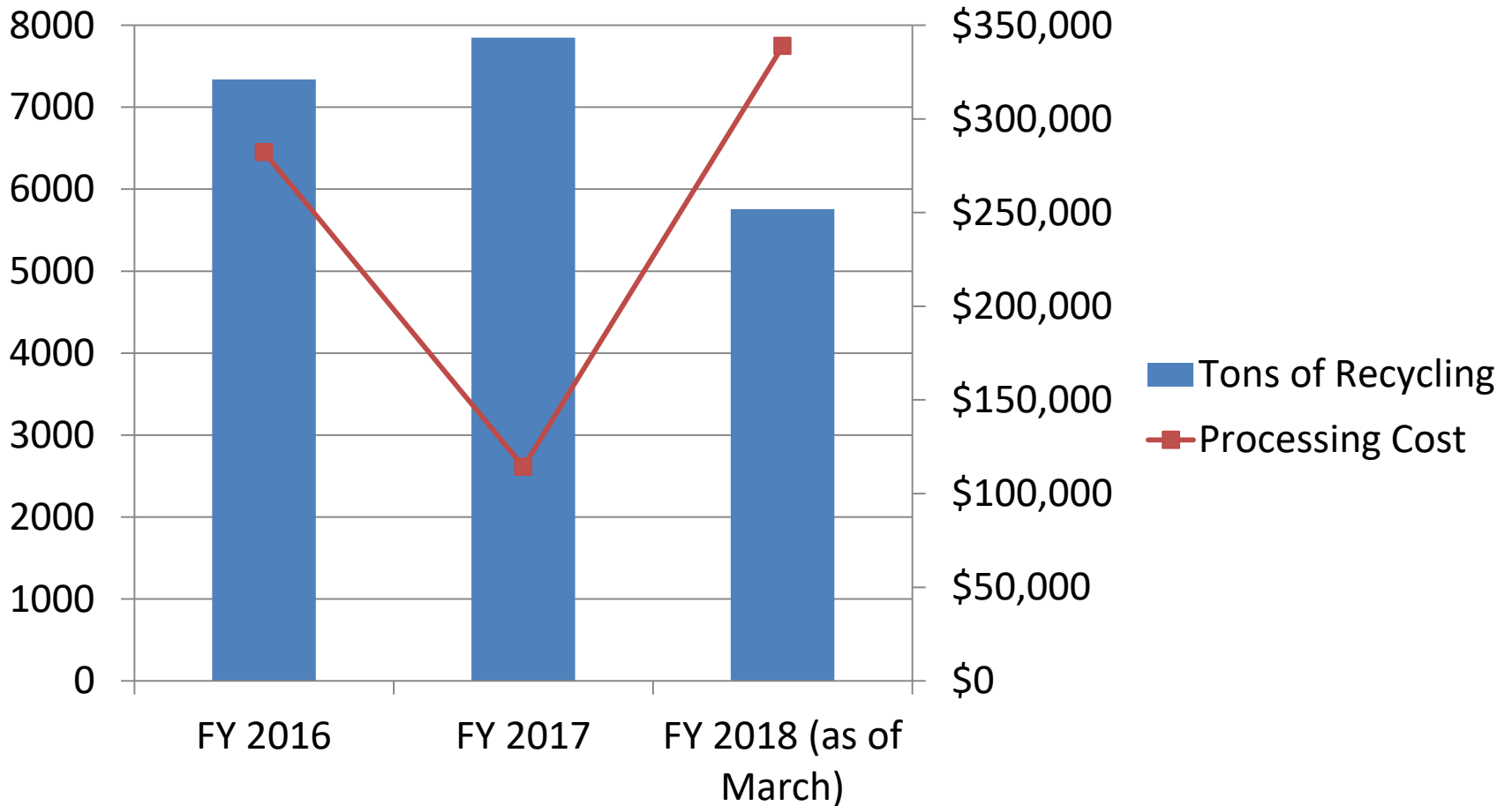
Why are Reduce and Reuse Even More Important?

- Recyclables are a commodity in the global economy
 - The US exports about 75% of its recycling to China
 - China recently changed policies on the materials it will accept, resulting in higher costs

The Rising Cost of Recycling



What Does that Mean in Somerville?



Suggestions for Reducing and Reusing

- Use reusable containers, bags, and water bottles
- Repair broken items
- Donate or sell items you no longer want
- Borrow or rent items you need to use occasionally
- Buy items with less packaging