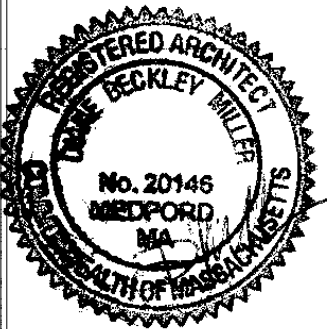


Architect:  
Miller Design LLC  
52 Statler Road  
Belmont MA 02478  
617-993-3157

Date:	Issued for:
2/9/15	SCHEMATIC DESIGN
3/2/15	DESIGN DEVELOPMENT
3/13/15	CONSTRUCTION DOCS
5/27/15	REVISIONS
7/8/15	REVISIONS
8/16/15	REVISIONS
9/3/15	REVISIONS
10/6/15	REVISIONS
10/26/15	REVISIONS

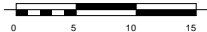


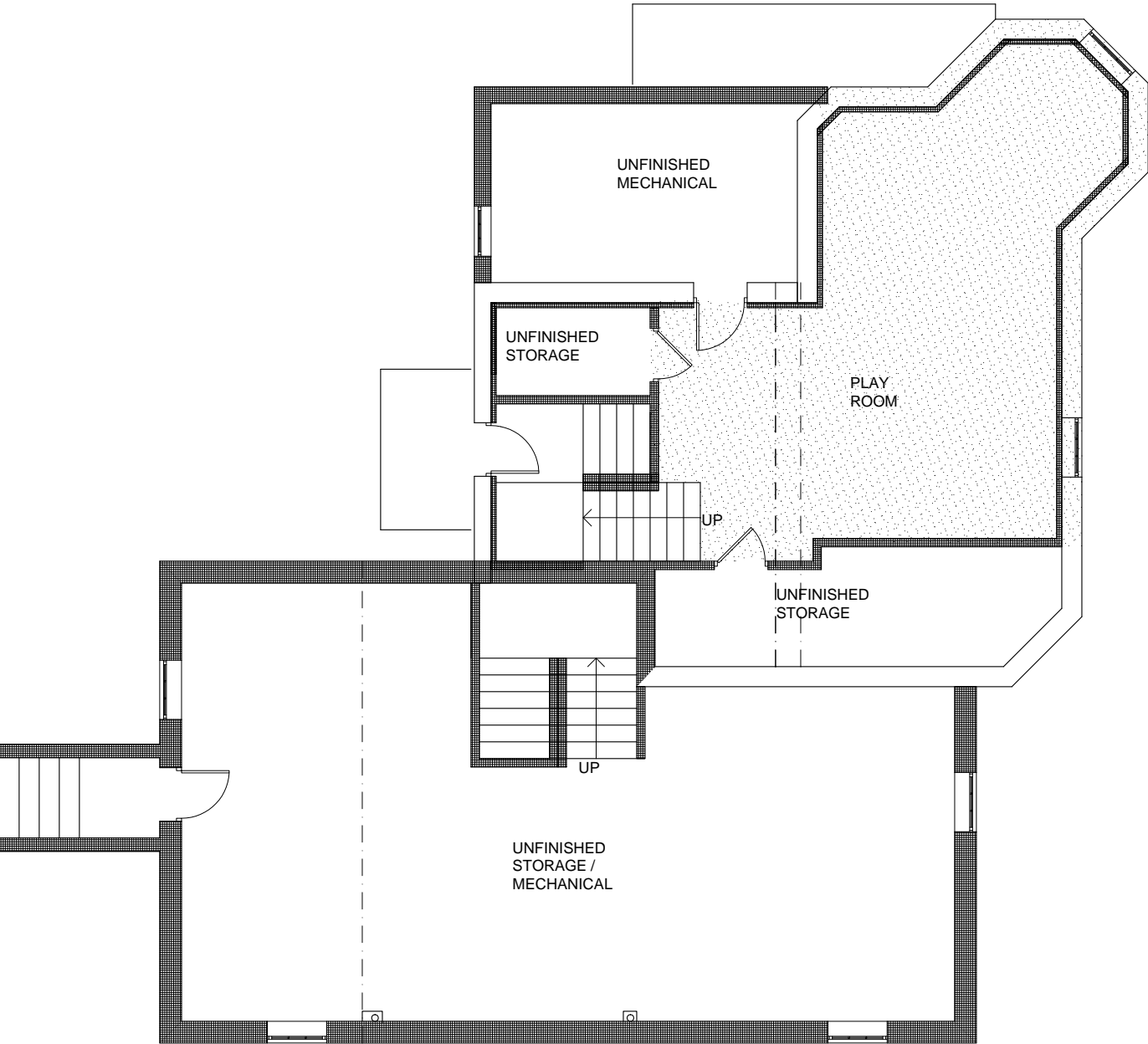
HE RESIDENCE  
906-908 BROADWAY  
SOMERVILLE MA

SITE DIAGRAM

Sheet  
Number:  
**A7**

NOTE: REFER TO CERTIFIED PLOT  
PLAN FOR EXACT SITE DIMENSIONS  
AND CALCULATIONS AND  
COORDINATION OF GRADING AND  
LANDSCAPE STAIRS.





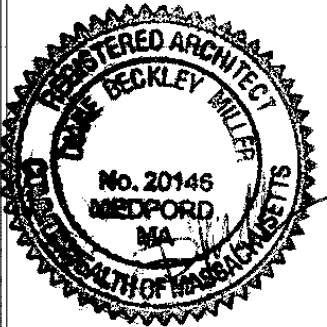
444 sq ft

NOTE: REFER TO STRUCTURAL  
ENGINEERING DRAWINGS FOR ALL  
FRAMING AND WORK ASSOCIATED  
WITH LOAD-BEARING MEMBERS.



Architect:  
Miller Design LLC  
52 Statler Road  
Belmont MA 02478  
617-993-3157

Date:	Issued for:
2/9/15	SCHEMATIC DESIGN
3/2/15	DESIGN DEVELOPMENT
3/13/15	CONSTRUCTION DOCS
5/27/15	REVISIONS
6/2/15	REVISIONS
7/8/15	REVISIONS
9/3/15	REVISIONS
10/6/15	REVISIONS
10/26/15	REVISIONS

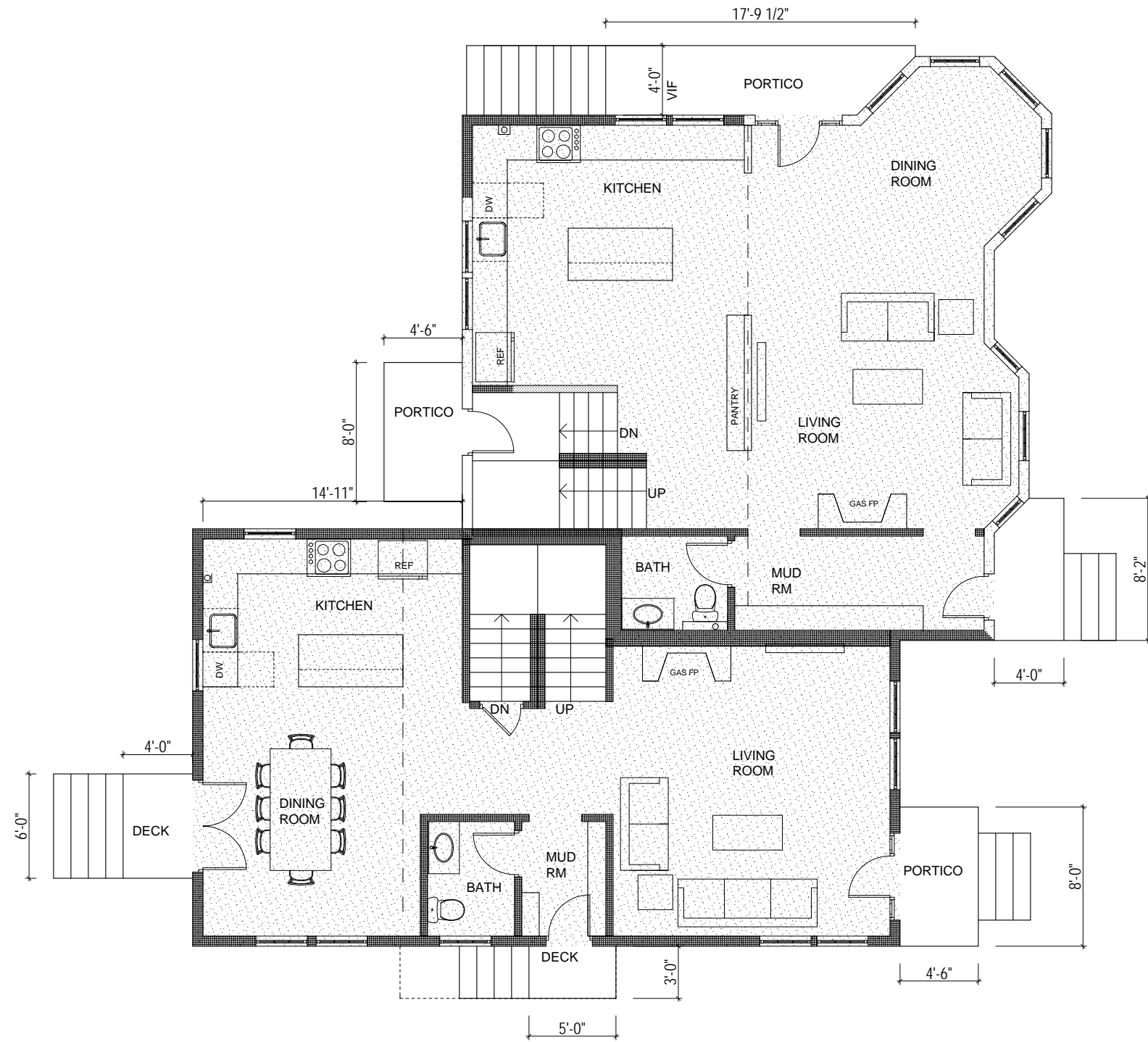


HE RESIDENCE  
906-908 BROADWAY  
SOMERVILLE MA

NEW BASEMENT  
PLAN

Sheet  
Number:

A8



852 sq ft

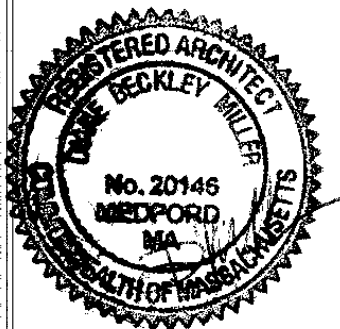
786 sq ft

NOTE: REFER TO STRUCTURAL  
ENGINEERING DRAWINGS FOR ALL  
FRAMING AND WORK ASSOCIATED  
WITH LOAD-BEARING MEMBERS.



Architect:  
Miller Design LLC  
52 Statler Road  
Belmont MA 02478  
617-993-3157

Date:	Issued for:
2/9/15	SCHEMATIC DESIGN
3/2/15	DESIGN DEVELOPMENT
3/13/15	CONSTRUCTION DOCS
5/27/15	REVISIONS
6/2/15	REVISIONS
7/8/15	REVISIONS
9/3/15	REVISIONS
10/6/15	REVISIONS
10/26/15	REVISIONS

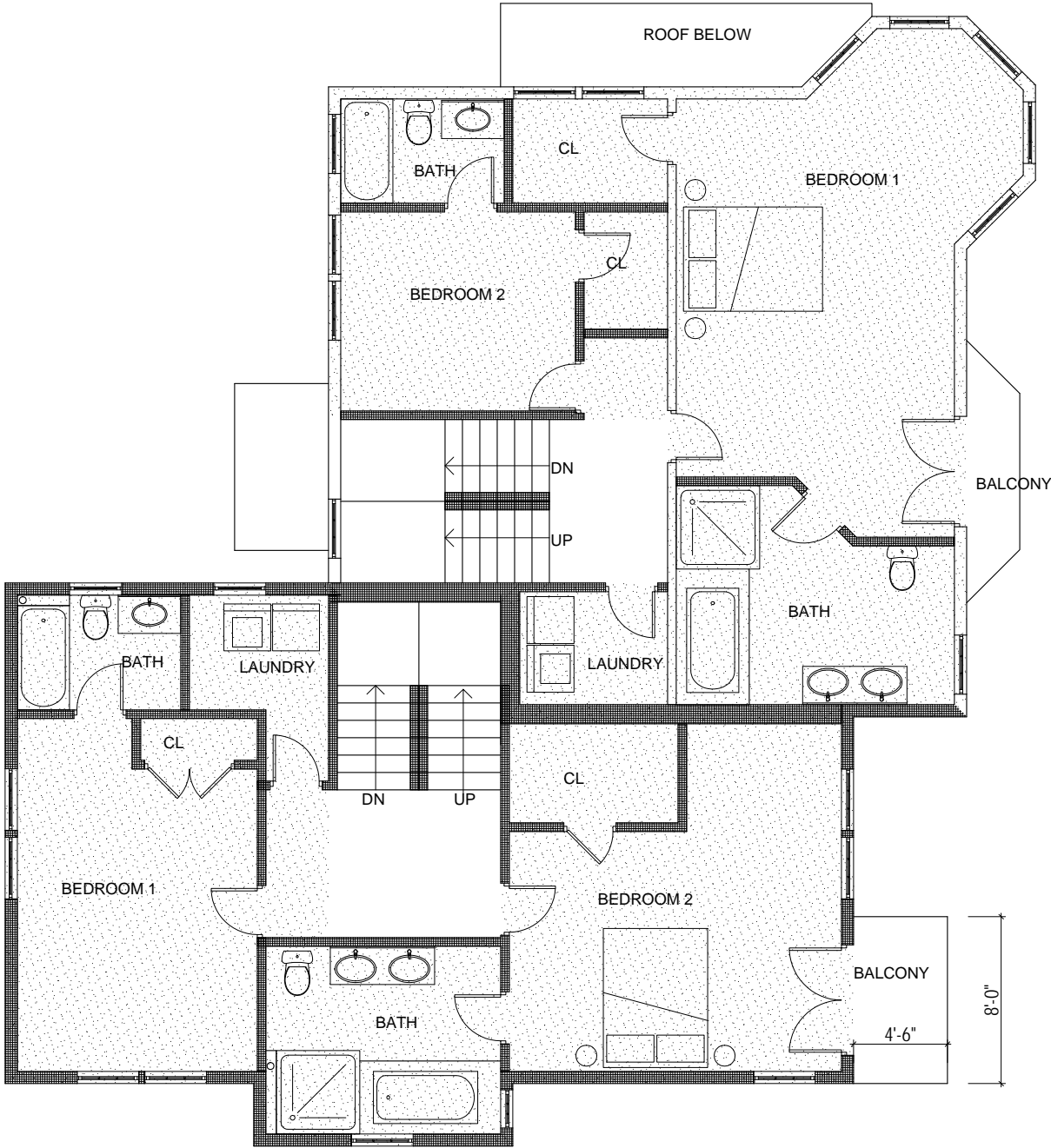


HE RESIDENCE  
906-908 BROADWAY  
SOMERVILLE MA

NEW FIRST  
FLOOR PLAN

Sheet  
Number:

A9



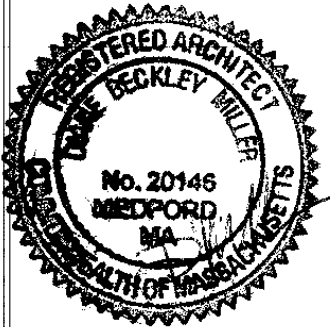
785 sq ft  
766 sq ft

NOTE: REFER TO STRUCTURAL  
ENGINEERING DRAWINGS FOR ALL  
FRAMING AND WORK ASSOCIATED  
WITH LOAD-BEARING MEMBERS.



Architect:  
Miller Design LLC  
52 Statler Road  
Belmont MA 02478  
617-993-3157

Date:	Issued for:
2/9/15	SCHEMATIC DESIGN
3/2/15	DESIGN DEVELOPMENT
3/13/15	CONSTRUCTION DOCS
5/27/15	REVISIONS
6/2/15	REVISIONS
7/8/15	REVISIONS
9/3/15	REVISIONS
10/6/15	REVISIONS
10/26/15	REVISIONS

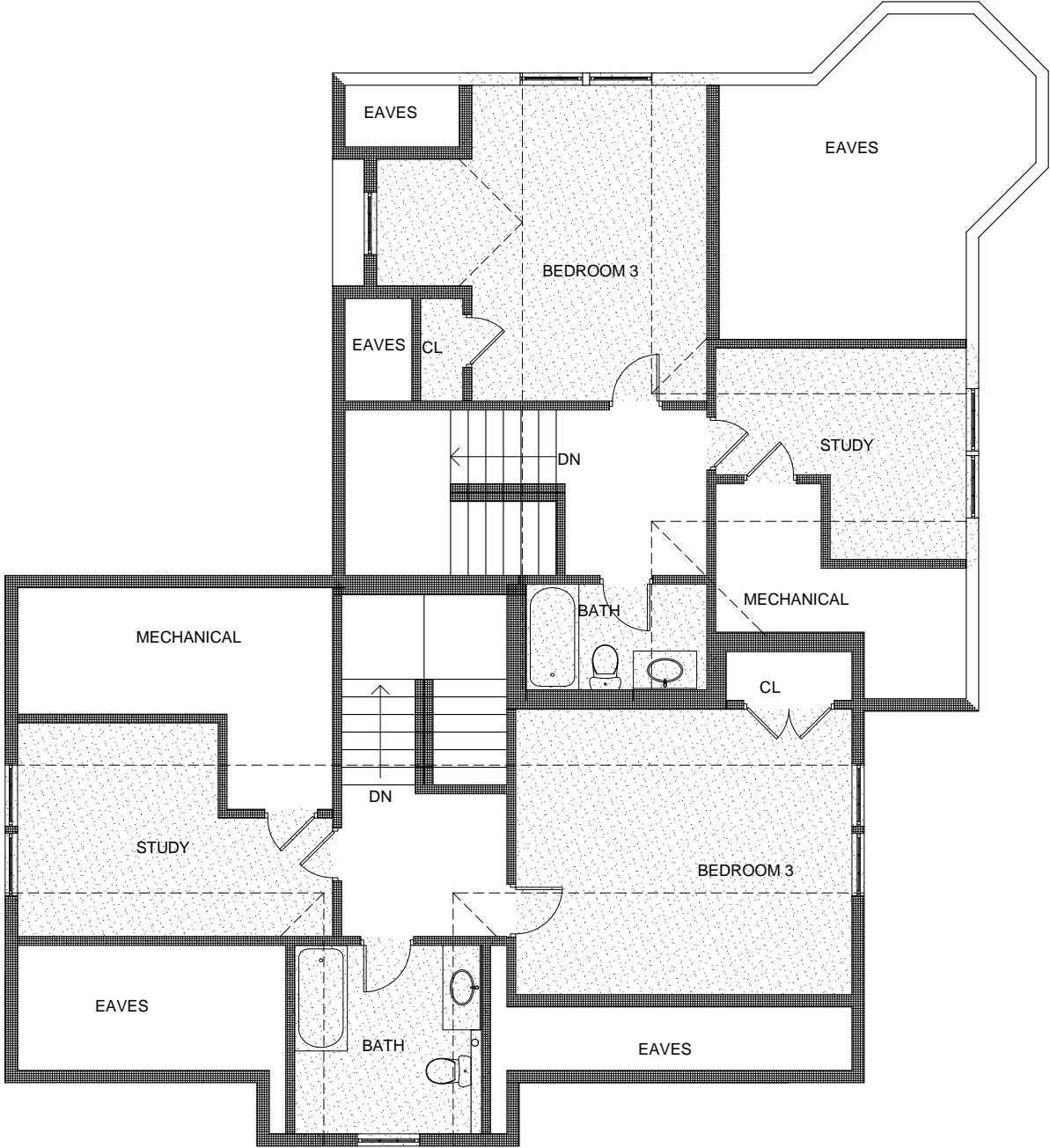


HE RESIDENCE  
906-908 BROADWAY  
SOMERVILLE MA

NEW SECOND  
FLOOR PLAN

Sheet  
Number:

A10



395 sq ft

466 sq ft

NOTE: REFER TO STRUCTURAL  
ENGINEERING DRAWINGS FOR ALL  
FRAMING AND WORK ASSOCIATED  
WITH LOAD-BEARING MEMBERS.



Architect:  
Miller Design LLC  
52 Statler Road  
Belmont MA 02478  
617-993-3157

Date:	Issued for:
2/9/15	SCHEMATIC DESIGN
3/2/15	DESIGN DEVELOPMENT
3/13/15	CONSTRUCTION DOCS
5/27/15	REVISIONS
6/2/15	REVISIONS
6/10/15	REVISIONS
9/3/15	REVISIONS
10/6/15	REVISIONS
10/26/15	REVISIONS

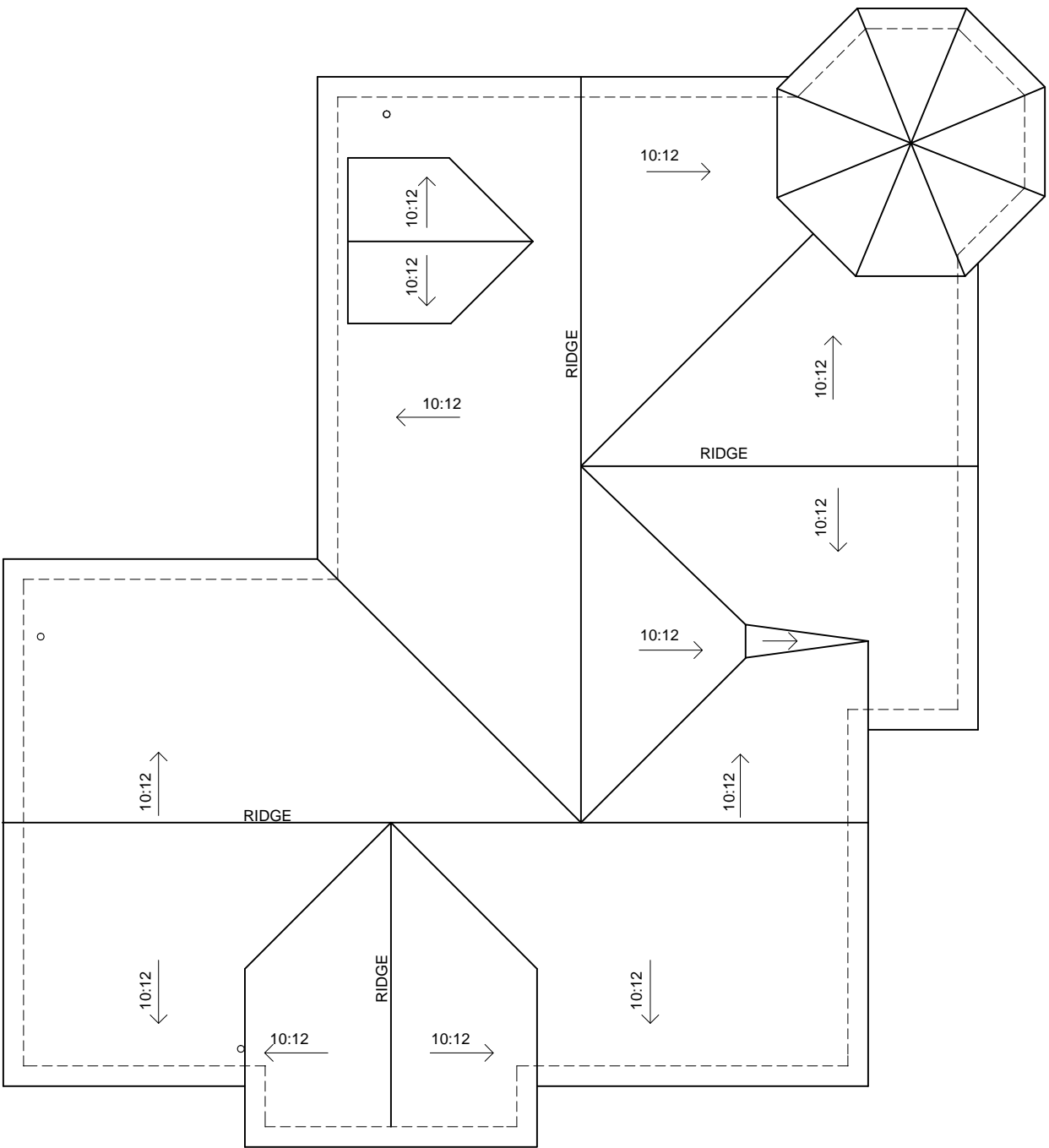


HE RESIDENCE  
906-908 BROADWAY  
SOMERVILLE MA

NEW THIRD  
FLOOR PLAN

Sheet  
Number:

A11



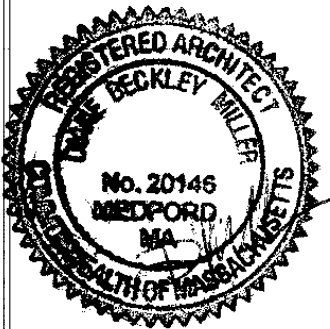
NOTE: REFER TO STRUCTURAL  
ENGINEERING DRAWINGS FOR ALL  
FRAMING AND WORK ASSOCIATED  
WITH LOAD-BEARING MEMBERS.



Architect:  
Miller Design LLC  
52 Statler Road  
Belmont MA 02478  
617-993-3157

Date:	Issued for:
2/9/15	SCHEMATIC DESIGN
3/2/15	DESIGN DEVELOPMENT
3/13/15	CONSTRUCTION DOCS

9/3/15	REVISIONS
10/6/15	REVISIONS
10/26/15	REVISIONS



HE RESIDENCE  
906-908 BROADWAY  
SOMERVILLE MA

NEW ROOF  
PLAN

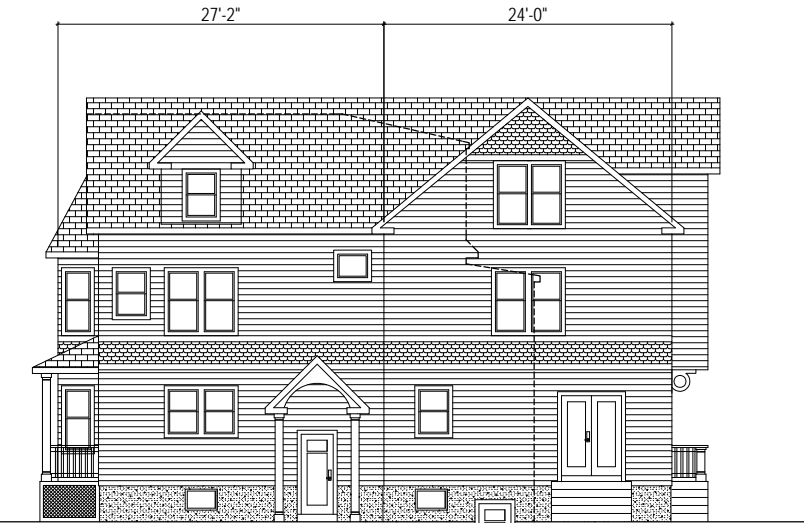
Sheet  
Number:

A12

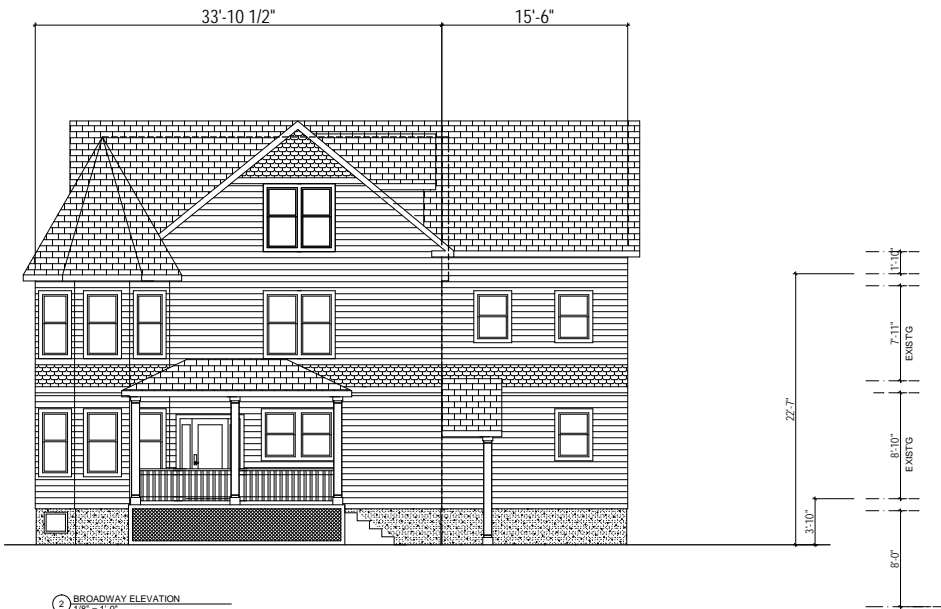
DASHED LINE INDICATES OUTLINE OF EXISTING STRUCTURE, TYP



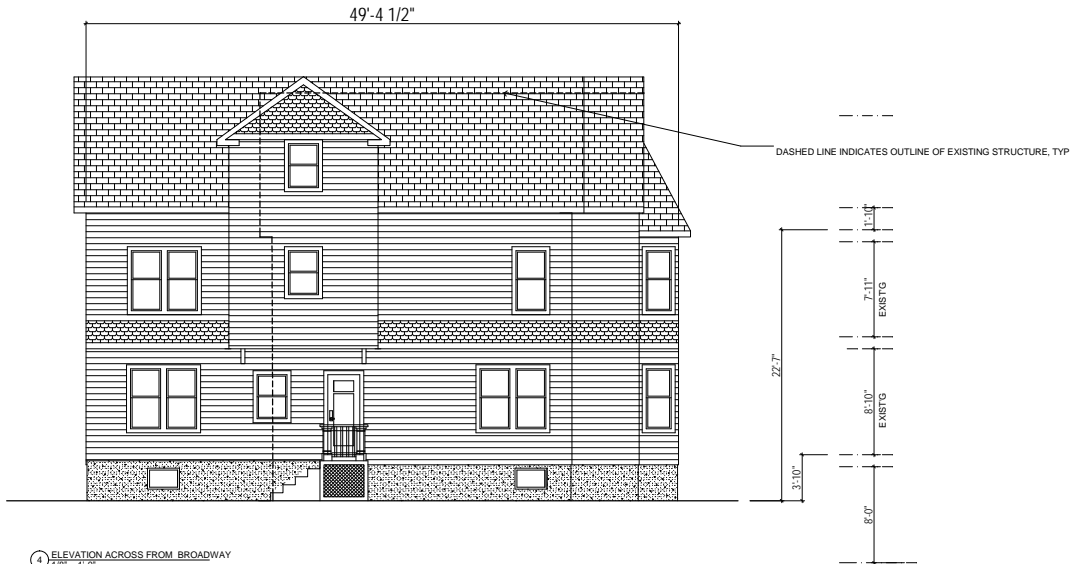
1 BILLINGHAM ELEVATION  
1/8" = 1'-0"



2 ELEVATION ACROSS FROM BROADWAY  
1/8" = 1'-0"



3 BROADWAY ELEVATION  
1/8" = 1'-0"



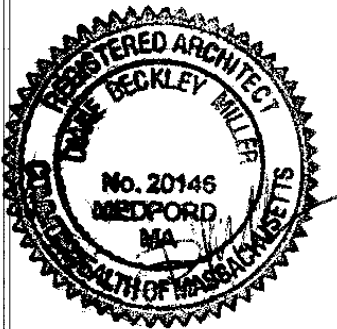
4 ELEVATION ACROSS FROM BROADWAY  
1/8" = 1'-0"



Architect:  
Miller Design LLC  
52 Statler Road  
Belmont MA 02478  
617-993-3157

Date: Issued for:

2/9/15	SCHEMATIC DESIGN
3/2/15	DESIGN DEVELOPMENT
3/13/15	CONSTRUCTION DOCS
6/2/15	REVISIONS
6/10/15	REVISIONS
7/8/15	REVISIONS
8/13/15	REVISIONS
9/3/15	REVISIONS
9/22/15	REVISIONS
10/6/15	REVISIONS
10/26/15	REVISIONS



HE RESIDENCE  
906-908 BROADWAY  
SOMERVILLE MA

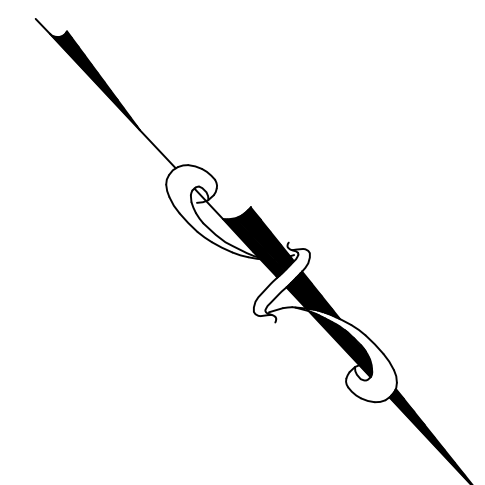
NEW ELEVATIONS

Sheet  
Number:

A13







**NOTES:**

- \* Assessors Ref.: 16 / D / 12
- \* Deed Ref.: Book 62030, Page 300
- \* Plan Ref.: Plan Book 39 Plan 40  
Plan Book 178 Plan 42
- \* Zone: RESIDENCE A
- \* Elevations shown based on assumed datum
- \* Existing Building Height calculations:
  - Average finished grade = 97.1'
  - Roof Eave Elevation = 118.4'
  - Roof Peak Elevation = 130.5'
  - Building Height =  $(130.5' - 118.4') / 2 - 97.1' = 27.4'$
- \* Existing Ground Coverage = 15.2% (1,043 S.F.)
- \* Existing Pervious Area = 67.5% (4,624 S.F.)
- \* Existing Landscaping Area = 67.5% (4,624 S.F.)
- \* Proposed Ground Coverage = 29.0% (1,988 S.F.)
- \* Proposed Pervious Area = 68.3 % (4,679 S.F.)
- \* Proposed Landscaping Area = 58.4 % (4,002 S.F.)

## Proposed Site Plan

906-908 Broadway  
Somerville, MA 02144



10 Andrew Square, Suite 201B  
South Boston, MA 02127  
Tel. 857-544-3061  
[www.land-mapping.com](http://www.land-mapping.com)

Date: October 21, 2015



*Patrick J. Roseingrave*  
Professional Land Surveyor