

oath CRAFT PIZZA

STOREFRONT - FRONT LAYOUT - OPTION A
SCALE: 1/2" = 1'-0"

oath CRAFT PIZZA

STOREFRONT - SIDE LAYOUT - OPTION A
SCALE: 1/2" = 1'-0"



BLADE SIGN LAYOUT - OPTION A
SCALE: 1" = 1'-0"

SINCE 1917



MANDEVILLE SIGN
making your mark.

676 GEORGE WASHINGTON HIGHWAY
LINCOLN, RI 02865-4255

401-334-9100 401-334-7799
PHONE FAX

WEB www.mandevillesign.com

APPROVALS

Signatures Required Before Release to Production

Engineering	
BY	DATE
Sales	
BY	DATE
Estimating	
BY	DATE
Production	
BY	DATE
Quality Control	
BY	DATE

VM PRODUCT NUMBER(S)

REVISIONS

NO.	BY	DESCRIPTION	DATE
1			
2			
3			
4			
5			
6			
7			
8			
9			
10			
11			
12			

CLIENT



280 ELM STREET
SOMERVILLE, MA

LOCATION

WORK ORDER NUMBER(S)

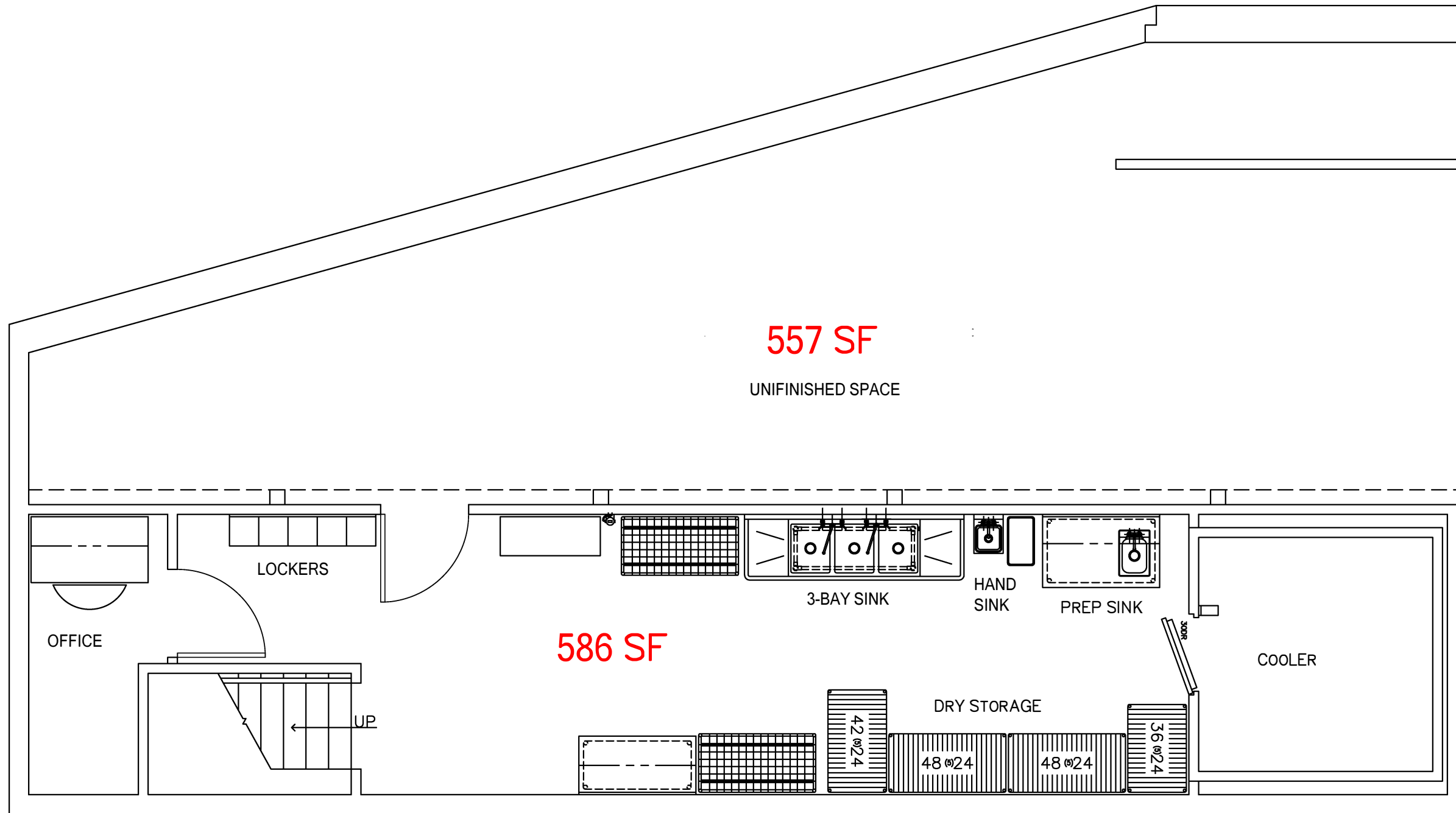
TOM MANDEVILLE

PROJECT MANAGER

SCALE	NOTED	SWS	12/2/15
		ARTIST	DATE

Z-OATH-3

DRAWING NAME



557 SF

UNFINISHED SPACE

LOCKERS

OFFICE

UP

3-BAY SINK

HAND SINK

PREP SINK

COOLER

586 SF

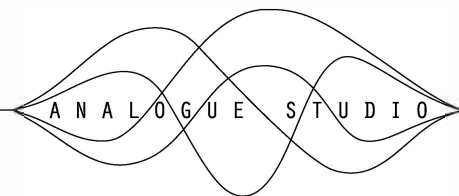
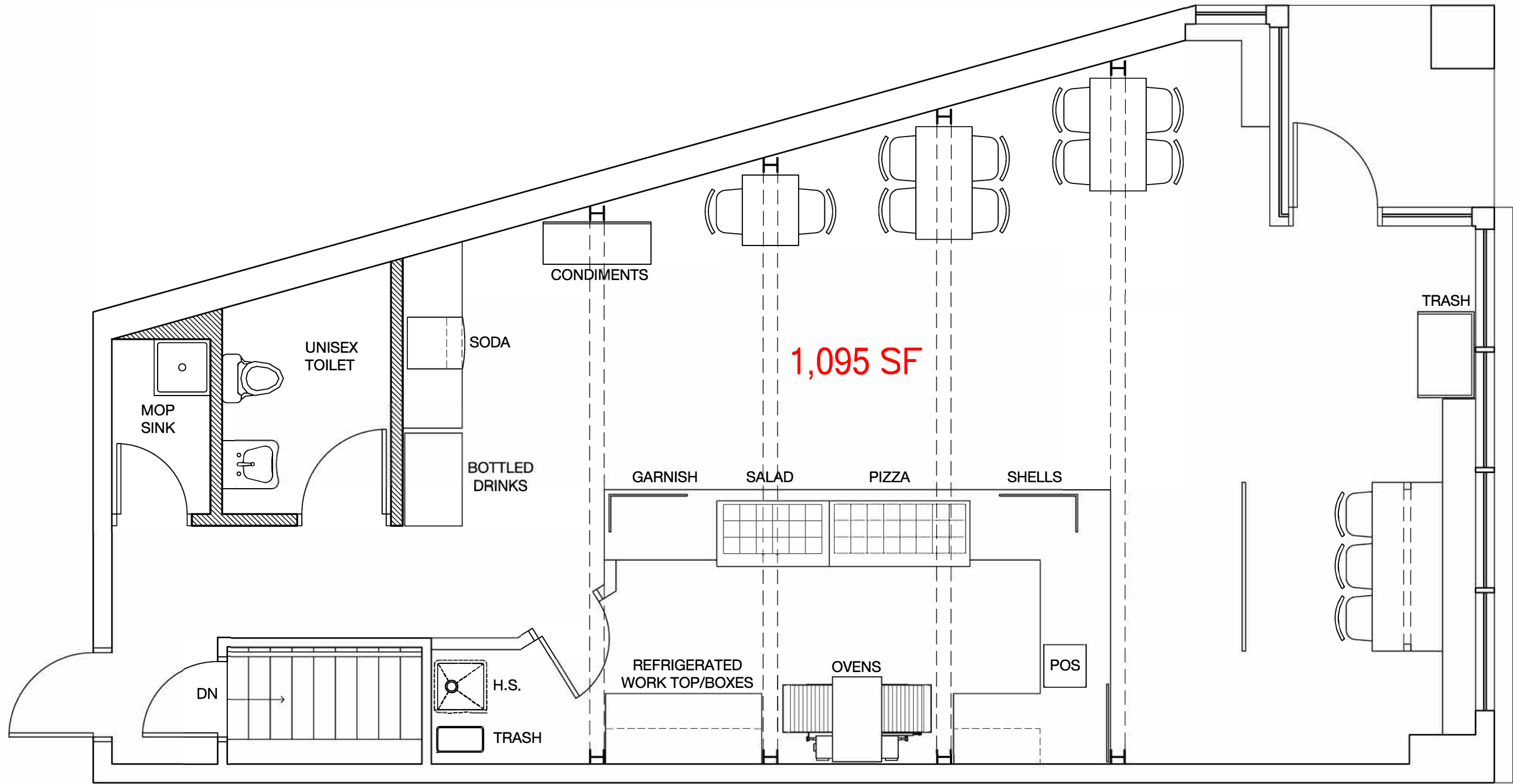
DRY STORAGE

42 @ 24

48 @ 24

48 @ 24

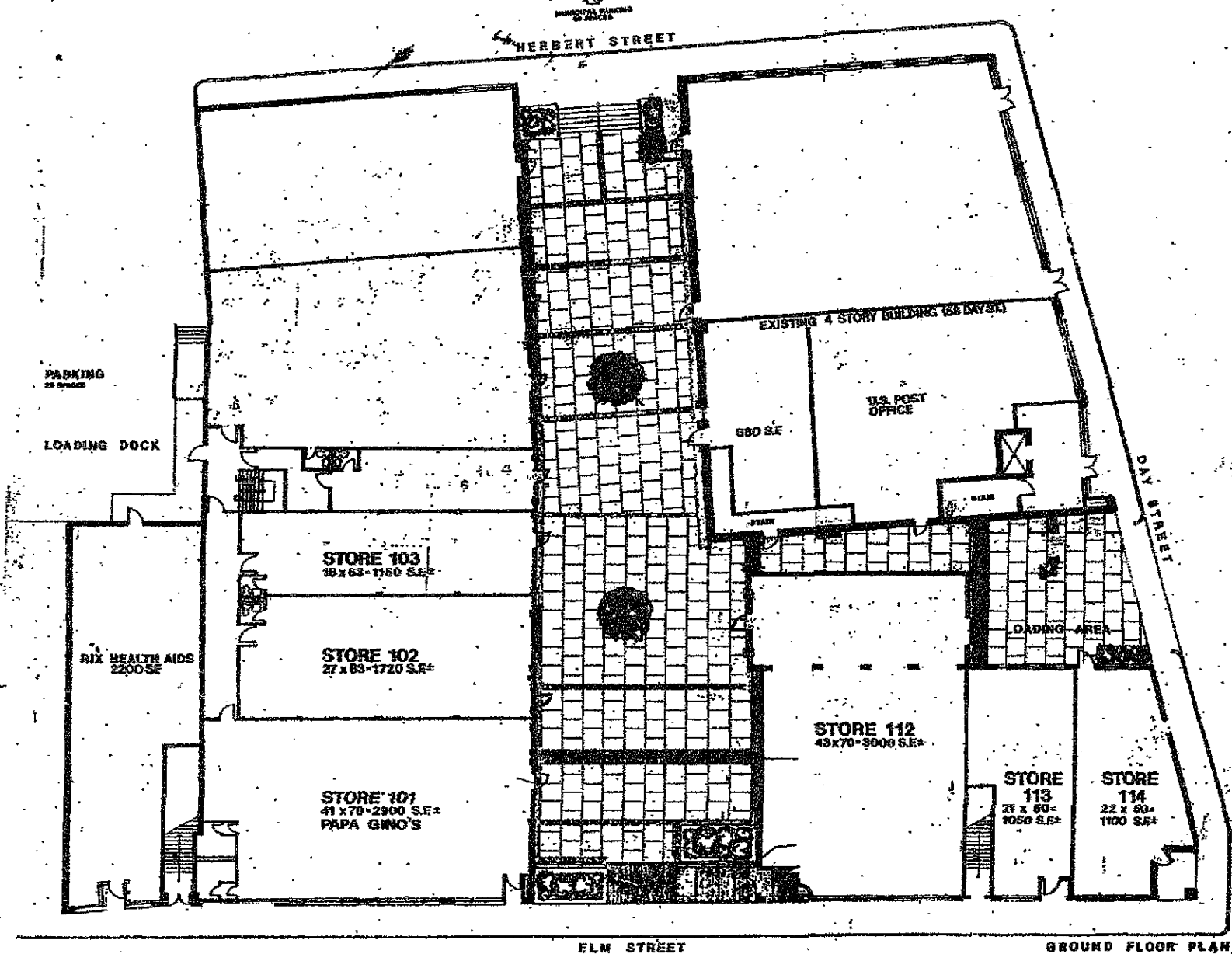
36 @ 24



OATH PIZZA
280 ELM STREET, STORE 114

DATE: 2015-12-16
TITLE: **FIRST LEVEL**
SCALE: 1/4"=1'-0"

ANALOGUE STUDIO, LLC
21 DRYDOCK AVENUE, 6TH FLOOR
BOSTON, MA 02210
T | F 617.440.7568
WWW.ANALOGUESTUDIO.COM



GROUND FLOOR PLAN

SHOPPING MALL
SOMERVILLE MASS.