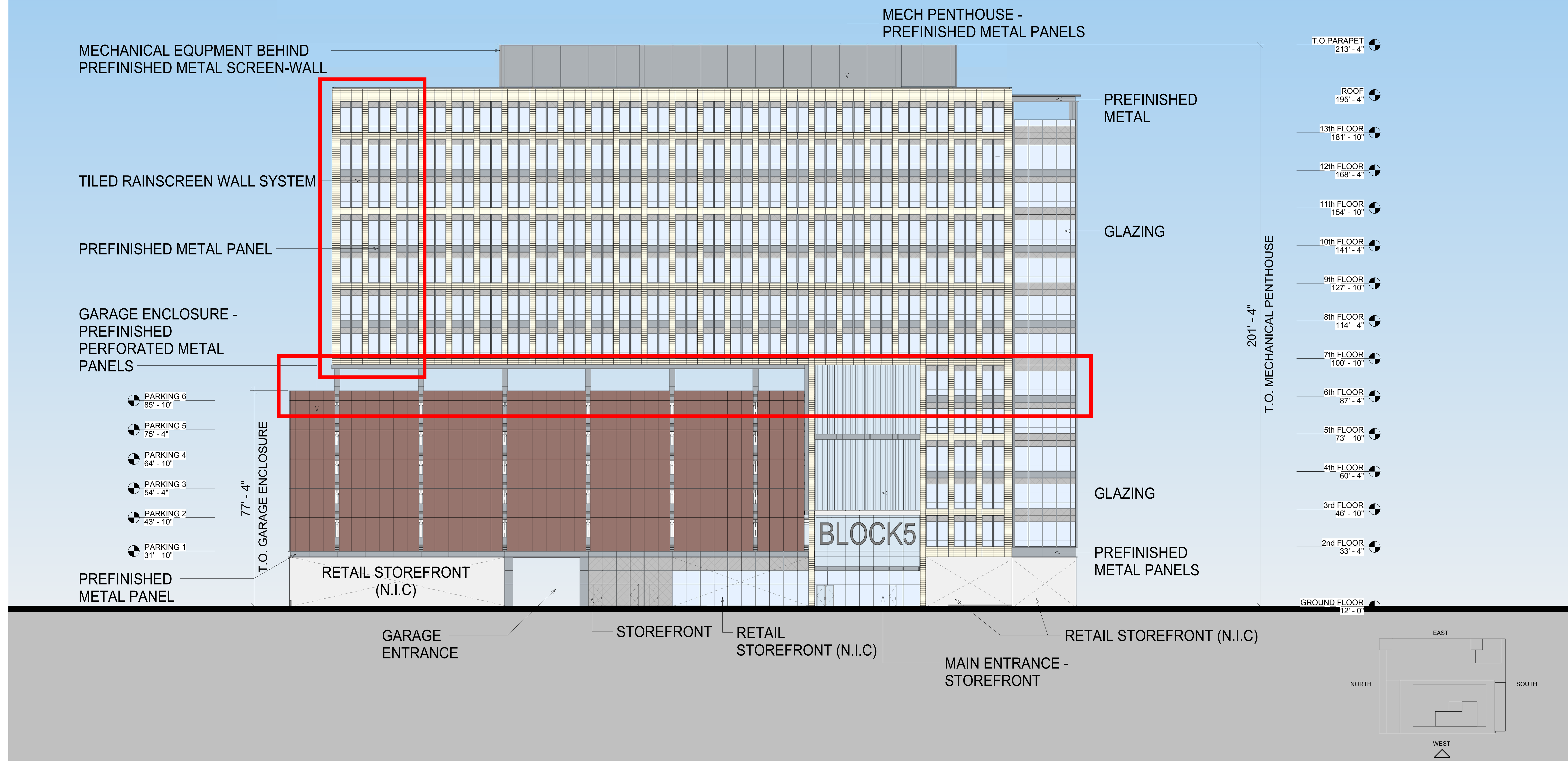


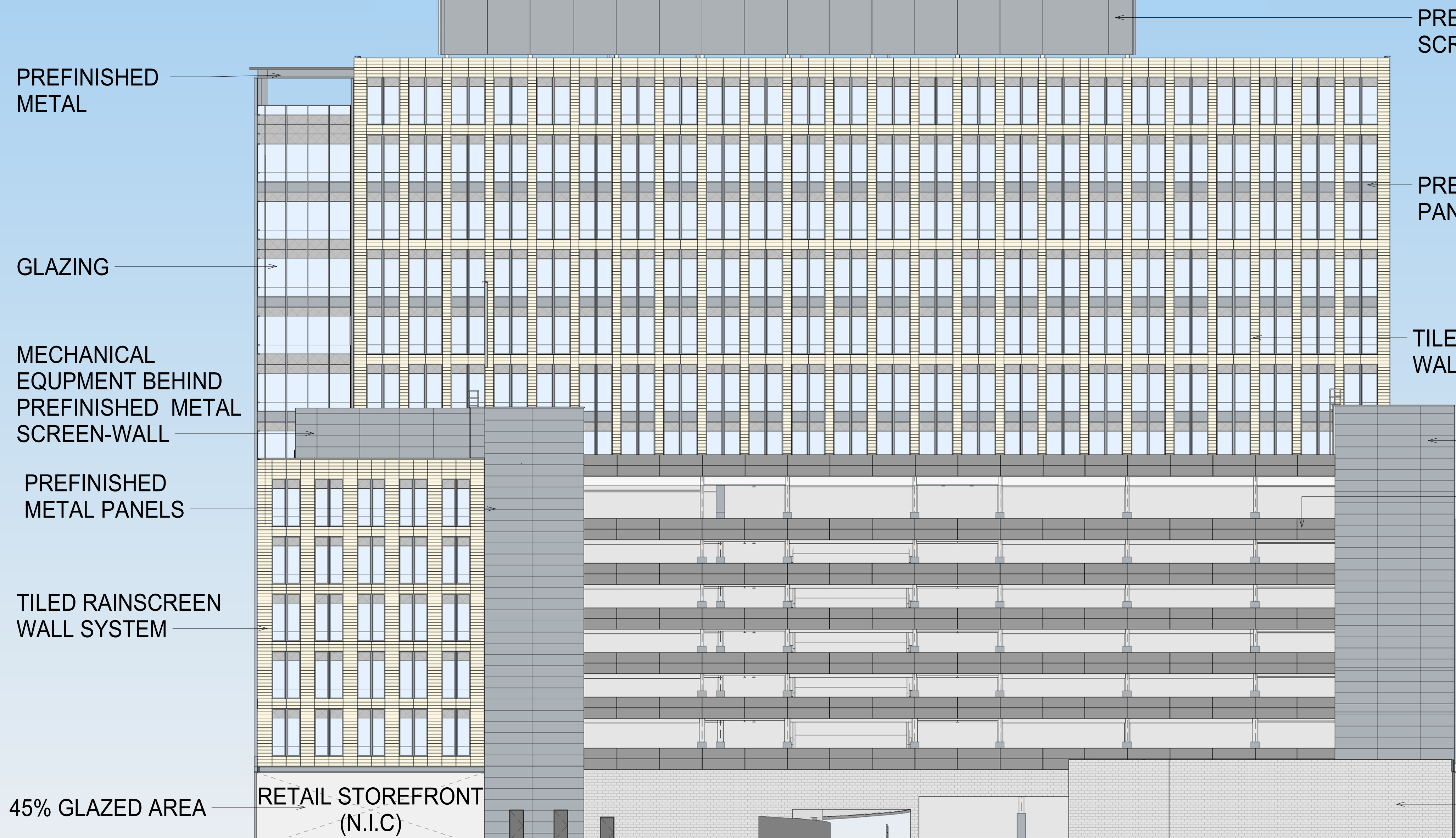
ASSEMBLY ROW - BLOCK 5B

NORTH ELEVATION



- T.O. PARAPET
213' - 4"
- ROOF
195' - 4"
- 13th FLOOR
181' - 10"
- 12th FLOOR
168' - 4"
- 11th FLOOR
154' - 10"
- 10th FLOOR
141' - 4"
- 9th FLOOR
127' - 10"
- 8th FLOOR
114' - 4"
- 7th FLOOR
100' - 10"
- 6th FLOOR
87' - 4"
- 5th FLOOR
73' - 10"
- 4th FLOOR
60' - 4"
- 3rd FLOOR
46' - 10"
- 2nd FLOOR
33' - 4"
- GROUND FLOOR
12' - 0"

201' - 4"
T.O. MECHANICAL PENTHOUSE



EAST ELEVATION

- T.O. PARAPET
213' - 4"
- ROOF
195' - 4"
- 13th FLOOR
181' - 10"
- 12th FLOOR
168' - 4"
- 11th FLOOR
154' - 10"
- 10th FLOOR
141' - 4"
- 9th FLOOR
127' - 10"
- 8th FLOOR
114' - 4"
- 7th FLOOR
100' - 10"
- 6th FLOOR
87' - 4"
- 5th FLOOR
73' - 10"
- 4th FLOOR
60' - 4"
- 3rd FLOOR
46' - 10"
- 2nd FLOOR
33' - 4"
- GROUND FLOOR
12' - 0"

T.O. MECHANICAL PENTHOUSE
201' - 4"

PREFINISHED METAL SCREEN-WALL

PREFINISHED METAL
PANELS

GLAZING

PREFINISHED METAL PANELS

TILED RAINSCREEN
WALL SYSTEM

MECHANICAL EQUIPMENT BEHIND
PREFINISHED METAL PANELS

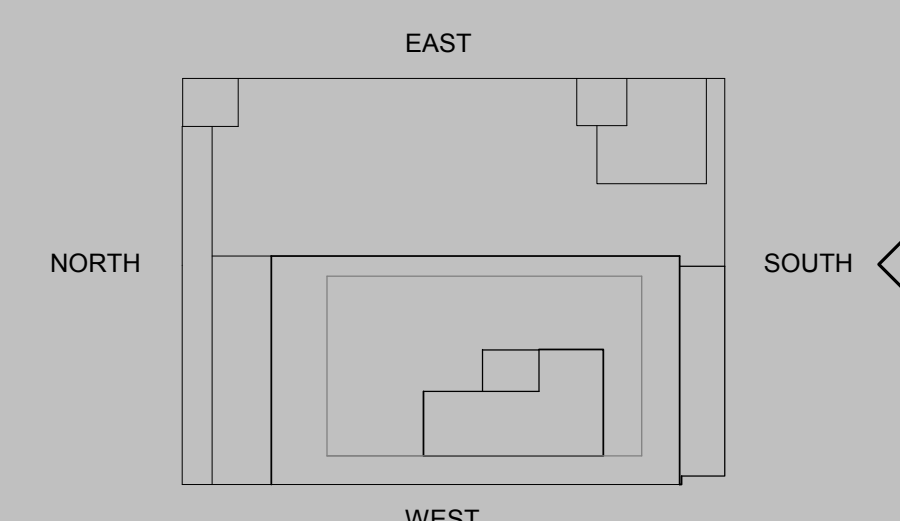
91' - 5"
LOWRISE PORTION T. O. PARAPET
103' - 2 3/4"
T.O. MECHANICAL PENTHOUSE

RETAIL STOREFRONT (N.I.C)

RETAIL STOREFRONT
(N.I.C)

PREFINISHED METAL
PANELS NEXT TO THE
GARAGE ENTRANCE

GARAGE ENTRANCE



SOUTH ELEVATION

