

Harris Park

60 Cross Street, East Somerville

April 3, 2019



presented by:

City of Somerville

Mayor Joseph A. Curtatone

Ward 1 Councilor Matt McLaughlin

Cortney Kirk, Streetscape and Public Space Planner OSPCD

Vanessa Boukili, Urban Forester OSPCD

Park Timeline

2003-2005 Discussion about renovating Harris Park

2006-2007 Plans are developed to swap
Harris Park for 15- 25 Cross St; property is acquired

2009 SPCD applies for EOEEA PARC grant to acquire 15-25 Cross St.

2011 After testing no reportable conditions of hazardous materials were found,
City purchases 15-25 Cross St with combination of PARC Grant and City funds

City awarded PARC grant to construct Chuckie Harris Park at 15-25 Cross St

2013 Chuckie Harris Park opens!

2013 City and Criterion Development Partnership begin partnership
to renovate Harris Park

CDP engages the community

2016 Project is sold to Young Construction

2018 City and Young Construction develop park plans for construction

Neighboring Parks & Connections



Neighboring Park Amenities

Chuckie Harris Park



Foss Park



Edward Leathers

Community Park



Otis Playground



Zero New Washington



Florence Playground



Mystic River Reservation



Draw 7 Park



Future

East Somerville

Community School Park



Perkins Playground



Symphony Park

Green Space



Glen Park/

McCarthy Field



Scale Comparisons

approximate square footage in thousands



Existing Conditions



ROSS STREET EAST
(PUBLIC - 40' WIDE)

PENNSYLVANIA AVE.
(PUBLIC - 40' WIDE)

BENCHMARK
UP#558-16
SPIKE SET
ELE.=18.75'

UP#558-6 BELL
VOC
CONC. WALK
DRIVEWAY
TNR JUNGLE
CONC. PAD
w/POST
JUNGLE GYM AREA
SWING SET
BIT.
CONC. WALK
CONC. WALL
UP#558-8 WCR
UP#557-7/7
VOC
CHAIN LINK FENCE
UP#558-14
w/2 RISERS
BT.
BASKETBALL HOOP
R=2521.00'
L=47.87'
=1'05'17"

N/F
TSAMLA TSAMLA AND
JANG C. SHERPA
MAP 89-B-9
BOOK 41935, PAGE 247

ZONE RA

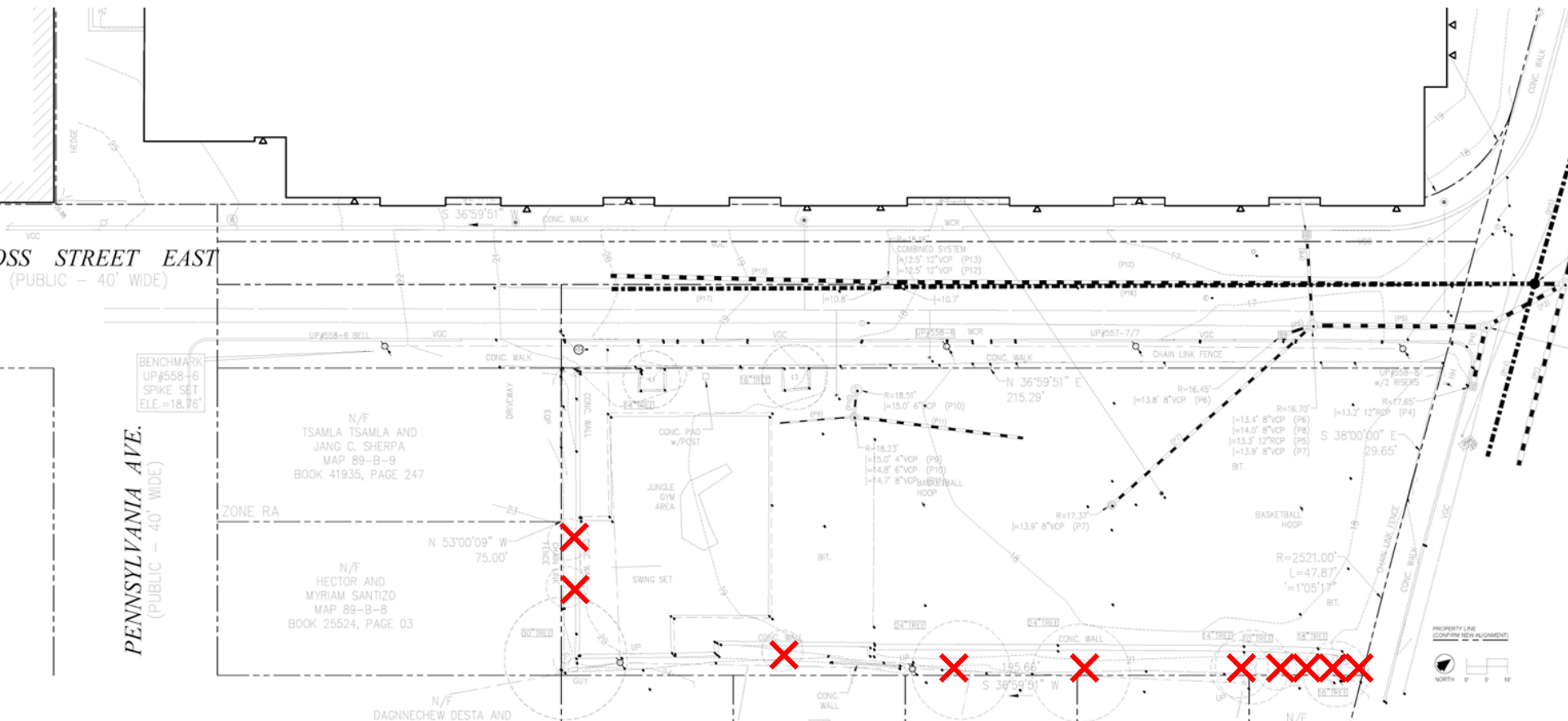
N/F
HECTOR AND
MYRIAM SANTIZO
MAP 89-B-8
BOOK 25524, PAGE 03

N/F
DAGNNECHEW DESTA AND

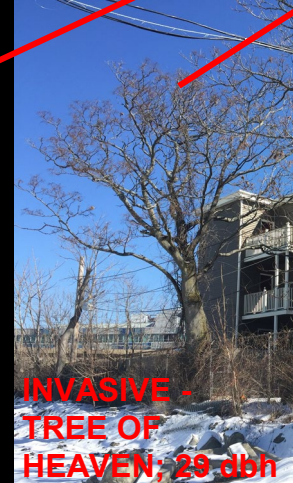
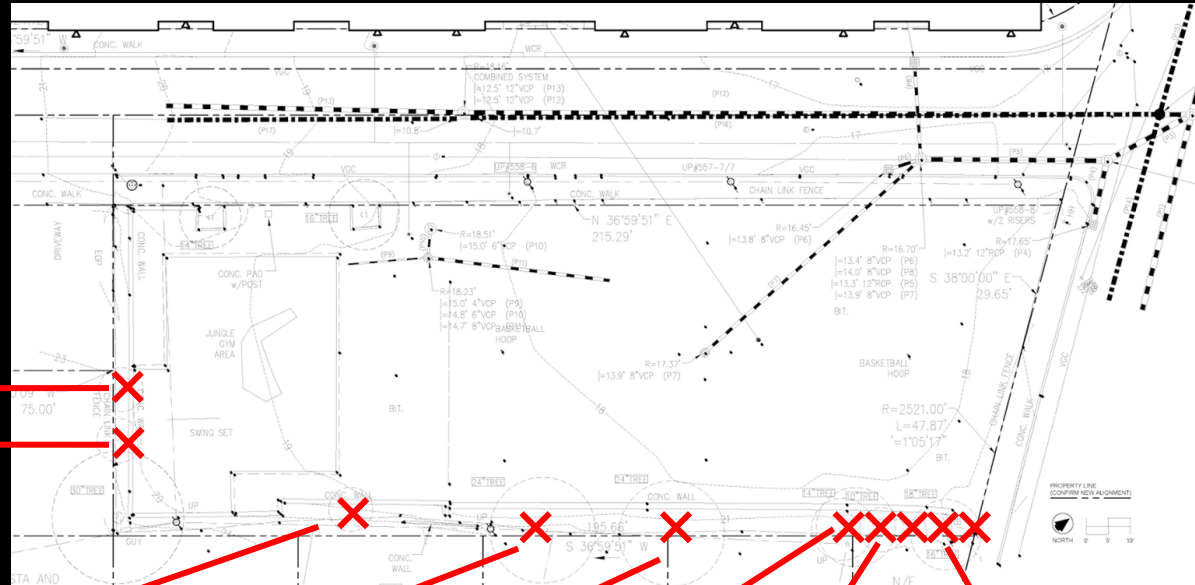
PROPERTY LINE (CONFIRM NEW ALIGNMENT)

NORTH

Trees Proposed to be Removed



Trees Proposed to be Removed



Net Trees

Existing – 192 DBH inches

3 Stumps, 35 DBH inches

10 Deciduous Trees, 157 DBH inches

Proposed Removals – 133 DBH inches

3 Stumps, 35 DBH inches

7 Deciduous Trees, 98 DBH inches

New – over 209 (DBH + caliper + height) inches

3 Existing trees to remain, 59 DBH

100 Deciduous Trees, 150 caliper inches at install

55 Coniferous Trees, 5' to 10" height at install

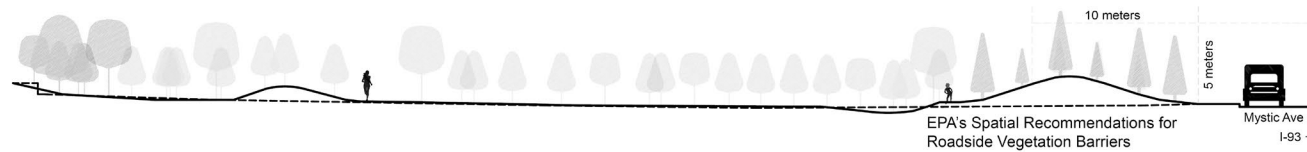
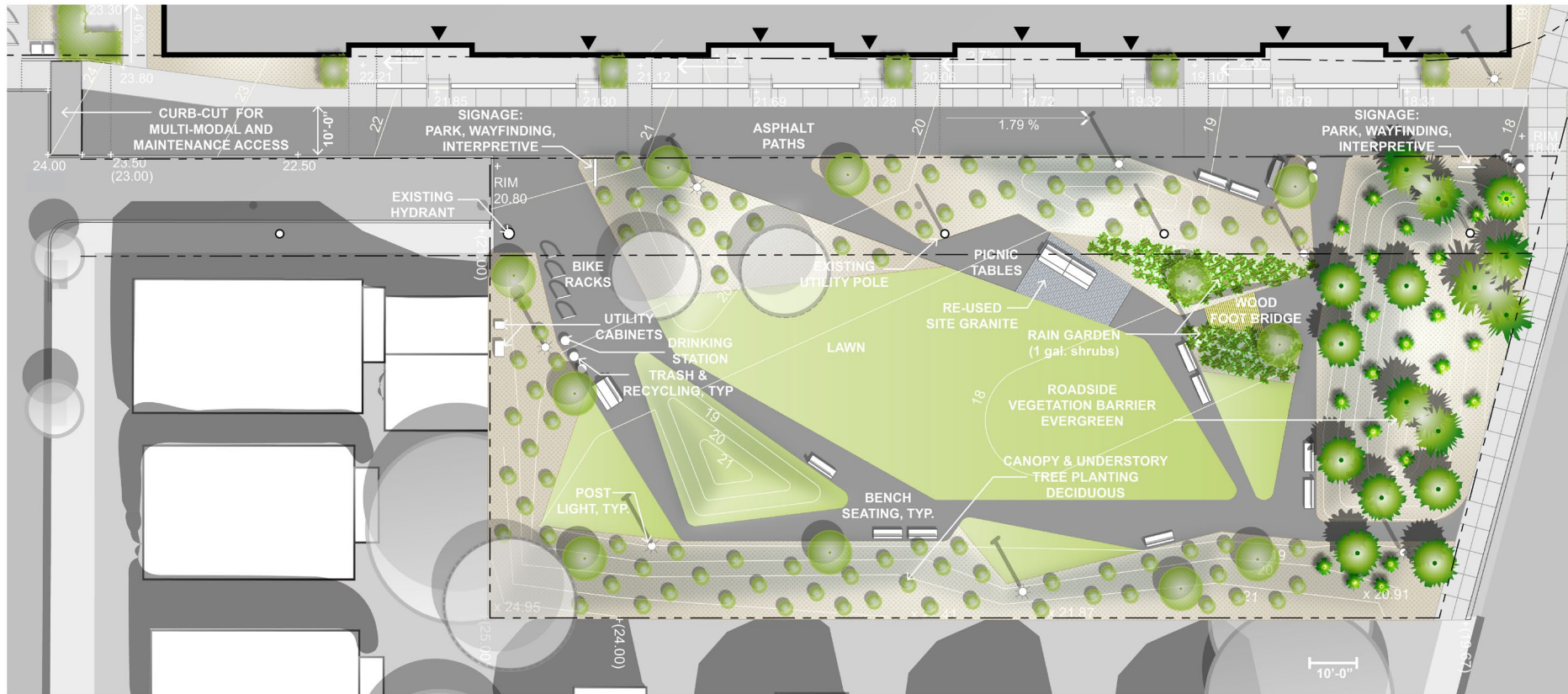
Park Features

- Passive Greenspace
- 100+ Trees
- Air Particulate Mitigation
roadside vegetation barrier - landform with evergreen trees following the EPA's recommendations
- Stormwater Mitigation
surface drainage to rain garden and increased permeable surface area
- Multi-modal Pedestrian Connection
Cross St E to Mystic Ave - East Somerville to Assembly Square
- Standard Park Amenities
variety of seating areas, lighting, drinking fountain, bike racks, signage

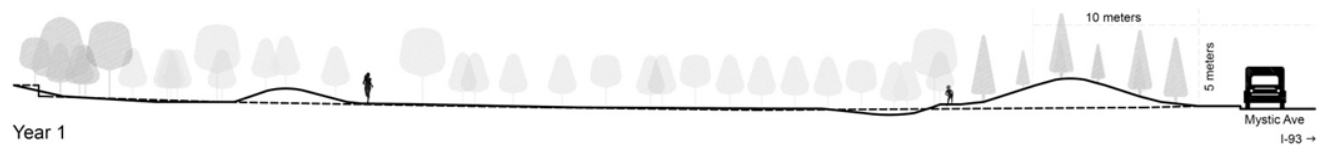
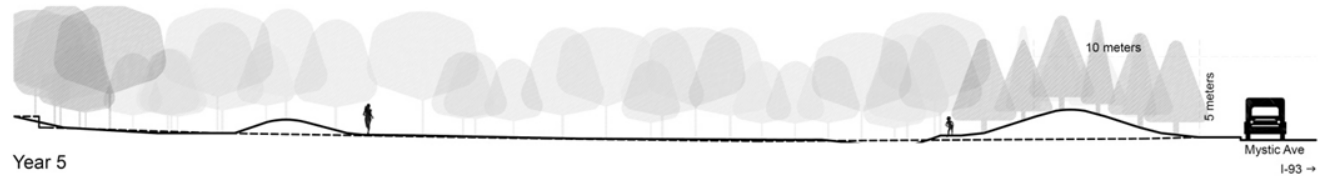
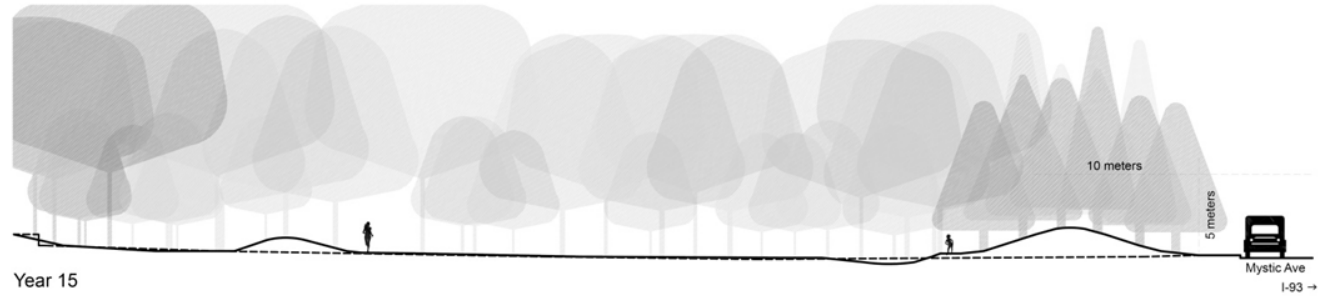
Park Plan



Park Plan



Air Particulate Mitigation



Tree Selection



Juniperus virginiana



Picea pungens



Pinus strobus



Thuja occidentalis

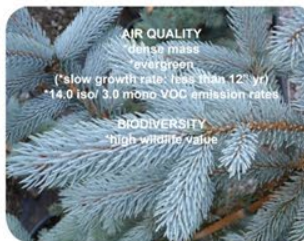


Cornus alba



AIR QUALITY
*very dense mass
*evergreen
*slow growth rate: less than 12" yr
*0.1 iso/ 0.3 mono VOC emission rates

BIODIVERSITY
*high wildlife value



AIR QUALITY
*dense mass
*evergreen
*slow growth rate: less than 12" yr
*14.0 iso/ 3.0 mono VOC emission rates

BIODIVERSITY
*high wildlife value



AIR QUALITY
*moderate mass
*deciduous
*medium growth rate: 18"-24" yr
*0.1 iso/ 3.0 mono VOC emission rates

BIODIVERSITY
*high wildlife value



AIR QUALITY
*very dense mass
*deciduous
*fast growth rate: more than 24" yr
*0.1 iso/ 0.5 mono VOC emission rates

INTEREST
*aromatic foliage



BIORETENTION
*tolerant shrub - 8'-10'
*fast growth rate

INTEREST
*winter color

Selection Criteria

-Air Quality: Plants with characteristics that can help improve air quality near roadways by both interception of ultrafine particulates and uptake of gaseous pollutants. Complex leaf surface and dense mass that provides more surface area to capture particulates, evergreen so not susceptible to seasonal change, low or no air emissions, and pollution/stress resistant.

-Shade: canopy trees that can grow to provide shade.

-Biodiversity: plants that contribute to the larger regional ecology.

-Bioretention: plants that can absorb water in storm events and tolerate periods of drought.

-Interest: ornamental characteristics.

-Low Maintenance

-Sight Lines



Acer saccharinum



Metasequoia glyptostroboides



Fagus grandifolia



Ostrya virginiana



Celtis occidentalis



SHADE
*canopy tree: 75'-100'
*fast growth rate: 24"-36" yr

AIR QUALITY
*open mass
*hairy leaves, late Oct drop & mid April emergence
*0.1 iso/ 1.6 mono VOC emission rates

BIODIVERSITY
*high wildlife value



SHADE
*canopy tree: 75'-100'
*fast growth rate: more than 24" yr

AIR QUALITY
*moderate mass
*complex leaf structure, fall drop & spring emergence
*0.1 iso/ 3.0 mono VOC emission rates

BIODIVERSITY
*high wildlife value



SHADE
*canopy tree: 75'-100'
*slow growth rate: less than 12" yr

AIR QUALITY
*very dense mass
*persistent leaves & mid April emergence
*0.1 iso/ 0.6 mono VOC emission rates

BIODIVERSITY
*high wildlife value



SHADE
*large understory: 35'-50' ht
*slow growth rate: 8"-10" yr

AIR QUALITY
*very dense mass
*persistent, fuzzy leaves & early May emergence
*0.1 iso/ 0.5 mono VOC emission rates

BIODIVERSITY
*high wildlife value



SHADE
*canopy tree: 75'-100'
*fast growth rate: 24"-30" yr

AIR QUALITY
*moderate mass
*persistent, rough leaves & late April emergence
*0.1 iso/ 0.2 mono VOC emission rates

BIODIVERSITY
*high wildlife value

Park Signage



PARK NAME



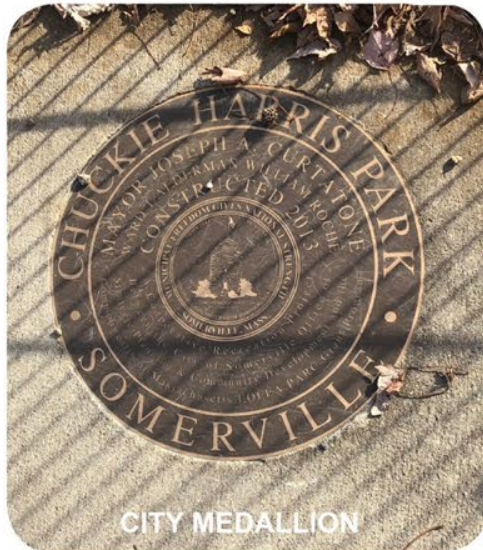
REGULATIONS



WAYFINDING

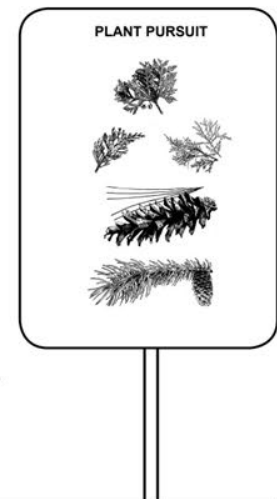


INTERPRETIVE



CITY MEDALLION

OPPORTUNITIES FOR CHILDREN:
Interpretive signage with
activities like seek-and-find.



Park Furnishings



BACKED BENCH



PICNIC TABLE



BIKE RACK



TRASH & RECYCLING



POST LIGHT



ELECTRIC CABINET



DRINKING FOUNTAIN



BOTTLE FILLER



WATER CABINET

Discussion

- Dogs?
- Park Name

Park Schedule

- End of April – Demolition Begins
- Summer 2019 – Park Construction Commences
- Fall 2019 – Plantings Installed & Park Opens!

Comments & Questions

Cortney Kirk

Streetscape and Public Space Planner

Mayor's Office of Strategic Planning & Community Development

Somerville City Hall

93 Highland Avenue

Somerville, MA 02143

(617) 625-6600

ckirk@somervillema.gov